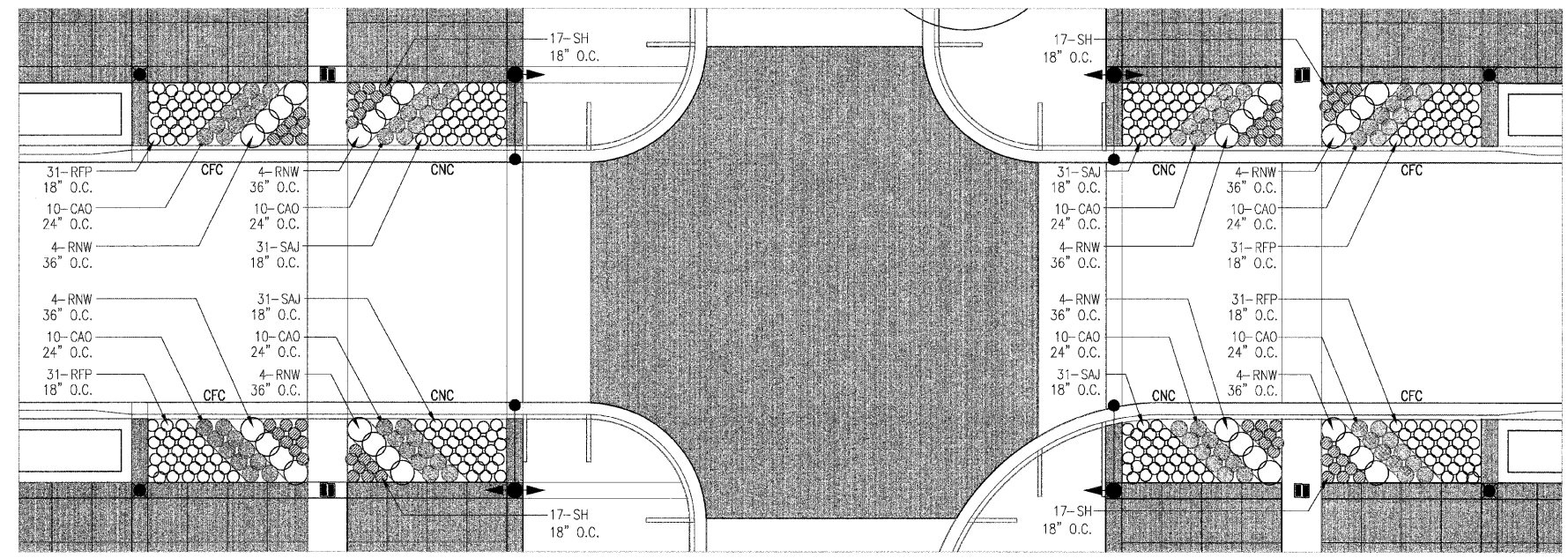


F.A.U. RTE.	SECTION	COUNTY	TOTAL SHEETS	SHEET NO.
7982	*	SANGAMON	68	45
STA.		TO STA.		
FED. ROAD DIST. NO.		ILLINOIS FED. AID PROJECT		
* 09-00447-03-PV		CITY OF SPRINGFIELD		



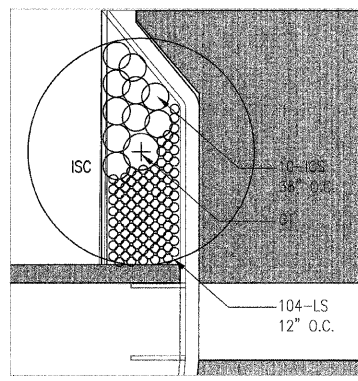
L 1-1 CAPITOL AVENUE NEAR CORNER (CNC) PLANTING AREA
 L 1-1 CAPITOL AVENUE FAR CORNER (CFC) PLANTING AREA

CNC-TYPICAL NEAR CORNER PLANT LIST

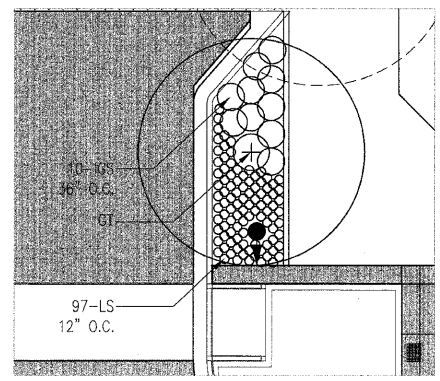
DESIGNATION	BOTANICAL NAME	COMMON NAME	SIZE
SHRUBS			
RNW	ROSA 'NEARLY WILD'	NEARLY WILD ROSE	5-GAL. 24" HEIGHT
PERENNIALS AND GROUNDCOVERS			
CAO	CALAMAGROSTIS ACUTIFLORA 'OVERDAM'	FEATHER REED GRASS	1-GAL. WELL DEVELOPED
SAJ	SEDUM 'AUTUMN JOY'	AUTUMN JOY SEDUM	1-GAL. WELL DEVELOPED
SH	SPOROBOLUS HETEROLEPIS	PRAIRIE DROPSEED	1-GAL. WELL DEVELOPED

CFC-TYPICAL FAR CORNER PLANT LIST

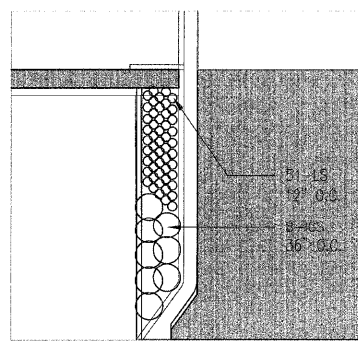
DESIGNATION	BOTANICAL NAME	COMMON NAME	SIZE
SHRUBS			
RNW	ROSA 'NEARLY WILD'	NEARLY WILD ROSE	5-GAL. 24" HEIGHT
PERENNIALS AND GROUNDCOVERS			
CAO	CALAMAGROSTIS ACUTIFLORA 'OVERDAM'	FEATHER REED GRASS	1-GAL. WELL DEVELOPED
RFG	RUDBECKIA FULGIDA 'POT OF GOLD'	POT OF GOLD BLACK-EYED SUSAN	1-GAL. WELL DEVELOPED
SH	SPOROBOLUS HETEROLEPIS	PRAIRIE DROPSEED	1-GAL. WELL DEVELOPED



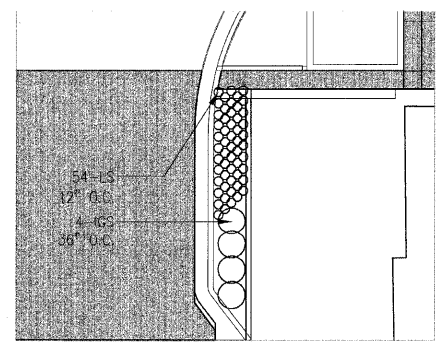
L 1-2 INTERSECTING STREET CORNER (ISC) PLANTING AREA



L 1-3 INTERSECTING STREET CORNER (ISC) PLANTING AREA 2



L 1-4 INTERSECTING STREET CORNER (ISC) PLANTING AREA 3



L 1-5 INTERSECTING STREET CORNER (ISC) PLANTING AREA 4

ISC-TYPICAL INTERSECTING STREET CORNER PLANT LIST

DESIGNATION	BOTANICAL NAME	COMMON NAME	SIZE
TREES			
GT	GLESITSIA TRIACANTHOS INERMIS 'SKYLINE'	SKYLINE THORNLESS HONEYLOCUST	3", B.B.
SHRUBS			
IGS	ILEX GLABRA 'SHAMROCK'	SHAMROCK INKBERRY HOLLY	5-CAL. WELL DEVELOPED
PERENNIALS AND GROUNDCOVERS			
LS	LIRIOPE SPICATA	CREeping LILYTURF	1 QUART WELL DEVELOPED

REVISIONS	
NAME	DATE
#1	10/28/09

ILLINOIS DEPARTMENT OF TRANSPORTATION
 TYPICAL CORNER PLANTING
 FAU RTE 7982 CAPITOL AVE
 SEC NO. 09-00447-03-PV
 SANGAMON COUNTY, ILLINOIS

SCALE: VERT. _____
 DATE _____ HORIZ. _____

DRAWN BY _____
 CHECKED BY _____



Massie & Massie Associates
 1210 S. 5th Street, Springfield, IL 62703 217-544-3210
 421 West Main Street, Decatur, IL 62522 217-424-0792

PLOT DATE = 9/24/09
 FILE NAME = MMA Capitol Avenue Planting Plan
 PLOT SCALE = 1:10
 USER NAME =