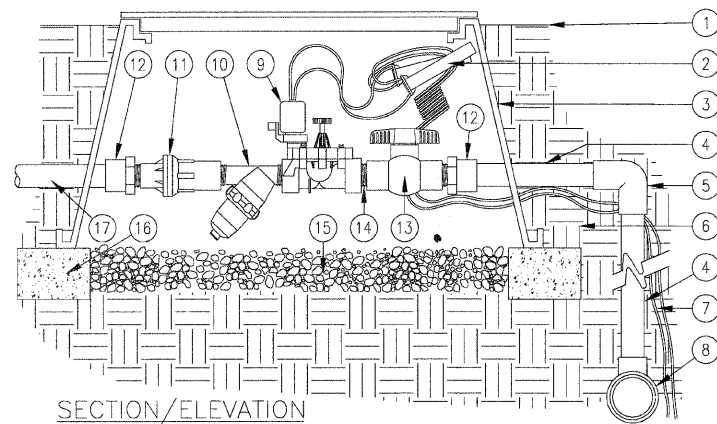
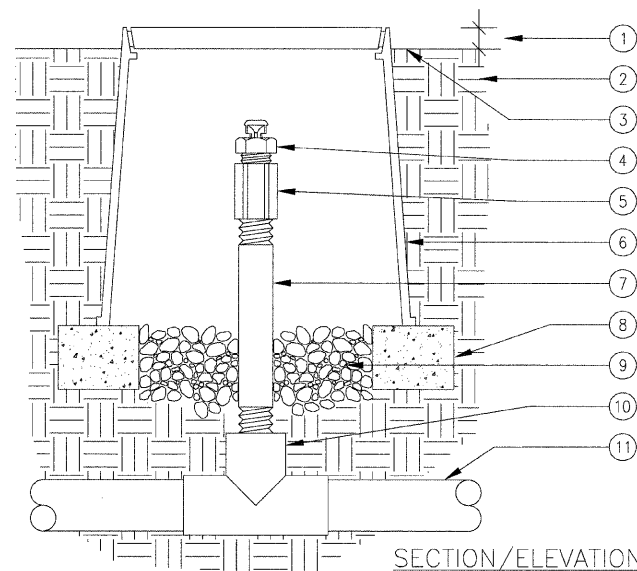


| | | | | |
|---------------------|---------|---------------------------|--------------|-----------|
| F.A.U. RTE. | SECTION | COUNTY | TOTAL SHEETS | SHEET NO. |
| 7982 | | SANGAMON | 68 | 58 |
| STA. | | TO STA. | | |
| FED. ROAD DIST. NO. | | ILLINOIS FED. AID PROJECT | | |
| 09-00447-03-PV | | CITY OF SPRINGFIELD | | |



1. FINISH GRADE.
2. CONTROL WIRES WITH 3/6" SERVICE COIL AND WATER PROOF WIRE CONNECTIONS, DBY OR EQUAL.
3. RECTANGULAR PLASTIC VALVE BOX. HEAT BRAND STATION NUMBER ON LID IN 2" HIGH CHARACTERS.
4. PVC MAINLINE PER SPECIFICATIONS (LENGTH AS REQUIRED).
5. SCH 40 PVC ELL (SxS).
6. NATIVE SOIL PER SPECIFICATIONS.
7. CONTROL WIRES TO CONTROLLER.
8. PVC MAINLINE FITTING.
9. D.C. SOLENOID VALVE MATCH TO LINE SIZE.
10. 150 MESH Y-FILTER.
11. 25 PSI MEDIUM FLOW PRESSURE REGULATOR.
12. SCH 40 PVC MALE ADAPTER.
13. SCH 40 PVC BALL VALVE.
14. SCH 80 PVC CLOSE NIPPLE.
15. PEA GRAVEL SUMP, MINIMUM 6" DEEP.
16. BRICK SUPPORTS (4 COMMON BRICKS REQUIRED).
17. LATERAL LINE TO DRIP SYSTEM.

IRRIGATION STATION CONTROLLER SECTION



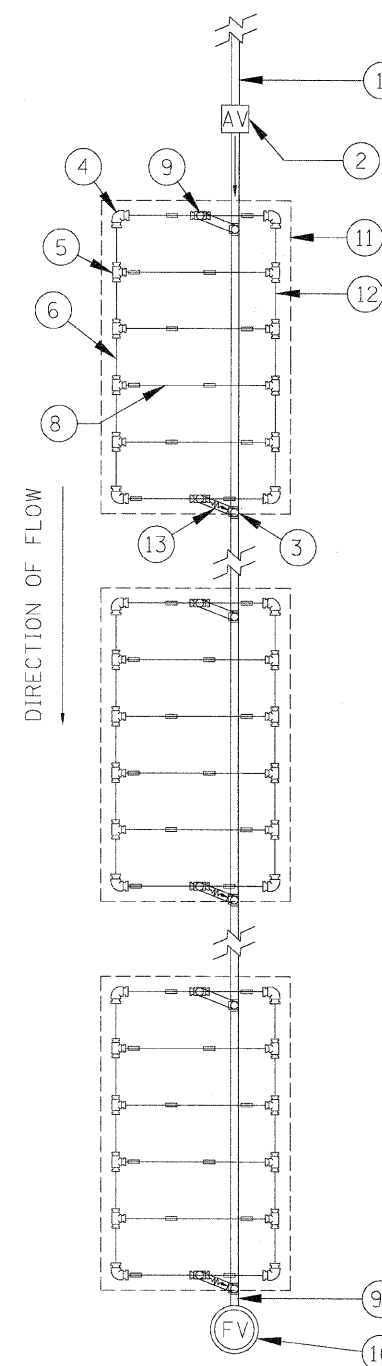
1. 1" ABOVE FINISH GRADE.
2. NATIVE SOIL PER SPECIFICATIONS.
3. FINISH GRADE.
4. AIR/VACUUM RELIEF VALVE
5. 1/2" PVC COUPLING (TxT).
6. 6" ROUND PLASTIC VALVE BOX. HEAT BRAND "AR" ON LID IN 1" HIGH CHARACTERS.
7. 1/2" SCH 80 PVC NIPPLE (LENGTH AS REQUIRED).
8. BRICK SUPPORTS (2 COMMON BRICKS REQUIRED).
9. PEA GRAVEL SUMP (6" DEEP).
10. PVC TEE (SxSxT) WITH 1/2" THREADED OUTLET.
11. PVC PIPING.

USE ONE AIR/RELIEF VALVE FOR EVERY 7 GPM PER ZONE. LOCATE AT HIGH POINTS.

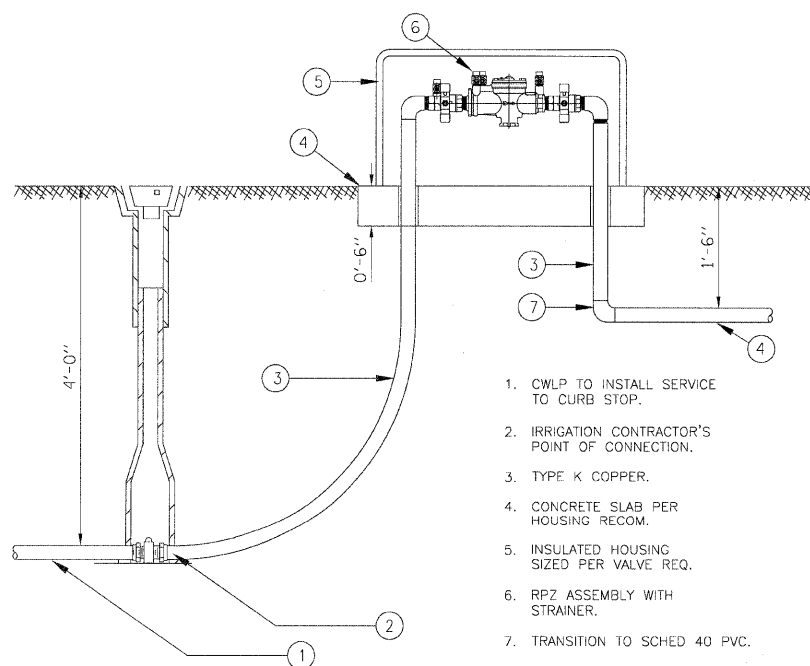
AIR/VACUUM RELIEF VALVE DETAIL

1. PVC MANIFOLD LINE FROM VALVE BOX.
2. AIR/VACUUM RELIEF VALVE PLUMBED TO SUPPLY LATERAL AT HIGH POINT.
3. PVC TEE (SxSxS).
4. LOC-EZE ELL.
5. LOC-EZE TEE.
6. POLY TUBING AT SUPPLY AND FLUSH END OF EACH ISLAND.
7. LOC-EZE TEE 1" X 5/8"
8. 5/8" DRIPLINE LATERAL W/ 18" EMMITTER SPACING
9. PVC ISLAND FLUSH MANIFOLD.
10. AUTOMATIC FLUSH VALVE PLUMBED TO FLUSH MANIFOLD.
11. ISLAND PERIMETER.
12. PERIMETER LATERALS 2" TO 4" FROM EDGE.
13. PVC SWING CHECK VALVE.

IRRIGATION CONTRACTOR TO SUBMIT FINAL IRRIGATION DESIGN WITH CALCULATION PACKAGE WITH SHOP DRAWINGS PRIOR TO CONSTRUCTION.

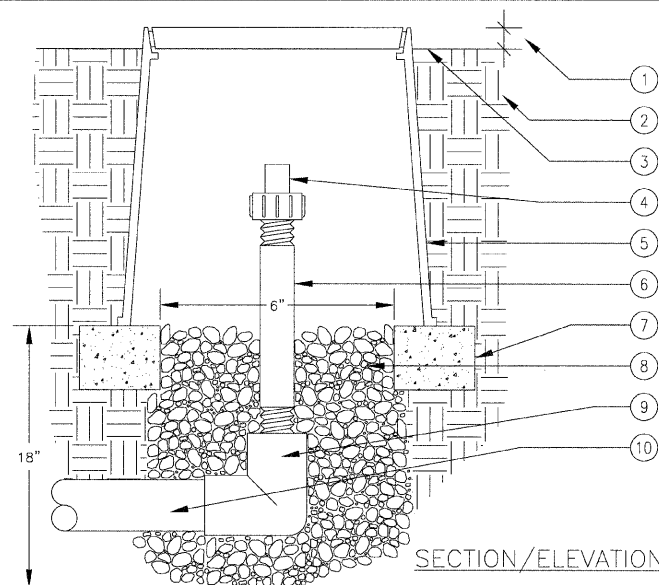


TYPICAL 0.5 GPH IRRIGATION BED LAYOUT



1. CWLP TO INSTALL SERVICE TO CURB STOP.
2. IRRIGATION CONTRACTOR'S POINT OF CONNECTION.
3. TYPE K COPPER.
4. CONCRETE SLAB PER HOUSING RECOM.
5. INSULATED HOUSING SIZED PER VALVE REQ.
6. RPZ ASSEMBLY WITH STRAINER.
7. TRANSITION TO SCHED 40 PVC.
8. TO IRRIGATION HEADER AND VALVE CONTROL BOX.

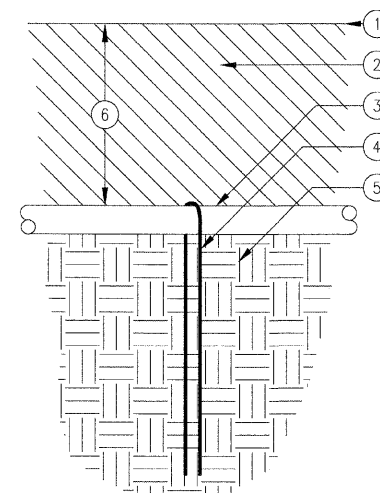
IRRIGATION SERVICE CONNECTION AND RPZ ASSEMBLY



1. 1" ABOVE FINISH GRADE.
2. NATIVE SOIL PER SPECIFICATIONS.
3. FINISH GRADE.
4. FLUSH VALVE
5. 6" ROUND PLASTIC VALVE BOX. HEAT BRAND "FV" ON LID IN 1" HIGH CHARACTERS.
6. 3/4" SCH 80 PVC NIPPLE (LENGTH AS REQUIRED).
7. BRICK SUPPORTS (2 COMMON BRICKS REQUIRED).
8. PEA GRAVEL SUMP (6" x 18").
9. PVC ELL (SxT) WITH 3/4" THREADED OUTLET.
10. PVC PIPING.

LOCATE IN LOW POINTS OF THE SYSTEM AND AT ZONE ENDS.

IRRIGATION FLUSH VALVE DETAIL



1. FINISH GRADE.
2. BACKFILL MIX PER SPECIFICATIONS.
3. DRIPLINE 5/8" DIAMETER W/ 18" EMMITTER SPACING.
4. STEEL SOIL STAPLE.
5. NATIVE SOIL PER SPECIFICATIONS.
6. DEPTH OF TUBING (4")

NOTE: LOCATE STAPLES ALONG TUBING AT 4'-6" ON CENTER AND AT ALL FITTINGS (TEES, ELLS, ETC.)

DRIPLINE STAPLE RESTRAINT DETAIL

| REVISIONS | |
|-----------|------|
| NAME | DATE |
| | |
| | |
| | |
| | |
| | |
| | |
| | |
| | |
| | |

ILLINOIS DEPARTMENT OF TRANSPORTATION
IRRIGATION DETAILS
FAU RTE 7982 CAPITOL AVE
SEC NO. 09-00447-03-PV
SANGAMON COUNTY, ILLINOIS

SCALE: VERT. HORIZ. DATE 10/9/09 DRAWN BY LJB CHECKED BY



LAYOUT DAP 10/23/07
DRAWN DAP 10/23/07
REVIEWED MH 10/19/07
PLOT DATE = 11/21/2009
FILE NAME = I:\NCS\02522841\CADD\Road\MicroStation\Sheet\Section_2_5in_7in_AC-813_IRR_DET.dgn
PLOT SCALE = 1/8" = 1'-0"
USER NAME = Hagan08951