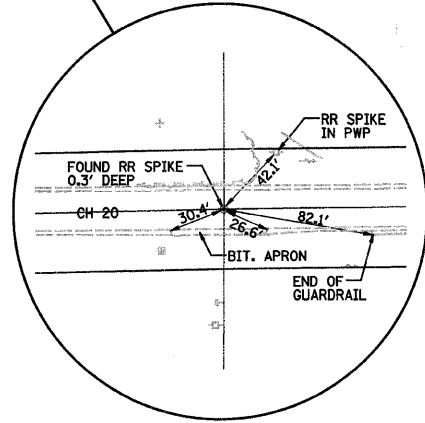
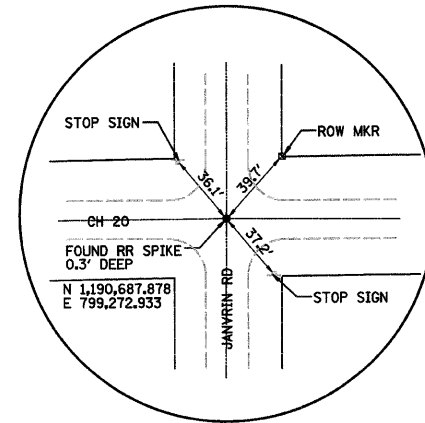
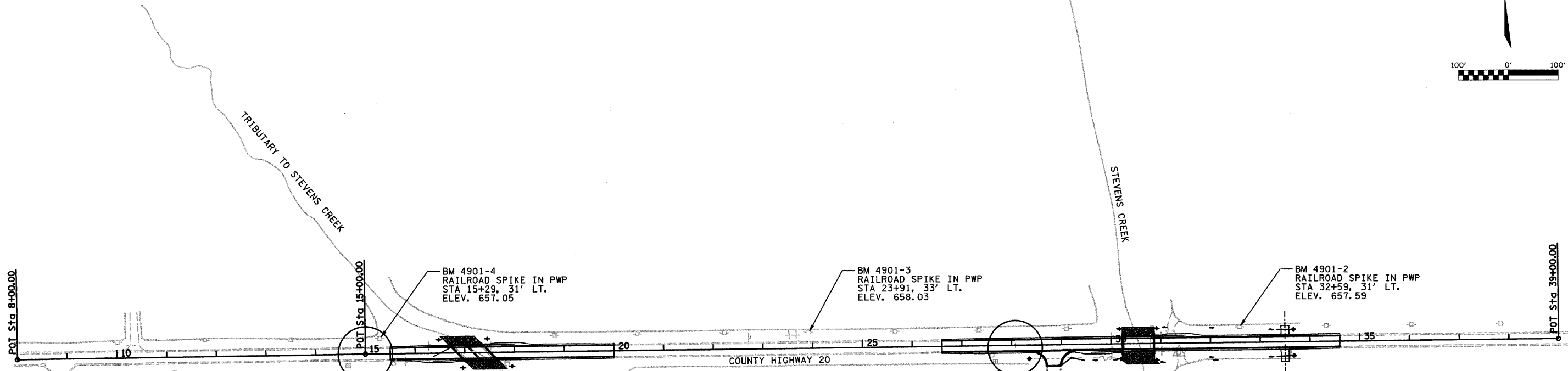
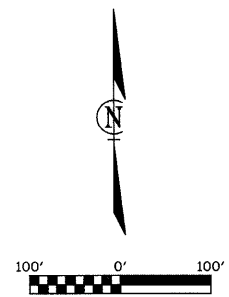


ROUTE NO.	SECTION	COUNTY	TOTAL SHEETS	SHEET NO.
FAS 549	*	MACON	52	5
FED. ROAD DIST. NO.	ILLINOIS	PROJECT		

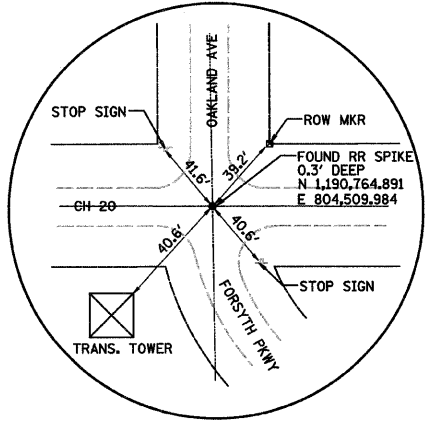
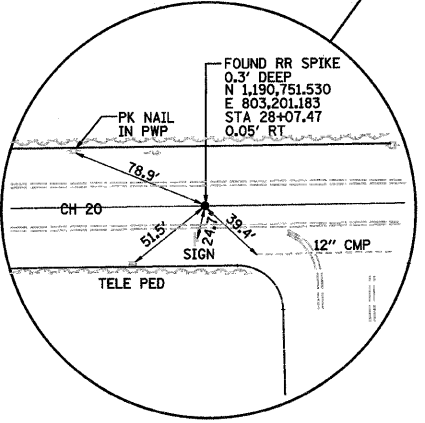
\* 03-00184-00-BR

CH 20 CONSTRUCTION BASELINE DATA

Point D1000 N 1,190,730.328 E 801,193.821 Sta 8+00.00  
 Course from D1000 to D1001 N 89° 20' 58" E Dist 700.000  
 Point D1001 N 1,190,738.276 E 801,893.776 Sta 15+00.00  
 Course from D1001 to D1002 N 89° 25' 02" E Dist 2,400.000  
 Point D1002 N 1,190,762.690 E 804,293.652 Sta 39+00.00



STA 15+00.00  
POINT D1001



ALIGNMENT, TIES, AND BENCHMARKS

REVISIONS			SECTION 03-00184-00-BR		CH 20 OVER STEVENS CR		DRAWN BY DATE	
1			MACON COUNTY				DLB 7/09	
2							CHECKED BY DATE	
3							CAS 7/09	
4							BOOK NUMBER	
5							259	
6							PROJECT No.	
7							4901	
8							SHEET No.	
9								
10								

**HOMER L. CHASTAIN & ASSOCIATES, LLP**  
 CONSULTING ENGINEERS  
 184-001297

DECATUR CHICAGO  
 (817) 422-8544 (773) 714-0050  
 ROCKFORD  
 (815) 489-0050