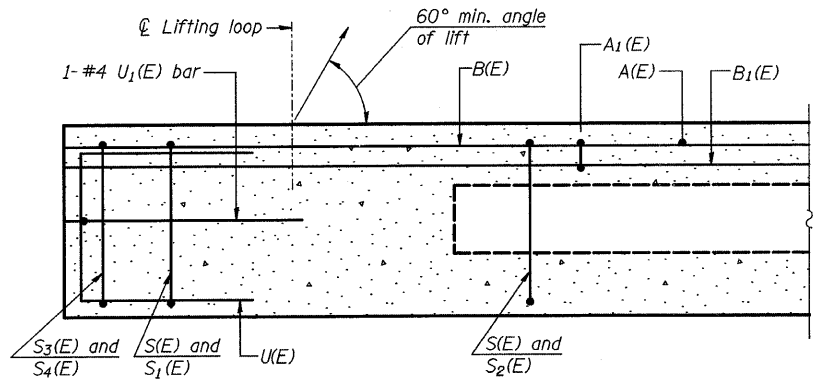


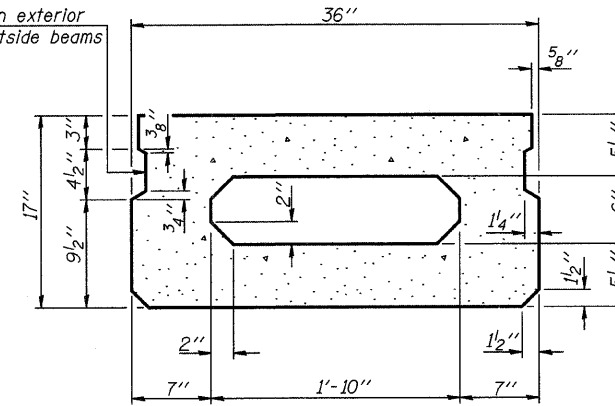
ROUTE NO.	SECTION	COUNTY	TOTAL SHEETS	SHEET NO.
FAS 549	*	MACON	52	13
FED. ROAD DIST. NO. 7		ILLINOIS	PROJECT	

\*03-00184-00-BR

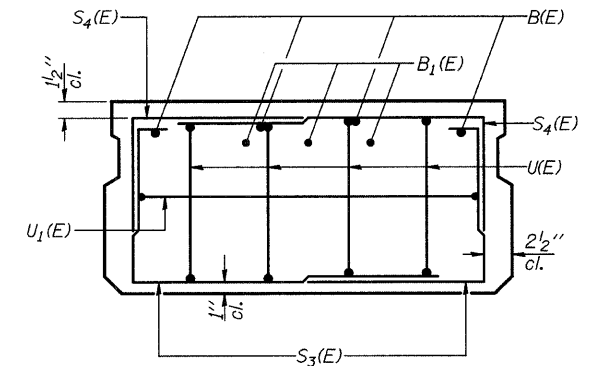


SECTION C-C

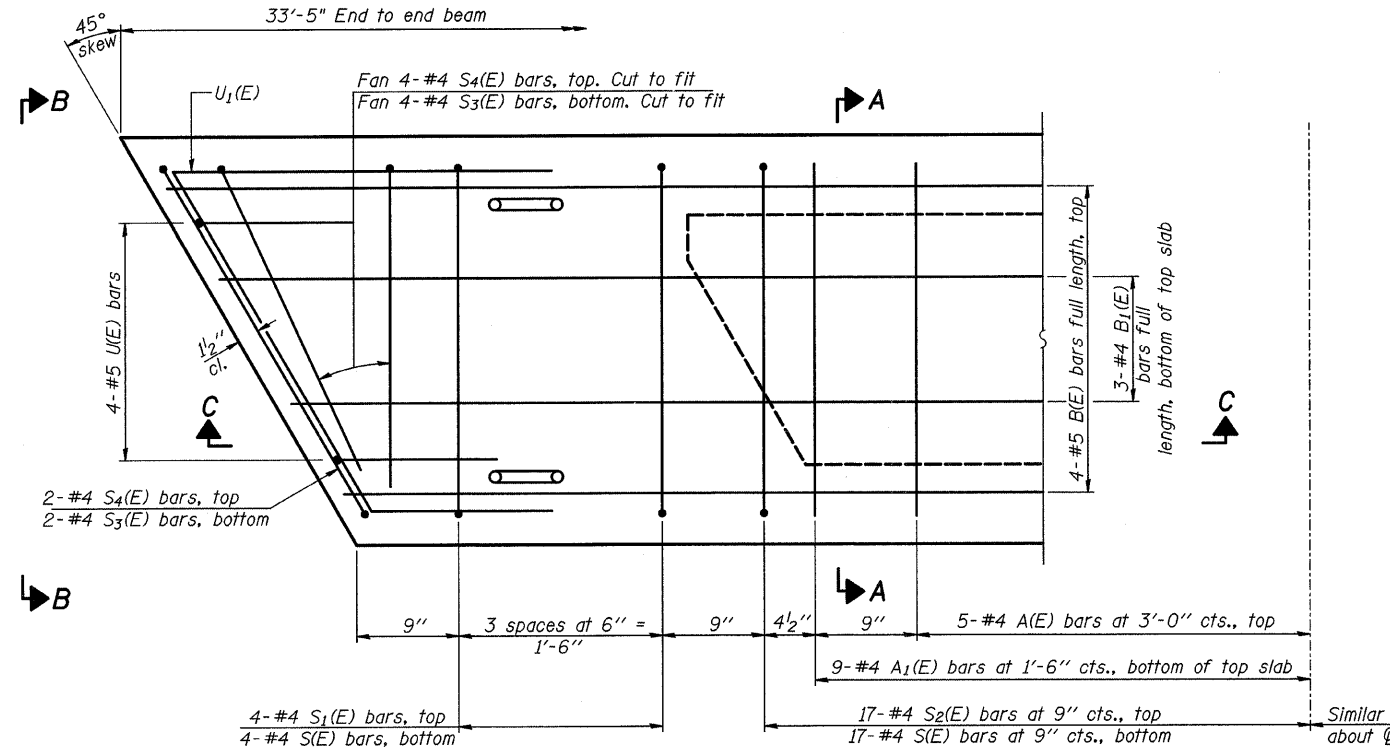
Omit key on exterior face of outside beams



SECTION A-A  
(Showing dimensions)

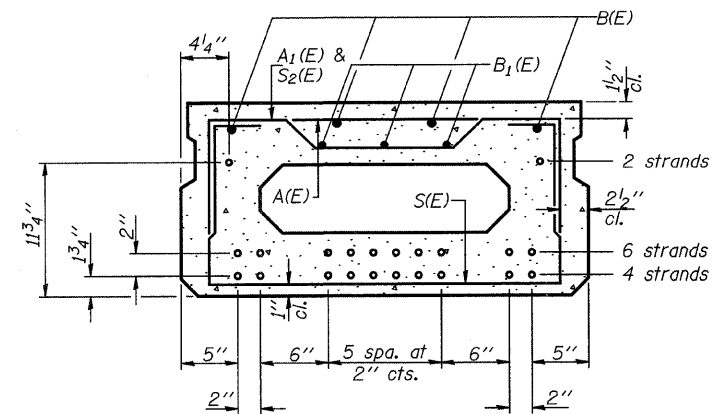


VIEW B-B



PLAN VIEW

Note: Spacing of S(E) and S2(E) bars may be adjusted up to 4" in the immediate area of the transverse tie diaphragms to miss the block outs for the transverse ties.



SECTION A-A

(Showing reinforcement and permissible strand locations)

Note: Place the number of strands specified in each row symmetrically about the centerline of beam in the permissible strand locations shown.

**BAR LIST**  
**ONE BEAM ONLY**  
(For Information only)

Bar	No.	Size	Length	Shape
A(E)	9	#4	2'-7"	—
A1(E)	34	#4	2'-10"	—
B(E)	4	#5	33'-2"	—
B1(E)	3	#4	33'-2"	—
S(E)	41	#4	5'-9"	U
S1(E)	8	#4	4'-3"	U
S2(E)	33	#4	4'-6"	U
S3(E)	12	#4	4'-2"	U
S4(E)	12	#4	3'-5"	U
U(E)	8	#5	3'-8"	U
U1(E)	2	#4	8'-6"	U

Note: See sheet 4 of 10 for additional details and Bill of Material.

CH 20 OVER TRIBUTARY TO STEVENS CREEK  
**17" X 36" PPC DECK BEAM DETAILS**

REVISIONS	CH 20	SECTION 03-00184-00-BR	DRAWN BY DATE
1	DATE INITIALS	SN 058-3370	R KING 6/09
2		MACON COUNTY	CHECKED BY DATE
3			JMB 6/09
4			BOOK NUMBER
5			
6			
7			
8			
9			
10			

HOMER L. CHASTAIN & ASSOCIATES, LLP  
CONSULTING ENGINEERS  
DECATUR CHICAGO  
(317) 422-8544 (773) 714-0050  
ROCKFORD  
(815) 489-0050  
184-00177

PROJECT NO.  
**4901**  
SHEET NO.