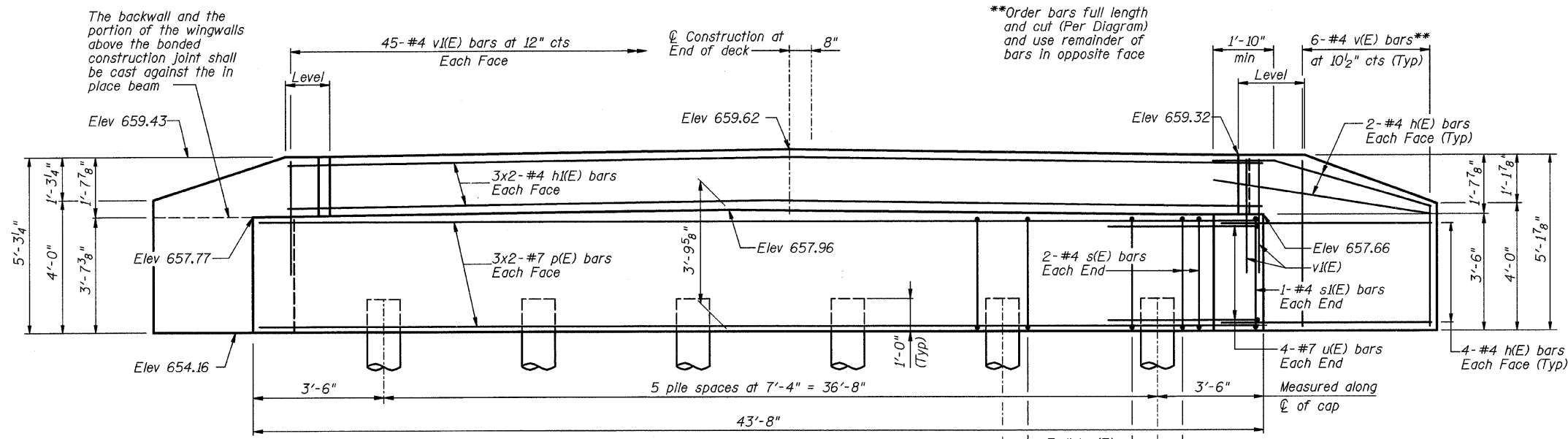


Sheet No. 7  
of 10 Sheets

ROUTE NO.	SECTION	COUNTY	TOTAL SHEETS	SHEET NO.
FAS 549	*	MACON	52	17
FED. ROAD DIST. NO. 7	LLINCS	PROJECT		
		*03-00184-00-BR		



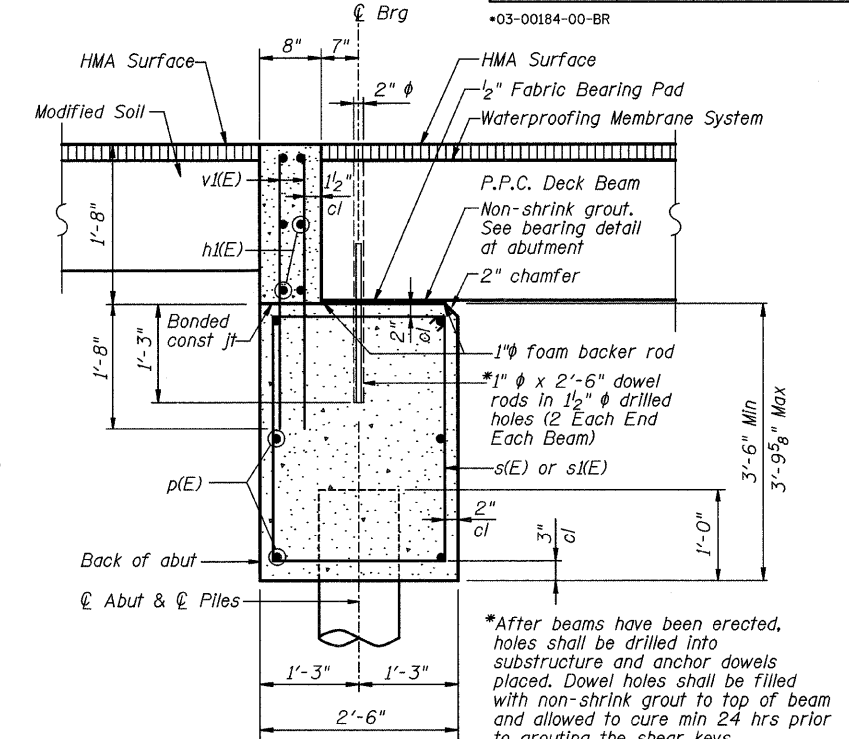
**PILE DATA:**

Type and Size: Metal Shell 12 in dia x 0.25 in walls  
 Nominal Required Bearings: 159 kips  
 Allowable Resistance Available: 53 kips  
 Est. Length: 21'  
 No. Production Piles: 6  
 No. Test Piles: 0

**ELEVATION**

**MIN BAR LAP**

#4 bar = 1'-8"  
 #7 bar = 3'-5"



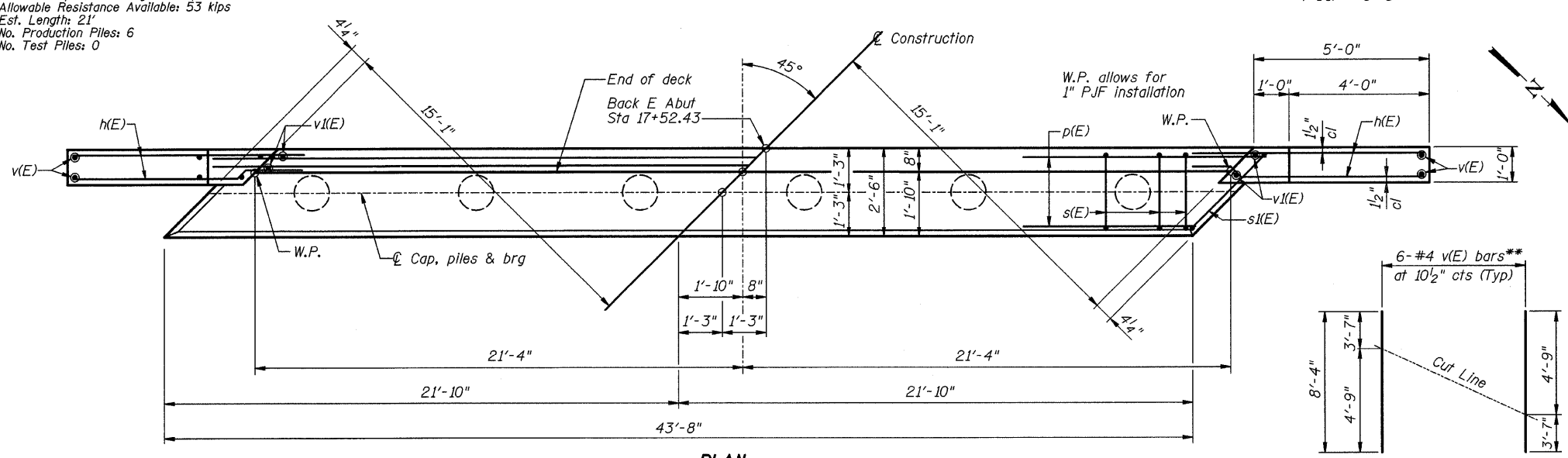
**SECTION THRU ABUTMENT**

(Dimensions at Rt L's)

**BILL OF MATERIAL**

Bar	No.	Size	Length	Shape
h(E)	24	#4	7'-2"	—
h(K)	12	#4	22'-2"	—
p(E)	12	#7	24'-3"	—
s(E)	39	#4	11'-3"	□
s(K)	2	#4	13'-1"	□
u(E)	8	#7	11'-11"	┌
v(E)	12	#4	8'-4"	—
v(K)	90	#4	3'-4"	—
Structure Excavation	Cu Yd		68	
Concrete Structures	Cu Yd		18.3	
Reinforcement Bars (Epoxy Coated)	Pound		1660	
Furnishing Metal	Foot		126	
Pile Shells 12"x0.250"	Foot		126	
Driving Piles	Foot		126	
Controlled Low Strength Material	Cu Yd		34	

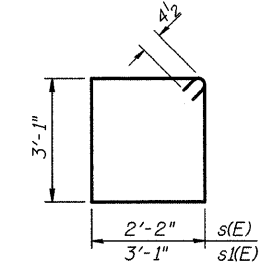
Reinforcement bars designated (E) shall be epoxy coated.



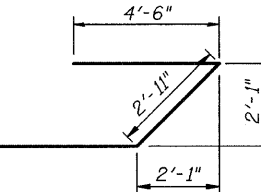
**PLAN**

**FIELD CUTTING DIAGRAM**

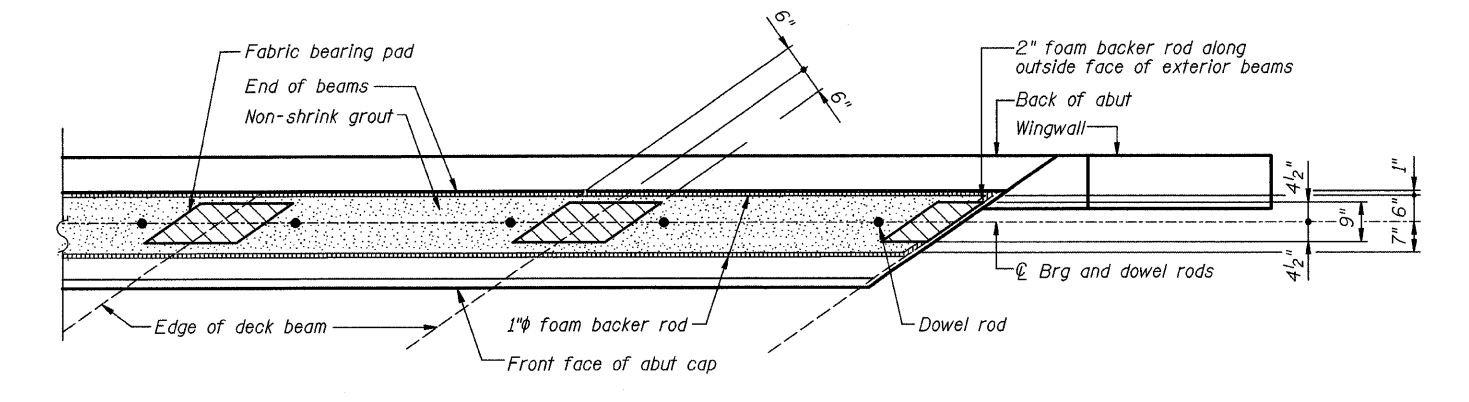
\*\*Order v(E) full length. Cut as shown and use remainder of bars in opposite face.



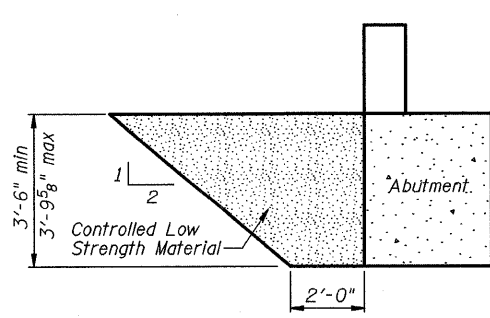
**BARS s(E) & s(K)**



**BAR u(E)**



**ALTERNATE FIXED BEARINGS AT ABUTMENT**



**CONTROLLED LOW STRENGTH MATERIAL LIMITS**

CH 20 OVER TRIBUTARY TO STEVENS CREEK  
**EAST ABUTMENT DETAILS**

REVISIONS	CH 20	SECTION 03-00184-00-BR	DRAWN BY DATE
NO.	DATE	SN 058-3370	R KING 6/09
1		MACON	CHECKED BY DATE
2			JMB 6/09
3			BOOK NUMBER
4			
5			
6			
7			
8			
9			
10			

HOMER L. CHASTAIN & ASSOCIATES, LLP  
 CONSULTING ENGINEERS  
 184-08197

DECATUR CHICAGO  
 (217) 422-8444 (773) 714-0050

ROCKFORD  
 (815) 489-0050

PROJECT NO. 4901  
 SHEET NO.