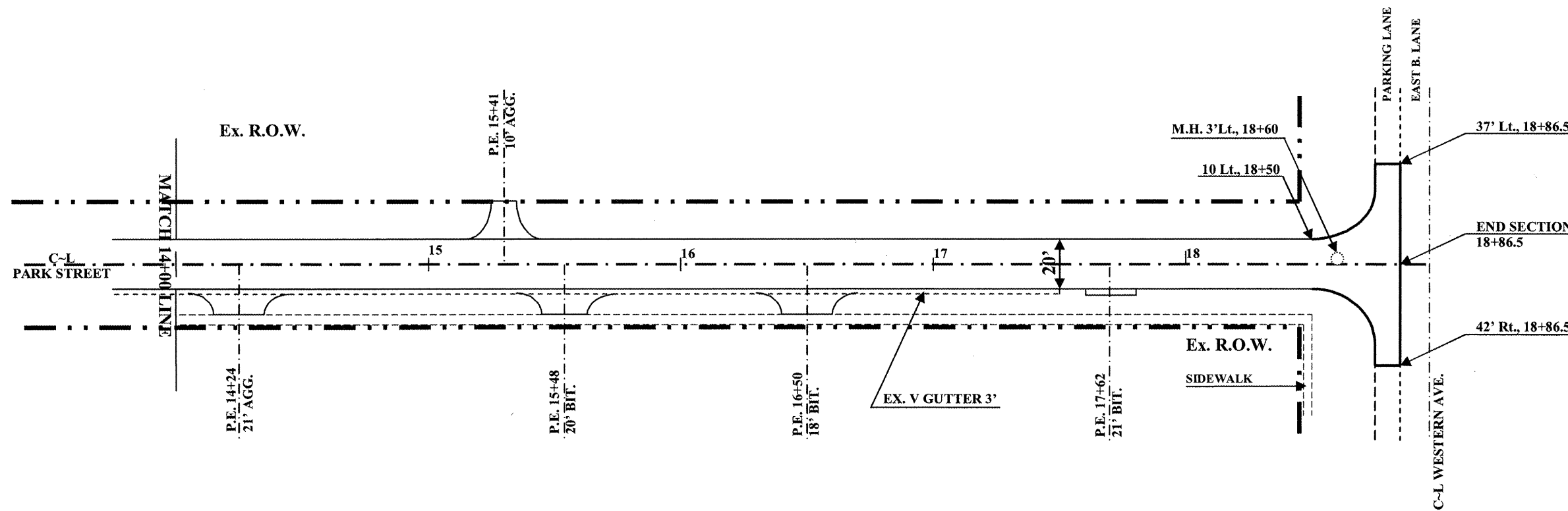


PLAN VIEW

PARK STREET
 CITY OF MATTOON
 SECTION 09-00182-00-RS
 CONTRACT#: 95610
 ROUTE: F.A.U.7707/PARK St.
 COLES COUNTY
 SHEET 13 OF 54



X0325599 PARTIAL DEPTH PATCHING 2"
 8'-10' Rt., 17+72 ~ 18+50 = 2 TON
 4'-10' Lt., 17+93 ~ 18+11 = 2 TON
TOTAL = 4 TON

XX004847 STONE DRIVE REMOVAL
 P.E. 14+24 Rt. = 25.8 SQ. YDS.
 P.E. 15+41 Lt. = 16.0 SQ. YDS.
TOTAL = 41.8 SQ. YDS.

40600982 HMA SURF REM BUTT JT (1-1/2")
 10' Lt. ~ Rt., 18+56.5 ~ 37' Lt. ~ 42' Rt. 18+86.5 = 168.6 SQ. YDS.
TOTAL = 168.6 SQ. YDS.

40603310 HMA SC C N50
 P.E. 10' ~ 12' Rt., 17+52 ~ 17+72 = 1 TON
 10' Lt., 18+50 to 37' Lt., 18+86.5 = 4 TON
 10' Rt., 18+50 to 42' Rt., 18+86.5 = 4 TON
TOTAL = 9 TON

40800050 INCIDENTAL HMA SURF
 P.E. 14+24 Rt. = 4 TON
 P.E. 15+41 Lt. = 6 TON
 P.E. 15+48 Rt. = 4 TON
 P.E. 16+50 Rt. = 4 TON
TOTAL = 18 TON

60300350 MAN FRAMES ADJUST
 3' Lt., 18+60 = 1 EACH
TOTAL = 1 EACH

JOB: C-97-030-10
 PROJECT: ARA-M-5042(018)
 SCALE: 1" = 50'