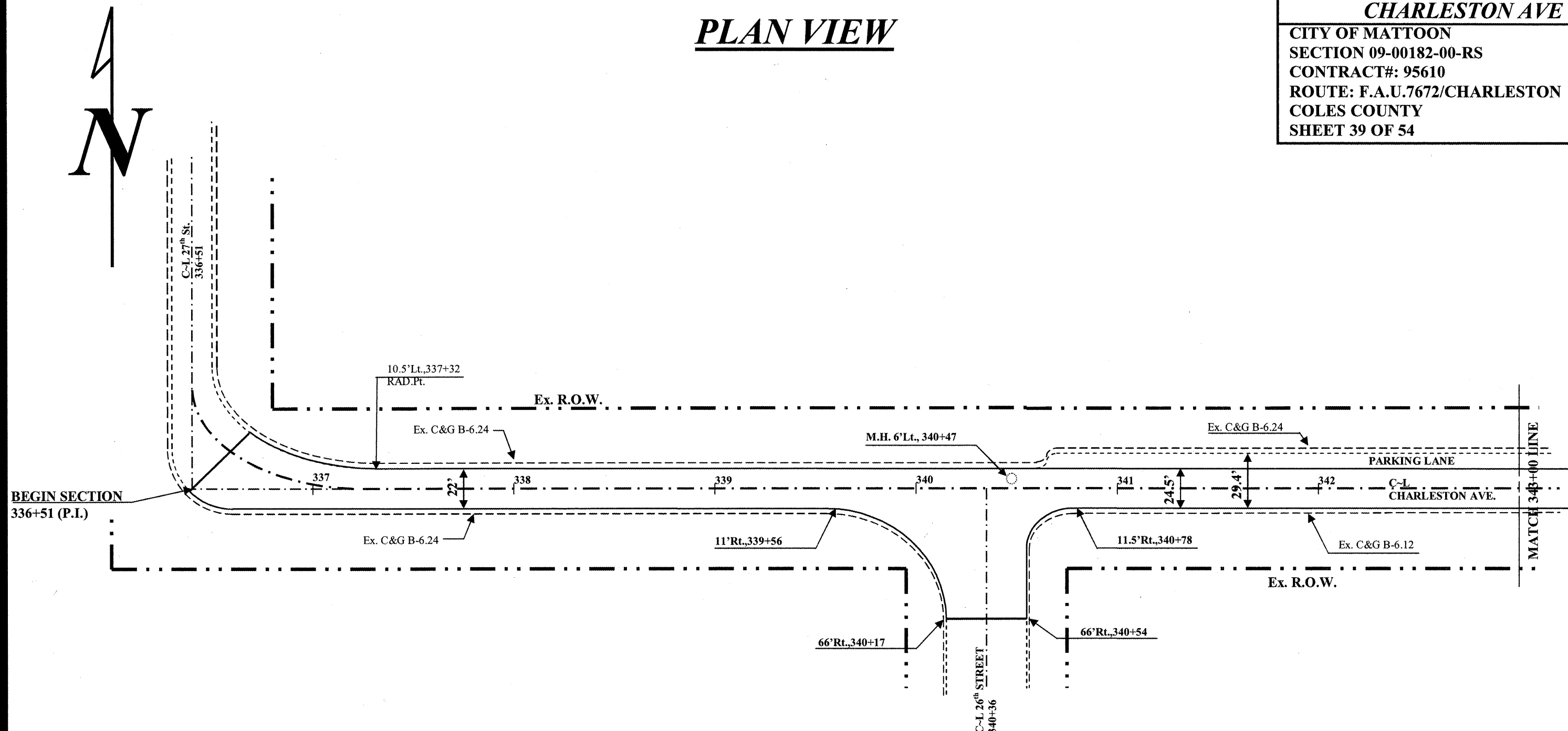


# PLAN VIEW

## CHARLESTON AVE

CITY OF MATTOON  
SECTION 09-00182-00-RS  
CONTRACT#: 95610  
ROUTE: F.A.U.7672/CHARLESTON  
COLES COUNTY  
SHEET 39 OF 54



BEGIN SECTION  
336+51 (P.I.)

MATCH 343+00 LINE

**X0325599 PARTIAL DEPTH PATCHING 2"**  
9.5'~11.5'Rt., 341+63 ~ 341+82 = 0.5 TON  
TOTAL= 0.5 TON

**40600625 LEVELING BINDER MM, N50**  
10'~56'Rt., 339+56 ~ 340+78 = 10 TON  
C~L., 336+51 (P.I.) ~ 10' Rt., 337+32 = 11 TON  
TOTAL = 21 TON

**40600982 HMA SURF REM BUTT JT (1-1/2")**  
56'~66'Rt., 340+16 ~ 340+54 = 42.2 SQ. YD.  
TOTAL= 42.2 SQ. YD.

**40603310 HMA SC C N50**  
C~L., 336+51 ~ 11' Rt., 337+32 = 22 TON  
11'~66'Rt., 339+56 ~ 340+78 = 25 TON  
TOTAL = 47 TON

**44001700 COMB C C&G REM & REPL**  
11.5'Rt., 341+55~341+83 = 28.0 FOOT  
TOTAL= 28.0 FOOT

**44201765 CLASS D PATCHES TY2, 10 INCH**  
2' ~ 10.5'Lt., 338+56 ~ 338+64 = 7.6 SQ. YD.  
TOTAL = 7.6 SQ. YD.

**44201771 CLASS D PATCHES TY4, 10 INCH**  
2Lt.' ~ 11.5'Rt., 338+49 ~ 338+60 = 16.5 SQ. YD.  
TOTAL= 16.5 SQ. YD.

**60300350 MAN FRAMES ADJUST**  
6' Lt., 340+47 = 1.0 EACH  
TOTAL = 1.0 EACH

JOB: C-97-030-10  
PROJECT: ARA-M-5042(018)  
SCALE: 1" = 50'