

SUMMARY OF QUANTITIES

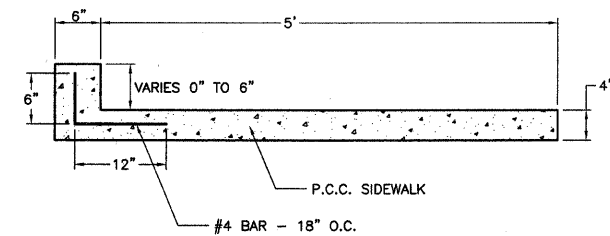
ITEM	UNIT	QUANT.
20100210	TREE REMOVAL (OVER 15 UNITS DIAMETER)	UNIT 340
20200100	EARTH EXCAVATION	CU.YD. 1345
20800150	TRENCH BACKFILL	CU.YD. 184
25000900	SEEDING, CLASS 1 (SPECIAL)	ACRE 0.25
28000250	TEMPORARY EROSION CONTROL SEEDING	POUND 400
28000500	INLET AND PIPE PROTECTION	EACH 13
35100100	AGGREGATE BASE COURSE, TYPE A	TON 1,205
35101400	AGGREGATE BASE COURSE, TYPE B	TON 30
40200800	AGGREGATE SURFACE COURSE, TYPE B	TON 35
40800050	INCIDENTAL HOT-MIX ASPHALT SURFACING	TON 15
42300200	PORTLAND CEMENT CONCRETE DRIVEWAY PAVEMENT, 6 INCH	SQ.YD. 332
42400100	PORTLAND CEMENT CONCRETE SIDEWALK 4 INCH	SQ.FT. 4151
42400420	PORTLAND CEMENT CONCRETE SIDEWALK 4 INCH, SPECIAL	SQ.FT. 1236
42400800	DETECTABLE WARNINGS	SQ.FT. 168
44000100	PAVEMENT REMOVAL	SQ.YD. 3253
44000200	DRIVEWAY PAVEMENT REMOVAL	SQ.YD. 134
44000500	COMBINATION CURB AND GUTTER REMOVAL	FOOT 549
44000600	SIDEWALK REMOVAL	SQ.FT. 7077
50104400	CONCRETE HEADWALL REMOVAL	EACH 4
50105220	PIPE CULVERT REMOVAL	FOOT 720
54213657	PRECAST REINFORCED CONCRETE FLARED END SECTIONS 12"	EACH 1
550B0050	STORM SEWERS, CLASS B, TYPE 1 12"	FOOT 1365
550B0070	STORM SEWERS, CLASS B, TYPE 1 15"	FOOT 365
550B0090	STORM SEWERS, CLASS B, TYPE 1 18"	FOOT 330
550B0110	STORM SEWERS, CLASS B, TYPE 1 21"	FOOT 25
55100700	STORM SEWER REMOVAL 15"	FOOT 25
59300100	CONTROLLED LOW-STRENGTH MATERIAL	CU YD 35
60218400	MANHOLES, TYPE A, 4'-DIAMETER, TYPE 1 FRAME, CLOSED LID	EACH 4
60221100	MANHOLES, TYPE A, 5'-DIAMETER, TYPE 1 FRAME, CLOSED LID	EACH 1

SUMMARY OF QUANTITIES

ITEM	UNIT	QUANT.
60236200	INLETS, TYPE A, TYPE 8 GRATE	EACH 11
60237460	INLETS, TYPE A, TYPE 23 FRAME AND GRATE	EACH 37
60238610	INLETS, TYPE A, WITH SALVAGED GRATE	EACH 3
60244100	INLETS, SPECIAL, WITH TYPE 8 GRATE	EACH 1
60244213	INLETS, SPECIAL, WITH TYPE 23 FRAME AND GRATE	EACH 2
60255500	MANHOLES TO BE ADJUSTED	EACH 3
60266600	VALVE BOXES TO BE ADJUSTED	EACH 1
60500060	REMOVING INLETS	EACH 7
60603800	COMBINATION CONCRETE CURB AND GUTTER, TYPE B-6.12	FOOT 17
67100100	MOBILIZATION	L SUM 1
70102620	TRAFFIC CONTROL AND PROTECTION, STANDARD 701501	L SUM 1
70103700	TRAFFIC CONTROL COMPLETE	L SUM 1
* 78001110	PAINT PAVEMENT MARKING - LINE 4"	FOOT 322
* 78001180	PAINT PAVEMENT MARKING - LINE 24"	FOOT 140
LR420125	PORTLAND CEMENT CONCRETE PAVEMENT 7" (SPECIAL) WITH INTEGRAL CURB	SQ.YD. 5866
XX000717	STORM SEWER CONNECTION SPECIAL	EACH 7
XX003474	PIPE TEE, 18" PIPE WITH 12" RISER	EACH 4
XX005239	PIPE TEE, 15" PIPE WITH 12" RISER	EACH 8
XX007267	PIPE TEE, 12" PIPE WITH 12" RISER	EACH 12
Z0051500	REMOVING AND RESETTING STREET SIGNS	EACH 11

* SPECIALTY ITEMS

ROUTE	SECTION	CITY	TOTAL SHEETS	SHEET NO.
F.A.U. 8484	09-00080-00-PV	OLNEY	19	3
CONTRACT NO. 95615		ILLINOIS		

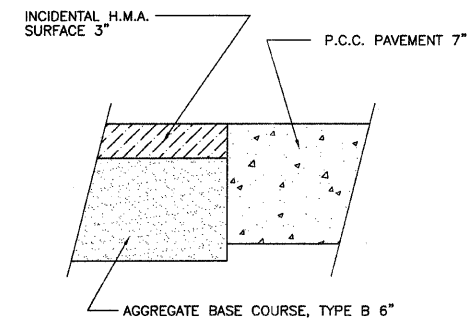


P.C.C. SIDEWALK SPECIAL DETAILS

LT. STA. 3+25 TO 4+20
LT. STA. 5+90 TO 7+50

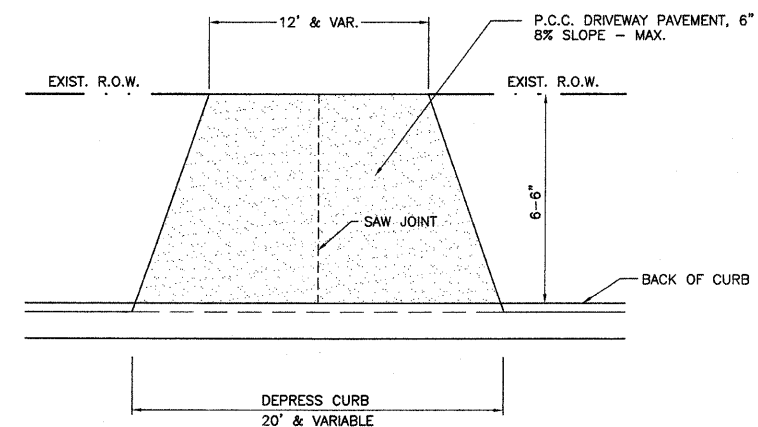
EXCAVATION AND EMBANKMENT

ITEM	CU.YD.
EXCAVATION	
PAVEMENT REMOVAL	300
EARTH EXCAVATION	1345
TOTAL	1645
OTHER SOURCES OF EARTH FROM TRENCHES FROM STORM SEWER	160
	75
TOTAL	235
EMBANKMENT ROADWAY	70



ROADWAY TRANSITION DETAILS

LT. & RT. STA. 4+60
RT. STA. 11+35



PRIVATE ENTRANCE DETAILS

NOTES

- DRIVEWAYS WIDER THAN 30' AT THE CURB SHALL HAVE SAW JOINTS AT 15' SPACING MAX.