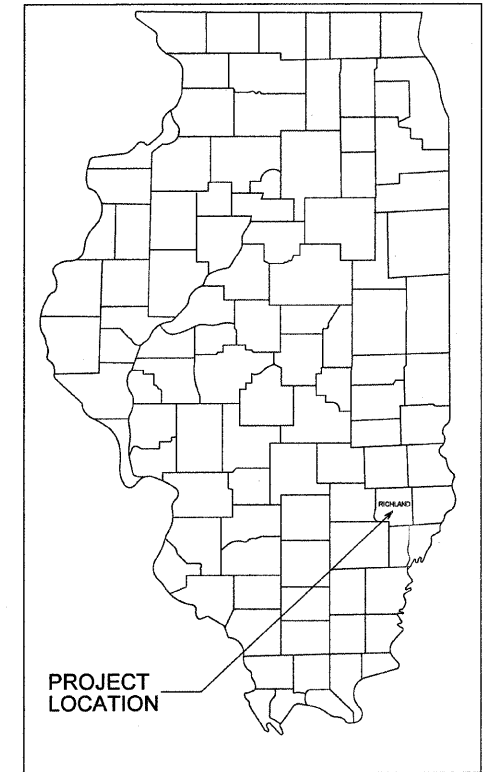


STATE OF ILLINOIS
DEPARTMENT OF TRANSPORTATION
DIVISION OF HIGHWAYS

PLANS FOR PROPOSED
AMERICAN RECOVERY AND REINVESTMENT ACT PROJECT
SECTION 09-00080-00-PV CITY OF OLNEY

ROUTE	SECTION	CITY	TOTAL SHEETS	SHEET NO.
FAU 8484	09-00080-00-PV	OLNEY	19	1
CONTRACT NO. 95615		ILLINOIS		



PROJECT LOCATION

INDEX OF SHEETS

SHEET	ITEM
1	COVER SHEET
2	TYPICAL SECTIONS
3	SUMMARY OF QUANTITIES
4	DRAINAGE STRUCTURES / STORM SEWER
5-7	PLAN & PROFILE
8	INTERSECTION DETAILS
9	EROSION CONTROL
10-19	CROSS SECTIONS
	STANDARD 000001-05
	STANDARD 280001-05
	STANDARD 420001-07
	STANDARD 424001-05
	STANDARD 542301-02
	STANDARD 602301-02
	STANDARD 602305-02
	STANDARD 602401-02
	STANDARD 602601-02
	STANDARD 602701-02
	STANDARD 604001-03
	STANDARD 604036-02
	STANDARD 604051-03
	STANDARD 604085-02
	STANDARD 606001-04
	STANDARD 701006-03
	STANDARD 701301-03
	STANDARD 701311-03
	STANDARD 701501-05
	STANDARD 701501-01
	STANDARD 780001-02
	STANDARD BLR 10-6
	STANDARD BLR 21-8
	STANDARD BLR 22-6

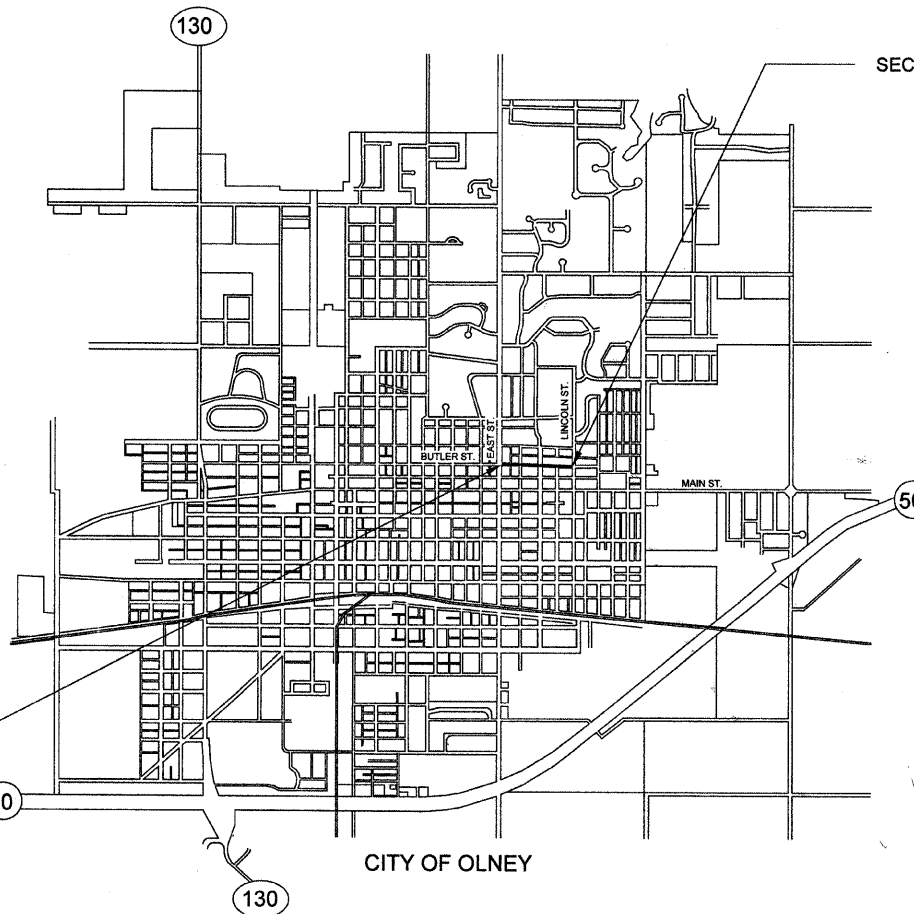
JOB NO. C-97-016-10

PROJECT NO. ARA-M-5051(011)

FAU 8484 BUTLER STREET

PLAN 0' 20' 40'
PROFILE HOR. 0' 20' 40'
PROFILE VERT. 0' 5' 10'

Joint Utility Locating Information for Excavators
JULIE 1-800-892-0123



SECTION 09-00080-00-PV BEGINS STA. 0+94.80

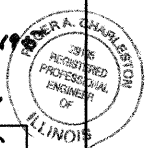
SECTION 09-00080-00-PV ENDS STA. 13+67.50

CONTRACT NO. 95615

URBAN COLLECTOR
ADT = 1050
DESIGN SPEED = 30 M.P.H.

NET LENGTH SECTION 09-00080-00-PV = 1272.70 FEET = 0.241 MILE

Roger A. Charleston
Ill. Reg. Prof. Eng. # 2919
1/4/2010
Lic. Expires 11/30/2011



CHARLESTON ENGINEERING, INC.
CONSULTING ENGINEERS
105 NORTH KITCHELL
P.O. BOX 397
OLNEY, ILLINOIS 62450
(618) 392-0736
ILLINOIS DEPARTMENT OF PROFESSIONAL REGULATION REGISTRATION #184.003513

APPROVED *January 5 2010*
Mark R. ...
MAYOR CITY OF OLNEY

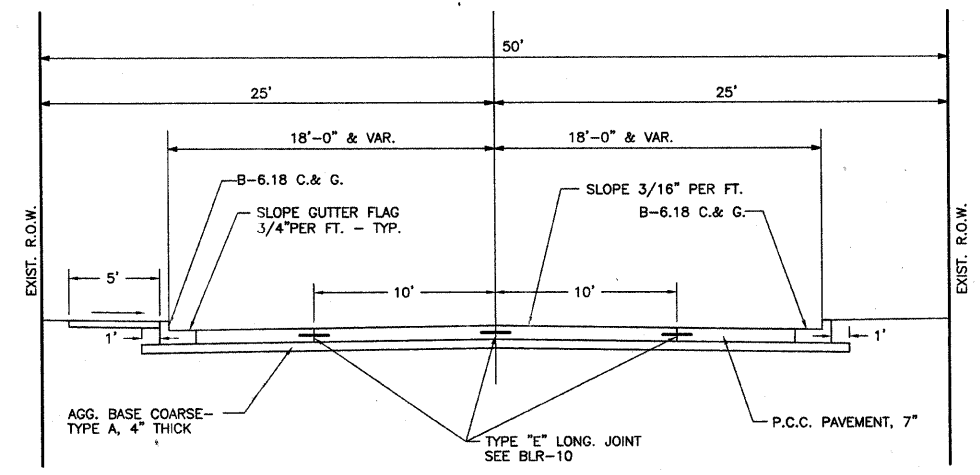
STATE OF ILLINOIS
DEPARTMENT OF TRANSPORTATION

PASSED *Jan 11 2010*
Maureen E. Kastl
DISTRICT SEVEN ENGINEER OF
LOCAL ROADS AND STREETS

Releasing For
Bid Based on
Limited Review

Jan 11 2010
Roger L. Drischell
DEPUTY DIRECTOR OF HIGHWAYS
REGION FOUR ENGINEER

ROUTE	SECTION	CITY	TOTAL SHEETS	SHEET NO.
F.A.U. 8484	09-0080-00-PV	OLNEY	19	2
CONTRACT NO. 95615		ILLINOIS		



TRANSVERSE JOINT SPACING SHALL BE AT 12.5 FEET

PROPOSED TYPICAL CROSS SECTION

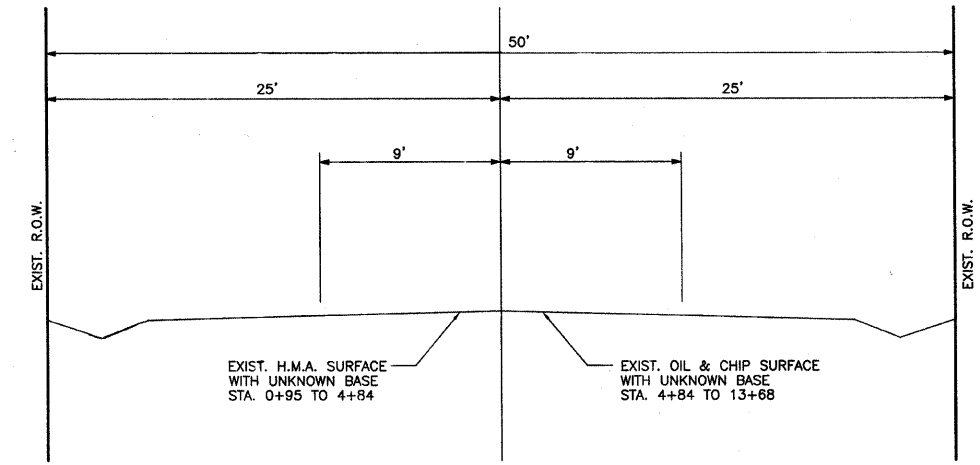
STA. 0+94.80 TO 13+68.00

PAVEMENT DESIGN DATA

ADT = 1050 CLASS III
P = 990
SU = 50
MU = 10
IBR = 3.0
T.F. = 0.50
URBAN COLLECTOR
PAVEMENT TYPE: P.C.C. PAVEMENT, 7"

GENERAL NOTES

- SEEDING: THIS WORK SHALL BE PERFORMED IN ACCORDANCE WITH THE APPLICABLE PORTIONS OF SECTION 250 OF THE STANDARD SPECIFICATIONS AND SHALL BE PAID FOR AT THE CONTRACT UNIT PRICE FOR SEEDING CLASS 1 (SPECIAL).
 - SPRING SEEDING SHALL EXTEND FROM JANUARY 1 TO JUNE 30
 - FALL SEEDING SHALL EXTEND FROM JULY 1 TO DECEMBER 31
- FERTILIZER NUTRIENTS SHALL BE APPLIED AT THE RATE OF 100 LB./ACRE
- MULCHING SHALL BE DONE IN ACCORDANCE WITH SECTION 251 OF THE STANDARD SPECIFICATIONS AND SHALL BE DONE BY METHOD 2, PROCEDURE 1 AT THE RATE OF 2 TONS PER ACRE.
- THE CONTRACTOR SHALL PROTECT AND CAREFULLY PRESERVE ALL PROPERTY MARKS AND MONUMENTS UNTIL THE OWNER, AN AUTHORIZED AGENT OR SURVEYOR HAS WITNESSED OR OTHERWISE REFERENCED THEIR LOCATION
- ALL EXISTING SIGNS REQUIRING RELOCATION SHALL BE STORED AND REINSTALLED BY THE CONTRACTOR
- NO PAYMENT FOR OVERHAUL WILL BE MADE ON THIS SECTION
- IT SHALL BE THE RESPONSIBILITY OF THE CONTRACTOR TO PROVIDE FOR THE DELIVERY OF THE U.S. MAIL TO RESIDENCES ALONG THE PROJECT.
- THE CONTRACTOR SHALL CONTACT J.U.L.I.E. BEFORE INSTALLING ANY TRAFFIC CONTROL SIGNS.
- ALL EXISTING PIPE CULVERTS SHALL BE REMOVED BY THE CONTRACTOR. ANY PIPE CULVERTS DEEMED SALVAGABLE BY THE ENGINEER SHALL BECOME THE PROPERTY OF THE CITY OF OLNEY AND SHALL BE STOCKPILED ON THE RIGHT-OF-WAY. THE CONTRACTOR SHALL DISPOSE OF ALL UNSALVAGABLE PIPE CULVERTS.
- EXCEPT FOR TREE REMOVAL, ALL OTHER CLEARING AND GRUBBING SHALL BE INCLUDED IN THE UNIT PRICE BID FOR EARTH EXCAVATION.



EXISTING TYPICAL CROSS SECTION

SUMMARY OF QUANTITIES

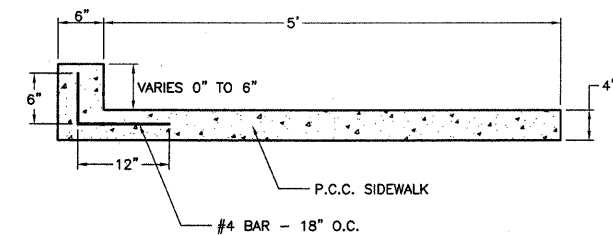
ITEM	UNIT	QUANT.
20100210	TREE REMOVAL (OVER 15 UNITS DIAMETER)	UNIT 340
20200100	EARTH EXCAVATION	CU.YD. 1345
20800150	TRENCH BACKFILL	CU.YD. 184
25000900	SEEDING, CLASS 1 (SPECIAL)	ACRE 0.25
28000250	TEMPORARY EROSION CONTROL SEEDING	POUND 400
28000500	INLET AND PIPE PROTECTION	EACH 13
35100100	AGGREGATE BASE COURSE, TYPE A	TON 1,205
35101400	AGGREGATE BASE COURSE, TYPE B	TON 30
40200800	AGGREGATE SURFACE COURSE, TYPE B	TON 35
40800050	INCIDENTAL HOT-MIX ASPHALT SURFACING	TON 15
42300200	PORTLAND CEMENT CONCRETE DRIVEWAY PAVEMENT, 6 INCH	SQ.YD. 332
42400100	PORTLAND CEMENT CONCRETE SIDEWALK 4 INCH	SQ.FT. 4151
42400420	PORTLAND CEMENT CONCRETE SIDEWALK 4 INCH, SPECIAL	SQ.FT. 1236
42400800	DETECTABLE WARNINGS	SQ.FT. 168
44000100	PAVEMENT REMOVAL	SQ.YD. 3253
44000200	DRIVEWAY PAVEMENT REMOVAL	SQ.YD. 134
44000500	COMBINATION CURB AND GUTTER REMOVAL	FOOT 549
44000600	SIDEWALK REMOVAL	SQ.FT. 7077
50104400	CONCRETE HEADWALL REMOVAL	EACH 4
50105220	PIPE CULVERT REMOVAL	FOOT 720
54213657	PRECAST REINFORCED CONCRETE FLARED END SECTIONS 12"	EACH 1
550B0050	STORM SEWERS, CLASS B, TYPE 1 12"	FOOT 1365
550B0070	STORM SEWERS, CLASS B, TYPE 1 15"	FOOT 365
550B0090	STORM SEWERS, CLASS B, TYPE 1 18"	FOOT 330
550B0110	STORM SEWERS, CLASS B, TYPE 1 21"	FOOT 25
55100700	STORM SEWER REMOVAL 15"	FOOT 25
59300100	CONTROLLED LOW-STRENGTH MATERIAL	CU YD 35
60218400	MANHOLES, TYPE A, 4'-DIAMETER, TYPE 1 FRAME, CLOSED LID	EACH 4
60221100	MANHOLES, TYPE A, 5'-DIAMETER, TYPE 1 FRAME, CLOSED LID	EACH 1

SUMMARY OF QUANTITIES

ITEM	UNIT	QUANT.
60236200	INLETS, TYPE A, TYPE 8 GRATE	EACH 11
60237460	INLETS, TYPE A, TYPE 23 FRAME AND GRATE	EACH 37
60238610	INLETS, TYPE A, WITH SALVAGED GRATE	EACH 3
60244100	INLETS, SPECIAL, WITH TYPE 8 GRATE	EACH 1
60244213	INLETS, SPECIAL, WITH TYPE 23 FRAME AND GRATE	EACH 2
60255500	MANHOLES TO BE ADJUSTED	EACH 3
60266600	VALVE BOXES TO BE ADJUSTED	EACH 1
60500060	REMOVING INLETS	EACH 7
60603800	COMBINATION CONCRETE CURB AND GUTTER, TYPE B-6.12	FOOT 17
67100100	MOBILIZATION	L SUM 1
70102620	TRAFFIC CONTROL AND PROTECTION, STANDARD 701501	L SUM 1
70103700	TRAFFIC CONTROL COMPLETE	L SUM 1
* 78001110	PAINT PAVEMENT MARKING - LINE 4"	FOOT 322
* 78001180	PAINT PAVEMENT MARKING - LINE 24"	FOOT 140
LR420125	PORTLAND CEMENT CONCRETE PAVEMENT 7" (SPECIAL) WITH INTEGRAL CURB	SQ.YD. 5866
XX000717	STORM SEWER CONNECTION SPECIAL	EACH 7
XX003474	PIPE TEE, 18" PIPE WITH 12" RISER	EACH 4
XX005239	PIPE TEE, 15" PIPE WITH 12" RISER	EACH 8
XX007267	PIPE TEE, 12" PIPE WITH 12" RISER	EACH 12
Z0051500	REMOVING AND RESETTING STREET SIGNS	EACH 11

* SPECIALTY ITEMS

ROUTE	SECTION	CITY	TOTAL SHEETS	SHEET NO.
F.A.U. 8484	09-00080-00-PV	OLNEY	19	3
CONTRACT NO. 95615		ILLINOIS		

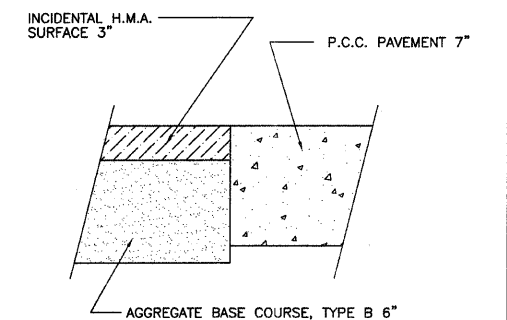


P.C.C. SIDEWALK SPECIAL DETAILS

LT. STA. 3+25 TO 4+20
LT. STA. 5+90 TO 7+50

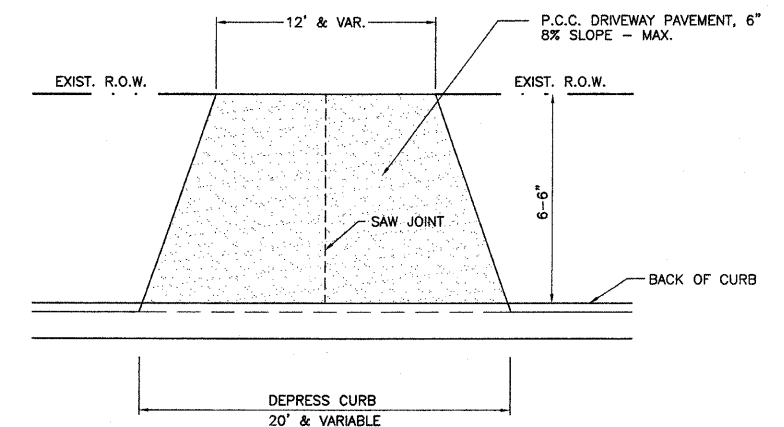
EXCAVATION AND EMBANKMENT

ITEM	CU.YD.
EXCAVATION	
PAVEMENT REMOVAL	300
EARTH EXCAVATION	1345
TOTAL	1645
OTHER SOURCES OF EARTH FROM TRENCHES FROM STORM SEWER	160
	75
TOTAL	235
EMBANKMENT ROADWAY	70



ROADWAY TRANSITION DETAILS

LT. & RT. STA. 4+60
RT. STA. 11+35

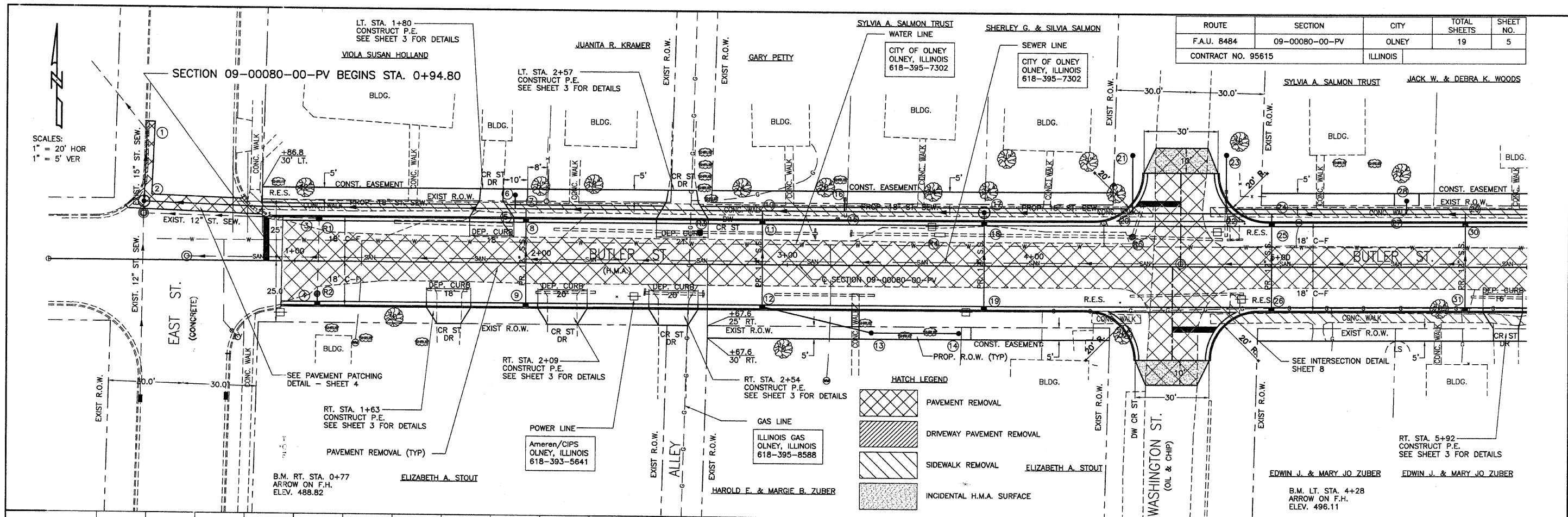


PRIVATE ENTRANCE DETAILS

NOTES

1. DRIVEWAYS WIDER THAN 30' AT THE CURB SHALL HAVE SAW JOINTS AT 15' SPACING MAX.

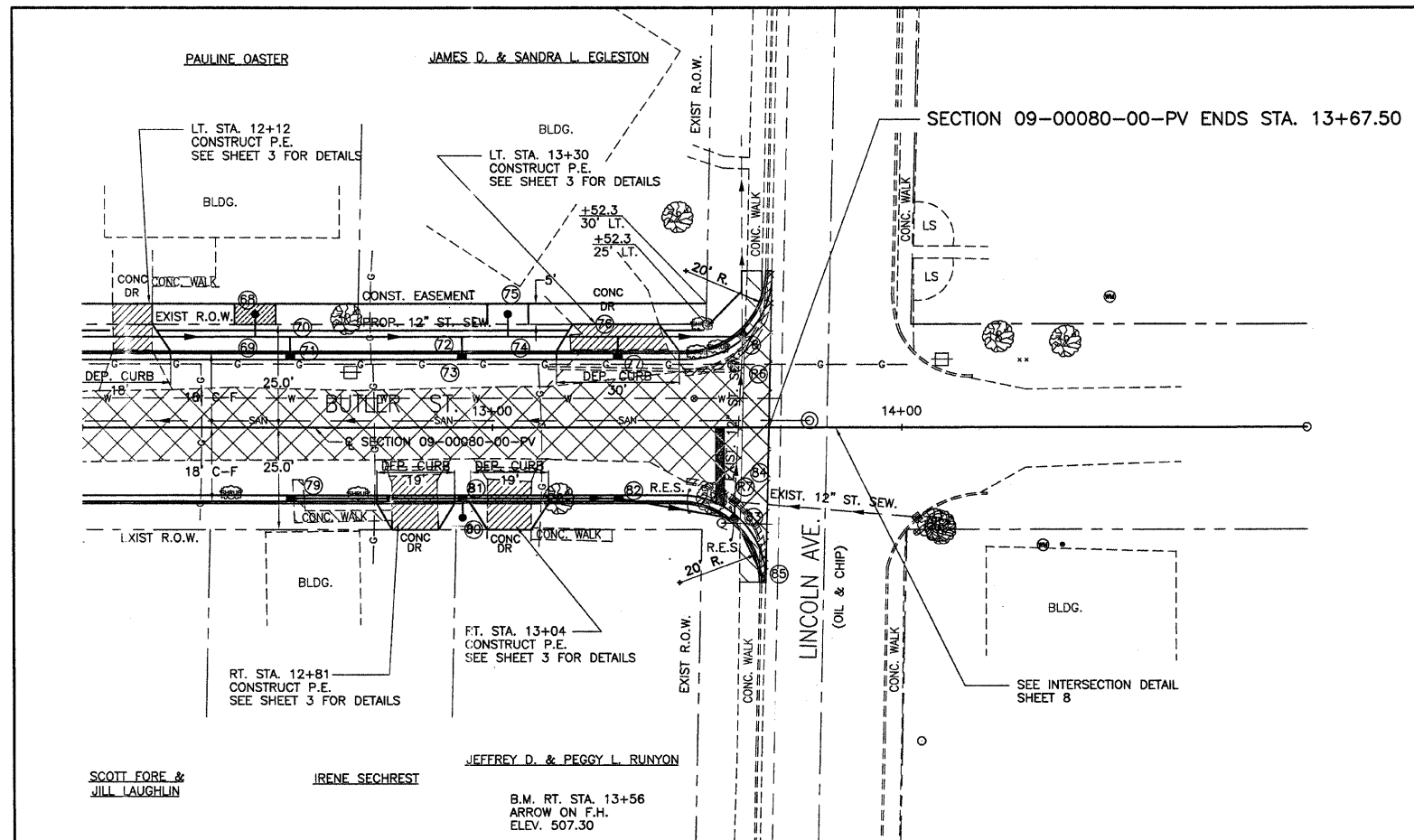
ROUTE	SECTION	CITY	TOTAL SHEETS	SHEET NO.
F.A.U. 8484	09-00080-00-PV	OLNEY	19	5
CONTRACT NO. 95615		ILLINOIS		



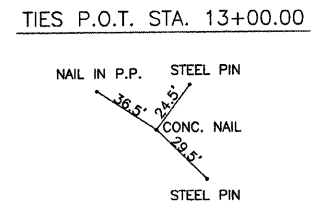
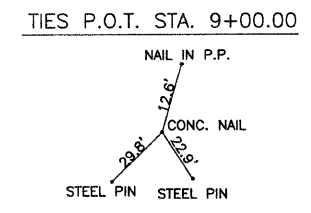
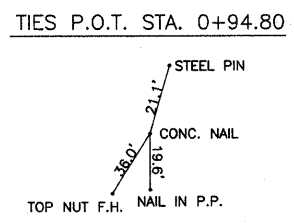
STATION	DESCRIPTION	QUANTITY	UNIT	STATION	DESCRIPTION	QUANTITY	UNIT	STATION	DESCRIPTION	QUANTITY	UNIT
510	PIPE CULVERT REMOVAL	18	FOOT		TR. B'FILL	0.6	CU.YD.		TREE REMOVAL (OVER 15 UNITS DIA.)	40	UNIT DIA.
	RT. STA. 1+62	18			STA. 0+95 TO 6+00				P.C.C. PAVEMENT 7" (SPL.) W/I.C.	2256	SQ. YD.
	LT. STA. 1+64	45							INCID. H.M.A. SURFACING	10	TON
	RT. STA. 2+10	25							AGG. SURF. CSE., TY.-B	20	TON
	LT. STA. 2+34	59									
505	RT. STA. 2+54	25			SIDEWALK REMOVAL	2793	SQ. FT.		AGG. BASE COURSE, TYPE A	495	TON
	LT. STA. 2+89	47			STA. 0+80 TO 6+00						
	RT. STA. 3+15	41			COMB. CONC. CURB & GUTTER, TYPE B-6.12	17	FOOT		P.C.C. SIDEWALK 4" SPECIAL	525	SQ. FT.
	LT. STA. 3+23	8			LT. STA. 0+78 TO 0+95				STORM SEWER REMOVAL 15"	55	FOOT
	LT. STA. 3+43	35									
	LT. STA. 4+02	75									
	LT. STA. 4+43	14									
	LT. STA. 4+55	38									
500	RT. STA. 4+62	48									
	LT. STA. 4+78	19									
	LT. STA. 4+82	7									
495	TOTAL 505 FT				TOTAL 37 C.Y.						
490											
485											
480											
475											
470											
465											

0+00 1+00 2+00 3+00 4+00 5+00 6+00

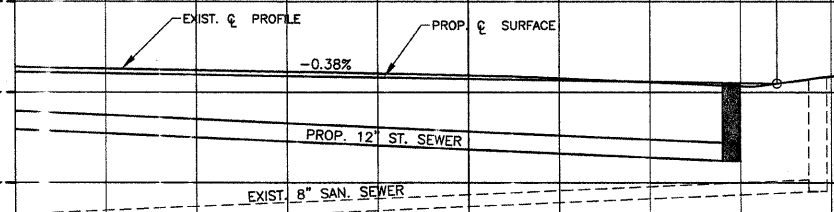
ROUTE	SECTION	CITY	TOTAL SHEETS	SHEET NO.
F.A.U. 8484	09-00080-00-PV	OLNEY	19	7
CONTRACT NO. 95615		ILLINOIS		



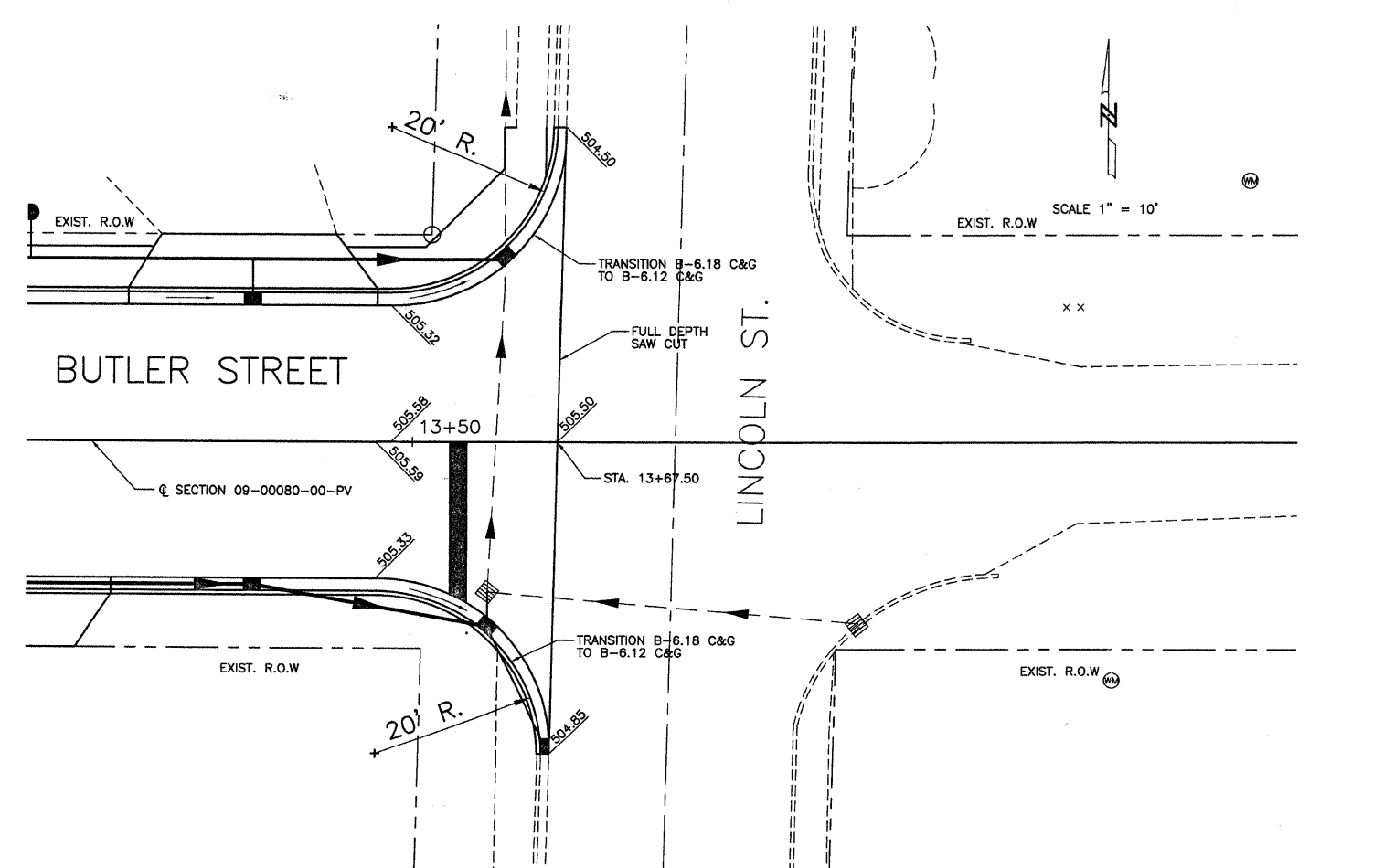
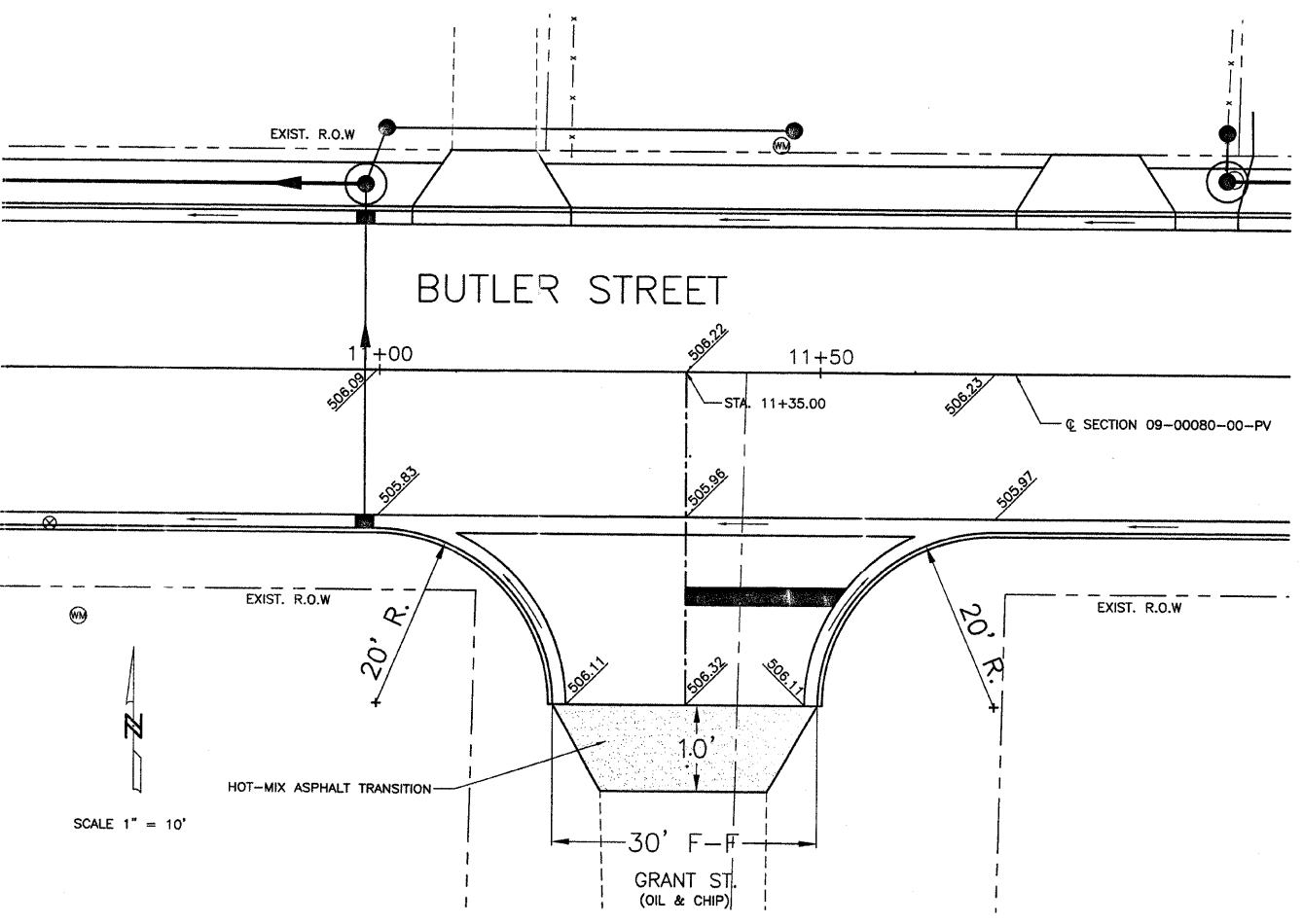
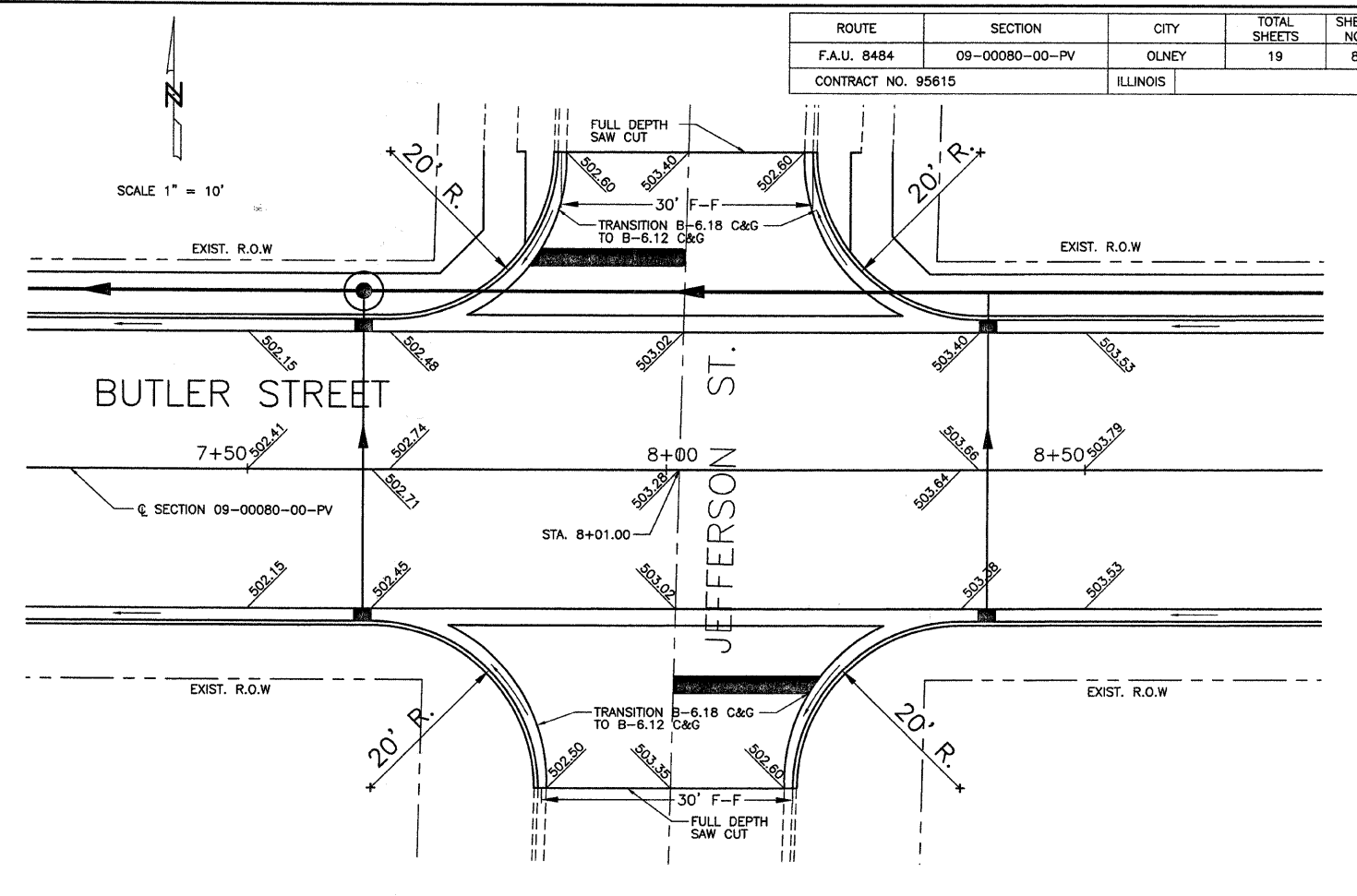
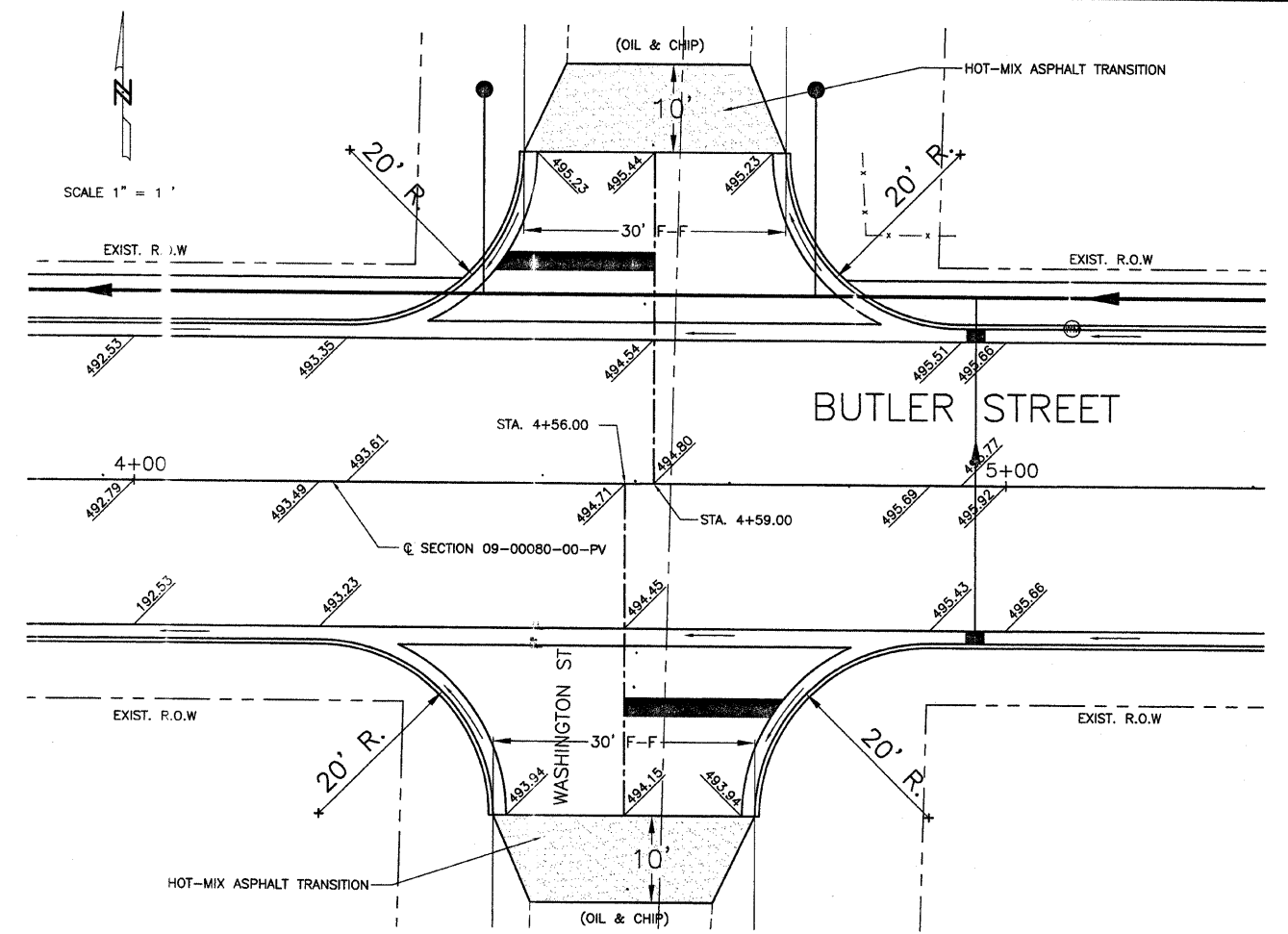
SCALES:
1" = 20' HOR
1" = 5' VER



525					DRIVEWAY PAV'T. REMOVAL	SQ. YD.		PAINT PAV'T. MARKING LINE 4"	FOOT			525
					LT. STA. 12+12 RT. STA. 12+81 RT. STA. 13+04 LT. STA. 13+30	12 17 15 22		STA. 12+00 TO 13+68	42			
520					VALVE BOXES TO BE ADJUSTED EACH			PAINT PAV'T. MARKING LINE 24"	FOOT			520
					STA. 13+60 TO 13+67	1		RT. STA. 13+55	20			
515					TREE REMOVAL (OVER 15 UNITS DIA.)	UNIT DIA.		AGG. BASE COURSE, TYPE A	TON			515
					STA. 12+00 TO 13+68	42		STA. 12+00 TO 13+68	160			
510					COMB. CURB & GUTTER REMOVAL	FOOT						510
					LT. & RT. STA. 13+47 TO 13+68	76						
505					SIDEWALK REMOVAL	SQ. FT.						505
					STA. 12+00 TO 13+68	210						
500					PIPE CULVERT REMOVAL	FOOT	TR. B'FILL CU.YD.					500
					RT. STA. 12+82 RT. STA. 13+03 LT. STA. 13+37	16 15 46	1.2 1.1 3.7					
495					DETECTABLE WARNINGS	SQ. FT.		P.C.C. DRIVEWAY PAV'T. 6"	SQ. YD.			495
					LT. STA. 12+00 TO 13+68	48		LT. STA. 12+12 RT. STA. 12+81 RT. STA. 13+04 LT. STA. 13+30	26 11 11 19			
490					P.C.C. SIDEWALK 4 INCH	SQ. FT.	PAVEMENT REMOVAL	SQ. YD.			TOTAL 67 SQ. YD.	490
					LT. STA. 12+00 TO 13+68	673	STA. 12+00 TO 13+68	384				
485					SEEDING CLASS 1 (SPL.)	ACRE	REM. & RESET STREET SIGNS	EACH		P.C.C. PAVEMENT 7" (SPL.) W/I.C.	SQ. YD.	485
					STA. 12+00 TO 13+68	0.03	STA. 12+00 TO 13+68	2		STA. 12+00 TO 13+68	724	
480	506.4 506.14	506.2 505.95	505.9 505.76	505.5 505.57	504.7							480
	12+00		13+00		14+00							



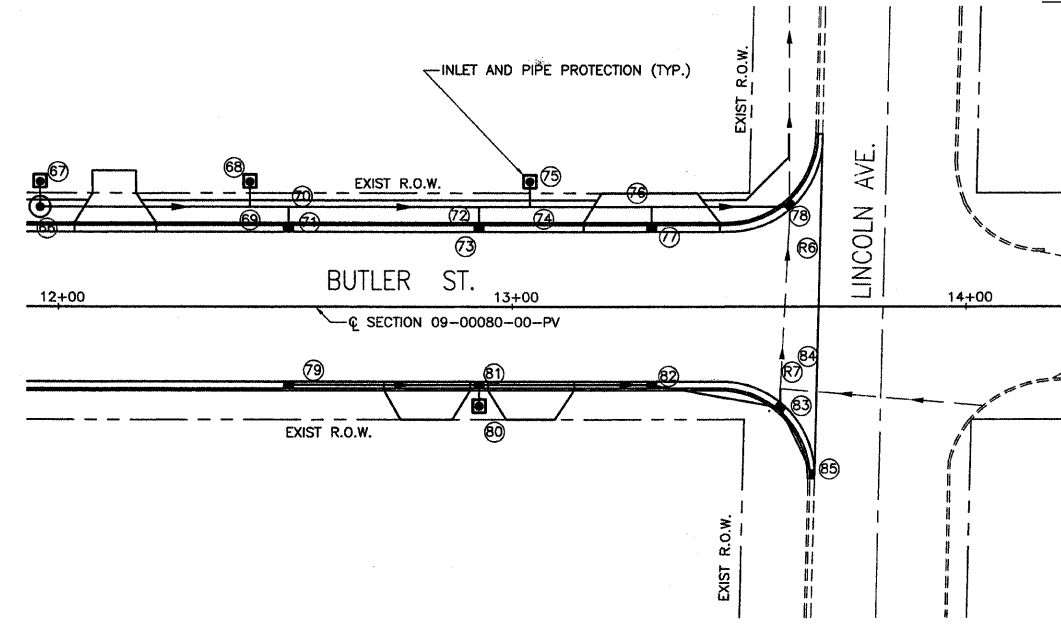
ROUTE	SECTION	CITY	TOTAL SHEETS	SHEET NO.
F.A.U. 8484	09-00080-00-PV	OLNEY	19	8
CONTRACT NO. 95615		ILLINOIS		



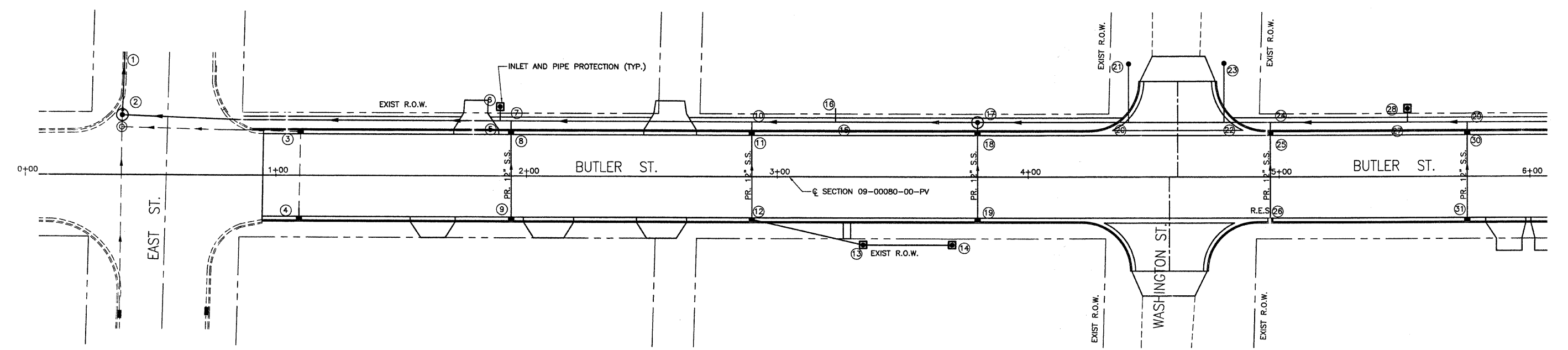
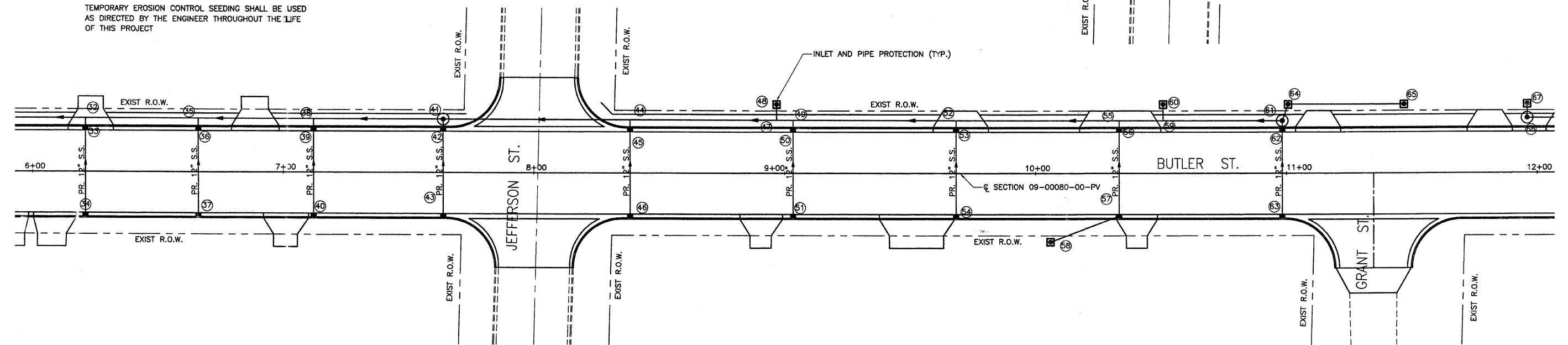
ROUTE	SECTION	CITY	TOTAL SHEETS	SHEET NO.
F.A.U. 8484	09-00080-00-PV	OLNEY	19	9
CONTRACT NO. 95615		ILLINOIS		

TEMPORARY EROSION CONTROL SEEDING POUND
 STA. 0+95 TO 13+67 400

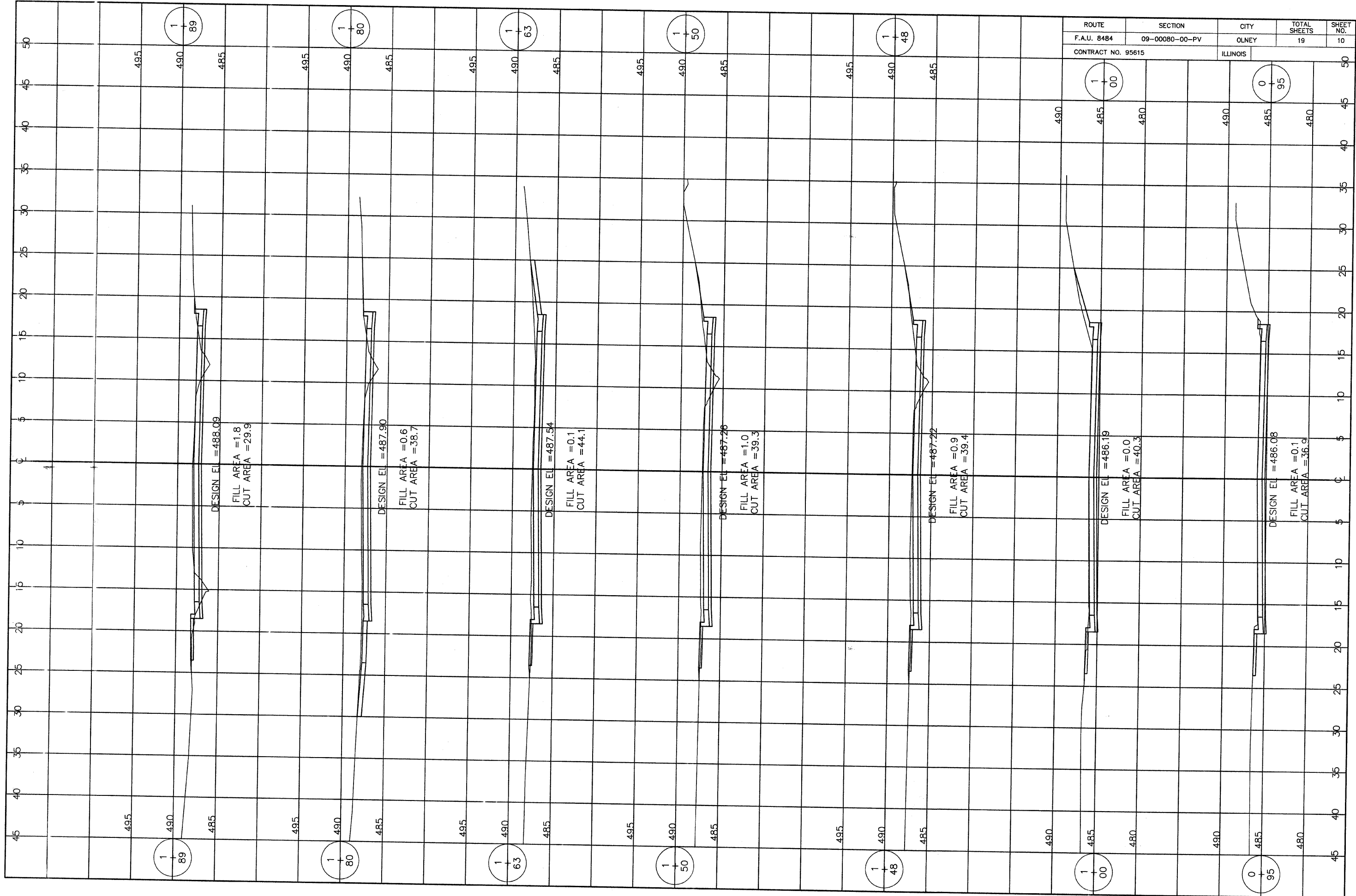
INLET AND PIPE PROTECTION EACH
 LT. STA. 0+95 TO 13+67 9
 RT. STA. 0+95 TO 13+67 4
 TOTAL 13 EACH



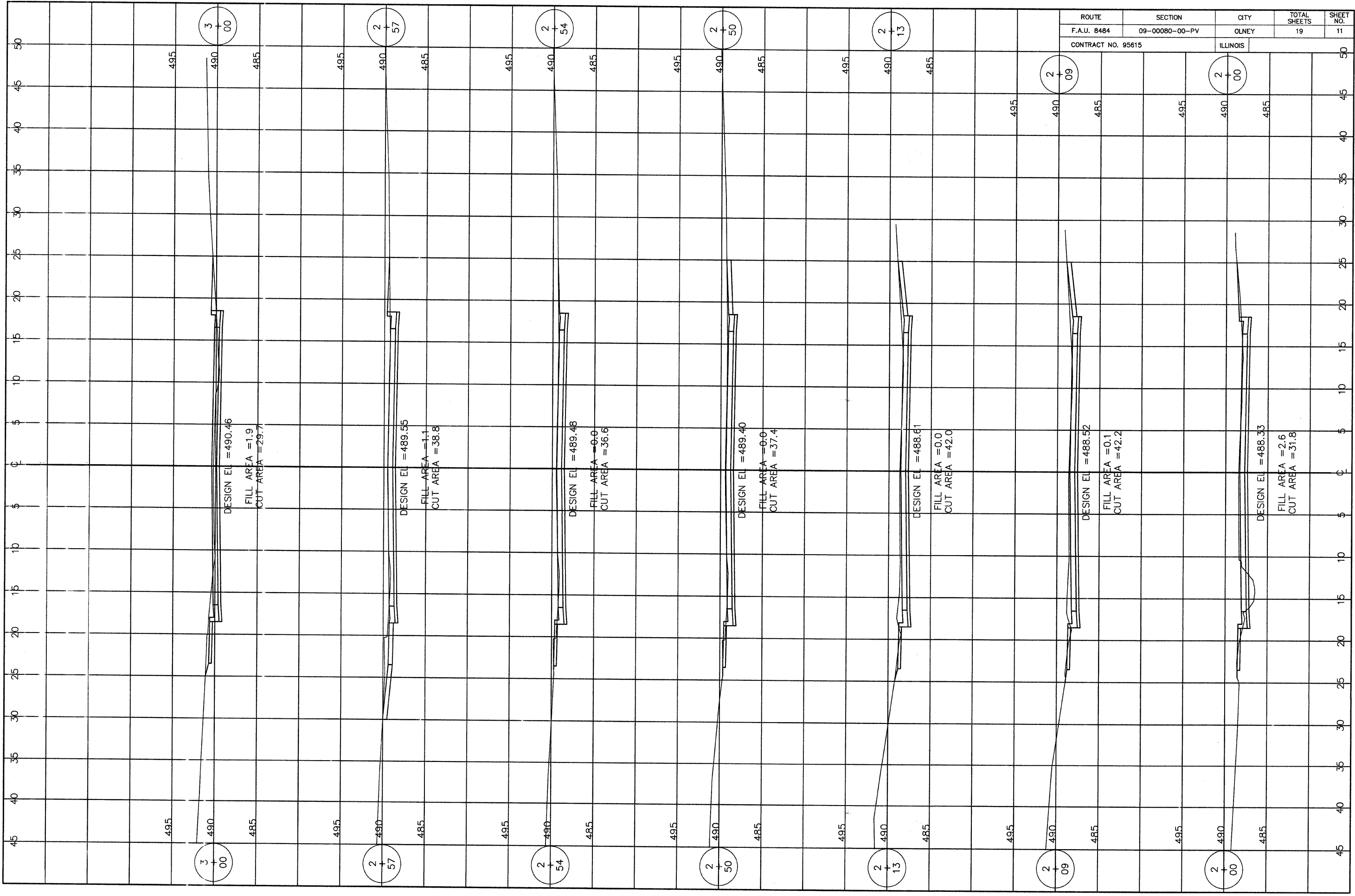
TEMPORARY EROSION CONTROL SEEDING SHALL BE USED AS DIRECTED BY THE ENGINEER THROUGHOUT THE LIFE OF THIS PROJECT



EROSION CONTROL DETAILS



ROUTE	SECTION	CITY	TOTAL SHEETS	SHEET NO.
F.A.U. 8484	09-00080-00-PV	OLNEY	19	10
CONTRACT NO. 95615		ILLINOIS		



ROUTE	SECTION	CITY	TOTAL SHEETS	SHEET NO.
F.A.U. 8484	09-00080-00-PV	OLNEY	19	11
CONTRACT NO. 95615		ILLINOIS		

DESIGN EL = 490.46
 FILL AREA = 1.9
 CUT AREA = 29.7

DESIGN EL = 489.55
 FILL AREA = 1.1
 CUT AREA = 38.8

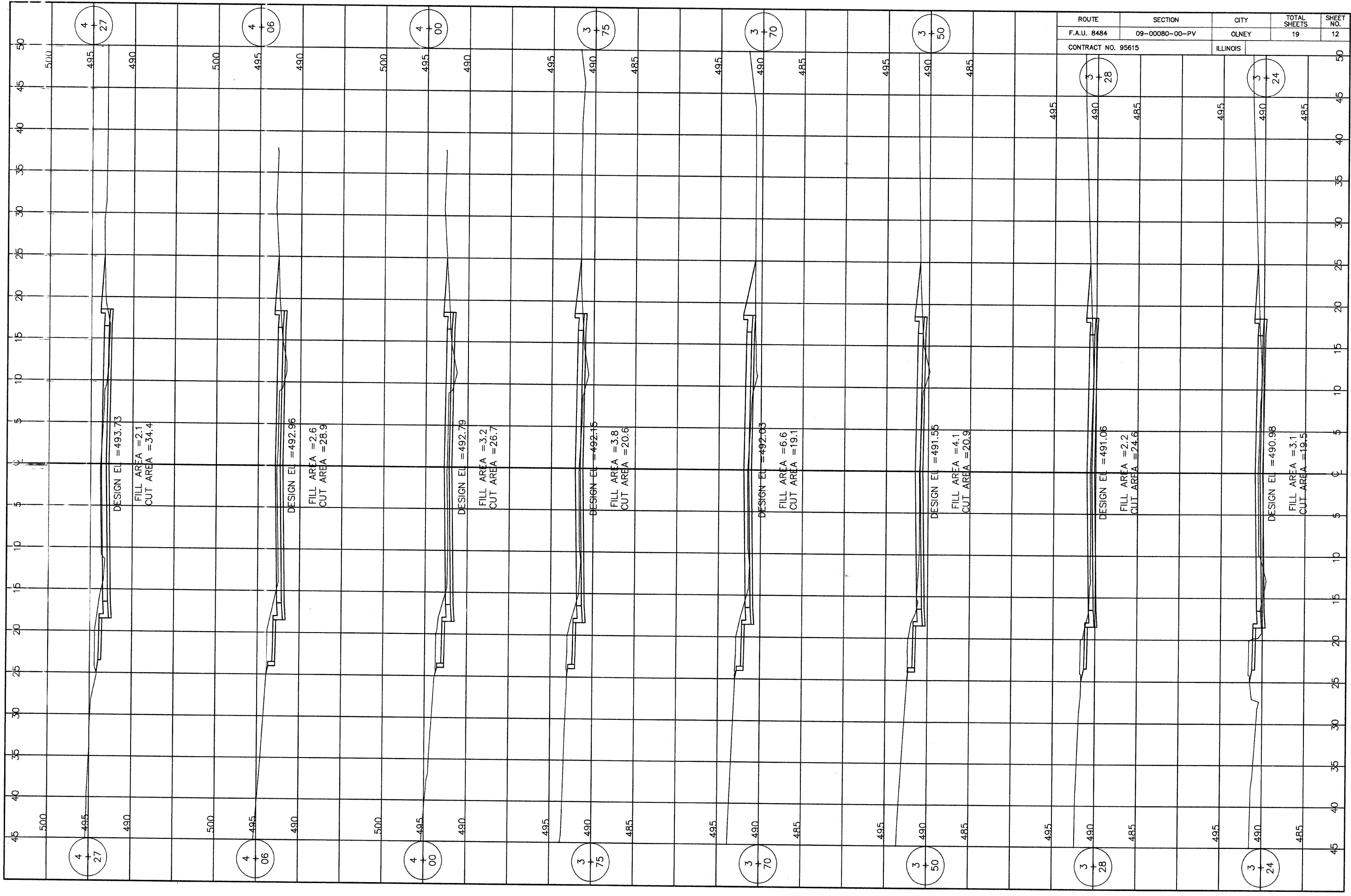
DESIGN EL = 489.48
 FILL AREA = 0.0
 CUT AREA = 36.6

DESIGN EL = 489.40
 FILL AREA = 0.0
 CUT AREA = 37.4

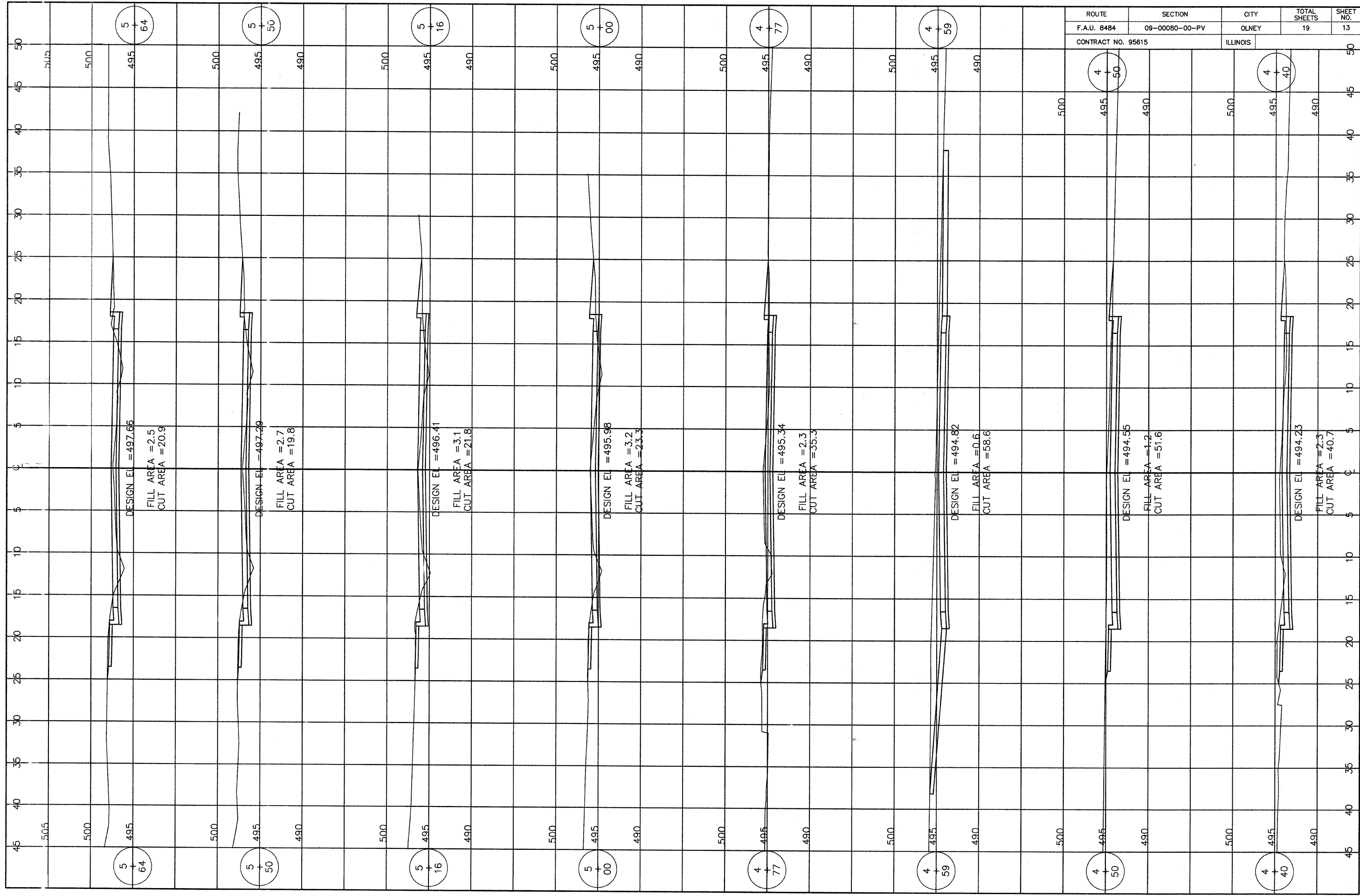
DESIGN EL = 488.61
 FILL AREA = 0.0
 CUT AREA = 42.0

DESIGN EL = 488.52
 FILL AREA = 0.1
 CUT AREA = 42.2

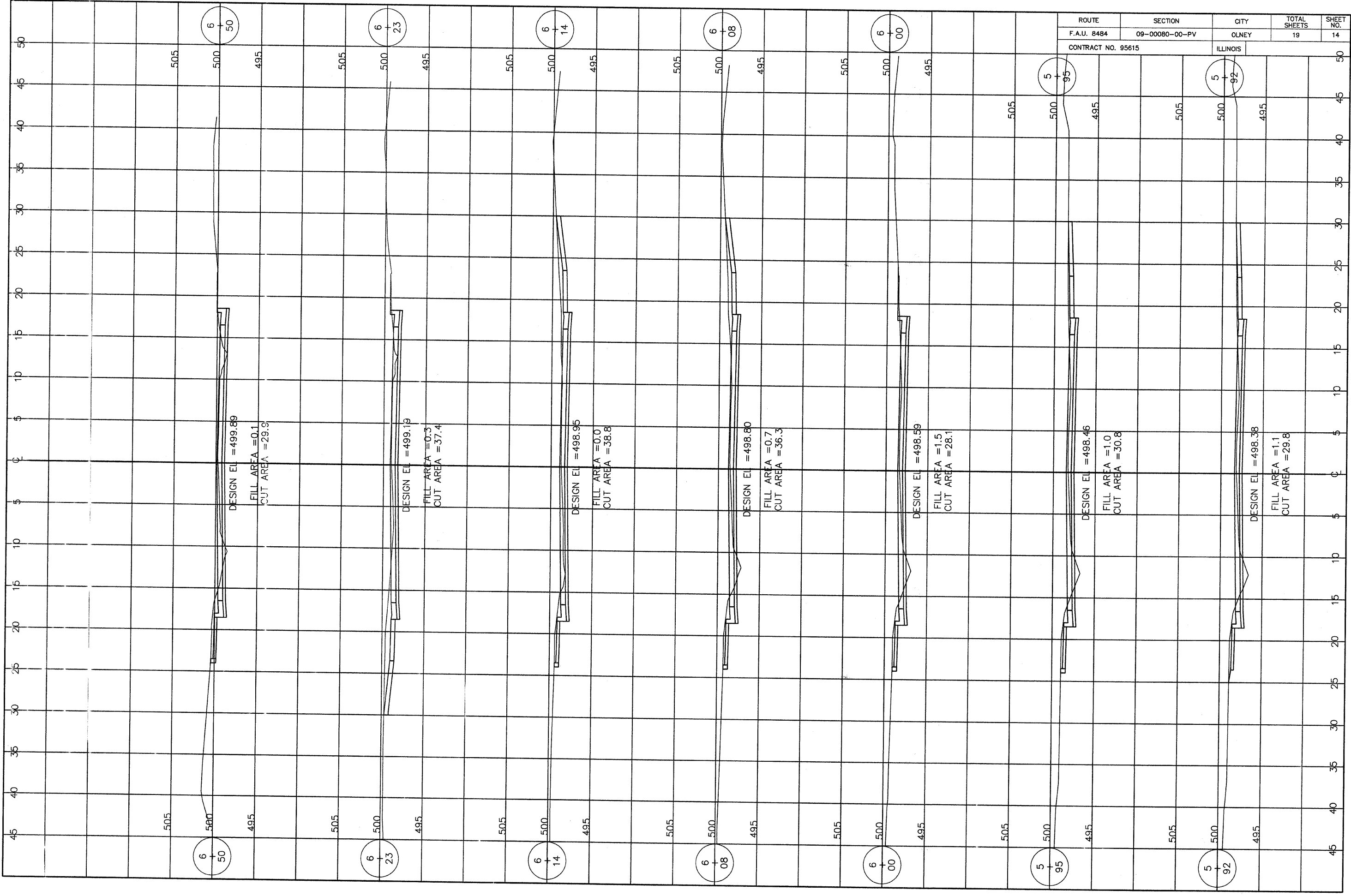
DESIGN EL = 488.33
 FILL AREA = 2.6
 CUT AREA = 31.8



ROUTE	SECTION	CITY	TOTAL SHEETS	SHEET NO.
F.A.U. 8484	09-00080-00-PV	OLNEY	19	12
CONTRACT NO. 95615		ILLINOIS		



ROUTE	SECTION	CITY	TOTAL SHEETS	SHEET NO.
F.A.U. 8484	09-00080-00-PV	OLNEY	19	13
CONTRACT NO. 95615		ILLINOIS		



ROUTE	SECTION	CITY	TOTAL SHEETS	SHEET NO.
F.A.U. 8484	09-00080-00-PV	OLNEY	19	14
CONTRACT NO. 95615		ILLINOIS		

DESIGN EL = 499.89
 FILL AREA = 0.1
 CUT AREA = 29.9

DESIGN EL = 499.19
 FILL AREA = 0.3
 CUT AREA = 37.4

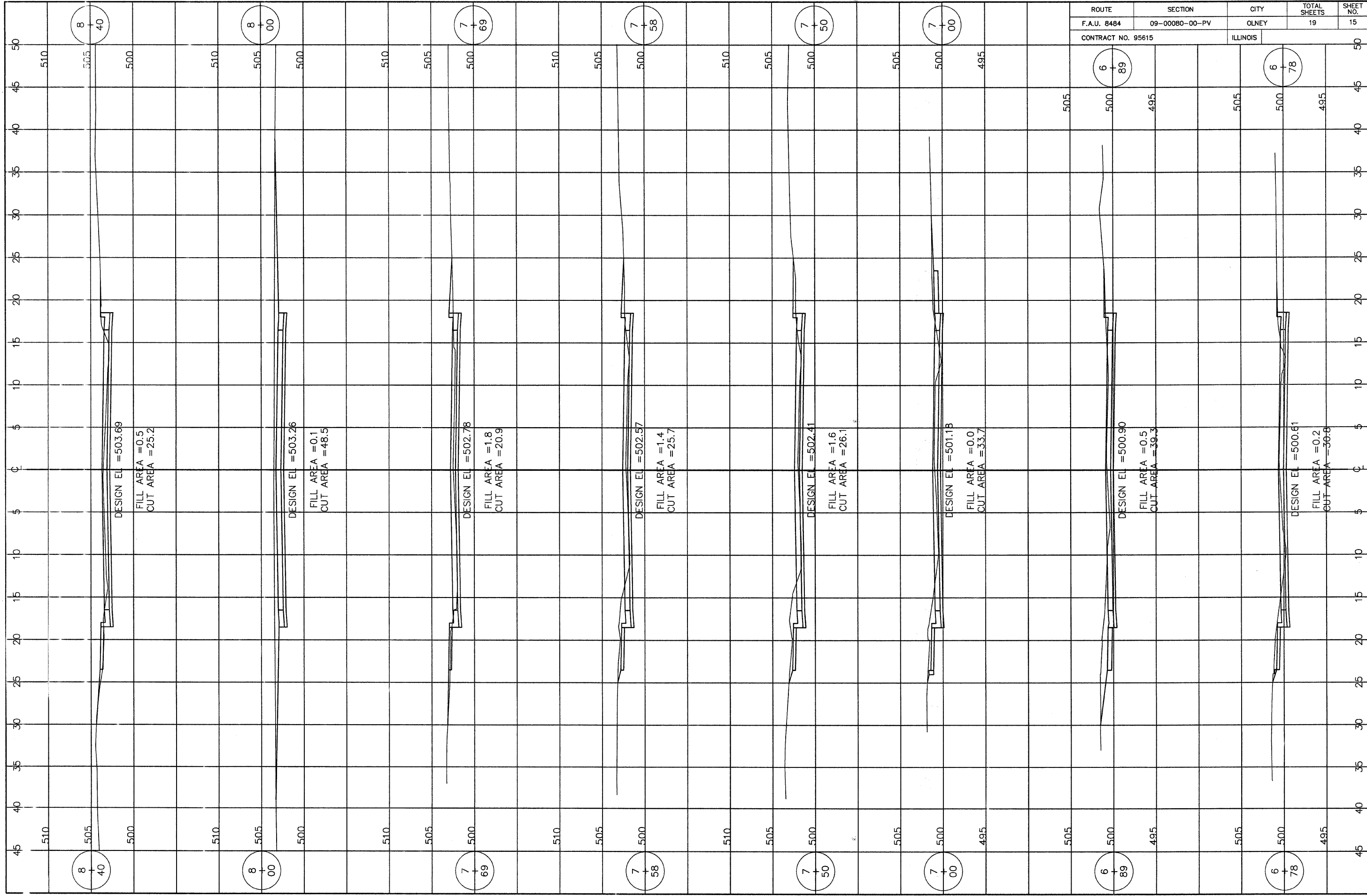
DESIGN EL = 498.96
 FILL AREA = 0.0
 CUT AREA = 38.8

DESIGN EL = 498.80
 FILL AREA = 0.7
 CUT AREA = 36.3

DESIGN EL = 498.59
 FILL AREA = 1.5
 CUT AREA = 28.1

DESIGN EL = 498.46
 FILL AREA = 1.0
 CUT AREA = 30.8

DESIGN EL = 498.38
 FILL AREA = 1.1
 CUT AREA = 29.8



8
+
40

8
+
00

7
+
69

7
+
58

7
+
50

7
+
00

6
+
89

6
+
78

DESIGN EL = 503.69
FILL AREA = 0.5
CUT AREA = 25.2

DESIGN EL = 503.26
FILL AREA = 0.1
CUT AREA = 48.5

DESIGN EL = 502.78
FILL AREA = 1.8
CUT AREA = 20.9

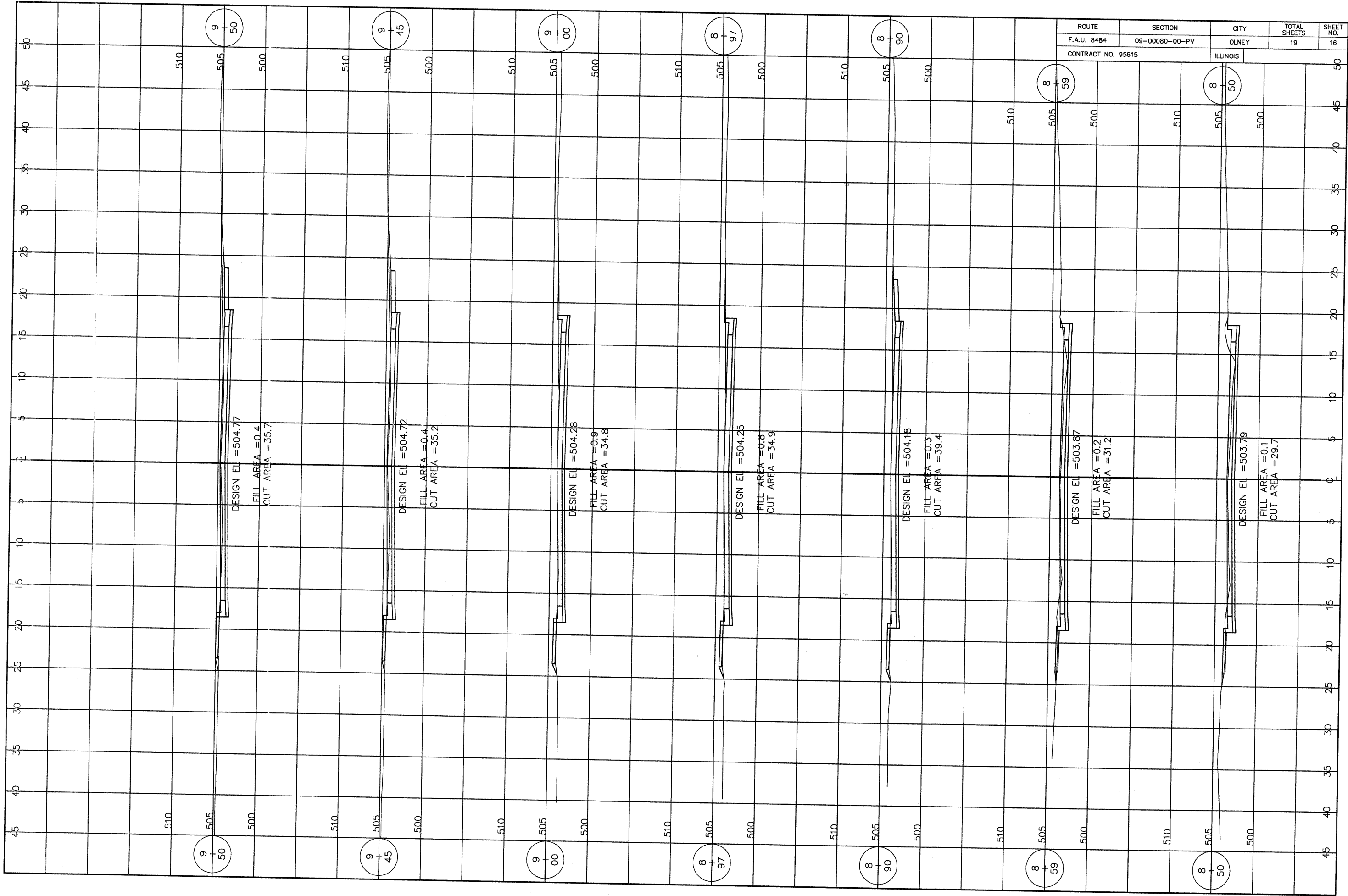
DESIGN EL = 502.57
FILL AREA = 1.4
CUT AREA = 25.7

DESIGN EL = 502.41
FILL AREA = 1.6
CUT AREA = 26.1

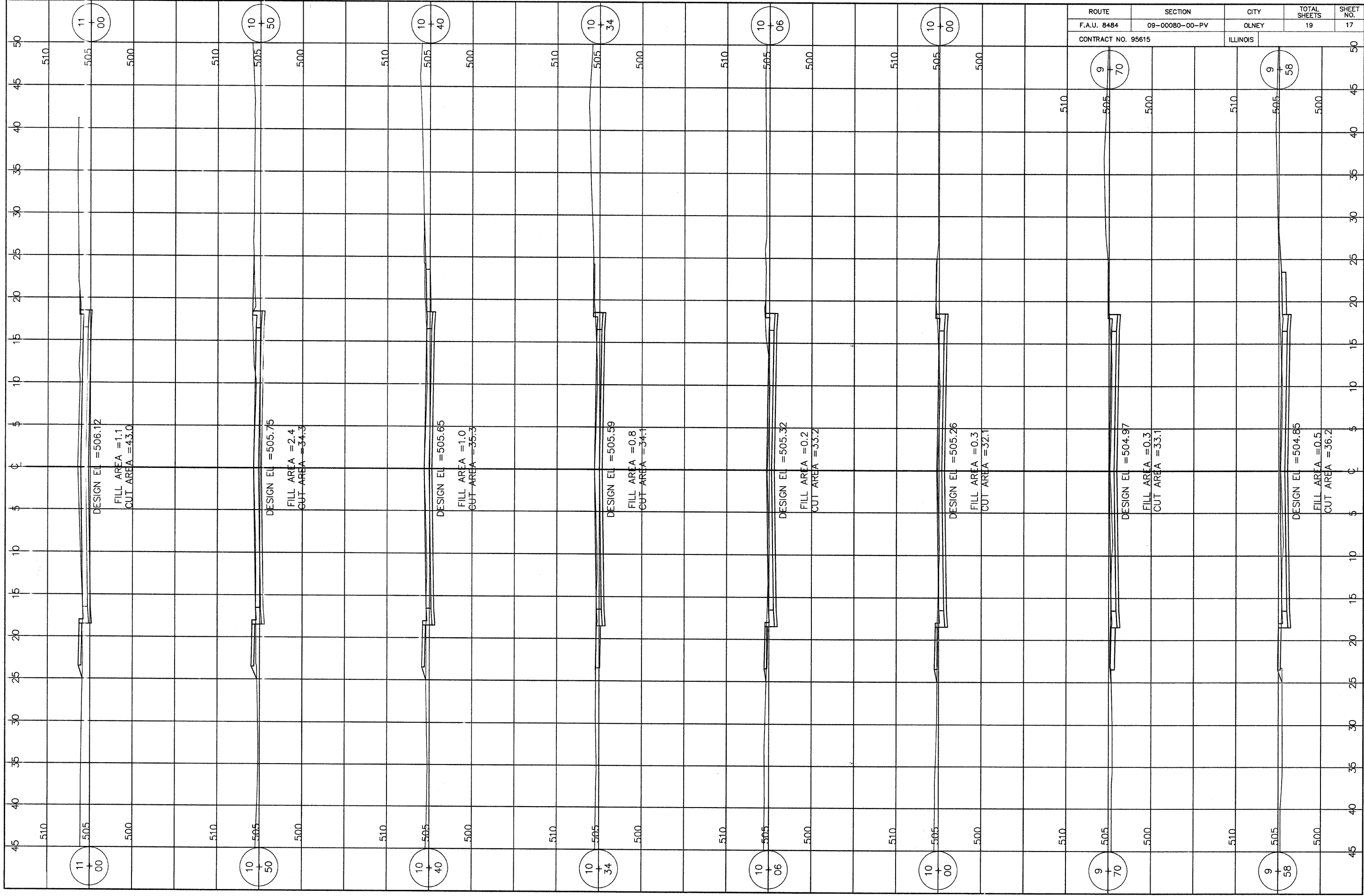
DESIGN EL = 501.18
FILL AREA = 0.0
CUT AREA = 33.7

DESIGN EL = 500.90
FILL AREA = 0.5
CUT AREA = 39.3

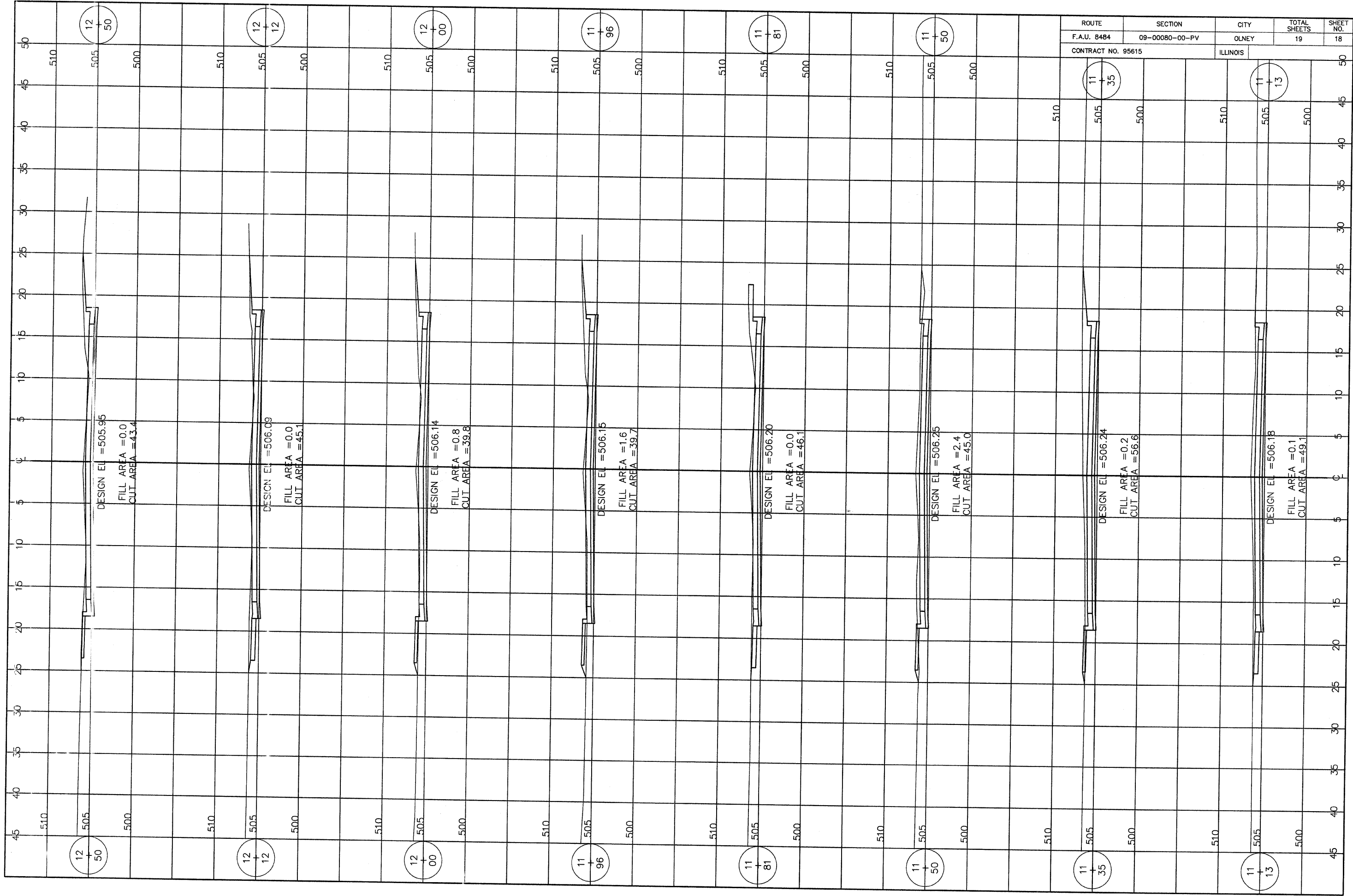
DESIGN EL = 500.61
FILL AREA = 0.2
CUT AREA = 36.8



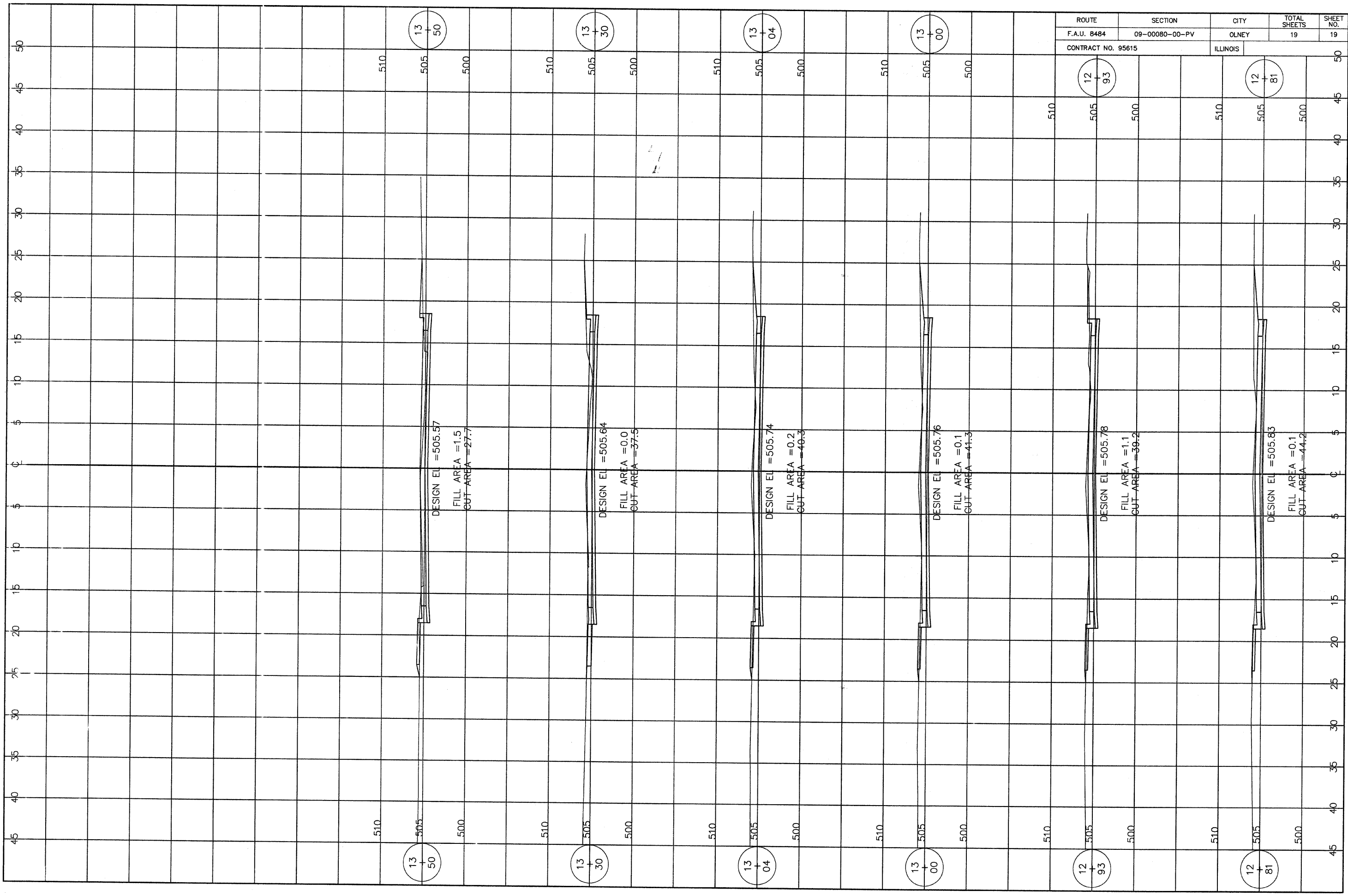
ROUTE	SECTION	CITY	TOTAL SHEETS	SHEET NO.
F.A.U. 8484	09-00080-00-PV	OLNEY	19	16
CONTRACT NO. 95615		ILLINOIS		



ROUTE	SECTION	CITY	TOTAL SHEETS	SHEET NO.
F.A.U. 8484	09-00080-00-PV	OLNEY	19	17
CONTRACT NO. 95615		ILLINOIS		



ROUTE	SECTION	CITY	TOTAL SHEETS	SHEET NO.
F.A.U. 8484	09-00080-00-PV	OLNEY	19	18
CONTRACT NO. 95615		ILLINOIS		



ROUTE	SECTION	CITY	TOTAL SHEETS	SHEET NO.
F.A.U. 8484	09-00080-00-PV	OLNEY	19	19
CONTRACT NO. 95615		ILLINOIS		

13
50

13
30

13
04

13
00

12
93

12
81

13
50

13
30

13
04

13
00

12
93

12
81