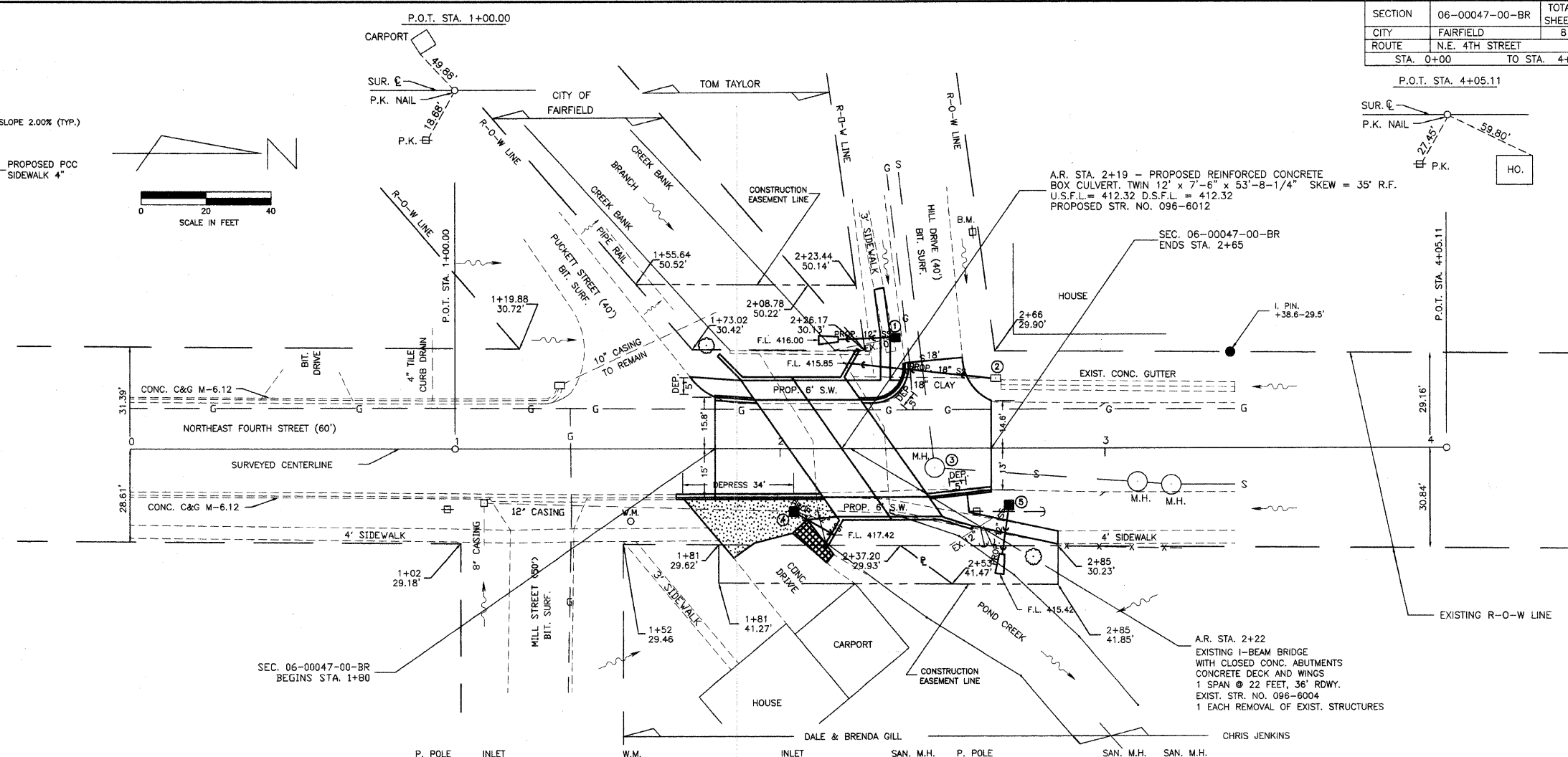
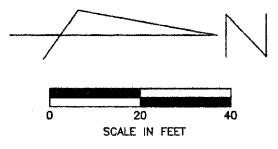
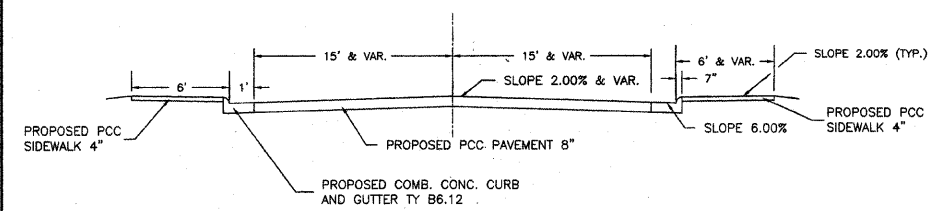


SECTION	06-00047-00-BR	TOTAL SHEETS	8	SHEET NO.	2
CITY	FAIRFIELD				
ROUTE	N.E. 4TH STREET				
STA.	0+00	TO STA.	4+05.11		



DRAINAGE STRUCTURES			
LOCATION	TYPE	GRATE	INVERT
① 34' LT. STA. 2+36	INLET TY. A, T 8 GR	419.40	416.09
② 34' LT. STA. 2+36	INLET TO BE REMOVED		
③ 22' LT. STA. 2+66	RECONST. INLET WITH SALV. F & G	418.48	416.33
④ 6' RT. STA. 2+48	EXIST. SAN. M.H. TO REMAN	420.71 (RIM)	
⑤ 19 RT. STA. 2+04	INLET TY. A, T 1 F & OL	420.90	417.50
⑥ 19 RT. STA. 2+04	INLET TO BE REMOVED		
⑦ 17 RT. STA. 2+70	INLET TY. A, T 8 GR	418.00	415.50

STORM SEWER TYPE I, RCCP	
SIZE	LENGTH
12" x 18"	17 FT.
18" x 18"	46 FT.
18" x 18"	13 FT.
18" x 18"	14 FT.
TOTALS	44 FT. 46 FT.

STORM SEWER REMOVAL		
SIZE	LENGTH	REMARKS
10" x 12"	6 FT.	
12" x 12"	19 FT.	
12" x 12"	19 FT.	
12" x 12"	42 FT.	
TOTAL	25 FT. 19 FT. 42 FT.	

* PRECAST CONCRETE FLARED END SECTION 12"	
SIZE	QUANTITY
33' LT. STA. 2+12	1 EACH
38' RT. STA. 2+67	1 EACH
TOTALS	2 EACH

CONTROLLED LOW STRENGTH MATERIAL	
ITEM	QUANTITY
① - 6" SOUTH	2 CU. YD.
② - WING	11 CU. YD.
③ - WING	3 CU. YD.
④ - WING	2 CU. YD.
⑤ - 9" EAST	2 CU. YD.
⑥ - EXIST. BRIDGE	11 CU. YD.
TOTALS	29 CU. YD.

UTILITIES	
TELEPHONE	VERIZON 225 E. CHESTNUT STREET BOX 460 OLNEY, IL 618-395-6189
ELECTRIC	CITY OF FAIRFIELD
GAS	105 N.E. 2ND STREET
SAN. SEWER	FAIRFIELD, IL 62837
WATER	618-842-7015

P.C.C. PAVEMENT 8"	
STA. 1+80.00 TO STA. 2+02.73	= 71 SQ. YD.
STA. 2+35.27 TO STA. 2+65.00	= 122 SQ. YD.
TOTAL	= 193 SQ. YD.

PAVEMENT REMOVAL	
STA. 1+80.00 TO STA. 2+10.00	= 91 SQ. YD.
STA. 2+33.00 TO STA. 2+65.00	= 130 SQ. YD.
TOTAL	= 221 SQ. YD.

PAVEMENT REMOVAL SPECIAL	
RT. STA. 2+10	= 7 SQ. YD.

TREE REMOVAL OVER 15 UNITS DIA.	
30.5' LT. STA. 1+76	= 29 UNITS DIA.
31.4' RT. STA. 2+77	= 32 UNITS DIA.
TOTAL	= 61 UNITS DIA.

COMBINATION CONC. CURB & GUTTER, TYPE B-6.12	
RT. STA. 1+68 TO STA. 2+13	= 45 FT.
LT. STA. 1+80 TO STA. 1+92	= 12 FT.
RT. STA. 2+46 TO STA. 2+65	= 19 FT.
LT. STA. 2+25 TO STA. 2+38	= 21 FT.
TOTAL	= 97 FT.

COMBINATION CONC. CURB & GUTTER REMOVAL	
RT. STA. 1+68 TO STA. 2+13	= 45 FT.

DETECTABLE WARNINGS	
LT. STA. 1+72	= 6 SQ. FT.
LT. STA. 2+37	= 6 SQ. FT.
RT. STA. 2+55	= 6 SQ. FT.
TOTALS	= 18 SQ. FT.

P.C.C. DRIVEWAY PAVEMENT 6"	
RT. STA. 1+85	= 51.0 SQ. YD.

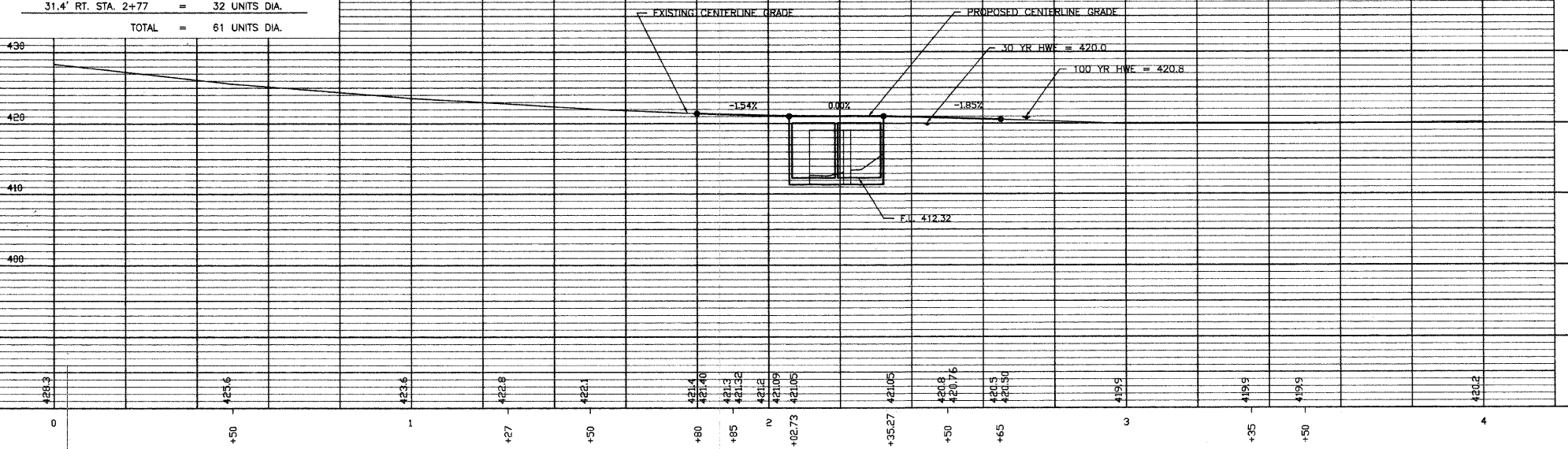
DRIVEWAY PAVEMENT REMOVAL	
RT. STA. 1+85	= 51.0 SQ. YD.

SEEDING, CLASS 1 (SPECIAL)	
STA. 1+80 TO STA. 2+65	= 0.05 ACRES

P.C.C. SIDEWALK 4"	
LT. STA. 1+72 TO CULVERT	= 77 SQ. FT.
LT. CULVERT TO STA. 2+37	= 66 SQ. FT.
LT. STA. 2+31 (3' SIDEWALK)	= 84 SQ. FT.
RT. CULVERT TO STA. 2+85	= 170 SQ. FT.
TOTAL	= 397 SQ. FT.

SIDEWALK REMOVAL	
RT. STA. 2+33 TO STA. 2+85	= 212 SQ. FT.
LT. STA. 2+33 (3' SIDEWALK)	= 60 SQ. FT.
TOTAL	= 272 SQ. FT.

P.C.C. SIDEWALK SPECIAL	
LT. & RT. ON CULVERT	= 390 SQ. FT.



CONNOR & CONNOR, Inc.
 CONSULTING ENGINEERS
 209 North Cross Street
 ROBINSON, ILLINOIS 62454
 Phone 618-544-8663
 Fax 618-544-3042
 Licensed Surveyors

DATE _____
 SCALE 1" = 50'
 DRAWN BY _____
 PROJECT _____
 SHEET 02 OF 08