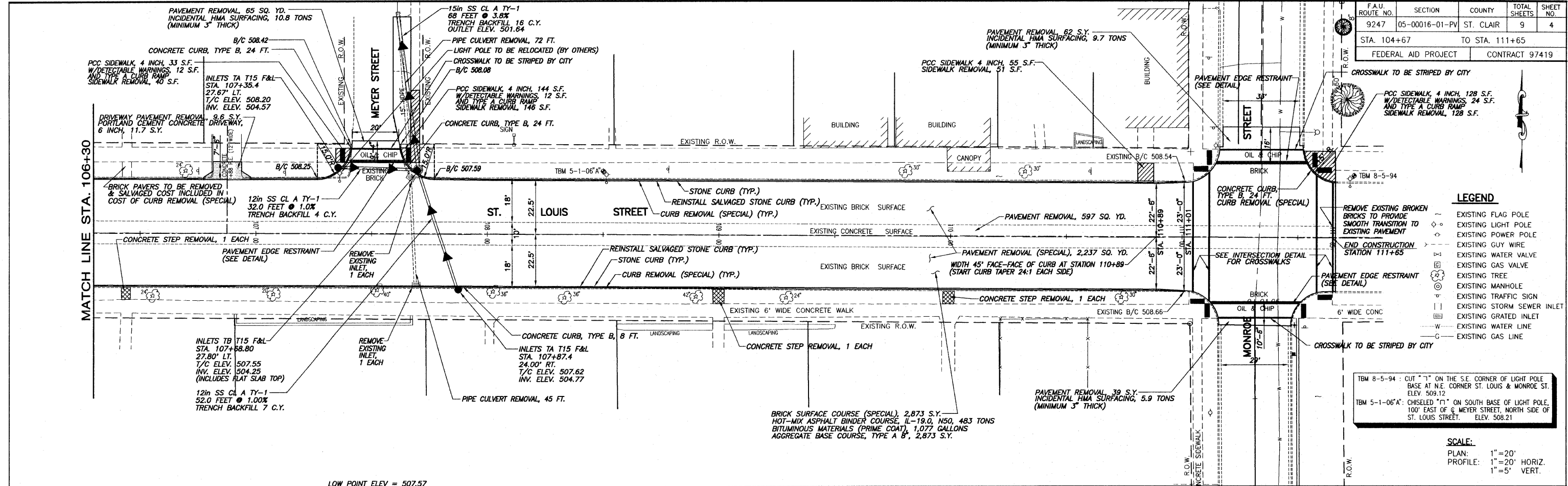


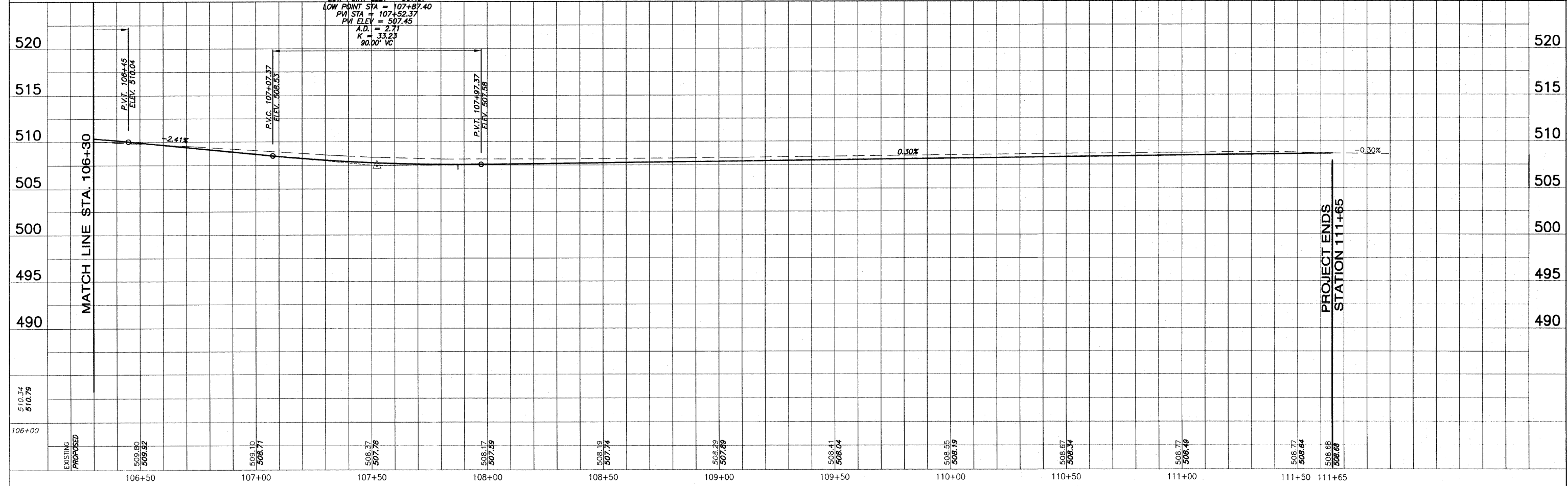
F.A.U. ROUTE NO.	SECTION	COUNTY	TOTAL SHEETS	SHEET NO.
9247	05-00016-01-PV	ST. CLAIR	9	4
STA. 104+67		TO STA. 111+65		
FEDERAL AID PROJECT		CONTRACT 97419		



- LEGEND**
- EXISTING FLAG POLE
  - EXISTING LIGHT POLE
  - EXISTING POWER POLE
  - EXISTING GUY WIRE
  - EXISTING WATER VALVE
  - EXISTING GAS VALVE
  - EXISTING TREE
  - EXISTING MANHOLE
  - EXISTING TRAFFIC SIGN
  - EXISTING STORM SEWER INLET
  - EXISTING GRATED INLET
  - EXISTING WATER LINE
  - EXISTING GAS LINE

TBM 8-5-94 : CUT "T" ON THE S.E. CORNER OF LIGHT POLE BASE AT N.E. CORNER ST. LOUIS & MONROE ST. ELEV. 509.12  
 TBM 5-1-06'A : CHISELED "T" ON SOUTH BASE OF LIGHT POLE, 100' EAST OF @ MEYER STREET, NORTH SIDE OF ST. LOUIS STREET. ELEV. 508.21

**SCALE:**  
 PLAN: 1" = 20'  
 PROFILE: 1" = 20' HORIZ.  
 1" = 5' VERT.



**PLAN AND PROFILE ST. LOUIS STREET**  
**SEC. 05-00016-01-PV ST. CLAIR COUNTY**