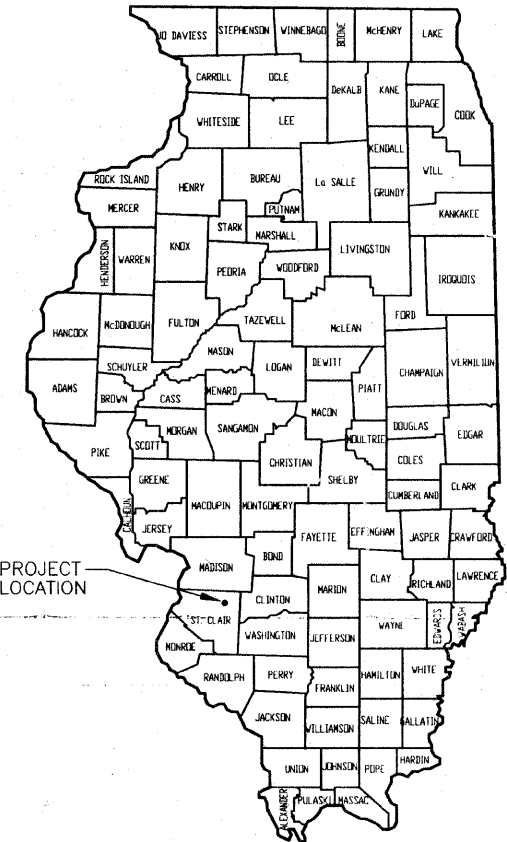


STATE OF ILLINOIS  
DEPARTMENT OF TRANSPORTATION  
DIVISION OF HIGHWAYS

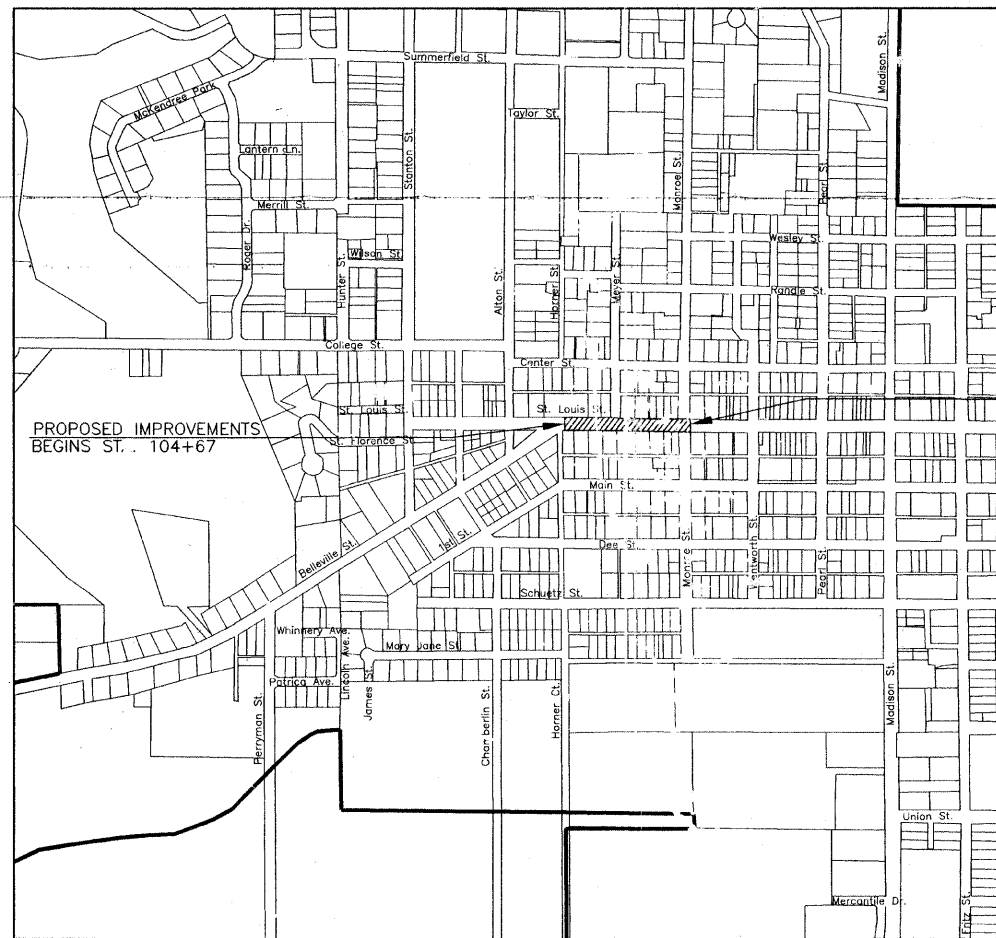
F.A.U. ROUTE NO.	SECTION	COUNTY	TOTAL SHEETS	SHEET NO.
9247	05-00016-01-PV	ST. CLAIR	9	1
STA. 104+67		TO STA. 111+65		
FEDERAL AID PROJECT		CONTRACT 97419		

PLANS FOR PROPOSED  
FEDERAL AID PROJECT  
FAU 9247 (ST. LOUIS STREET IMPROVEMENTS)  
SECTION 05-00016-01-PV  
PROJECT NO. M-5011(301)  
CITY OF LEBANON, ILLINOIS  
ST. CLAIR COUNTY  
JOB NO. C-98-316-10

VICINITY MAP



LOCATION MAP



PROPOSED IMPROVEMENTS  
ENDS STA. 111+65

LOCATION MAP  
1" = 500 FT.

NET LENGTH OF IMPROVEMENT  
698 FEET = 0.13 MILES  
2007 ADT = 5628

AREAS TO BE IMPROVED

**RHUTASEL and ASSOCIATES, INC.**

ENGINEERS • SURVEYORS

CORPORATE OFFICE  
4 INDUSTRIAL DRIVE  
FREEBURG, ILLINOIS 62243  
(618) 539-3178

REGIONAL OFFICE  
201 SOUTH LOCUST STREET  
CENTRALIA, ILLINOIS 62801  
(618) 532-1932

IL. LICENSE NO. 184-000287

INDEX OF SHEETS

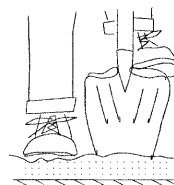
1. COVER SHEET
2. TYPICAL SECTIONS/  
GENERAL NOTES/SCHEDULE OF QUANTITIES
- 3-4. PLAN AND PROFILE
5. TRAFFIC CONTROL PLAN
6. MISCELLANEOUS DETAILS
7. INTERSECTION DETAIL
- 8-9. CROSS SECTIONS

APPLICABLE IDOT HIGHWAY STANDARDS

000001-05	606001-04
424001-05	701501-05
602301-02	701801-04
602306-02	701901-01
602601-02	B.L.R. 21-8
604066-02	

**HOLD IT ! CALL BEFORE YOU DIG !**

Phone J.U.L.I.E.



The owner would like to remind you that underground utility facilities can be damaged by shovel blades or other digging equipment. You can prevent damage or possible personal danger by phoning 800/892-0123 at least 48 hours before you dig. That's the toll-free number for "J.U.L.I.E.", which stands for Joint Utilities Location Information for Excavators.

If there are any pipes, cables, lines or mains in the excavation area, utility personnel will be out to mark the facilities so you can work around them.

Toll Free 800/892-0123



*Sidney W. LeGrand*  
Sidney W. LeGrand  
Date of Signing 12/29/09  
Date of License Expiration 11/30/11

ILLINOIS DEPARTMENT OF TRANSPORTATION	
APPROVED	<i>Dec 29 2009</i> DATE
	<i>John Aher</i> MAYOR, CITY OF LEBANON
PASSED	<i>January 4, 2010</i> DATE
	<i>Forest</i> DISTRICT EIGHT ENGINEER OF LOCAL ROADS & STREETS
RELEASING FOR BID BASED ON LIMITED REVIEW	<i>January 4, 2010</i> DATE
	<i>Mary C. Lemieux</i> DEPUTY DIRECTOR OF HIGHWAYS, REGION FIVE ENGINEER

F.A.U. ROUTE NO.	SECTION	COUNTY	TOTAL SHEETS	SHEET NO.
9247	05-00016-01-PV	ST. CLAIR	9	2
STA. 104+67		TO STA. 111+65		
FEDERAL AID PROJECT		CONTRACT 97419		

**SUMMARY OF QUANTITIES**

CODE NO.	ITEM	UNIT	QUANTITY
20200100	EARTH EXCAVATION	CU. YD.	1182
20800150	TRENCH BACKFILL	CU. YD.	27
25000100	SEEDING, CLASS 1	ACRE	0.5
35100700	AGGREGATE BASE COURSE, TYPE A 8"	SQ. YD.	3691
40600100	BITUMINOUS MATERIALS (PRIME COAT)	GALLON	1384
40603080	HOT-MIX ASPHALT BINDER COURSE, IL-19.0, N50	TON	620
40800050	INCIDENTAL HOT-MIX ASPHALT SURFACING	TON	33
42300200	PORTLAND CEMENT CONCRETE DRIVEWAY PAVEMENT, 6 INCH	SQ. YD.	22
42400100	PORTLAND CEMENT CONCRETE SIDEWALK 4 INCH	SQ. FT.	370
42400800	DETECTABLE WARNINGS	SQ. FT.	48
44000100	PAVEMENT REMOVAL	SQ. YD.	940
44000200	DRIVEWAY PAVEMENT REMOVAL	SQ. YD.	18
44000600	SIDEWALK REMOVAL	SQ. FT.	372
44002400	CURB REMOVAL (SPECIAL)	FOOT	1277
44004400	PAVEMENT REMOVAL (SPECIAL)	SQ. YD.	2891
50105220	PIPE CULVERT REMOVAL	FOOT	117
550A0050	STORM SEWERS, CLASS A, TYPE 1 12"	FOOT	84
550A0070	STORM SEWERS, CLASS A, TYPE 1 15"	FOOT	68
60237000	INLETS, TYPE A, TYPE 15 FRAME AND LID	EACH	2
60240320	INLETS, TYPE B, TYPE 15 FRAME AND LID	EACH	1
60500060	REMOVING INLETS	EACH	2
60600605	CONCRETE CURB, TYPE B	FOOT	80
67100100	MOBILIZATION	L SUM	1
70101700	TRAFFIC CONTROL AND PROTECTION	L SUM	1
X0300351	CONCRETE STEP REMOVAL	EACH	5
X0322983	STONE CURB	FOOT	58
XX005803	BRICK SURFACE COURSE	SQ. YD.	3691
XX008303	REINSTALL SALVAGED STONE CURB	FOOT	588
XX007413	CONCRETE EDGE RESTRAINT	FOOT	104

**GENERAL NOTES**

EXISTING UTILITIES SHOWN ARE LOCATED FROM SURFACE OBSERVATIONS OR INFORMATION PROVIDED BY THE RESPECTIVE UTILITIES AND MUST BE CONSIDERED APPROXIMATE. THERE MAY BE OTHERS, THE EXACT LOCATION OF WHICH ARE UNKNOWN AND NOT SHOWN. THE CONTRACTOR WILL BE RESPONSIBLE FOR NOTIFYING THE RESPECTIVE UTILITIES BEFORE WORK IS BEGUN. FIELD MARKINGS OF UNDERGROUND UTILITIES MAY BE OBTAINED BY PROVIDING A MINIMUM OF 48 HOURS ADVANCE NOTICE THROUGH THE J.U.L.I.E. SYSTEM BY CALLING 1-800-892-0123 OR BY DIRECT CONTACT WITH NON-MEMBERS OF J.U.L.I.E.

THE COST FOR FURNISHED EXCAVATION NECESSARY TO COMPLETE GRADING UP TO THE EXISTING SIDEWALK AS SHOWN ON THE PLANS AND AS DIRECTED BY THE ENGINEER SHALL BE INCLUDED IN THE COST OF THE CONTRACT. THE TOP 6 INCHES OF ALL NECESSARY BACKFILL SHALL BE FREE FROM ALL ROCKS AND FOREIGN DEBRIS.

FACTORS USED FOR QUANTITY CALCULATIONS ARE AS FOLLOWS:  
 ALL HOT-MIX ASPHALT — 112 LBS./SQ. YD./INCH  
 BITUMINOUS MATERIALS (PRIME COAT) — 0.375 GALLONS/SQ. YD.  
 SEEDING:  
 NITROGEN FERTILIZER NUTRIENT — 90 LBS/ACRE  
 PHOSPHORUS FERTILIZER NUTRIENT — 90 LBS/ACRE  
 POTASSIUM FERTILIZER NUTRIENT — 90 LBS/ACRE  
 MULCH — 2 TONS/ACRE

ALL RADII CALLED OUT ON THE PLANS ARE TO THE BACK OF CURB.  
 PAVEMENT REMOVAL CALLED OUT ON THE PLANS CONSISTS OF VARYING MATERIAL OF VARYING DEPTHS. THE CONTRACTOR SHALL REMOVE THE PAVEMENT AS NECESSARY TO CONSTRUCT THE PROPOSED IMPROVEMENTS AND NO ADDITIONAL COMPENSATION WILL BE ALLOWED.

**LIST OF UTILITIES**

**ELECTRIC & GAS**  
 AMEREN IP  
 1050 WEST BOULEVARD  
 P.O. BOX 428  
 BELLEVILLE, ILLINOIS  
 62221  
 (618) 236-6271  
 1-800-755-5000

**TELEPHONE**  
 AT&T  
 203 GOETHE ST.  
 COLLINSVILLE, ILLINOIS  
 62234  
 1-800-244-4444

**WATER & SEWER**  
 CITY OF LEBANON  
 312 W. ST. LOUIS ST.  
 LEBANON, ILLINOIS 62254  
 (618) 537-4976

**CABLE**  
 CHARTER COMMUNICATIONS  
 7645 MAGNA DR.  
 BELLEVILLE, ILLINOIS 62221  
 (618) 236-9619

**SCHEDULE OF QUANTITIES**

**CONCRETE CURB TYPE B**

LOCATION	QUANTITY
LT. STA. 107+26 NORTH AROUND RADIUS TO STA. 107+41	24
LT. STA. 107+64 SOUTH AROUND RADIUS TO STA. 107+70	24
LT. STA. 111+52 EAST AROUND RADIUS TO STA. 111+65	24
RT. STA. 107+83 ABUTTING INLET TO STA. 107+91	8
<b>PAY ITEM TOTAL</b>	<b>80</b>

**STONE CURB & REINSTALL SALVAGED STONE CURB**

LOCATION	QUANTITY STONE CURB	QUANTITY REINSTALL SALVAGED STONE CURB
LT. STA. 104+67 EAST TO STA. 106+02	68	67
LT. STA. 106+21 EAST TO STA. 106+77	28	28
LT. STA. 106+98 EAST TO STA. 107+26	14	14
LT. STA. 107+70 EAST TO STA. 111+01	165	166
RT. STA. 104+67 EAST TO STA. 107+83	158	158
RT. STA. 107+91 EAST TO STA. 111+01	155	155
<b>PAY ITEM TOTAL</b>	<b>588</b>	<b>588</b>

**CURB REMOVAL (SPECIAL)**

LOCATION	QUANTITY
LT. STA. 104+67 TO STA. 107+41	279
LT. STA. 107+64 TO STA. 111+01	340
LT. STA. 111+52 TO STA. 111+65	24
RT. STA. 104+67 TO STA. 111+01	634
<b>PAY ITEM TOTAL</b>	<b>1,277</b>

**PAVEMENT DESIGN**

STRUCTURAL DESIGN TRAFFIC (S.D.T.) YEAR 2017 P.V. 7653  
 S.U. 5  
 M.U. 1

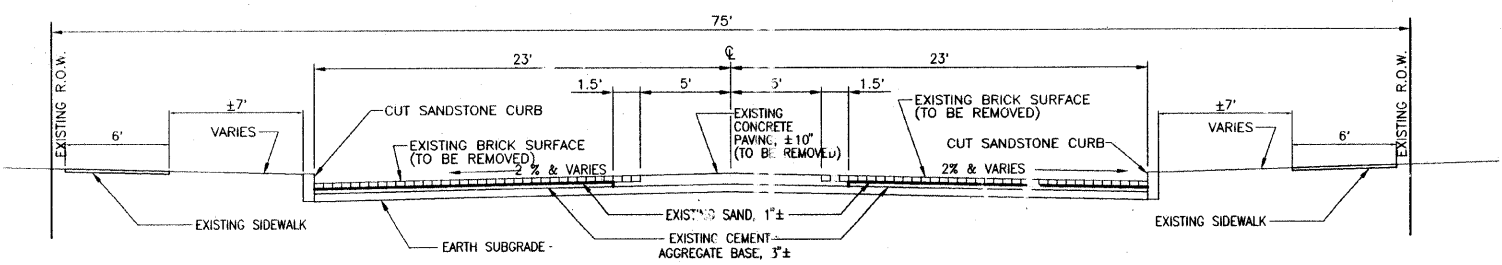
CLASS II ROAD  
 MINIMUM SOIL SUPPORT: IBR= 3  
 T.F.=0.0187 D1=2.23

**PAVEMENT STRUCTURE MATERIALS**

SURFACE TYPE: 2 1/4" VITRIFIED CLAY BRICK PAVER  
 BINDER COURSE: HOT-MIX ASPHALT BINDER COURSE, IL-19.0, N50: a<sub>1</sub>=0.4  
 BASE COURSE: AGGREGATE BASE COURSE TYPE A: a<sub>2</sub>=0.13

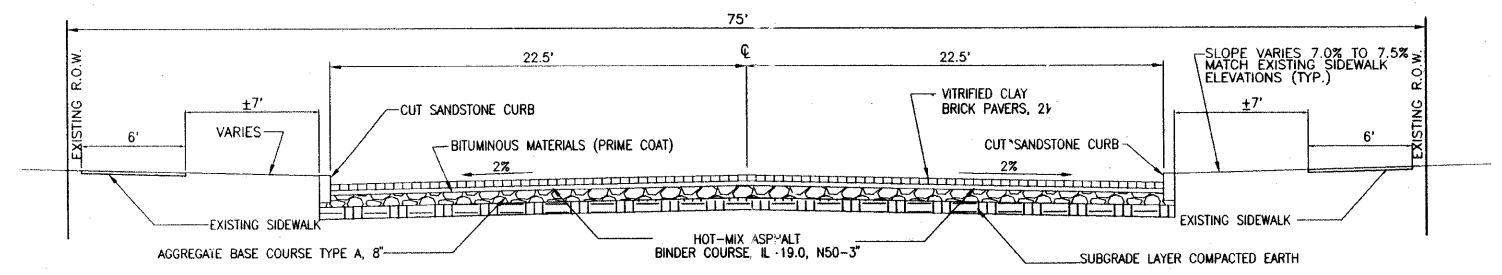
THE FOLLOWING MIXTURE REQUIREMENTS ARE APPLICABLE FOR THIS PROJECT:

MIXTURE USE(S)	BINDER COURSE	INCIDENTAL
AC/PG	PG 64-22	PG 64-22
RAP % (MAX.)	15%	10%
DESIGN AIR VOIDS	4.0% @ Ndes=50	4.0% @ Ndes=50
MIX COMPOSITION (GRADATION MIX)	IL-19.0	
FRICTION AGG	MIXTURE D	MIXTURE D



**EXISTING TYPICAL SECTION**

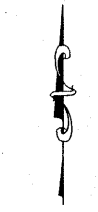
N.T.S.  
 STA. 104+67 TO 111+65



**PROPOSED TYPICAL SECTION**

N.T.S.  
 STA. 104+67 TO 111+65

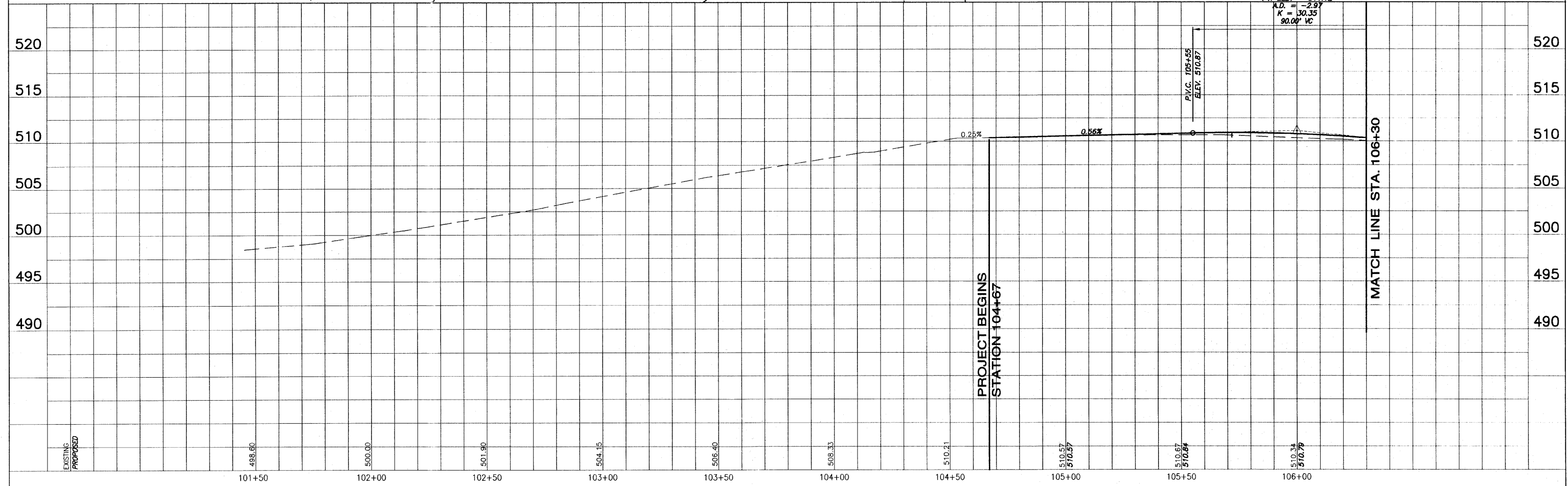
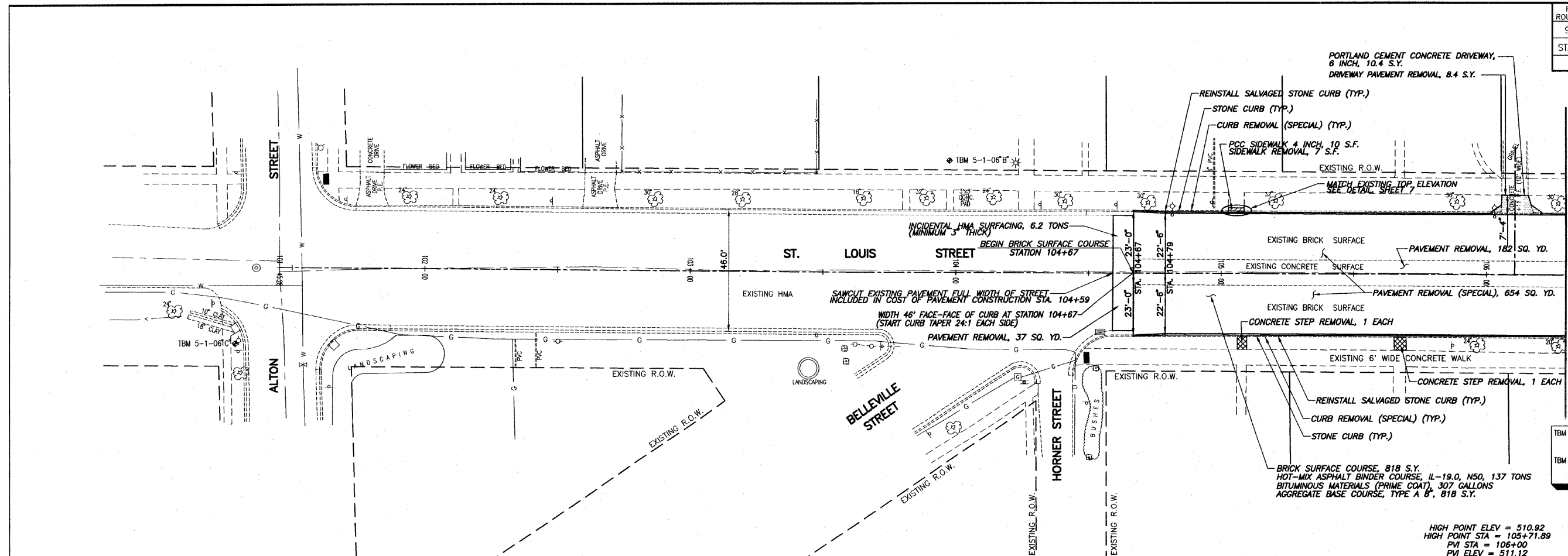
F.A.U. ROUTE NO.	SECTION	COUNTY	TOTAL SHEETS	SHEET NO.
9247	05-00016-01-PV	ST. CLAIR	9	3
STA. 104+67		TO STA. 111+65		
FEDERAL AID PROJECT		CONTRACT 97419		



- LEGEND**
- - - EXISTING FLAG POLE
  - EXISTING LIGHT POLE
  - EXISTING POWER POLE
  - EXISTING GUY WIRE
  - ⊗ EXISTING WATER VALVE
  - ⊗ EXISTING GAS VALVE
  - ⊗ EXISTING TREE
  - ⊗ EXISTING MANHOLE
  - ⊗ EXISTING TRAFFIC SIGN
  - ⊗ EXISTING STORM SEWER INLET
  - ⊗ EXISTING GRATED INLET
  - W- EXISTING WATER LINE
  - G- EXISTING GAS LINE

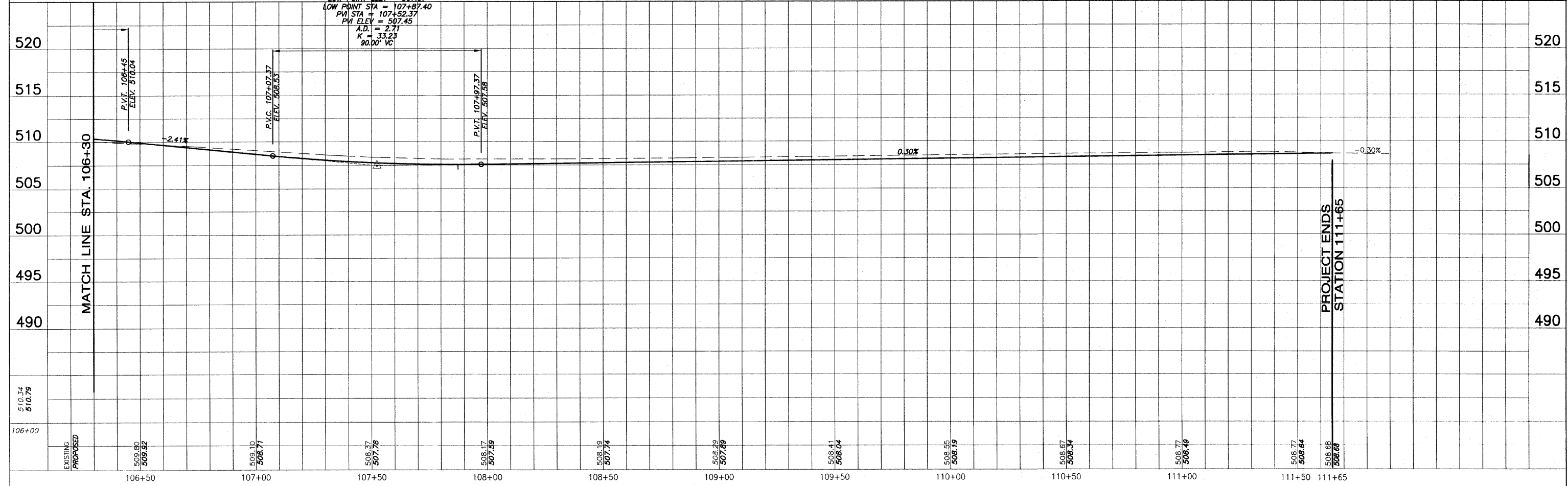
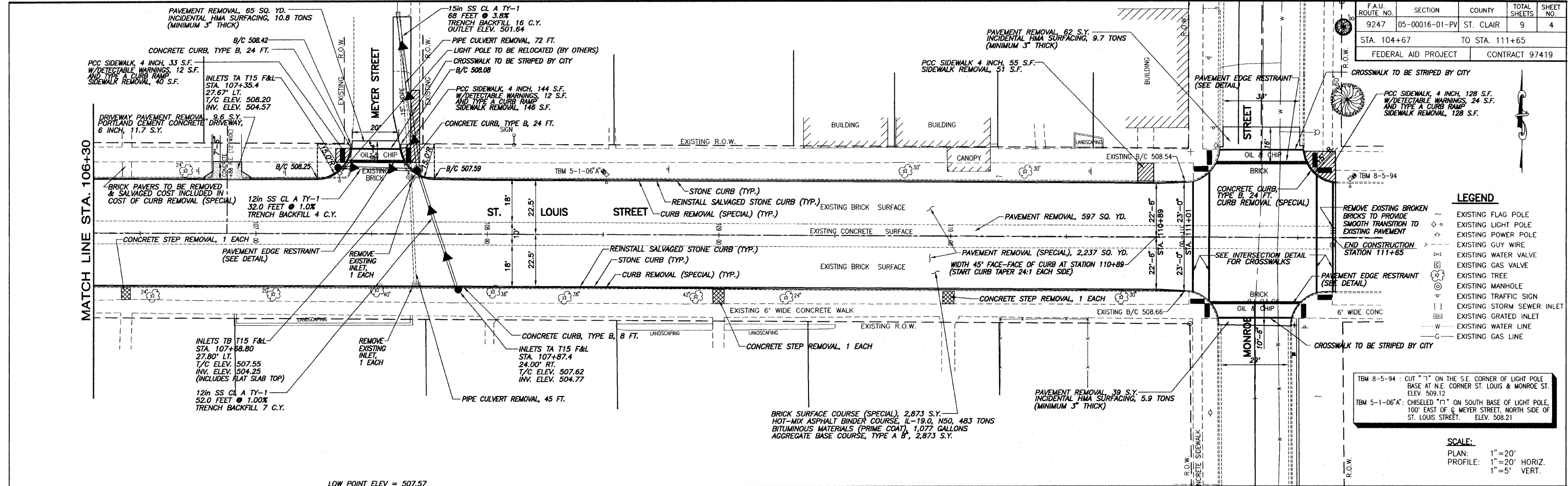
TBM 5-1-06" B: CHISELED "X" ON NORTHEAST BOLT OF BASE OF LIGHT STANDARD; LOCATED IN FRONT OF METHODIST CHURCH. ELEV. 509.23  
 TBM 5-1-06" C: RAILROAD SPIKE IN EAST FACE OF POWER POLE, LOCATED AT SOUTHWEST CORNER OF ALTON ST. AND ST. LOUIS STREET. ELEV. 499.40

**SCALE:**  
 PLAN: 1" = 20'  
 PROFILE: 1" = 20' HORIZ.  
 1" = 5' VERT.



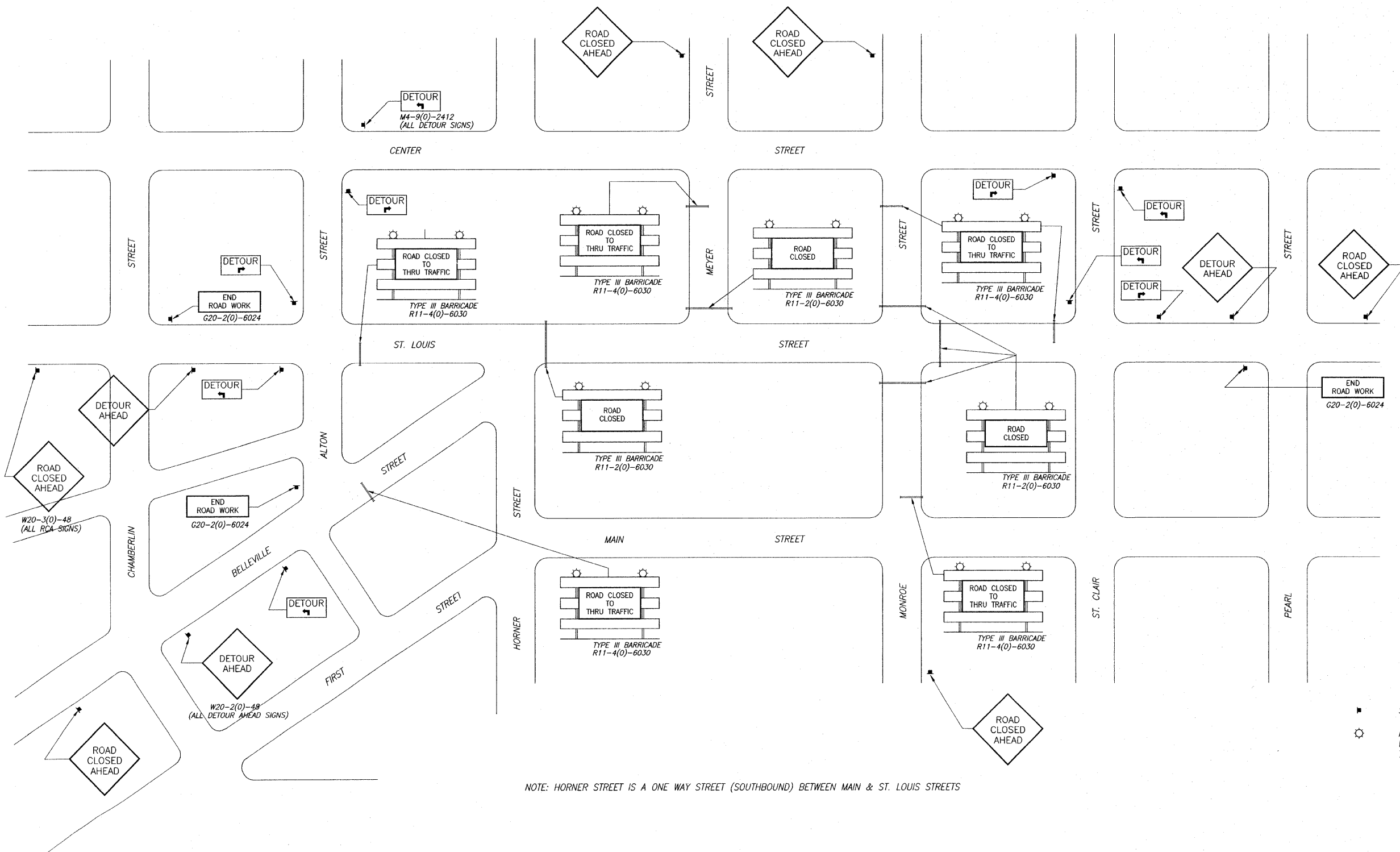
**PLAN AND PROFILE ST. LOUIS STREET**  
**SEC. 05-00016-01-PV ST. CLAIR COUNTY**

F.A.U. ROUTE NO.	SECTION	COUNTY	TOTAL SHEETS	SHEET NO.
9247	05-00016-01-PV	ST. CLAIR	9	4
STA. 104+67		TO STA. 111+65		
FEDERAL AID PROJECT		CONTRACT 97419		



PLAN AND PROFILE ST. LOUIS STREET  
SEC. 05-00016-01-PV ST. CLAIR COUNTY

F.A.U. ROUTE NO.	SECTION	COUNTY	TOTAL SHEETS	SHEET NO.
9247	05-00016-01-PV	ST. CLAIR	9	5
STA. 104+67		TO STA. 111+65		
FEDERAL AID PROJECT			CONTRACT 97419	

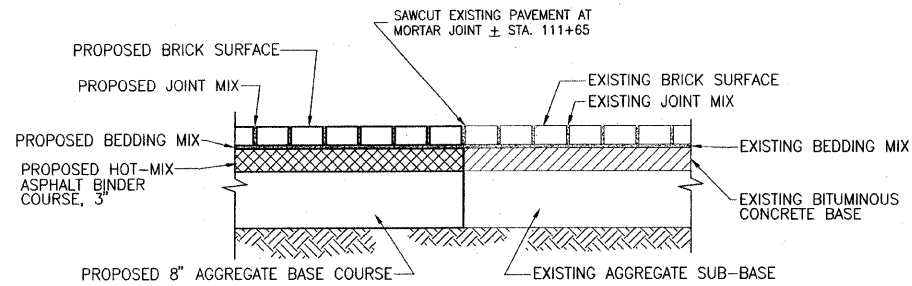


**SYMBOLS**

- SIGN ON PORTABLE OR PERMANENT SUPPORT
- ⚙ FLASHING LIGHTS SHALL BE PLACED IN CONFORMANCE WITH STANDARD BLR-21 AND AS DIRECTED BY THE ENGINEER TO ACCOMMODATE FIELD CONDITIONS.

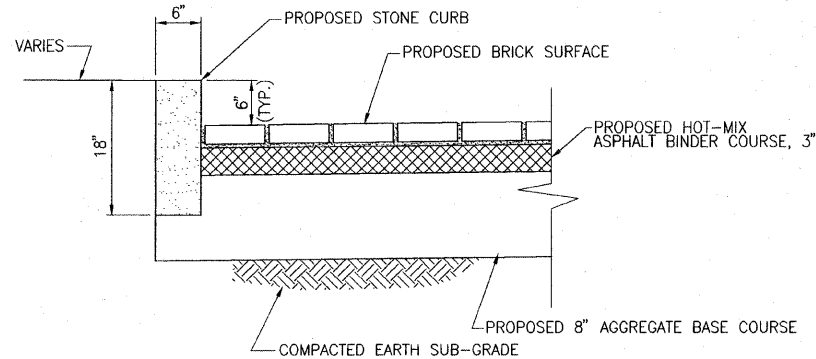
**TRAFFIC CONTROL PLAN AND DETOUR ROUTE**  
N.T.S.

F.A.U. ROUTE NO.	SECTION	COUNTY	TOTAL SHEETS	SHEET NO.
9247	05-00016-01-PV	ST. CLAIR	9	6
STA. 104+67		TO STA. 111+65		
FEDERAL AID PROJECT		CONTRACT 97419		



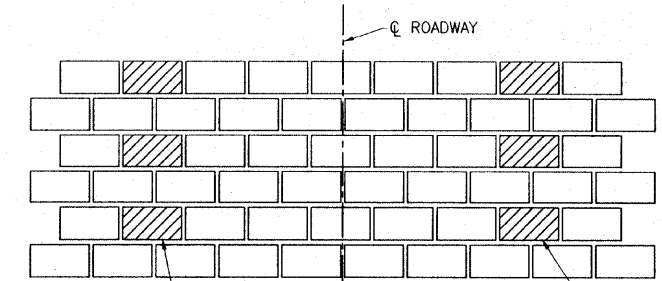
**PAVEMENT TRANSITION DETAIL**

STA. 111+65  
SCALE: 1"=1'



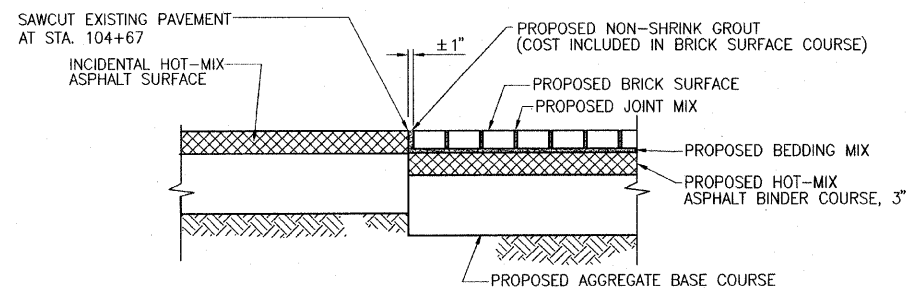
**CURB DETAIL**

SCALE: 1"=1'



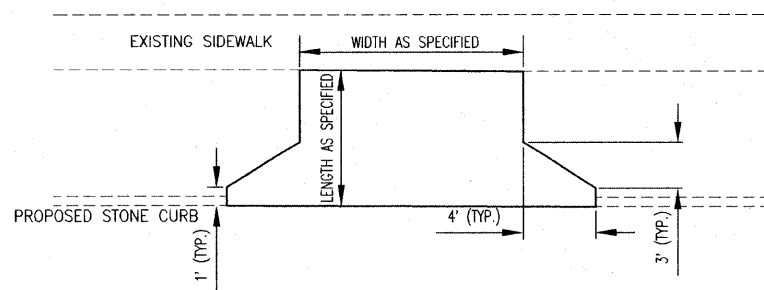
**STREET CAR TRACK DETAIL**

SCALE: 1"=1'



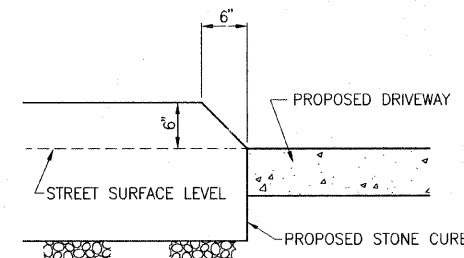
**PAVEMENT TRANSITION DETAIL**

STA. 104+67  
SCALE: 1"=1'



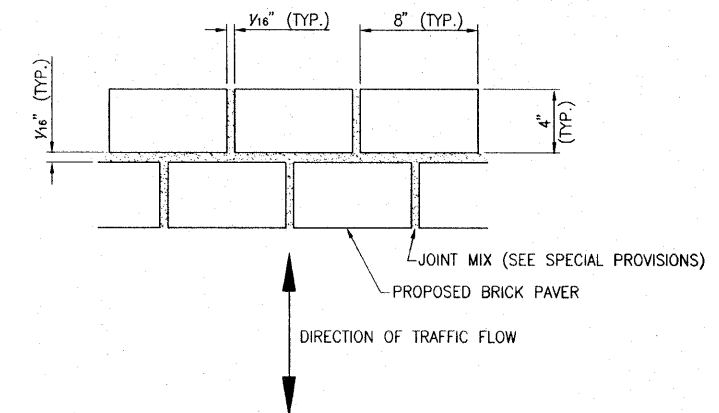
**DRIVEWAY DETAIL**

NOT TO SCALE



**CURB CUT AT DRIVEWAYS**

SCALE: 1"=1'



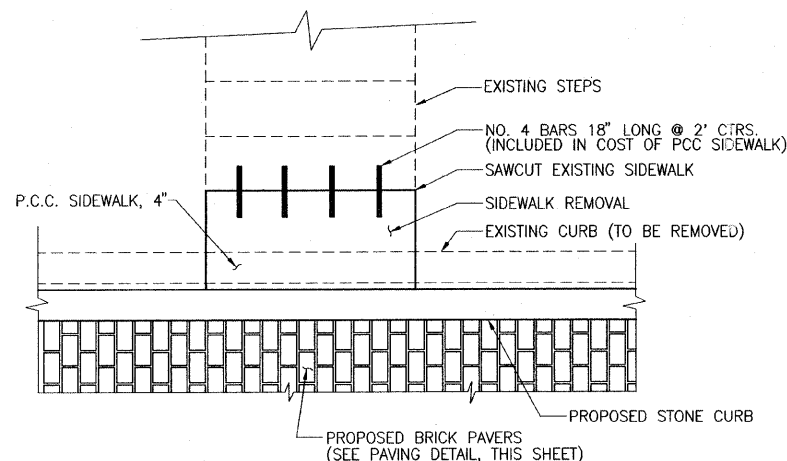
NOTES:

BRICK SHALL BE LAID IN A RUNNING BOND PATTERN PERPENDICULAR TO DIRECTION OF TRAFFIC FLOW IN ALL AREAS OUTSIDE OF STREET INTERSECTIONS. SEE INTERSECTION DETAIL FOR BRICK LAYOUT WITHIN INTERSECTIONS.

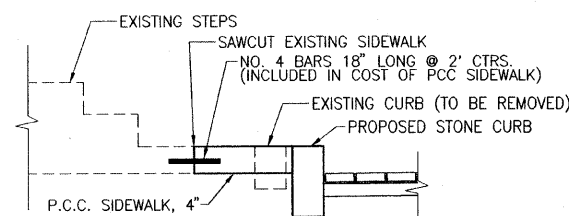
TWO (2) COLORS OF BRICK SHALL BE UTILIZED. ONE FOR GENERAL STREET AREAS AND ANOTHER TO DELINEATE THE CROSSWALKS AND ABANDONED STREET CAR TRACK. COLOR OF BRICK TO BE UTILIZED SHALL BE SELECTED BY CITY OF LEBANON.

**PAVING DETAIL**

N.T.S.



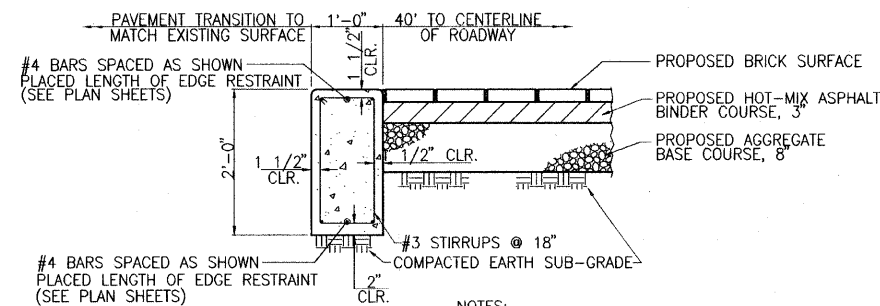
**PLAN**



**SECTIONAL VIEW**

**SIDEWALK TIE-IN DETAIL**

N.T.S.



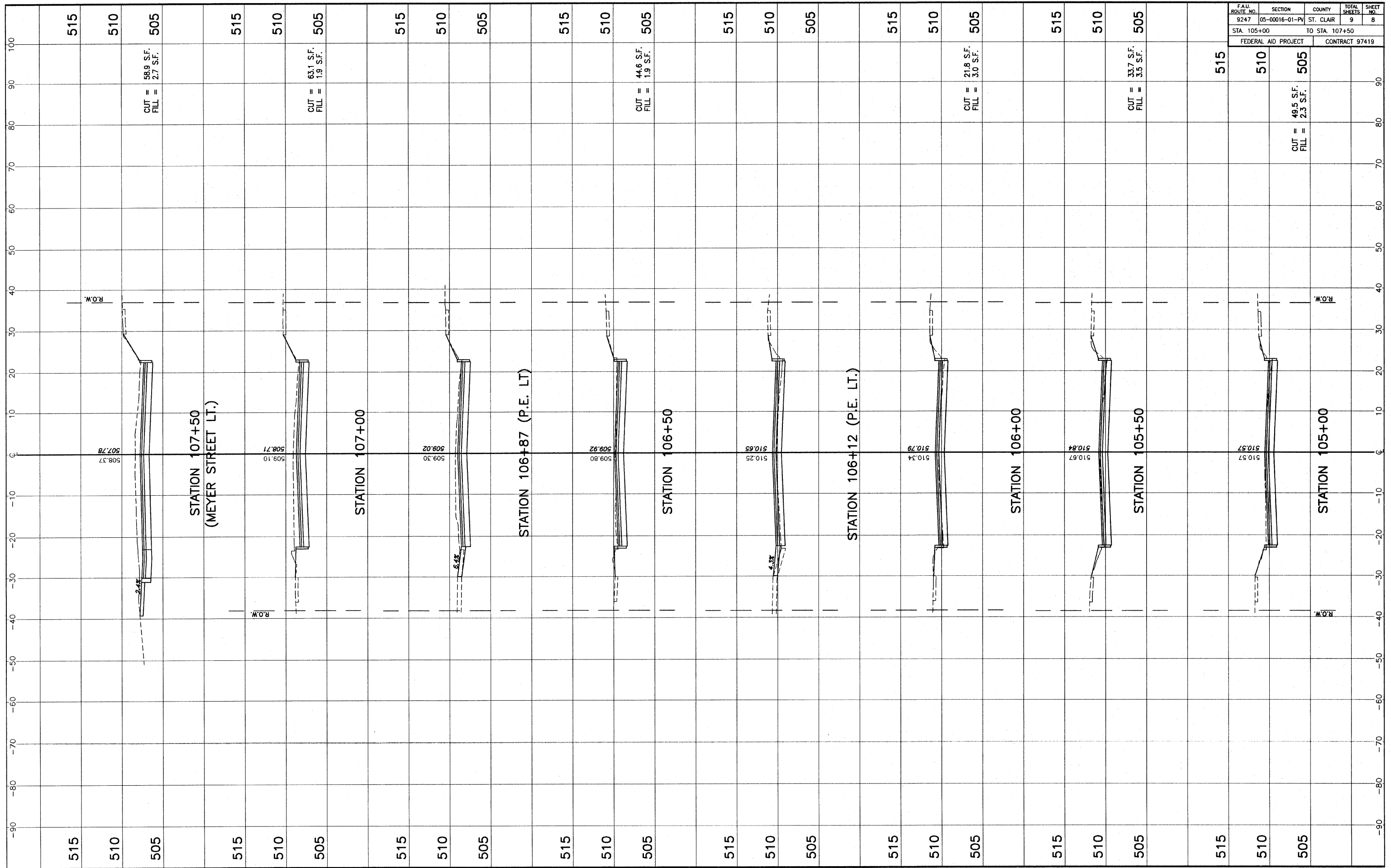
NOTES:

1. PROVIDE PREFORMED EXPANSION JOINT FILLER AT EACH END OF PAVEMENT EDGE RESTRAINT BETWEEN RESTRAINT AND CURB.
2. HAND TOOL TOP EDGES OF PAVEMENT EDGE RESTRAINTS AND PROVIDE BROOM FINISH.
3. THE COST FOR ALL BARS SHALL BE INCLUDED IN THE COST FOR THE PAVEMENT EDGE RESTRAINT.

**PAVEMENT EDGE RESTRAINT DETAIL**

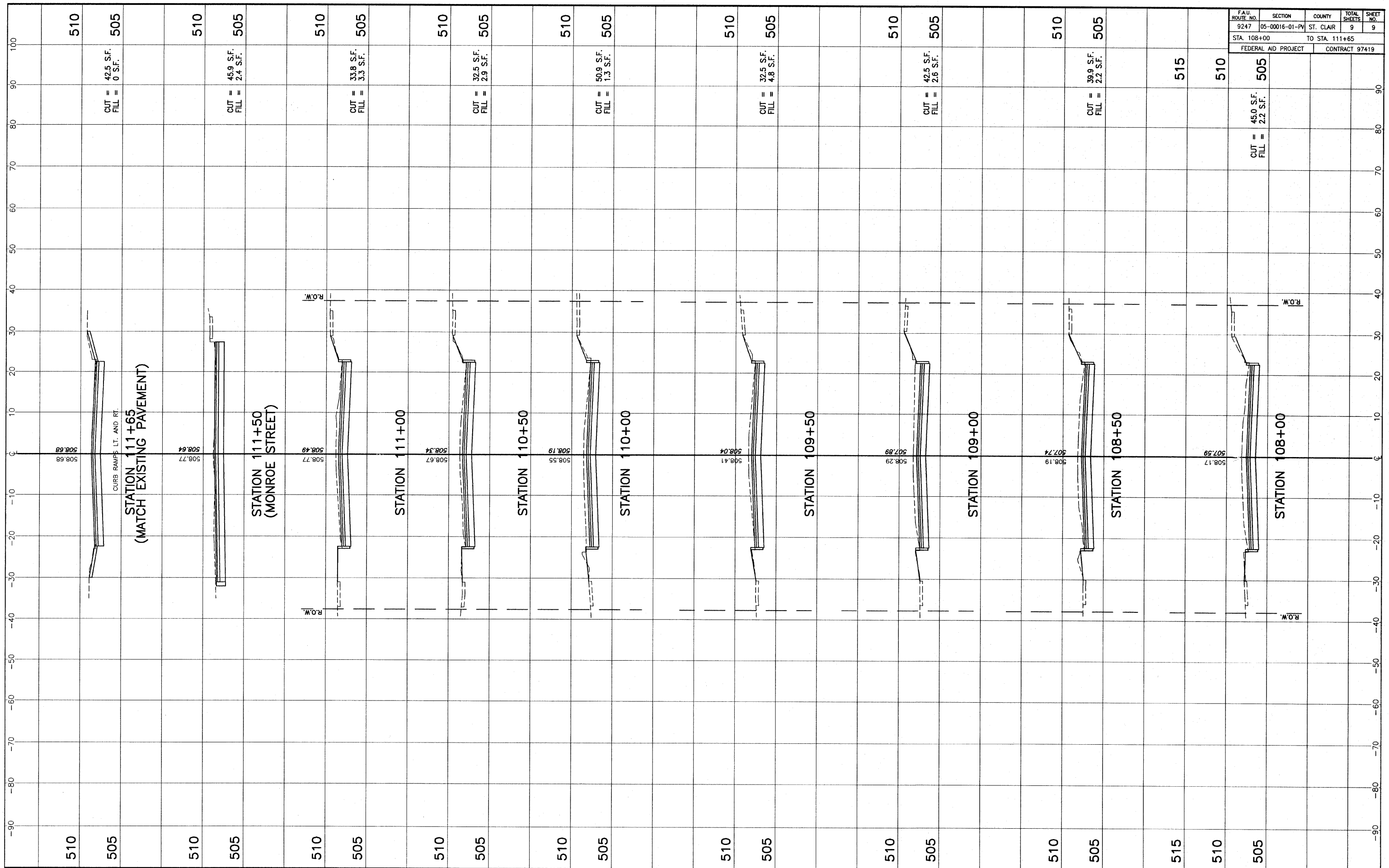
SCALE: 1"=1'





F.A.U. ROUTE NO.	SECTION	COUNTY	TOTAL SHEETS	SHEET NO.
9247	05-00016-01-PV	ST. CLAIR	9	8
STA. 105+00		TO STA. 107+50		
FEDERAL AID PROJECT			CONTRACT 97419	





FAU ROUTE NO. 9247	SECTION 05-00016-01-PV	COUNTY ST. CLAIR	TOTAL SHEETS 9	SHEET NO. 9
STA. 108+00		TO STA. 111+65		
FEDERAL AID PROJECT		CONTRACT 97419		

STA. 108+00 - STA. 111+65 CROSS SECTIONS ST. LOUIS STREET  
SEC. 05-00016-01-PV ST. CLAIR COUNTY