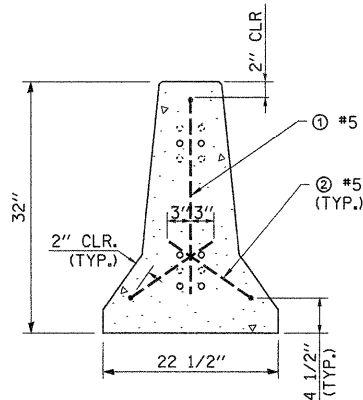


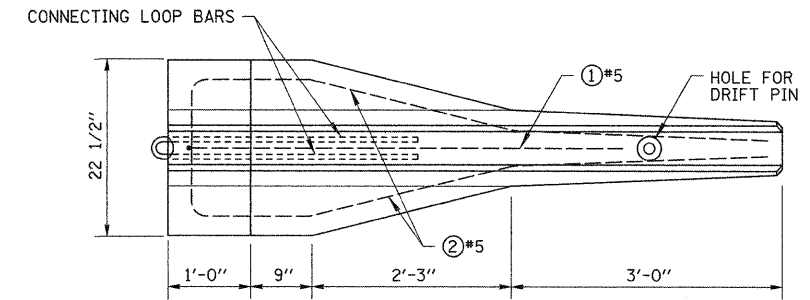
SECTION A-A
N.T.S.



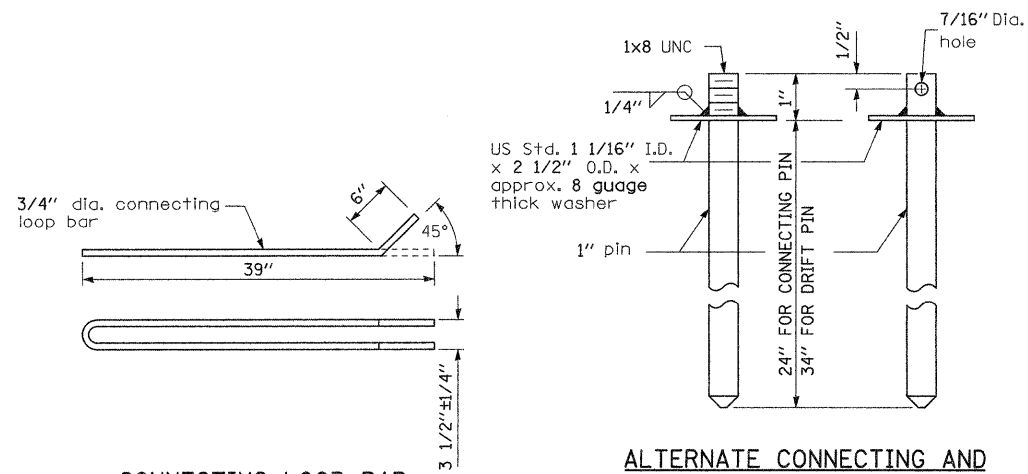
SECTION B-B
N.T.S.

NOTES

1. Connecting Loop Bars shall be 3'-3" long, except for the top loop of the Barrier Terminal, which shall be 2'-0" long.
2. The vertical spacing of the Connecting Loop Bars in a Barrier Terminal is determined by the end of the Barrier Segment to which it is being connected. See Idot Highway Standard 704001.

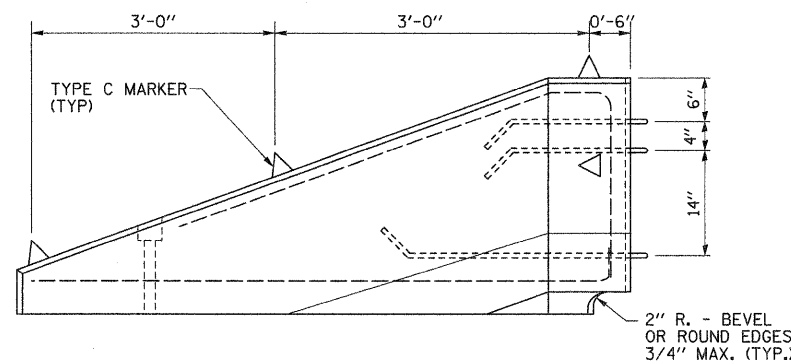


TOP VIEW

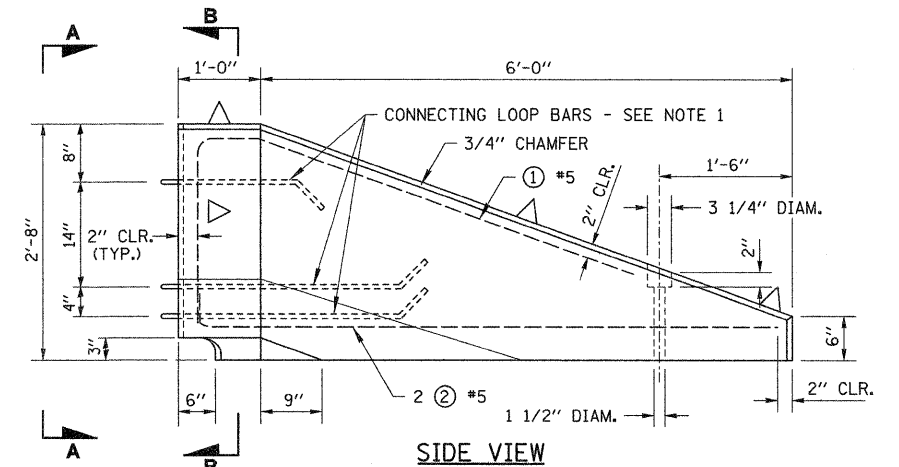


CONNECTING LOOP BAR
N.T.S.

ALTERNATE CONNECTING AND
DRIFT PINS
(End may be beveled 1/4" max.)

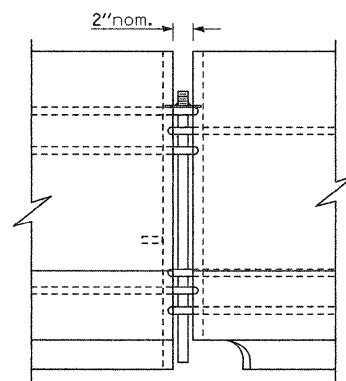
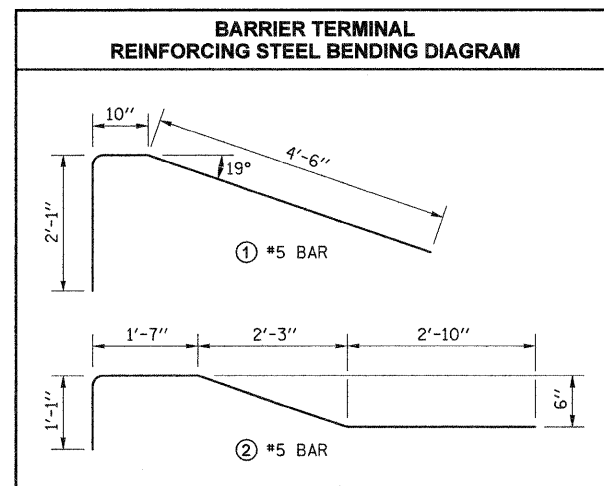


SIDE VIEW

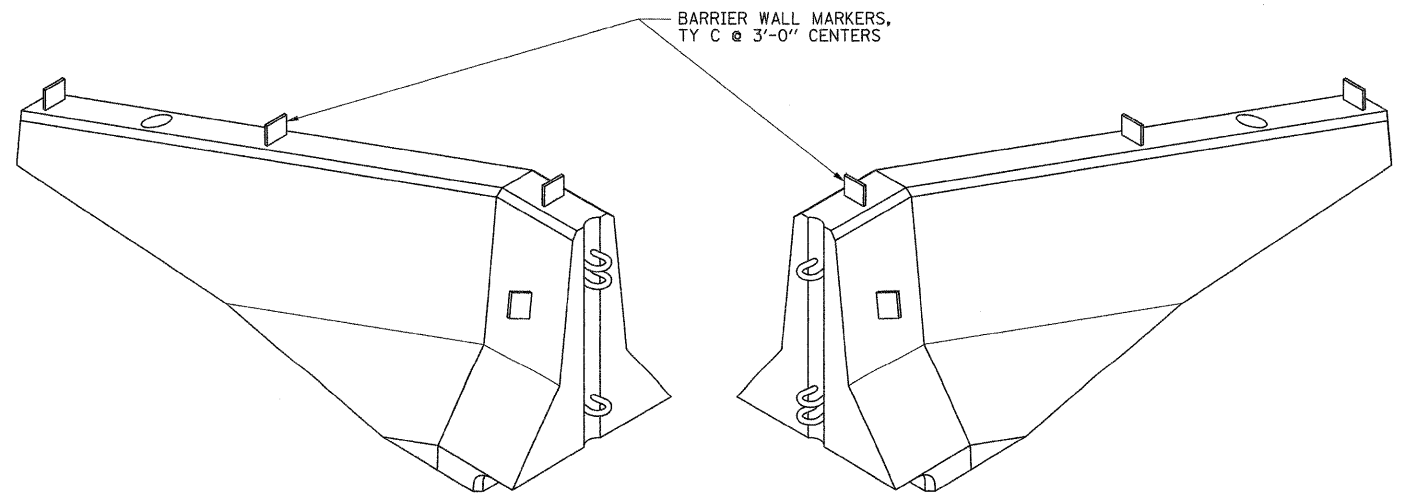


SIDE VIEW

TEMPORARY CONCRETE BARRIER, TERMINAL SECTION (SPECIAL) DETAIL
N.T.S.



CONNECTING DETAIL
N.T.S.



TEMPORARY CONCRETE BARRIER, TERMINAL SECTION (SPECIAL) DETAIL
N.T.S.

| | | | | | | | | | | | | | |
|--------------------------|------------------------|----------------|-----------|---|------------------------------|-----------|-----------|------|----------------|--------------------|--------|--------------|-----------|
| FILE NAME = misc details | USER NAME = Jeremy | DESIGNED - BFK | REVISED - | OHIO AVENUE PEDESTRIAN WALKWAY MADISON, ILLINOIS | MISCELLANEOUS DETAILS | | | | F.A. RTE. | SECTION | COUNTY | TOTAL SHEETS | SHEET NO. |
| | PLOT SCALE = #SCALE# | DRAWN - JJB | REVISED - | | | | | | 09-00049-01-SW | ST. CLAIR | 26 | 21 | |
| | PLOT DATE = 12/21/2009 | CHECKED - BFK | REVISED - | | SCALE: | SHEET NO. | OF SHEETS | STA. | TO STA. | CONTRACT NO. 97420 | | | |
| | | DATE - | REVISED - | | ILLINOIS FED. AID PROJECT | | | | | | | | |