

INDEX OF SHEETS

- 1. COVER SHEET
- 2. SUMMARY OF QUANTITIES AND GENERAL NOTES
- 3.-11. PLAN VIEWS
- 12. DETAILS

STATE OF ILLINOIS  
DEPARTMENT OF TRANSPORTATION  
DIVISION OF HIGHWAYS  
**PROPOSED  
HIGHWAY PLANS**

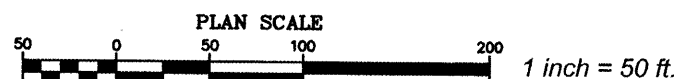
FEDERAL AID URBAN ROUTE 8902  
GOVERNORS' PARKWAY  
SECTION 09-00075-01-LS  
MADISON COUNTY  
PROJECT ARA-5011(299)  
JOB NO. C-98-315-10

RTE. NO.	SECTION	COUNTY	TOTAL SHEETS	SHEET NO.
FAU 8902	09-00075-01-LS	MADISON	12	1

FEDERAL AID PROJECT CONTRACT NO. 97428

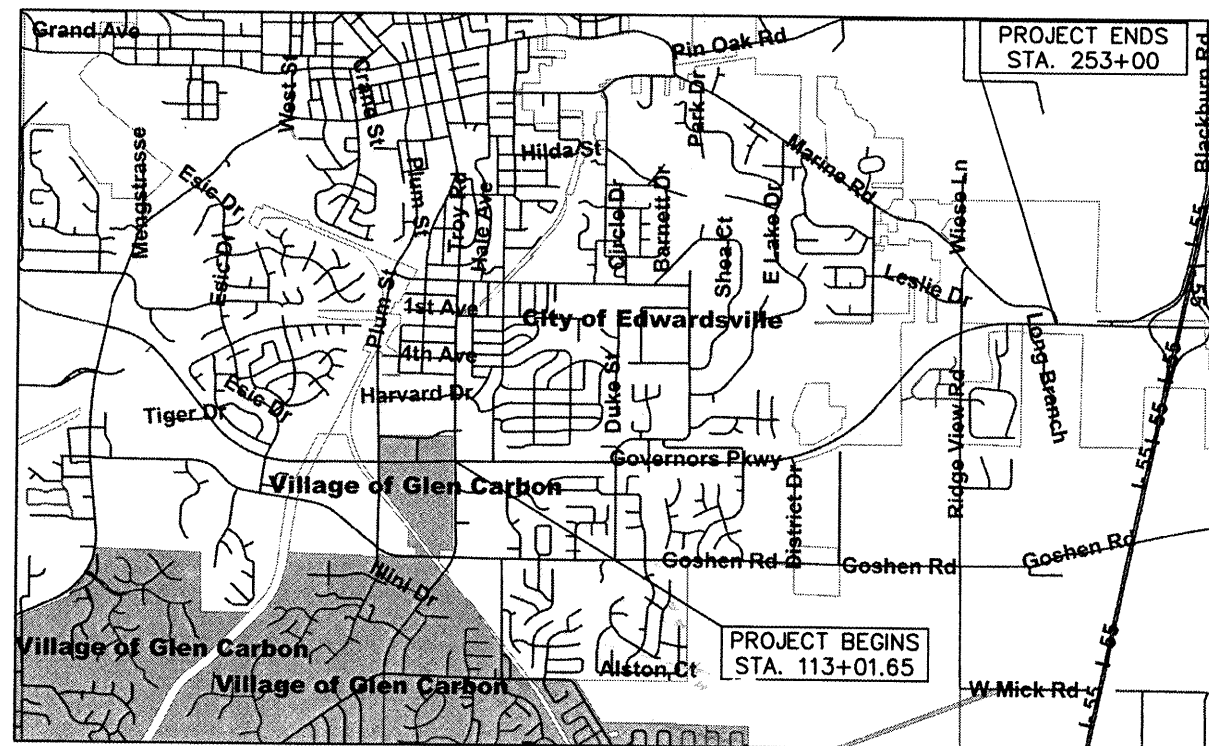
HIGHWAY STANDARDS  
000001-05  
701001-02

J.U.L.I.E.  
JOINT UTILITY LOCATION INFORMATION FOR EXCAVATION  
1-800-892-0123



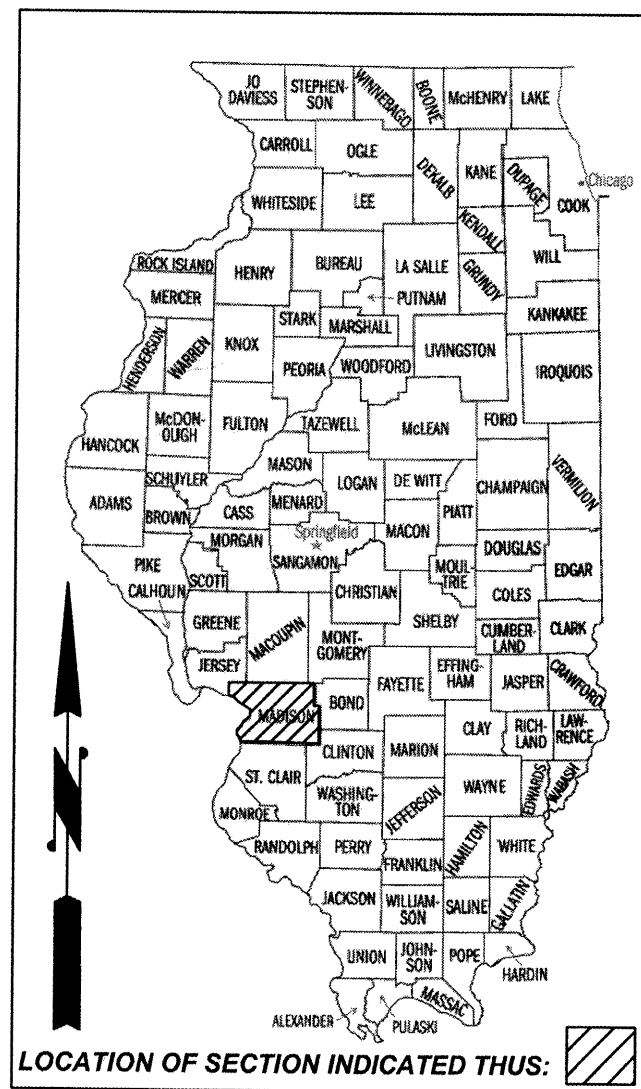
FULL SIZE PLANS HAVE BEEN PREPARED USING ENGINEERING SCALES. REDUCED SIZED PLANS WILL NOT CONFORM TO STANDARD SCALES. IN MAKING MEASUREMENTS ON REDUCED PLANS, THE ABOVE SCALES MAY BE USED.

LOCATION MAP



NOT TO SCALE

LENGTH OF PROJECT - 13,998.35 FT / 2.651 MILES

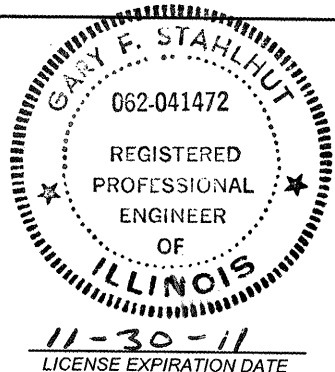


LOCATION OF SECTION INDICATED THUS:

THESE PLANS WERE PREPARED BY ME OR BY A FULL TIME MEMBER OF MY STAFF WORKING UNDER MY PERSONAL SUPERVISION.

*Gary F. Stahlhut* 1-5-10  
GARY F. STAHLHUT, P.E. No. 062-041472 DATE

MADISON COUNTY HIGHWAY DEPARTMENT  
7037 MARINE ROAD  
EDWARDSVILLE, IL 62025  
PHONE: (618) 692-7040  
FAX: (618) 692-7049



STATE OF ILLINOIS  
DEPARTMENT OF TRANSPORTATION

Approved 1-5-10  
*Gary F. Stahlhut*  
MADISON COUNTY ENGINEER

Passed 1-5-10  
*[Signature]*  
District 8 Engineer of Local Roads & Streets

Releasing for Bid  
Based on Limited  
Review 1-5-10  
*Mary C. [Signature]*  
Deputy Director of Highways, Region 5 Engineer

**SUMMARY OF QUANTITIES**

ITEM NUMBER	ITEM DESCRIPTION	UNIT	QUANTITY
67100100	MOBILIZATION	L SUM	1
A2000116	TREE, ACER X FREEMANII AUTUMN BLAZE ( AUTUMN BLAZE FREEMAN MAPLE), 2" CALIPER, BALLED AND BURLAPPED	EACH	24
A2001016	TREE, ACER RUBRUM ( RED MAPLE), 2" CALIPER, BALLED AND BURLAPPED	EACH	13
A2001716	TREE, ACER SACCHARUM( SUGAR MAPLE), 2" CALIPER, BALLED AND BURLAPPED	EACH	14
A2002316	TREE, BETULA NIGRA ( RIVER BIRCH), 2" CALIPER, BALLED AND BURLAPPED	EACH	9
A2002716	TREE, CARYA OVATA ( SHAGBARK HICKORY), 2" CALIPER, BALLED AND BURLAPPED	EACH	4
A2005116	TREE, JUGLANS NIGRA ( BLACK WALNUT), 2" CALIPER, BALLED AND BURLAPPED	EACH	1
A2005416	TREE, LIRIODENDRON TULIPIFERA ( TULIP TREE), 2" CALIPER, BALLED AND BURLAPPED	EACH	1
A2005516	TREE, NYSSA SYLVATICA ( BLACK TUPELO), 2" CALIPER, BALLED AND BURLAPPED	EACH	7
A2005816	TREE, PLATANUS OCCIDENTALIS ( SYCAMORE), 2" CALIPER, BALLED AND BURLAPPED	EACH	3
A2006216	TREE, POPULUS TREMULOIDES ( QUAKING ASPEN), 2" CALIPER, BALLED AND BURLAPPED	EACH	8
A2006416	TREE, QUERCUS ALBA ( WHITE OAK), 2" CALIPER, BALLED AND BURLAPPED	EACH	4
A2006616	TREE, QUERCUS IMBRICARIA ( SHINGLE OAK), 2" CALIPER, BALLED AND BURLAPPED	EACH	16
A2006916	TREE, QUERCUS PALUSTRIS ( PIN OAK), 2" CALIPER, BALLED AND BURLAPPED	EACH	10
A2007616	TREE, TAXODIUM DISTICHUM ( COMMON BALD CYPRESS), 2" CALIPER, BALLED AND BURLAPPED	EACH	19
A2007816	TREE, TILIA AMERICANA ( AMERICAN LINDEN/ BASSWOOD), 2" CALIPER, BALLED AND BURLAPPED	EACH	8
A2008116	TREE, TILIA CORDATA GREENSPIRE ( GREENSPIRE LITTLE LEAF LINDEN), 2" CALIPER, BALLED AND BURLAPPED	EACH	4
B2000416	TREE, ACER GRISEUM ( PAPERBARK MAPLE), 2" CALIPER, BALLED AND BURLAPPED	EACH	7
B2001116	TREE, CERCIS CANADENSIS ( EASTERN REDBUD), 2" CALIPER, BALLED AND BURLAPPED	EACH	3
B2001316	TREE, CORNUS FLORIDA ( FLOWERING DOGWOOD), 2" CALIPER, BALLED AND BURLAPPED	EACH	7
B2001616	TREE, CRATAEGUS CRUSGALLI INERMIS( THORN LESS COCKSPUR HAWTHORN), 2" CALIPER, BALLED AND BURLAPPED	EACH	2
B2002216	TREE, CRATAEGUS VIRDIS WINTER KING ( WINTER KING GREEN HAWTHORN), 2" CALIPER, BALLED AND BURLAPPED	EACH	6
B2002416	TREE, MAGNOLIA SOULANGIANA ( SAUCER MAGNOLIA), 2" CALIPER, BALLED AND BURLAPPED	EACH	1
B2003616	TREE, MALUS INDIAN MAGIC ( INDIAN MAGIC CRABAPPLE), 2" CALIPER, BALLED AND BURLAPPED	EACH	12
B2004116	TREE, MALUS PRAIRIFIRE ( PRAIRIFIRE CRABAPPLE), 2" CALIPER, BALLED AND BURLAPPED	EACH	11
B2004416	TREE, MALUS RED BARON ( RED BARON CRABAPPLE), 2" CALIPER, BALLED AND BURLAPPED	EACH	5
B2004516	TREE, MALUS RED JEWEL ( RED JEWEL CRABAPPLE), 2" CALIPER, BALLED AND BURLAPPED	EACH	12
B2004716	TREE, MALUS ROYALTY ( ROYALTY CRABAPPLE), 2" CALIPER, BALLED AND BURLAPPED	EACH	3
B2004916	TREE, MALUS SARGENTII TINA ( TINA SARGENT CRABAPPLE), 2" CALIPER, BALLED AND BURLAPPED	EACH	7
B2010070	TREE, CLADRASTIS KENTUCKEA ( AMERICAN YELLOWWOOD), 2" CALIPER, BALLED AND BURLAPPED	EACH	4
B2013916	TREE, MALUS LOUISA ( LOUISA CRABAPPLE), 2" CALIPER, BALLED AND BURLAPPED	EACH	3

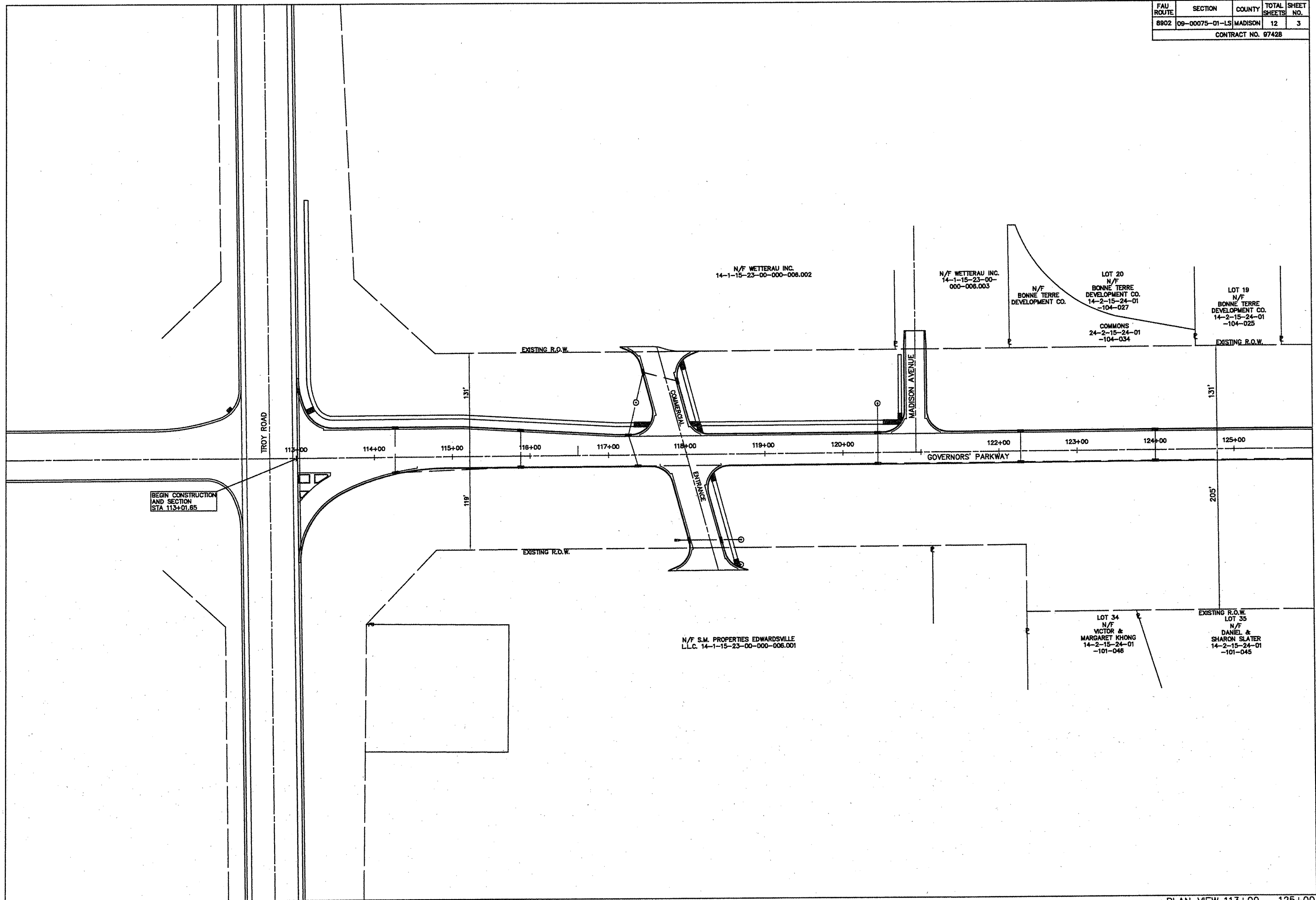
RTE. NO.	SECTION	COUNTY	TOTAL SHEETS	SHEET NO.
FAU 8902	09-00075-01-LS	MADISON	12	2

CONTRACT NO. 97428

**GENERAL NOTES**

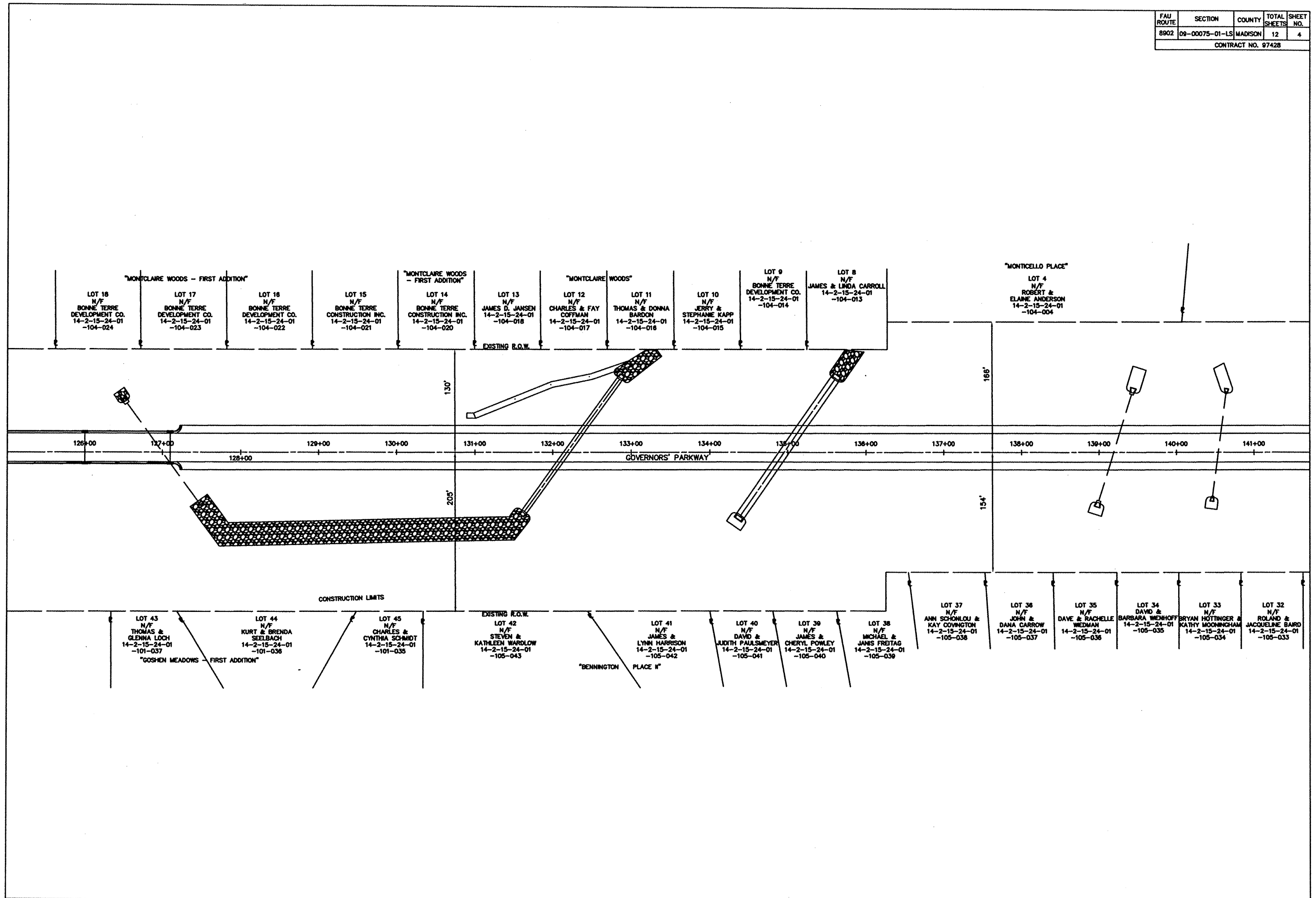
- TREES SHALL BE PLANTED AT LEAST 10 FEET FROM THE RIGHT OF WAY LINE.
- IT IS THE CONTRACTOR'S RESPONSIBILITY TO NOTIFY ALL UTILITIES TO DETERMINE EXACT LOCATION. THE CONTRACTOR IS RESPONSIBLE FOR DAMAGE DONE TO ANY UTILITY DURING EXECUTION OF THIS WORK.
- ALL AREAS DISTURBED BY THE CONTRACTOR DURING PLANTING SHALL BE SEEDED WITH CLASS 2 SEEDING AS DIRECTED BY THE ENGINEER. THIS WORK SHALL BE INCLUDED AS PART OF THE INDIVIDUAL TREE PAY ITEMS AND NO ADDITIONAL COMPENSATION SHALL BE ALLOWED.
- ILLINOIS STATE LAW REQUIRES A 48-HOUR NOTICE TO ALL UTILITIES BEFORE DIGGING. FIELD MARKING OF FACILITIES MAY ALSO BE OBTAINED BY CALLING J.U.L.I.E. AND FOR NON-J.U.L.I.E. MEMBERS, THE UTILITY COMPANY DIRECTLY. AGENCIES KNOWN TO HAVE FACILITIES WITHIN THE PROJECT AREA ARE AS FOLLOWS:  
  - \* CITY OF EDWARDSVILLE - 118 HILLSBORO AVENUE, EDWARDSVILLE, IL 62025
  - \* AMERENIP - 2600 NORTH CENTER STREET, MARYVILLE, IL 62062
  - \* AT&T - 203 GOETHE AVENUE, COLLINSVILLE, IL 62234
  - \* CHARTER COMMUNICATIONS - 210 WEST DIVISION STREET, MARYVILLE, IL 62062
- (MEMBERS OF J.U.L.I.E. (800)892-0123 ARE INDICATED BY \*. NON-J.U.L.I.E. MEMBERS MUST BE NOTIFIED INDIVIDUALLY.) ALL TREES SHALL BE PLACED IN SUCH A WAY SO THAT THEY WILL NOT INTERFERE WITH OVERHEAD UTILITIES.
- TREE LOCATIONS AS SHOWN IN THE PLANS ARE APPROXIMATE. NO SURVEY WAS CONDUCTED FOR THIS PROJECT. EXACT TREE LOCATIONS ARE TO BE DETERMINED IN THE FIELD BY THE RESIDENT ENGINEER
- BRACING OF THE TREES AS SPECIFIED IN ARTICLE 253.13 WILL NOT BE REQUIRED.

FAU ROUTE	SECTION	COUNTY	TOTAL SHEETS	SHEET NO.
8902	09-00075-01-LS	MADISON	12	3
CONTRACT NO. 97428				

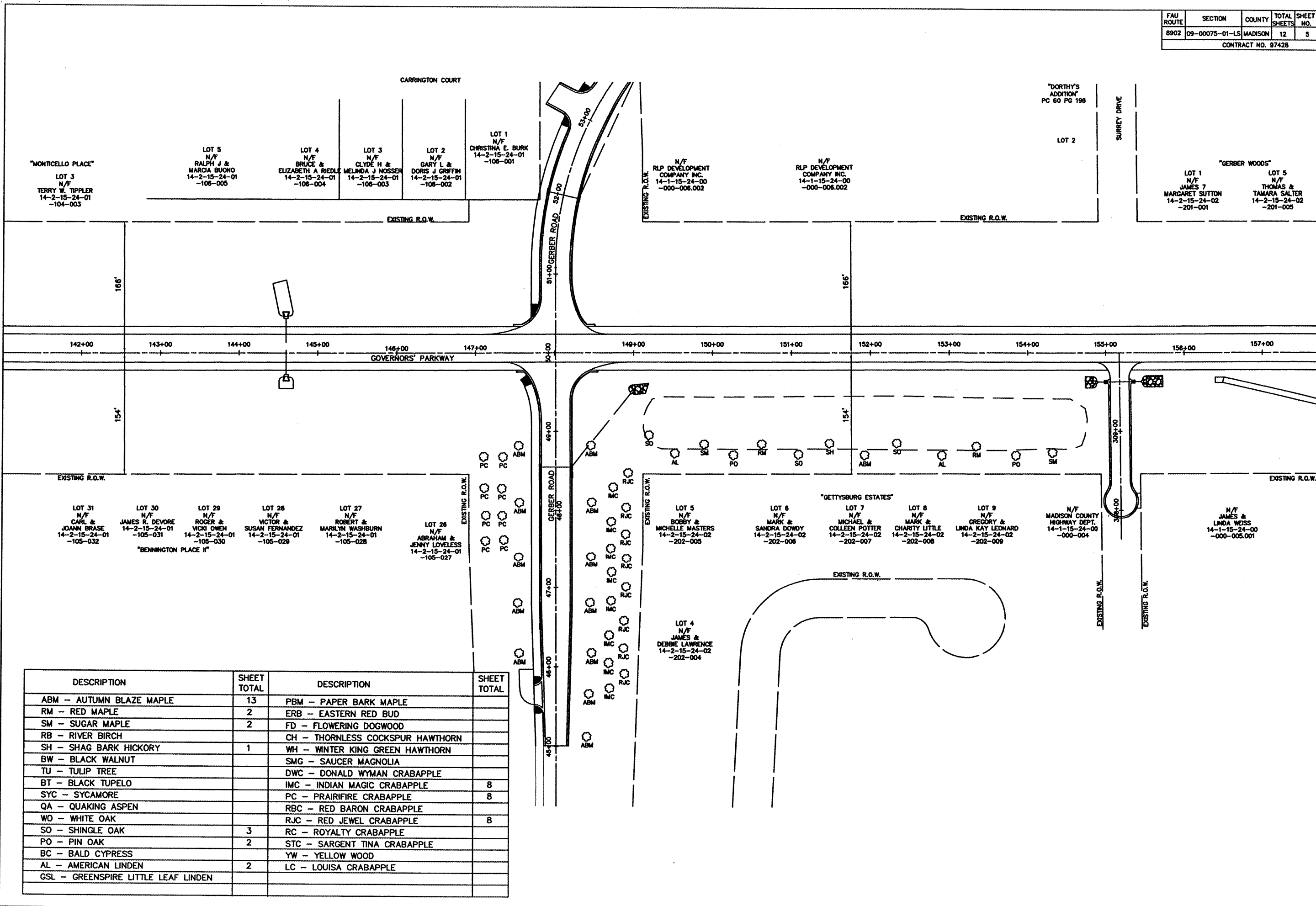


PLAN VIEW 113+00 - 125+00

FAU ROUTE	SECTION	COUNTY	TOTAL SHEETS	SHEET NO.
8902	09-00075-01-LS	MADISON	12	4
CONTRACT NO. 97428				

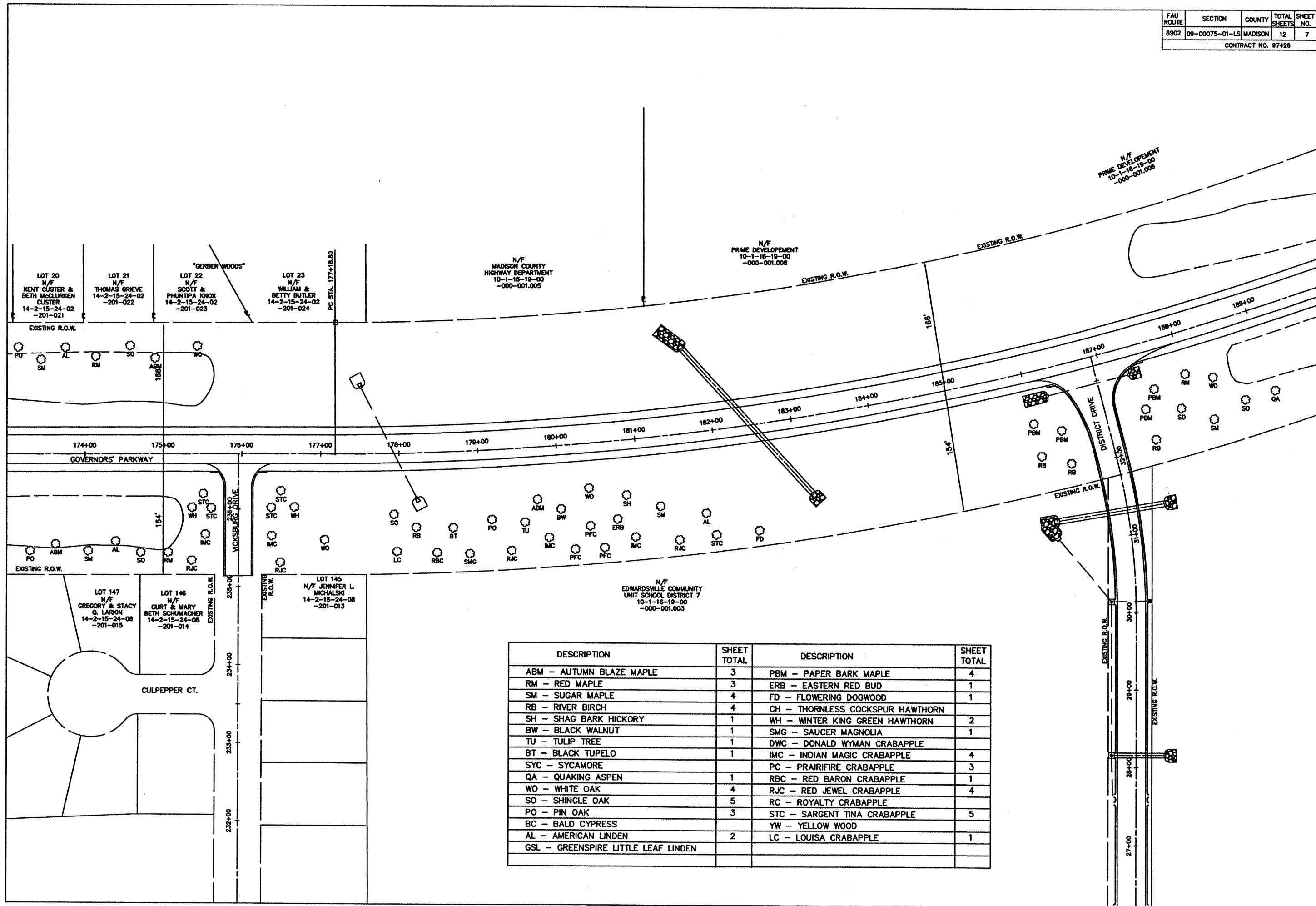


FAU ROUTE	SECTION	COUNTY	TOTAL SHEETS	SHEET NO.
8902	09-00075-01-LS	MADISON	12	5
CONTRACT NO. 97428				



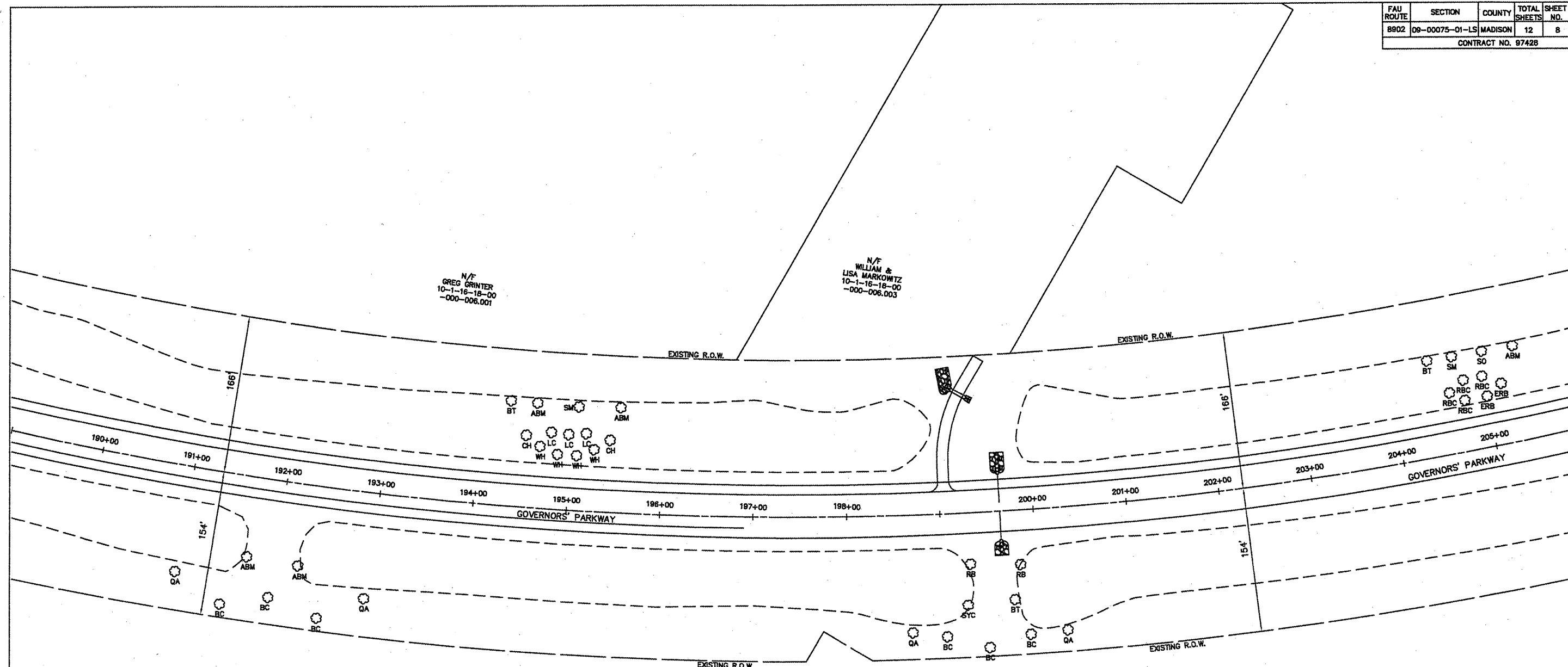
DESCRIPTION	SHEET TOTAL	DESCRIPTION	SHEET TOTAL
ABM - AUTUMN BLAZE MAPLE	13	PBM - PAPER BARK MAPLE	
RM - RED MAPLE	2	ERB - EASTERN RED BUD	
SM - SUGAR MAPLE	2	FD - FLOWERING DOGWOOD	
RB - RIVER BIRCH		CH - THORNLESS COCKSPUR HAWTHORN	
SH - SHAG BARK HICKORY	1	WH - WINTER KING GREEN HAWTHORN	
BW - BLACK WALNUT		SMG - SAUCER MAGNOLIA	
TU - TULIP TREE		DWC - DONALD WYMAN CRABAPPLE	
BT - BLACK TUPELO		IMC - INDIAN MAGIC CRABAPPLE	8
SYC - SYCAMORE		PC - PRAIRIFIRE CRABAPPLE	8
QA - QUAKING ASPEN		RBC - RED BARON CRABAPPLE	
WO - WHITE OAK		RJC - RED JEWEL CRABAPPLE	8
SO - SHINGLE OAK	3	RC - ROYALTY CRABAPPLE	
PO - PIN OAK	2	STC - SARGENT TINA CRABAPPLE	
BC - BALD CYPRESS		YW - YELLOW WOOD	
AL - AMERICAN LINDEN	2	LC - LOUISA CRABAPPLE	
GSL - GREENSPIRE LITTLE LEAF LINDEN			





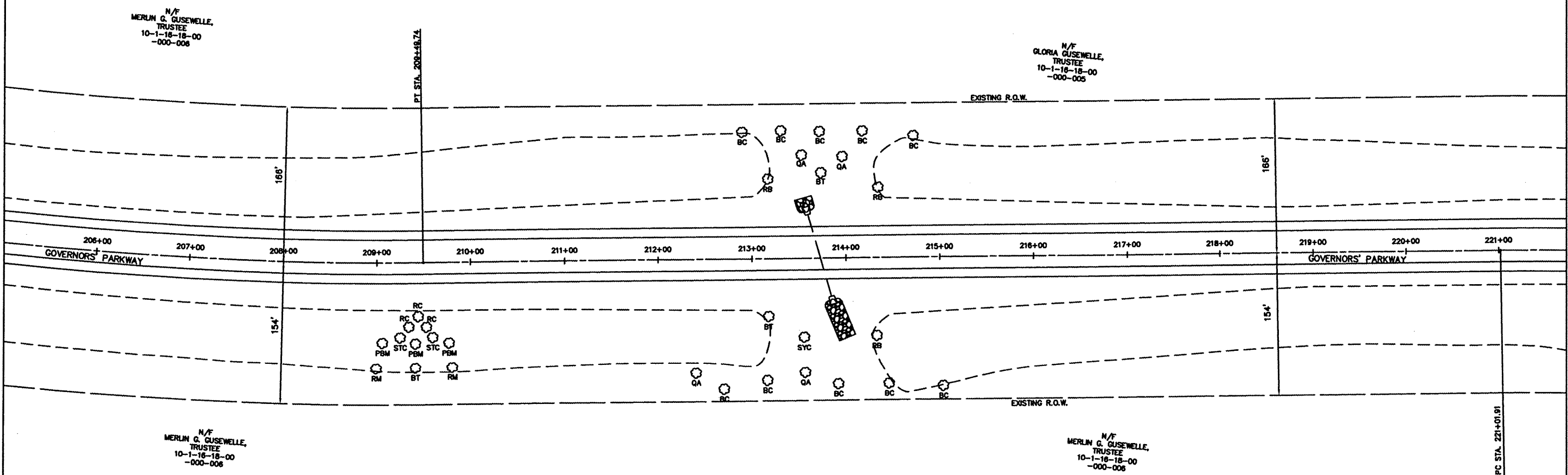
DESCRIPTION	SHEET TOTAL	DESCRIPTION	SHEET TOTAL
ABM - AUTUMN BLAZE MAPLE	3	PBM - PAPER BARK MAPLE	4
RM - RED MAPLE	3	ERB - EASTERN RED BUD	1
SM - SUGAR MAPLE	4	FD - FLOWERING DOGWOOD	1
RB - RIVER BIRCH	4	CH - THORNLESS COCKSPUR HAWTHORN	
SH - SHAG BARK HICKORY	1	WH - WINTER KING GREEN HAWTHORN	2
BW - BLACK WALNUT	1	SMG - SAUCER MAGNOLIA	1
TU - TULIP TREE	1	DWC - DONALD WYMAN CRABAPPLE	
BT - BLACK TUPELO	1	IMC - INDIAN MAGIC CRABAPPLE	4
SYC - SYCAMORE		PC - PRAIRIFIRE CRABAPPLE	3
QA - QUAKING ASPEN	1	RBC - RED BARON CRABAPPLE	1
WO - WHITE OAK	4	RJC - RED JEWEL CRABAPPLE	4
SO - SHINGLE OAK	5	RC - ROYALTY CRABAPPLE	
PO - PIN OAK	3	STC - SARGENT TINA CRABAPPLE	5
BC - BALD CYPRESS		YW - YELLOW WOOD	
AL - AMERICAN LINDEN	2	LC - LOUISA CRABAPPLE	1
GSL - GREENSPIRE LITTLE LEAF LINDEN			





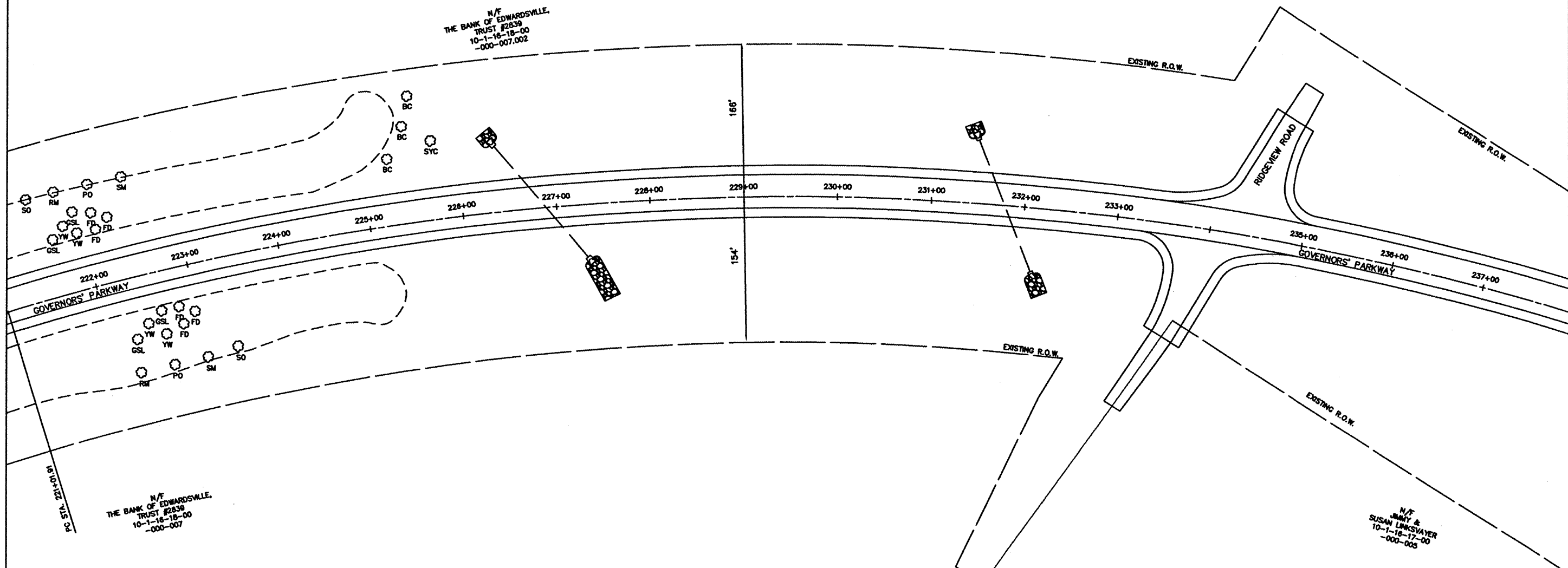
DESCRIPTION	SHEET TOTAL	DESCRIPTION	SHEET TOTAL
ABM - AUTUMN BLAZE MAPLE	5	PBM - PAPER BARK MAPLE	
RM - RED MAPLE		ERB - EASTERN RED BUD	2
SM - SUGAR MAPLE	2	FD - FLOWERING DOGWOOD	
RB - RIVER BIRCH	2	CH - THORNLESS COCKSPUR HAWTHORN	2
SH - SHAG BARK HICKORY		WH - WINTER KING GREEN HAWTHORN	4
BW - BLACK WALNUT		SMG - SAUCER MAGNOLIA	
TU - TULIP TREE		DWC - DONALD WYMAN CRABAPPLE	
BT - BLACK TUPELO	3	IMC - INDIAN MAGIC CRABAPPLE	
SYC - SYCAMORE	1	PC - PRAIRIFIRE CRABAPPLE	
QA - QUAKING ASPEN	4	RBC - RED BARON CRABAPPLE	4
WO - WHITE OAK		RJC - RED JEWEL CRABAPPLE	
SO - SHINGLE OAK	1	RC - ROYALTY CRABAPPLE	
PO - PIN OAK		STC - SARGENT TINA CRABAPPLE	
BC - BALD CYPRESS	6	YW - YELLOW WOOD	
AL - AMERICAN LINDEN		LC - LOUISA CRABAPPLE	3
GSL - GREENSPIRE LITTLE LEAF LINDEN			





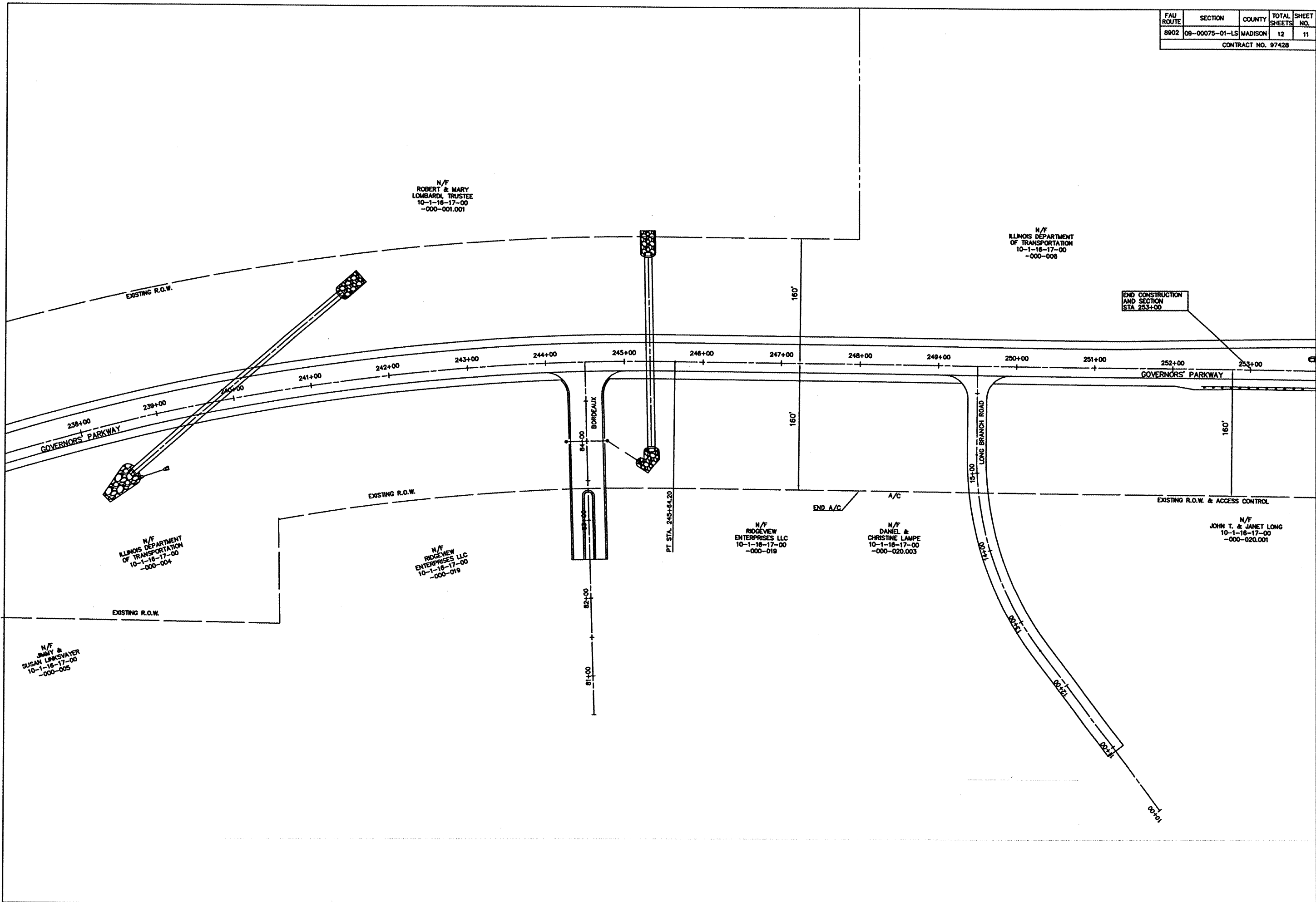
DESCRIPTION	SHEET TOTAL	DESCRIPTION	SHEET TOTAL
ABM - AUTUMN BLAZE MAPLE		PBM - PAPER BARK MAPLE	3
RM - RED MAPLE	2	ERB - EASTERN RED BUD	
SM - SUGAR MAPLE		FD - FLOWERING DOGWOOD	
RB - RIVER BIRCH	3	CH - THORNLESS COCKSPUR HAWTHORN	
SH - SHAG BARK HICKORY		WH - WINTER KING GREEN HAWTHORN	
BW - BLACK WALNUT		SMG - SAUCER MAGNOLIA	
TU - TULIP TREE		DWC - DONALD WYMAN CRABAPPLE	
BT - BLACK TUPELO	3	IMC - INDIAN MAGIC CRABAPPLE	
SYC - SYCAMORE	1	PC - PRAIRIFIRE CRABAPPLE	
QA - QUAKING ASPEN	4	RBC - RED BARON CRABAPPLE	
WO - WHITE OAK		RJC - RED JEWEL CRABAPPLE	
SO - SHINGLE OAK		RC - ROYALTY CRABAPPLE	3
PO - PIN OAK		STC - SARGENT TINA CRABAPPLE	2
BC - BALD CYPRESS	10	YW - YELLOW WOOD	
AL - AMERICAN LINDEN		LC - LOUISA CRABAPPLE	
GSL - GREENSPIRE LITTLE LEAF LINDEN			

FAU ROUTE	SECTION	COUNTY	TOTAL SHEETS	SHEET NO.
8902	09-00075-01-LS	MADISON	12	10
CONTRACT NO. 97428				



DESCRIPTION	SHEET TOTAL	DESCRIPTION	SHEET TOTAL
ABM - AUTUMN BLAZE MAPLE		PBM - PAPER BARK MAPLE	
RM - RED MAPLE	2	ERB - EASTERN RED BUD	
SM - SUGAR MAPLE	2	FD - FLOWERING DOGWOOD	6
RB - RIVER BIRCH		CH - THORNLESS COCKSPUR HAWTHORN	
SH - SHAG BARK HICKORY		WH - WINTER KING GREEN HAWTHORN	
BW - BLACK WALNUT		SMG - SAUCER MAGNOLIA	
TU - TULIP TREE		DWC - DONALD WYMAN CRABAPPLE	
BT - BLACK TUPELO		IMC - INDIAN MAGIC CRABAPPLE	
SYC - SYCAMORE	1	PC - PRAIRIFIRE CRABAPPLE	
QA - QUAKING ASPEN		RBC - RED BARON CRABAPPLE	
WO - WHITE OAK		RJC - RED JEWEL CRABAPPLE	
SO - SHINGLE OAK	2	RC - ROYALTY CRABAPPLE	
PO - PIN OAK	2	STC - SARGENT TINA CRABAPPLE	
BC - BALD CYPRESS	3	YW - YELLOW WOOD	4
AL - AMERICAN LINDEN		LC - LOUISA CRABAPPLE	
GSL - GREENSPIRE LITTLE LEAF LINDEN	4		

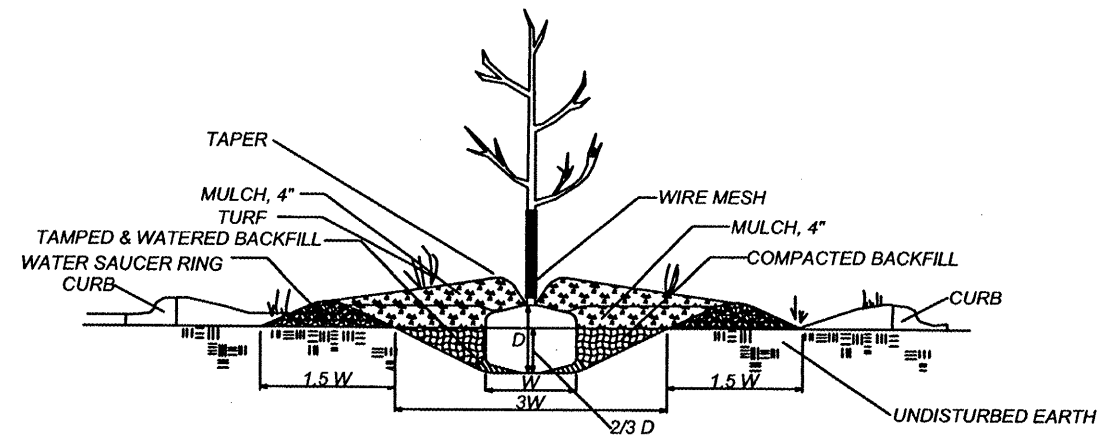
FAU ROUTE	SECTION	COUNTY	TOTAL SHEETS	SHEET NO.
8902	08-00075-01-LS	MADISON	12	11
CONTRACT NO. 97428				



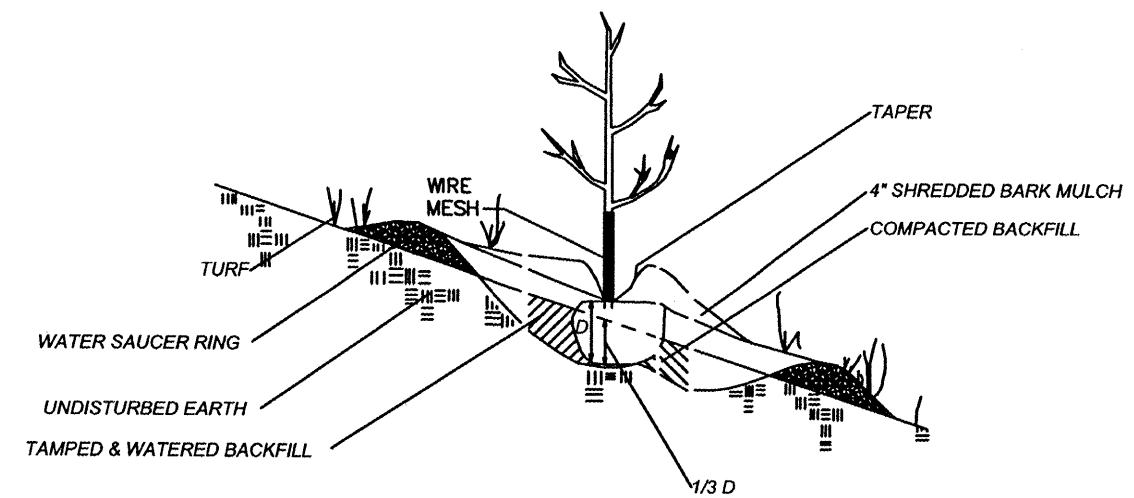
PLAN VIEW 237+00 - 253+00

FAU ROUTE	SECTION	COUNTY	TOTAL SHEETS	SHEET NO.
8902	08-00075-01-LS	MADISON	12	12
CONTRACT NO. 97428				

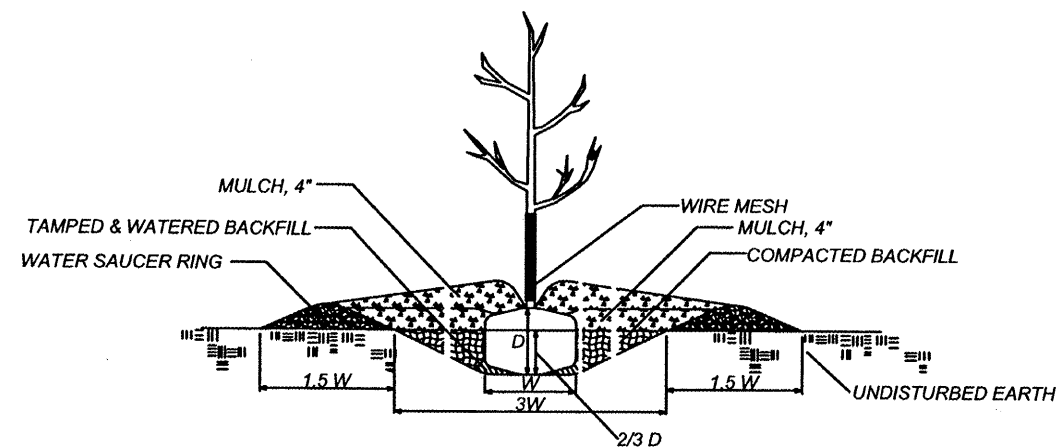
PARKWAY PLANTING DETAIL



HILLSIDE PLANTING DEPTH



FLAT GROUND PLANTING DETAIL



DITCH AREA PLANTING DETAIL

