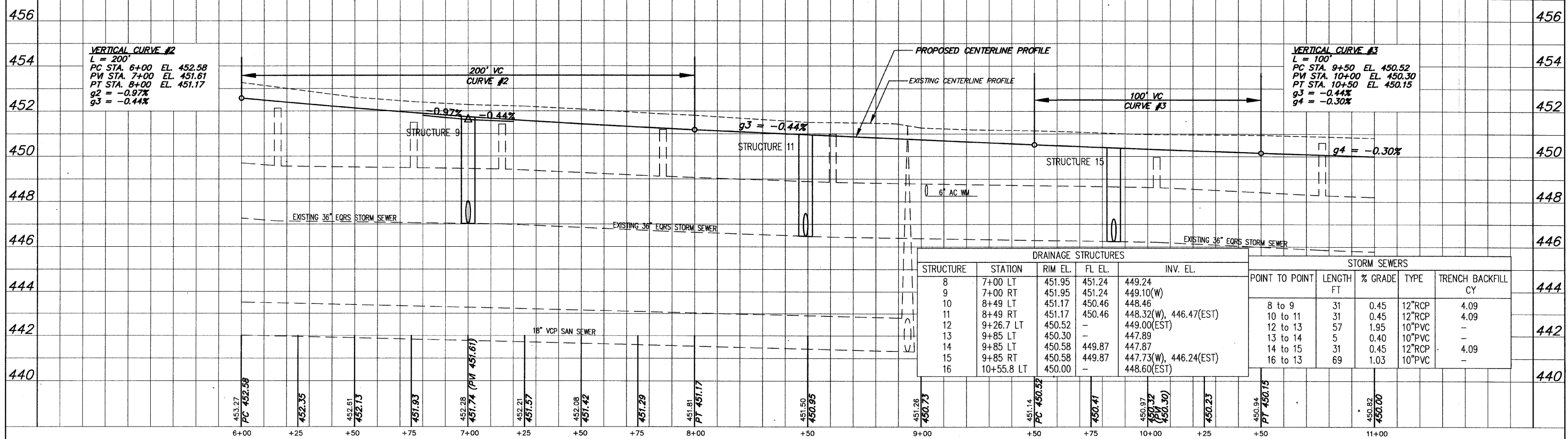


BENCH MARKS

IBM3 - EL. 453.43
Top Bolt Betw. "E" & "L" in "Mueller" on F.H. @ N.E. Cor. Fifth & DuQuoin St. See Pg. 20 Bk. 577

IBM4 - EL. 452.50
Top Bolt Betw. "E" & "L" in "Mueller" on F.H. @ S.W. Cor. Clayton & Division St. See Pg. 20 Bk. 577



DRAINAGE STRUCTURES				
STRUCTURE	STATION	RIM EL.	FL EL.	INV. EL.
8	7+00 LT	451.95	451.24	449.24
9	7+00 RT	451.95	451.24	449.10(W)
10	8+49 LT	451.17	450.46	448.46
11	8+49 RT	451.17	450.46	448.32(W), 446.47(EST)
12	9+26.7 LT	450.52	-	449.00(EST)
13	9+85 LT	450.30	-	447.89
14	9+85 LT	450.58	449.87	447.87
15	9+85 RT	450.58	449.87	447.73(W), 446.24(EST)
16	10+55.8 LT	450.00	-	448.60(EST)

STORM SEWERS				
POINT TO POINT	LENGTH FT	% GRADE	TYPE	TRENCH BACKFILL CY
8 to 9	31	0.45	12"RCP	4.09
10 to 11	31	0.45	12"RCP	4.09
12 to 13	57	1.95	10"PVC	-
13 to 14	5	0.40	10"PVC	-
14 to 15	31	0.45	12"RCP	4.09
16 to 13	69	1.03	10"PVC	-