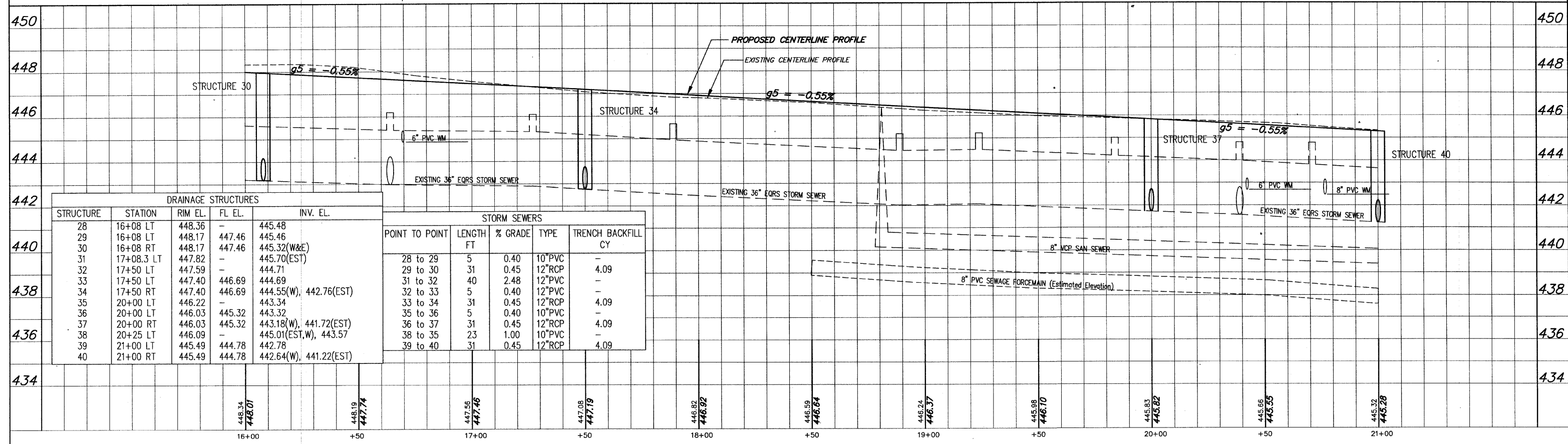


**BENCH MARKS**

TBM6 - EL. 448.09  
 Top Bolt Betw. "E" & "L" in "Mueller"  
 on F.H. @ S.E. Cor. Reed & DuQuoin St.  
 See Pg. 21 Bk. 577



**DRAINAGE STRUCTURES**

STRUCTURE	STATION	RIM EL.	FL. EL.	INV. EL.
28	16+08 LT	448.36	-	445.48
29	16+08 LT	448.17	447.46	445.46
30	16+08 RT	448.17	447.46	445.32(W&E)
31	17+08.3 LT	447.82	-	445.70(EST)
32	17+50 LT	447.59	-	444.71
33	17+50 LT	447.40	446.69	444.69
34	17+50 RT	447.40	446.69	444.55(W), 442.76(EST)
35	20+00 LT	446.22	-	443.34
36	20+00 LT	446.03	445.32	443.32
37	20+00 RT	446.03	445.32	443.18(W), 441.72(EST)
38	20+25 LT	446.09	-	445.01(EST,W), 443.57
39	21+00 LT	445.49	444.78	442.78
40	21+00 RT	445.49	444.78	442.64(W), 441.22(EST)

**STORM SEWERS**

POINT TO POINT	LENGTH FT	% GRADE	TYPE	TRENCH BACKFILL CY
28 to 29	5	0.40	10" PVC	-
29 to 30	31	0.45	12" RCP	4.09
30 to 31	40	2.48	12" PVC	-
31 to 32	5	0.40	12" PVC	-
32 to 33	31	0.45	12" RCP	4.09
33 to 34	5	0.40	10" PVC	-
34 to 35	31	0.45	12" RCP	4.09
35 to 36	23	1.00	10" PVC	-
36 to 37	31	0.45	12" RCP	4.09
37 to 38	31	0.45	12" RCP	4.09
38 to 39	31	0.45	12" RCP	4.09
39 to 40	31	0.45	12" RCP	4.09