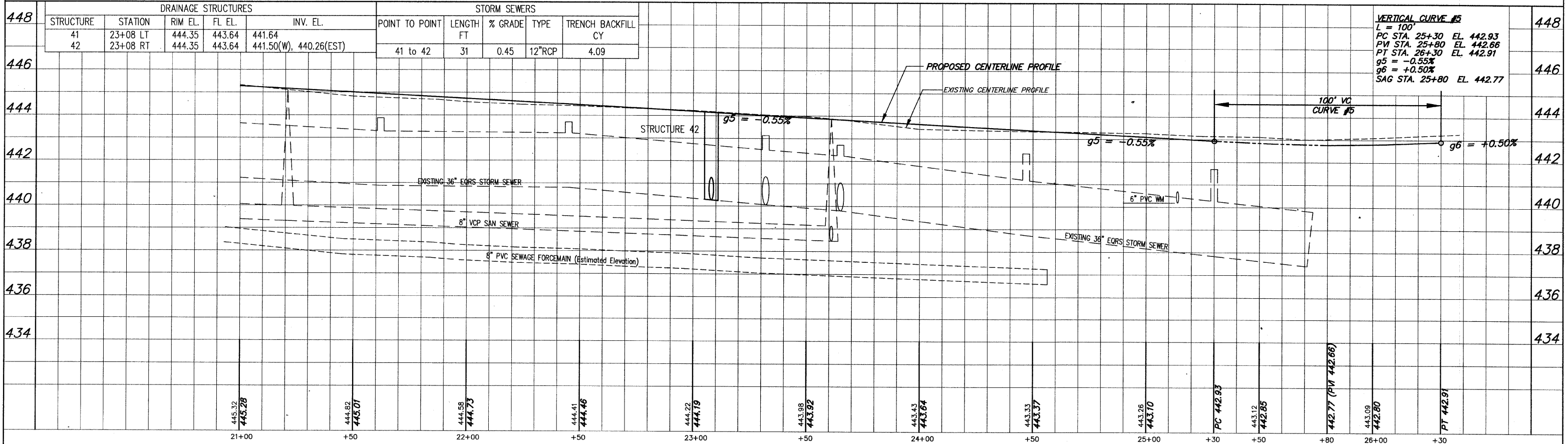


**BENCH MARKS**

<b>TBM7 EL. 446.64</b> Spike nail in PP/3Trans on S. Side Division St., 150' + W. of C.L. DuQuoin St. See Pg. 21 Bk. 577	<b>TBM7A - EL. 442.30</b> Chisled on S. End Conc. Headwall to 42" RCP on W. Side DuQuoin St. @ Sta. 25+70 - 32.7' Lt. B.L. A See Pg. 1 Bk. 249
---	--



DRAINAGE STRUCTURES					STORM SEWERS				
STRUCTURE	STATION	RIM EL.	FL EL.	INV. EL.	POINT TO POINT	LENGTH FT	% GRADE	TYPE	TRENCH BACKFILL CY
41	23+08 LT	444.35	443.64	441.64	41 to 42	31	0.45	12"RCP	4.09
42	23+08 RT	444.35	443.64	441.50(W), 440.26(EST)					

**VERTICAL CURVE #5**  
 L = 100'  
 PC STA. 25+30 EL. 442.93  
 PVI STA. 25+80 EL. 442.66  
 PT STA. 26+30 EL. 442.91  
 g5 = -0.55%  
 g6 = +0.50%  
 SAG STA. 25+80 EL. 442.77