

STATE OF ILLINOIS
DEPARTMENT OF TRANSPORTATION

| F.A.S. RTE. | SECTION | COUNTY | TOTAL SHEETS | SHEET NO. |
|-------------|----------------|----------|--------------------|-----------|
| 338 | (33,34)RS-5,SW | IROQUOIS | 23 | 1 |
| | | ILLINOIS | CONTRACT NO. 66K56 | |

INDEX OF SHEETS

- 1 COVER SHEET
- 2 GENERAL NOTES & COMMITMENTS
- 3.6 SUMMARY OF QUANTITIES
- 7 TYPICAL SECTIONS
- 8-11 SCHEDULES
- 12 LAYOUT MAP
- 13-20 ADA RAMP DETAILS
- 21-23 MISCELLANEOUS DETAILS

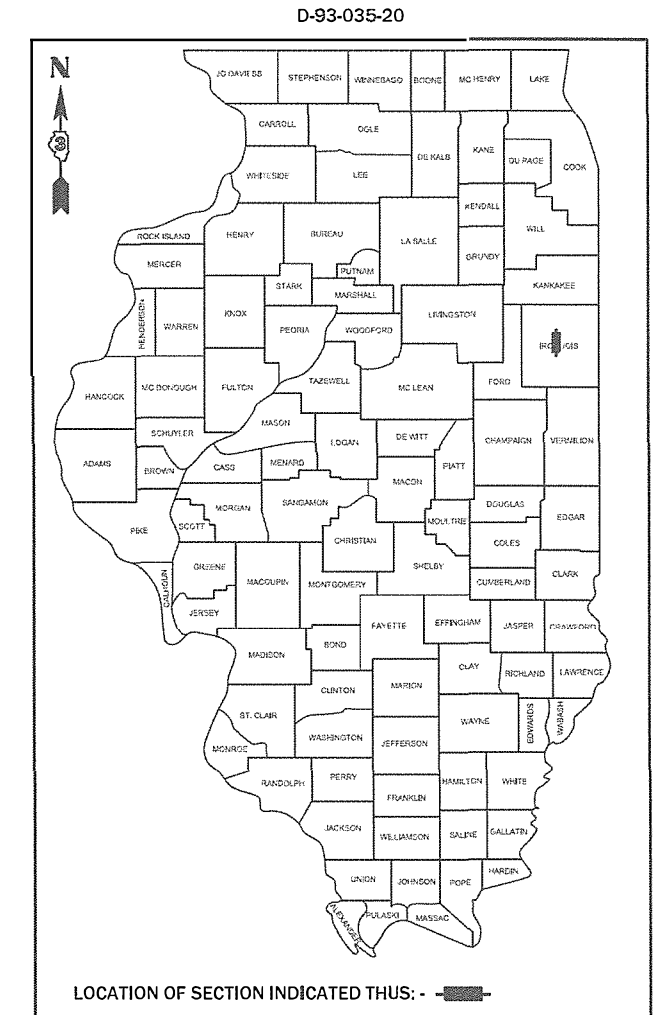
LIST OF ILLINOIS DOT HIGHWAY STANDARDS

| | |
|-----------|--|
| 000001-08 | STANDARD SYMBOLS, ABBREVIATIONS AND PATTERNS |
| 001006 | DECIMAL OF AN INCH AND OF A FOOT |
| 424001-11 | PERPENDICULAR CURB RAMPS FOR SIDEWALKS |
| 424006-05 | DIAGONAL CURB RAMPS FOR SIDEWALKS |
| 424011-04 | CORNER PARALLEL CURB RAMPS FOR SIDEWALKS |
| 424016-05 | MID BLOCK CURB RAMPS FOR SIDEWALKS |
| 424021-06 | DEPRESSED CORNER FOR SIDEWALKS |
| 424026-03 | ENTRANCE / ALLEY PEDESTRIAN CROSSINGS |
| 482011-03 | HMA SHOULDER STRIPS/SHOULDERS WITH RS OR WIDENING & RS PROJECTS |
| 542401-04 | METAL FLARED END SECTION FOR PIPE CULVERTS |
| 542406-04 | METAL FLARED END SECTION FOR PIPE ARCHES |
| 606001-07 | CONCRETE CURB TYPE B AND COMBINATION CONCRETE CURB AND GUTTER |
| 701001-02 | OFF-ROAD OPERATIONS 2L, 2W, MORE THAN 15' (4.5 m) AWAY |
| 701006-05 | OFF-ROAD OPERATIONS 2L, 2W, 15' (4.5 m) TO 24" (600 mm) FROM PAVEMENT EDGE |
| 701011-04 | OFF-ROAD MOVING OPERATIONS 2L, 2W, DAY ONLY |
| 701201-05 | LANE CLOSURE, 2L, 2W, DAY ONLY, FOR SPEEDS ≥ 45 MPH |
| 701301-04 | LANE CLOSURE, 2L, 2W, SHORT TIME OPERATIONS |
| 701306-04 | LANE CLOSURE, 2L, 2W, SLOW MOVING OPERATIONS DAY ONLY, FOR SPEEDS ≥ 45 MPH |
| 701311-03 | LANE CLOSURE, 2L, 2W, MOVING OPERATIONS - DAY ONLY |
| 701326-04 | LANE CLOSURE, 2L, 2W, PAVEMENT WIDENING, FOR SPEEDS ≥ 45 MPH |
| 701501-06 | URBAN LANE CLOSURE, 2L, 2W, UNDIVIDED |
| 701801-06 | SIDEWALK, CORNER OR CROSSWALK CLOSURE |
| 701901-08 | TRAFFIC CONTROL DEVICES |
| 780001-05 | TYPICAL PAVEMENT MARKINGS |
| 781001-04 | TYPICAL APPLICATIONS RAISED REFLECTIVE PAVEMENT MARKERS |
| 782006-01 | GUARDRAIL AND BARRIER WALL REFLECTOR MOUNTING DETAILS |

PROPOSED HIGHWAY PLANS

F.A.S. ROUTE 338 (US 45)
SECTION (33,34)RS-5,SW
PROJECT: STP-7CE0(847)
3P MILL & RESURF, ADA IMPROVEMENTS
IROQUOIS COUNTY

C-93-074-20



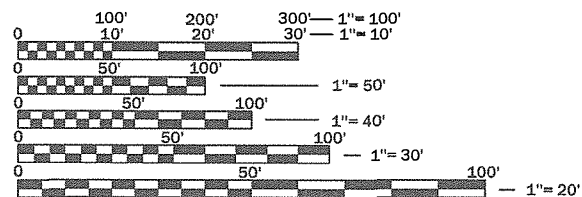
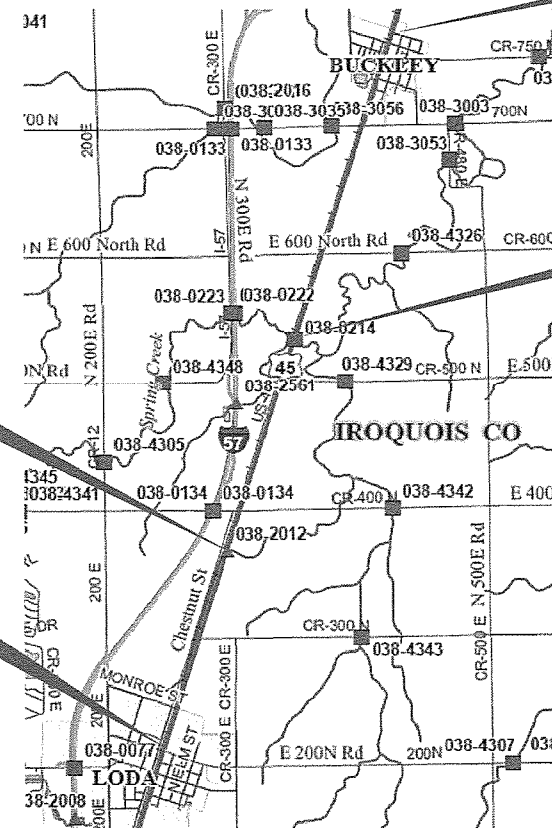
D-93-035-20

BEGIN IMPROVEMENT
STA 2012 + 16

SN 038-0214 STA 2146 + 00
OMISSION -
STA 2145 + 23 TO 2146 + 77

SN 038-2012
STA 2239 + 33

END IMPROVEMENT
STA 2325 + 08



FULL SIZE PLANS HAVE BEEN PREPARED USING STANDARD ENGINEERING SCALES. REDUCED SIZED PLANS WILL NOT CONFORM TO STANDARD SCALES. IN MAKING MEASUREMENTS ON REDUCED PLANS, THE ABOVE SCALES MAY BE USED.

J.U.L.I.E.
JOINT UTILITY LOCATION INFORMATION FOR EXCAVATION
1-800-892-0123
OR 811

PROJECT ENGINEER: JOE KANNEL, P.E.
UNIT CHIEF: MICHELE LINDEMANN, P.E.
DISTRICT 3 NO. (815) 434-6131
CONTRACT NO. 66K56

GROSS LENGTH = 31292 FT. = 5.927 MILE
NET LENGTH = 31138 FT. = 5.897 MILE

FUNCTIONAL CLASSIFICATION
RURAL MAJOR COLLECTOR
2019 ADT: 1700
PV = 88.2% SU = 5.3% MU = 6.5%

STATE OF ILLINOIS
DEPARTMENT OF TRANSPORTATION

SUBMITTED Dec 09, 2020
[Signature] REGIONAL ENGINEER

January 29, 2021
[Signature] ENGINEER OF DESIGN AND ENVIRONMENT

January 29, 2021
[Signature] DIRECTOR OF HIGHWAYS PROJECT IMPLEMENTATION 13

PRINTED BY THE AUTHORITY
OF THE STATE OF ILLINOIS

GENERAL NOTES

THE HMA SURFACE OF ALL MAILBOX TURNOUTS, PRIVATE ENTRANCES, COMMERCIAL ENTRANCES, AND SIDE ROADS SHALL BE MADE NEATLY, IN A WORKMANLIKE MANNER, AND SHALL ACCURATELY CONFORM TO THE SHAPES AND DIMENSIONS SHOWN ON THE PLAN DETAILS. IF REQUIRED BY THE ENGINEER, THE CONTRACTOR SHALL SAW CUT THE HMA SURFACE TO CONFORM TO THE SHAPES AND DIMENSIONS SHOWN ON THE PLAN DETAILS. THIS WORK WILL BE INCLUDED IN THE COST OF THE HMA SURFACE.

THE ENGINEER WILL BE THE SOLE JUDGE CONCERNING CURING TIME FOR THE VARIOUS HMA LIFTS.

THE FINISHED EARTHWORK SHALL HAVE A VEGETATION SUSTAINING SOIL COVERING THE TOP FOUR INCHES (100 MILLIMETERS) IN AREAS TO BE SEEDED OR SODDED. THE VEGETATION SUSTAINING SOIL REQUIRED WILL NOT BE PAID FOR SEPARATELY BUT WILL BE INCLUDED IN THE COST OF SIDEWALK PAY ITEMS

ON EXISTING PAVEMENT WHICH MAY BE SUPERELEVATED, THE NEW HMA PAVEMENT SHALL BE BUILT WITH THE SAME SUPERELEVATION UNLESS NEW SUPERELEVATION RATES ARE GIVEN ON THE PLANS.

ALL ELEVATIONS REFERRING TO U.S.G.S. MEAN SEA LEVEL DATUM.

THE FOLLOWING RATES OF APPLICATION HAVE BEEN USED IN CALCULATING PLAN QUANTITIES:

| | | |
|------------------------------|--------|---------------------------|
| GRANULAR MATERIALS | 2.05 | TONS / CU YD |
| HMA RESURFACING | 112 | LBS / SQ YD / IN |
| SHORT TERM PAVEMENT MARKING | 10 | FT /100 FT OF APPLICATION |
| MIX FOR CRACKS, JTS & FLGWYS | 0.0003 | TONS / SQ YD |
| LEVEL BINDER (HAND METHOD) | 0.0005 | TONS / SQ YD |

THE CONTRACTOR'S ATTENTION IS DIRECTED TO THE PRESENCE OF DEPARTMENT-OWNED UNDERGROUND ELECTRICAL CABLE WITHIN THE LIMITS OF THE PROPOSED IMPROVEMENT. THE CONTRACTOR SHALL REQUEST THE ILLINOIS DEPARTMENT OF TRANSPORTATION IN OTTAWA (815-434-8417) TO LOCATE THE UNDERGROUND FACILITIES, PROVIDING A MINIMUM OF 72 HOURS NOTICE. THE DEPARTMENT IS NOT A MEMBER OF THE JOINT UTILITY LOCATING INFORMATION FOR EXCAVATORS (JULIE) SYSTEM.

ALL DAMAGE TO DEPARTMENT OWNED UNDERGROUND FACILITIES, CAUSED BY THE CONTRACTOR SHALL BE REPAIRED TO THE SATISFACTION OF THE ENGINEER AND AT NO EXPENSE TO THE DEPARTMENT. THIS SHALL INCLUDE ALL TEMPORARY REPAIRS REQUIRED TO KEEP THE FACILITY OPERATIONAL WHILE MATERIAL IS BEING OBTAINED TO MAKE PERMANENT REPAIRS. SPLICING OF ELECTRIC CABLE WILL NOT BE ALLOWED. ELECTRIC CABLE SHALL BE REPLACED FROM POLE TO POLE OR CONTROLLER.

THE WORK REQUIRED TO CONNECT ANY SEWER TO AN EXISTING DRAINAGE STRUCTURE OR PIPE WILL NOT BE PAID FOR SEPARATELY, BUT WILL BE CONSIDERED AS INCLUDED IN THE CONTRACT UNIT PRICE BID FOR THE SEWER ITEMS.

MEMBERS OF JULIE KNOWN TO BE WITHIN THE LIMITS OF THE IMPROVEMENT ARE: AMEREN ELECTRIC, FRONTIER, NICOR METRO COMMUNICATIONS, WINDSTREAM, AND BUCKLEY

COMMITMENT

| HMA MIXTURE REQUIREMENT TABLE | | | |
|--|----------------|----------------|--------------------------|
| LOCATIONS: | ENTIRE PROJECT | ENTIRE PROJECT | ENTIRE PROJECT |
| MIXTURE USE(S): | HMA BINDER | HMA SURFACE | INCIDENTAL HMA |
| BINDER GRADE (PG): | PG64-22 | PG64-22 | PG64-22 |
| DESIGN AIR VOIDS: | 4.0% @ N50 | 4.0% @ N50 | 4.0% @ N50 |
| MIXTURE COMPOSITION: (MIXTURE GRADATION) | IL 9.5 | IL 9.5 | IL 9.5 |
| FRICTION AGGREGATE: | | MIXTURE C | |
| MIXTURE WEIGHT: | 112.0 LB/SY/IN | 112.0 LB/SY/IN | 112.0 LB/SY/IN |
| QUALITY MANAGEMENT PROGRAM: | QCP | QCP | NA |
| SUBLOT SIZE: | 1000 TONS | 1000 TONS | NA |
| DENSITY TEST METHOD: | CORES | CORES | SATISFACTION OF ENGINEER |

STATE OF ILLINOIS
DEPARTMENT OF TRANSPORTATION
DISTRICT THREE
AS BUILT INFORMATION

STATE OF ILLINOIS
DEPARTMENT OF TRANSPORTATION
DISTRICT THREE

SUPERVISING CONSTRUCTION FIELD ENGINEER

PREPARED BY: _____
DISTRICT STUDIES & PLANS ENGINEER

RESIDENT ENGINEER / TECHNICIAN

DATE: _____

START & END DATES
OF CONSTRUCTION:

INSPECTORS:

EXAMINED BY: _____
DISTRICT CONSTRUCTION ENGINEER

DISTRICT MATERIALS ENGINEER

DISTRICT OPERATIONS ENGINEER

| | | | |
|--|-----------------------------|------------|-----------|
| FILE NAME = | USER NAME = corcoranlm | DESIGNED - | REVISED - |
| pw:\planroom\dot\illinois\gov\PWIDOT\Documents\DOT Offices\District 3\Projects\D366K56\CADData\CADsheets\D366K56 | | DRAWN - | REVISED - |
| Default | PLOT SCALE = 100,0000' /In. | CHECKED - | REVISED - |
| | PLOT DATE = 12/7/2020 | DATE - | REVISED - |

**STATE OF ILLINOIS
DEPARTMENT OF TRANSPORTATION**

GERNERAL NOTES

SCALE: SHEET OF SHEETS STA. TO STA.

| | | | | |
|--------------------|----------------|------------------|--------------|-----------|
| F.A.S. RTE. | SECTION | COUNTY | TOTAL SHEETS | SHEET NO. |
| 338 | (33,34)RS-5,SW | IROQUOIS | 23 | 2 |
| CONTRACT NO. 66K56 | | | | |
| ILLINOIS | | FED. AID PROJECT | | |

MODEL: Default
 FILE: Model: P:\pub\baronm.dwg
 PROJECT: D:\Projects\366K56\CADD\Drawings\DOT Office\Drawings\366K56\366K56-11-500.dwg

| CONSTRUCTION CODE | |
|-------------------------|------------------------------|
| 80% FED 20% ST | 80% FED 20% VIL ADA RAMPS |
| ROADWAY 0005 NONE | ROADWAY 0021 NONE |

| CODE NO. | ITEM | UNIT | TOTAL QUANTITY | ROADWAY 0005 NONE | ROADWAY 0021 NONE |
|------------|--|-------|----------------|-------------------------|-------------------------|
| 40200800 | AGGREGATE SURFACE COURSE, TYPE B | TON | 24 | 24 | |
| 40600275 | BITUMINOUS MATERIALS (PRIME COAT) | POUND | 626 | 626 | |
| 40600290 | BITUMINOUS MATERIALS (TACK COAT) | POUND | 60614 | 60614 | |
| 40600400 | MIXTURE FOR CRACKS, JOINTS, AND FLANGEWAYS | TON | 26 | 26 | |
| 40600900 | HOT-MIX ASPHALT BINDER COURSE (HAND METHOD), N50 | TON | 43 | 43 | |
| 40600990 | TEMPORARY RAMP | SQ YD | 395 | 395 | |
| 40602978 | HOT-MIX ASPHALT BINDER COURSE, IL- 9.5, N50 | TON | 10672 | 10672 | |
| 40604050 | HOT-MIX ASPHALT SURFACE COURSE, IL-9.5, MIX "C", N50 | TON | 9004 | 9004 | |
| 40800050 | INCIDENTAL HOT-MIX ASPHALT SURFACING | TON | 391 | 391 | |
| 42400100 | PORTLAND CEMENT CONCRETE SIDEWALK 4 INCH | SQ FT | 1960 | 612 | 1348 |
| * 42400800 | DETECTABLE WARNINGS | SQ FT | 151 | 62 | 89 |
| 44000100 | PAVEMENT REMOVAL | SQ YD | 18 | | 18 |
| 44000164 | HOT-MIX ASPHALT SURFACE REMOVAL, 3 3/4" | SQ YD | 77968 | 77968 | |
| 44000500 | COMBINATION CURB AND GUTTER REMOVAL | FOOT | 211 | 88 | 123 |

*= SPECIALTY ITEM

| | | |
|-------------------------------|------------|-----------|
| USER NAME = corcoranlm | DESIGNED - | REVISED - |
| | DRAWN - | REVISED - |
| PLOT SCALE = 100.0000 ' / in. | CHECKED - | REVISED - |
| PLOT DATE = 12/7/2020 | DATE - | REVISED - |

**STATE OF ILLINOIS
DEPARTMENT OF TRANSPORTATION**

SUMMARY OF QUANTITIES

SCALE: SHEET OF SHEETS STA. TO STA.

| | | | | |
|---------------------------|----------------|----------|--------------------|-----------|
| F.A.S. RTE. | SECTION | COUNTY | TOTAL SHEETS | SHEET NO. |
| 338 | (33,34)RS-5,5W | IROQUOIS | 23 | 3 |
| ILLINOIS FED. AID PROJECT | | | CONTRACT NO. 66K56 | |

| CONSTRUCTION CODE | |
|-------------------------|------------------------------|
| 80% FED 20% ST | 80% FED 20% VIL ADA RAMPS |
| ROADWAY 0005 NONE | ROADWAY 0021 NONE |

| CODE NO. | ITEM | UNIT | TOTAL QUANTITY | ROADWAY 0005 NONE | ROADWAY 0021 NONE |
|------------|--|--------|----------------|-------------------------|-------------------------|
| 44000600 | SIDEWALK REMOVAL | SQ FT | 1582 | 474 | 1108 |
| 50900805 | PEDESTRIAN RAILING | FOOT | 24 | | 24 |
| 54262715 | METAL FLARED END SECTIONS 15" | EACH | 2 | 2 | |
| 54262824 | METAL FLARED END SECTIONS, EQUIVALENT ROUND-SIZE 24" | EACH | 2 | 2 | |
| 56109210 | WATER VALVES TO BE ADJUSTED | EACH | 1 | | 1 |
| 60260100 | INLETS TO BE ADJUSTED | EACH | 5 | 3 | 2 |
| 60500305 | FILLING INLETS | EACH | 2 | 2 | |
| 60603800 | COMBINATION CONCRETE CURB AND GUTTER, TYPE B-6.12 | FOOT | 211 | 88 | 123 |
| * 66900105 | UNDERGROUND STORAGE TANK REMOVAL | EACH | 1 | 1 | |
| * 66900200 | NON-SPECIAL WASTE DISPOSAL | CU YD | 45 | 45 | |
| * 66900530 | SOIL DISPOSAL ANALYSIS | EACH | 4 | 4 | |
| * 66901001 | REGULATED SUBSTANCES PRE-CONSTRUCTION PLAN | LSUM | 1 | 1 | |
| * 66901003 | REGULATED SUBSTANCES FINAL CONSTRUCTION REPORT | LSUM | 1 | 1 | |
| * 66901006 | REGULATED SUBSTANCES MONITORING | CAL DA | 7 | 7 | |

*= SPECIALTY ITEM

MODEL: Default
 FILE: \\blm1c2.pva\pub\lancorn.dwg
 I:\projects\66K56\CADD\Drawings\DOT Office\Drawings\66K56\66K56-11-500.dgn

| | | | | | | | | | | | | |
|------------------------------|------------|-----------|---|------------------------------|----------------|----------|--------|--------------------|---------|--------|-----------------|------------------|
| USER NAME = corcoranlm | DESIGNED - | REVISED - | STATE OF ILLINOIS DEPARTMENT OF TRANSPORTATION | SUMMARY OF QUANTITIES | | | | F.A.S. RTE. | SECTION | COUNTY | TOTAL SHEETS | SHEET NO. |
| PLOT SCALE = 100.0000' / in. | DRAWN - | REVISED - | | 338 | (33,34)RS-5,SW | IROQUOIS | 23 | 4 | | | | |
| PLOT DATE = 12/8/2020 | CHECKED - | REVISED - | | | | | | CONTRACT NO. 66K56 | | | | |
| | DATE - | REVISED - | | SCALE: | SHEET | OF | SHEETS | STA. | TO | STA. | ILLINOIS | FED. AID PROJECT |

| CONSTRUCTION CODE | |
|-------------------------|------------------------------|
| 80% FED 20% ST | 80% FED 20% VIL ADA RAMPS |
| ROADWAY 0005 NONE | ROADWAY 0021 NONE |

| CODE NO. | ITEM | UNIT | TOTAL QUANTITY | ROADWAY 0005 NONE | ROADWAY 0021 NONE |
|------------|--|--------|----------------|-------------------|-------------------|
| 67000400 | ENGINEER'S FIELD OFFICE, TYPE A | CAL MO | 4 | 4 | |
| 67100100 | MOBILIZATION | L SUM | 1 | 1 | |
| 70100455 | TRAFFIC CONTROL AND PROTECTION, STANDARD 701206 | L SUM | 1 | 1 | |
| 70100460 | TRAFFIC CONTROL AND PROTECTION, STANDARD 701306 | L SUM | 1 | 1 | |
| 70100500 | TRAFFIC CONTROL AND PROTECTION, STANDARD 701326 | L SUM | 1 | 1 | |
| 70102620 | TRAFFIC CONTROL AND PROTECTION, STANDARD 701501 | L SUM | 1 | 1 | |
| 70102640 | TRAFFIC CONTROL AND PROTECTION, STANDARD 701801 | L SUM | 1 | 1 | |
| 70300100 | SHORT TERM PAVEMENT MARKING | FOOT | 9387 | 9387 | |
| 70300150 | SHORT TERM PAVEMENT MARKING REMOVAL | SQ FT | 1042 | 1042 | |
| * 78001110 | PAINT PAVEMENT MARKING - LINE 4" | FOOT | 124654 | 124654 | |
| * 78001130 | PAINT PAVEMENT MARKING - LINE 6" | FOOT | 15649 | 15649 | |
| * 78003130 | PREFORMED PLASTIC PAVEMENT MARKING, TYPE B - LINE 6" | FOOT | 220 | 220 | |
| * 78100100 | RAISED REFLECTIVE PAVEMENT MARKER | EACH | 401 | 401 | |
| * 78200005 | GUARDRAIL REFLECTORS, TYPE A | EACH | 14 | 14 | |
| 78300200 | RAISED REFLECTIVE PAVEMENT MARKER REMOVAL | EACH | 401 | 401 | |
| X0320050 | CONSTRUCTION LAYOUT (SPECIAL) | L SUM | 1 | 1 | |
| X0327809 | LINEAR DELINEATOR PANELS, 4 INCH | EACH | 10 | 10 | |

*= SPECIALTY ITEM

MODEL: Default
 FILE NAME: P:\p12100001\Documents\DOT - Office\District 3\Project\0326656\0326656-01-500.dgn

| | | |
|------------------------------|------------|-----------|
| USER NAME = corcoranlm | DESIGNED - | REVISED - |
| | DRAWN - | REVISED - |
| PLOT SCALE = 100.0000' / in. | CHECKED - | REVISED - |
| PLOT DATE = 12/11/2020 | DATE - | REVISED - |

**STATE OF ILLINOIS
DEPARTMENT OF TRANSPORTATION**

SUMMARY OF QUANTITIES

SCALE: SHEET OF SHEETS STA. TO STA.

| F.A.S. RTE. | SECTION | COUNTY | TOTAL SHEETS | SHEET NO. |
|---------------------------|----------------|----------|--------------------|-----------|
| 338 | (33,34)R5-5,SW | IROQUOIS | 23 | 5 |
| ILLINOIS FED. AID PROJECT | | | CONTRACT NO. 66K56 | |

MODEL: Default
 FILE: Model: P:\pub\barcom.dwg
 PROJECT: I:\projects\36656\CADDData\CAD\sheet\36656-11-500.dgn

| CONSTRUCTION CODE | |
|-------------------|------------------------------|
| 80% FED 20% ST | 80% FED 20% VIL ADA RAMPS |

| CODE NO. | ITEM | UNIT | TOTAL QUANTITY | ROADWAY | |
|------------|---|-------|----------------|--------------|--------------|
| | | | | 0005 NONE | 0021 NONE |
| X080001 | SHOULDER REMOVAL (SPECIAL) | SQ YD | 6498 | 6498 | |
| X2140100 | GRADING AND SHAPING DITCHES, SPECIAL | FOOT | 738 | 738 | |
| X4401198 | HOT-MIX ASPHALT SURFACE REMOVAL, VARIABLE DEPTH | SQ YD | 1673 | 1673 | |
| X5430101 | INSERTION CULVERT LINER (SPECIAL), LOCATION 1 | FOOT | 38 | 38 | |
| X5430102 | INSERTION CULVERT LINER (SPECIAL), LOCATION 2 | FOOT | 38 | 38 | |
| X6030310 | FRAMES AND LIDS TO BE ADJUSTED (SPECIAL) | EACH | 2 | 2 | |
| * X7830074 | GROOVING FOR RECESSED PAVEMENT MARKING 7" | FOOT | 220 | 220 | |
| Z0004542 | HOT-MIX ASPHALT REMOVAL (SPECIAL) | SQ YD | 8626 | 8626 | |
| Z0005300 | BOX CULVERTS TO BE CLEANED | EACH | 2 | 2 | |
| Z0015500 | DEBRIS REMOVAL | L SUM | 1 | 1 | |
| Z0021700 | EXPANSION JOINT REHABILITATION | FOOT | 48 | 48 | |
| Z0030850 | TEMPORARY INFORMATION SIGNING | SQ FT | 42 | 42 | |
| Z0033700 | LONGITUDINAL JOINT SEALANT | FOOT | 34938 | 34938 | |
| Z0034105 | MATERIAL TRANSFER DEVICE | TON | 19676 | 19676 | |
| Z0048665 | RAILROAD PROTECTIVE LIABILITY INSURANCE | L SUM | 1 | 1 | |

*= SPECIALTY ITEM

| | | | | | | | | | | | | |
|-------------------------------|------------|-----------|---|------------------------------|----------------|----------|--------|--------------------|---------|--------|---------------------------|-----------|
| USER NAME = corcoranm | DESIGNED - | REVISED - | STATE OF ILLINOIS DEPARTMENT OF TRANSPORTATION | SUMMARY OF QUANTITIES | | | | F.A.S. RTE. | SECTION | COUNTY | TOTAL SHEETS | SHEET NO. |
| PLOT SCALE = 100.0000 ' / in. | DRAWN - | REVISED - | | 338 | (33,34)RS-5,5W | IROQUOIS | 23 | 6 | | | | |
| PLOT DATE = 12/8/2020 | CHECKED - | REVISED - | | | | | | CONTRACT NO. 66K56 | | | | |
| | DATE - | REVISED - | | SCALE: | SHEET | OF | SHEETS | STA. | TO | STA. | ILLINOIS FED. AID PROJECT | |

| MAINLINE SCHEDULE | | | | | | | | | | | | |
|--|--------|------------|---------------------|-----------------------|----------------|---------------|-----------------|--------------------|------------|---------------------|---------------------------------|-----------------|
| LOCATION | LENGTH | PVMT WIDTH | HMA SURF REM 3-3/4" | HMA SURF REM, SPECIAL | HMA BINDER | HMA SURF CSE | LONG JOINT SEAL | SHLDR REM, SPECIAL | TEMP RAMP | BIT MAT (TACK COAT) | MIX FOR CRACKS, JOINTS & FLGWYS | HMA BINDER (HM) |
| | FOOT | FOOT | SQ YD | SQ YD | TON | TON | FOOT | SQ YD | SQ YD | POUND | TON | TON |
| 2012+16 - 2015+50 | 334 | 24 | 891 | | 116.4 | 94.6 | 334 | 74 | 24 | 618.1 | 0.3 | 0.4 |
| 2015+50 - 2017+50 | 200 | 24-40 | | 711 | 64.7 | 59.7 | 600 | | | 479.9 | 0.2 | 0.4 |
| 2017+50 - 2033+50 | 1600 | 24 | | 4267 | 388.3 | 358.4 | 4800 | | | 2880.2 | 1.3 | 2.1 |
| 2033+50 - 2034+50 | 100 | 38-24 | | 344 | 31.3 | 28.9 | 300 | | | 232.2 | 0.1 | 0.2 |
| 2034+50 - 2037+03 | 253 | 24 | 675 | | 88.1 | 71.6 | 253 | 56 | | 468.2 | 0.2 | 0.3 |
| 2037+03 - 2053+05 | 1602 | 24 | 4272 | | 558.2 | 453.5 | 1602 | 356 | | 2963.7 | 1.3 | 2.1 |
| 2053+05 - 2109+02 | 5597 | 24 | 14925 | | 1950.3 | 1584.6 | 5597 | 1244 | | 10354.3 | 4.5 | 7.5 |
| 2109+02 - 2145+23 | 3621 | 24 | 9656 | | 1261.8 | 1025.2 | 3621 | 805 | 33 | 6698.9 | 2.9 | 4.8 |
| 2145+23 - 2146+77 (OMISSION SN 038-0214) | 154 | | | | | | | | | | | |
| 2146+77 - 2164+46 | 1769 | 24 | 4717 | | 616.3 | 500.8 | 1769 | 393 | 33 | 3272.4 | 1.4 | 2.4 |
| 2164+46 - 2220+96 | 5650 | 24 | 15067 | | 1968.8 | 1599.7 | 5650 | 1256 | | 10452.8 | 4.5 | 7.5 |
| 2220+96 - 2242+21 | 2125 | 24 | 5667 | | 740.4 | 601.6 | 2125 | 472 | | 3931.4 | 1.7 | 2.8 |
| 2242+21 - 2276+40 | 3419 | 24 | 9117 | | 1191.3 | 967.9 | 3419 | 760 | | 6325 | 2.7 | 4.6 |
| 2276+40 - 2325+08 | 4868 | 24 | 12981 | | 1696.2 | 1378.2 | 4868 | 1082 | 33 | 9005.6 | 3.9 | 6.5 |
| PARKING LANES: | | | | | | | | | | | | |
| 2017+50 - 2033+50, LT | 1600 | 7 | | 1422 | | 139.4 | | | | 959.9 | 0.4 | 0.7 |
| 2017+50 - 2033+50, RT | 1600 | 7 | | 1422 | | 139.4 | | | | 959.9 | 0.4 | 0.7 |
| TOTAL | | | 77968 | 8166 | 10672.1 | 9003.5 | 34938 | 6498 | 123 | 59602.5 | 25.8 | 43 |

| DRAINAGE SCHEDULE | | | | | | | | | | |
|------------------------|------------------|------------------------------|---------------------------|-------------------------------|------------------|---------------------|-----------------------------------|-----------------------------------|---------------------------|---------------------------|
| LOCATION | STRUCTURE NUMBER | DESCRIPTION | BOX CULVERT TO BE CLEANED | GRADING & SHAPING DITCHES SPL | DEBRIS REM L SUM | FILLING INLETS EACH | INSERTION CULVERT LINER SPL LOC 1 | INSERTION CULVERT LINER SPL LOC 2 | METAL FLARED END SECT 15" | METAL FLARED END SECT 24" |
| | | | EACH | FOOT | | | FOOT | FOOT | EACH | EACH |
| 2015+50, LT | | INLET | | | | 1 | | | | |
| 2015+50, RT | | INLET | | | | 1 | | | | |
| 2103+22 | CULVERT #136 | EXIST 3' X 2' X 38' CONC BOX | | 10 | | | 38 | | 2 | |
| 2146+00, LT | 038-0214 | AT NE SHLD DRAIN OUTLET | | 50 | | | | | | |
| 2146+00, RT | 038-0214 | AT SW SHLD DRAIN OUTLET | | 50 | | | | | | |
| 2221+20 TO 2221+50, LT | | | | 30 | | | | | | |
| 2221+50 | CULVERT #134 | EXIST 3' X 2' X 38' CONC BOX | | 10 | | | | 38 | | 2 |
| 2239+33 | 038-2012 | | | | 1 | | | | | |
| 2254+00 TO 2255+00, LT | | | | 100 | | | | | | |
| 2255+00 | CULVERT #133 | 3'X8' BOX, 38' LONG | 1 | 19 | | | | | | |
| 2259+50 TO 2261+00, LT | | | | 150 | | | | | | |
| 2269+00 TO 2270+50, LT | | | | 150 | | | | | | |
| 2271+90 TO 2273+40, LT | | | | 150 | | | | | | |
| 2273+41 | CULVERT #132 | 3'X8' BOX, 38' LONG | 1 | 19 | | | | | | |
| TOTAL | | | 2 | 738 | 1 | 2 | 38 | 38 | 2 | 2 |

MODEL: Default
 FILE: Mainline_Planplanroom.dwg
 PROJECT: 03865656-CADData\CAD\Sheet\03865656-Plan-Schedule.dgn

| | | |
|------------------------------|------------|-----------|
| USER NAME = corcoranlm | DESIGNED - | REVISED - |
| | DRAWN - | REVISED - |
| PLOT SCALE = 100,0000' / in. | CHECKED - | REVISED - |
| PLOT DATE = 12/7/2020 | DATE - | REVISED - |

STATE OF ILLINOIS
DEPARTMENT OF TRANSPORTATION

SCHEDULES

SCALE: SHEET OF SHEETS STA. TO STA.

| F.A.P. RTE. | SECTION | COUNTY | TOTAL SHEETS | SHEET NO. |
|---------------------------|----------------|----------|--------------|-----------|
| 338 | (33,34)RS-5,SW | IROQUOIS | 23 | 8 |
| CONTRACT NO. 66K56 | | | | |
| ILLINOIS FED. AID PROJECT | | | | |

SIDERoadS AND ENTRANCES

| STATION | SIDE | TYPE | ENTRANCE | WIDTH | OFFSET FROM EOP OR PARK LN | AREA | HMA SURF REM, SPL | HMA SURF REM - VAR DEPTH | INC HMA SURF | BIT MAT (TACK CT) | BIT MAT (PR CT) | AGG SURF CSE | TEMP RAMP |
|---------------|------|---------|---------------|-------|----------------------------|-------|-------------------|--------------------------|--------------|-------------------|-----------------|--------------|--------------|
| | | | | FOOT | FOOT | SQ YD | SQ YD | SQ YD | TON | POUND | POUND | TON | SQ YD |
| 2012+43 | LT | HMA | CENTENNIAL ST | 24 | 30 | 122.9 | | 8.9 | 19.6 | 55.3 | | | 13.0 |
| 2017+15 | RT | HMA | MAIN ST | 25 | 30 | 93.5 | 93.5 | | 11.6 | 42.1 | | | 14.0 |
| 2017+15 | LT | HMA | MAIN ST | 30 | 8 | 31.4 | 31.4 | | 3.8 | 14.1 | | | 17.0 |
| 2021+81 | LT | HMA | CENTRAL ST | 28 | 5 | 20.3 | 20.3 | | 2.5 | 9.1 | | | 16.0 |
| 2026+54 | RT | HMA | LINCOLN ST | 30 | 30 | 104.8 | 104.8 | | 13.0 | 47.2 | | | 17.0 |
| 2026+54 | LT | HMA | LINCOLN ST | 35 | 8 | 34.4 | 34.4 | | 4.2 | 15.5 | | | 19.0 |
| 2032+28 | LT | HMA | ELM ST | 18 | 25 | 65.5 | 65.5 | | 8.2 | 29.5 | | | 10.0 |
| 2037+03 | LT | HMA | BLANE ST | 20 | 30 | 109.6 | 109.6 | | 13.7 | 49.3 | | | 11.0 |
| 2039+38 | LT | AGG/HMA | PE | 15 | 10 | 27.8 | | 8.9 | 4.5 | 4.0 | 42.5 | | |
| 2039+95 | LT | AGG/HMA | PE | 15 | 10 | 27.8 | | 8.9 | 4.5 | 4.0 | 42.5 | | |
| 2042+39 | LT | AGG/HMA | PE | 15 | 10 | 27.8 | | 8.9 | 4.5 | 4.0 | 42.5 | | |
| 2044+53 | LT | HMA | PE | 13 | 10 | 25.6 | | 25.6 | 4.1 | 11.5 | | | |
| 2045+89 | LT | AGG/HMA | PE | 10 | 10 | 16.7 | | 7.6 | 2.7 | 3.4 | 20.5 | | |
| 2048+48 | LT | AGG/HMA | PE | 13 | 10 | 25.6 | | 12.4 | 4.1 | 5.6 | 29.7 | | |
| 2051+41 | LT | AGG/HMA | PE | 32 | 10 | 46.7 | | 19.3 | 7.4 | 8.7 | 61.7 | | |
| 2053+05 | RT | HMA | E 700 N RD | 22 | 30 | 116.2 | | 116.2 | 18.9 | 52.3 | | | 14.0 |
| 2053+05 | LT | HMA | E 700 N RD | 36 | 30 | 206.1 | | 206.1 | 33.1 | 92.7 | | | 23.0 |
| 2065+76 | LT | AGG | FE | 7 | 10 | 13.3 | | | | | | 2.4 | |
| 2085+95 | RT | AGG | PE | 30 | 10 | 44.4 | | | 7.0 | | 99.9 | | |
| 2086+56 | RT | HMA | MBTO | 15 | 5 | 20.8 | | 20.8 | 3.9 | 9.4 | | | |
| 2087+16 | LT | AGG/HMA | PE | 23 | 10 | 36.7 | | 14.7 | 5.9 | 6.6 | 49.5 | | |
| 2109+02 | RT | HMA | E 600 N RD | 15 | 30 | 92.9 | | 92.9 | 15.3 | 41.8 | | | 10.0 |
| 2109+02 | LT | HMA | E 600 N RD | 20 | 30 | 109.6 | | 109.6 | 17.9 | 49.3 | | | 13.0 |
| 2112+87 | LT | HMA | PE | 20 | 10 | 33.3 | | 33.3 | 5.3 | 15.0 | | | |
| 2136+72 | RT | HMA | MBTO | 20 | 5 | 25.0 | | 25.0 | 4.6 | 11.3 | | | |
| 2136+97 | LT | HMA | PE | 24 | 10 | 37.8 | | 37.8 | 6.0 | 17.0 | | | |
| 2161+84 | RT | HMA | PE & MBTO | 18 | 10 | 66.7 | | 66.7 | 10.7 | 30.0 | | | |
| 2162+00 | LT | HMA | PE | 37 | 10 | 63.3 | | 63.3 | 10.0 | 28.5 | | | |
| 2164+46 | LT | HMA | E 500 N RD | 28 | 30 | 136.2 | | 136.2 | 22.0 | 61.3 | | | 18.0 |
| 2165+10 | RT | HMA | PE | 22 | 10 | 35.6 | | 35.6 | 5.7 | 16.0 | | | |
| 2192+56 | LT | AGG | FE | 20 | 10 | 27.8 | | | | | | 4.7 | |
| 2220+96 | RT | HMA | E 400 N RD | 25 | 30 | 126.2 | | 126.2 | 20.5 | 56.8 | | | 16.0 |
| 2220+96 | LT | HMA | E 400 N RD | 22 | 30 | 116.2 | | 116.2 | 18.9 | 52.3 | | | 14.0 |
| 2242+21 | LT | HMA | E 360 N RD | 36 | 30 | 162.9 | | 162.9 | 26.2 | 73.3 | | | 23.0 |
| 2246+73 | LT | AGG | PE | 45 | 10 | 50.0 | | | 7.9 | | 112.5 | 7.8 | |
| 2247+54 | LT | AGG | PE | 50 | 10 | 55.6 | | | 8.7 | | 125.1 | 8.7 | |
| 2276+40 | RT | HMA | E 300 N RD | 17 | 30 | 99.6 | | 99.6 | 16.3 | 44.8 | | | 11.0 |
| 2276+40 | LT | HMA | E 300 N RD | 20 | 30 | 109.6 | | 109.6 | 17.9 | 49.3 | | | 13.0 |
| TOTALS | | | | | | | 459.5 | 1673.2 | 391.1 | 1011.0 | 626.4 | 23.6 | 272.0 |

MODEL: Default
 FILE: h:\m\c_2014\planroom.dwg
 PROJECT: 036656\CAD\DATA\CAD\sheet\036656-RT-Schedule.dgn

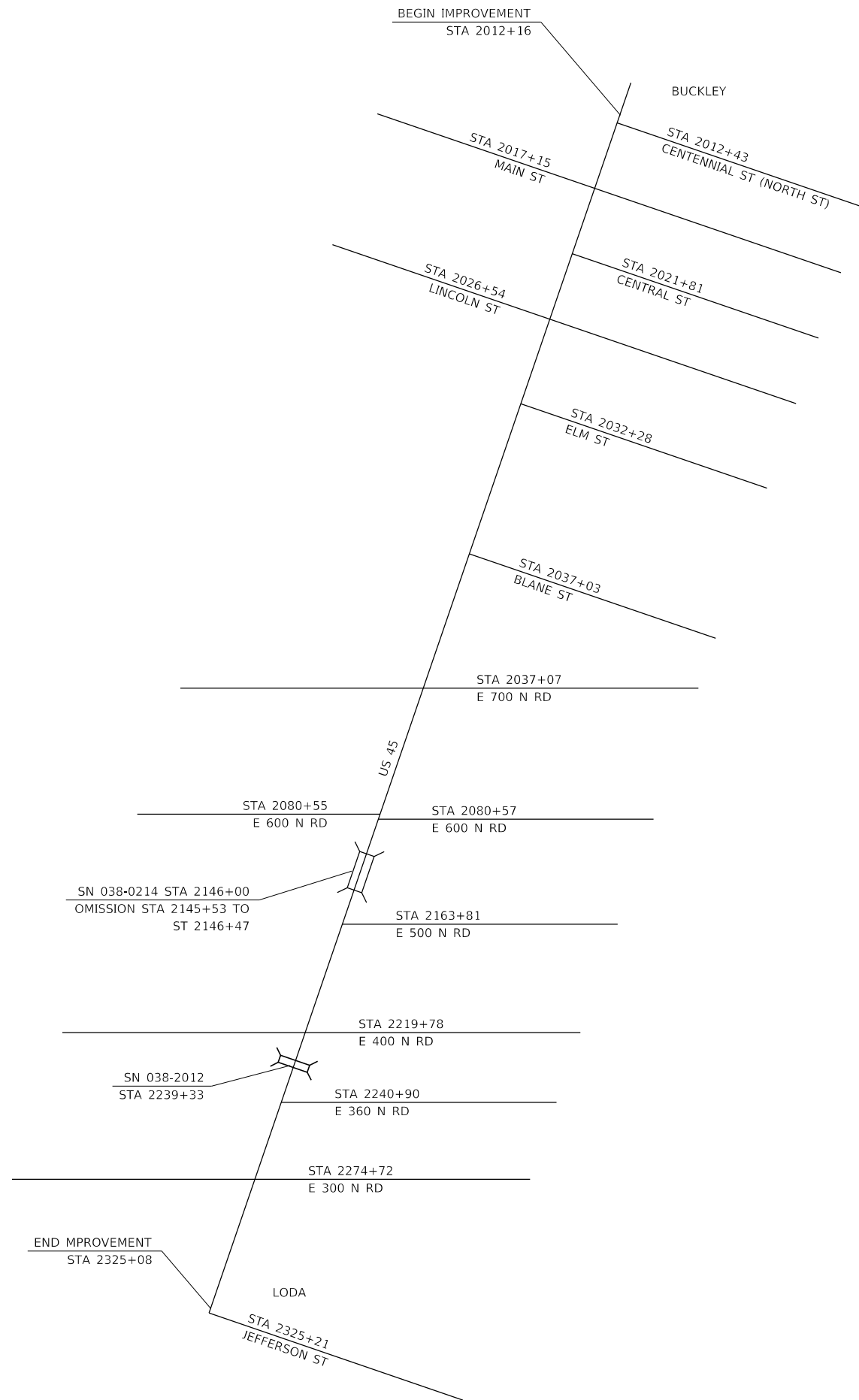
| | | |
|-------------------------------|------------|-----------|
| USER NAME = corcoranm | DESIGNED - | REVISED - |
| | DRAWN - | REVISED - |
| PLOT SCALE = 100.0000 ' / in. | CHECKED - | REVISED - |
| PLOT DATE = 12/7/2020 | DATE - | REVISED - |

**STATE OF ILLINOIS
DEPARTMENT OF TRANSPORTATION**

SCHEDULES

SCALE: SHEET OF SHEETS STA. TO STA.

| | | | | |
|---------------------------|----------------|----------|--------------|-----------|
| F.A.P. RTE. | SECTION | COUNTY | TOTAL SHEETS | SHEET NO. |
| 338 | (33,34)RS-5,SW | IROQUOIS | 23 | 9 |
| CONTRACT NO. 66K56 | | | | |
| ILLINOIS FED. AID PROJECT | | | | |



| MONUMENT NUMBER | DESCRIPTION | APPROXIMATE LOCATION | EXISTING MONUMENT TYPE | PROPOSED MONUMENT TYPE | MONUMENT RECORD TO BE RECORDED | RESPONSIBILITY |
|-----------------|---|----------------------|------------------------|------------------------|--------------------------------|----------------|
| N/A | NO PERMANENT SURVEY MARKERS OR SECTION CORNER MARKERS TO BE SET ON THIS JOB | N/A | N/A | N/A | N/A | N/A |

NO KNOWN SURVEY OR CENTERLINE CONTROL MONUMENTS ARE ON THE ROAD SURFACE THAT WILL BE DISTURBED BY THE RESURFACING. UNKNOWN MONUMENTS MAY EXIST. R.E. MUST TIE AND REQUEST PLATS AND PLANS TO GPS ANY UNKNOWN MONUMENT FOUND WHICH IS SUBJECT TO DESTRUCTION BY THE RESURFACING WORK, AND INFORM THEM TO RESET THE MONUMENT UPON JOB COMPLETION. NO MONUMENT RECORDS ARE REQUIRED FOR THIS JOB.

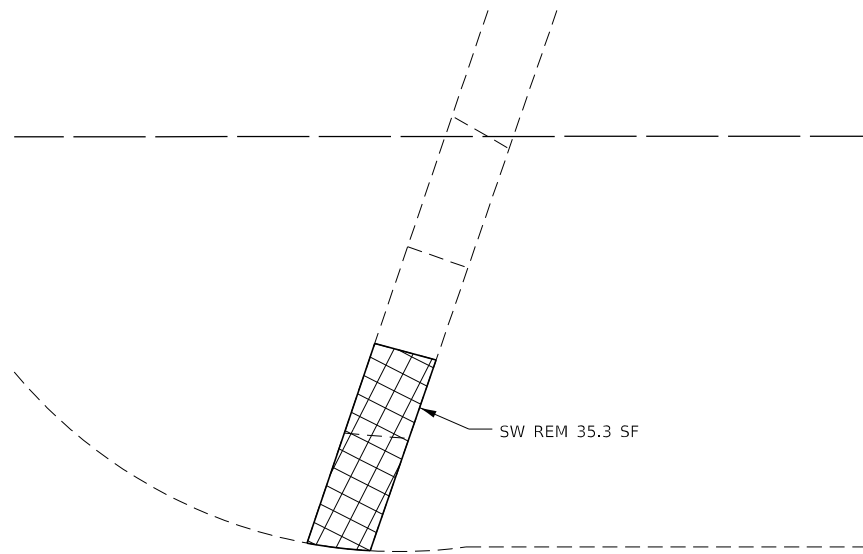
| | | | |
|---|------------------------------|------------|-----------|
| FILE NAME = | USER NAME = corcoranlm | DESIGNED - | REVISED - |
| pw:\planroom\dot\illinois.gov\PWDOT\Documents\DOT\Office\District 3\Projects\D366K56\CADData\CADsheets\D366K56-DRWN.dgn | | DRAWN - | REVISED - |
| Default | PLOT SCALE = 100.0000' / in. | CHECKED - | REVISED - |
| | PLOT DATE = 12/7/2020 | DATE - | REVISED - |

**STATE OF ILLINOIS
DEPARTMENT OF TRANSPORTATION**

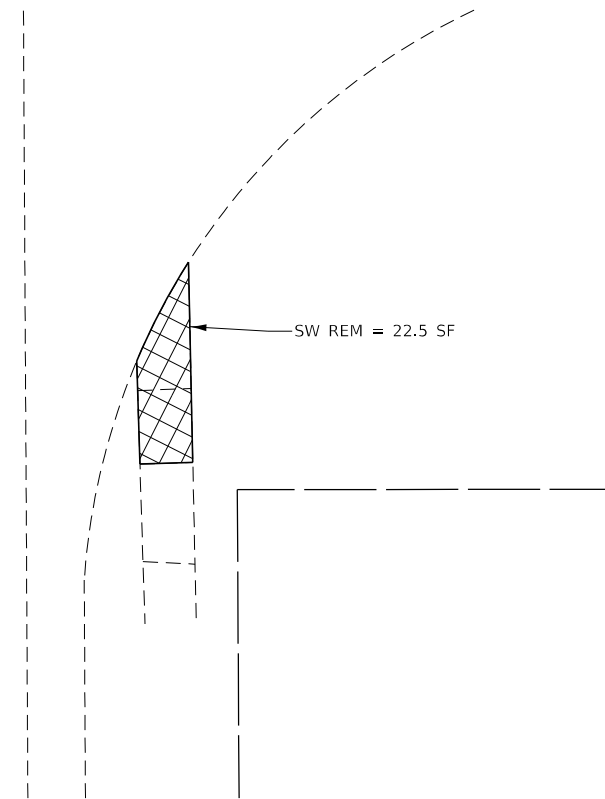
LAYOUT MAP

SCALE: SHEET OF SHEETS STA. TO STA.

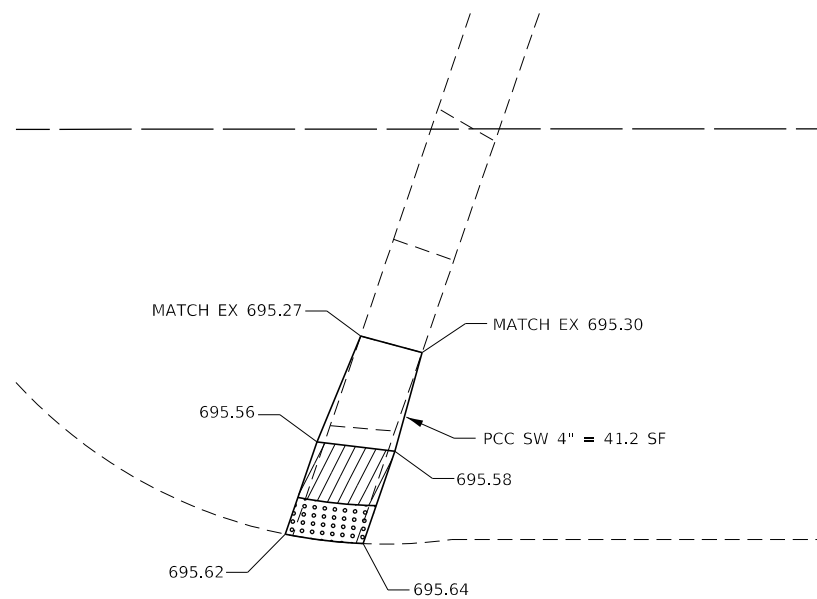
| | | | | |
|--------------------|----------------|----------|------------------|-----------|
| F.A.S. RTE. | SECTION | COUNTY | TOTAL SHEETS | SHEET NO. |
| 338 | (33,34)RS-5,SW | IROQUOIS | 23 | 12 |
| CONTRACT NO. 66K56 | | | | |
| | | ILLINOIS | FED. AID PROJECT | |



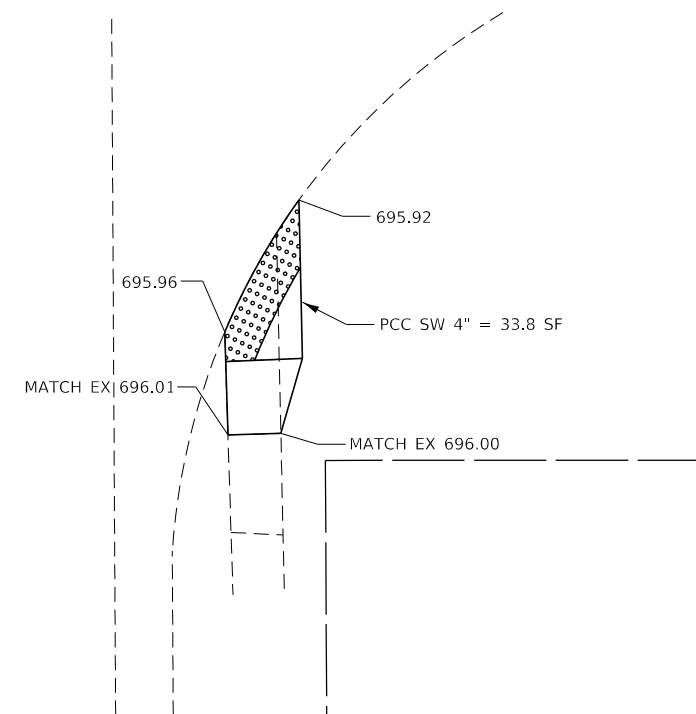
EXISTING NE QUADRANT



EXISTING SE QUADRANT



PROPOSED NE QUADRANT



PROPOSED SE QUADRANT

NOTES:

1. ALL TURNING SPACES (OR LANDINGS) SHALL HAVE MAXIMUM SLOPES OF 1.5% IN ALL DIRECTIONS. SEE STANDARDS FOR DETAILS.
2. USE SIDE CURB ONLY WHERE NEEDED TO MEET GRADE. IT SHOULD NOT BE USED NEXT TO PAVED PARKING LOTS OR OTHER WALKING SURFACES.
3. PROP SIDEWALK REMOVAL AND REPLACEMENT AREAS WERE BASED ON SURVEY. IF FIELD CONDITIONS ALLOW YOU TO FOLLOW THE SIDEWALK STANDARDS AND MEET MINIMUM REQUIREMENTS WITH LESS REPLACEMENT, THESE AREAS SHOULD BE ADJUSTED.



- PAVEMENT REMOVAL
- DETECTABLE WARNINGS
- SIDEWALK REMOVAL
- CCC&G REMOVAL

MODEL: Default
 FILE: \\blm1c2.pw.state.il.us\pub\blmroom\dat\illinois.gov\PI\DOT\Documents\DOT_Offices\District_3\Projects\036656\CADD\Drawings\036656-RT-ADA_plan.dwg

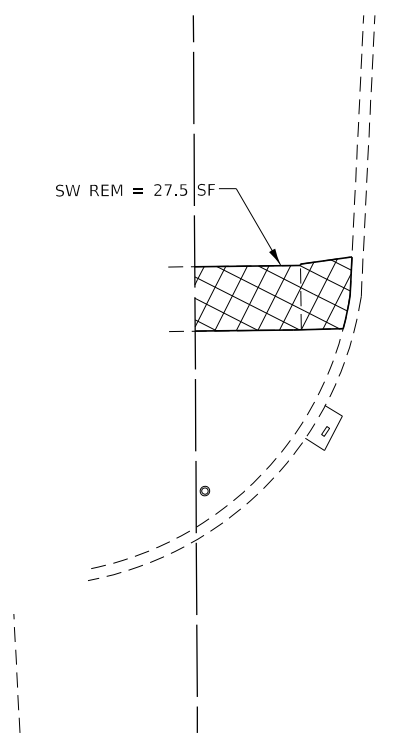
| | | |
|------------------------------|------------|-----------|
| USER NAME = corcoranlm | DESIGNED - | REVISED - |
| | DRAWN - | REVISED - |
| PLOT SCALE = 10.0000 ' / in. | CHECKED - | REVISED - |
| PLOT DATE = 12/7/2020 | DATE - | REVISED - |

**STATE OF ILLINOIS
DEPARTMENT OF TRANSPORTATION**

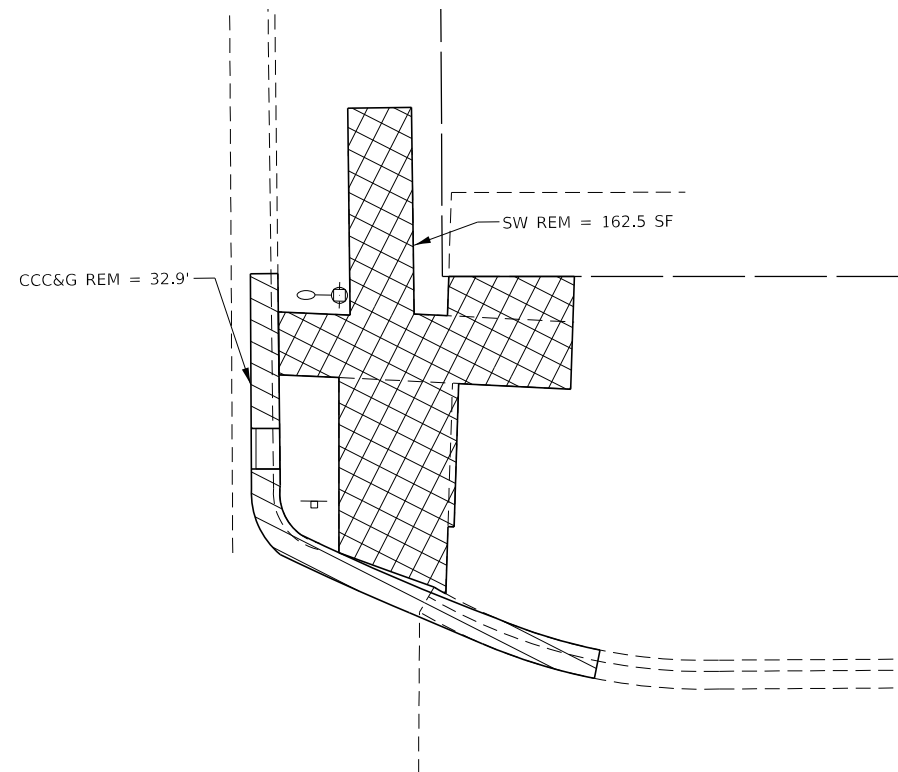
**ADA RAMP DETAILS
CENTENNIAL ST**

SCALE: SHEET OF SHEETS STA. TO STA.

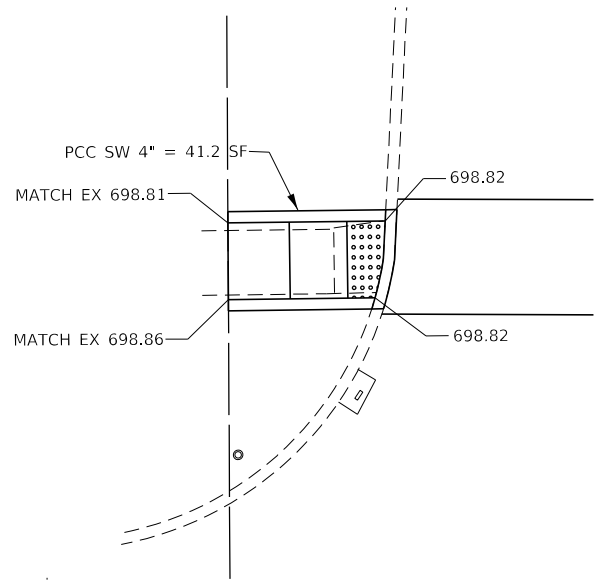
| F.A.S. RTE. | SECTION | COUNTY | TOTAL SHEETS | SHEET NO. |
|---------------------------|----------------|----------|--------------|-----------|
| 338 | (33,34)RS-5,SW | IROQUOIS | 23 | 13 |
| CONTRACT NO. 66K56 | | | | |
| ILLINOIS FED. AID PROJECT | | | | |



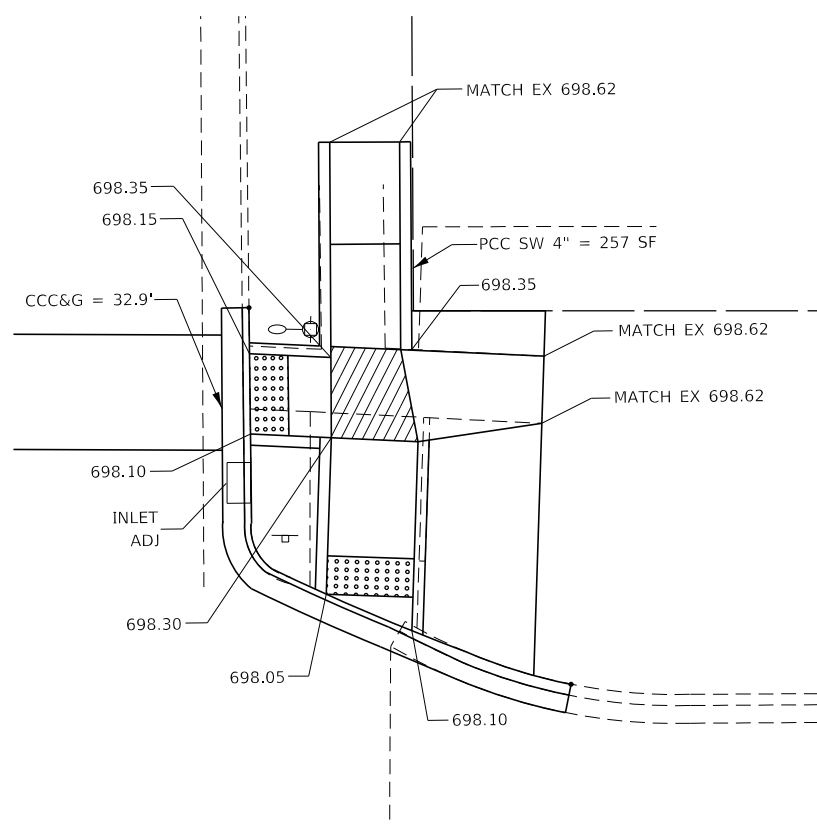
EXISTING NW QUADRANT



EXISTING NE QUADRANT



PROPOSED NW QUADRANT



PROPOSED NE QUADRANT

- NOTES:
1. ALL TURNING SPACES (OR LANDINGS) SHALL HAVE MAXIMUM SLOPES OF 1.5% IN ALL DIRECTIONS. SEE STANDARDS FOR DETAILS.
 2. USE SIDE CURB ONLY WHERE NEEDED TO MEET GRADE. IT SHOULD NOT BE USED NEXT TO PAVED PARKING LOTS OR OTHER WALKING SURFACES.
 3. PROP SIDEWALK REMOVAL AND REPLACEMENT AREAS WERE BASED ON SURVEY. IF FIELD CONDITIONS ALLOW YOU TO FOLLOW THE SIDEWALK STANDARDS AND MEET MINIMUM REQUIREMENTS WITH LESS REPLACEMENT, THESE AREAS SHOULD BE ADJUSTED.



- PAVEMENT REMOVAL
- DETECTABLE WARNINGS
- SIDEWALK REMOVAL
- CCC&G REMOVAL

MODEL: Default
 FILE: \\blm1c1.pw.state.il.us\pub\aroom\data\illinois\pwr\pww\DOT\Documents\DOT_Offices\Dir\dtct_3\Projects\0366K56\CADD\data\CAD\sheet\0366K56-11-4DA.plt:ar.com

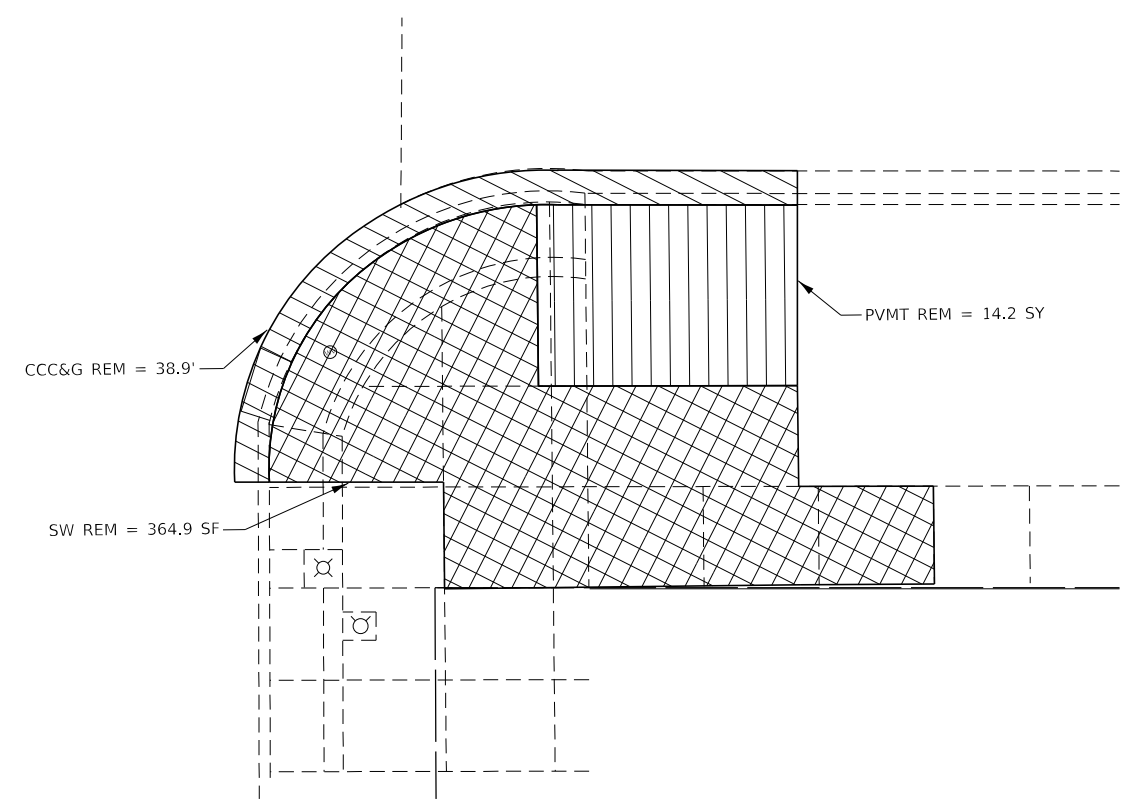
| | | |
|------------------------------|------------|-----------|
| USER NAME = corcoranlm | DESIGNED - | REVISED - |
| | DRAWN - | REVISED - |
| PLOT SCALE = 10.0000 ' / in. | CHECKED - | REVISED - |
| PLOT DATE = 12/7/2020 | DATE - | REVISED - |

STATE OF ILLINOIS
DEPARTMENT OF TRANSPORTATION

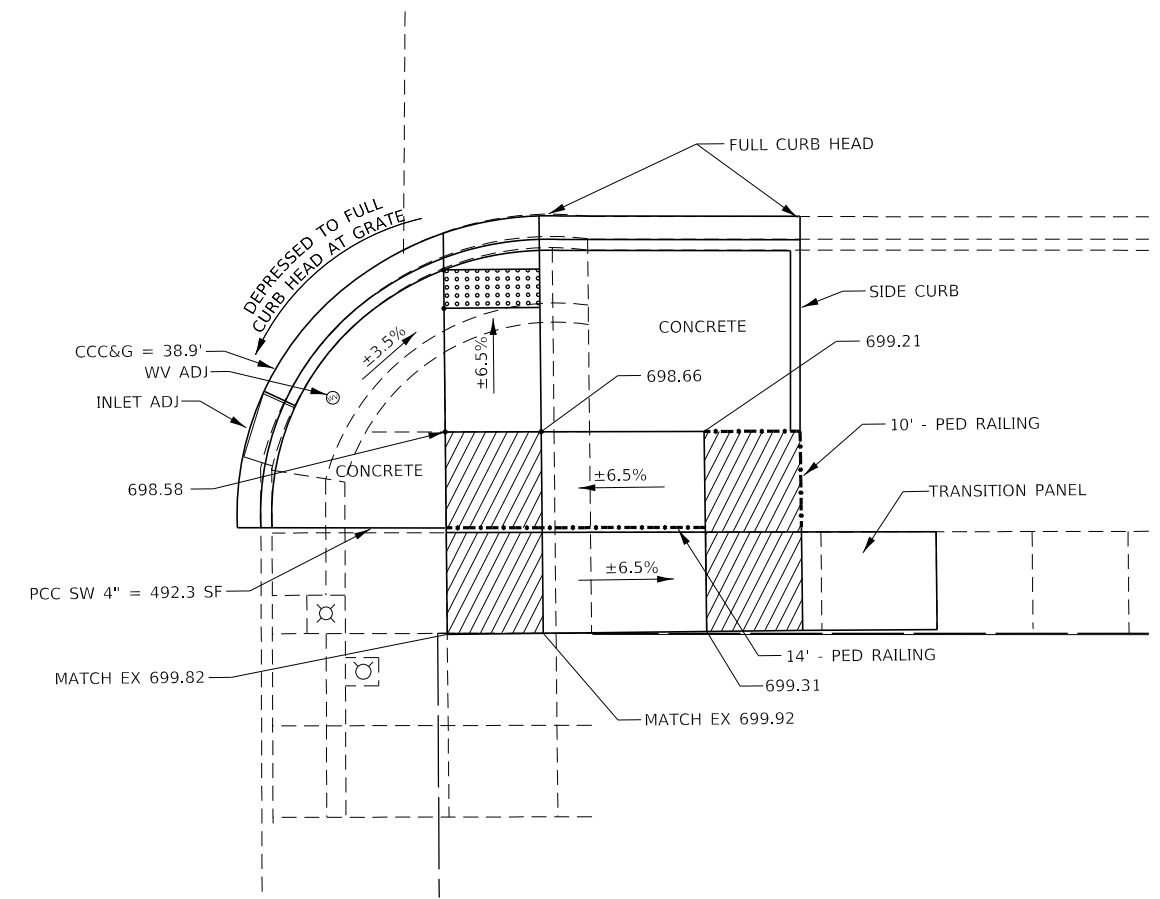
ADA RAMP DETAILS
MAIN ST

SCALE: SHEET OF SHEETS STA. TO STA.

| F.A.S. RTE. | SECTION | COUNTY | TOTAL SHEETS | SHEET NO. |
|---------------------------|----------------|----------|--------------|-----------|
| 338 | (33,34)RS-5,SW | IROQUOIS | 23 | 14 |
| CONTRACT NO. 66K56 | | | | |
| ILLINOIS FED. AID PROJECT | | | | |



EXISTING SE QUADRANT



PROPOSED SE QUADRANT

- NOTES:
1. ALL TURNING SPACES (OR LANDINGS) SHALL HAVE MAXIMUM SLOPES OF 1.5% IN ALL DIRECTIONS. SEE STANDARDS FOR DETAILS.
 2. USE SIDE CURB ONLY WHERE NEEDED TO MEET GRADE. IT SHOULD NOT BE USED NEXT TO PAVED PARKING LOTS OR OTHER WALKING SURFACES.
 3. PROP SIDEWALK REMOVAL AND REPLACEMENT AREAS WERE BASED ON SURVEY. IF FIELD CONDITIONS ALLOW YOU TO FOLLOW THE SIDEWALK STANDARDS AND MEET MINIMUM REQUIREMENTS WITH LESS REPLACEMENT, THESE AREAS SHOULD BE ADJUSTED.



- PAVEMENT REMOVAL
- DETECTABLE WARNINGS
- SIDEWALK REMOVAL
- CCC&G REMOVAL

MODEL: Default
 FILE: Main: C:\pub\baronm.dwg
 PROJECT: RWIDOT\Documents\DOT_Offices\District_3\Projects\336656\CADD\336656-RT-ADA.dwg
 PLOT DATE: 12/8/2020

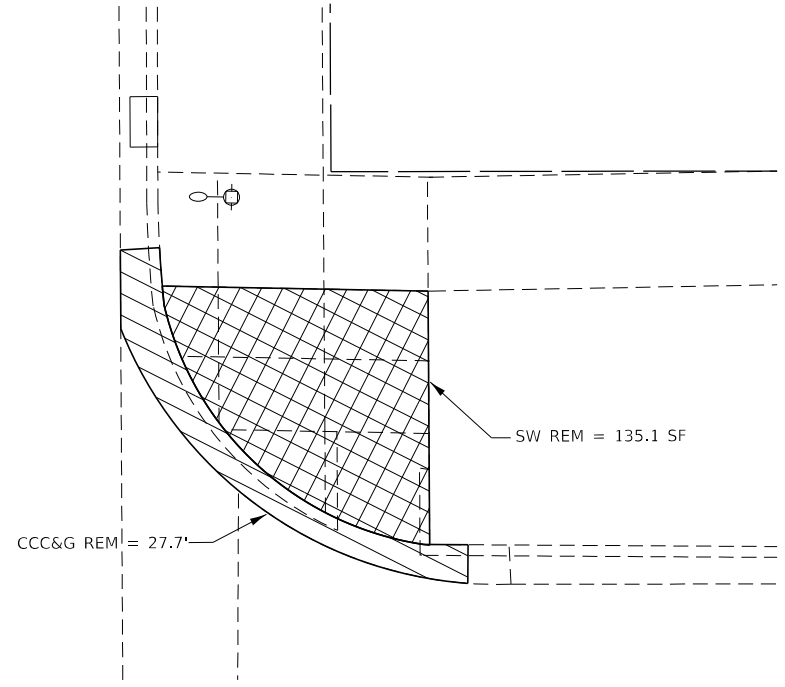
| | | |
|-----------------------------|------------|-----------|
| USER NAME = corcoranlm | DESIGNED - | REVISED - |
| | DRAWN - | REVISED - |
| PLOT SCALE = 10.0000' / in. | CHECKED - | REVISED - |
| PLOT DATE = 12/8/2020 | DATE - | REVISED - |

STATE OF ILLINOIS
DEPARTMENT OF TRANSPORTATION

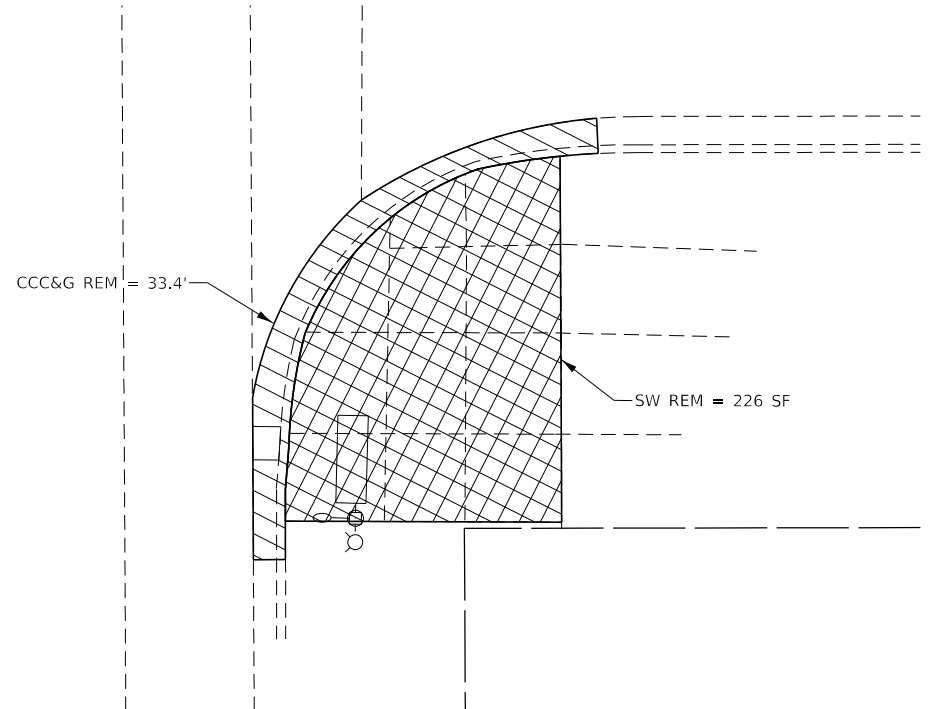
ADA RAMP DETAILS
MAIN ST

SCALE: SHEET OF SHEETS STA. TO STA.

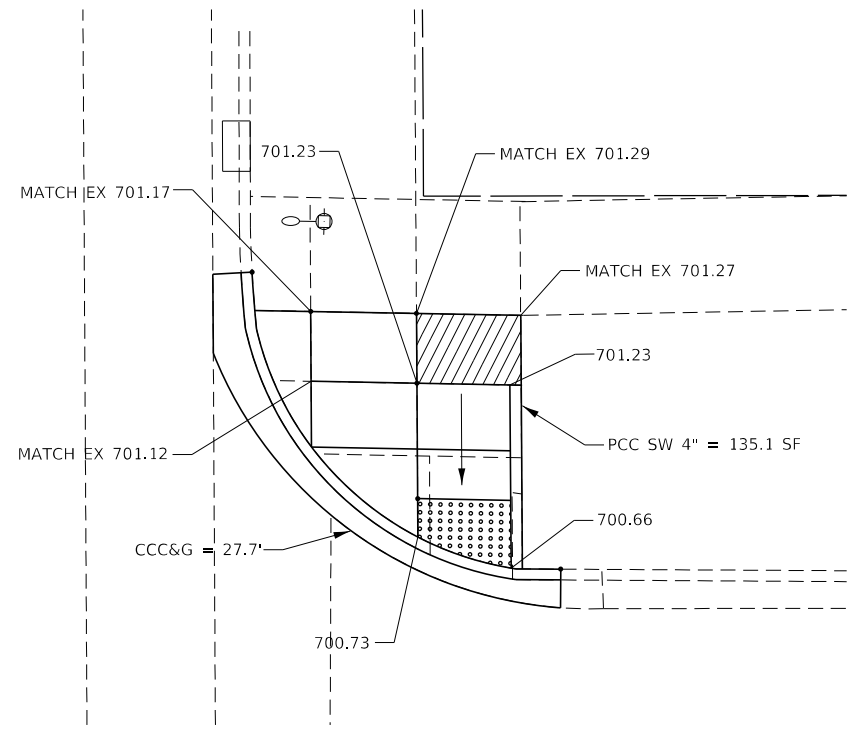
| F.A.S. RTE. | SECTION | COUNTY | TOTAL SHEETS | SHEET NO. |
|---------------------------|----------------|----------|--------------|-----------|
| 338 | (33,34)RS-5,SW | IROQUOIS | 23 | 15 |
| CONTRACT NO. 66K56 | | | | |
| ILLINOIS FED. AID PROJECT | | | | |



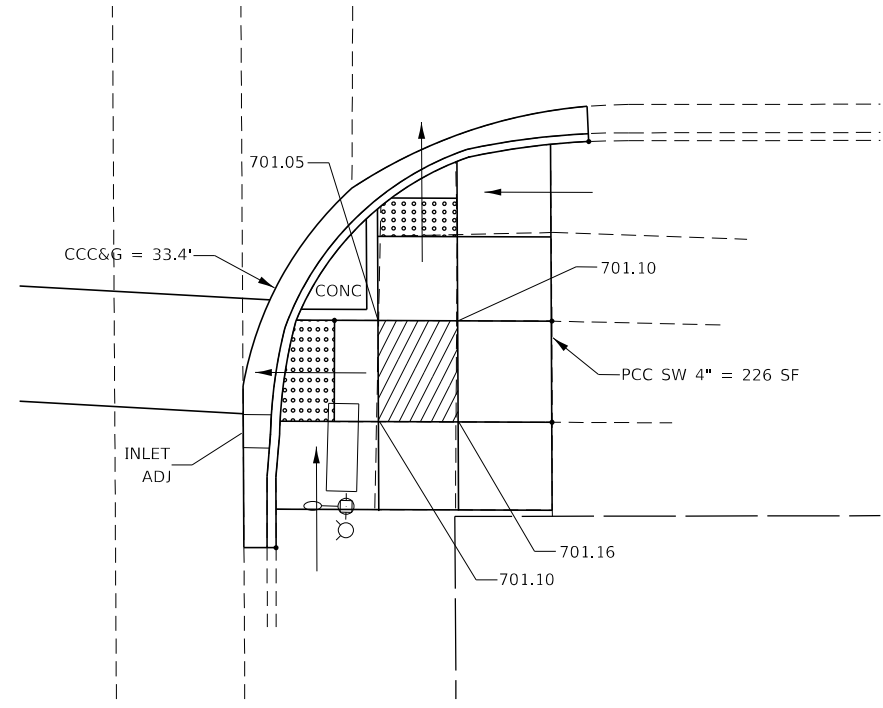
EXISTING NE QUADRANT



EXISTING SE QUADRANT

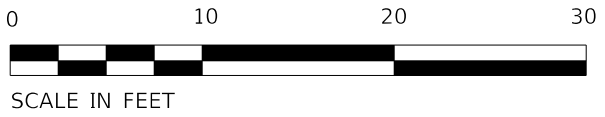


PROPOSED NE QUADRANT



PROPOSED SE QUADRANT

- NOTES:
1. ALL TURNING SPACES (OR LANDINGS) SHALL HAVE MAXIMUM SLOPES OF 1.5% IN ALL DIRECTIONS. SEE STANDARDS FOR DETAILS.
 2. USE SIDE CURB ONLY WHERE NEEDED TO MEET GRADE. IT SHOULD NOT BE USED NEXT TO PAVED PARKING LOTS OR OTHER WALKING SURFACES.
 3. PROP SIDEWALK REMOVAL AND REPLACEMENT AREAS WERE BASED ON SURVEY. IF FIELD CONDITIONS ALLOW YOU TO FOLLOW THE SIDEWALK STANDARDS AND MEET MINIMUM REQUIREMENTS WITH LESS REPLACEMENT, THESE AREAS SHOULD BE ADJUSTED.



- PAVEMENT REMOVAL
- DETECTABLE WARNINGS
- SIDEWALK REMOVAL
- CCC&G REMOVAL

MODEL: Default
 FILE: Model: 338\p16\room.dwg
 PLOT DATE: 12/7/2020
 PROJECT: 338\p16\room.dwg
 OFFICE: 338\p16\room.dwg
 USER: corcoranlm

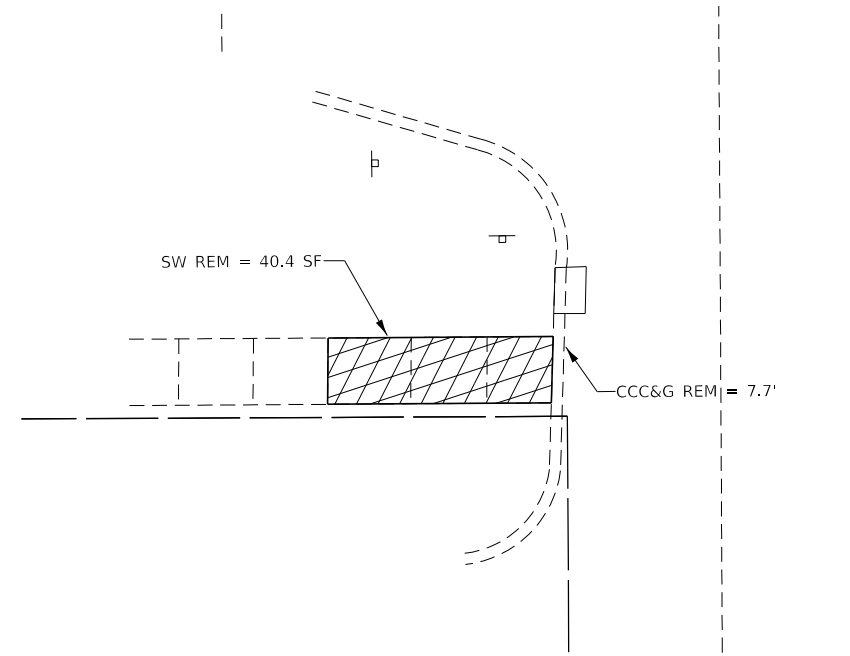
| | | |
|------------------------------|------------|-----------|
| USER NAME = corcoranlm | DESIGNED - | REVISED - |
| | DRAWN - | REVISED - |
| PLOT SCALE = 10.0000 ' / in. | CHECKED - | REVISED - |
| PLOT DATE = 12/7/2020 | DATE - | REVISED - |

STATE OF ILLINOIS
DEPARTMENT OF TRANSPORTATION

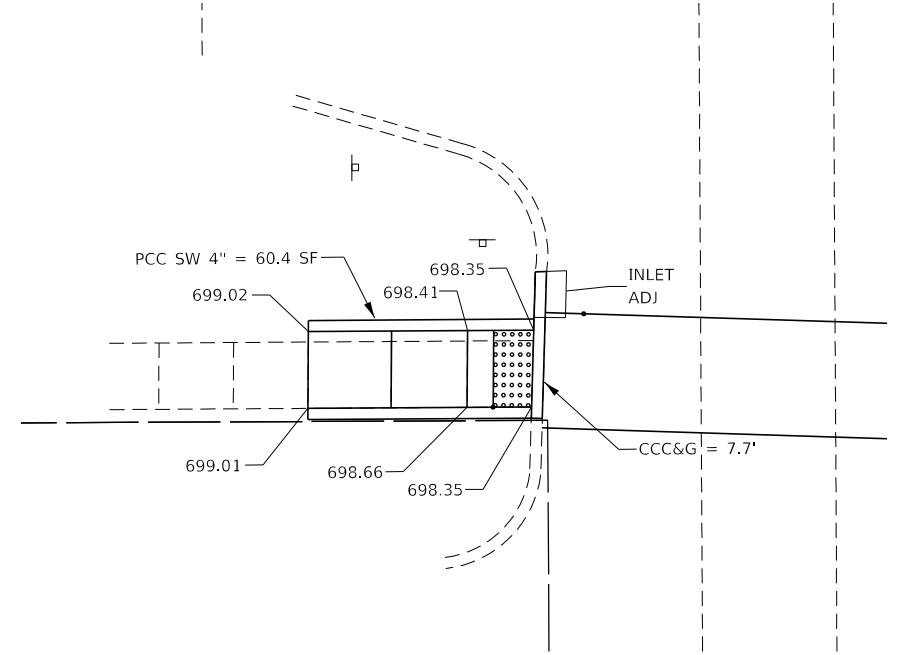
ADA RAMP DETAILS
CENTRAL ST

SCALE: SHEET OF SHEETS STA. TO STA.

| F.A.S. RTE. | SECTION | COUNTY | TOTAL SHEETS | SHEET NO. |
|---------------------------|----------------|----------|--------------------|-----------|
| 338 | (33,34)RS-5,SW | IROQUOIS | 23 | 16 |
| ILLINOIS FED. AID PROJECT | | | CONTRACT NO. 66K56 | |



EXISTING WEST QUADRANT



PROPOSED WEST QUADRANT

- NOTES:
1. ALL TURNING SPACES (OR LANDINGS) SHALL HAVE MAXIMUM SLOPES OF 1.5% IN ALL DIRECTIONS. SEE STANDARDS FOR DETAILS.
 2. USE SIDE CURB ONLY WHERE NEEDED TO MEET GRADE. IT SHOULD NOT BE USED NEXT TO PAVED PARKING LOTS OR OTHER WALKING SURFACES.
 3. PROP SIDEWALK REMOVAL AND REPLACEMENT AREAS WERE BASED ON SURVEY. IF FIELD CONDITIONS ALLOW YOU TO FOLLOW THE SIDEWALK STANDARDS AND MEET MINIMUM REQUIREMENTS WITH LESS REMOVAL, THESE AREAS SHOULD BE ADJUSTED.



- PAVEMENT REMOVAL
- DETECTABLE WARNINGS
- SIDEWALK REMOVAL
- CCC&G REMOVAL

MODEL: Default
 FILE: \\blm1c2.pw.us\planningroom\data\lincoln\pwr\WIDOT\Documents\DOT_Offices\District_3\Projects\ID366K56\CADD\data\CAD\sheet\ID366K56-PL-ADA_plan.dwg

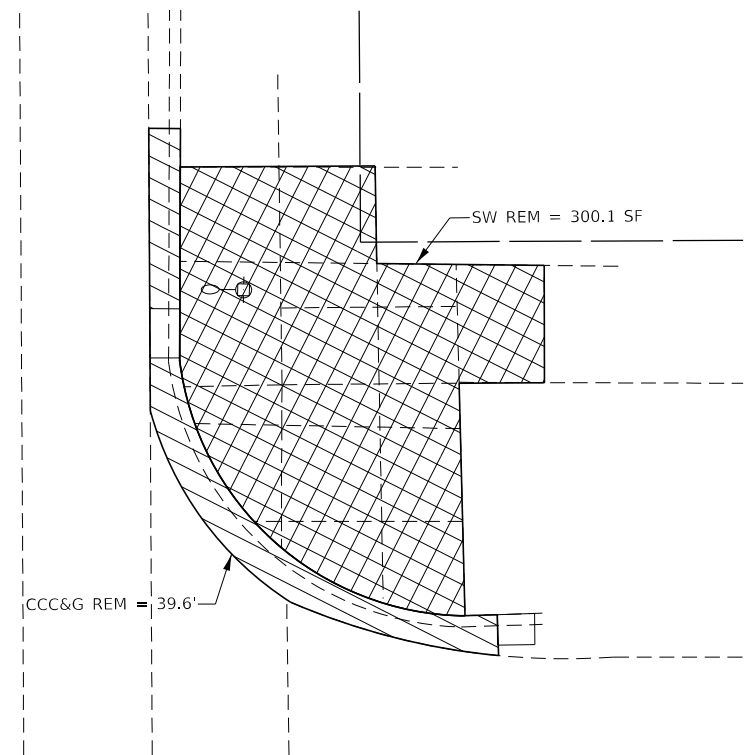
| | | |
|------------------------------|------------|-----------|
| USER NAME = corcoranlm | DESIGNED - | REVISED - |
| | DRAWN - | REVISED - |
| PLOT SCALE = 10.0000 ' / in. | CHECKED - | REVISED - |
| PLOT DATE = 12/7/2020 | DATE - | REVISED - |

**STATE OF ILLINOIS
DEPARTMENT OF TRANSPORTATION**

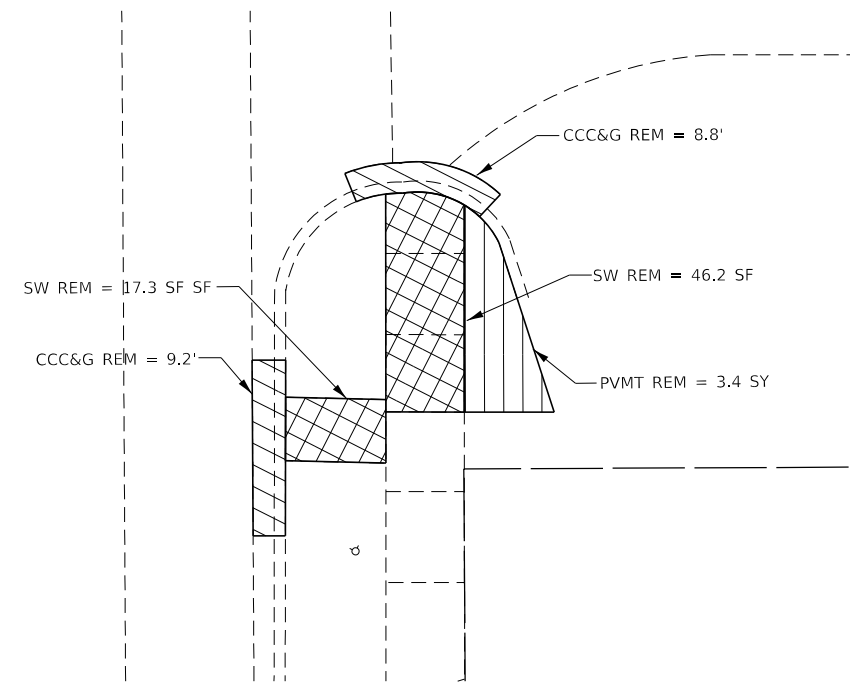
**ADA RAMP DETAILS
LINCOLN ST**

SCALE: SHEET OF SHEETS STA. TO STA.

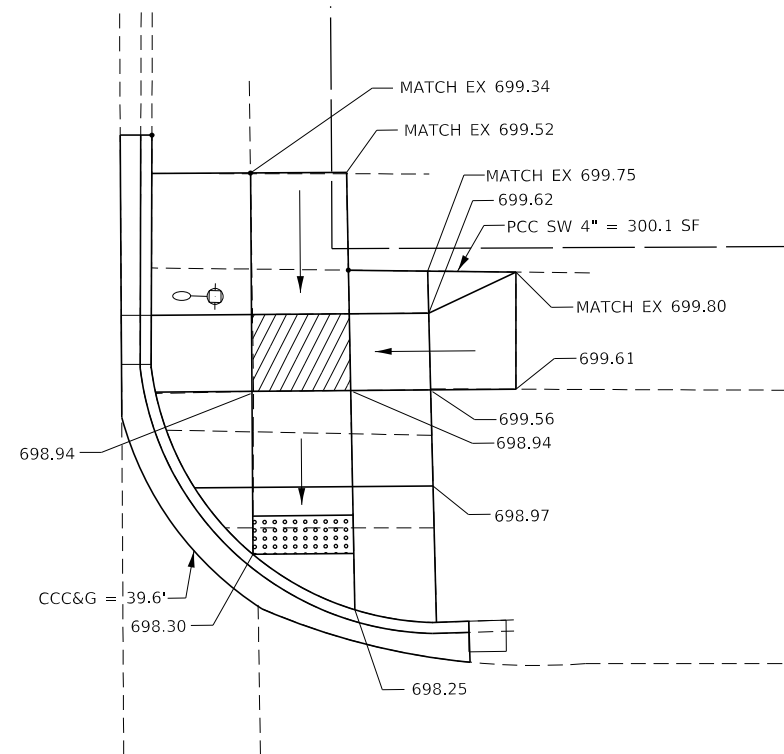
| F.A.S. RTE. | SECTION | COUNTY | TOTAL SHEETS | SHEET NO. |
|---------------------------|----------------|----------|--------------|-----------|
| 338 | (33,34)RS-5,SW | IROQUOIS | 23 | 17 |
| CONTRACT NO. 66K56 | | | | |
| ILLINOIS FED. AID PROJECT | | | | |



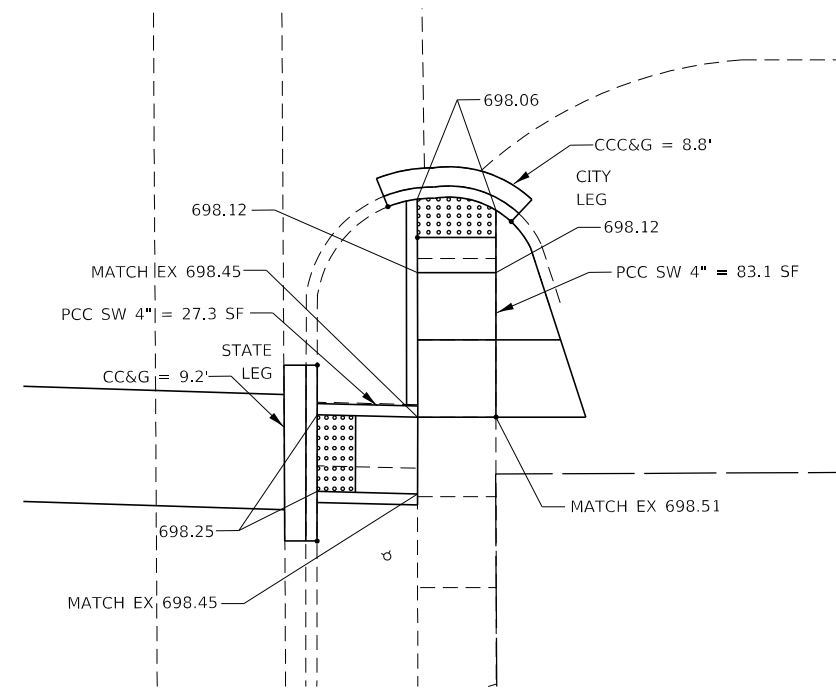
EXISTING NE QUADRANT



EXISTING SE QUADRANT

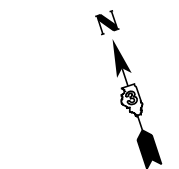


PROPOSED NE QUADRANT



PROPOSED SE QUADRANT

- NOTES:
1. ALL TURNING SPACES (OR LANDINGS) SHALL HAVE MAXIMUM SLOPES OF 1.5% IN ALL DIRECTIONS. SEE STANDARDS FOR DETAILS.
 2. USE SIDE CURB ONLY WHERE NEEDED TO MEET GRADE. IT SHOULD NOT BE USED NEXT TO PAVED PARKING LOTS OR OTHER WALKING SURFACES.
 3. PROP SIDEWALK REMOVAL AND REPLACEMENT AREAS WERE BASED ON SURVEY. IF FIELD CONDITIONS ALLOW YOU TO FOLLOW THE SIDEWALK STANDARDS AND MEET MINIMUM REQUIREMENTS WITH LESS REPLACEMENT, THESE AREAS SHOULD BE ADJUSTED.



- PAVEMENT REMOVAL
- DETECTABLE WARNINGS
- SIDEWALK REMOVAL
- CCC&G REMOVAL

MODEL: Default
 FILE: \\blm1c01.pw.state.il.us\pub\baronm.d\at\lincoln\p\WIDOT\Documents\DOT_Offices\District_3\Projects\336656\CADD\Drawings\336656-RT-ADA_pln.dwg

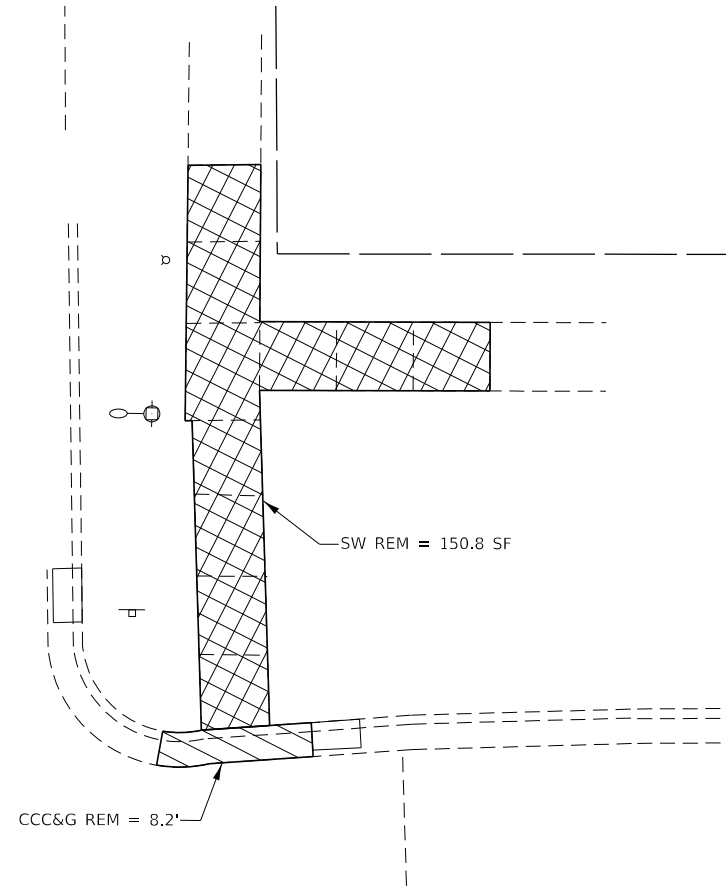
| | | |
|------------------------------|------------|-----------|
| USER NAME = corcoranlm | DESIGNED - | REVISED - |
| PLOT SCALE = 10.0000 ' / in. | DRAWN - | REVISED - |
| PLOT DATE = 12/7/2020 | CHECKED - | REVISED - |
| | DATE - | REVISED - |

STATE OF ILLINOIS
DEPARTMENT OF TRANSPORTATION

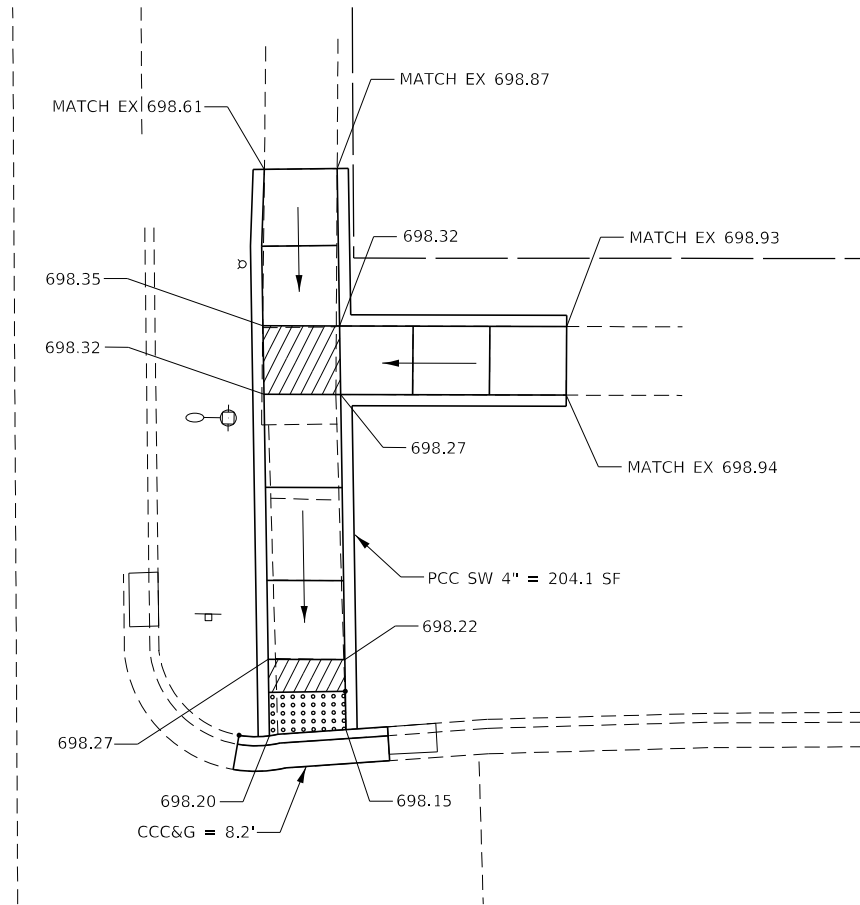
ADA RAMP DETAILS
LINCOLN ST

SCALE: SHEET OF SHEETS STA. TO STA.

| | | | | |
|-----------------|------------------------|---------------------------|--------------------|--------------|
| F.A.S. RTE. 338 | SECTION (33,34)RS-5,SW | COUNTY IROQUOIS | TOTAL SHEETS 23 | SHEET NO. 18 |
| | | | CONTRACT NO. 66K56 | |
| | | ILLINOIS FED. AID PROJECT | | |



EXISTING NE QUADRANT



PROPOSED NE QUADRANT

NOTES:

1. ALL TURNING SPACES (OR LANDINGS) SHALL HAVE MAXIMUM SLOPES OF 1.5% IN ALL DIRECTIONS. SEE STANDARDS FOR DETAILS.
2. USE SIDE CURB ONLY WHERE NEEDED TO MEET GRADE. IT SHOULD NOT BE USED NEXT TO PAVED PARKING LOTS OR OTHER WALKING SURFACES.
3. PROP SIDEWALK REMOVAL AND REPLACEMENT AREAS WERE BASED ON SURVEY. IF FIELD CONDITIONS ALLOW YOU TO FOLLOW THE SIDEWALK STANDARDS AND MEET MINIMUM REQUIREMENTS WITH LESS REPLACEMENT, THESE AREAS SHOULD BE ADJUSTED.



- PAVEMENT REMOVAL
- DETECTABLE WARNINGS
- SIDEWALK REMOVAL
- CCC&G REMOVAL

MODEL: Default
 FILE: \\blm1c1.pw.us\pub\room\ada\illinois.gov\PW\DOT\Documents\DOT_Offices\District_3\Projects\ID366K56\CADD\Drawings\CAD\Sheet\ID366K56-RT-ADA_plan.dwg

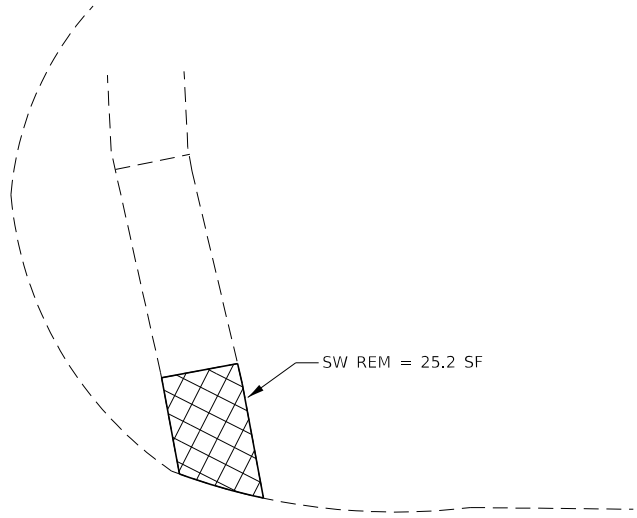
| | | |
|------------------------------|------------|-----------|
| USER NAME = corcoranlm | DESIGNED - | REVISED - |
| | DRAWN - | REVISED - |
| PLOT SCALE = 10.0000 ' / in. | CHECKED - | REVISED - |
| PLOT DATE = 12/7/2020 | DATE - | REVISED - |

STATE OF ILLINOIS
DEPARTMENT OF TRANSPORTATION

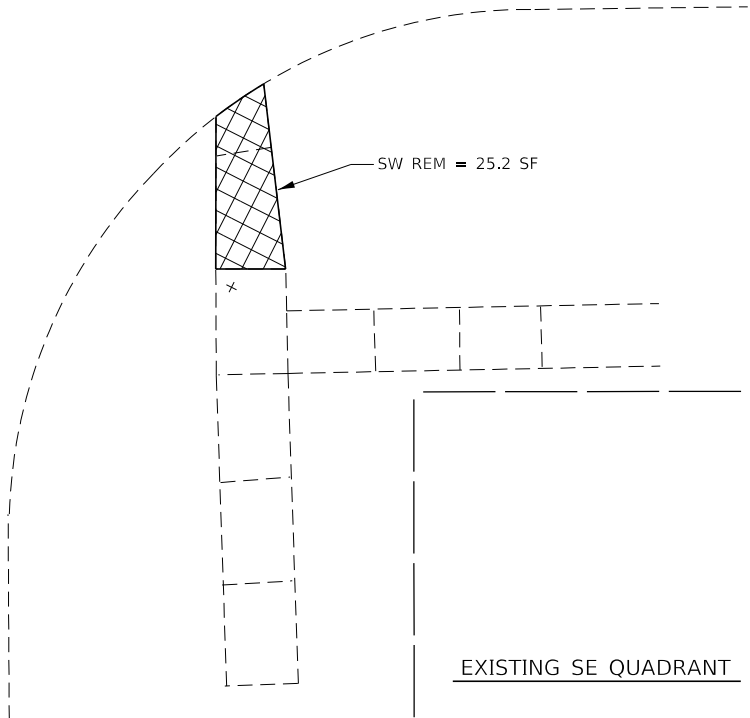
ADA RAMP DETAILS
ELM ST

SCALE: SHEET OF SHEETS STA. TO STA.

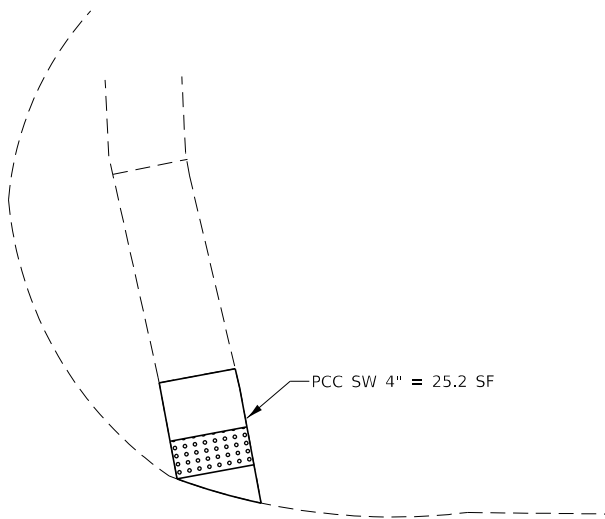
| | | | | |
|---------------------------|------------------------|-----------------|-----------------|--------------|
| F.A.S. RTE. 338 | SECTION (33,34)RS-5,SW | COUNTY IROQUOIS | TOTAL SHEETS 23 | SHEET NO. 19 |
| CONTRACT NO. 66K56 | | | | |
| ILLINOIS FED. AID PROJECT | | | | |



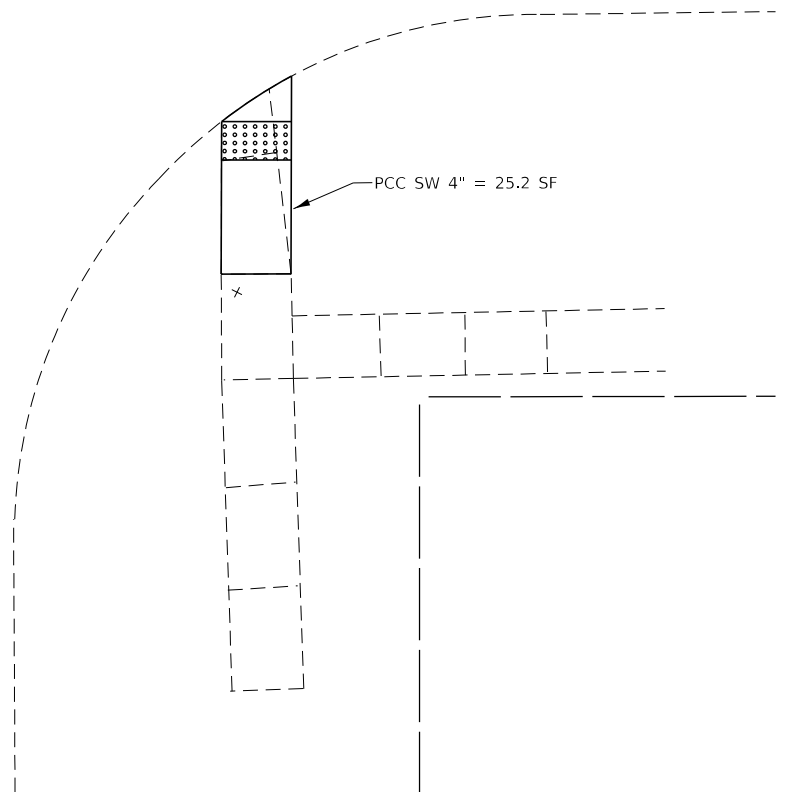
EXISTING NE QUADRANT



EXISTING SE QUADRANT

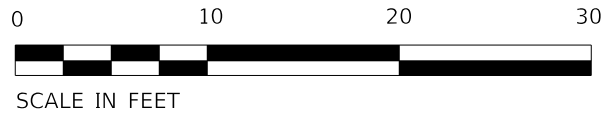


PROPOSED NE QUADRANT



PROPOSED SE QUADRANT

- NOTES:
1. ALL TURNING SPACES (OR LANDINGS) SHALL HAVE MAXIMUM SLOPES OF 1.5% IN ALL DIRECTIONS. SEE STANDARDS FOR DETAILS.
 2. USE SIDE CURB ONLY WHERE NEEDED TO MEET GRADE. IT SHOULD NOT BE USED NEXT TO PAVED PARKING LOTS OR OTHER WALKING SURFACES.
 3. PROP SIDEWALK REMOVAL AND REPLACEMENT AREAS WERE BASED ON SURVEY. IF FIELD CONDITIONS ALLOW YOU TO FOLLOW THE SIDEWALK STANDARDS AND MEET MINIMUM REQUIREMENTS WITH LESS REPLACEMENT, THESE AREAS SHOULD BE ADJUSTED.



- PAVEMENT REMOVAL
- DETECTABLE WARNINGS
- SIDEWALK REMOVAL
- CCC&G REMOVAL

MODEL: Default
 FILE: \\blm1c1-prod\planningroom\ada\illinois.gov\PI\DOT\Documents\DOT_Offices\District_3\Projects\ID36656\CADD\Drawings\ID36656-RT-ADA_plan.dwg

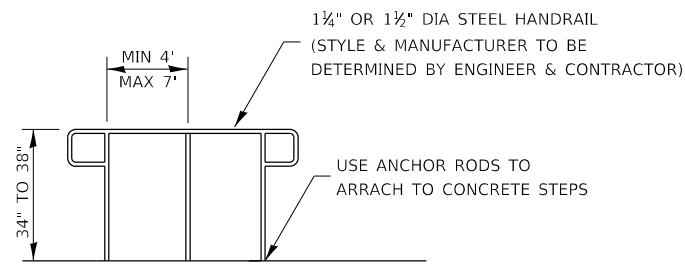
| | | |
|-----------------------------|------------|-----------|
| USER NAME = corcoranlm | DESIGNED - | REVISED - |
| | DRAWN - | REVISED - |
| PLOT SCALE = 10.0000' / in. | CHECKED - | REVISED - |
| PLOT DATE = 12/7/2020 | DATE - | REVISED - |

**STATE OF ILLINOIS
DEPARTMENT OF TRANSPORTATION**

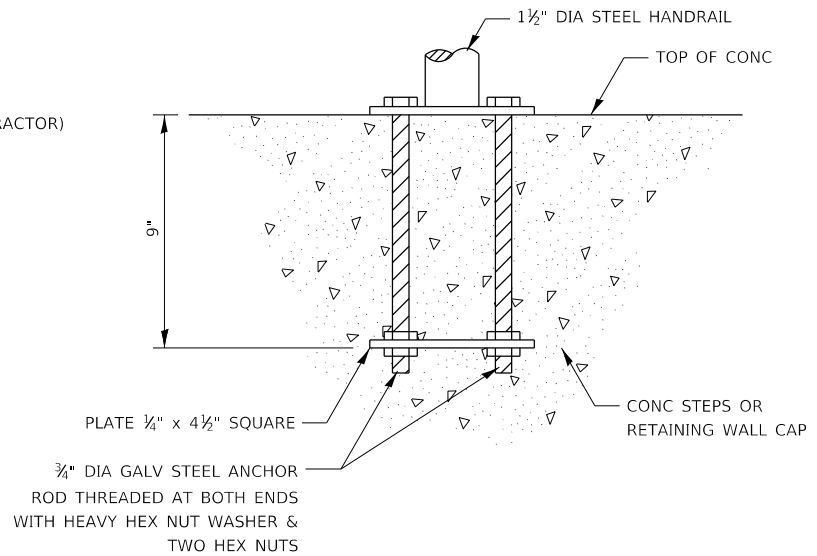
**ADA RAMP DETAILS
BLANE ST**

SCALE: SHEET OF SHEETS STA. TO STA.

| F.A.S. RTE. | SECTION | COUNTY | TOTAL SHEETS | SHEET NO. |
|---------------------------|----------------|----------|--------------|-----------|
| 338 | (33,34)RS-5,SW | IROQUOIS | 23 | 20 |
| CONTRACT NO. 66K56 | | | | |
| ILLINOIS FED. AID PROJECT | | | | |

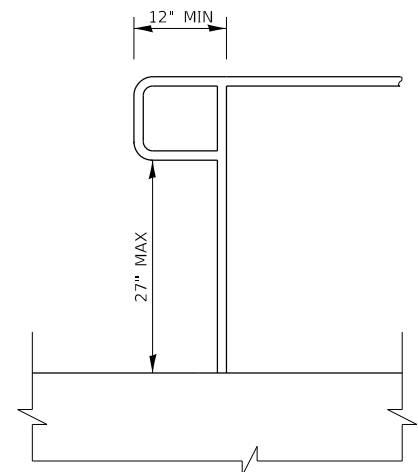


HANDRAIL

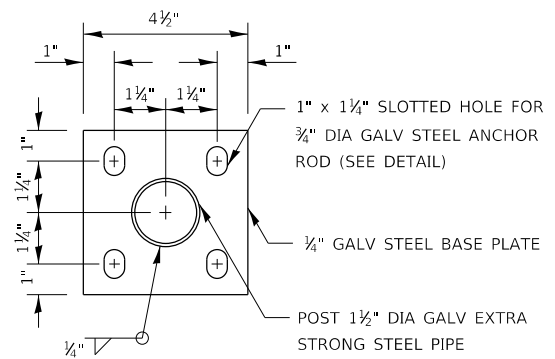


ANCHOR ROD DETAIL

(INCLUDED IN THE COST OF HAND OR SAFETY RAIL)



EXTENSION AT BOTTOM OF RUN DETAIL



POST CASE PLATE DETAIL

(INCLUDED IN THE COST OF HAND OR SAFETY RAIL)

NOTES:

GRIPPING SURFACES SHALL BE UNINTERRUPTED BY NEWEL POSTS, OTHER CONSTRUCTION ELEMENTS, OR OBSTRUCTIONS.

ENDS OF HANDRAIL SHALL BE EITHER ROUNDED OR RETURNED SMOOTHLY TO FLOOR, WALL, OR POST.

HAND & SAFETY RAILS SHALL NOT ROTATE WITHIN THEIR FITTINGS.

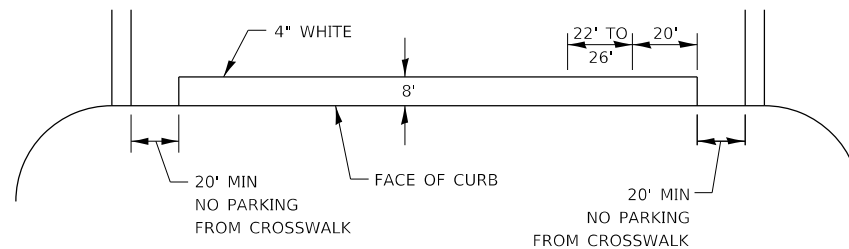
THE CLEAR SPACES BETWEEN HANDRAILS AND ANY WALL SHALL BE 1 1/2".

HANDRAIL SHALL CONFORM TO SECTION 509 WITH THE EXCEPTION THAT ALL PIPE AND CONNECTIONS SHALL BE WELDED GALVANIZED OR ALUMINUM ACCORDING TO ARTICLE 1006.27, 1006.30, OR 1006.34.

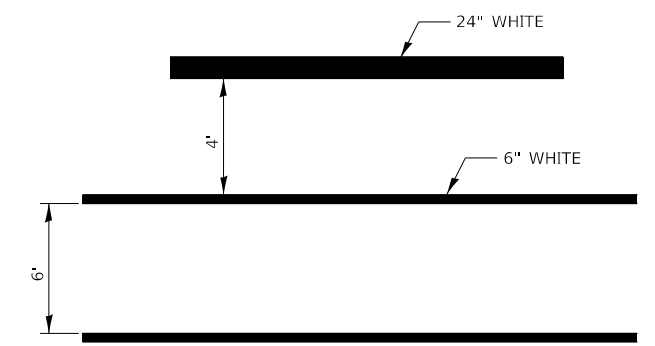
THE DIAMETER OF THE GRIPPING SURFACE OF THE HANDRAIL SHALL BE 1 1/4" TO 1 1/2".

THIS WORK SHALL BE PAID FOR AT THE CONTRACT UNIT PRICE PER FOOT FOR PIPE HANDRAIL.

PIPE HANDRAILS

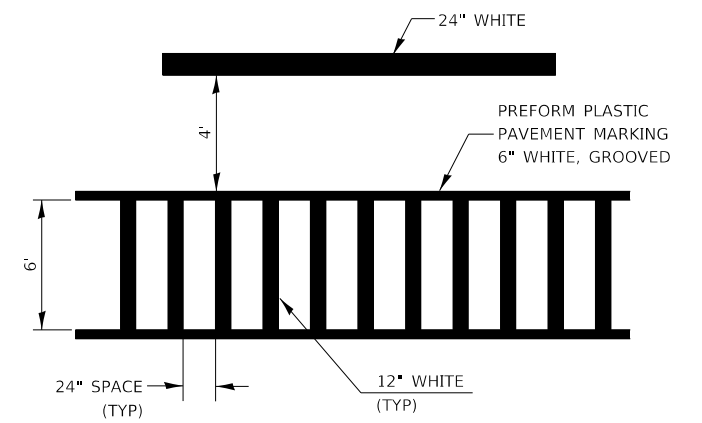


TYPICAL PARKING SPACING



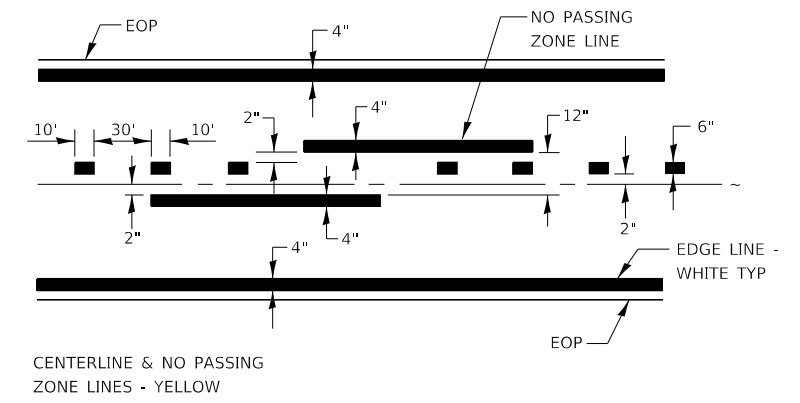
TYPICAL SPACING DETAIL FOR CROSSWALKS AND STOP BARS

OPTION 1



TYPICAL SPACING DETAIL FOR CROSSWALKS AND STOP BARS

OPTION 2



PAVEMENT MARKING

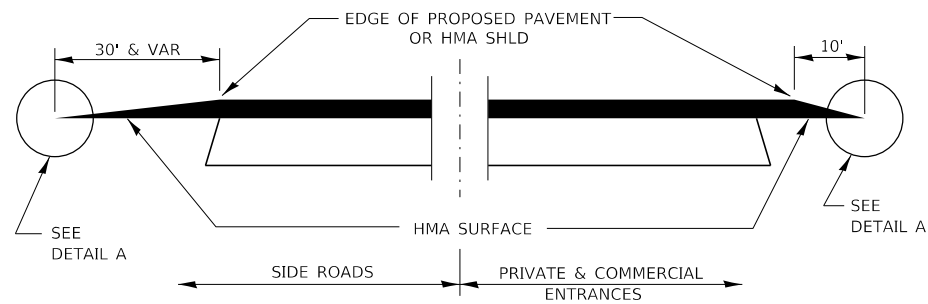
| | | | |
|--|------------------------|------------|-----------|
| FILE NAME = | USER NAME = corcoranlm | DESIGNED - | REVISED - |
| pw:\planroom\dot\illinois\gov\PWDOT\Documents\DOT\Office\District 3\Projects\D366K56\CADData\CADsheets\D366K56-DRAWN.dgn | | CHECKED - | REVISED - |
| Default | PLOT DATE = 12/8/2020 | DATE - | REVISED - |

**STATE OF ILLINOIS
DEPARTMENT OF TRANSPORTATION**

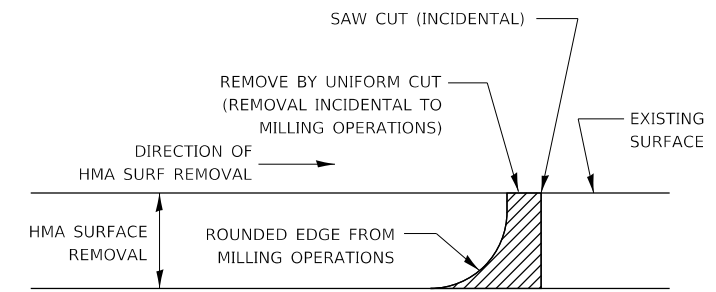
DETAILS

| | | | | | |
|--------|-------|----|--------|------|---------|
| SCALE: | SHEET | OF | SHEETS | STA. | TO STA. |
|--------|-------|----|--------|------|---------|

| | | | | |
|---------------------------|----------------|----------|--------------|-----------|
| F.A.S. RTE. | SECTION | COUNTY | TOTAL SHEETS | SHEET NO. |
| 338 | (33,34)RS-5,SW | IROQUOIS | 23 | 21 |
| CONTRACT NO. 66K56 | | | | |
| ILLINOIS FED. AID PROJECT | | | | |

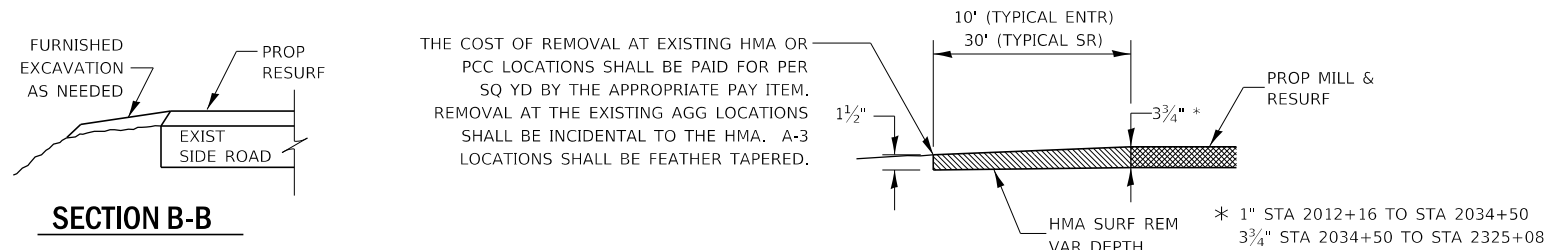


SECTION A-A
DETAILS AT ENTRANCES & SIDE ROADS



NOTE:
WHEN MILLING OPERATIONS PRODUCE A ROUNDED EDGE, THEN A SAW CUT SHALL BE USED TO MANUFACTURE A PERPENDICULAR EDGE AS SHOWN IN THE DETAIL. THE ENGINEER SHALL BE THE SOLE JUDGE CONCERNING THE USE OF THIS DETAIL.

HMA DETAIL AT BUTT JOINTS

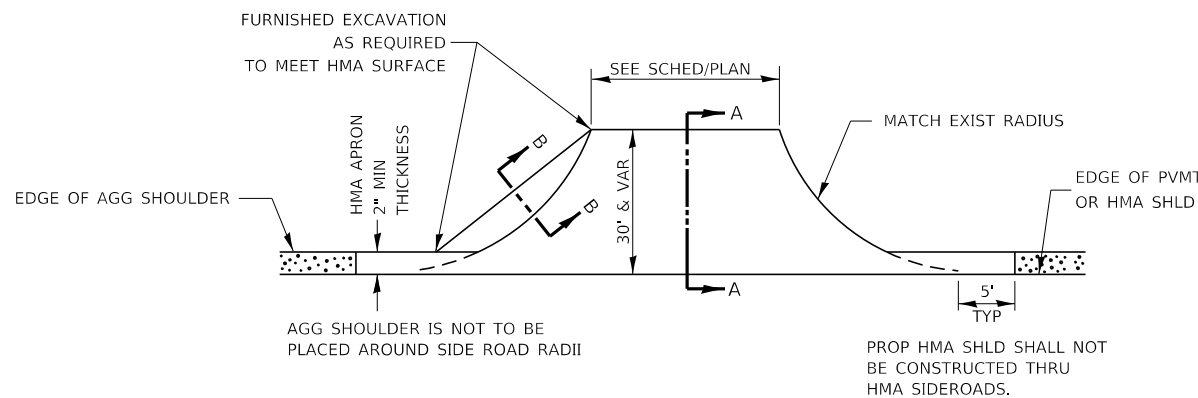


DETAIL A

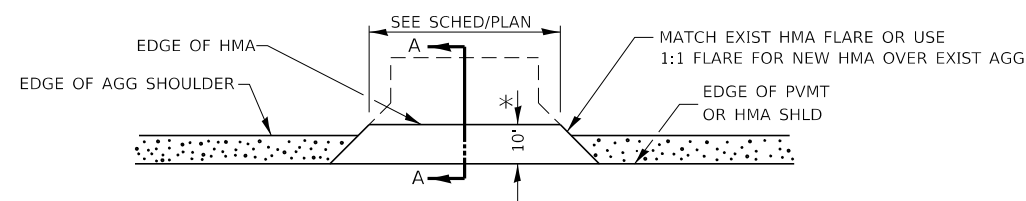
FURNISHED EXCAVATION AS NEEDED
PROP RESURF
EXIST SIDE ROAD

IF NEEDED, THE COST OF FURNISHED EXCAVATION AND ASSOCIATED SEEDING ITEMS WILL BE INCLUDED IN THE COST OF THE PAVING PAY ITEMS

SECTION B-B



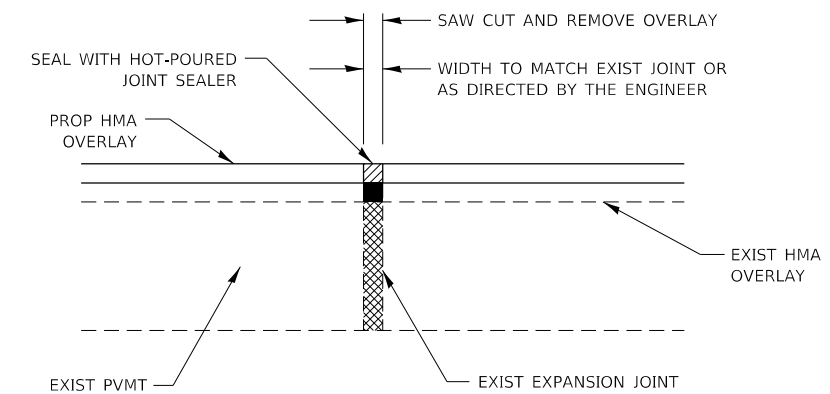
PLAN AT SIDE ROADS



PLAN AT PRIVATE & COMMERCIAL ENTRANCES

(DO NOT RESURFACE FIELD ENTRANCES)

* PROPOSED HMA RESURFACING AT PUBLIC EDUCATIONAL FACILITY ENTRANCES SHALL BE EXTENDED TO THE RIGHT-OF-WAY LIMITS.



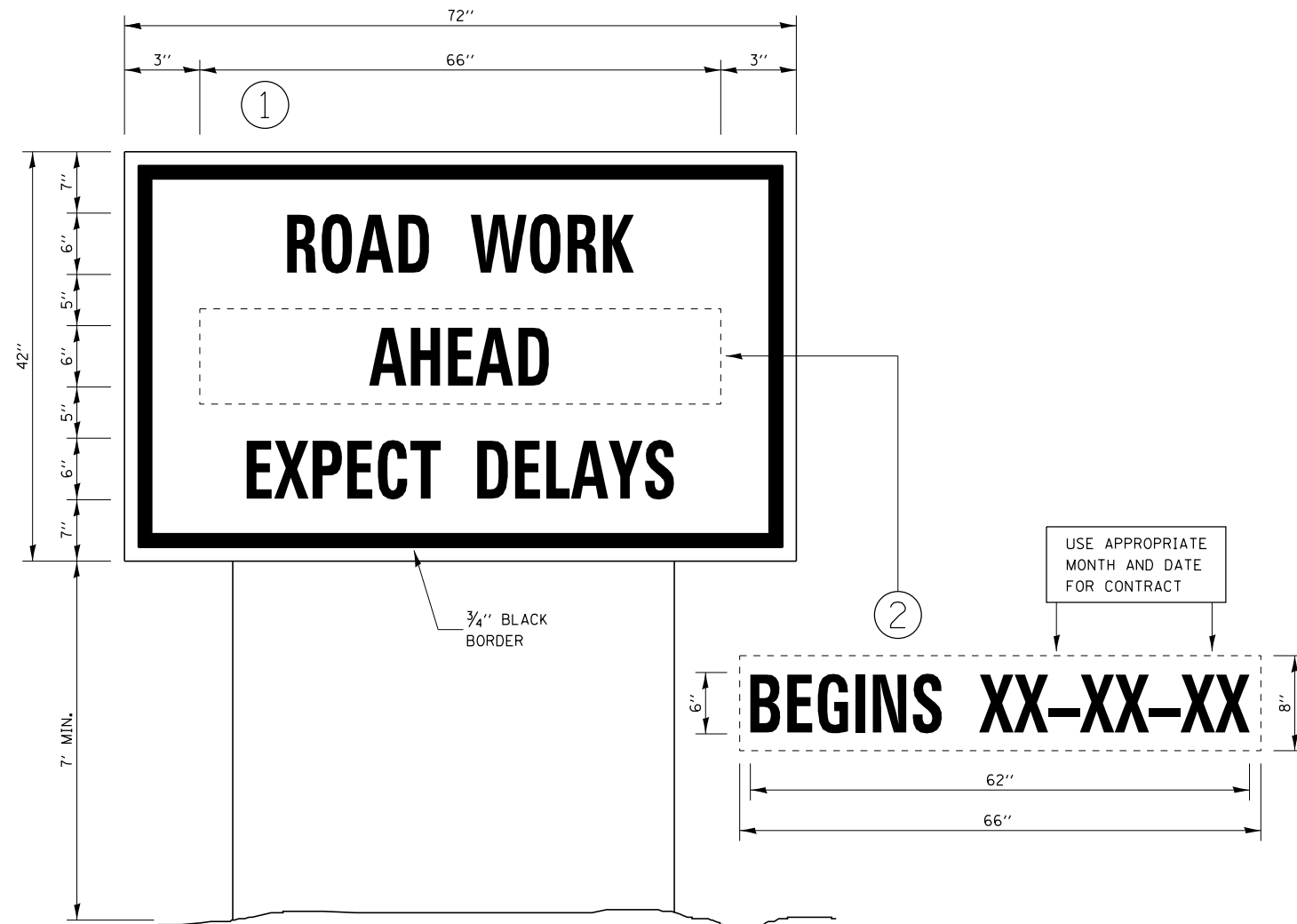
EXPANSION JOINT REHABILITATION DETAIL

STA 2145+09 AND STA 2146+85

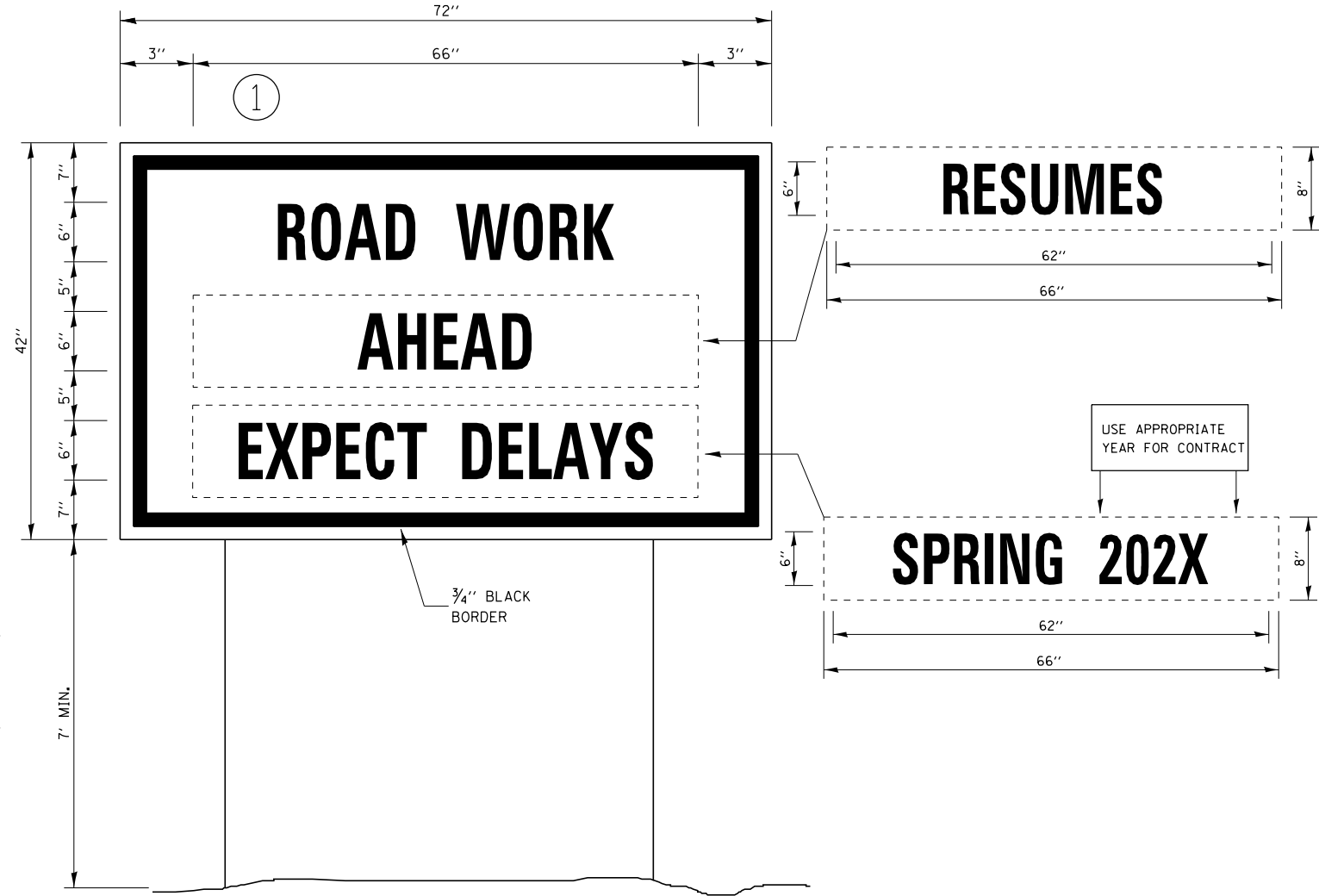
GENERAL NOTES:

1. THE NEW HMA OVERLAY SHALL BE SAWED, REMOVED AND THE JOINT AREA CLEANED. PRIOR TO PLACING THE HOT-POURED JOINT SEALER, THE JOINT SHALL BE BLOWN OUT WITH COMPRESSED AIR.
2. THIS WORK WILL BE PAID FOR AT THE CONTRACT UNIT PRICE PER FOOT FOR EXPANSION JOINT REHABILITATION.

| | | | | | | | | | | | |
|-------------|------------------------|------------|-----------|---|----------------|--------------------|----------------|----------|--------------|-----------|---------|
| FILE NAME = | USER NAME = corcoranlm | DESIGNED - | REVISED - | STATE OF ILLINOIS DEPARTMENT OF TRANSPORTATION | DETAILS | F.A.S. RTE. | SECTION | COUNTY | TOTAL SHEETS | SHEET NO. | |
| Default | 12/7/2020 | CHECKED - | REVISED - | | | 338 | (33,34)RS-5,SW | IROQUOIS | 23 | 22 | |
| | | DATE - | REVISED - | | | CONTRACT NO. 66K56 | | | | | |
| | | | | | | SCALE: | SHEET | OF | SHEETS | STA. | TO STA. |



TEMPORARY INFORMATION SIGNING



WINTER SHUT DOWN SIGNING

NOTES:

1. USE 6" D BLACK LETTERING ON FLOURESENT ORANGE BACKGROUND.
2. ERECT SIGNS AT LOCATIONS IN ADVANCE OF THE "ROAD CONSTRUCTION AHEAD" SIGNS AS DIRECTED BY THE ENGINEER.
3. ERECT SIGN ① WITH INSTALLED PANEL ② A MINIMUM OF ONE WEEK PRIOR TO THE START OF THE LANE CLOSURE.
4. REMOVE PANEL ② ON THAT DATE.
5. SEE SPECIAL PROVISION "TEMPORARY INFORMATION SIGNING" FOR ADDITIONAL INFORMATION.
6. WILL BE PAID FOR PER SQ FT AS "TEMPORARY INFORMATION SIGNING". EACH SIGN = 21 SQ FT AND THE DATE PANEL ② WILL NOT BE MEASURED SEPARATELY FOR PAYMENT.

| | | | | | | | | | | | | | | |
|-------------|------------------------|------------|-----------|---|---------------------------|-------|----|--------|-------------|---------|--------|----------------|-----------|-------|
| FILE NAME = | USER NAME = corcoranlm | DESIGNED - | REVISED - | STATE OF ILLINOIS DEPARTMENT OF TRANSPORTATION | DETAILS | | | | F.A.S. RTE. | SECTION | COUNTY | TOTAL SHEETS | SHEET NO. | |
| | | CHECKED - | REVISED - | | SCALE: | SHEET | OF | SHEETS | STA. | TO STA. | 338 | (33,34)RS-5,SW | IROQUOIS | 23 23 |
| | | DATE - | REVISED - | | CONTRACT NO. 66K56 | | | | | | | | | |
| | | | | | ILLINOIS FED. AID PROJECT | | | | | | | | | |