

STATE OF ILLINOIS
DEPARTMENT OF TRANSPORTATION

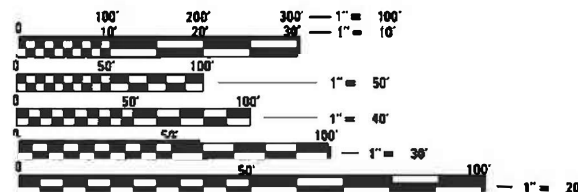
F.A. RTE.	SECTION	COUNTY	TOTAL SHEETS	SHEET NO.
VAR.	D5 TREE REMOVAL 2021-3	VARIOUS	15	1
		ILLINOIS	CONTRACT NO. 70F24	

FOR INDEX OF SHEETS, SEE SHEET NO. 2
FOR SUMMARY OF QUANTITIES, SEE SHEET NO. 6

PROPOSED HIGHWAY PLANS

VARIOUS ROUTES
SECTION D5 TREE REMOVAL 2021-3
DISTRICT WIDE TREE REMOVAL
VARIOUS COUNTIES
VARIOUS LOCATIONS

C-95-037-21



FULL SIZE PLANS HAVE BEEN PREPARED USING STANDARD ENGINEERING SCALES. REDUCED SIZED PLANS WILL NOT CONFORM TO STANDARD SCALES. IN MAKING MEASUREMENTS ON REDUCED PLANS, THE ABOVE SCALES MAY BE USED.

J.U.L.I.E.
JOINT UTILITY LOCATION INFORMATION FOR EXCAVATORS
1-800-892-0123
OR 811

SEE LOCATION MAPS
SHEET NO. 3 - 5

PROJECT ENGINEER: JASON W. STULTS
DESIGNER: KEVIN KNOEPFEL
PHONE: (217)465-4181
CONTRACT NO. 70F24

GROSS LENGTH = 21,512 FT. = 4.074 MILE
NET LENGTH = 21,512 FT. = 4.074 MILE

STATE OF ILLINOIS
DEPARTMENT OF TRANSPORTATION

SUBMITTED 12/10 2020
Kenneth A. Harmsworth
REGIONAL ENGINEER

January 29, 2021
Scott A. Elk
ENGINEER OF DESIGN AND ENVIRONMENT

January 29, 2021
James J. Gu
DIRECTOR OF HIGHWAYS PROJECT IMPLEMENTATION 13

PRINTED BY THE AUTHORITY
OF THE STATE OF ILLINOIS

INDEX OF SHEETS

<u>SHEET NO.</u>	<u>DESCRIPTION</u>
1	COVER SHEET
2	INDEX OF SHEETS, HIGHWAY STANDARDS, AND GENERAL NOTES
3 TO 5	LOCATION MAPS
6	SUMMARY OF QUANTITIES
7	SCHEDULE OF QUANTITIES
8 TO 15	PLAN SHEETS

HIGHWAY STANDARDS

<u>STANDARD</u>	<u>DESCRIPTION</u>
000001-08	STANDARD SYMBOLS, ABBREVIATIONS AND PATTERNS
001006	DECIMAL OF AN INCH AND OF A FOOT
701001-02	OFF-ROAD OPERATIONS, 2L, 2W, MORE THAN 15' (4.5 m) AWAY
701006-05	OFF-ROAD OPERATIONS, 2L, 2W, 15' (4.5 m) TO 24" (600 mm) FROM PAVEMENT EDGE
701101-05	OFF-RD OPERATIONS, MULTILANE, 15' (4.5m) TO 24" (600 mm) FROM PAVEMENT EDGE
701106-02	OFF-RD OPERATIONS, MULTILANE, MORE THAN 15' (4.5 m) AWAY
701201-05	LANE CLOSURE, 2L, 2W, DAY ONLY, FOR SPEEDS ≥ 45 MPH
701901-08	TRAFFIC CONTROL DEVICES

GENERAL NOTES

G.N.-100A
ELECTRONIC FILES AND/OR ELECTRONIC SURVEY INFORMATION INCLUDING CADD FILES WILL NOT BE AVAILABLE TO THE CONTRACTOR.

G.N.-201
TREES THAT INTERFERE WITH THE CONSTRUCTION OPERATIONS SHALL BE REMOVED AS DIRECTED BY THE ENGINEER. ANY TREE DUE TO ITS LOCATION AND DEEMED SUITABLE FOR SAVING BY THE ENGINEER SHALL BE PROTECTED DURING CLEARING AND SUBSEQUENT CONSTRUCTION OPERATIONS.

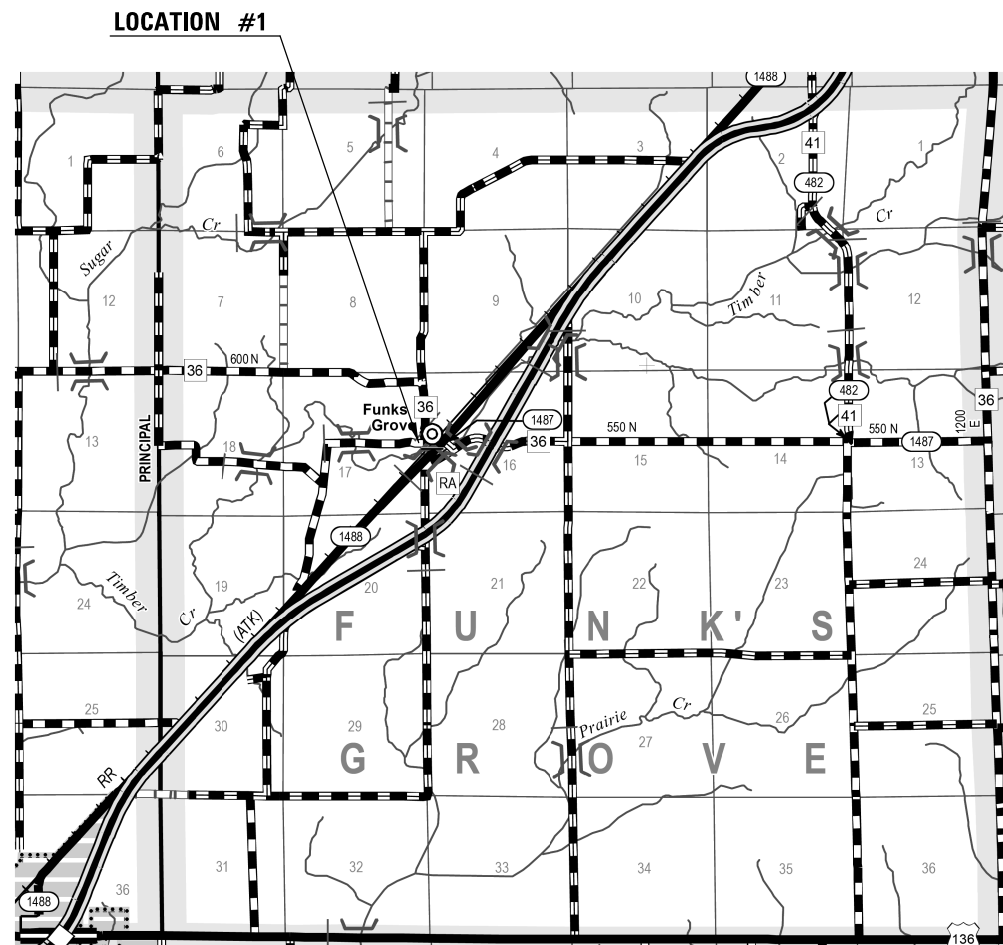
G.N.-250C-SPL
TEMPORARY EROSION CONTROL SEEDING IS INCLUDED IN THIS CONTRACT TO SEED DISTURBED EARTH DURING TIME PERIODS WHEN PERMANENT SEEDING IS NOT ALLOWED. SOME OR ALL OF THE TEMPORARY EROSION CONTROL SEEDING WILL BE DELETED IF IT IS POSSIBLE TO PLACE PERMANENT SEEDING ON EARTH AT THE TIME OF THEIR COMPLETION

NO COMMITMENTS

MODEL: \\MODELNAME\$
FILE NAME: P:\p19191901.dwg
PROJECT: 70F24\CD\DATA\CADD\GENERAL NOTES.DWG
PROJECT: 70F24\CD\DATA\CADD\GENERAL NOTES.DWG

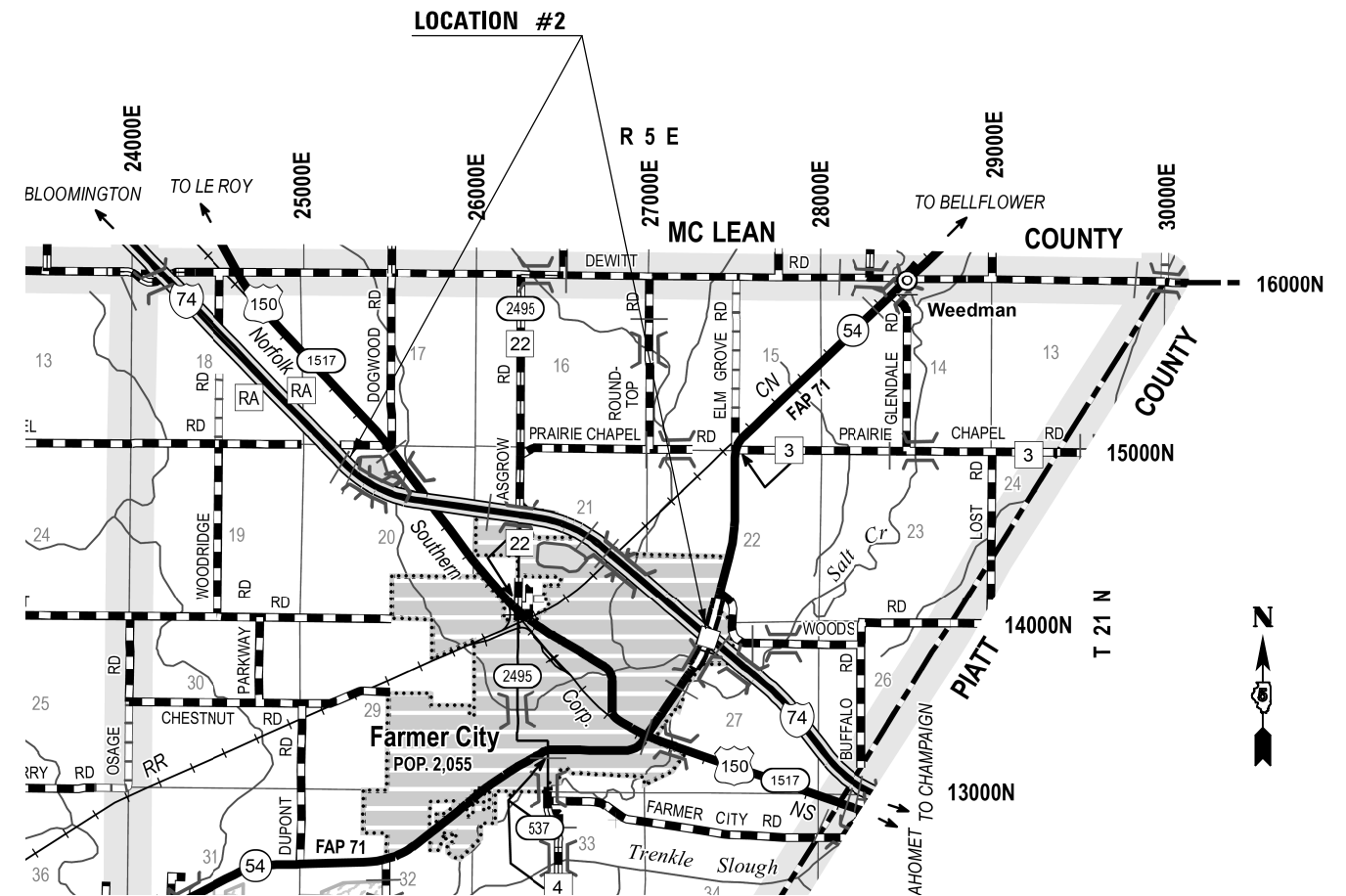
USER NAME = plersonbr PLOT SCALE = 40.0000' / in. PLOT DATE = 12/11/2020	DESIGNED - DRAWN - CHECKED - DATE -	REVISED - REVISED - REVISED + REVISED +	STATE OF ILLINOIS DEPARTMENT OF TRANSPORTATION	INDEX OF SHEETS, HIGHWAY STANDARDS & GENERAL NOTES	SCALE: NONE	SHEET 1 OF 1 SHEETS	STA. TO STA.	F.A. RTE. SECTION COUNTY TOTAL SHEETS SHEET NO. VAR. D5 TREE REMOVAL 2021-3 VAR. 1 1 CONTRACT NO. 70F24 ILLINOIS FED. AID PROJECT
--	--	--	---	---	-------------	---------------------	--------------	--

LOCATION #1
U.S. 66 (NEAR FUNKS GROVE), MCLEAN COUNTY



TOWNSHIP: FUNKS GROVE T. 22 N. - R. 1 E.

LOCATION #2
I-74 (WEST OF FARMER CITY), DEWITT COUNTY



TOWNSHIP: SANTA ANNA T. 21 N. - R. 5 E.

MODEL: I:\MODEL\NAME
 FILE: NAME: P:\pub\mcom\m\da\illinois.gov\PI\DOT\Documents\DOT_Offices\Dir\ct 5\Projects\0570F24\CAD\Drawn\CAD\Revised\0570F24-Plt-Location.dgn

USER NAME = piersonbr	DESIGNED -	REVISED -
	DRAWN -	REVISED -
PLOT SCALE = 40,0000 ' / in.	CHECKED -	REVISED -
PLOT DATE = 12/11/2020	DATE -	REVISED -

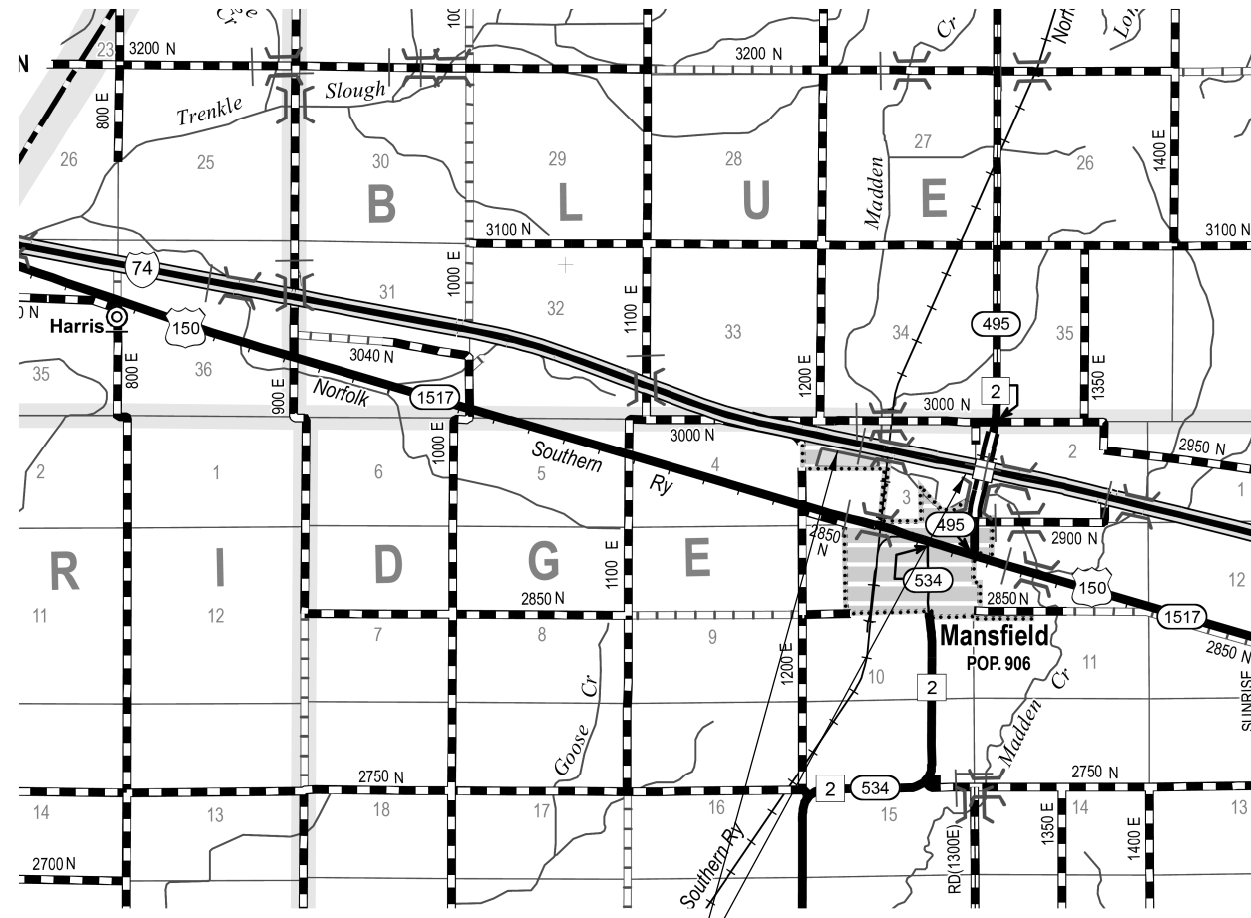
STATE OF ILLINOIS
DEPARTMENT OF TRANSPORTATION

LOCATION MAPS
LOCATIONS 1 & 2

SCALE: NONE SHEET 1 OF 3 SHEETS STA. TO STA.

F.A. RTE.	SECTION	COUNTY	TOTAL SHEETS	SHEET NO.
VAR.	D5 TREE REMOVAL 2021-3	VAR.	15	3
CONTRACT NO. 70F24			ILLINOIS FED. AID PROJECT	

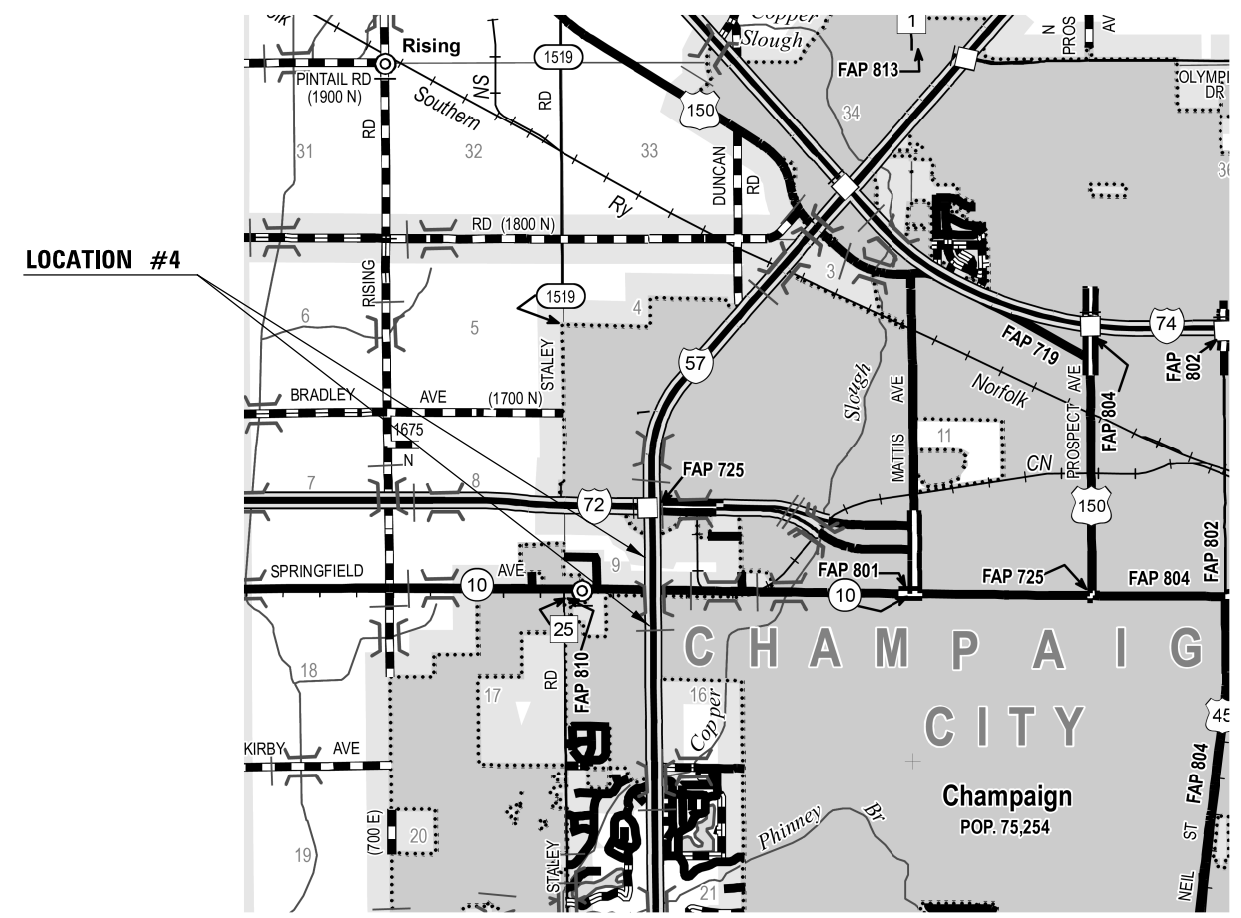
LOCATION #3
I-74 (WEST OF MANSFIELD), PIATT COUNTY



LOCATION #3

TOWNSHIP: BLUE RIDGE T. 21 N. - R. 6 E

LOCATION #4
I-57 (NORTH & SOUTH OF IL 10), CHAMPAIGN COUNTY



LOCATION #4

TOWNSHIP: CHAMPAIGN & CHAMPAIGN CITY T. 19 N. - R. 6 E

MODEL: \\MODEL\NAME
 FILE: \\NAME: \\pub\hmm\com\ada\illinois\gov\PIATT\DOT\Documents\DOT_Offices\Bldg\570F24\I-74-BlueRidge.dgn

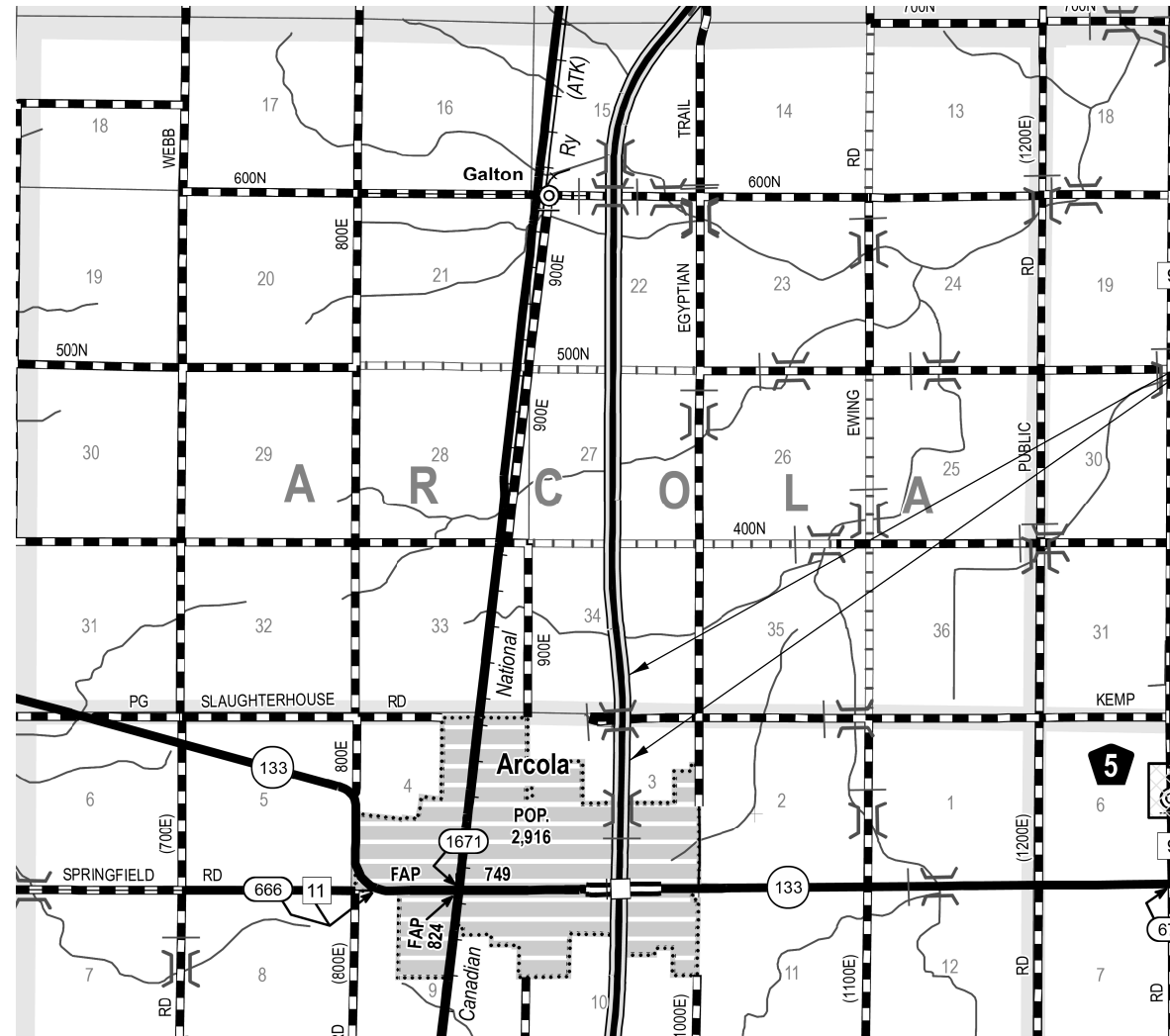
USER NAME = piersonbr	DESIGNED -	REVISED -
	DRAWN -	REVISED -
PLOT SCALE = 40,0000' / in.	CHECKED -	REVISED -
PLOT DATE = 12/11/2020	DATE -	REVISED -

STATE OF ILLINOIS
DEPARTMENT OF TRANSPORTATION

LOCATION MAPS			
LOCATIONS 3 & 4			
SCALE: NONE	SHEET 2	OF 3 SHEETS	STA. TO STA.

F.A. RTE.	SECTION	COUNTY	TOTAL SHEETS	SHEET NO.
VAR.	D5 TREE REMOVAL 2021-3	VAR.	15	4
			CONTRACT NO. 70F24	
		ILLINOIS	FED. AID PROJECT	

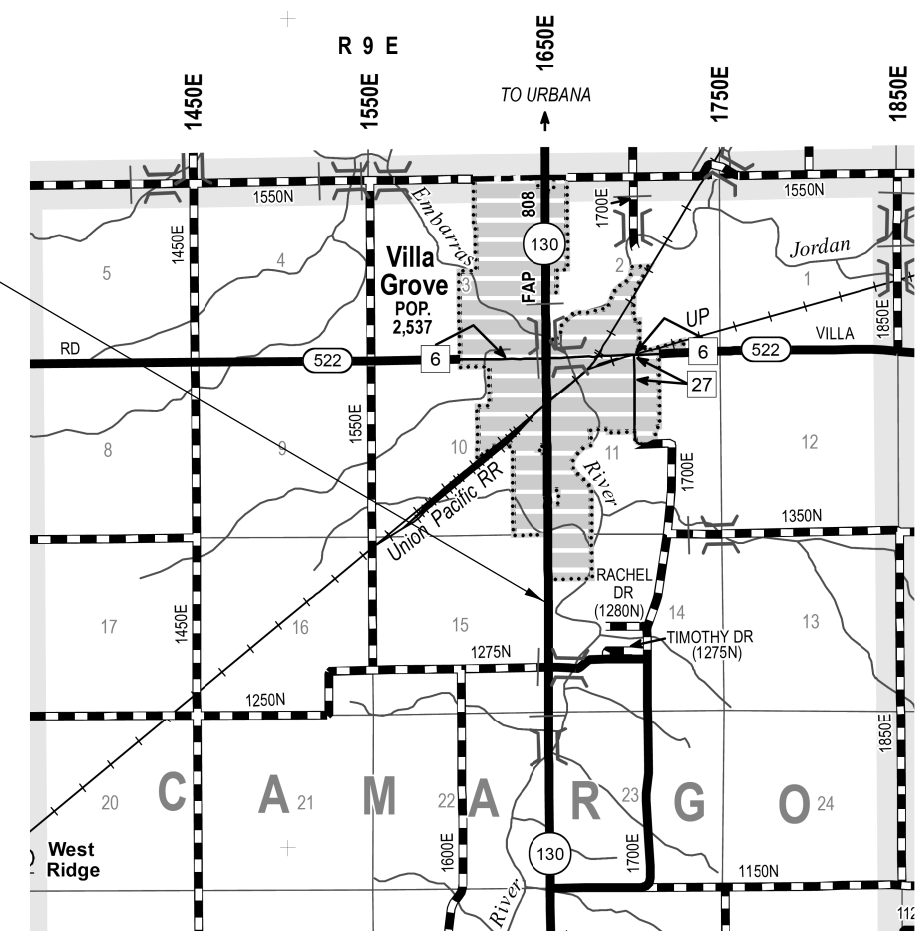
LOCATION #5
I-57 (NORTH OF ARCOLA), DOUGLAS COUNTY



LOCATION #5

TOWNSHIP: ARCOLA T.14 N. - R. 8 E

LOCATION #6
IL 130 (SOUTH OF VILLA GROVE), DOUGLAS COUNTY



LOCATION #6

TOWNSHIP: CAMARGO T. 16 N. - R. 8 E

STATE OF ILLINOIS
DEPARTMENT OF TRANSPORTATION

LOCATION MAPS
LOCATIONS 5 & 6

SCALE: NONE SHEET 3 OF 3 SHEETS STA. TO STA.

F.A. RTE.	SECTION	COUNTY	TOTAL SHEETS	SHEET NO.
VAR.	D5 TREE REMOVAL 2021-3	VAR.	15	5
			CONTRACT NO. 70F24	
		ILLINOIS	FED. AID PROJECT	

MODEL: \\MODEL\MAT\...
 FILE NAME: ...
 PROJECT: ...
 DATE: 12/11/2020

SUMMARY OF QUANTITIES

	LOCATION 1,2,3,5,6	LOCATION 4
LOCATION OF WORK :	VARIOUS	VARIOUS
	RURAL	URBAN
COUNTY :	VARIOUS	VARIOUS
FUNDING BREAKOUT :	100% STATE	100% STATE
CONSTRUCTION TYPE CODE :	0031	0031

CODE NO.	PAY ITEM	UNIT	TOTAL QUANTITY	QUANTITY	QUANTITY
20100500	TREE REMOVAL, ACRES	ACRE	27.50	24.00	3.50
25000310	SEEDING, CLASS 4	ACRE	27.50	24.00	3.50
25000320	SEEDING, CLASS 5	ACRE	27.50	24.00	3.50
25100115	MULCH, METHOD 2	ACRE	27.50	24.00	3.50
28000250	TEMPORARY EROSION CONTROL SEEDING	POUND	11,000	9,600	1,400
67100100	MOBILIZATION	L SUM	1.00	.0.8	0.20

MODEL: \\MODEL\MRHS
 FILE NAME: P:\pub\mcomad\at\illinois.gov\RWIDOT\Documents\DOT_Offices\District 5\Projects\0570F24\CAD\00Data\CAD\Recess\0570F24-rh-500.dgn

USER NAME = piersonbr	DESIGNED -	REVISED -
	DRAWN -	REVISED -
PLOT SCALE = 40.0000 ' / in.	CHECKED -	REVISED -
PLOT DATE = 12/11/2020	DATE -	REVISED -

**STATE OF ILLINOIS
DEPARTMENT OF TRANSPORTATION**

SUMMARY OF QUANTITIES			
SCALE: NONE	SHEET 1 OF 1 SHEETS	STA.	TO STA.

F.A. RTE.	SECTION	COUNTY	TOTAL SHEETS	SHEET NO.
VAR.	D5 TREE REMOVAL 2021-3	VAR.	15	6
			CONTRACT NO. 70F24	
ILLINOIS FED. AID PROJECT				

SCHEDULES

SEEDING SCHEDULE

LOCATION			25000310	25000320	28000250	25100115
			SEEDING, CLASS 4	SEEDING, CLASS 5	TEMPORARY EROSION CONTROL SEEDING**	MULCH, METHOD 2
			ACRE*	ACRE*	POUND	ACRE*
LOCATION 1 US 66 SOUTHBOUND (FUNKS GROVE)		RURAL	1.25	1.25	500.00	1.25
LOCATION 2 I-74 WB (FARMER CITY)		RURAL	9.25	9.25	3700.00	9.25
LOCATION 3 I-74 WB (MANSFIELD)		RURAL	5.25	5.25	2100.00	5.25
LOCATION 4 I-57 NORTHBOUND AND SOUTHBOUND (Over IL 10)		URBAN	3.50	3.50	1400.00	3.50
LOCATION 5 I-57 NORTHBOUND AND SOUTHBOUND (ARCOLA)		RURAL	7.25	7.25	2900.00	7.25
LOCATION 6 IL 130 SOUTHBOUND (VILLA GROVE)		RURAL	1.00	1.00	400.00	1.00
		RURAL	TOTAL=	24.00	9600.00	24.00
		URBAN	TOTAL=	3.50	1400.00	3.50
FINAL TOTAL =			27.50	27.50	11000.00	27.50

Notes: *Area calculated in CAD and Google Earth - rounded quantity
 ** Temporary Erosion Control Seeding application rate of 100 lbs/acre and 4 applications

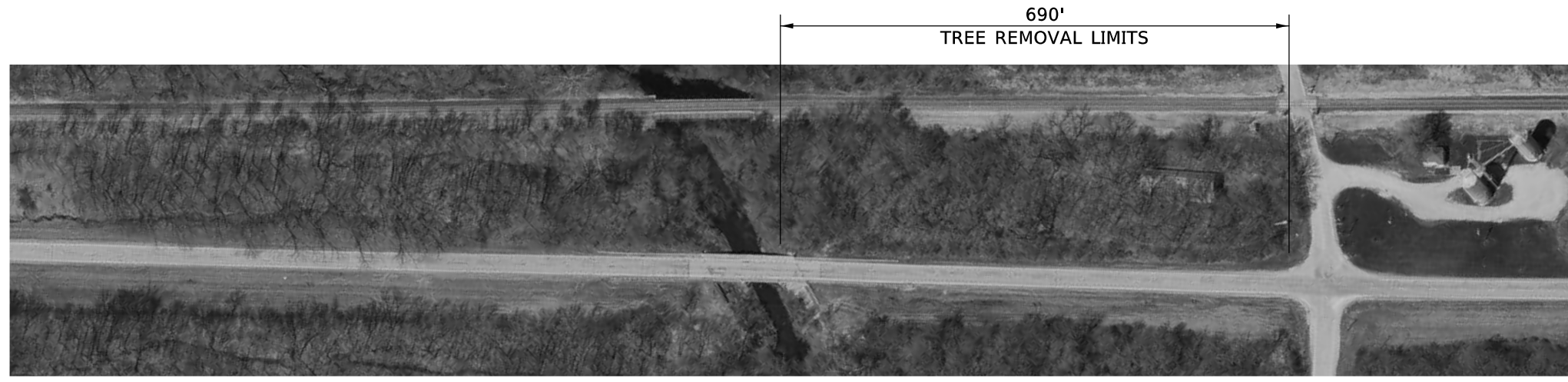
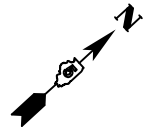
TREE REMOVAL SCHEDULE

LOCATION			20100500
			TREE REMOVAL
			ACRE*
LOCATION 1 US 66 SOUTHBOUND (FUNKS GROVE)		RURAL	1.25
LOCATION 2 I-74 WB (FARMER CITY)		RURAL	9.25
LOCATION 3 I-74 WB (MANSFIELD)		RURAL	5.25
LOCATION 4 I-57 NORTHBOUND AND SOUTHBOUND (Over IL 10)		URBAN	3.50
LOCATION 5 I-57 NORTHBOUND AND SOUTHBOUND (ARCOLA)		RURAL	7.25
LOCATION 6 IL 130 SOUTHBOUND (VILLA GROVE)		RURAL	1.00
		RURAL	TOTAL=
		URBAN	TOTAL=
FINAL TOTAL =			27.50

*Note: Measured in CAD and Google Maps - rounded quantity

MODEL: I:\MODEL\MHFS
FILE: MHFS_Plan\Illuminoma\data\illinois.gov\RWIDOT\Documents\DOT_Offices\Ildot\I-57\Projects\I-57\70F24\I-57-Plan-Set\I-57-Plan-Set.dwg

LOCATION #1
U.S. 66 NEAR FUNKS GROVE
MCLEAN COUNTY



MODEL: \\MODEL\MRHS
 FILE: MRHS_Plan\p1\mcomad.ctb\Illinois.gov\PWIDOT\Documents\DOT_Offices\District 5\Projects\0570F24\CAD\Drawings\0570F24-rt-Rlan.dgn

USER NAME = p1ersonbr	DESIGNED -	REVISED -
	DRAWN -	REVISED -
PLOT SCALE = 200.0000 ' / in.	CHECKED -	REVISED -
PLOT DATE = 12/11/2020	DATE -	REVISED -

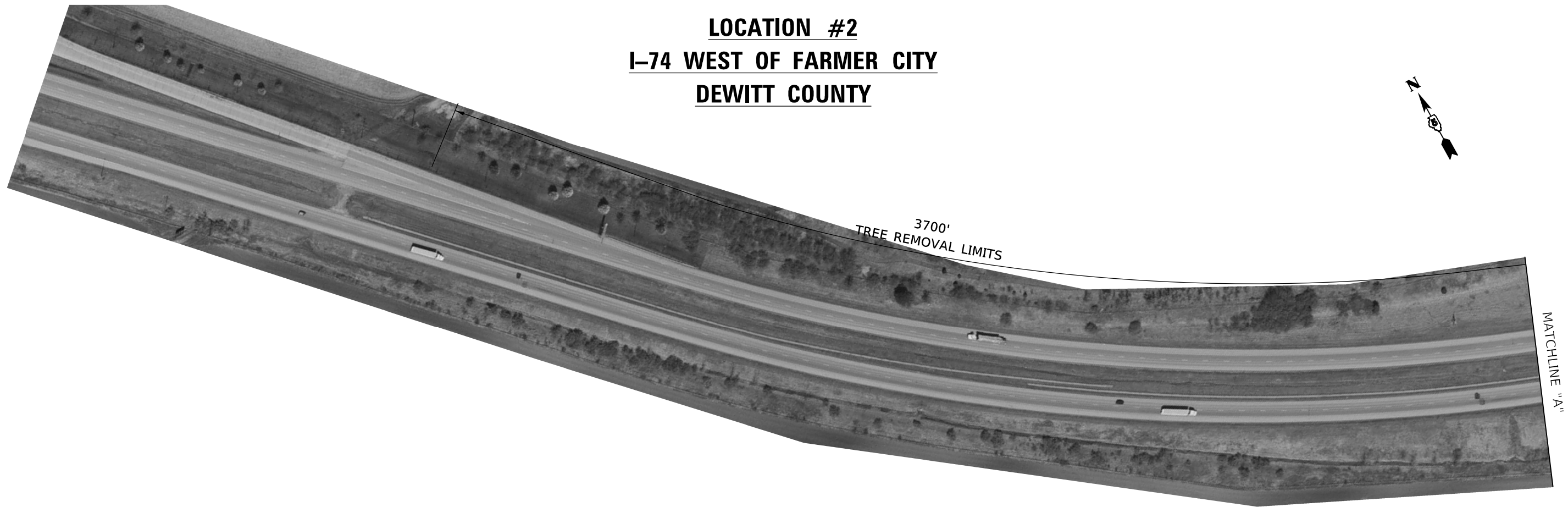
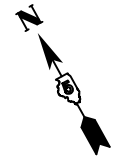
STATE OF ILLINOIS
DEPARTMENT OF TRANSPORTATION

LOCATION #1

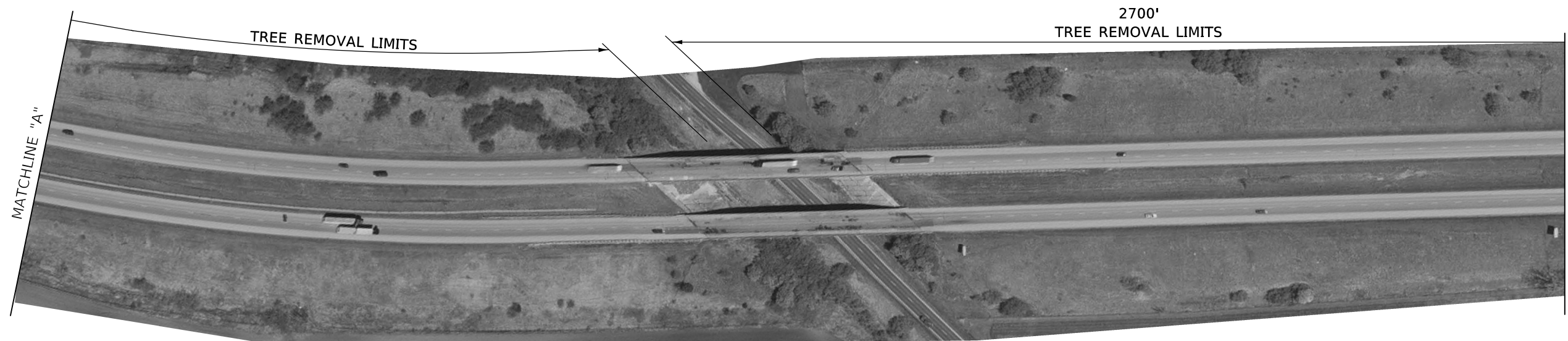
SCALE: 1" = 100' SHEET 1 OF 3 SHEETS STA. TO STA.

F.A. RTE.	SECTION	COUNTY	TOTAL SHEETS	SHEET NO.
VAR.	D5 TREE REMOVAL 2021-3	VAR.	15	8
			CONTRACT NO. 70F24	
		ILLINOIS	FED. AID PROJECT	

LOCATION #2
I-74 WEST OF FARMER CITY
DEWITT COUNTY



LOCATION #2
I-74 WEST OF FARMER CITY
DEWITT COUNTY



MODEL: \\MODEL\MAR\F...
 FILE: \\MAR\F...

USER NAME = piersonbr	DESIGNED -	REVISED -
	DRAWN -	REVISED -
PLOT SCALE = 200,0000' / in.	CHECKED -	REVISED -
PLOT DATE = 12/11/2020	DATE -	REVISED -

STATE OF ILLINOIS
DEPARTMENT OF TRANSPORTATION

LOCATION #2

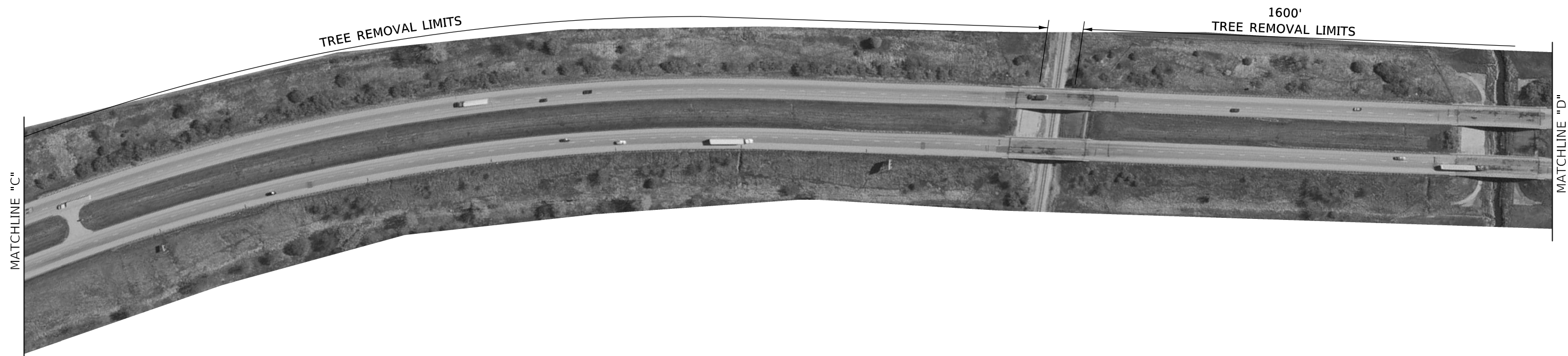
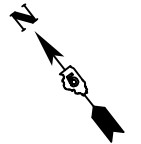
SCALE: 1" = 100' SHEET 1 OF 3 SHEETS STA. TO STA.

F.A. RTE.	SECTION	COUNTY	TOTAL SHEETS	SHEET NO.
VAR.	D5 TREE REMOVAL 2021-3	VAR.	15	9
ILLINOIS FED. AID PROJECT			CONTRACT NO. 70F24	

LOCATION #2
I-74 WEST OF FARMER CITY
DEWITT COUNTY



LOCATION #2
I-74 WEST OF FARMER CITY
DEWITT COUNTY



MODEL: \\MODEL\MRFE
 FILE: \\MRFE:proj\01\mcom\m\dat\illinois\gov\RWIDOT\Documents\DOT_Offices\District 5\Projects\0570F24\ACADD\B\CAD\Recess\0570F24-rt-Plan.dgn

USER NAME = piersonbr	DESIGNED -	REVISED -
	DRAWN -	REVISED -
PLOT SCALE = 200,0000' / in.	CHECKED -	REVISED -
PLOT DATE = 12/11/2020	DATE -	REVISED -

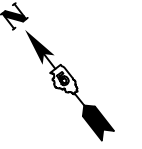
STATE OF ILLINOIS
DEPARTMENT OF TRANSPORTATION

LOCATION #2

SCALE: 1" = 100' SHEET 2 OF 3 SHEETS STA. TO STA.

F.A. RTE.	SECTION	COUNTY	TOTAL SHEETS	SHEET NO.
VAR.	D5 TREE REMOVAL 2021-3	VAR.	15	10
			CONTRACT NO. 70F24	
		ILLINOIS	FED. AID PROJECT	

LOCATION #2
I-74 WEST OF FARMER CITY
DEWITT COUNTY



MODEL: \\MODELNAME
 FILE NAME: P:\pub\mcomas\data\illinois\pwr\DOT\Documents\DOT_Offices\District 5\Projects\ID570F24\CADD\B3\CADD\Sheet\ID570F24-11-11-2020.dgn

USER NAME = ppersonbr	DESIGNED -	REVISED -
	DRAWN -	REVISED -
PLOT SCALE = 200,0000 ' / in.	CHECKED -	REVISED -
PLOT DATE = 12/11/2020	DATE -	REVISED -

STATE OF ILLINOIS
DEPARTMENT OF TRANSPORTATION

LOCATION #2

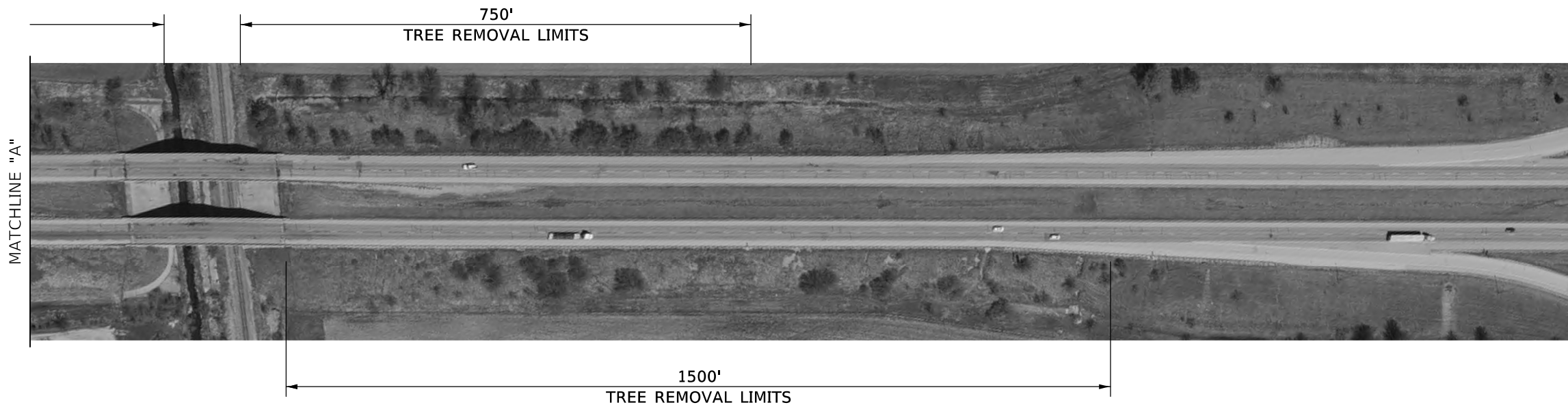
SCALE: 1" = 100' SHEET 3 OF 3 SHEETS STA. TO STA.

F.A. RTE.	SECTION	COUNTY	TOTAL SHEETS	SHEET NO.
VAR.	D5 TREE REMOVAL 2021-3	VAR.	15	11
			CONTRACT NO. 70F24	
ILLINOIS FED. AID PROJECT				

LOCATION #3
I-74 WEST OF MANSFIELD
PIATT COUNTY



LOCATION #3
I-74 WEST OF MANSFIELD
PIATT COUNTY



MODEL: \\MODEL\MRF5
 FILE: \\mrf5_piatt\pblm\com\m\da\illinois\pwr\PIATT\Documents\DOT_Offices\Dir\dtc_5\Projects\0570F24\ICAD\0570F24-ICAD\0570F24-ICAD.dgn

USER NAME = piersonbr	DESIGNED -	REVISED -
	DRAWN -	REVISED -
PLOT SCALE = 200.0000' / in.	CHECKED -	REVISED -
PLOT DATE = 12/11/2020	DATE -	REVISED -

STATE OF ILLINOIS
DEPARTMENT OF TRANSPORTATION

LOCATION #3			
SCALE: 1" = 100'	SHEET 1	OF 1 SHEETS	STA. TO STA.

F.A. RTE.	SECTION	COUNTY	TOTAL SHEETS	SHEET NO.
VAR.	D5 TREE REMOVAL 2021-3	VAR.	15	12
			CONTRACT NO. 70F24	
		ILLINOIS	FED. AID PROJECT	

LOCATION #4
I-57 NORTH & SOUTH OF IL 10
CHAMPAIGN COUNTY



MODEL: \\MODEL\MRHS
 FILE: MRHS_Plan\champaign\70F24\CADD\Drawings\CADD\Drawings\70F24-11-11-2020.dwg

USER NAME = piersonbr	DESIGNED -	REVISED -
	DRAWN -	REVISED -
PLOT SCALE = 200,0000 ' / in.	CHECKED -	REVISED -
PLOT DATE = 12/11/2020	DATE -	REVISED -

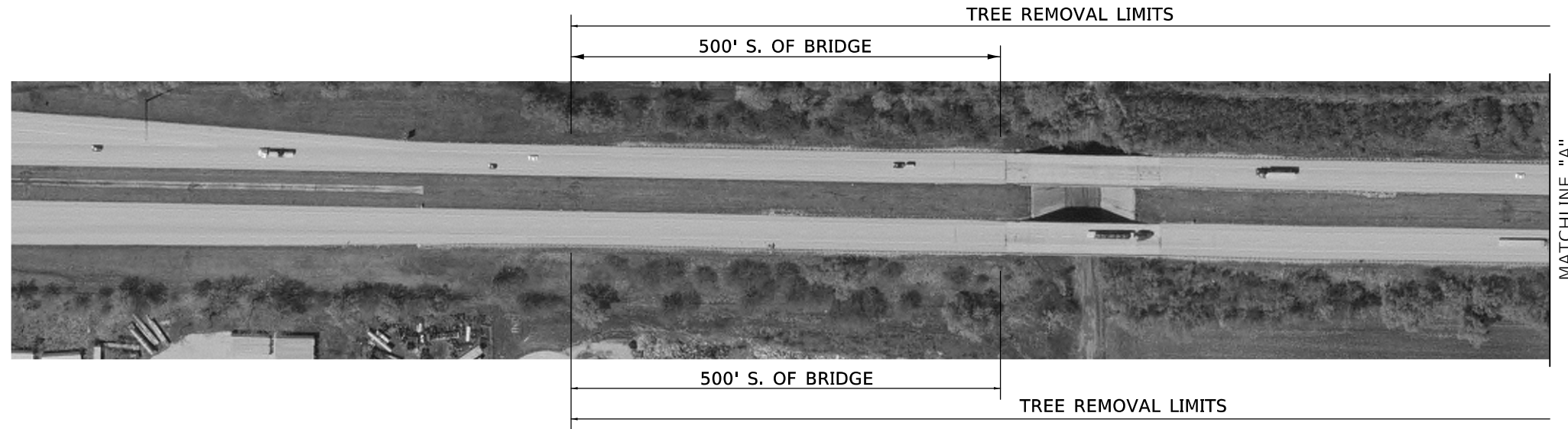
STATE OF ILLINOIS
DEPARTMENT OF TRANSPORTATION

LOCATION #4

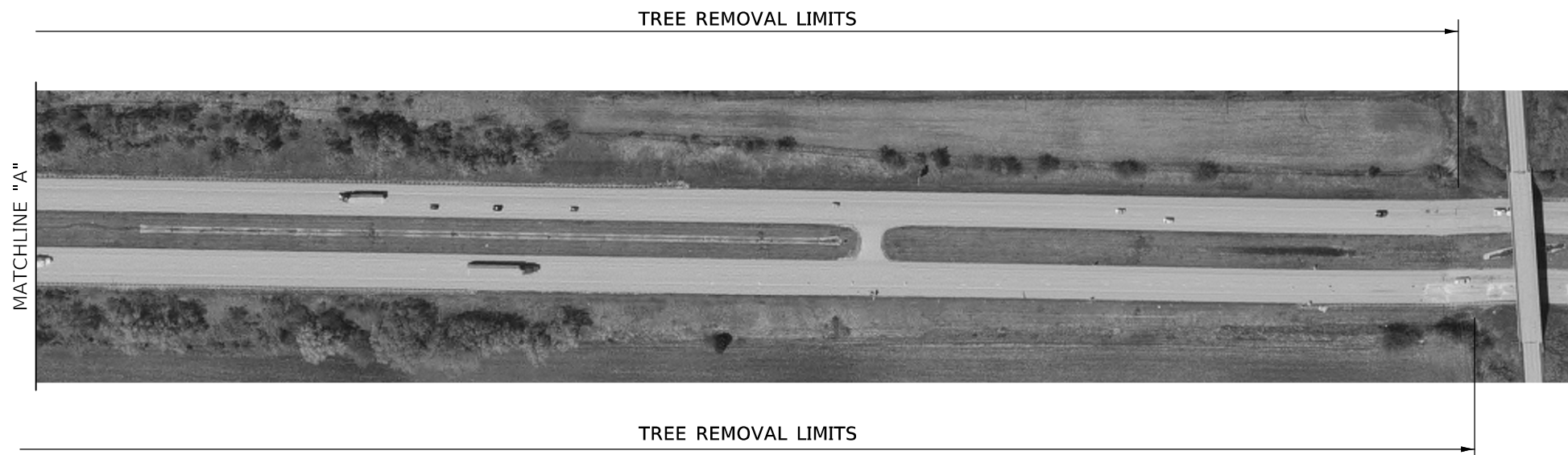
SCALE: 1" = 100' SHEET 1 OF 1 SHEETS STA. TO STA.

F.A. RTE.	SECTION	COUNTY	TOTAL SHEETS	SHEET NO.
VAR.	D5 TREE REMOVAL 2021-3	VAR.	15	13
			CONTRACT NO. 70F24	
		ILLINOIS	FED. AID PROJECT	

LOCATION #5
I-57 NORTH OF ARCOLA
DOUGLAS COUNTY



LOCATION #5
I-57 NORTH OF ARCOLA
DOUGLAS COUNTY



MODEL: s:\MODEL\MAR15
 FILE: MAR15_2020\Illinois.gov\PIWIDOT\Documents\DOT_Offices\District 5\Projects\0570F24\ICAD\0570F24-ICAD\0570F24-ICAD.dgn

USER NAME = piersonbr	DESIGNED -	REVISED -
	DRAWN -	REVISED -
PLOT SCALE = 200,0000 ' / in.	CHECKED -	REVISED -
PLOT DATE = 12/11/2020	DATE -	REVISED -

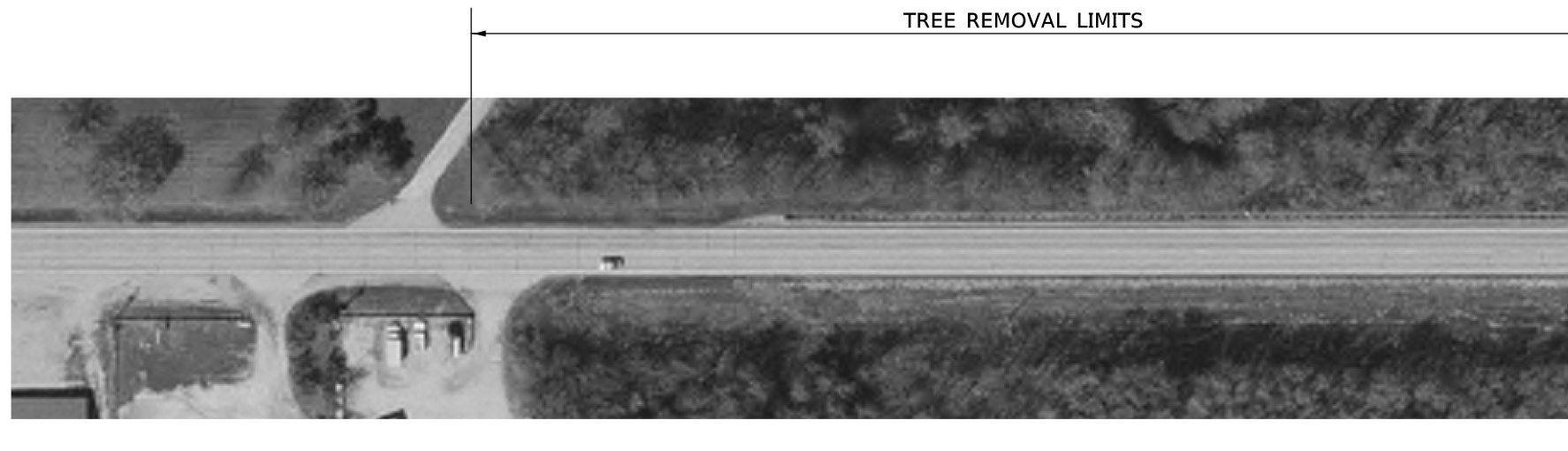
STATE OF ILLINOIS
DEPARTMENT OF TRANSPORTATION

LOCATION #5

SCALE: 1" = 100' SHEET 1 OF 1 SHEETS STA. TO STA.

F.A. RTE.	SECTION	COUNTY	TOTAL SHEETS	SHEET NO.
VAR.	D5 TREE REMOVAL 2021-3	VAR.	15	14
			CONTRACT NO. 70F24	
ILLINOIS FED. AID PROJECT				

**LOCATION #6
IL 130 SOUTH OF VILLA GROVE
DOUGLAS COUNTY**



**LOCATION #6
IL 130 SOUTH OF VILLA GROVE
DOUGLAS COUNTY**



MODEL: \\MODEL\MARF
FILE: \\MARF_Plan\blm\com\ma\dat\illinois\gov\PI\DOT\Documents\DOT_Offices\District 5\Projects\DS70F24\ICAD\DATA\CAD\Frees\DS70F24_rpt-Plan.dgn

USER NAME = ppersonbr	DESIGNED -	REVISED -
	DRAWN -	REVISED -
PLOT SCALE = 100.0000' / in.	CHECKED -	REVISED -
PLOT DATE = 12/11/2020	DATE -	REVISED -

**STATE OF ILLINOIS
DEPARTMENT OF TRANSPORTATION**

LOCATION #6

SCALE: 1" = 50' SHEET 1 OF 1 SHEETS STA. TO STA.

F.A. RTE.	SECTION	COUNTY	TOTAL SHEETS	SHEET NO.
VAR.	D5 TREE REMOVAL 2021-3	VAR.	15	15
CONTRACT NO. 70F24				
ILLINOIS FED. AID PROJECT				