

STATE OF ILLINOIS
DEPARTMENT OF TRANSPORTATION

F.A.S./F.A.U.	SECTION	COUNTY	TOTAL SHEETS	SHEET NO.
	59,60CJS-1	ILLINOIS	7	1
		CONTRACT NO. 76N73		
* 747/8956 ** JERSEY/MADISON				

FOR INDEX OF SHEETS, SEE SHEET NO. 2

BRIDGE OMISSIONS

STRUCTURE NO.	LENGTH
060-0343	242 FT.

TRAFFIC DATA

LOCATION	IL 109 TO CLIFTON TERRACE
2020 ADT	5400 (ESTIMATED)
2040 ADT	6200 (ESTIMATED)
MU%	1.1
SU%	4.2

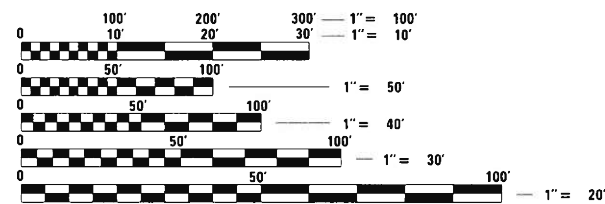
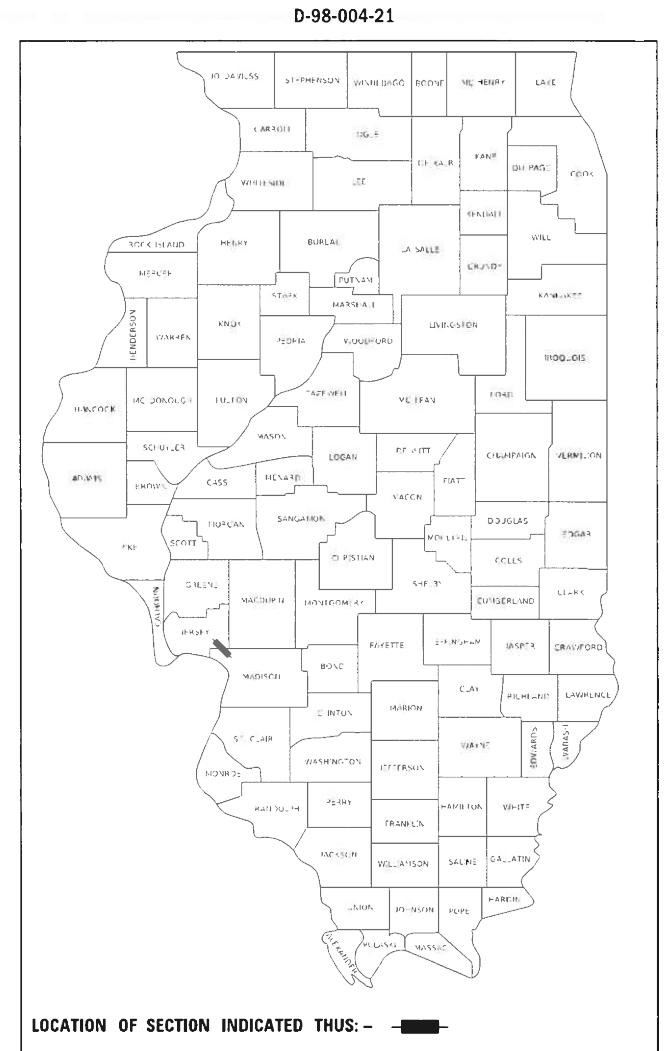
LOCATION	CLIFTON TERRACE TO STATEN DR.
2020 ADT	8500 (ESTIMATED)
2040 ADT	9700 (ESTIMATED)
MU%	1.5
SU%	4.8

LOCATION	STATEN DR. TO PIERCE LN.
2020 ADT	14400 (ESTIMATED)
2040 ADT	16700 (ESTIMATED)
MU%	1.3
SU%	3.8

PROPOSED HIGHWAY PLANS

FAS ROUTE 747/FAU ROUTE 8956 (IL 3)
SECTION 59,60CJS-1
PROJECT STP-5VSI(114)
CRACK & JOINT SEALING
JERSEY/MADISON COUNTY

C-98-030-21



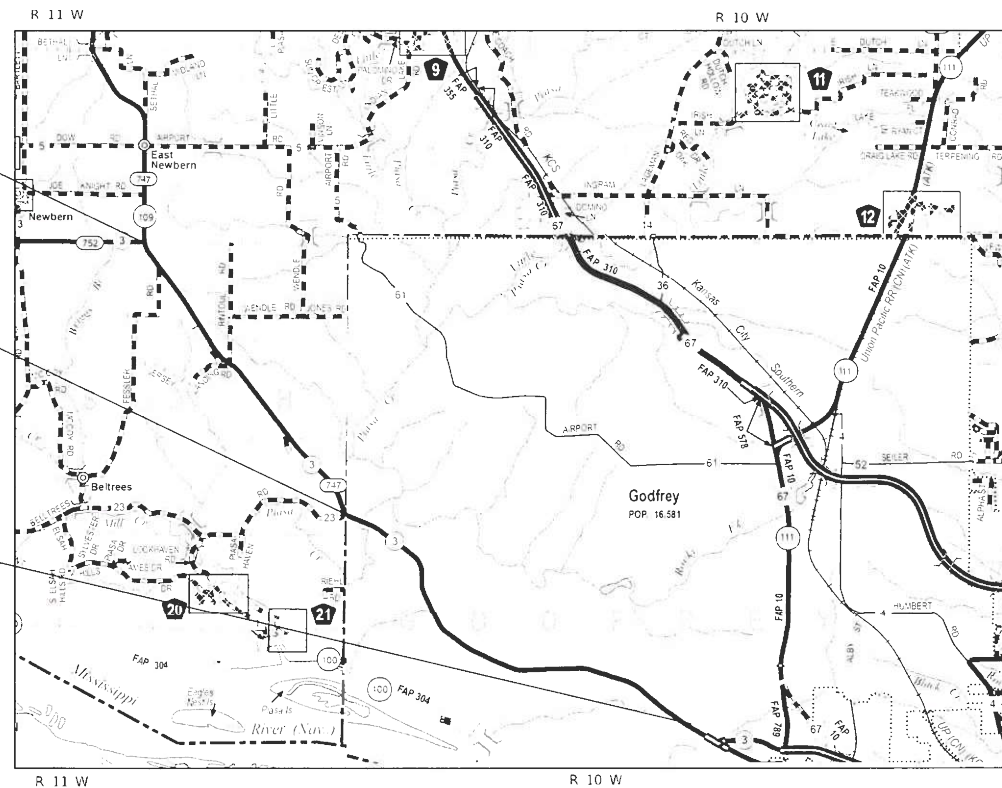
FULL SIZE PLANS HAVE BEEN PREPARED USING STANDARD ENGINEERING SCALES. REDUCED SIZED PLANS WILL NOT CONFORM TO STANDARD SCALES. IN MAKING MEASUREMENTS ON REDUCED PLANS, THE ABOVE SCALES MAY BE USED.

J.U.L.I.E.
JOINT UTILITY LOCATION INFORMATION FOR EXCAVATORS
1-800-892-0123
OR 811

END PROJECT
8.20 M.S.
LATITUDE: 38.999591
LONGITUDE: -90.314012

SN 060-0343
BRIDGE OMISSION

BEGIN PROJECT
0.0 M.S.
LATITUDE: 38.925790
LONGITUDE: -90.205712



LOCATION MAP

GROSS LENGTH = 43,296.0 FT. = 8.200 MILE

NET LENGTH = 43,054.0 FT. = 8.15 MILE

NOT TO SCALE

PROJECT ENGINEER: BILLIE OWEN (618)346-3209
PROJECT MANAGER: PHILLIP FREIMUTH (618)346-3194

CONTRACT NO. 76N73

STATE OF ILLINOIS
DEPARTMENT OF TRANSPORTATION

SUBMITTED Dec 1 2020
K. Roberts REGIONAL ENGINEER

January 29, 2021
S. E. A. Elk
ENGINEER OF DESIGN AND ENVIRONMENT

January 29, 2021
James J. Gu
DIRECTOR OF HIGHWAYS PROJECT IMPLEMENTATION

PRINTED BY THE AUTHORITY
OF THE STATE OF ILLINOIS

INDEX OF SHEETS

1. COVER
2. INDEX OF SHEETS, HIGHWAY STANDARDS, GENERAL NOTES & COMMITMENTS
3. SUMMARY OF QUANTITIES
4. LOCATION MAP
5. EXISTING TYPICAL SECTIONS
6. SCHEDULE OF QUANTITIES
7. CRACK AND JOINT SEALING DETAILS

HIGHWAY STANDARDS

000001-08	STANDARD SYMBOLS, ABBREVIATIONS AND PATTERNS
001006	DECIMAL OF AN INCH AND OF A FOOT
701001-02	OFF-RD OPERATIONS, 2L, 2W, MORE THAN 15' (4.5m) AWAY
701006-05	OFF-RD OPERATIONS, 2L, 2W, 15' (4.5M) TO 24" (600MM) FROM PAVEMENT EDGE
701201-05	LANE CLOSURE, 2L, 2W, DAY ONLY, FOR SPEEDS \geq 45 MPH
701301-04	LANE CLOSURE, 2L, 2W SHORT TERM OPERATIONS
701306-04	LANE CLOSURE, 2L, 2W, SLOW MOVING OPERATIONS DAY ONLY, FOR SPEEDS \geq 45 MPH
701311-03	LANE CLOSURE, 2L, 2W, SLOW MOVING OPERATIONS - DAY ONLY
701502-09	URBAN LANE CLOSURE, 2L, 2W WITH BI-DIRECTION LEFT TURN LANE
701901-08	TRAFFIC CONTROL DEVICES

GENERAL NOTES

1. UTILITIES KNOWN TO HAVE FACILITIES WITHIN THE PROJECT AREA ARE AS FOLLOWS:

UTILITY	ABOVE GROUND	BELOW GROUND
AMEREN ILLINOIS - (GAS & ELECTRIC)	X	X
AT&T ILLINOIS (COMMUNICATIONS)	X	X
CHARTER COMMUNICATIONS, INC. (CABLE TV)	X	X
VILLAGE OF GODFREY - (SANITARY SEWER)		X
ILLINOIS AMERICAN WATER COMPANY (WATER & SANITARY SEWER)		X
JERSEY COUNTY RURAL WATER COMPANY (WATER)		X
NUSTAR PIPELINE OPERATING PARTNERSHIP L.P. (PIPELINE)		X

2. NO SURVEY WAS PERFORMED FOR THIS PROJECT AND THE PLANS WERE CREATED USING MICROFILM AND FIELD MEASUREMENTS.
3. ALL TURF AREAS DISTURBED BY THE CONTRACTOR SHALL BE SEEDED WITH THE APPROPRIATE EROSION CONTROL AS DIRECTED BY THE ENGINEER AT THE CONTRACTOR'S EXPENSE.
4. ANY RAISED REFLECTIVE PAVEMENT MARKERS ENCOUNTERED SHALL BE LEFT IN PLACE. ROUTING SHALL BE GAPPED WHERE RAISED REFLECTIVE PAVEMENT MARKERS ARE ENCOUNTERED SO AS TO LEAVE THEM FUNCTIONAL.
5. THE RESIDENT ENGINEER/TECHNICIAN SHALL DETERMINE THE EXACT LOCATION WHERE CRACKS ARE TO BE ROUTED AND FILLED.
6. ESTIMATED CRACK FILLING APPLICATION RATE IS 0.40 LB/FT.
7. CARE SHALL BE TAKEN TO AVOID ALL PAVEMENT MARKINGS. ANY PAVEMENT MARKINGS DISTURBED FOR ANY REASON BY THE CONTRACTOR SHALL BE REPAIRED BY THE CONTRACTOR AT HIS OWN EXPENSE.
8. ALL STRUCTURES ARE OMITTED FROM THIS CONTRACT.
9. NO OVERNIGHT LANE CLOSURES WILL BE ALLOWED ON THIS PROJECT.
10. CHANGEABLE MESSAGE SIGNS ARE INCLUDED TO BE PLACED AT BOTH ENDS OF THE PROJECT AS DIRECTED BY THE ENGINEER.

COMMITMENTS

NONE

MODEL: Default
 FILE: \\nls1p1\pub\lansroom\data\illinois.gov\PHWDOT\Documents\IDOT_Offices\IDOT\B\Projects\IDOT\76N73\CADDData\CAD\Sheet\IDOT\76N73-shc-plan.dgn

* 747/8956
 ** JERSEY/MADISON

USER NAME = millerraj	DESIGNED -	REVISED -	STATE OF ILLINOIS DEPARTMENT OF TRANSPORTATION	INDEX OF SHEETS, HIGHWAY STANDARDS GENERAL NOTES & COMMITMENTS	F.A.S./ F.A.U.	SECTION	COUNTY	TOTAL SHEETS	SHEET NO.
PLOT SCALE = 100.2375 ' / in.	CHECKED -	REVISED -			*	59,60CJS-1	**	7	2
PLOT DATE = 11/30/2020	DATE -	REVISED -			CONTRACT NO. 76N73				
					SCALE:	SHEET 1	OF 1	SHEETS	STA.
					ILLINOIS		FED. AID PROJECT		

80% FED
20% STATE

CONSTRUCTION CODE

MADISON		JERSEY
ROADWAY	ROADWAY	ROADWAY
0005	0005	0005
URBAN	RURAL	RURAL

CODE NO.	ITEM	UNIT	TOTAL QUANTITY	ROADWAY 0005 URBAN	ROADWAY 0005 RURAL	ROADWAY 0005 RURAL
45100100	CRACK ROUTING (PAVEMENT)	FOOT	123098	73128	9293	40677
45100200	CRACK FILLING	POUND	49238	29251	3717	16270
67100100	MOBILIZATION	L SUM	1	0.5	0.1	0.4
70100450	TRAFFIC CONTROL AND PROTECTION, STANDARD 701201	L SUM	1	0.2	0.2	0.6
70100460	TRAFFIC CONTROL AND PROTECTION, STANDARD 701306	L SUM	1	0.2	0.2	0.6
∅ Z0076600	TRAINEES	HOUR	500	500		
70102622	TRAFFIC CONTROL AND PROTECTION, STANDARD 701502	L SUM	1	1		
∅ Z0076604	TRAINEES TRAINING PROGRAM GRADUATE	HOUR	500	500		
70107025	CHANGEABLE MESSAGE SIGN	CAL DA	28	14		14

∅ 0042

MODEL: Default
FILE: \\nrc\p\uplanroom\data\illinois.gov\PIWDOT\Documents\DOT_Offices\District 8\Projects\076N73\CADDData\CAD\pieces\076N73-shc-plan.dgn

REV. - MS

* 747/8956
** JERSEY/MADISON

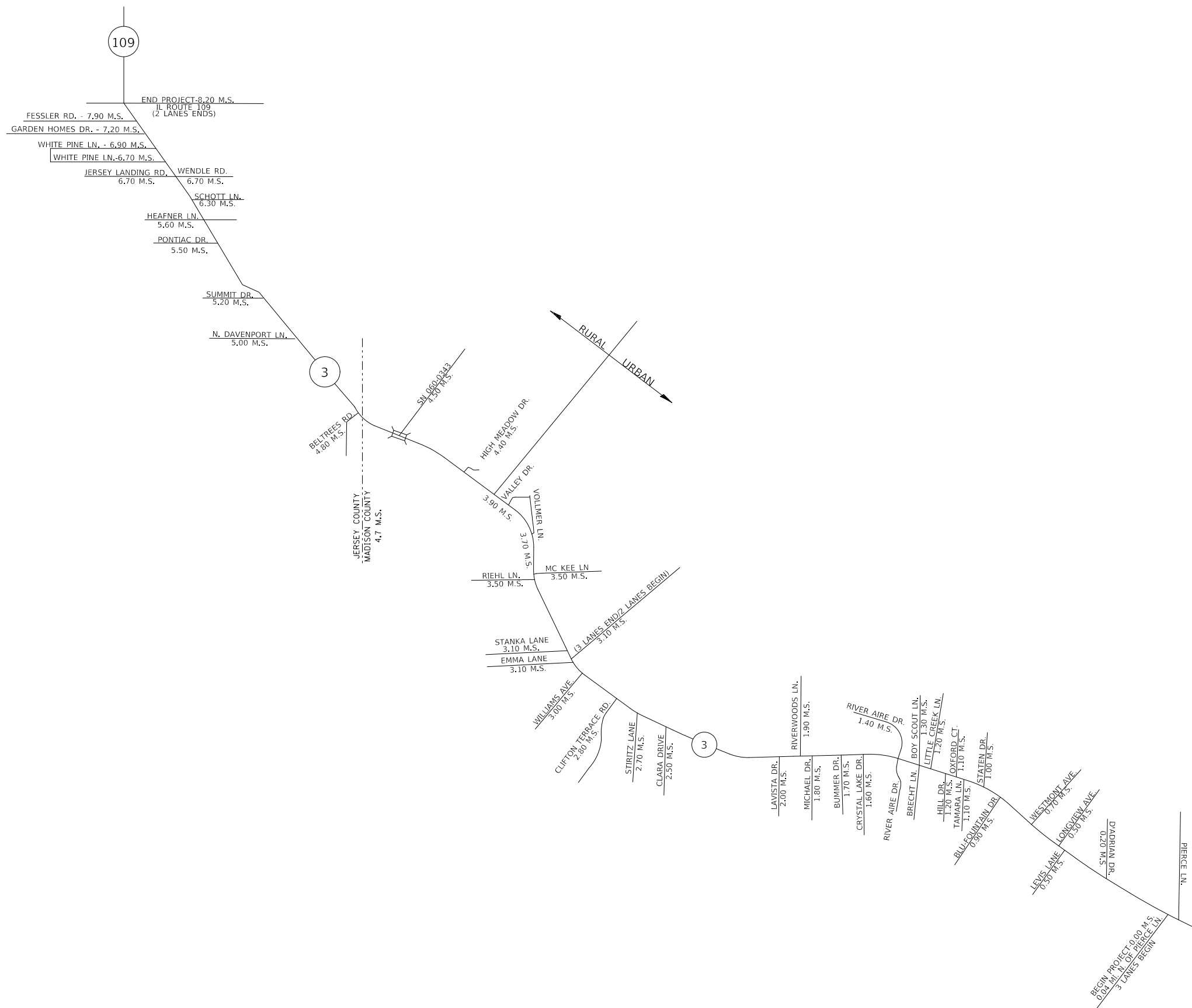
USER NAME = millerraj	DESIGNED -	REVISED -
	DRAWN -	REVISED -
PLOT SCALE = 100.2375' / in.	CHECKED -	REVISED -
PLOT DATE = 11/30/2020	DATE -	REVISED -

**STATE OF ILLINOIS
DEPARTMENT OF TRANSPORTATION**

SUMMARY OF QUANTITIES

SCALE: SHEET 1 OF 1 SHEETS STA. TO STA.

F.A.S./F.A.U.	SECTION	COUNTY	TOTAL SHEETS	SHEET NO.
*	59,60CJS-1	**	7	3
			CONTRACT NO. 76N73	
		ILLINOIS	FED. AID PROJECT	



NOT TO SCALE

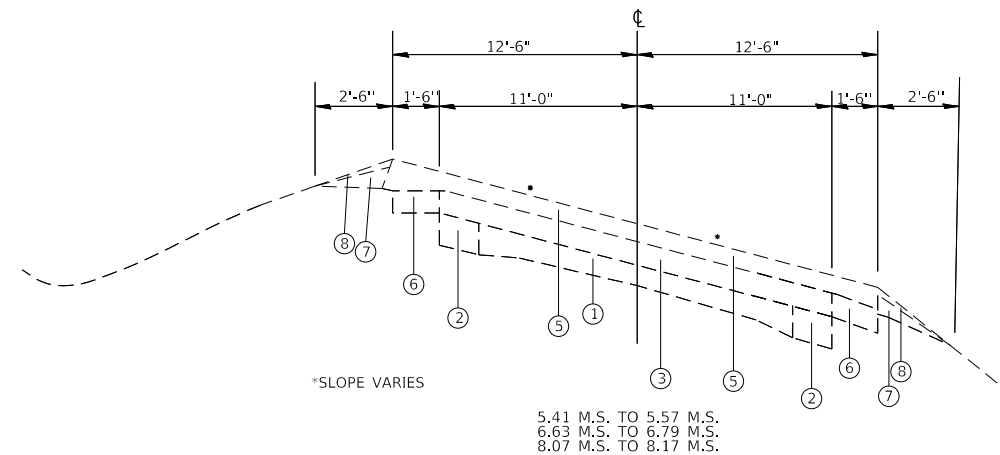
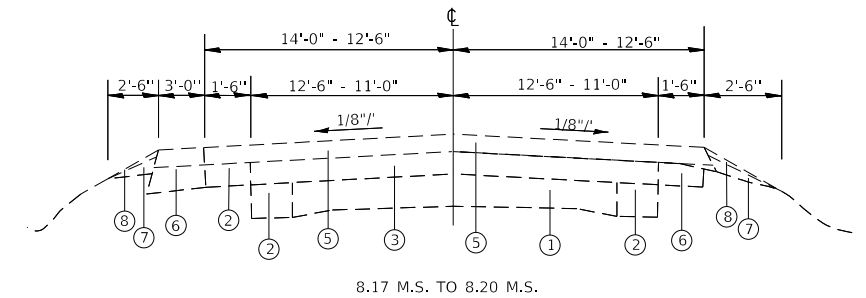
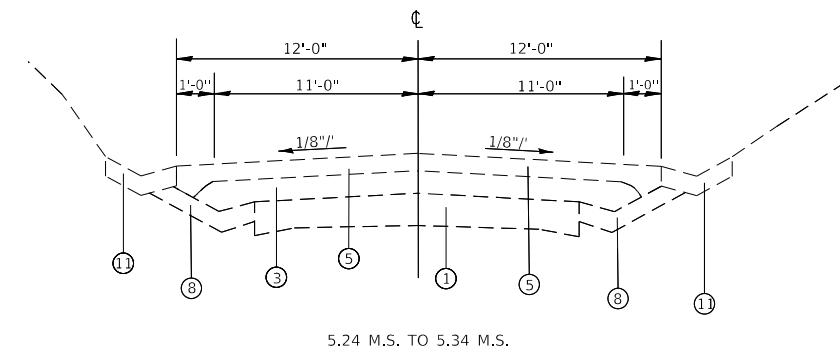
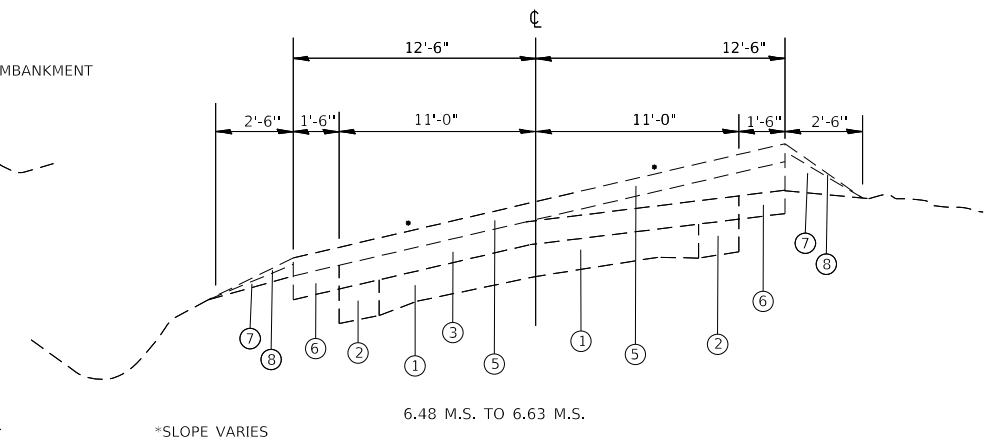
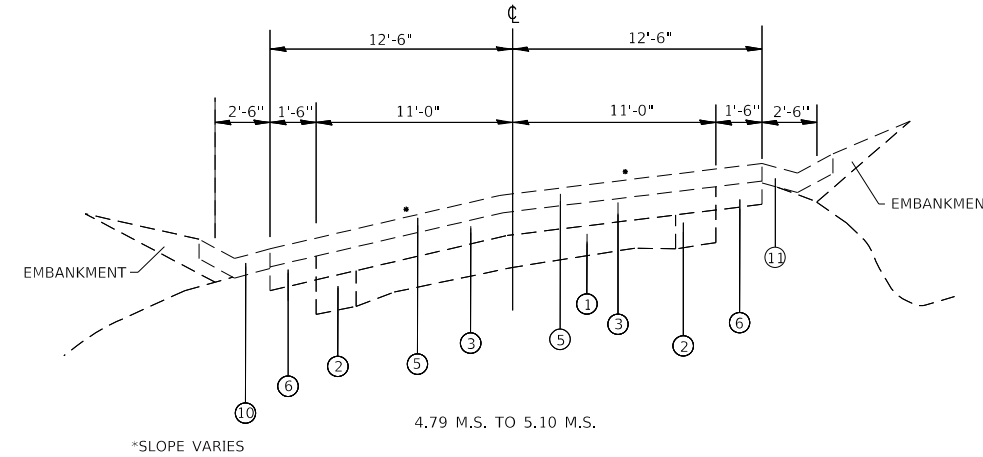
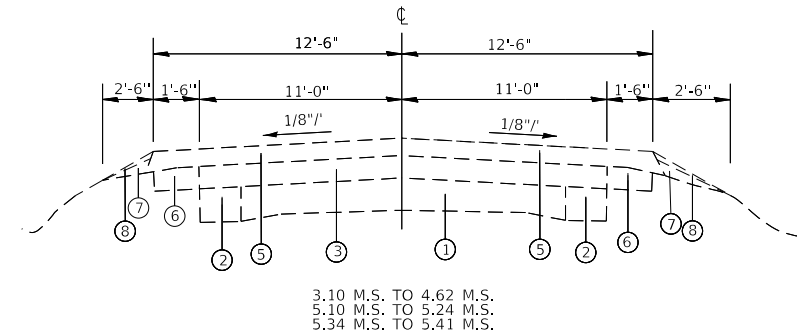
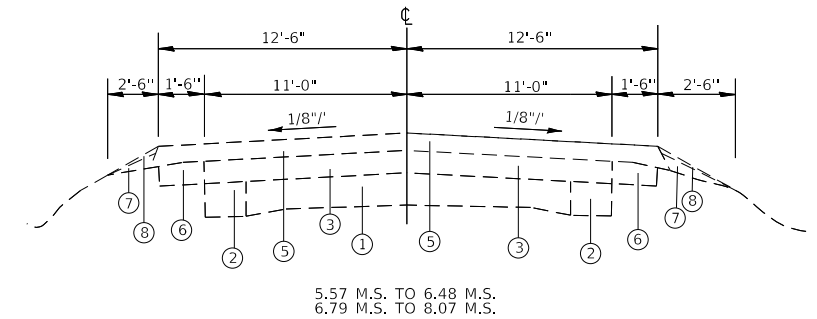
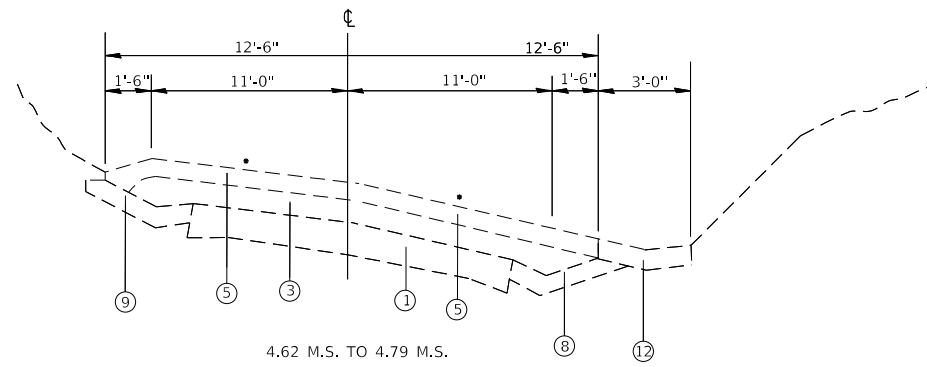
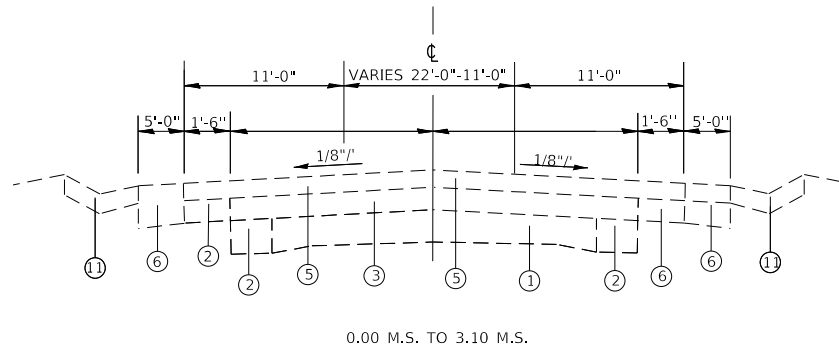
MODEL: Default
 FILE: h:\m\c\p\uplanroom.d\illinois.gov\PIUIDOT\Documents\IDOT_Offices\IDOT\c\Projects\076N73\ADDdata\CAD\pieces\076N73-shc-plan.dgn

USER NAME = millerraj	DESIGNED -	REVISED -
	DRAWN -	REVISED -
PLOT SCALE = 100.2375' / in.	CHECKED -	REVISED -
PLOT DATE = 11/30/2020	DATE -	REVISED -

**STATE OF ILLINOIS
 DEPARTMENT OF TRANSPORTATION**

LOCATION MAP
 SCALE: SHEET 1 OF 1 SHEETS STA. TO STA.

* 747/8956		** JERSEY/MADISON	
F.A.S./ F.A.U.	SECTION	COUNTY	TOTAL SHEETS
*	59.60CJS-1	**	7
		CONTRACT NO. 76N73	
		SHEET NO.	4



- LEGEND**
- ① EXIST. PCC PAVEMENT 9-6-9
 - ② EXIST. PCC WIDENING, 9"
 - ③ EXIST. HMA OVERLAY, VAR. 4 1/4" TO 5 3/4"
 - ④ (OMITTED)
 - ⑤ EXIST. HMA SURFACE COURSE, MIX D, N70, 2 1/4"
 - ⑥ EXIST. HMA SHOULDERS, 6"
 - ⑦ EXIST. AGG. SHOULDERS, TYPE B, VAR. 2 1/4" TO 0"
 - ⑧ EXIST. AGG. WEDGE SHOULDER, TYPE B, 3/4"
 - ⑨ EXIST. CONCRETE GUTTER
 - ⑩ EXIST. CONCRETE GUTTER, TYPE A
 - ⑪ EXIST. CONCRETE GUTTER, TYPE B

MODEL: Default
 FILE: Model: Pic:\pub\harron.dwg
 PROJECT: 0876N73\CADD\DATA\CAD\sheet\0876N73-shc-plan.dgn

USER NAME = millerraj	DESIGNED -	REVISED -
	DRAWN -	REVISED -
PLOT SCALE = 100.2375' / in.	CHECKED -	REVISED -
PLOT DATE = 11/30/2020	DATE -	REVISED -

**STATE OF ILLINOIS
DEPARTMENT OF TRANSPORTATION**

EXISTING TYPICAL SECTIONS

SCALE: SHEET 1 OF 1 SHEETS STA. TO STA.

* 747/8956
** JERSEY/MADISON

F.A.S./F.A.U.	SECTION	COUNTY	TOTAL SHEETS	SHEET NO.
*	59,60CJS-1	**	7	5
CONTRACT NO. 76N73				
ILLINOIS FED. AID PROJECT				

CRACK AND JOINT SEAL SCHEDULE

MILE STATION TO MILE STATION	LONGITUDINAL CRACK	TRANSVERSE CRACKS	CRACK ROUTING	CRACK FILLING
3-LANE SECTION				
0.00 - 3.10	2	20460	53196	21278
2-LANE SECTION				
3.10 - 8.17	1	22308	49078	19631
8.17 - 8.20	1	150	308	123
SUBTOTAL:			102582	41032
SUBTOTAL(20%):			20516	8206
TOTAL:			123098	49238

TRANSVERSE CRACKS WERE ESTIMATED BASED ON 100 EACH PER TOTAL LANE WIDTHS PER 1/2 MILE.

MODEL: Default
 FILE: \\nlsr1c1.pic.uplanroom.edu\illinois.gov\PIVIDOT\Documents\DOT_Offices\District 8\Projects\076N73\CADD\DATA\CAD\kreses\076N73-shc-plan.dgn

* 747/8956
 ** JERSEY/MADISON

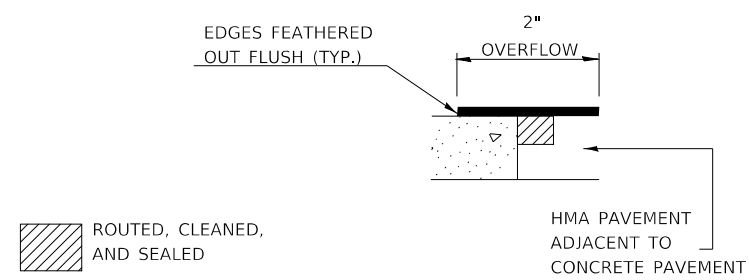
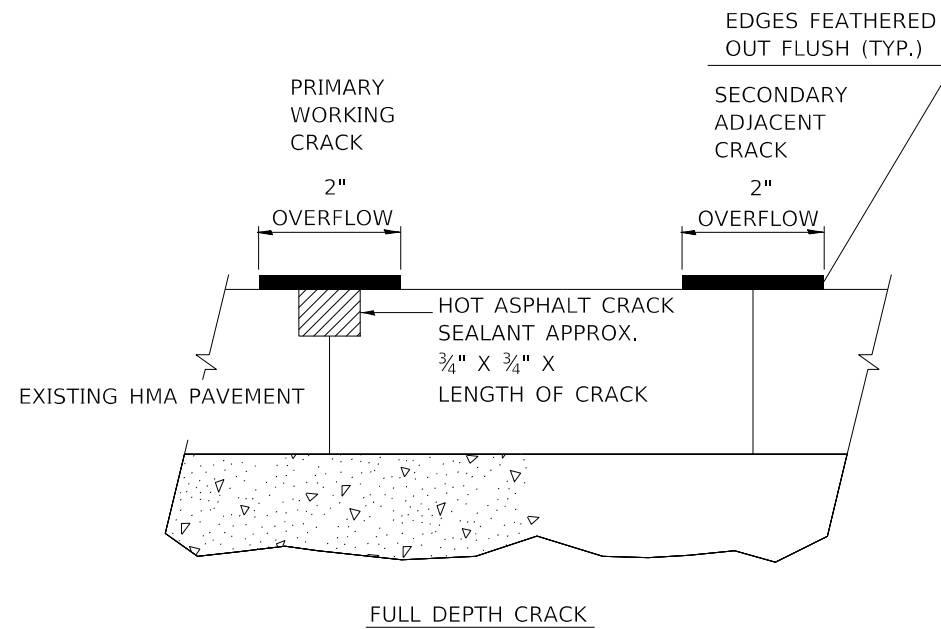
USER NAME = millerraj	DESIGNED -	REVISED -
	DRAWN -	REVISED -
PLOT SCALE = 100.2375' / in.	CHECKED -	REVISED -
PLOT DATE = 11/30/2020	DATE -	REVISED -

**STATE OF ILLINOIS
 DEPARTMENT OF TRANSPORTATION**

SCHEDULE OF QUANTITIES

SCALE: SHEET 1 OF 1 SHEETS STA. TO STA.

F.A.S./ F.A.U.	SECTION	COUNTY	TOTAL SHEETS	SHEET NO.
*	59,60CJS-1	**	7	6
CONTRACT NO. 76N73				
		ILLINOIS	FED. AID PROJECT	



CRACK & JOINT SEALING DETAILS

MODEL: Default
 FILE: \\nrcs1-pix\pub\room\dat\illinois.gov\PI\DOT\Documents\IDOT_Offices\IDOT\DOT_76N73\CADD\DATA\CAD\Projects\IDOT_76N73-shc-plan.dgn

USER NAME = millerraj	DESIGNED -	REVISED -
	DRAWN -	REVISED -
PLOT SCALE = 100.2375' / in.	CHECKED -	REVISED -
PLOT DATE = 11/30/2020	DATE -	REVISED -

**STATE OF ILLINOIS
 DEPARTMENT OF TRANSPORTATION**

CRACK AND JOINT SEALING DETAILS

SCALE: SHEET 1 OF 1 SHEETS STA. TO STA.

* 747/8956
 ** JERSEY/MADISON

F.A.S./ E.A.U.	SECTION	COUNTY	TOTAL SHEETS	SHEET NO.
*	59,60CJS-1	**	7	7
CONTRACT NO. 76N73			ILLINOIS FED. AID PROJECT	