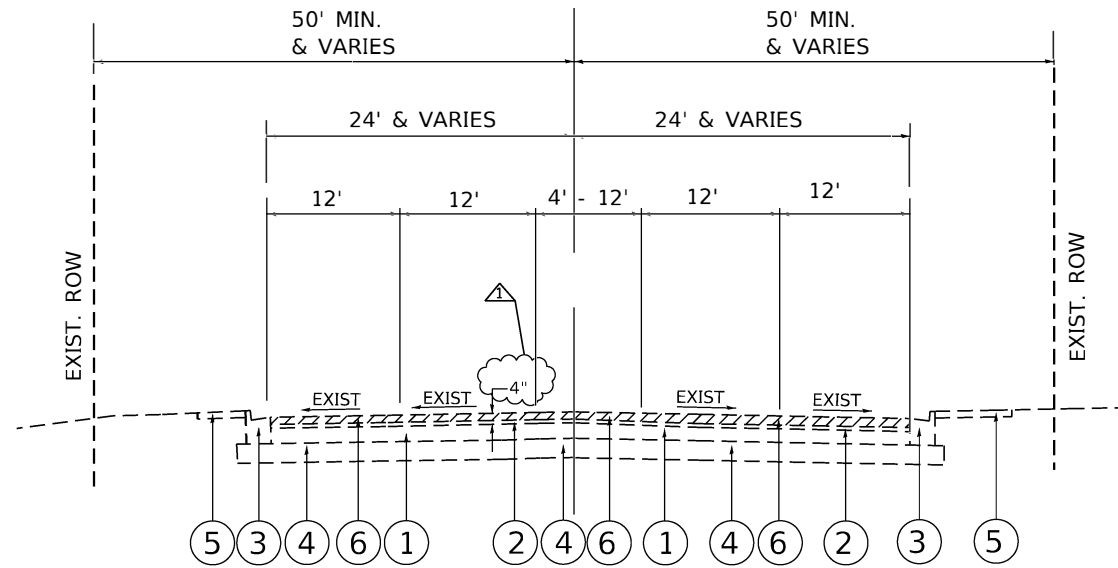


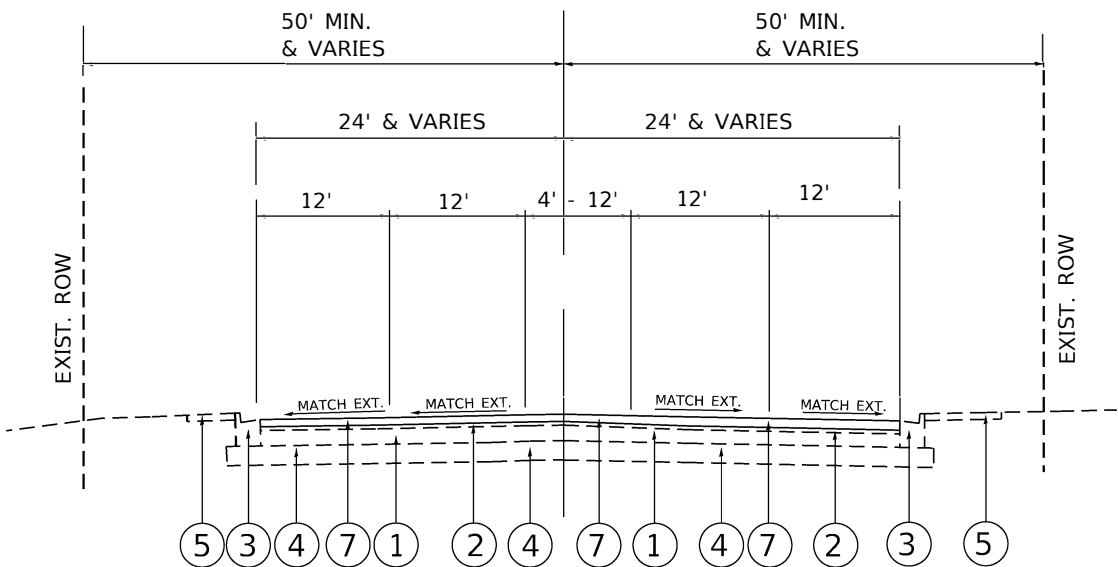
SUMMARY OF QUANTITIES			TOTAL QUANTITIES	CONSTRUCTION TYPE CODE					
CODE NO	ITEM	UNIT		URBAN	0005 OVERLAY 80% FED 20% STATE				
70300280	TEMPORARY PAVEMENT MARKING - LINE 24"	FOOT	2056	2056					
70300520	PAVEMENT MARKING TAPE, TYPE III 4"	FOOT	14259	14259					
* 78000100	THERMOPLASTIC PAVEMENT MARKING - LETTERS AND SYMBOLS	SO FT	2718	2718					
* 78000200	THERMOPLASTIC PAVEMENT MARKING - LINE 4"	FOOT	156860	156860					
* 78000400	THERMOPLASTIC PAVEMENT MARKING - LINE 6"	FOOT	10398	10398					
* 78000600	THERMOPLASTIC PAVEMENT MARKING - LINE 12"	FOOT	6319	6319					
* 78000650	THERMOPLASTIC PAVEMENT MARKING - LINE 24"	FOOT	2056	2056					
* 78100100	RAISED REFLECTIVE PAVEMENT MARKER	EACH	5101	5101					
78300200	RAISED REFLECTIVE PAVEMENT MARKER REMOVAL	EACH	4251	4251					
* 85000200	MAINTENANCE OF EXISTING TRAFFIC SIGNAL INSTALLATION	EACH	10	10					
* 88600600	DETECTOR LOOP REPLACEMENT	FOOT	9130	9130					
* 89500400	RELOCATE EXISTING PEDESTRIAN PUSH-BUTTON	EACH	40	40					

SUMMARY OF QUANTITIES			TOTAL QUANTITIES	CONSTRUCTION TYPE CODE					
CODE NO	ITEM	UNIT		URBAN	0005 OVERLAY 80% FED 20% STATE				
* 89502376	REBUILD EXISTING HANDHOLE	EACH	9	9					
K1003680	MULCH	SO YD	43	43					
X0320050	CONSTRUCTION LAYOUT (SPECIAL)	L SUM	1	1					
X0327036	BIKE PATH REMOVAL	SO YD	125	125					
X1700067	STAMPED COLORED PORTLAND CEMENT CONCRETE SIDEWALK, 5 INCH	SO FT	1422	1422					
X8140238	REBUILD EXISTING DOUBLE HANDHOLE	EACH	3	3					1
44003100	MEDIAN REMOVAL	SO FT	50	50					2
X4421825	CLASS D PATCHES, TYPE I, 9 INCH (SPECIAL)	SO YD	62	62					
X5537800	STORM SEWERS TO BE CLEANED 12"	FOOT	4320	4320					
X4421826	CLASS D PATCHES, TYPE II, 9 INCH (SPECIAL)	SO YD	158	158					
X6030310	FRAMES AND LIDS TO BE ADJUSTED (SPECIAL)	EACH	105	105					
X4421829	CLASS D PATCHES, TYPE III, 9 INCH (SPECIAL)	SO YD	175	175					
X7030005	TEMPORARY PAVEMENT MARKING REMOVAL	SO FT	68117	68117					
X4421827	CLASS D PATCHES, TYPE IV, 9 INCH (SPECIAL)	SO YD	102	102					
Z0004562	COMBINATION CONCRETE CURB AND GUTTER REMOVAL AND REPLACEMENT	FOOT	6000	6000					
Z0018500	DRAINAGE STRUCTURES TO BE CLEANED	EACH	360	360					
Z0018600	DRAINAGE STRUCTURES TO BE RECONSTRUCTED	EACH	10	10					2 REVISED SHEET 2/24/2021
Z0033700	LONGITUDINAL JOINT SEALER	FT	91380	91380					1 REVISED SHEET 2/23/2021
Z0030850	TEMPORARY INFORMATION SIGNING	SO FT	385.5	385.5					0042
Z0076600	TRAINEES	HOURS	1000	1000					NON-PART 100% STATE
Z0076604	TRAINEES - TRAINING PROGRAM GRADUATE	HOURS	1000	1000					

\* SPECIALTY ITEMS



**EXISTING TYPICAL SECTION**  
 IL RTE 137 (SHERIDAN RD.)  
 STA. 11+55 TO STA. 413+13



**PROPOSED TYPICAL SECTION**  
 IL RTE 137 (SHERIDAN RD.)  
 STA. 11+55 TO STA. 413+13

**LEGEND**

- ① EXIST. P.C.C. PAVEMENT ± 10"
- ② EXIST. HOT-MIX ASPHALT PAVEMENT AFTER MILLING ± 2 1/2"
- ③ EXIST. COMBINATION CONC. CURB AND GUTTER
- ④ EXIST. AGGREGATE SUBGRADE
- ⑤ EXIST. SIDEWALK
- ⑥ PROP. HOT-MIX ASPHALT SURFACE REMOVAL, 1 1/2"
- ⑦ PROP. HMA SURFACE COURSE, MIX "D", N70, IL-9.5, 1 1/2"

MIXTURE REQUIREMENTS		QUALITY MANAGEMENT PROGRAM (QMP)
MIXTURE USES	VOIDS @ Ndes	
<b>PAVEMENT RESURFACING</b>		
POLYMERIZED HOT-MIX ASPHALT SURFACE COURSE, MIX "E", N70 (IL 9.5 mm)	4% AT 70 GYR.	<b>PFP</b>
HOT-MIX ASPHALT SURFACE COURSE, MIX "D", N70 (IL 9.5 mm)	4% AT 70 GYR.	<b>QC/QA</b>
HOT-MIX ASPHALT SURFACE COURSE, MIX "D", N50 (IL 9.5 mm)	4% AT 50 GYR.	<b>QC/QA</b>
<b>PATCHING</b>		
CLASS D PATCHES (HMA BINDER, IL-19.0)	4% AT 70 GYR.	<b>QC/QA</b>
HOT-MIX REPLACEMENT OVER PATCHES (HMA BINDER, IL-19.0)	4% AT 70 GYR.	<b>QC/QA</b>
QMP Designation: Quality Control/Quality Assurance (QC/QA); Quality Control for Performance (QCP)		

NOTE 1: THE UNIT WEIGHT USED TO CALCULATE ALL HMA SURFACE MIXTURE QUANTITIES IS 112 LBS/SQYD/IN  
 NOTE 2: THE "AC TYPE" FOR POLYMERIZED HMA MIXES SHALL BE "SBS/SBR PG 76-22" AND FOR NON-POLYMERIZED HMA THE "AC TYPE" SHALL BE "PG 64-22" UNLESS MODIFIED BY SPECIAL PROVISIONS.  
 FOR USE OF RECYCLED MATERIALS SEE SPECIAL PROVISIONS.  
 QUALITY MANAGEMENT PROGRAM (QMP) IDENTIFIES THE PARTICULAR QUALITY CONTROL SPECIFICATION THAT APPLIES TO THE HMA MIXTURE

**NOTE A:**  
 THE LONGITUDINAL JOINT SEALANT SHALL BE PLACED OVER MILLED SURFACE

**THE CONTRACTOR SHALL PATCH FIRST THEN MILL**

REVISOR: [Symbol] REVISED SHEET 2//24/2021

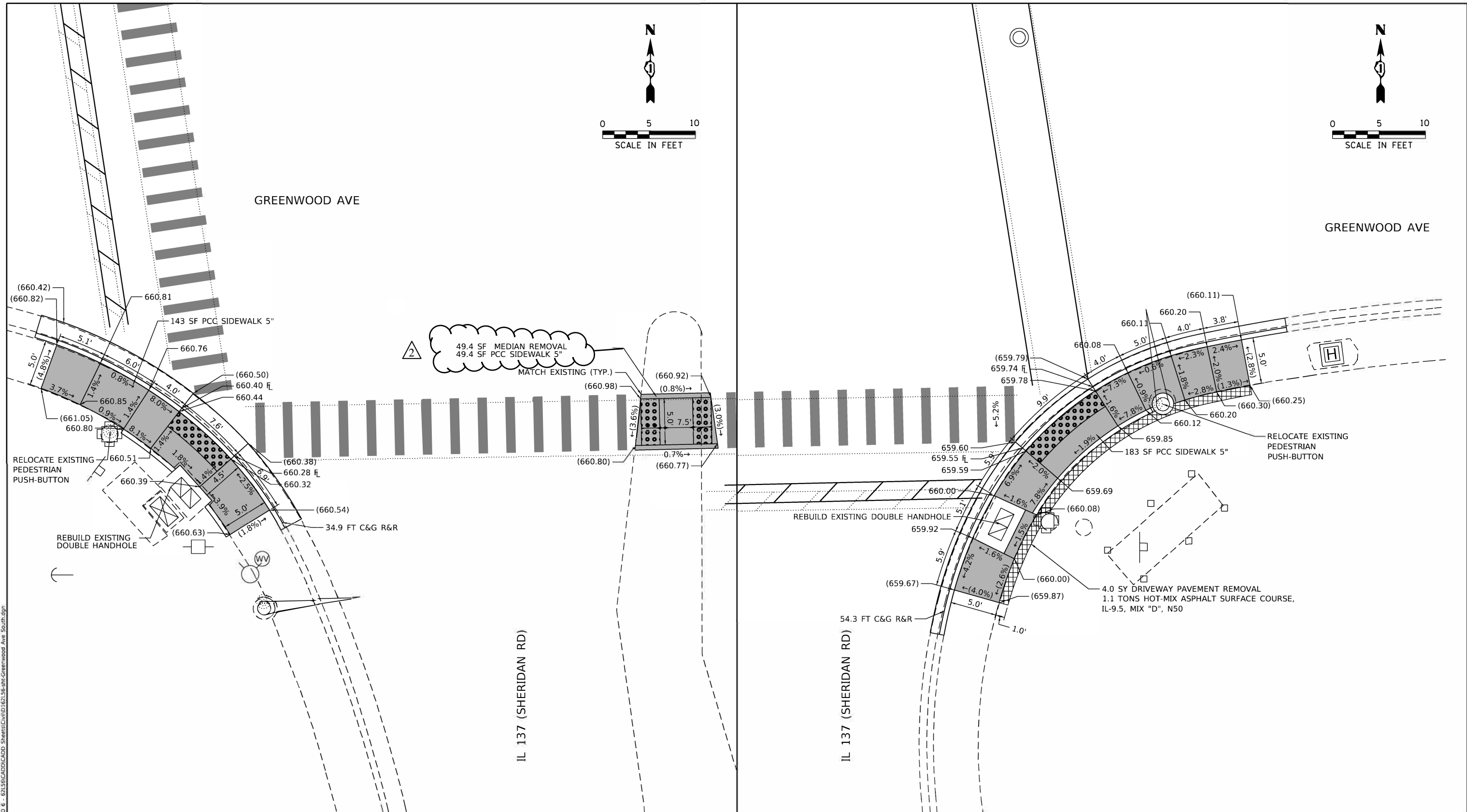
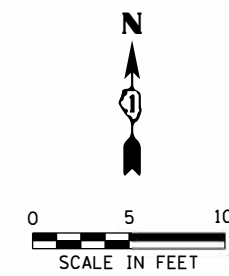
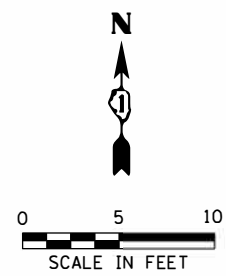
STATE OF ILLINOIS  
 DEPARTMENT OF TRANSPORTATION

EXISTING AND PROPOSED TYPICAL SECTIONS  
 IL. ROUTE 137 (SHERIDAN ROAD)- RUSSELL RD. TO GREENWOOD RD.  
 SCALE: [ ] SHEET OF [ ] SHEETS [ ] STA. TO STA. [ ]

F.A.P. RTE.	SECTION	COUNTY	TOTAL SHEETS	SHEET NO.
352	2020-078-R565W	LAKE	80	7
			CONTRACT NO. 62L56	
( ILLINOIS ) FED. AID PROJECT				

Default: p:\upbarcom.dat; illinois.gov; PWD\DOT\Documents\DOT\_Offices\District\_1\Projects\147720\CADD\Drawings\Design\147720-sh-01-bn.dgn  
 FILE NAME: p:\upbarcom.dat; illinois.gov; PWD\DOT\Documents\DOT\_Offices\District\_1\Projects\147720\CADD\Drawings\Design\147720-sh-01-bn.dgn

USER NAME = abebawa	DESIGNED -	REVISED - [Symbol] 2/16/21 A.A
	DRAWN -	REVISED -
PLOT SCALE = 100.0000' / in.	CHECKED -	REVISED -
PLOT DATE = 2/16/2021	DATE -	REVISED -



REFERENCE BENCHMARK ELEV 660.71  
 BENCHMARK : SW FLANGE BOLT OF FIRE HYDRANT AT SW CORNER  
 LOCATION : 8 FT W OF GREENWOOD AVE

REFERENCE BENCHMARK ELEV 660.71  
 BENCHMARK : SW FLANGE BOLT OF FIRE HYDRANT AT SW CORNER  
 LOCATION : 8 FT W OF GREENWOOD AVE

**LEGEND**

- XX.X' EXISTING LENGTH
- ( ) EXISTING ELEVATION/SLOPE
- PROPOSED SIDE CURB

- DETECTABLE WARNINGS
- PROPOSED SIDEWALK
- PROPOSED STAMPED COLORED SIDEWALK
- SIDEWALK REMOVAL REPLACE W/TOPSOIL & SOD
- HOT-MIX ASPHALT SURFACE COURSE IL9.5, MIX D, N-50
- EXISTING STAMPED COLORED SIDEWALK TO REMAIN
- CLASS D PATCHES, 9 INCH (SPECIAL)



USER NAME = dmortge	DESIGNED - DW	REVISED - 2/22/21 A.A
DRAWN - DW	CHECKED - DH	REVISED -
PLOT SCALE = 10.0000' / in.	DATE - 11/20/2020	REVISED -
PLOT DATE = 12/22/2020		

**STATE OF ILLINOIS  
 DEPARTMENT OF TRANSPORTATION**

**SIDEWALK RAMP DETAILS  
 IL RTE 137 AT GREENWOOD AVE - II**

SCALE: 1"=5' SHEET OF SHEETS STA. TO STA.

REVISED SHEET 2/24/2021

F.A.P. RTE.	SECTION	COUNTY	TOTAL SHEETS	SHEET NO.
0352	2020-078-R5&SW	LAKE	80	23
CONTRACT NO. 62L56				
ILLINOIS		FED. AID PROJECT		

MODEL: Default  
 FILE: M:\GIS\Engineering\Live\Projects\20005 IDOT DUBUQUE 6 - 62L56\CADD\CADD Sheets\Civil\156156-sh-Greenwood Ave South.dgn