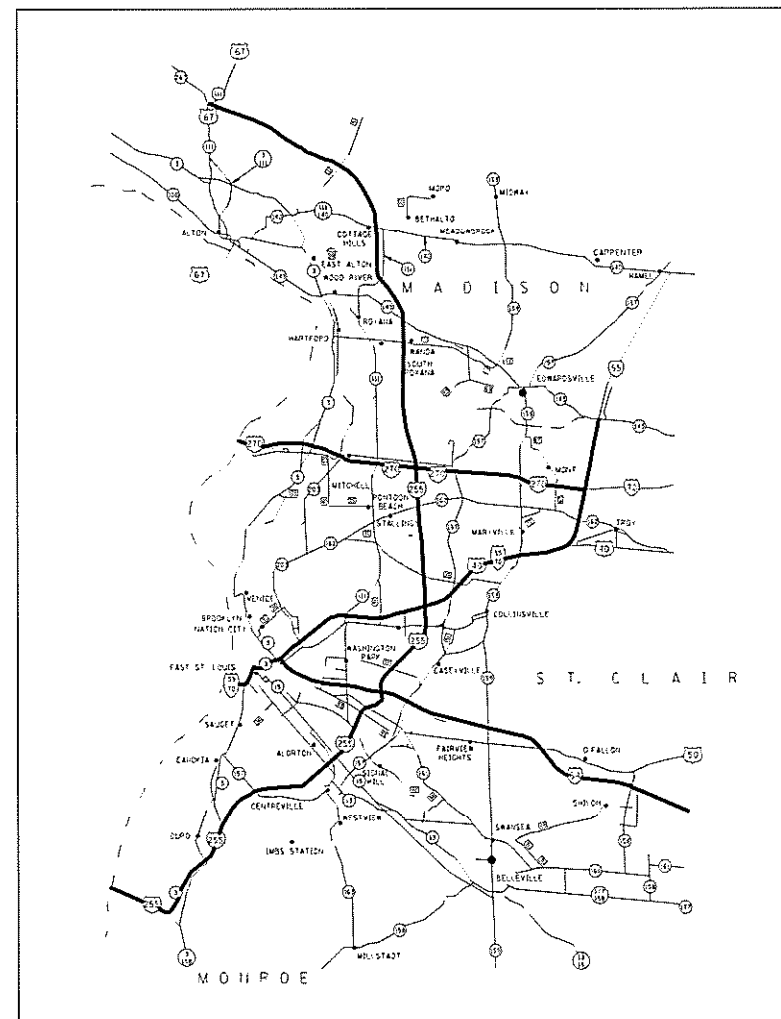


STATE OF ILLINOIS
DEPARTMENT OF TRANSPORTATION

PROPOSED
HIGHWAY PLANS

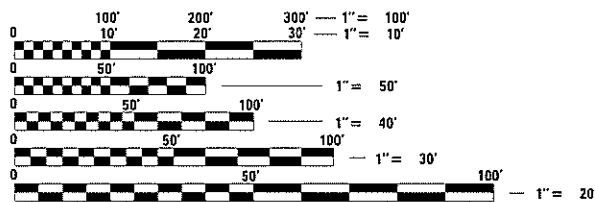
VARIOUS ROUTES
DIST 8 WEED SPRAYING 2021-4
WEED SPRAYING
VARIOUS COUNTIES

C-98-051-21



INDEX OF SHEETS

1. COVER SHEET, INDEX OF SHEETS, MAP
2. HIGHWAY STANDARDS, SPRAY SCHEDULE, AND COMMITMENTS
3. SUMMARY OF QUANTITIES
- 4-7. OMISSIONS AND SPRAY SITES



FULL SIZE PLANS HAVE BEEN PREPARED USING STANDARD ENGINEERING SCALES. REDUCED SIZED PLANS WILL NOT CONFORM TO STANDARD SCALES. IN MAKING MEASUREMENTS ON REDUCED PLANS, THE ABOVE SCALES MAY BE USED.

J.U.L.I.E.
JOINT UTILITY LOCATION INFORMATION FOR EXCAVATION
1-800-892-0123
OR 811

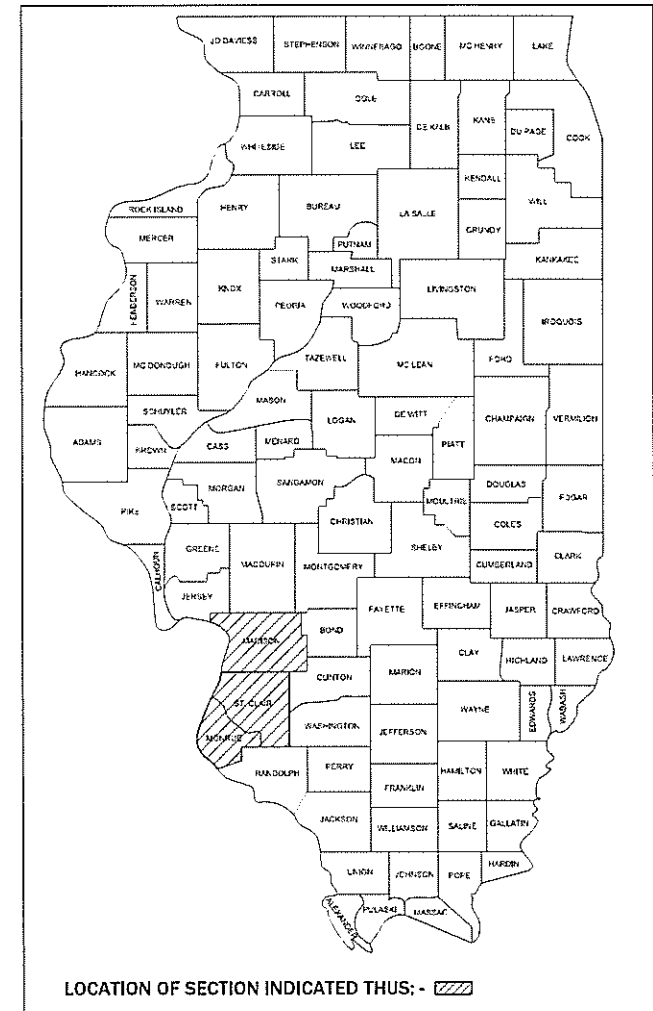
PROJECT ENGINEER: HERVE GELIN (618) 346-3179
PROJECT MANAGER: AL SCHULER (618) 349-2188

CONTRACT NO. 76P15

F.A. RTE.	SECTION	COUNTY	TOTAL SHEETS	SHEET NO.
-	**	VARIOUS	7	1
		ILLINOIS	CONTRACT NO. 76P15	

* VARIOUS
** DIST 8 WEED SPRAYING 2021-4

D-98-022-21



STATE OF ILLINOIS
DEPARTMENT OF TRANSPORTATION

SUBMITTED Dec 8 20 20
Keith Roberts
REGIONAL ENGINEER

January 29, 2021
Scott A. Clark
ENGINEER OF DESIGN AND ENVIRONMENT

January 29, 2021
James J. G...
DIRECTOR OF HIGHWAYS PROJECT IMPLEMENTATION

PRINTED BY THE AUTHORITY
OF THE STATE OF ILLINOIS

COMMITMENTS
NONE

DISTRICT 8 WEED SPRAYING 2021-4				
			2021	2022
COUNTY	ROUTE	MILES	ACRES	ACRES
MADISON	I-55/70	30	90	90
	I-55	20	60	60
	I-270	22	66	66
	I-255	21	63	63
	IL 255	52	156	156
ST. CLAIR	IL 3	20	60	60
	I-64	26	78	78
	I-255	35	105	105
MONROE	IL 3	10	30	30
	IL 15	10	30	30
	I-255	20	60	60
MISCELLANEOUS			22	22
TOTAL		276	1700	

MILEAGE AND ACREAGE SHOWN IS ESTIMATED. SPECIFIC LOCATIONS TO BE DETERMINED BY THE RESIDENT ENGINEER ONCE JOHNSON GRASS IS VISIBLE.

STANDARDS

- 701001-02
- 701006-05
- 701101-05
- 701106-02
- 701301-04
- 701426-09
- 701901-08

- VARIOUS
- DIST 8 WEED SPRAYING 2021-4

MODEL: Default
 FILE: \\nrcs-pix\uplanroom\data\illinois.gov\PWIDOT\Documents\DOT_Offices\District 8\Projects\DIST 8 WEED SPRAYING 2021-4\76P15-RT-SP-Notes.dgn

USER NAME = lewiska	DESIGNED -	REVISED -	STATE OF ILLINOIS DEPARTMENT OF TRANSPORTATION	HIGHWAY STANDARDS, SPRAY SCHEDULE, AND COMMITMENTS	F.A. RTE.	SECTION	COUNTY	TOTAL SHEETS	SHEET NO.	
	DRAWN -	REVISED -			=	**	VARIES	7	2	
PLOT SCALE = 100,0000 ' / in.	CHECKED -	REVISED -			CONTRACT NO. 76P15					
PLOT DATE = 12/1/2020	DATE -	REVISED -			SCALE:	SHEET OF SHEETS	STA. TO STA.	ILLINOIS FED. AID PROJECT		

MODEL: Default
 FILE: \\nrcs-pic\planningroom\data\illinois.gov\PWIDOT\Documents\DOT_Offices\District 8\Projects\076P15\CADD\data\CAD\pieces\076P15-ph-500.dgn

CODE NO.	ITEM	UNIT	TOTAL QUANTITY	CONSTR. CODE
				URBAN 100% STATE 0031
67100100	MOBILIZATION	L SUM	1	1
K0012950	HERBICIDE SPRAYING	ACRE	1700	1700

- VARIOUS
- DIST 8 WEED SPRAYING 2021-4

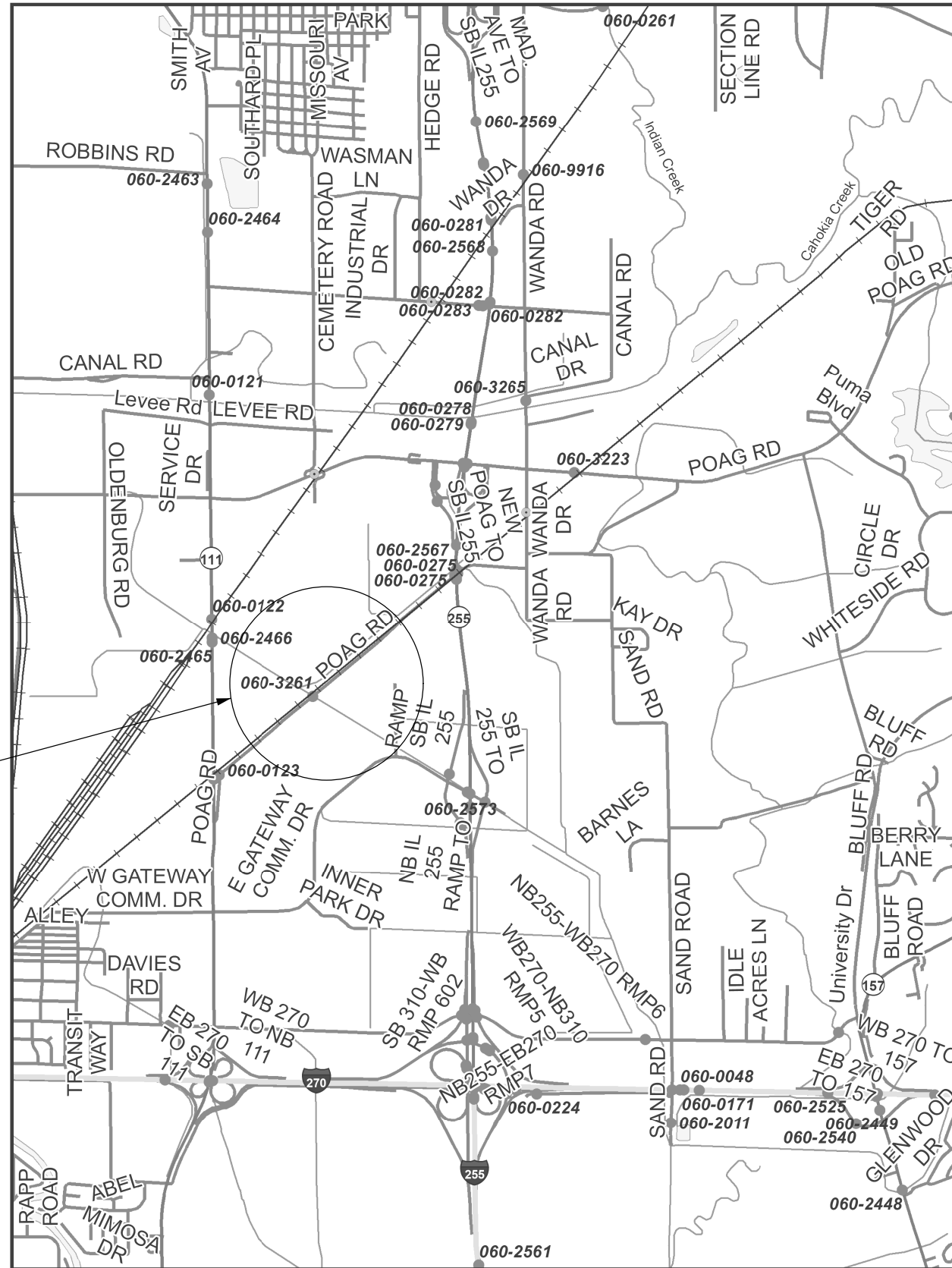
USER NAME = lewiska	DESIGNED -	REVISED -
	DRAWN -	REVISED -
PLOT SCALE = 100.0000 ' / in.	CHECKED -	REVISED -
PLOT DATE = 12/1/2020	DATE -	REVISED -

**STATE OF ILLINOIS
 DEPARTMENT OF TRANSPORTATION**

SUMMARY OF QUANTITIES

SCALE: SHEET OF SHEETS STA. TO STA.

F.A. RTE.	SECTION	COUNTY	TOTAL SHEETS	SHEET NO.
-	**	VARIES	7	3
				CONTRACT NO. 76P15
		ILLINOIS	FED. AID PROJECT	



DO NOT SPRAY

MADISON COUNTY
POAG R.R. PRAIRIE
SECTION 24, T4N-R9W

- VARIOUS
- DIST 8 WEED SPRAYING 2021-4

MODEL: Default
 FILE: \\nrcs\p\planningroom\data\illinois.gov\PWIDOT\Documents\DOT_Offices\District_8\Projects\0876P15\CADD\data\CAD\pieces\0876P15-RT-PLAN.dgn

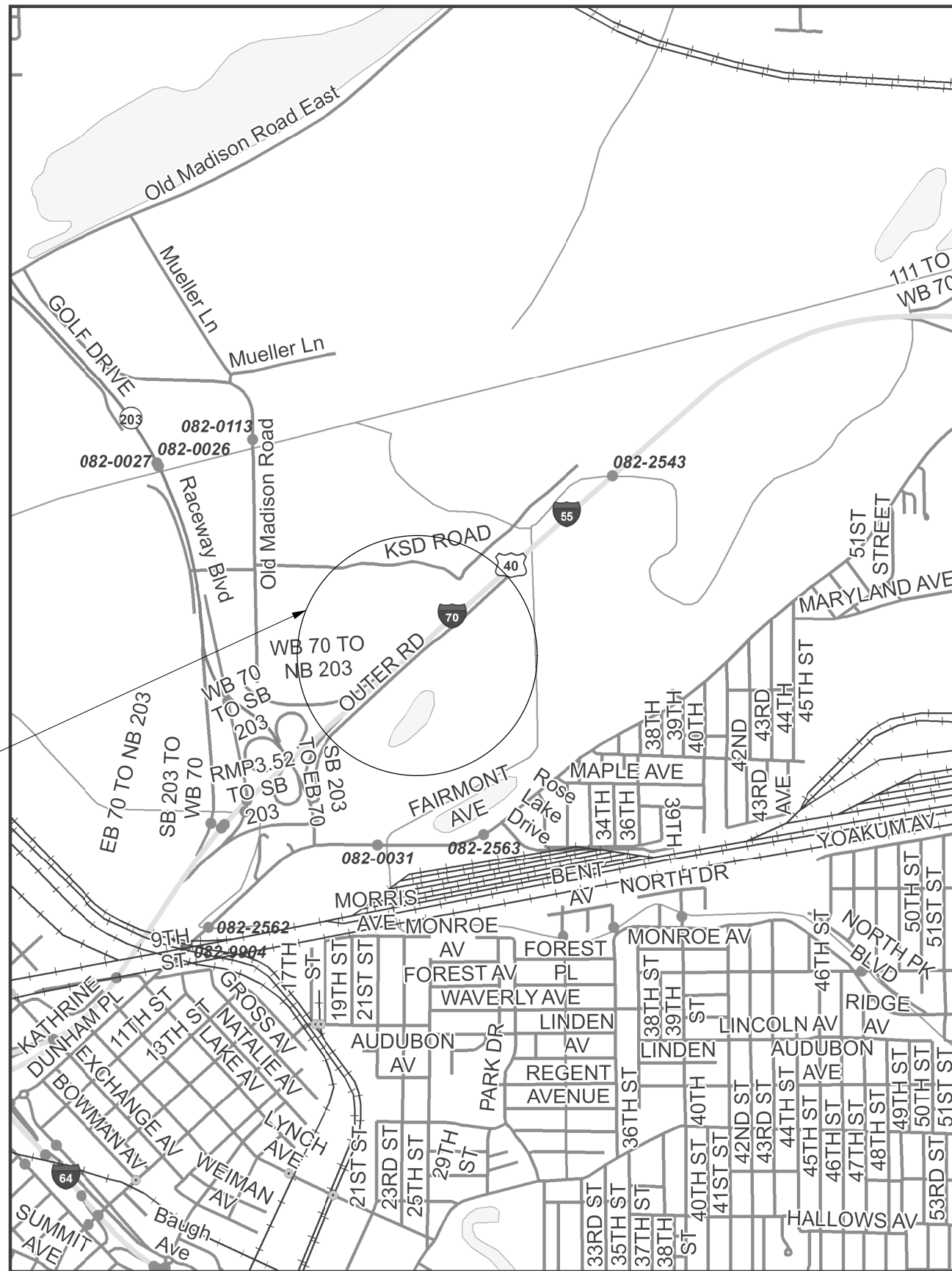
USER NAME = lewiska	DESIGNED -	REVISED -
	DRAWN -	REVISED -
PLOT SCALE = 100,0000' / in.	CHECKED -	REVISED -
PLOT DATE = 12/1/2020	DATE -	REVISED -

**STATE OF ILLINOIS
DEPARTMENT OF TRANSPORTATION**

**OMISSONS CHOUTEAU &
GRANITE CITY TOWNSHIP**

SCALE: SHEET OF SHEETS STA. TO STA.

F.A. RTE.	SECTION	COUNTY	TOTAL SHEETS	SHEET NO.
-	**	VARIES	7	5
CONTRACT NO. 76P15				
ILLINOIS FED. AID PROJECT				



DO NOT SPRAY

ST. CLAIR COUNTY
FAIRMONT CITY SITE
T1N-R9W

- VARIOUS
- DIST 8 WEED SPRAYING 2021-4

MODEL: Default
 FILE: N:\GIS_PlanRoom\GIS\Projects\DOT\Office\Distct_8\Projects\DOT\CADD\data\CAD\Access\08276P15-ht-01a.dgn

USER NAME = lewiska	DESIGNED -	REVISED -
	DRAWN -	REVISED -
PLOT SCALE = 100,0000' / in.	CHECKED -	REVISED -
PLOT DATE = 12/1/2020	DATE -	REVISED -

**STATE OF ILLINOIS
DEPARTMENT OF TRANSPORTATION**

**OMISSIONS
FAIRMONT CITY SITE**

SCALE: SHEET OF SHEETS STA. TO STA.

F.A. RTE.	SECTION	COUNTY	TOTAL SHEETS	SHEET NO.
-	**	VARIES	7	7
CONTRACT NO. 76P15				
ILLINOIS FED. AID PROJECT				