

STATE OF ILLINOIS
DEPARTMENT OF TRANSPORTATION

F.A.P. RATE	SECTION	COUNTY	TOTAL SHEETS	SHEET NO.
866	2020-197-DM	LAKE	13	1
		ILLINOIS	CONTRACT NO. 62M70	

FOR INDEX OF SHEETS, SEE SHEET NO. 2

DESIGN DESIGNATION

IL ROUTE 83: 14900 (2019) URBAN ARTERIAL
IVANHOE ROAD: 2750 (2019) MAJOR COLLECTOR

IL ROUTE 83

DESIGN SPEED = 45 MPH
POSTED SPEED = 40 MPH

IVANHOE ROAD

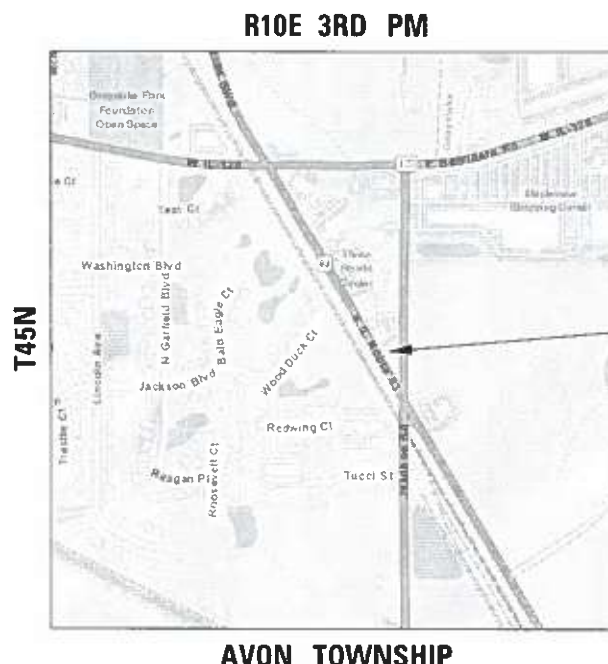
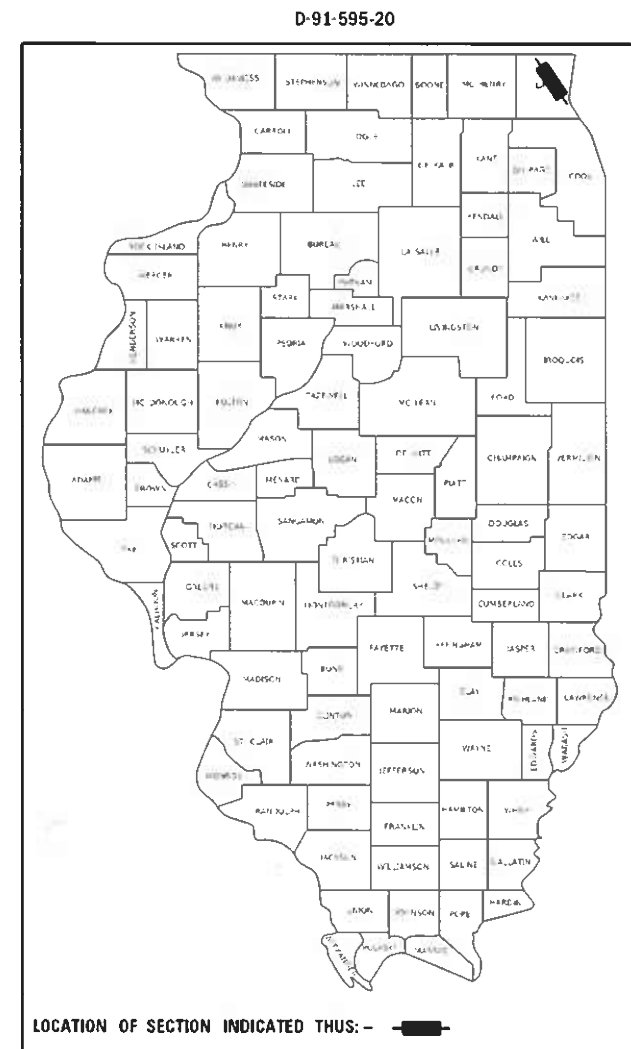
DESIGN SPEED = 40 MPH
POSTED SPEED = 40 MPH

THE IMPROVEMENT IS LOCATED
IN THE VILLAGE OF GRAYSLAKE

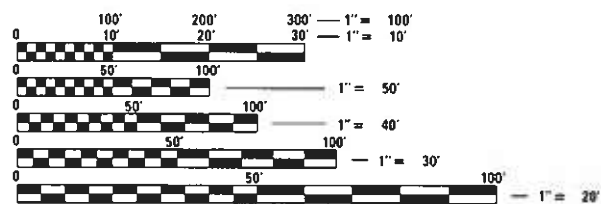
**PROPOSED
HIGHWAY PLANS**

FAP 866: IL ROUTE 83 / BARRON BLVD
AT 491 S IL ROUTE 83, GRAYSLAKE
SECTION 2020-197-DM
BUILDING DEMOLITION
LAKE COUNTY

C-91-397-20



IMPROVEMENT LOCATION
491 S IL ROUTE 83
GRAYSLAKE IL 60030



FULL SIZE PLANS HAVE BEEN PREPARED USING STANDARD ENGINEERING SCALES. REDUCED SIZED PLANS WILL NOT CONFORM TO STANDARD SCALES. IN MAKING MEASUREMENTS ON REDUCED PLANS, THE ABOVE SCALES MAY BE USED.

J.U.L.I.E.
JOINT UTILITY LOCATION INFORMATION FOR EXCAVATORS
1-800-892-0123
OR 811

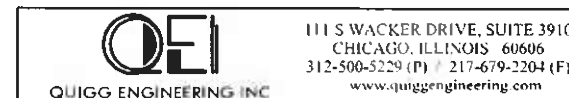
PROJECT ENGINEER: VESELIN VELICHKOV (847) 705-4432
PROJECT MANAGER: FAWAD AQUEEL (847) 705-4247

CONTRACT NO. 62M70

GROSS LENGTH = NA
NET LENGTH = NA



Jameel Ahmed 12/3/2020
Jameel Ahmed, Illinois P.E. 062-061172 Date
Expires 11/30/2021



STATE OF ILLINOIS
DEPARTMENT OF TRANSPORTATION

SUBMITTED December 9, 2020
Amulya J. Prangley 1/29/21 REGIONAL ENGINEER
January 29, 2021
Scott A. Elk
ENGINEER OF DESIGN AND ENVIRONMENT
January 29, 2021
Jamal Jan
DIRECTOR OF HIGHWAYS PROJECT IMPLEMENTATION 13

PRINTED BY THE AUTHORITY
OF THE STATE OF ILLINOIS

INDEX OF SHEETS

SHEET NO.	DESCRIPTION	STANDARD NO.
1	TITLE SHEET	000001-08
2	INDEX OF SHEETS, HIGHWAY STANDARDS & GENERAL NOTES	280001-07
3 - 6	SUMMARY OF QUANTITIES	606001-07
7	BUILDING DEMOLITION PLAN	701001-02
8	BUILDING DEMOLITION DETAILS	701006-05
9	UTILITY REMOVAL PLAN	701101-05
10	LANDSCAPING AND EROSION CONTROL PLAN	701106-02
11	PLAT OF HIGHWAYS (FOR INFORMATION ONLY)	701301-04
12	TRAFFIC CONTROL AND PROTECTION FOR SIDE ROADS, INTERSECTIONS, AND DRIVEWAYS (TC-10)	701501-06
13	ARTERIAL ROAD INFORMATION SIGN (TC-22)	701606-10
		701901-08

HIGHWAY STANDARDS

STANDARD NO.	DESCRIPTION
000001-08	STANDARD SYMBOLS, ABBREVIATIONS AND PATTERNS
280001-07	TEMPORARY EROSION CONTROL SYSTEMS
606001-07	CONCRETE CURB TYPE B AND COMBINATION CONCRETE CURB AND GUTTER
701001-02	OFF-RD OPERATIONS, 2L, 2W, MORE THAN 15' (4.5m) AWAY
701006-05	OFF-RD OPERATIONS, 2L, 2W, 15' (4.5m) TO 24" (600mm) FROM PAVEMENT EDGE
701101-05	OFF-RD OPERATIONS, MULTILANE, 15' (4.5m) TO 24" (600mm) FROM PAVEMENT EDGE
701106-02	OFF-RD OPERATIONS, MULTILANE, MORE THAN 15' (4.5m) AWAY
701301-04	LANE CLOSURE, 2L, 2W, SHORT TIME OPERATIONS
701501-06	URBAN LANE CLOSURE, 2L, 2W, UNDIVIDED
701606-10	URBAN SINGLE LANE CLOSURE, MULTILANE, 2W WITH MOUNTABLE MEDIAN
701901-08	TRAFFIC CONTROL DEVICES

GENERAL NOTES

- THESE PLANS HAVE BEEN PREPARED FROM INFORMATION ACQUIRED FROM FIELD MEASUREMENTS AND ON-SITE VISUAL OBSERVATIONS.
- BEFORE STARTING ANY EXCAVATION, THE CONTRACTOR SHALL CALL "J.U.L.I.E." AT (800) 892-0123 OR 811 FOR FIELD LOCATIONS OF BURIED ELECTRIC, TELEPHONE AND GAS UTILITIES. 48 HOUR NOTIFICATION IS REQUIRED.
- THE CONTRACTOR AND THE RESIDENT ENGINEER SHALL CONTACT MIKE CULLIAN AT 847-705-4271 FROM THE BUREAU OF LAND ACQUISITION, AND THE VILLAGE OF GRAYSLAKE AT LEAST 48 HOURS PRIOR TO CONSTRUCTION ACTIVITIES.
- THE CONTRACTOR SHALL CONTACT THE IDOT DISTRICT 1 TRAFFIC CONTROL SUPERVISOR FOR ARTERIALS AT KALPANA.KANNAN-HOSADURGA@ILLINOIS.GOV AT LEAST 72 HOURS IN ADVANCE OF BEGINNING WORK.
- THE CONTRACTOR SHALL COORDINATE CONSTRUCTION ACTIVITIES WITH UTILITY COMPANIES, AND THE VILLAGE OF GRAYSLAKE.
- THE CONTRACTOR WILL NOT BE ALLOWED TO SET UP A YARD OR FIELD OFFICE ON STATE PROPERTY WITHOUT WRITTEN PERMISSION FROM THE DEPARTMENT.
- IT SHALL BE THE CONTRACTOR'S RESPONSIBILITY TO VERIFY ALL DIMENSIONS AND CONDITIONS EXISTING IN THE FIELD PRIOR TO CONSTRUCTION AND ORDERING OF MATERIALS.
- THE CONTRACTOR IS RESPONSIBLE FOR OBTAINING A DEMOLITION PERMIT FROM THE VILLAGE OF GRAYSLAKE.
- THE CONTRACTOR MUST CONTACT THE VILLAGE OF GRAYSLAKE FOR CORRESPONDING UTILITY DISCONNECTION REQUIREMENTS.
- ALL APPLICABLE PERMIT FEES FOR THE DEMOLITION AND DISCONNECTION OF UTILITIES SHALL BE INCLUDED IN THE UNIT PRICE FOR BUILDING REMOVAL.
- BACKFILL USED FOR ANY HOLES, SUCH AS BASEMENTS, SHALL BE WITH POROUS GRANULAR EMBANKMENT AND SHALL BE INCLUDED IN THE UNIT PRICE OF THE RESPECTIVE PAY ITEMS.
- CONTRACTOR SHALL INSTALL "TRUCKS ENTERING AND LEAVING HIGHWAY" W21-I104(o)-48 (MODIFIED) IN EACH DIRECTION ON IVANHOE ROAD APPROACHING BUILDING DEMOLITION SITE. THESE SIGNS SHALL BE PAID FOR AS TEMPORARY INFORMATION SIGNING.
- DUST CONTROL FOR EACH SITE SHALL BE IN ACCORDANCE TO ARTICLE 107.36 OF THE STANDARD SPECIFICATIONS FOR ROAD AND BRIDGE CONSTRUCTION, AND SHALL BE INCLUDED IN THE UNIT PRICE FOR BUILDING REMOVAL.
- DO NOT SCALE PLANS FOR CONSTRUCTION DIMENSIONS.
- THE CONTRACTOR SHALL USE CARE IN GRADING OR EXCAVATING NEAR ANY AND ALL EXISTING ITEMS THAT WILL NOT BE REMOVED INCLUDING PREVIOUSLY SEEDED AREAS, ANY DAMAGE DONE TO EXISTING ITEMS BY THE CONTRACTOR SHALL BE REPAIRED AT THE CONTRACTOR'S OWN EXPENSE TO THE SATISFACTION OF THE ENGINEER.
- ANY LOOSE MATERIAL DEPOSITED IN THE FLOW LINE OF CURB OR DRAINAGE STRUCTURES, WHICH OBSTRUCTS THE NATURAL FLOW OF WATER, SHALL BE REMOVED AT THE CLOSE OF EACH WORKING DAY. PRIOR TO ACCEPTANCE OF THE IMPROVEMENT, ALL DRAINAGE STRUCTURES SHALL BE FREE OF DIRT AND DEBRIS. THIS WORK WILL NOT BE PAID FOR SEPARATELY BUT SHALL BE CONSIDERED AS INCIDENTAL.
- THE CONTRACTOR SHALL SECURE ALL PERMITS SUCH AS DEMOLITION PERMITS AND PERMITS FOR DISCONNECTION OF UTILITIES PER ARTICLE 107.04 OF THE STANDARD SPECIFICATIONS FOR ROAD AND BRIDGE CONSTRUCTION. NO ADDITIONAL COMPENSATION SHALL BE PROVIDED FOR PROCUREMENT OF PERMITS.
- LOCATION REQUIRES COMPLETE REMOVAL OF ALL UNDERGROUND UTILITIES (WATERMAIN, SANITARY, STORM SEWER, ELECTRIC, GAS, FUEL LINES, ETC.) INCLUDING PIPES, DRAINAGE, AND UTILITY STRUCTURES BETWEEN BUILDING AND THE MAINLINES.
- THE RESIDENT ENGINEER SHALL COORDINATE WITH IDOT MAINTENANCE YARD THE REMOVAL OF THE STATE PROPERTY SIGNS AND THE EXISTING TEMPORARY BARRIER WALLS.

MODEL: D:\64bit...
 FILE NAME: S:\2019\191108\028_PTB\191_003\WO_07_Building_Demolition_Contract\CADD\CADD_S\specs\62M70-01-02-02-gen_notes.dgn



USER NAME = wnohammed	DESIGNED - AWM	REVISED -
	DRAWN - AWM	REVISED -
PLOT SCALE = 60.0000 ' / in.	CHECKED - JA	REVISED -
PLOT DATE = 12/17/2020	DATE - 09/25/2020	REVISED -

**STATE OF ILLINOIS
 DEPARTMENT OF TRANSPORTATION**

INDEX OF SHEETS, HIGHWAY STANDARDS, AND GENERAL NOTES
491 S. IL ROUTE 83, GRAYSLAKE, IL 60030

F.A.P. RTE.	SECTION	COUNTY	TOTAL SHEETS	SHEET NO.
866	2020-197-DM	LAKE	13	2
CONTRACT NO. 62M70				
ILLINOIS FED. AID PROJECT				

SCALE: SHEET OF SHEETS STA. TO STA.

CODE NO.	ITEM	UNIT	TOTAL QUANTITY	CONSTR. CODE
				100% STATE
				0044 URBAN
20100110	TREE REMOVAL (6 TO 15 UNITS DIAMETER)	UNIT	8	8
20101400	NITROGEN FERTILIZER NUTRIENT	POUND	61	61
20101600	POTASSIUM FERTILIZER NUTRIENT	POUND	61	61
20101700	SUPPLEMENTAL WATERING	UNIT	7	7
20800150	TRENCH BACKFILL	CU YD	28	28
21101625	TOPSOIL FURNISH AND PLACE, 6"	SQ YD	3,261	3,261
25000210	SEEDING, CLASS 2A	ACRE	0.75	0.75
25100115	MULCH, METHOD 2	ACRE	0.75	0.75
28000400	PERIMETER EROSION BARRIER	FOOT	701	701
28000510	INLET FILTERS	EACH	1	1
30300001	AGGREGATE SUBGRADE IMPROVEMENT	CU YD	1,620	1,620
44000100	PAVEMENT REMOVAL	SQ YD	2,071	2,071
44000300	CURB REMOVAL	FOOT	180	180
44000500	COMBINATION CURB AND GUTTER REMOVAL	FOOT	134	134

* SPECIALITY ITEM

MODEL: D:\p4\h... FILE NAME: S:\2019\1911028_PTB1\01_003\1\00_07_Building_Demo\liba_Contract\CADD_S\res\62M70-ht-003-500 - 1 of 4.dgn



USER NAME = wmoahammed	DESIGNED - AWM	REVISED -
	DRAWN - AWM	REVISED -
PLOT SCALE = 60.0000 ' / in.	CHECKED - JA	REVISED -
PLOT DATE = 12/17/2020	DATE - 09/25/2020	REVISED -

**STATE OF ILLINOIS
DEPARTMENT OF TRANSPORTATION**

**SUMMARY OF QUANTITIES - 1 OF 4
491 S. IL ROUTE 83, GRAYSLAKE, IL 60030**

SCALE: SHEET OF SHEETS STA. TO STA.

F.A.P. RTE.	SECTION	COUNTY	TOTAL SHEETS	SHEET NO.
866	2020-197-DM	LAKE	13	3
CONTRACT NO. 62M70			ILLINOIS FED. AID PROJECT	

CODE NO.	ITEM	UNIT	TOTAL QUANTITY	CONSTR. CODE
				100% STATE
				0044 URBAN
44000600	SIDEWALK REMOVAL	SQ FT	503	503
60500040	REMOVING MANHOLES	EACH	1	1
60500050	REMOVING CATCH BASINS	EACH	2	2
60603800	COMBINATION CONCRETE CURB AND GUTTER, TYPE B-6.12	FOOT	102	102
* 66900105	UNDERGROUND STORAGE TANK REMOVAL	EACH	6	6
* 66900200	NON-SPECIAL WASTE DISPOSAL	CU YD	1,610	1,610
* 66900530	SOIL DISPOSAL ANALYSIS	EACH	4	4
* 66901001	REGULATED SUBSTANCES PRE-CONSTRUCTION PLAN	LSUM	1	1
* 66901003	REGULATED SUBSTANCES FINAL CONSTRUCTION REPORT	LSUM	1	1
* 66901006	REGULATED SUBSTANCES MONITORING	CAL DA	7	7
67000400	ENGINEER'S FIELD OFFICE, TYPE A	CAL MO	6	6
67100100	MOBILIZATION	L SUM	1	1
67201100	SEALING ABANDONED MONITORING WELLS	EACH	4	4
70102620	TRAFFIC CONTROL AND PROTECTION, STANDARD 701501	L SUM	1	1

* SPECIALITY ITEM

MODEL: D:\p\h\... FILE NAME: S:\2019\19110228_PTB191_003\W0 07_Building Demolition_Contract\CADD\CADD Sheets\62M70-CH-004-500 - 2 of 4.dgn



USER NAME = jahmed	DESIGNED - AWM	REVISED -
	DRAWN - AWM	REVISED -
PLOT SCALE = 60.0000 ' / in.	CHECKED - JA	REVISED -
PLOT DATE = 12/18/2020	DATE - 09/25/2020	REVISED -

**STATE OF ILLINOIS
DEPARTMENT OF TRANSPORTATION**

**SUMMARY OF QUANTITIES - 2 OF 4
491 S. IL ROUTE 83, GRAYSLAKE, IL 60030**

SCALE: SHEET OF SHEETS STA. TO STA.

F.A.P. RTE.	SECTION	COUNTY	TOTAL SHEETS	SHEET NO.
866	2020-197-DM	LAKE	13	4
ILLINOIS FED. AID PROJECT			CONTRACT NO. 62M70	

CODE NO.	ITEM	UNIT	TOTAL QUANTITY	CONSTR. CODE
				100% STATE
				0044 URBAN
* 70102625	TRAFFIC CONTROL AND PROTECTION, STANDARD 701606	L SUM	1	1
* 84200600	REMOVAL OF LIGHTING UNIT, NO SALVAGE	EACH	5	5
84200804	REMOVAL OF POLE FOUNDATION	EACH	5	5
X0300249	REMOVE EXISTING GATE	EACH	1	1
X0321690	BRICK WALL REMOVAL	FOOT	36	36
X0322791	FILL EXISTING SANITARY SEWERS	CU YD	2	2
X0325815	REMOVE EXISTING CABLE	FOOT	561	561
X0327009	REMOVE SIGN (SPECIAL)	EACH	2	2
X0350810	BOLLARD REMOVAL	EACH	18	18
X0840000	SANITARY SEWER REMOVAL 8"	FOOT	92	92
X5510100	STORM SEWER REMOVAL	FOOT	579	579
X5620124	WATER SERVICE LINE REMOVAL	FOOT	40	40
Z0007601	BUILDING REMOVAL NO. 1	L SUM	1	1
Z0007602	BUILDING REMOVAL NO. 2	L SUM	1	1

* SPECIALITY ITEM

MODEL: D:\p4\h... FILE NAME: S:\2019\191101028_PTB101_003\1\00\07_Building_Demolition_Contract\CADD_S\Spec\62M70-ht-005-S00 - 3 of 4.dgn



USER NAME = wmoahammed	DESIGNED - AWM	REVISED -
	DRAWN - AWM	REVISED -
PLOT SCALE = 60.0000 ' / in.	CHECKED - JA	REVISED -
PLOT DATE = 12/17/2020	DATE - 09/25/2020	REVISED -

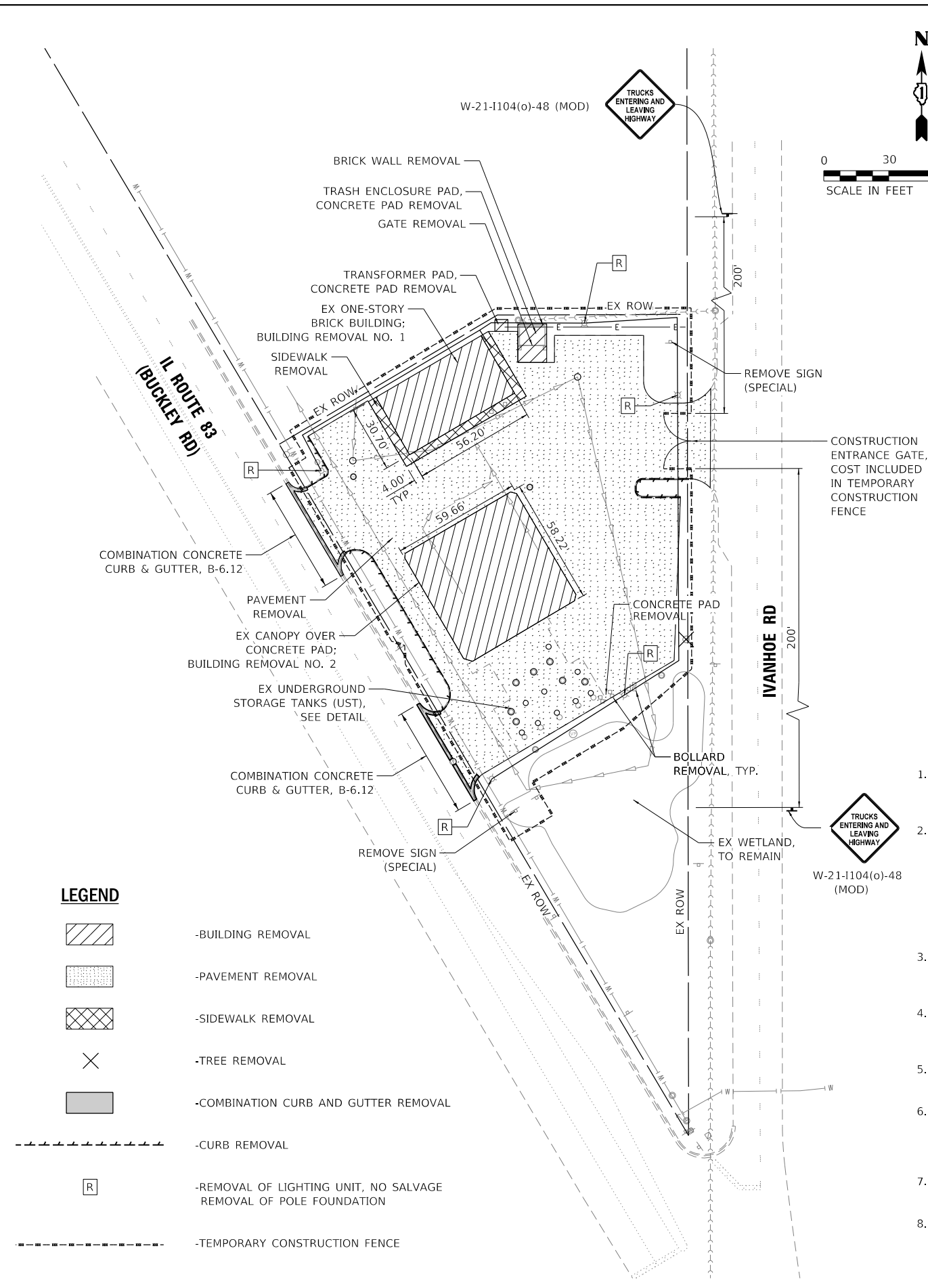
**STATE OF ILLINOIS
DEPARTMENT OF TRANSPORTATION**

**SUMMARY OF QUANTITIES - 3 OF 4
491 S. IL ROUTE 83, GRAYSLAKE, IL 60030**

SCALE: SHEET OF SHEETS STA. TO STA.

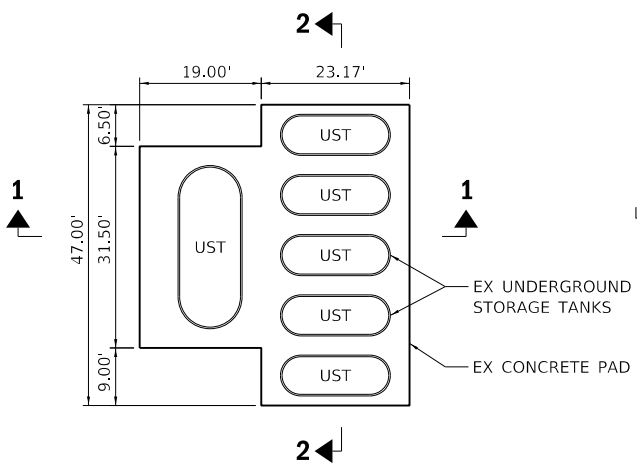
F.A.P. RTE.	SECTION	COUNTY	TOTAL SHEETS	SHEET NO.
866	2020-197-DM	LAKE	13	5
			CONTRACT NO. 62M70	
		ILLINOIS	FED. AID PROJECT	

MODEL: Default
 FILE: 20231119_1911028_PTB101_0031WO_07_Building_Demolition_ContractCADD.CADD_Spaces62M70-01-003-Bldg_Demo_Plan.dwg
 CONTRACT: 2020-197-DM

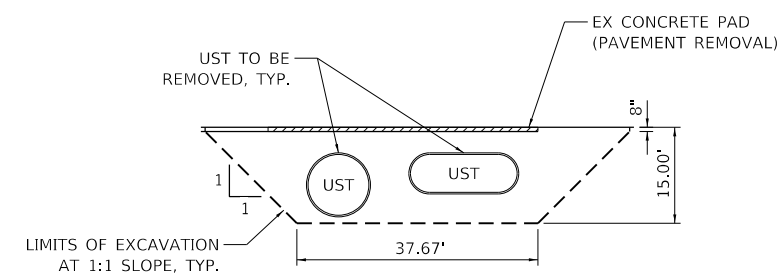


NOTES

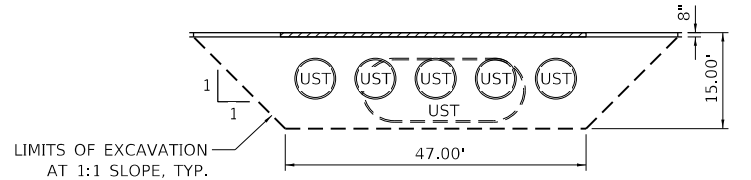
1. THE LOCATION, SIZE AND DEPTH OF STORAGE TANKS HAVE BEEN ASSUMED BASED ON DATA COLLECTED FROM VISUAL OBSERVATION. DEPTH OF MONITORING WELL WAS RECORDED AS 14 FT.
2. THE NUMBER OF STORAGE TANKS IS ASSUMED BASED ON THE NUMBER OF MANHOLES LOCATED ON THE CONCRETE PAD. THE TANKS ARE ASSUMED TO BE SPACED AT 3 FT AND STRAPPED DOWN TO DEADMAN ANCHORS AND LAID ON A PEA GRAVEL BEDDING OVER OIL SEPARATOR FABRIC. BASED ON OTHER REPORTS, THERE IS A POSSIBILITY THAT 3 LARGE TANKS AND 2 SMALL TANKS ARE PRESENT. THIS WORK SHALL BE PAID FOR AS UNDERGROUND STORAGE TANK REMOVAL AND SHALL INCLUDE REMOVAL OF ALL UNDERGROUND STORAGE TANKS AND ASSOCIATED APPURTENANCES IN THE AREA SHOWN.
3. THE BACKFILLING MATERIAL SHALL BE ACCORDING TO REMOVAL AND DISPOSAL OF REGULATED SUBSTANCES (PROJECT SPECIFIC) SPECIAL PROVISION AND PAID AS 30300001 AGGREGATE SUBGRADE IMPROVEMENT, CU. YD.
4. REMOVAL OF TREES LESS THAN 6 INCH, SHRUBS, BUSHES, SAPLINGS, WEEDS, STUMPS AND OTHER VEGETATION SHALL BE INCLUDED IN THE UNIT PRICE FOR SELECTIVE CLEARING (Z0064600).
5. THE CONTRACTOR'S VEHICLES, EQUIPMENT, AND OPERATIONS SHALL NOT ENCRANCH UPON THE IL ROUTE 83 AND IVANHOE ROAD TRAVELLED WAY AT ANY TIME.
6. CONTRACTOR SHALL INSTALL "TRUCKS ENTERING AND LEAVING HIGHWAY" W21-1104(o)-48 (MODIFIED) IN EACH DIRECTION ON IVANHOE ROAD APPROACHING BUILDING DEMOLITION SITE. THESE SIGNS SHALL BE PAID FOR AS TEMPORARY INFORMATION SIGNING.
7. REFER TO UTILITY REMOVAL PLAN FOR LOCATIONS OF EXISTING DRAINAGE AND UTILITY STRUCTURES AND PIPES TO BE PLUGGED AND ABANDONED IN PLACE.
8. THE REMOVAL AND DISPOSAL OF ALL DEBRIS AND / OR OBJECTS, INCLUDING GARBAGE BINS, CEMENT BLOCKS, PLANTING POTS, TIMBER LOGS, CABINETS, CAR TIRES, LAUNDRY BASKETS, PLASTIC BASKETS AND ANY OTHER STRUCTURES AND ITS FOUNDATIONS THAT ARE NOT PART OF THE BUILDING REMOVAL WITHIN THE CONSTRUCTION LIMITS SHALL BE INCLUDED IN THE UNIT PRICE FOR DEBRIS REMOVAL.
9. BUILDING REMOVAL NO. 1 CONSISTS OF COMPLETE REMOVAL AND DISPOSAL OF A ONE-STORY CONVENIENCE STORE, INCLUDING ALL ITS CONTENTS, TOGETHER WITH ALL FOUNDATIONS, CANOPY, SIGNS AND UTILITIES DOWN TO A PLANE 4 FT BELOW EXISTING GRADE. THE BUILDING WAS BUILT IN 1990 AND CONSISTS OF A COOLER ROOM, AN OFFICE, TWO RESTROOMS, MISCELLANEOUS FURNITURE, TRASH AND ROOFTOP UNITS, NO BASEMENT. THE BUILDING ALSO HAS DISCONNECTED CCTV CAMERAS MOUNTED ON LIGHT POLES, ACROSS THE LOT.
10. BUILDING REMOVAL NO. 2 CONSISTS OF COMPLETE REMOVAL AND DISPOSAL OF THE DETACHED CANOPY INCLUDING THE CONCRETE PAD WITH FOUR GAS PUMPS AND ASSOCIATED APPURTENANCES. REMOVAL ITEM SHALL INCLUDE ALL SIGNS, LIGHT FIXTURES, ELECTRICAL APPURTENANCES, SUPPORTING COLUMNS, BEAMS AND FOUNDATIONS DOWN TO A PLANE 4 FT BELOW EXISTING GRADE.
11. POLE FOUNDATION SHALL BE REMOVED UP TO 4 FT. BELOW EXISTING GRADE.



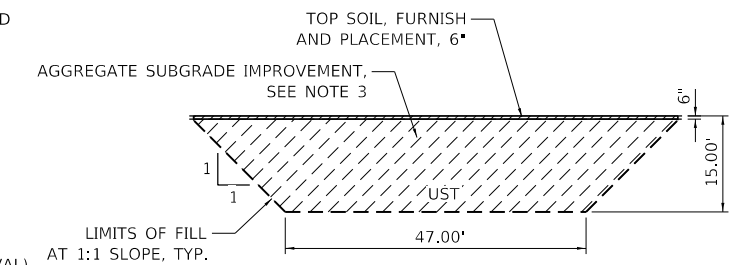
UNDERGROUND STORAGE TANK (UST) - PLAN VIEW
(SEE NOTES 1 AND 2)



SECTION 1-1
(SEE NOTES 1 AND 2)



SECTION 2-2 (REMOVAL)
(SEE NOTES 1 AND 2)



SECTION 2-2 (PROPOSED)
(SEE NOTES 1 2, AND 3)

LEGEND

	-BUILDING REMOVAL
	-PAVEMENT REMOVAL
	-SIDEWALK REMOVAL
	-TREE REMOVAL
	-COMBINATION CURB AND GUTTER REMOVAL
	-CURB REMOVAL
	-REMOVAL OF LIGHTING UNIT, NO SALVAGE REMOVAL OF POLE FOUNDATION
	-TEMPORARY CONSTRUCTION FENCE

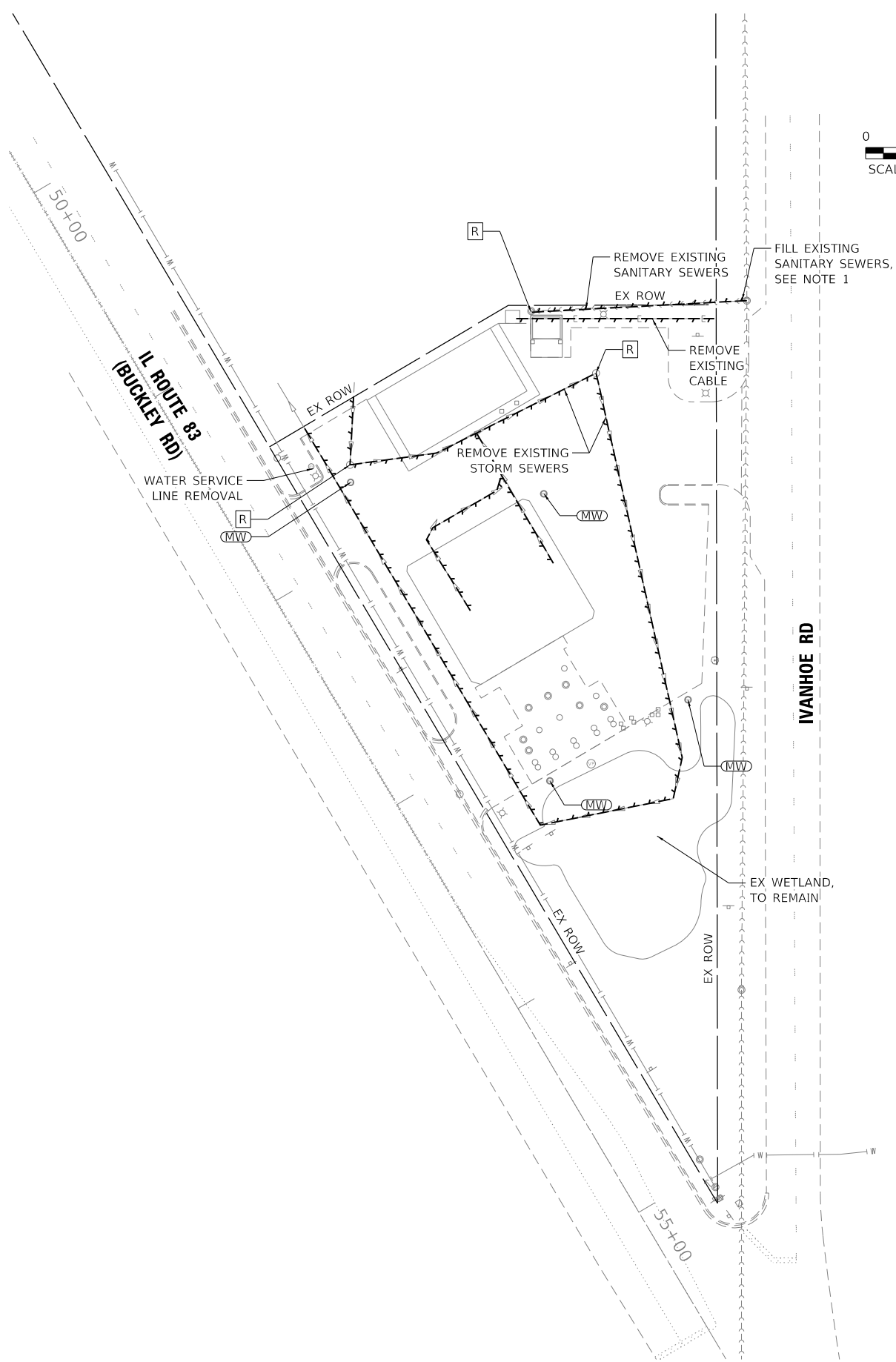
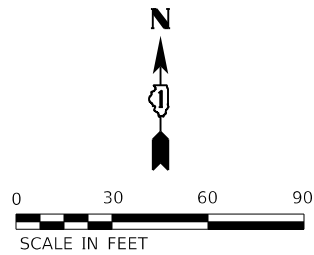


USER NAME = wnohamed	DESIGNED - AWM	REVISED -
	DRAWN - AWM	REVISED -
PLOT SCALE = 60.0000' / in.	CHECKED - JA	REVISED -
PLOT DATE = 12/17/2020	DATE - 09/25/2020	REVISED -

**STATE OF ILLINOIS
DEPARTMENT OF TRANSPORTATION**

BUILDING DEMOLITION PLAN			
491 S. IL ROUTE 83, GRAYSLAKE, IL 60030			
SCALE:	SHEET	OF SHEETS	STA. TO STA.

F.A.P. RTE.	SECTION	COUNTY	TOTAL SHEETS	SHEET NO.
866	2020-197-DM	LAKE	13	7
CONTRACT NO. 62M70				
ILLINOIS FED. AID PROJECT				



NOTES

1. THE CONNECTION OF THE EXISTING SANITARY SEWER TO THE SANITARY MANHOLE SHALL BE FILLED/PLUGGED.
2. FILLING/PLUGGING OF SANITARY SEWER AND REMOVAL OF WATER SERVICE LINE SHALL BE COORDINATED WITH THE VILLAGE OF GRAYSLAKE.

LEGEND

- -REMOVE EXISTING
- [R] -REMOVE CATCH BASINS / SANITARY MANHOLE
- (MW) -MONITORING WELL, REMOVE UP TO 4 FT. BELOW GRADE. REMAINING DEPTH TO BE SEALED AND ABANDONED

MODEL: D:\dgn\...
 FILE NAME: S:\2019\1911028_PTB1\1_003\WO_07_Building_Demolition_Contract\CADD\CADD_Spaces\62M70\ch-009-Utility_Removal_Plan.dgn

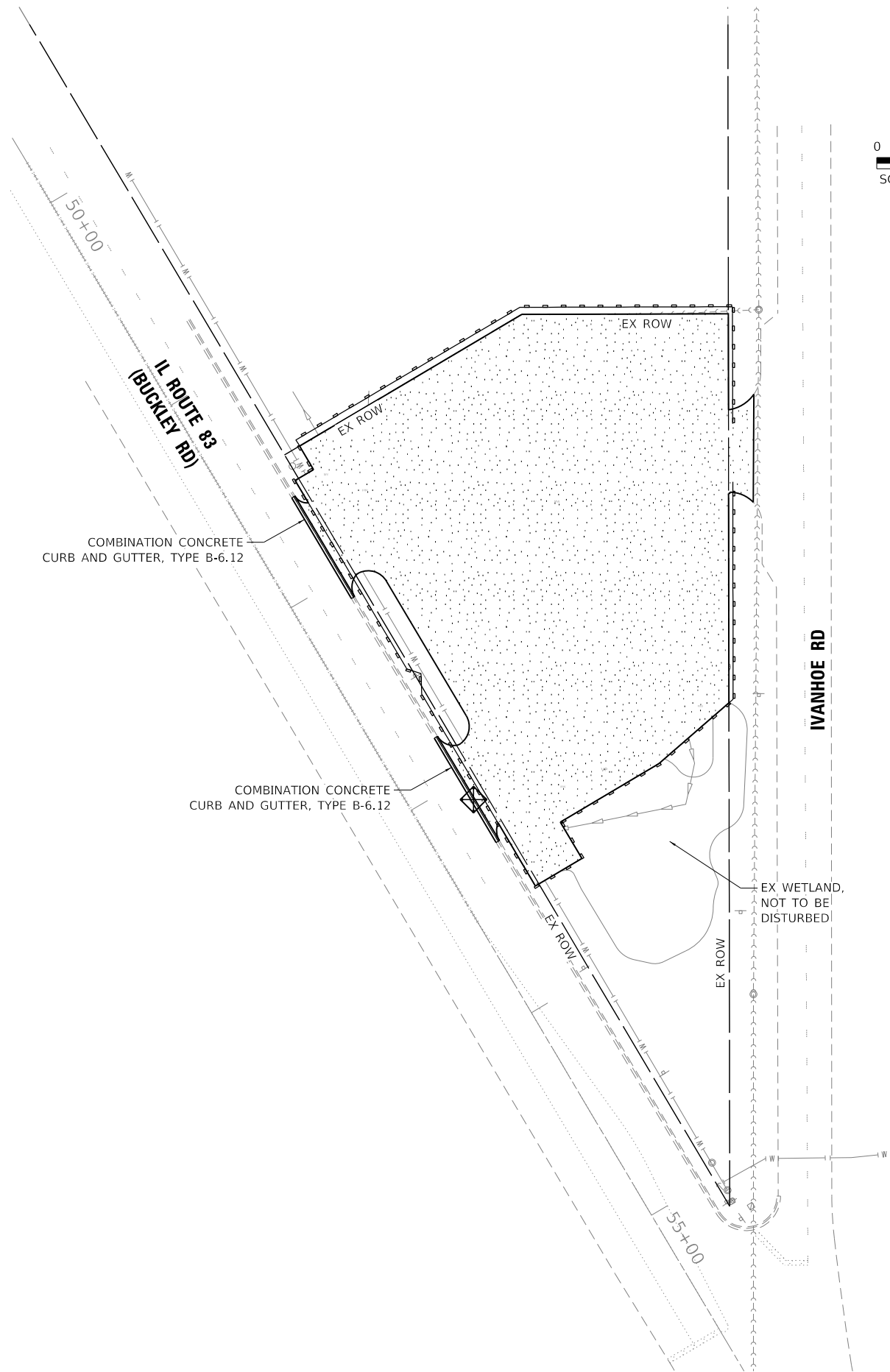
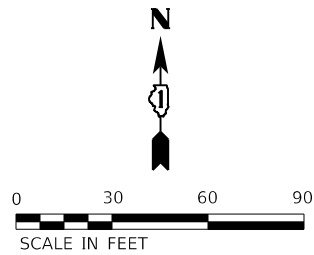


USER NAME = wnohamed	DESIGNED - AWM	REVISED -
DRAWN - AWM	CHECKED - JA	REVISED -
PLOT SCALE = 60.0000' / in.	DATE - 09/25/2020	REVISED -
PLOT DATE = 12/4/2020		

STATE OF ILLINOIS
DEPARTMENT OF TRANSPORTATION

UTILITY REMOVAL PLAN 491 S. IL ROUTE 83, GRAYSLAKE, IL 60030	
SCALE:	SHEET OF SHEETS STA. TO STA.




F.A.P. RTE.	SECTION	COUNTY	TOTAL SHEETS	SHEET NO.
866	2020-197-DM	LAKE	13	9
ILLINOIS FED. AID PROJECT			CONTRACT NO. 62M70	



NOTES

1. ALL EROSION CONTROL MEASURES SHALL BE IN ACCORDANCE WITH THE PROCEDURES AND STANDARDS FOR URBAN SOIL EROSION AND SEDIMENTATION CONTROL MANUAL.
2. SOIL DISTURBANCE SHALL BE CONDUCTED IN SUCH A MANNER AS TO MINIMIZE EROSION. SOIL STABILIZATION MEASURES SHALL CONSIDER THE TIME OF THE YEAR, SITE CONDITIONS, AND THE USE OF TEMPORARY OR PERMANENT MEASURES.
3. SOIL EROSION AND SEDIMENTATION CONTROL MEASURES SHALL BE CONSTRUCTED PRIOR TO COMMENCEMENT OF UPLAND DISTURBANCE.
4. TEMPORARY SOIL STABILIZATION SHALL BE APPLIED TO DISTRIBUTED AREAS WITHIN 14 CALENDAR DAYS OF THE END OF THE ACTIVE HYDRAULIC DISTURBANCE. PERMANENT STABILIZATION SHALL BE DONE WITHIN 14 DAYS AFTER COMPLETION OF THE FINAL GRADING OF THE SOIL.
5. ALL TEMPORARY EROSION AND SEDIMENT CONTROL MEASURES SHALL BE REMOVED WITHIN 30 DAYS AFTER FINAL SITE STABILIZATION IS ACHIEVED OR AFTER TEMPORARY MEASURES ARE NO LONGER NEEDED. TRAPPED SEDIMENT AND OTHER DISTURBED AREAS SHALL BE PERMANENTLY STABILIZED.
6. ALL TEMPORARY AND PERMANENT EROSION CONTROL MEASURES MUST BE MAINTAINED AND REPAIRED AS NEEDED. THE GENERAL CONTRACTOR WILL BE RESPONSIBLE FOR INSPECTION AND REPAIR DURING CONSTRUCTION.
7. THE EROSION CONTROL MEASURES INDICATED ON THE PLANS ARE THE MINIMUM REQUIREMENTS. ADDITIONAL MEASURES MAY BE REQUIRED, AS DIRECTED BY THE ENGINEER OR GOVERNING AGENCY.

LEGEND

-  -PROP. TOPSOIL FURNISH AND PLACE, 6"
-PROP. SEEDING, CLASS 2
-PROP. MULCH, METHOD 1
-  -PERIMETER EROSION BARRIER
-  -INLET FILTERS

MODEL: D:\ef\it...
 FILE NAME: S:\2019\191108\028_PTB101_003\WO_07_Building_Demo\Ibid_Contract\CADD\CADD_Sheets\62M70\07-01-Landscaping & ESC_Plan.dgn



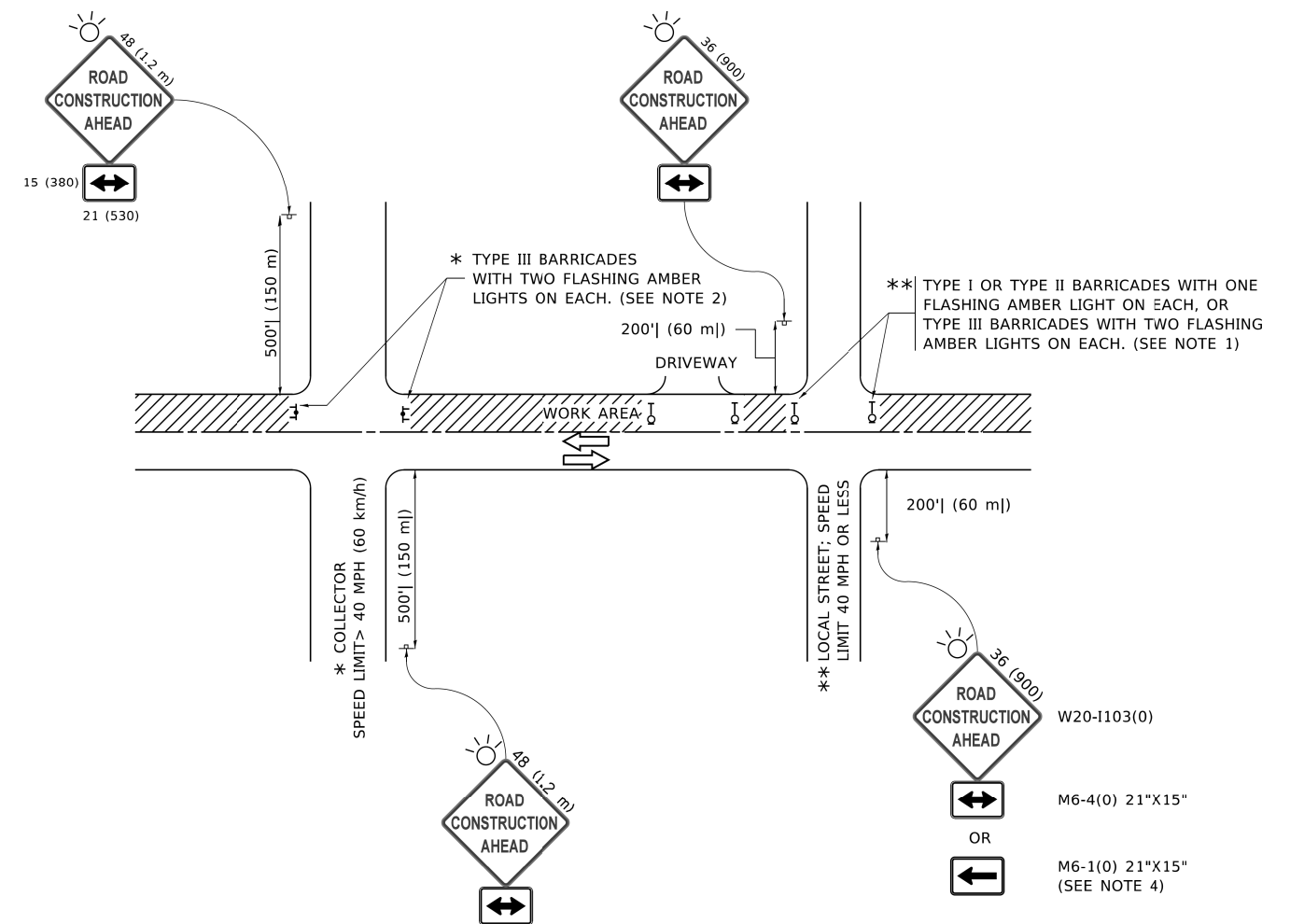
USER NAME = wnohamed	DESIGNED - AWM	REVISED -
	DRAWN - AWM	REVISED -
PLOT SCALE = 60.0000' / in.	CHECKED - JA	REVISED -
PLOT DATE = 12/4/2020	DATE - 09/25/2020	REVISED -

**STATE OF ILLINOIS
DEPARTMENT OF TRANSPORTATION**

**LANDSCAPING AND EROSION CONTROL PLAN
491 S. IL ROUTE 83, GRAYSLAKE, IL 60030**

SCALE: SHEET OF SHEETS STA. TO STA.

F.A.P. RTE.	SECTION	COUNTY	TOTAL SHEETS	SHEET NO.
866	2020-197-DM	LAKE	13	10
ILLINOIS FED. AID PROJECT			CONTRACT NO. 62M70	



NOTES:

- SIDE ROAD WITH A SPEED LIMIT OF 40 MPH (60 km/h) OR LESS AS SHOWN ON THE DRAWING AND AS DIRECTED BY THE ENGINEER:
 - ONE "ROAD CONSTRUCTION AHEAD" SIGN 36 x 36 (900x900) WITH A FLASHER MOUNTED ON IT APPROXIMATELY 200' (60 m) IN ADVANCE OF THE MAIN ROUTE.
 - THE CLOSED PORTION OF THE MAIN ROUTE SHALL BE PROTECTED BY BLOCKING WITH TYPE I, TYPE II OR TYPE III BARRICADES, 1/3 OF THE CROSS SECTION OF THE CLOSED PORTION.
- SIDE ROAD WITH A SPEED LIMIT GREATER THAN 40 MPH (60 km/h) AS SHOWN ON THE DRAWING AND AS DIRECTED BY THE ENGINEER:
 - ONE "ROAD CONSTRUCTION AHEAD" SIGN 48 x 48 (1.2 m x 1.2 m) WITH A FLASHER MOUNTED ON IT APPROXIMATELY 500' (150 m) IN ADVANCE OF THE MAIN ROUTE.
 - THE CLOSED PORTION OF THE MAIN ROUTE SHALL BE PROTECTED BY BLOCKING WITH TYPE III BARRICADES, 1/2 OF THE CROSS SECTION OF THE CLOSED PORTION.
- CONES MAY BE SUBSTITUTED FOR BARRICADES OR DRUMS AT HALF THE SPACING DURING DAY OPERATIONS. CONES SHALL BE A MINIMUM OF 28 (710) IN HEIGHT.
- SIGNING AND THE WORK ZONE, A SINGLE HEADED ARROW (M6-1) SHALL BE USED IN LIEU OF THE DOUBLE HEADED ARROW (M6-4).
- WHEN WORK IS BEING PERFORMED ON A SIDE ROAD OR DRIVEWAY, FOLLOW THE APPLICABLE STANDARD(S). THE DIRECTIONAL ARROW (M6-1 OR M6-4) SHALL BE COVERED OR REMOVED WHEN NO LONGER CONSISTENT WITH THE TRAFFIC CONTROL SET-UP.
- ADVANCE WARNING SIGNS ARE TO BE OMITTED ON DRIVEWAYS UNLESS OTHERWISE SPECIFIED IN THE PLANS OR BY THE ENGINEER.
- THE TRAFFIC CONTROL AND PROTECTION FOR SIDE ROADS, INTERSECTIONS, AND DRIVEWAYS SHALL BE INCLUDED IN THE COST OF SPECIFIED TRAFFIC CONTROL STANDARDS OR ITEMS.

All dimensions are in inches (millimeters) unless otherwise shown.

MODEL: Default
FILE: \\nrt1010848EBD\NTEG\Illinois.gov\PIV\DOT\Documents\DOT_Offices\District_1\Projects\DS\5272\31\CADD\Draw\CAD\Sheets\10.dgn

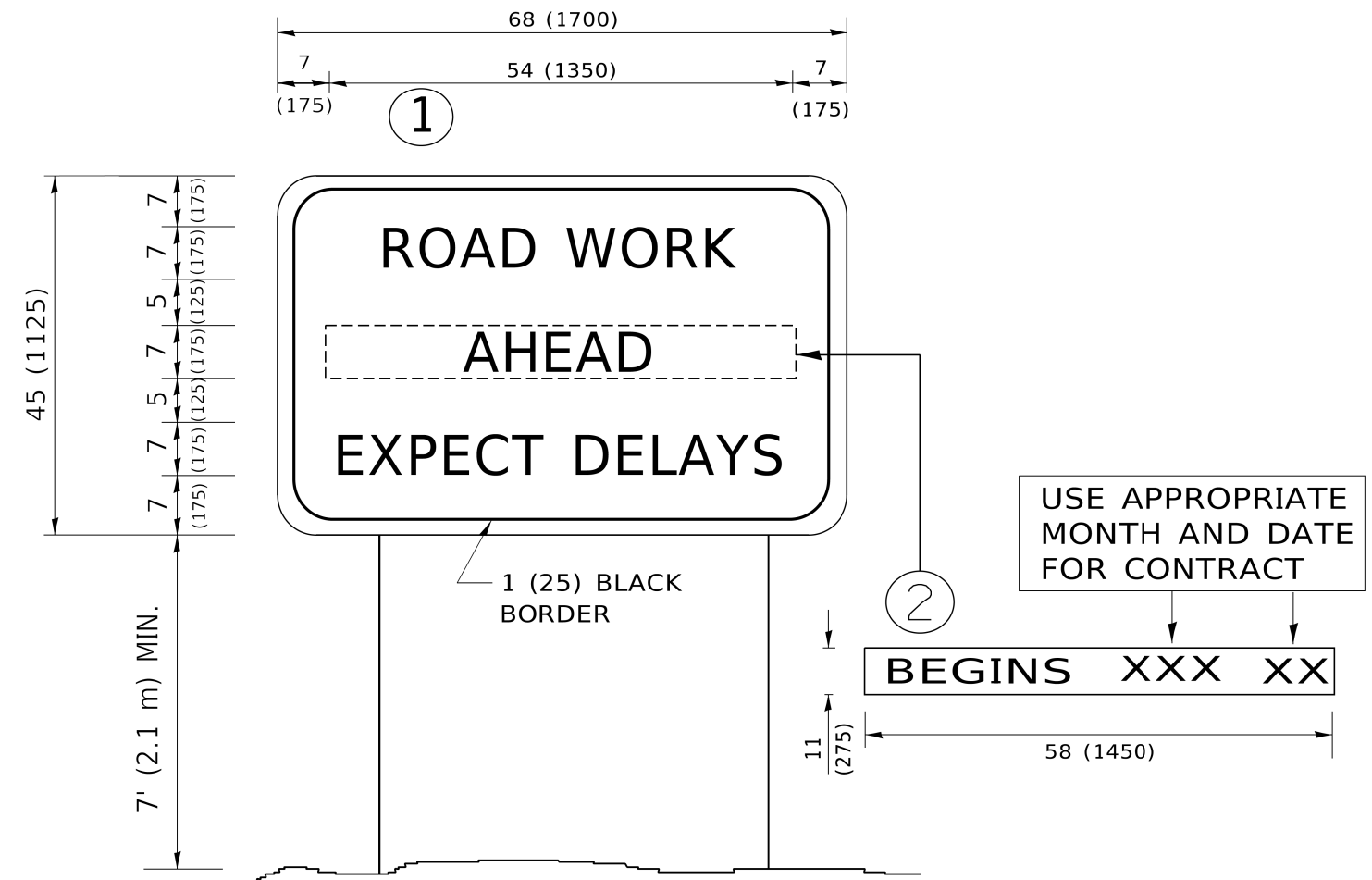
USER NAME = footemj	DESIGNED - L.H.A.	REVISED - A. HOUSEH 10-15-96
	DRAWN -	REVISED - T. RAMMACHER 01-06-00
PLOT SCALE = 50.0000' / 1"	CHECKED -	REVISED - A. SCHUETZE 07-01-13
PLOT DATE = 3/4/2019	DATE - 06-89	REVISED - A. SCHUETZE 09-15-16

**STATE OF ILLINOIS
DEPARTMENT OF TRANSPORTATION**

**TRAFFIC CONTROL AND PROTECTION FOR
SIDE ROADS, INTERSECTIONS, AND DRIVEWAYS**

SCALE: NONE SHEET 1 OF 1 SHEETS STA. TO STA.

F.A.P. RTE.	SECTION	COUNTY	TOTAL SHEETS	SHEET NO.
866	2020-197-DM	LAKE	13	12
TC-10			CONTRACT NO. 62M70	
ILLINOIS FED. AID PROJECT				



NOTES:

1. USE BLACK LETTERING ON ORANGE BACKGROUND.
2. ERECT SIGNS IN ADVANCE OF THE LOCATION FOR THE "ROAD CONSTRUCTION AHEAD" SIGN AT LOCATIONS AS DIRECTED BY THE ENGINEER.
3. ERECT SIGN ① WITH INSTALLED PANEL ② ONE WEEK PRIOR TO THE START OF CONSTRUCTION.
4. REMOVE PANEL ② SOON AFTER THE START OF CONSTRUCTION.
5. SEE SPECIAL PROVISION FOR "TEMPORARY INFORMATION SIGNING" FOR ADDITIONAL INFORMATION.
6. ONE SIGN ASSEMBLY EQUALS 25.70 SQ. FT. (2.3 SQ. M.)
7. SHALL BE PAID FOR AS TEMPORARY INFORMATION SIGNING.

ALL DIMENSIONS ARE IN INCHES (MILLIMETERS) UNLESS OTHERWISE SHOWN.

MODEL: Default
 FILE NAME: p:\u0108\FEB\NTEG_IL\mils.gov\PI\DOT\Documents\DOT_Offices\District_1\Projects\DS\22\2-1\CAD\Drawn\CAD\sheet\122.dgn

USER NAME = footemj	DESIGNED -	REVISED - R. MIRS 09-15-97
	DRAWN -	REVISED - R. MIRS 12-11-97
PLOT SCALE = 50.0000 ' / ft.	CHECKED -	REVISED - T. RAMMACHER 02-02-99
PLOT DATE = 3/4/2019	DATE -	REVISED - C. JUCIUS 01-31-07

**STATE OF ILLINOIS
DEPARTMENT OF TRANSPORTATION**

**ARTERIAL ROAD
INFORMATION SIGN**

SCALE: NONE SHEET 1 OF 1 SHEETS STA. TO STA.

F.A.P. RTE.	SECTION	COUNTY	TOTAL SHEETS	SHEET NO.
866	2020-197-DM	LAKE	13	13
TC-22		CONTRACT NO. 62M70		
ILLINOIS FED. AID PROJECT				