

RTE.	SECTION	COUNTY	TOTAL SHEETS	SHEET NO.
VAR.	D6 SIGNAL/LIGHTING 2021	VARIOUS	3	1
		ILLINOIS	CONTRACT NO. 72M63	

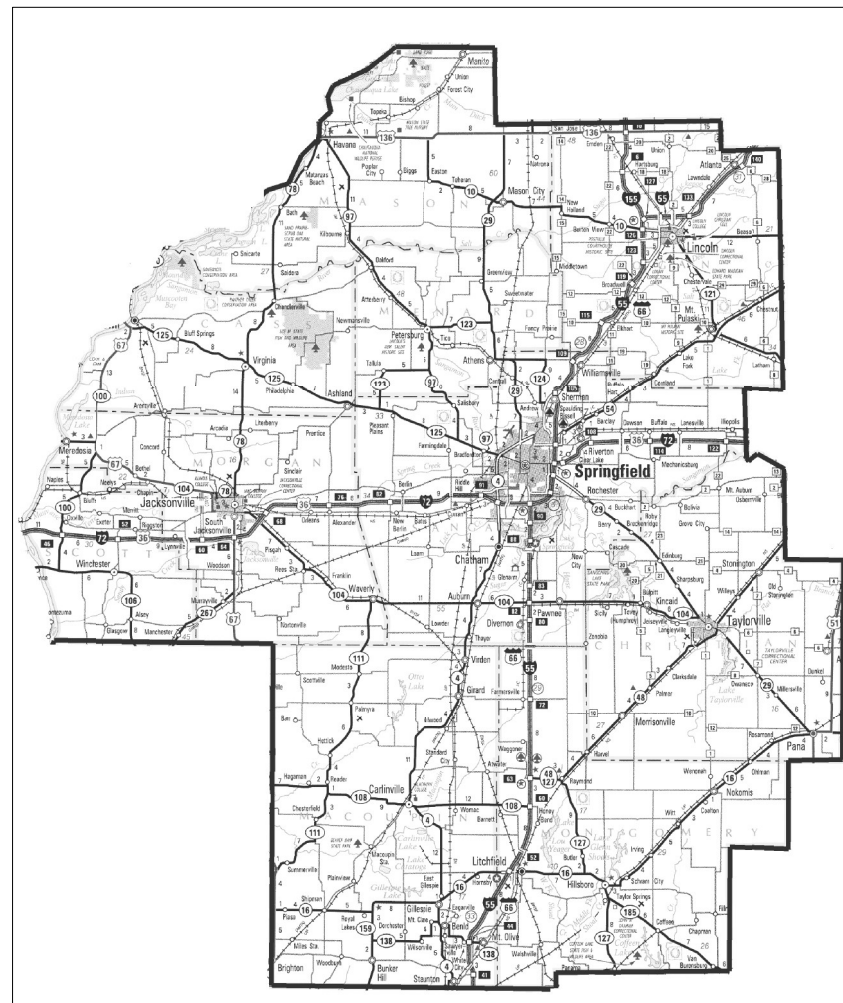
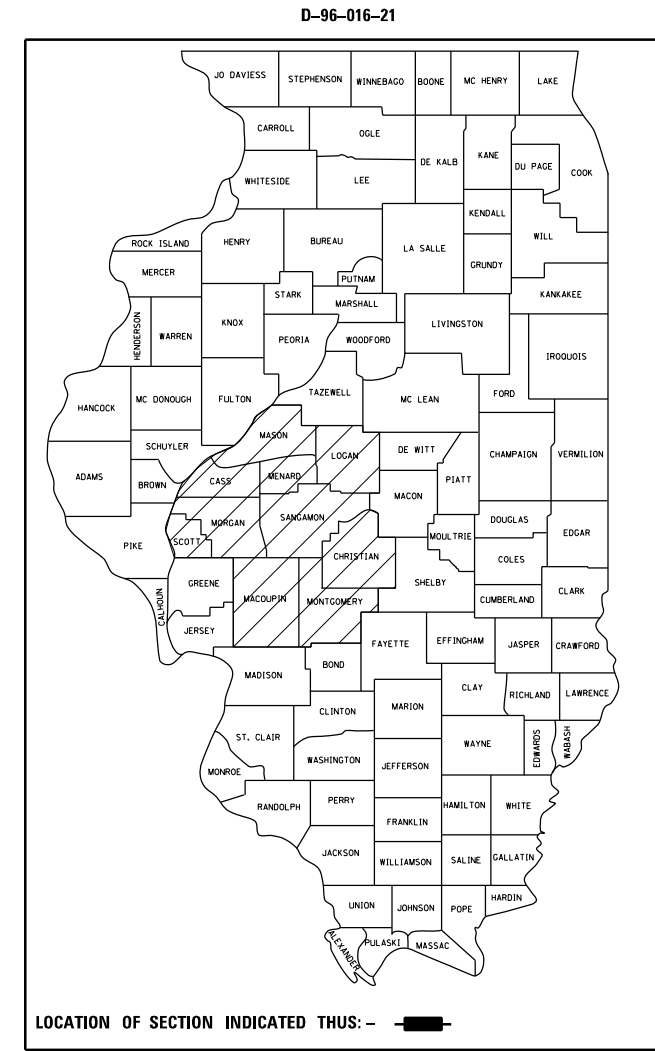
**STATE OF ILLINOIS**  
**DEPARTMENT OF TRANSPORTATION**  
**DIVISION OF HIGHWAYS**

**PROPOSED**  
**IMPROVEMENTS**

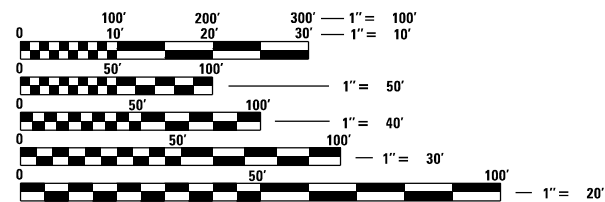
**VARIOUS ROUTES**  
**SECTION D6 SIGNAL/LIGHTING 2021**  
**SIGNAL & LIGHTING MAINTENANCE**

**VARIOUS COUNTIES**  
**C96-030-21**

FOR INDEX OF SHEETS, SEE SHEET NO. 2



LOCATION MAP



FULL SIZE PLANS HAVE BEEN PREPARED USING STANDARD ENGINEERING SCALES. REDUCED SIZED PLANS WILL NOT CONFORM TO STANDARD SCALES. IN MAKING MEASUREMENTS ON REDUCED PLANS, THE ABOVE SCALES MAY BE USED.

J.U.L.I.E.  
 JOINT UTILITY LOCATION INFORMATION FOR EXCAVATION  
 1-800-892-0123  
 OR 811

PROJECT ENGINEER : MIKE IRWIN - (217)524-7765  
 PROJECT MANAGER : TIM SHARP - (217)524-9160

CONTRACT NO. 72M63

STATE OF ILLINOIS  
 DEPARTMENT OF TRANSPORTATION  
 DIVISION OF HIGHWAYS

SUBMITTED December 11 20 20

*Jeff P. Myer*  
 REGIONAL ENGINEER

January 29, 2021

*Scott A. Elk*  
 ENGINEER OF DESIGN AND ENVIRONMENT

January 29, 2021

*James J. ...*  
 DIRECTOR OF HIGHWAYS PROJECT IMPLEMENTATION 13

**PRINTED BY THE AUTHORITY**  
**OF THE STATE OF ILLINOIS**

INDEX OF SHEETS

1. COVER
2. INDEX OF SHEETS AND HIGHWAY STANDARDS
3. SUMMARY OF QUANTITIES AND GENERAL NOTES

HIGHWAY STANDARDS

- 701001-02 OFF-RD OPERATIONS, 2L, 2W, MORE THAN 15' AWAY FROM EDGE OF PAVEMENT
- 701006-05 OFF-RD OPERATIONS, 2L, 2W, 15' TO 24" FROM PAVEMENT EDGE
- 701011-04 OFF-RD MOVING OPERATION, 2L, 2W, DAY ONLY
- 701101-05 OFF-RD OPERATIONS, MULTILANE, 15' TO 24" FROM PAVEMENT EDGE
- 701106-02 OFF RD OPERATIONS, MULTILANE, MORE THAN 15' AWAY
- 701201-05 LANE CLOSURE, 2L, 2W, DAY ONLY, FOR SPEEDS ≥ 45 MPH
- 701206-05 LANE CLOSURE, 2L, 2W, NIGHT ONLY, FOR SPEEDS ≥ 45 MPH
- 701301-04 LANE CLOSURE, 2L, 2W, SHORT TIME OPERATIONS
- 701306-04 LANE CLOSURE, 2L, 2W, SLOW MOVING OPERATIONS DAY ONLY, FOR SPEED ≥ 45 MPH
- 701311-03 LANE CLOSURE, 2L, 2W, MOVING OPERATIONS - DAY ONLY
- 701401-12 LANE CLOSURE, FREEWAY/EXPRESSWAY
- 701406-12 LANE CLOSURE, FREEWAY/EXPRESSWAY, DAY OPERATIONS ONLY
- 701411-09 LANE CLOSURE, MULTILANE, AT ENTRANCE OR EXIT RAMP, FOR SPEEDS ≥ 45 MPH
- 701421-08 LANE CLOSURE, MULTILANE, DAY OPERATIONS ONLY, OR SPEEDS ≥ 45 MPH TO 55 MPH
- 701422-10 LANE CLOSURE, MULTILANE, FOR SPEEDS ≥ 45 MPH TO 55 MPH
- 701428-01 TRAFFIC CONTROL SETUP AND REMOVAL, FREEWAY/EXPRESSWAY
- 701446-09 TWO LANE CLOSURE FREEWAY/EXPRESSWAY
- 701451-05 RAMP CLOSURE FREEWAY/EXPRESSWAY
- 701456-05 PARTIAL EXIT RAMP CLOSURE FREEWAY/EXPRESSWAY
- 701501-06 URBAN LANE CLOSURE, 2L, 2W, UNDIVIDED
- 701502-09 URBAN LANE CLOSURE, 2L, 2W, WITH BIDIRECTIONAL LEFT TURN LANE
- 701601-09 URBAN LANE CLOSURE, MULTILANE, 1W OR 2W WITH NONTRAVERSABLE MEDIAN
- 701602-10 URBAN LANE CLOSURE, MULTILANE, 2W WITH BIDIRECTIONAL LEFT TURN LANE
- 701606-10 URBAN LANE CLOSURE, MULTILANE, 2W WITH MOUNTABLE MEDIAN
- 701701-10 URBAN LANE CLOSURE, MULTILANE INTERSECTION
- 701901-08 TRAFFIC CONTROL DEVICES
- 000001-08 STANDARD SYMBOLS, ABBREVIATIONS AND PATTERNS
- 701400-10 APPROACH TO LANE CLOSURE, FREEWAY/EXPRESSWAY
- 701426-10 LANE CLOSURE, MULTILANE, INTERMITTENT OR MOVING OPERATION, FOR SPEEDS > 45 MPH
- 701427-05 LANE CLOSURE, MULTILANE, INTERMITTENT OR MOVING OPERATION, FOR SPEEDS < 40 MPH
- 701801-06 SIDEWALK, CORNER OR CROSSWALK CLOSURE

REV. - MS

FILE NAME =	USER NAME = SHARPTD	DESIGNED -	REVISED -	<b>STATE OF ILLINOIS DEPARTMENT OF TRANSPORTATION</b>	<b>INDEX OF SHEETS AND HIGHWAY STANDARDS</b>	RTE.	SECTION	COUNTY	TOTAL SHEETS	SHEET NO.
S:\CONTRMAINT_CAD\72M63 D6 LIGHTING - EAST\Plans\0672M63-sht2-genote.dgn	DRAWN -	REVISED -	VAR. D6			SIGNAL/LIGHTING 2021	VARIOUS	3	2	
Default	PLOT SCALE = 58.2266' / in.	CHECKED -	REVISED -					CONTRACT NO. 72M63		
	PLOT DATE = 12/8/2020	DATE -	REVISED -			SCALE:	SHEET OF SHEETS	STA. TO STA.	ILLINOIS FED. AID PROJECT	

				6-00361-9992	
				CONSTR. CODE	
				TOTAL QUANTITY	
				100% STATE	
				0021	
CODE NO.	ITEM	UNIT	QUANTITY	RURAL	
X1400035	150W HPS LAMP/NON CYCLING	EACH	20	20	
X1400036	250W HPS LAMP/NON CYCLING	EACH	380	380	
X1400037	400W HPS LAMP/NON CYCLING	EACH	150	150	
X1400039	150W-240V HPS TRANSFORMER KIT	EACH	4	4	
X1400040	250W-240V HPS TRANSFORMER KIT (GE)	EACH	6	6	
X1400041	250W-480V HPS TRANSFORMER KIT (GE)	EACH	4	4	
X1400042	250W-480V HPS TRANSFORMER KIT (HOLOPHANE)	EACH	20	20	
X1400043	12" SIGNAL HEAD W/O VISOR (POLYCARBONATE)	EACH	6	6	
X1400044	12" SIGNAL HEAD VISOR (POLYCARBONATE)	EACH	12	12	
X1400045	ELASTIMOLD FUSE HOLDER	EACH	50	50	
X1400046	RED MARKING PAINT	EACH	120	120	
X1400047	SOLID STATE NEMAFLASHER	EACH	8	8	
X1400048	SOLID STATE NEMALOAD SWITCH	EACH	40	40	
X1400049	12" LED MODULE (GREEN)	EACH	4	4	
X1400050	12" LED MODULE (YELLOW)	EACH	4	4	
X1400051	12" LED MODULE (RED)	EACH	4	4	
X1400052	250W-240V HPS TRANSFORMER KIT (HOLOPHANE)	EACH	6	6	
X1400054	150W-480V HPS TRANSFORMER KIT	EACH	12	12	
X1400055	400W-240V HPS TRANSFORMER KIT	EACH	4	4	
X1400056	400W-480V HPS TRANSFORMER KIT	EACH	12	12	
X1400057	FNM 10 BUSS FUSE	EACH	260	260	
X1400058	10 AMP CONTROL FUSE	EACH	70	70	
X1400063	#6 USE WIRE	FOOT	3,400	3,400	
X1400064	#10 USE WIRE	FOOT	6,000	6,000	
X1400065	1 INCH UNIDUCT	FOOT	400	400	
X1400066	SURRESTOR	EACH	70	70	
X1400067	SET 4 BREAKAWAY COUPLERS (TRANSP0 4100)	EACH	20	20	
X1400068	45' WEATHERING STEEL POLE (VALMONT)	EACH	2	2	
X1400069	53' WEATHERING STEEL POLE (VALMONT)	EACH	2	2	
X1400070	50' ALUMINUM 15' DAVIT ARM POLE	EACH	2	2	
X1400071	50' ALUMINUM 15' DUAL DAVIT ARM POLE	EACH	2	2	
X1400074	BUS INTERFACE UNIT	EACH	8	8	
X1400076	COBALT CONTROLLER	EACH	2	2	
X1400209	45' ALUMINUM LIGHT POLE WITH 15' DAVIT ARM	EACH	2	2	
X1400361	1-PORT MOXA GIGABIT ETHERNET MODULE "SFP-1GLXLC-T"	EACH	2	2	
X1400362	AUTOSCOPE VISON COMM MANAGER	EACH	4	4	
X1400363	MOXA "ADS-510E-3GTXSFP-T" ETHERNET SWITCH WITH DIN RAIL POWER SUPPLY	EACH	2	2	
X1400364	AXIS MODEL 06042-E DOME CAMERA ASSEMBLY	EACH	2	2	
X8250230	PHOTOCELL	EACH	20	20	
X8710029	FIBER OPTIC CABLE 24 FIBERS, SINGLE MODE	FOOT	1,000	1,000	
XP000001	JOURNEYMAN ELECTRICIAN	HOUR	1,880	1,880	
XP000003	JOURNEYMAN ELECTRICIAN WITH OVERTIME	HOUR	16	16	
XP000004	JOURNEYMAN ELECTRICIAN SATURDAY OVERTIME	HOUR	16	16	
XP000005	JOURNEYMAN ELECTRICIAN SUNDAY/HOLIDAY OVERTIME	HOUR	16	16	
XP000009	PICK-UP TRUCK	HOUR	856	856	
XP000010	BUCKET TRUCK (LENGTH LESS THAN 35 FEET)	HOUR	280	280	
XP000011	BUCKET TRUCK (LENGTH 35 TO 65 FEET)	HOUR	508	508	

**GENERAL NOTES**

This work is located on various routes in Mason, Menard, Cass, Morgan, Scott, Logan, Sangamon, Christian, Montgomery and Macoupin counties all located within Region 4, District 6. The work included in this section consists of maintaining and repairing the electrical systems and all other work necessary to complete this section.

The locations of the repair areas shall be determined by the engineer.

All work is to be replaced in kind or, as indicated on the contract plans or provisions.

Removal of damaged materials will include dismantling, loading, hauling, and disposal.

Any necessary traffic control will be provided by the contractor; appropriate standards are listed on Sheet No. 2. Traffic control shall not be paid for as separate pay items, but shall be considered a part of the contract.

The work site shall be left in a safe and orderly condition.

No material should be left on or near the roadway during non-working hours.

All excavated material, which includes digging or grading of any soil or fill material, with the exception of aggregate fills, must be left on, or incorporated within, the IDOT right-of-way due to environmental documentation requirements.

Any work order may be cancelled at the engineer's discretion.

English units of measurement shall govern over and supersede any metric units in this contract. Where included, metric units are for information only.

Electronic files and/or electronic survey information including CADD files will not be available for this project to the contractor.

No overnight lane closures will be allowed, unless emergency conditions exist.

Any reference to a standard in these plans shall be interpreted to mean the edition as indicated by the subnumber shown in the list of standards or the copy included in these plans.

FILE NAME = S:\CONTRMAINT_CAD\72M63 D6 LIGHTING - EAST\Plans\0672M63-shr3-500.dgn	USER NAME = SHARPTD	DESIGNED - _____	REVISED - _____
SHT.PLAN	PLOT SCALE = 2.9644' / in.	DRAWN - _____	REVISED - _____
	PLOT DATE = 12/8/2020	CHECKED - _____	REVISED - _____
		DATE - _____	REVISED - _____

**STATE OF ILLINOIS  
DEPARTMENT OF TRANSPORTATION**

**SUMMARY OF QUANTITIES AND GENERAL NOTES**

SCALE: \_\_\_\_\_ SHEET \_\_\_\_\_ OF \_\_\_\_\_ SHEETS STA. \_\_\_\_\_ TO STA. \_\_\_\_\_

RTE.	SECTION	COUNTY	TOTAL SHEETS	SHEET NO.
VAR.	D6 SIGNAL/LIGHTING 2021	VARIOUS	3	3
			CONTRACT NO. 72M63	
ILLINOIS FED. AID PROJECT				