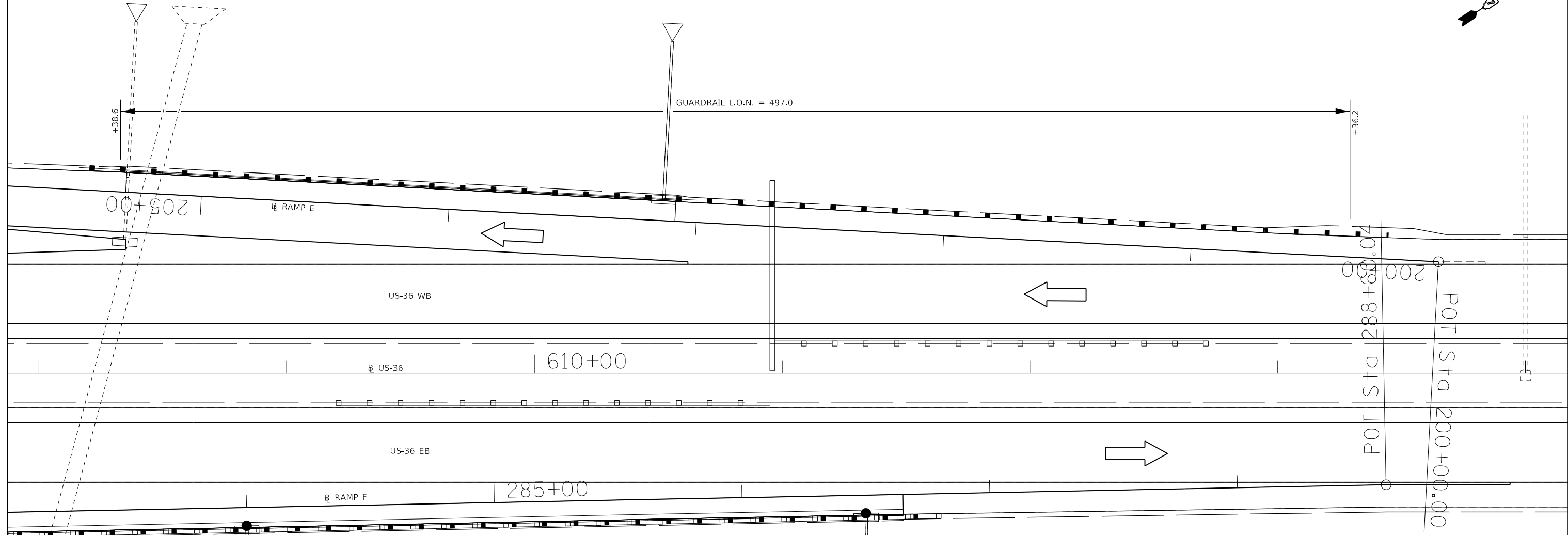
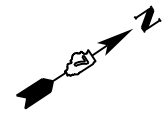
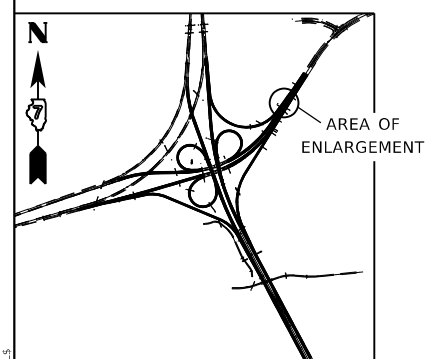


GUARDRAIL DETAILS - LOCATION 4

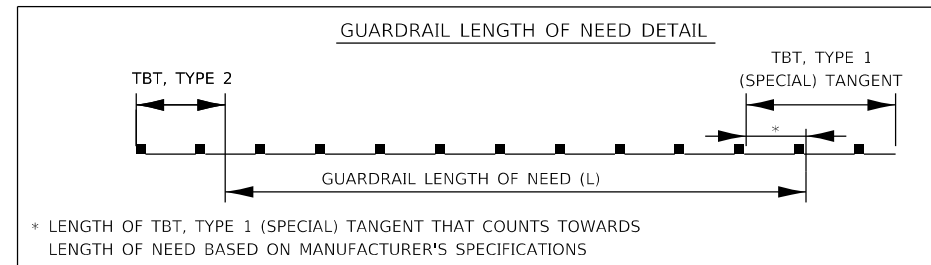


1

STATION	OFFSET	TO	STATION	OFFSET	STEEL PLATE BEAM GUARDRAIL TYPE A, 9 FOOT POSTS (FOOT)	TRAFFIC BARRIER TERMINAL, TYPE 2 (EACH)	TRAFFIC BARRIER TERMINAL, TYPE 1 (SPECIAL) TANGENT (EACH)	GUARDRAIL REMOVAL (FOOT)	TERMINAL MARKER - DIRECT APPLIED (EACH)	GUARDRAIL REFLECTORS, TYPE A (EACH)
RAMP E										
200+20.63	8.0' RT		200+70.63	8.0' RT			1.0		1.0	
200+70.63	8.0' RT		205+33.13	8.0' RT	463.0			428.0		6.0
205+33.13	8.0' RT		205+45.63	8.0' RT		1.0				
SUB TOTAL RAMP E					463.0	1.0	1.0	428.0	1.0	6.0



1 REVISED 2-23-2021



MODEL NUMBER: MAMTMS
FILE NAME: 811E15

USER NAME = SUSERS	DESIGNED -	REVISED -
	DRAWN -	REVISED -
PLOT SCALE = 5/8"=1'	CHECKED -	REVISED -
PLOT DATE = 5/24/21	DATE -	REVISED -

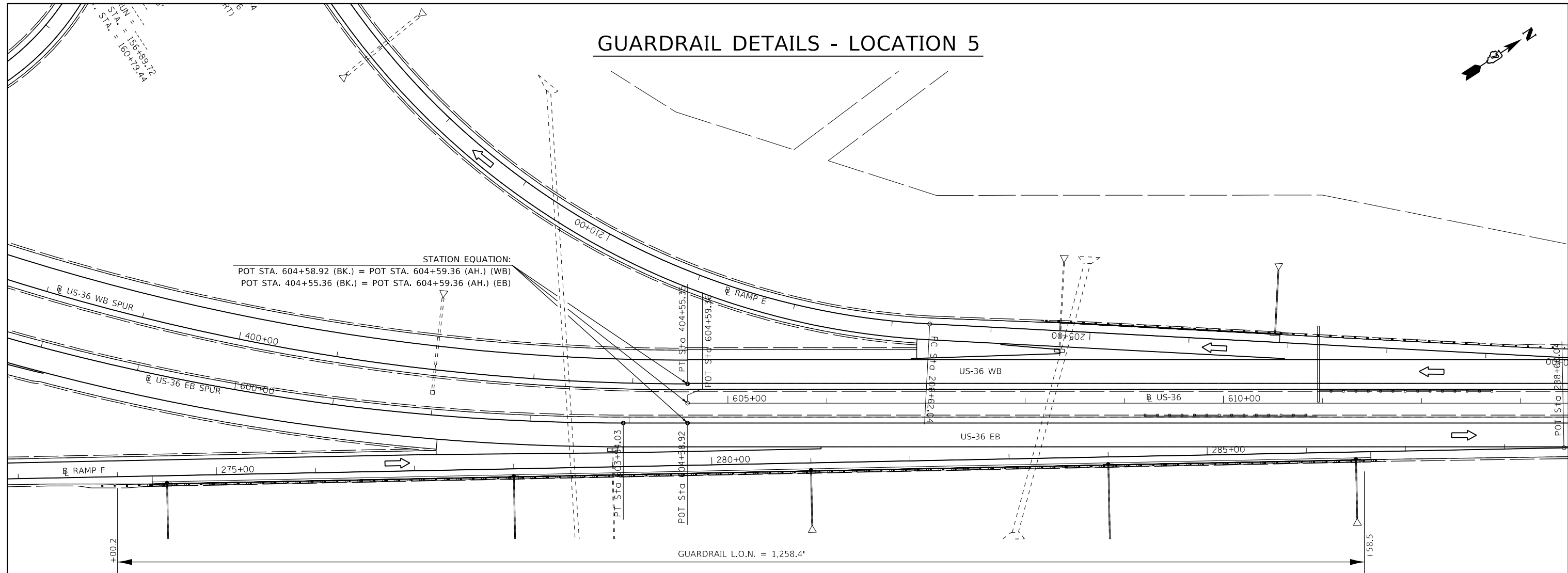
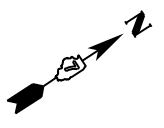
**STATE OF ILLINOIS
DEPARTMENT OF TRANSPORTATION**

GUARDRAIL DETAILS

SCALE: SHEET 4 OF 5 SHEETS STA. TO STA.

F.A.P. RTE.	SECTION	COUNTY	TOTAL SHEETS	SHEET NO.
*	(58-62)RS	MACON	74	51
* - FAP 322A / FAP 323			CONTRACT NO. 74544	
ILLINOIS FED. AID PROJECT				

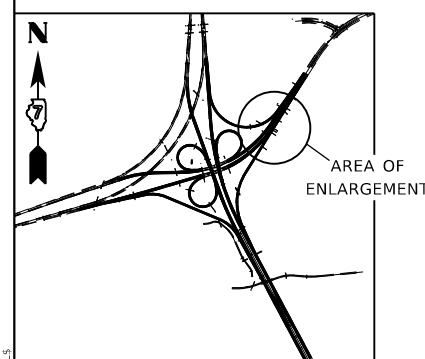
GUARDRAIL DETAILS - LOCATION 5



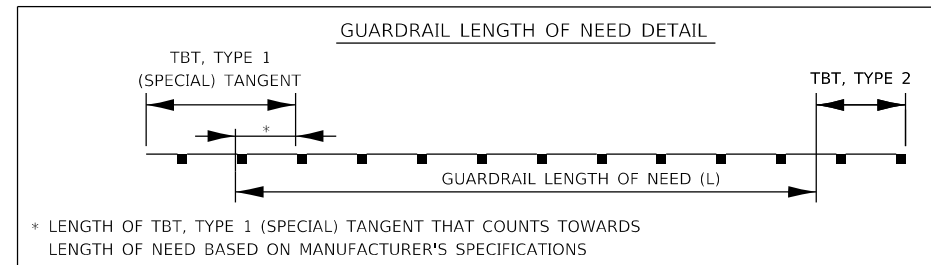
GUARDRAIL L.O.N. = 1,258.4'

1

STATION	OFFSET	TO	STATION	OFFSET	STEEL PLATE BEAM GUARDRAIL TYPE A, 9 FOOT POSTS (FOOT)	TRAFFIC BARRIER TERMINAL, TYPE 2 (EACH)	TRAFFIC BARRIER TERMINAL, TYPE 1 (SPECIAL) TANGENT (EACH)	GUARDRAIL REMOVAL (FOOT)	TERMINAL MARKER - DIRECT APPLIED (EACH)	GUARDRAIL REFLECTORS, TYPE A (EACH)
RAMP F										
273+83.54	8.0' RT		274+33.54	8.0' RT			1.0		1.0	
274+33.54	8.0' RT		286+58.54	8.0' RT	1,225.0			1,263.0		8.0
286+58.54	8.0' RT		286+71.04	8.0' RT		1.0				
SUB TOTAL RAMP F					1,225.0	1.0	1.0	1,263.0	1.0	8.0



1 REVISED 2-23-2021



MODEL: M001E1M1M1E
FILE NAME: 811E1E

USER NAME = SUSERS	DESIGNED -	REVISED -
PLOT SCALE = 5/8"=1'	DRAWN -	REVISED -
PLOT DATE = 5/20/21	CHECKED -	REVISED -
	DATE -	REVISED -

**STATE OF ILLINOIS
DEPARTMENT OF TRANSPORTATION**

GUARDRAIL DETAILS

SCALE: SHEET 5 OF 5 SHEETS STA. TO STA.

F.A.P. RTE.	SECTION	COUNTY	TOTAL SHEETS	SHEET NO.
*	(58-62)RS	MACON	74	52
* - FAP 322A / FAP 323			CONTRACT NO. 74544	
ILLINOIS FED. AID PROJECT				