

F.A.S. RTE.	SECTION	COUNTY	TOTAL SHEETS	SHEET NO.
7807	17-00329-00-RS	ADAMS	15	1

CONTRACT NO. 93758

INDEX OF SHEETS 03-05-2021 LETTING ITEM 122

SEE SHEET #2

HIGHWAY STANDARDS

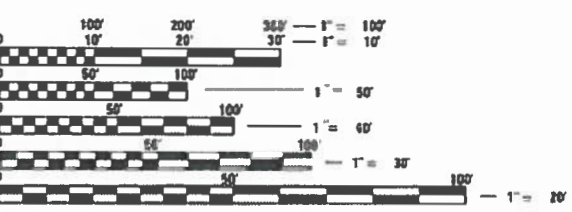
SEE SHEET #2

DESIGN DESIGNATIONS

FAU 7807 (MAINE STREET): URBAN MINOR ARTERIAL
ADT = 5850 (2019); DESIGN SPEED: 30 MPH

PROJECT DESCRIPTION

PROJECT CONSISTS OF MILLING AND OVERLAY, CURB REPAIR, PATCHING, PCC SIDEWALK REPLACEMENT, ADA SIDEWALK RAMPS ALONG WITH OTHER MISCELLANEOUS APPURTENANCES.



FULL SIZE PLANS HAVE BEEN PREPARED USING STANDARD ENGINEERING SCALES. REDUCED SIZED PLANS WILL NOT CONFORM TO STANDARD SCALES. IN MAKING MEASUREMENTS ON REDUCED PLANS, THE ABOVE SCALES MAY BE USED.

J.U.L.I.E.
JOINT UTILITY LOCATION INFORMATION FOR EXCAVATION
1-800-892-0123
OR 811

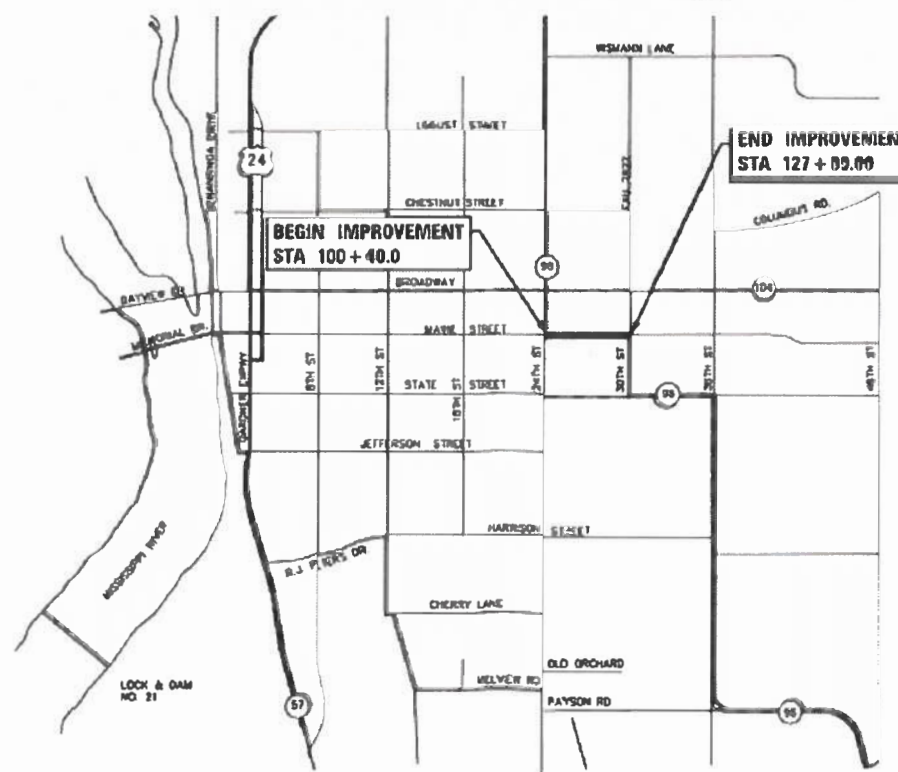
- UTILITIES**
- AT&T (TELEPHONE) 1-309-757-5762
 - AMEREN IL (ELECTRIC & GAS) 1-888-859-4540
 - COMCAST (CABLE) 1-800-934-6489
 - CITY OF QUINCY (SEWER & SIGNALS) 1-217-228-4527
 - ADAMS (FIBER) 1-217-214-3423

CONTRACT NO. 93758

STATE OF ILLINOIS
DEPARTMENT OF TRANSPORTATION
DIVISION OF HIGHWAYS
PLANS FOR PROPOSED
MAINE STREET – 24TH to 30TH RESURFACING
FAU ROUTE 7807
CITY OF QUINCY, ADAMS COUNTY, ILLINOIS

JOB NUMBER C-96-212-17
SECTION 17-00329-00-RS
PROJECT 9UZW(460)

FUNDING – STU /MFT



LOCATION MAP

LENGTH OF IMPROVEMENT = 2,669.00 FT (0.51 MILES)



PLANS PREPARED BY THE CITY OF QUINCY
DEPARTMENT OF UTILITIES
AND ENGINEERING



LOCATION OF SECTION INDICATED THUS: -

QUINCY



Steve E. Bange 11/10/2020
DATE
STEVE E. BANGE, P.E.
REGISTERED PROFESSIONAL ENGINEER
STATE OF ILLINOIS NO 062-053338
LICENSE EXPIRES NOVEMBER 30, 2021

STATE OF ILLINOIS DEPARTMENT OF TRANSPORTATION	
APPROVED <i>[Signature]</i> 11-17-20 20 20	CITY OF QUINCY, MAYOR
PASSED <i>[Signature]</i> Jan. 7, 2021	DISTRICT 6 ENGINEER OF LOCAL ROADS AND STREETS
RELEASED FOR BID <i>[Signature]</i> Jan. 7, 2021	REGION FOUR ENGINEER

INDEX OF SHEETS

1	COVER SHEET
2	INDEX OF SHEETS, HIGHWAY STANDARDS, AND GENERAL NOTES
3-4	SUMMARY OF QUANTITIES
5	TYPICAL SECTIONS
6	SCHEDULE OF QUANTITIES
7-9	MAINE STREET PLAN & PROFILE
10-12	MAINE STREET PAVEMENT MARKING PLAN
13	DETECTOR LOOP REPLACEMENT / REPAIR
14	MISCELLANEOUS DETAILS - ENTRANCES
15	MISCELLANEOUS DETAILS - TRAFFIC CONTROL & PROTECTION

HIGHWAY STANDARDS

000001-08	STANDARD SYMBOLS, ABBREVIATIONS AND PATTERNS
424001-11	PERPENDICULAR CURB RAMPS FOR SIDEWALKS
442201-03	CLASS C AND D PATCHES
606001-07	CONCRETE CURB TYPE B AND COMBINATION CONCRETE CURB AND GUTTER
701001-02	OFF-ROAD OPERATIONS, 2L, 2W, MORE THAN 15''(4.5 M) AWAY
701006-05	OFF-ROAD OPERATIONS, 2L, 2W, 15''(4.5 M) TO 24''(600 MM) FROM PAVEMENT EDGE
701011-04	OFF-ROAD MOVING OPERATIONS, 2L, 2W, DAY ONLY
701301-04	LANE CLOSURE, 2L, 2W, SHORT TIME OPERATIONS
701311-03	LANE CLOSURE, 2L, 2W, MOVING OPERATIONS - DAY ONLY
701701-10	URBAN LANE CLOSURE, MULTILANE INTERSECTION
701801-06	SIDEWALK, CORNER OR CROSSWALK CLOSURE
701901-08	TRAFFIC CONTROL DEVICES
886001-01	DETECTOR LOOP INSTALLATIONS
886006-01	TYPICAL LAYOUT FOR DETECTION LOOPS

GENERAL NOTES

- THE NOMINAL THICKNESS FOR BASE AND SURFACE ARE SHOWN ON THE TYPICAL SECTIONS, STANDARDS, SCHEDULES, OR SPECIAL DETAILS. THE CONSTRUCTED THICKNESS OF THE ABOVE ITEMS SHALL NOT BE LESS THAN 90 PERCENT OF THE NOMINAL THICKNESS AT ANY LOCATION.
- THE CONTRACTOR SHALL PROTECT AND CAREFULLY PRESERVE ALL PROPERTY MARKERS AND MONUMENTS UNTIL THE OWNER, AUTHORIZED AGENT, OR LAND SURVEYOR HAS WITNESSED OR OTHERWISE REFERENCED THEIR LOCATION. WHERE SECTION OR SUB-SECTION MONUMENTS ARE ENCOUNTERED, THE ENGINEER SHALL BE NOTIFIED BEFORE SUCH MONUMENTS ARE REMOVED. THE CONTRACTOR SHALL BE RESPONSIBLE FOR HAVING AN AUTHORIZED SURVEYOR RE-ESTABLISH ANY SECTION OR SUB-SECTION MONUMENTS DESTROYED BY HIS OPERATIONS.
- THE CONTRACTOR SHALL BE RESPONSIBLE FOR PROTECTING UTILITY PROPERTY FROM CONSTRUCTION OPERATIONS AS OUTLINED IN ARTICLE 107.39 OF THE STANDARD SPECIFICATIONS. THE J.U.L.I.E. NUMBER IS 1-800-892-0123. A MINIMUM OF 48 HOURS ADVANCE NOTICE IS REQUIRED.
- THE LOCATION OF BURIED AND ABOVE GROUND UTILITIES SHOWN ARE APPROXIMATE AND ARE SHOWN FOR THE CONTRACTOR INFORMATIONAL USE ONLY. LOCATIONS ARE NOT TO BE REFERENCED FOR CONSTRUCTION PURPOSES. THE IMPLIED PRESENCE OR ABSENCE OF UTILITIES IS NOT TO BE CONSTRUED BY THE THE OWNER, ENGINEER, CONTRACTOR, OR SUBCONTRACTORS TO BE AN ACCURATE AND COMPLETE REPRESENTATION OF UTILITIES THAT MAY OR MAY NOT EXIST ON THE CONSTRUCTION SITE. BURIED AND ABOVE GROUND UTILITY LOCATIONS, IDENTIFICATION, AND MARKING ARE THE SOLE RESPONSIBILITY OF THE CONTRACTOR. REROUTING, DISCONNECTION, PROTECTION, ETC. OF ANY UTILITIES MUST BE COORDINATED BETWEEN THE CONTRACTOR, UTILITY COMPANY, AND OWNER. SITE SAFETY, INCLUDING THE AVOIDANCE OF HAZARDS ASSOCIATED WITH BURIED AND ABOVE GROUND UTILITIES, REMAINS THE SOLE RESPONSIBILITY OF THE CONTRACTOR.
- IN ADDITION TO FIELD SURVEYS, PLAN DIMENSIONS AND DETAILS RELATIVE TO THE EXISTING FACILITES HAVE BEEN TAKEN FROM EXISTING PLANS AND ARE SUBJECT TO CONSTRUCTION VARIATIONS. IT SHALL BE THE CONTRACTORS RESPONSIBILITY TO VERIFY SUCH DIMENSIONS AND DETAILS IN THE FIELD. SUCH VARIATIONS SHALL NOT BE A CAUSE FOR ADDITIONAL COMPENSATION DUE TO A CHANGE IN THE SCOPE OF WORK: HOWEVER, THE CONTRACTOR WILL BE PAID FOR THE QUANTITY ACTUALLY FURNISHED AT THE UNIT PRICE BID FOR THE WORK. THE THICKNESS OF BITUMINOUS MIXTURES SHOWN ON THE PLANS IS THE NOMINAL.
- ANY REFERENCE TO A STANDARD IN THESE PLANS SHALL BE INTERPRETED TO MEAN THE EDITION AS INDICATED BY THE SUB-NUMBER IN THE INDEX OF SHEETS OR THE COPY OF THE STANDARD INCLUDED IN THESE PLANS.
- ANY EXISTING ROAD SIGNS THAT INTERFERE WITH CONSTRUCTION WILL BE REMOVED OR RELOCATED AS DIRECTED BY THE ENGINEER. AFTER THE CONSTRUCTION IS COMPLETED, THE CONTRACTOR WILL REPLACE THE SIGNS AS DIRECTED BY THE ENGINEER. THIS WORK WILL BE DONE AT NO ADDITIONAL COST TO THE CITY.
- ALL SAW CUTS, NECESSARY TO COMPLETE THE WORK DETAILED IN THESE PLANS, SHALL BE INCLUDED IN THE COST FOR THE VARIOUS PAY ITEMS INVOLVED.
- SEEDING WILL NOT BE PERMITTED AT ANY TIME WHEN THE GROUND IS FROZEN, WET, OR IN AN UNTILLABLE CONDITION. LOCATIONS TO BE SEEDED SHALL BE DETERMINED BY THE ENGINEER.

RATES OF APPLICATION TABLE

AGGREGATE (SURFACE, BASE, SUBBASE, OR BACKFILL)	1.80 TON / CU YD
STONE DUMPED RIPRAP	1.50 TON / CU YD
HOT-MIX ASPHALT:	
BITUMINOUS MATERIALS (TACK COAT)	0.05 LB / SQ FT (on Concrete & milled HMA)
	0.025 LB / SQ FT (on HMA lifts & brick)
BITUMINOUS MATERIALS (PRIME COAT)	0.25 LB / SQ FT (on aggregate)
SURFACE / BINDER / LEVELING BINDER (112 lbs)	0.056 TON / SQ YD IN
SEEDING:	
NITROGEN FERTILIZER NUTRIENT	90 LBS / ACRE
PHOSPHORUS FERTILIZER NUTRIENT	90 LBS / ACRE
POTASSIUM FERTILIZER NUTRIENT	90 LBS / ACRE
AGRICULTURAL GROUND LIMESTONE	2.0 TON / ACRE
TEMPORARY EROSION CONTROL SEEDING	100 LBS / ACRE PER APPLICATION

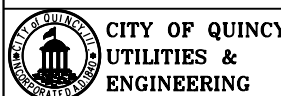
COMMITMENTS

NONE

MIXTURE REQUIREMENTS

LOCATION(S)	MAINE STREET & SIDE STREETS	MAINE STREET & SIDE STREETS
MIXTURE USE(S)	SURFACE	BINDER
AC/PG	SPS-PG 64-28	PG 64-22
DESIGN AIR VOIDS	4% N50 DESIGN	4% N50 DESIGN
MIXTURE COMPOSITION (MIXTURE GRADATION)	IL 9.5	IL 9.5
FRICTION AGGREGATE	MIX "D"	-
QUALITY MANAGEMENT	QC/QA	QC/QA

MODEL Dwg.in
FILE NAME: E:\PROJECT FILES\MFT229_Maine St. 24th to 30th\CADD_DRAWINGS\002_GenNotes_MFT229.dgn



USER NAME = sbange	DESIGNED -	REVISED -
	DRAWN -	REVISED -
PLOT SCALE = 40.0000 ' / in.	CHECKED -	REVISED -
PLOT DATE = 11/10/2020	DATE -	REVISED -

CITY OF QUINCY, ILLINOIS

**FAU 7807 (MAINE STREET)
GENERAL NOTES**

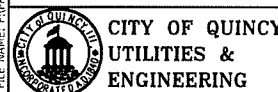
SCALE: NONE SHEET 1 OF 1 SHEETS STA. TO STA.

F.A.U. RTE.	SECTION	COUNTY	TOTAL SHEETS	SHEET NO.
7807	17-00329-00-RS	ADAMS	15	2
CONTRACT NO. 93758				
ILLINOIS FED. AID PROJECT				

#	PAY ITEM #	ITEM	UNIT	TOTAL QUANTITY	PARTICIPATING		NON-PARTICIPATING					
					ROADWAY							
					0005							
1	25000100	SEEDING, CLASS 1	ACRE	0.75	0.75							
2	25000400	NITROGEN FERTILIZER NUTRIENT	POUND	70	70							
3	25000500	PHOSPHORUS FERTILIZER NUTRIENT	POUND	70	70							
4	25000600	POTASSIUM FERTILIZER NUTRIENT	POUND	70	70							
5	25100105	MULCH, METHOD 1	ACRE	0.75	0.75							
6	35100300	AGGREGATE BASE COURSE, TYPE A 4"	SQ YD	542	542							
7	40600290	BITUMINOUS MATERIALS (TACK COAT)	POUND	1540	1540							
8	40600982	HOT-MIX ASPHALT SURFACE REMOVAL - BUTT JOINT	SQ YD	275	275							
9	40602978	HOT-MIX ASPHALT BINDER COURSE, IL- 9.5, N50	TON	937	937							
10	40604160	POLYMERIZED HOT-MIX ASPHALT SURFACE COURSE, IL-9.5, MIX "D", N50	TON	937	937							
11	42300200	PORTLAND CEMENT CONCRETE DRIVEWAY PAVEMENT, 6 INCH	SQ YD	365	365							
12	42300400	PORTLAND CEMENT CONCRETE DRIVEWAY PAVEMENT, 8 INCH	SQ YD	177	177							
13	42400100	PORTLAND CEMENT CONCRETE SIDEWALK 4 INCH	SQ FT	11206	11206							
14	42400300	PORTLAND CEMENT CONCRETE SIDEWALK 6 INCH	SQ FT	919	919							
*	15	42400800	DETECTABLE WARNINGS	SQ FT	60	60						
16	44000161	HOT-MIX ASPHALT SURFACE REMOVAL, 3"	SQ YD	10896	10896							
17	44000200	DRIVEWAY PAVEMENT REMOVAL	SQ YD	501	501							
18	44000500	COMBINATION CURB AND GUTTER REMOVAL	FOOT	158	158							
19	44000600	SIDEWALK REMOVAL	SQ FT	12554	12554							
20	44200094	PAVEMENT PATCHING, TYPE II, 8 INCH	SQ YD	6	6							
21	44200099	PAVEMENT PATCHING, TYPE III, 8 INCH	SQ YD	207	207							
22	60255800	MANHOLES TO BE ADJUSTED WITH NEW TYPE 1 FRAME, CLOSED LID	EACH	13	13							
23	60266600	VALVE BOXES TO BE ADJUSTED	EACH	17	17							
24	60603800	COMBINATION CONCRETE CURB AND GUTTER, TYPE B-6.12	FOOT	158	158							
*	25	67100100	MOBILIZATION	L SUM	1	1						
Δ	26	78000100	THERMOPLASTIC PAVEMENT MARKING - LETTERS AND SYMBOLS	SQ FT	62.4	62.4						
Δ	27	78000300	THERMOPLASTIC PAVEMENT MARKING - LINE 5"	FOOT	2790	2790						
Δ	28	78000400	THERMOPLASTIC PAVEMENT MARKING - LINE 6"	FOOT	1100	1100						
Δ	29	78000600	THERMOPLASTIC PAVEMENT MARKING - LINE 12"	FOOT	202	202						
Δ	30	78000650	THERMOPLASTIC PAVEMENT MARKING - LINE 24"	FOOT	133	133						

* - SPECIAL PROVISION Δ SPECIALTY ITEMS

MODEL DESIGNER: FILE NAME: P:\PROJECT FILES\M1329 Main St 24th to JUNCTION DRAWINGS\003 Summary_M1329.dgn



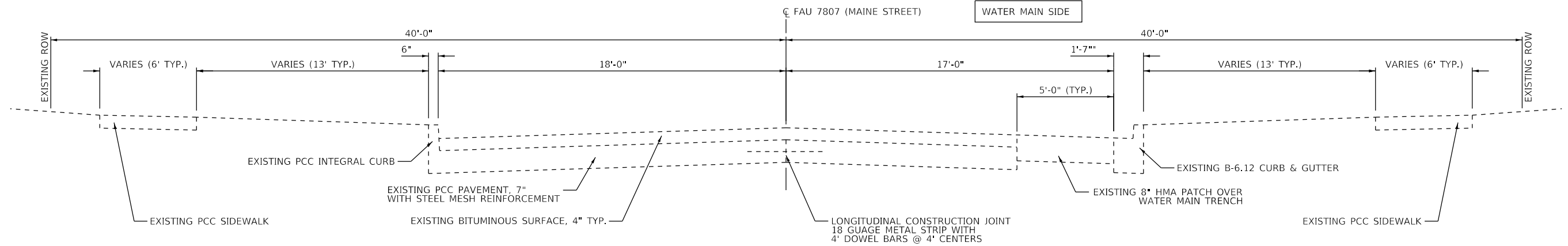
USER NAME = sbange	DESIGNED -	REVISED -
PLOT SCALE = 40.0000' / in.	DRAWN -	REVISED -
PLOT DATE = 11/10/2020	CHECKED -	REVISED -
	DATE -	REVISED -

CITY OF QUINCY, ILLINOIS

MAINE STREET
SUMMARY OF QUANTITIES

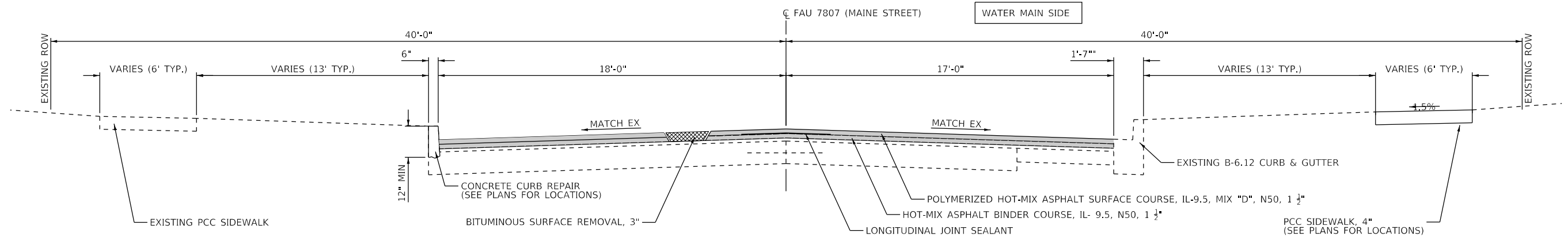
SCALE: SHEET 1 OF 2 SHEETS STA. TO STA.

F.A.U. RTE. 7807	SECTION 17-00329-00-RS	COUNTY ADAMS	TOTAL SHEETS 15	SHEET NO. 3
ILLINOIS FED. AID PROJECT			CONTRACT NO. 93758	



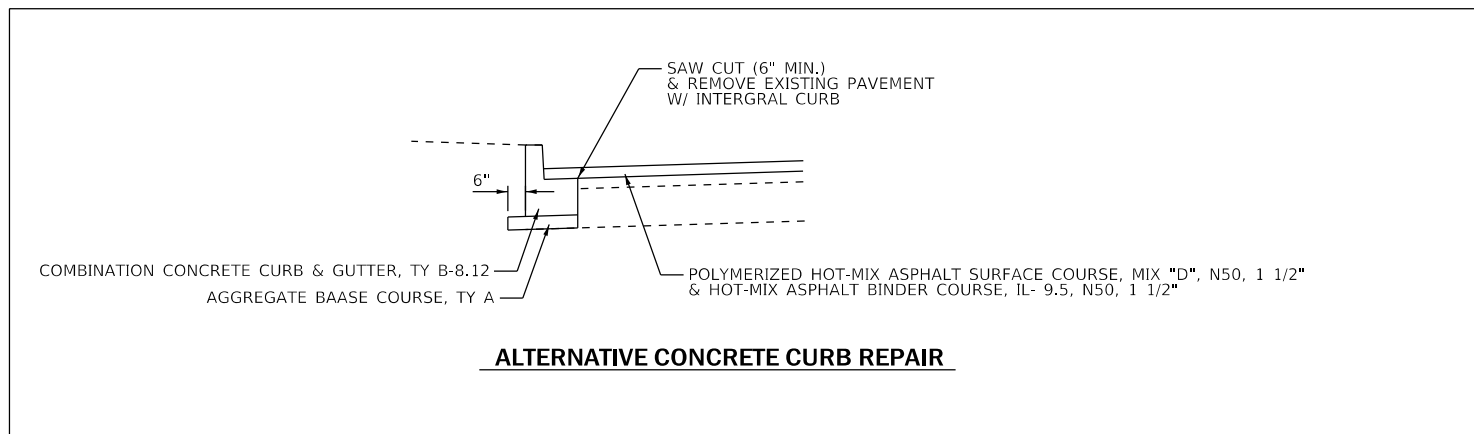
EXISTING TYPICAL SECTION

STA 100+40 to STA 106+10 WATER MAIN RT SIDE
 STA 106+10 to STA 115+87 WATER MAIN LT SIDE
 STA 115+87 to STA 123+43 WATER MAIN RT SIDE
 STA 123+43 to STA 127+09 NO WATER MAIN



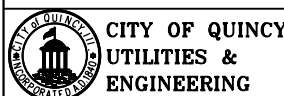
PROPOSED TYPICAL SECTION

STA 100+40 to STA 106+10 WATER MAIN RT SIDE
 STA 106+10 to STA 115+87 WATER MAIN LT SIDE
 STA 115+87 to STA 123+43 WATER MAIN RT SIDE
 STA 123+43 to STA 127+09 NO WATER MAIN



ALTERNATIVE CONCRETE CURB REPAIR

MODEL: D:\p\it... FILE NAME: E:\PROJECT FILES\MFT229_Maine St. 24th to 30th\CADD_DRAWINGS\005_TypicalSections_MFT229.dwg



USER NAME = sbange	DESIGNED -	REVISED -
PLOT SCALE = 40,0000 ' / in.	DRAWN -	REVISED -
PLOT DATE = 11/10/2020	CHECKED -	REVISED -
	DATE -	REVISED -

CITY OF QUINCY, ILLINOIS

**FAU 7807 (MAINE STREET)
TYPICAL SECTIONS**

SCALE: None SHEET 1 OF 1 SHEETS STA. - TO STA. -

F.A.U. RTE.	SECTION	COUNTY	TOTAL SHEETS	SHEET NO.
7807	17-00329-00-RS	ADAMS	15	5
CONTRACT NO. 93758				
ILLINOIS FED. AID PROJECT				

SEEDING SCHEDULE						
LOCATION		SEEDING CLASS 1	NITROGEN FERTILIZER NUTRIENT	PHOSPHORUS FERTILIZER NUTRIENT	POTASSIUM FERTILIZER NUTRIENT	MULCH, METHOD 1
		(ACRE)	(LB)	(LB)	(LB)	(ACRE)
100+40.0 to 105+50.0	LT	0.08	7.2	7.2	7.2	0.08
	RT	0.08	7.2	7.2	7.2	0.08
105+50.0 to 111+50.0	LT	0.09	8.1	8.1	8.1	0.09
	RT	0.09	8.1	8.1	8.1	0.09
111+50.0 to 117+50.0	LT	0.09	8.1	8.1	8.1	0.09
	RT	0.09	8.1	8.1	8.1	0.09
117+50.0 to 122+50.0	LT	0.07	6.3	6.3	6.3	0.07
	RT	0.07	6.3	6.3	6.3	0.07
122+50.0 to 127+09.0	LT	0.07	6.3	6.3	6.3	0.07
	RT	0.07	6.3	6.3	6.3	0.07
TOTALS		0.75	70	70	70	0.8

PAVEMENT SCHEDULE							
LOCATION		HOT-MIX ASPHALT SURFACE REMOVAL - BUTT JOINT	HOT-MIX ASPHALT SURFACE REMOVAL, 3"	HMA BINDER COURSE, IL-9.5, N50	POLY HMA SURFACE COURSE, IL-9.5, MIX "D", N50	BITUMINOUS MATERIALS (TACK COAT)	LONG JOINT SEALANT
		(SQ YD)	(SQ YD)	(TON)	(TON)	(POUND)	(FT)
100+40.0 to 105+50.0	LT	21.3	999.7	86	86	690	510
	RT	25.6	960.8	83	83	665	
105+50.0 to 111+50.0	LT	29.7	1218.6	105	105	845	600
	RT	-	1192.3	100	100	805	
111+50.0 to 117+50.0	LT	60.7	1325.0	116	116	935	600
	RT	-	1170.2	98	98	790	
117+50.0 to 122+50.0	LT	37.7	1067.3	93	93	745	500
	RT	-	944.4	79	79	635	
122+50.0 to 127+09.0	LT	22.6	898.2	77	77	620	459
	RT	77.3	1119.1	100	100	810	
TOTALS		275	10896	937	937	7540	2669

PAVEMENT MARKING SCHEDULE						
LOCATION	THERMOPLASTIC PAVEMENT MARKING - LINE					LETTERS & SYMBOLS
	5"	6"	12"	24"	LETTERS & SYMBOLS	
	YELLOW	WHITE	YELLOW	WHITE		
100+45.0 to 101+61.0	230	115		25	31.2	
101+61.0 to 103+91.0	920		59			
103+91.0 to 123+55.0	490					
N. 26th INTERSECTION		126		84	12	
PARK PLAZA INTERSECTION		47			11	
N. 27th INTERSECTION		70			17	
N. 28th INTERSECTION		70			17	
EMERY DRIVE INTERSECTION		45			12	
WOODLAWN ROAD INTERSECTION		512			14	
123+55.0 to 125+85.0	920		59			
125+85.0 to 127+06.0	230	115		25	31.2	
TOTALS		2790	1100	118	84	133

SIDEWALK SCHEDULE					
LOCATION		PCC SIDEWALK 4 INCH	PCC SIDEWALK 6 INCH	DETECTABLE WARNINGS	SIDEWALK REMOVAL
		(SQ FT)	(SQ FT)	(SQ FT)	(SQ FT)
100+48.0 to 101+64.0	LT	696			776
102+11.0 to 102+81.0	LT	420			420
106+44.0 to 107+15.2	LT	427.2			427
106+50.0 to 107+14.4	RT		94		94
107+27.2 to 107+84.4	LT	343.2			343
107+39.0 to 108+29.0	RT		540		540
107+96.4 to 108+28.9	LT	195			195
108+40.9 to 108+73.0	LT	193			193
108+82.6 to 109+19.0	RT		75		75
108+85.0 to 109+19.9	LT	209			209
109+29.9 to 109+69.6	LT	238			238
109+83.0 to 110+93.0	RT	660			660
109+87.6 to 110+59.3	LT	430			430
110+76.8 to 111+64.0	LT	523			523
112+15.0 to 113+10.0	LT	570			570
113+22.0 to 113+71.3	LT	296			296
113+83.3 to 115+36.0	LT	916			916
114+24.0 to 114+59.0	RT		210		210
116+39.0 to 118+29.2	LT	1210		12	1355
117+56.3 to 118+01.3	RT	270			270
118+66.3 to 118+99.0	LT	230		12	388
120+20.7 to 120+68.0	RT	284			284
120+80.0 to 121+28.2	RT	289			289
121+49.2 to 121+92.4	RT	259			259
122+03.4 to 122+54.2	RT	305			305
122+66.2 to 123+20.0	RT	323			323
122+82.0 to 123+12.0	LT	234			234
123+38.0 to 123+64.0	LT	156			156
123+57.0 to 124+07.3	RT	308		12	306
124+19.3 to 125+69.3	RT	787		12	837
125+05.0 to 125+11.1	LT	37			37
125+24.1 to 125+57.0	LT	197			197
125+91.2 to 125+97.2	LT	36			36
126+01.0 to 126+23.0	RT	134		12	132
126+15.2 to 126+20.2	LT	30			30
TOTALS		11206	919	60	12554

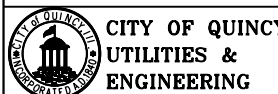
CURB AND GUTTER SCHEDULE			
LOCATION		COMB CONC CURB & GUTTER, TY B-6.12	CONCRETE CURB REPAIR
		(FT)	(FT)
100+54.5 to 101+24.0	LT		69.5
101+43.0 to 101+70.0	LT		27
102+07.0 to 102+76.0	LT		69
103+06.0 to 105+76.0	LT		270
106+07.0 to 106+76.0	RT		69
107+10.0 to 108+88.0	RT		178
109+21.0 to 109+42.0	RT		21
112+25.0 to 115+27.0	RT		302
116+24.8 to 118+13.6	LT		189
118+79.6 to 119+62.5	LT		83
119+77.2 to 120+85.1	LT		108
121+03.3 to 121+31.4	LT		28
121+50.2 to 122+55.2	LT		105
122+72.1 to 123+09.0	LT		37
123+27.1 to 123+82.5	LT		55
123+75.1 to 125+47.3	RT		172
124+04.9 to 124+44.9	LT		40
124+67.5 to 125+06.1	LT		39
125+29.1 to 125+34.1	LT		5
125+45.0 to 125+92.2	LT		47
126+20.2 to 127+05.9	LT		86
NW CORNER - 28TH & MAINE		35	35
NE CORNER - 28TH & MAINE		33	33
SE CORNER - EMERY DR. & MAINE		36	36
SW CORNER - WOODLAWN & MAINE		36	36
SE CORNER - WOODLAWN & MAINE		18	18
TOTALS		158	1999

UTILITY ADJUSTMENT SCHEDULE			
LOCATION		MH TO BE ADJ W/ NEW TY 1 FR, CLSD LID	VALVE BOXES TO BE ADJUSTED
		(EACH)	(EACH)
101+21.2	4.8' LT	1	
101+27.0	14.1' LT		1
102+51.0	8.5' LT	1	
103+79.5	8.9' LT	1	
105+62.1	14.4' RT		1
106+03.5	13.0' LT		1
106+07.2	32.6' LT		1
106+08.7	40.5' LT		1
106+16.7	0.2' LT	1	
108+43.7	0.2' LT	1	
108+57.0	8.2' LT		1
110+79.1	7.5' LT		1
111+01.5	0.2' LT	1	
111+82.2	14.9' LT		1
111+96.2	33.9' LT		1
112+30.4	4.9' LT	1	
115+55.5	14.6' RT		1
115+79.2	41.5' LT		1
115+89.1	5.3' LT	1	
115+95.1	13.0' LT		1
115+96.9	12.7' RT		1
116+23.9	16.1' RT		1
118+52.7	5.6' LT	1	
122+52.5	5.6' LT	1	
123+22.9	14.5' RT		1
123+24.1	13.1' LT		1
125+03.2	15.7' LT		1
126+00.7	5.8' LT	1	
126+18.3	4.9' LT	1	
126+90.0	6.0' LT	1	
TOTALS		13	17

ENTRANCE SCHEDULE					
LOCATION		PCC DRIVEWAY PAVEMENT		AGGREGATE BASE COURSE, TYPE A 4"	DRIVEWAY PAVEMENT REMOVAL
		6"	8"	(SQ YD)	(SQ YD)
		(SQ YD)	(SQ YD)		
102+91.0	LT		51.2	51.2	48.2
107+90.4	LT	24.8		24.8	24.8
108+79.0	LT	21.5		21.5	21.2
108+99.2	RT		63.3	63.3	62.5
109+24.9	LT	18.8		18.8	18.8
109+78.6	LT	33.1		33.1	33.1
113+16.0	LT	8.0		8.0	8.0
113+77.3	LT	23.0		23.0	23.0
118+09.3	RT	8.0		8.0	8.0
120+14.7	RT	8.0		8.0	8.0
120+74.0	RT	8.0		8.0	8.0
122+60.2	RT	8.0		8.0	8.0
123+98.5	LT	24.4		24.4	19.4
124+13.3	RT	29.8		29.8	21.8
124+51.3	LT	24.4		24.4	19.4
125+17.6	LT	33.7		33.7	27.6
126+06.2	LT	45.2		45.2	41.0
106+93.4	RT		62.8	62.8	54.2
107+21.2	LT	24.2		24.2	24.2
108+34.9	LT	21.8		21.8	21.5
TOTALS		365	177	542	501

PATCHING SCHEDULE		
LOCATION	PAVEMENT PATCHING, 8"	
	TY II	TY III
	(SQ YD)	(SQ YD)
100+60	LT	5.6
109+06	LT & RT	20.0
112+89	LT & RT	20.0
115+00	LT & RT	20.0
116+22	LT & RT	18.7
117+28	LT & RT	20.0
117+63	LT & RT	20.0
120+25	LT & RT	20.0
123+05	LT & RT	20.0
124+47	LT & RT	24.0
124+81	LT & RT	24.0
TOTALS		6

MODEL Dwg: UTILITY UTILITIES & ENGINEERING
 FILE NAME: PROJECT FILES\MFT229_Maine St. 24th to 30th\CADD DRAWINGS\006_Schedule_MFT229.dwg



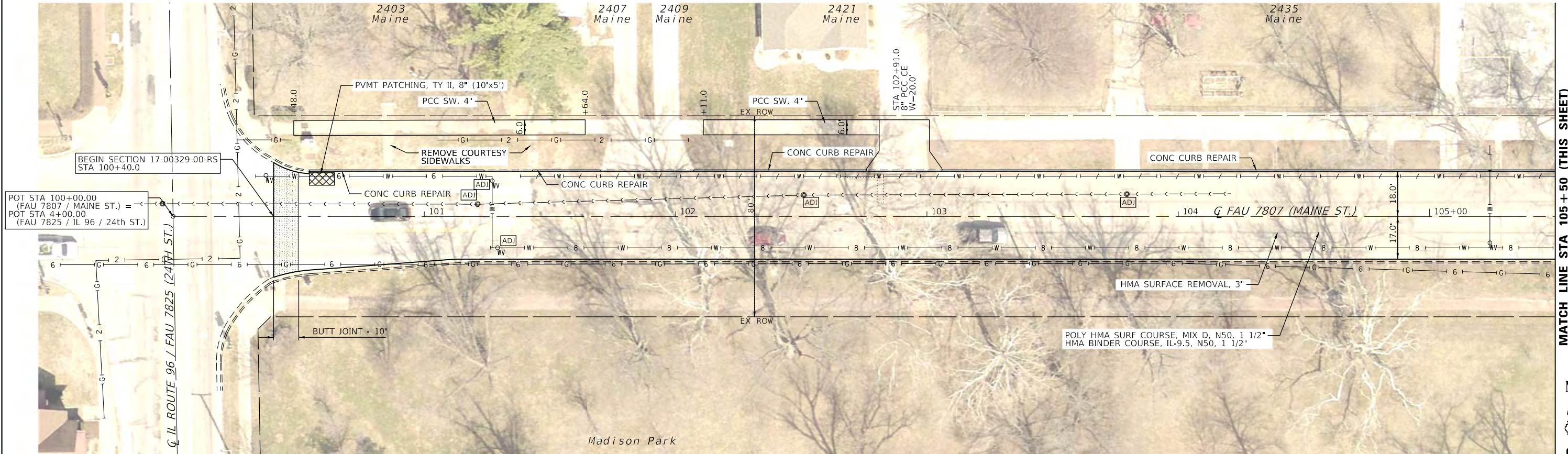
USER NAME = sbange	DESIGNED -	REVISED -
PLOT SCALE = 40.0000 ' / in.	DRAWN -	REVISED -
PLOT DATE = 11/10/2020	CHECKED -	REVISED -
	DATE -	REVISED -

CITY OF QUINCY, ILLINOIS

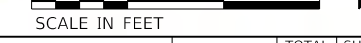
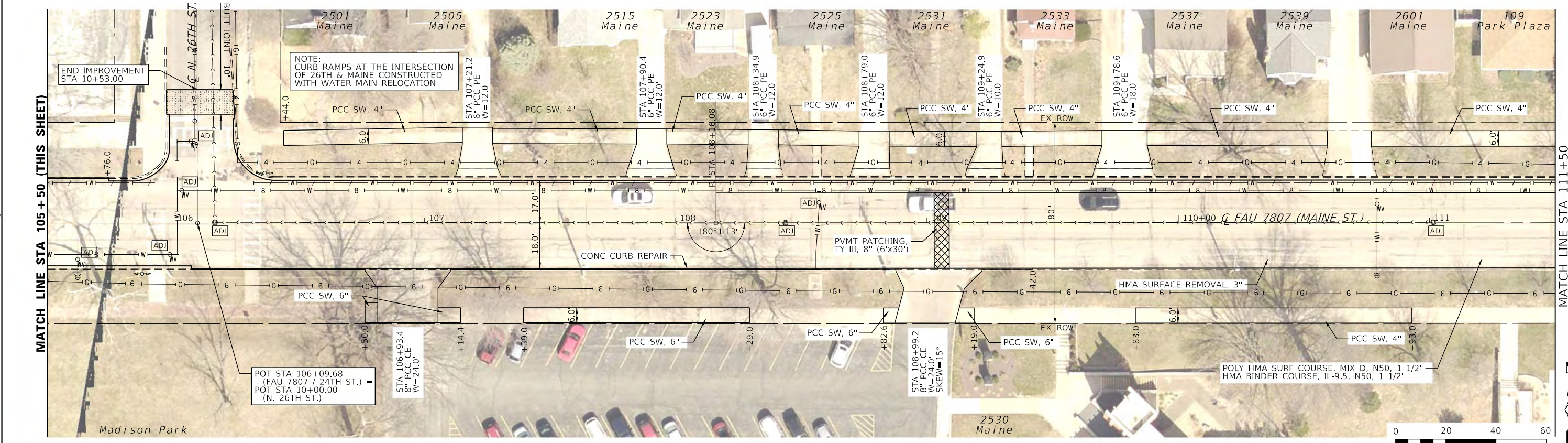
SCHEDULE OF QUANTITIES

SCALE: SHEET 1 OF 1 SHEETS STA. TO STA.

F.A.U. RTE.	SECTION	COUNTY	TOTAL SHEETS	SHEET NO.
7807	17-00329-00-R5	ADAMS	15	6
CONTRACT NO. 93758				
ILLINOIS FED. AID PROJECT				

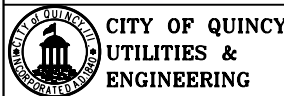


MATCH LINE STA 105+50 (THIS SHEET)



MATCH LINE STA 111+50

MODEL: Dwg.mxd
FILE NAME: E:\PROJECT FILES\MET229 - Main St. 24th to 30th\CADD_DRAWINGS\007_P01_MIT229.dwg



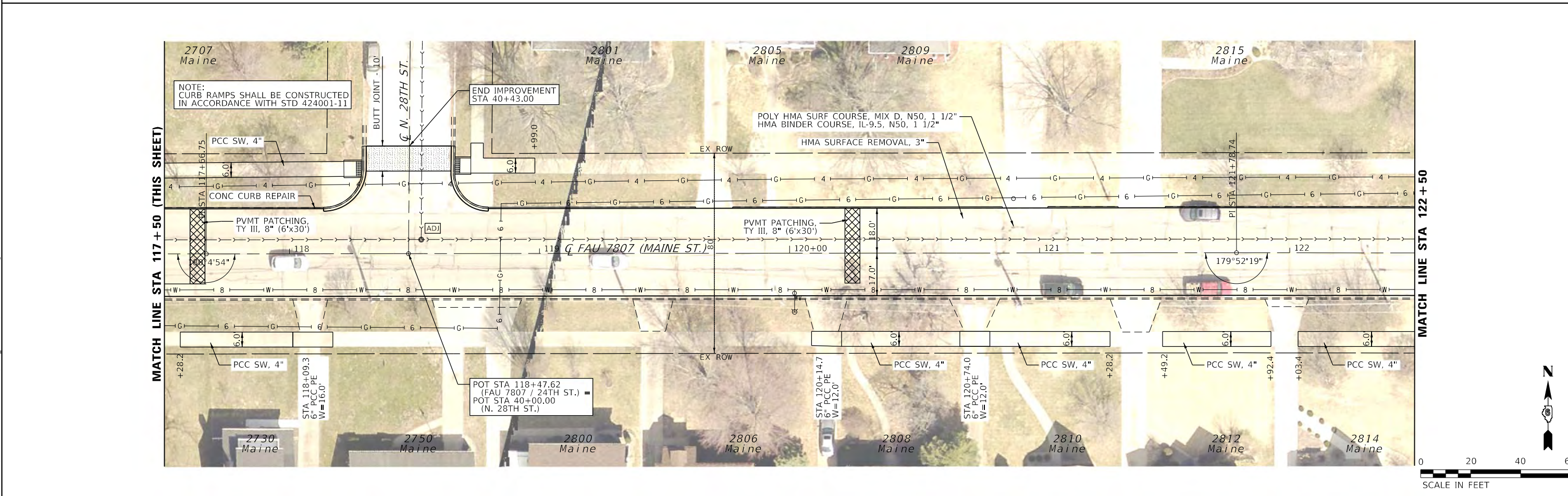
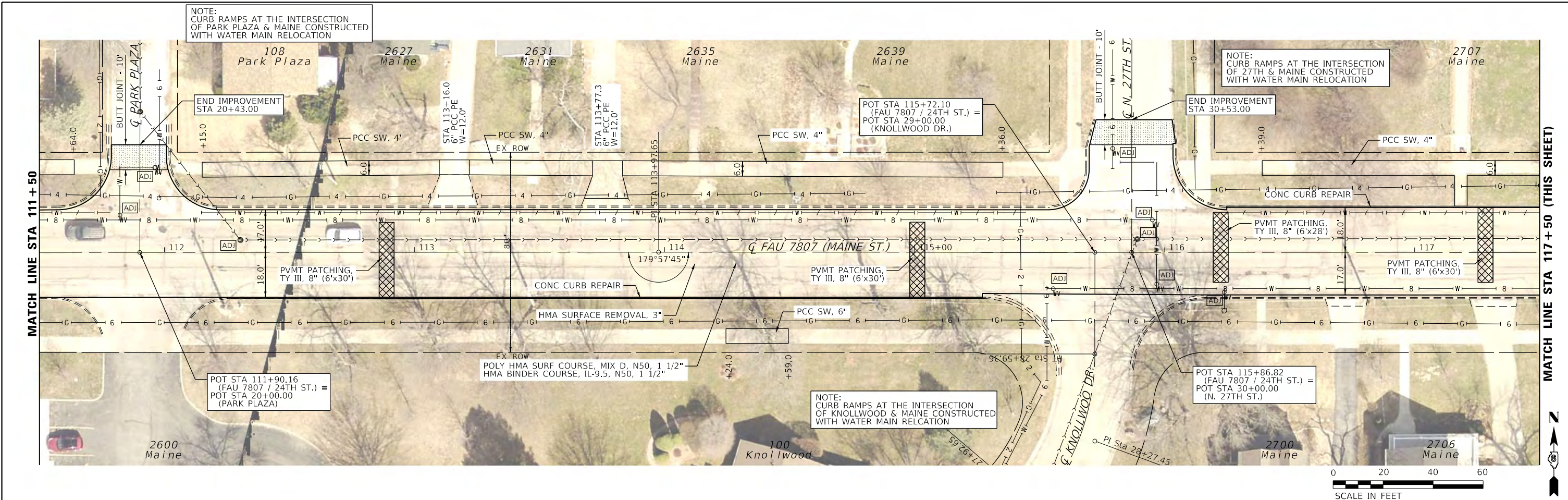
USER NAME = sbange	DESIGNED -	REVISED -
PLOT SCALE = 40.0000' / in.	DRAWN -	REVISED -
PLOT DATE = 11/10/2020	CHECKED -	REVISED -
	DATE -	REVISED -

CITY OF QUINCY, ILLINOIS

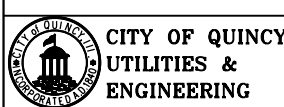
**FAU 7807 (MAINE STREET)
PLAN**

SCALE: 1"=20' SHEET 1 OF 3 SHEETS STA. 100+00 TO STA. 111+50

F.A.U. RTE.	SECTION	COUNTY	TOTAL SHEETS	SHEET NO.
7807	17-00329-00-RS	ADAMS	15	7
CONTRACT NO. 93758				
ILLINOIS FED. AID PROJECT				



MODEL Dwg: 11
 FILE NAME: E:\PROJECT FILES\MFT229 - Maine St. 24th to 30th\CADD_DRAWINGS\008_P02_MFT229.dwg

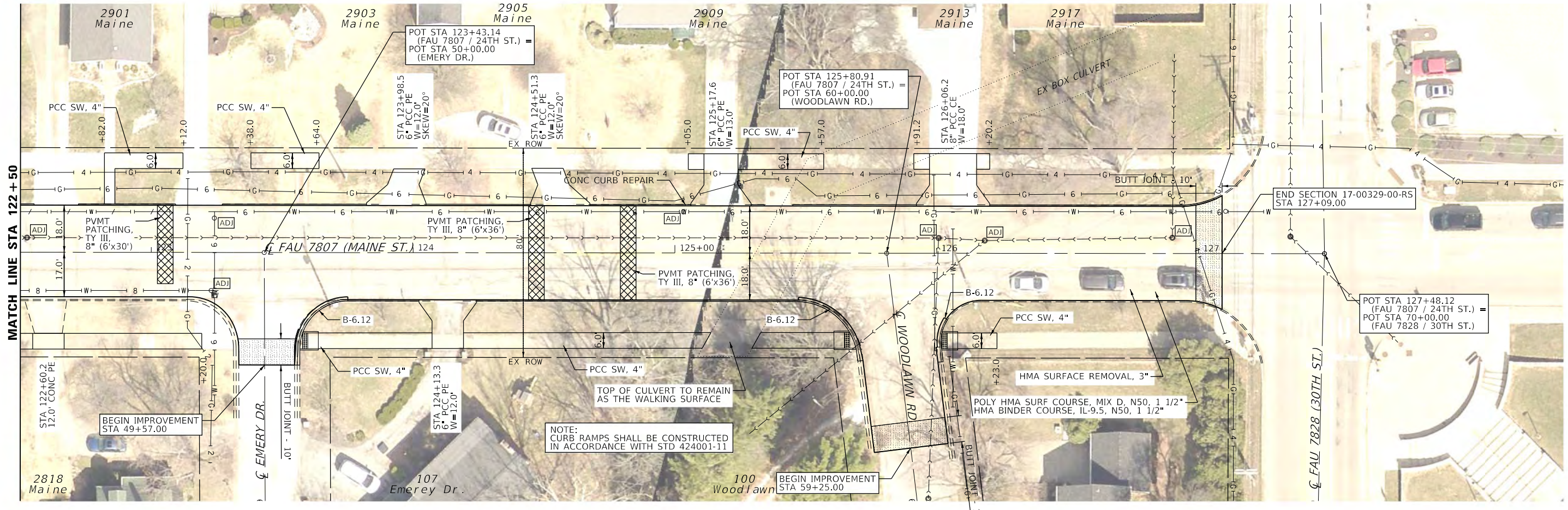


USER NAME = sbange	DESIGNED -	REVISED -
PLOT SCALE = 40.0000' / in.	DRAWN -	REVISED -
PLOT DATE = 11/10/2020	CHECKED -	REVISED -
	DATE -	REVISED -

CITY OF QUINCY, ILLINOIS

FAU 7807 (MAINE STREET) PLAN		F.A.U. RTE.	SECTION	COUNTY	TOTAL SHEETS	SHEET NO.
		7807	17-00329-00-RS	ADAMS	15	8
SCALE: 1"=20'		SHEET 2 OF 3 SHEETS		STA. 111+50 TO STA. 122+50		CONTRACT NO. 93758

ILLINOIS	FED. AID PROJECT
----------	------------------

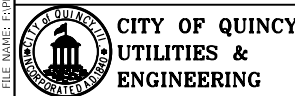


NOTE:
CURB RAMP AT THE SOUTHWEST CORNER
OF EMERY DR. & MAINE ST. CONSTRUCTED
WITH WATER MAIN RELOCATION

NOTE:
CURB RAMP SHALL BE CONSTRUCTED
IN ACCORDANCE WITH STD 424001-11

POLY HMA SURF COURSE, MIX D, N50, 1 1/2"
HMA BINDER COURSE, IL-9.5, N50, 1 1/2"

MODEL: D:\quincy\PROJECT FILES\MET229 - MAINE ST. 24TH TO 30TH\CADD_DRAWINGS\009 - PROJ - MET229.dgn
 FILE NAME: E:\PROJECT FILES\MET229 - MAINE ST. 24TH TO 30TH\CADD_DRAWINGS\009 - PROJ - MET229.dgn



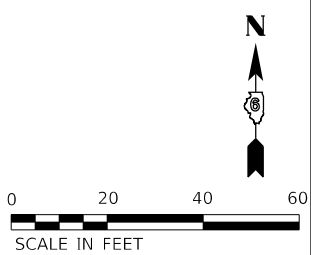
USER NAME = sbange	DESIGNED -	REVISED -
PLOT SCALE = 40.0000' / in.	DRAWN -	REVISED -
PLOT DATE = 11/10/2020	CHECKED -	REVISED -
	DATE -	REVISED -

CITY OF QUINCY, ILLINOIS

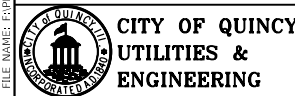
**FAU 7807 (MAINE STREET)
PLAN**

SCALE: 1"=20' SHEET 3 OF 3 SHEETS STA. 122+50 TO STA. 127+50

F.A.U. RTE.	SECTION	COUNTY	TOTAL SHEETS	SHEET NO.
7807	17-00329-00-RS	ADAMS	15	9
CONTRACT NO. 93758				
ILLINOIS FED. AID PROJECT				



MODEL Dwg: UTILITY
 FILE NAME: E:\PROJECT FILES\MFT29 MAIN ST. 24TH TO 30TH\CADD DRAWINGS\010 MARKING\01 MFT29.dwg



CITY OF QUINCY
 UTILITIES &
 ENGINEERING

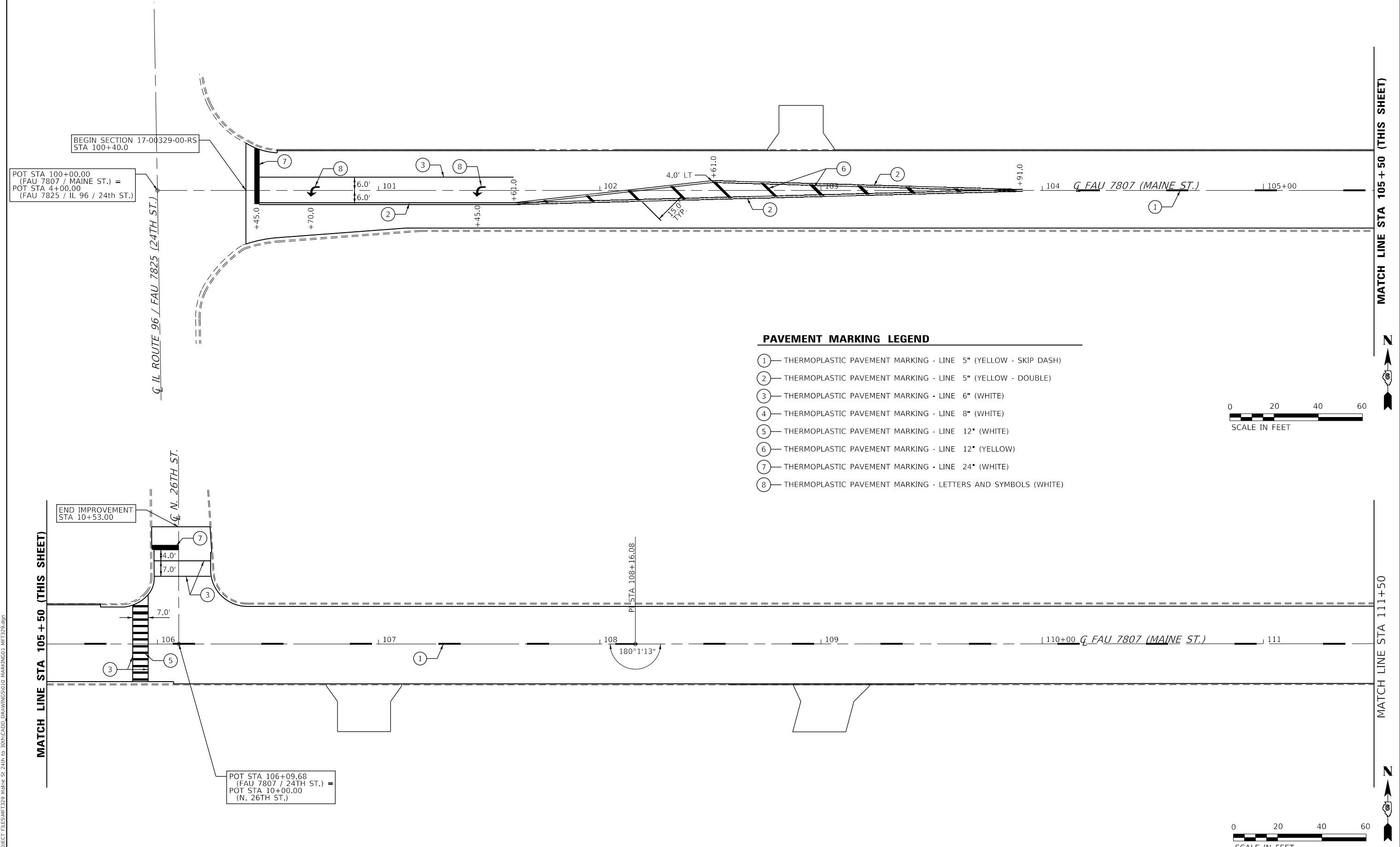
USER NAME = sbange	DESIGNED -	REVISED -
PLOT SCALE = 40.0000 ' / in.	DRAWN -	REVISED -
PLOT DATE = 11/10/2020	CHECKED -	REVISED -
	DATE -	REVISED -

CITY OF QUINCY, ILLINOIS

**FAU 7807 (MAINE STREET)
 PAVEMENT MARKING PLAN**

SCALE: 1"=20' SHEET 1 OF 3 SHEETS STA. 100+00 TO STA. 111+50

F.A.U. RTE.	SECTION	COUNTY	TOTAL SHEETS	SHEET NO.
7807	17-00329-00-RS	ADAMS	15	10
CONTRACT NO. 93758				
ILLINOIS FED. AID PROJECT				



PAVEMENT MARKING LEGEND

- ①— THERMOPLASTIC PAVEMENT MARKING - LINE 5" (YELLOW - SKIP DASH)
- ②— THERMOPLASTIC PAVEMENT MARKING - LINE 5" (YELLOW - DOUBLE)
- ③— THERMOPLASTIC PAVEMENT MARKING - LINE 6" (WHITE)
- ④— THERMOPLASTIC PAVEMENT MARKING - LINE 8" (WHITE)
- ⑤— THERMOPLASTIC PAVEMENT MARKING - LINE 12" (WHITE)
- ⑥— THERMOPLASTIC PAVEMENT MARKING - LINE 12" (YELLOW)
- ⑦— THERMOPLASTIC PAVEMENT MARKING - LINE 24" (WHITE)
- ⑧— THERMOPLASTIC PAVEMENT MARKING - LETTERS AND SYMBOLS (WHITE)

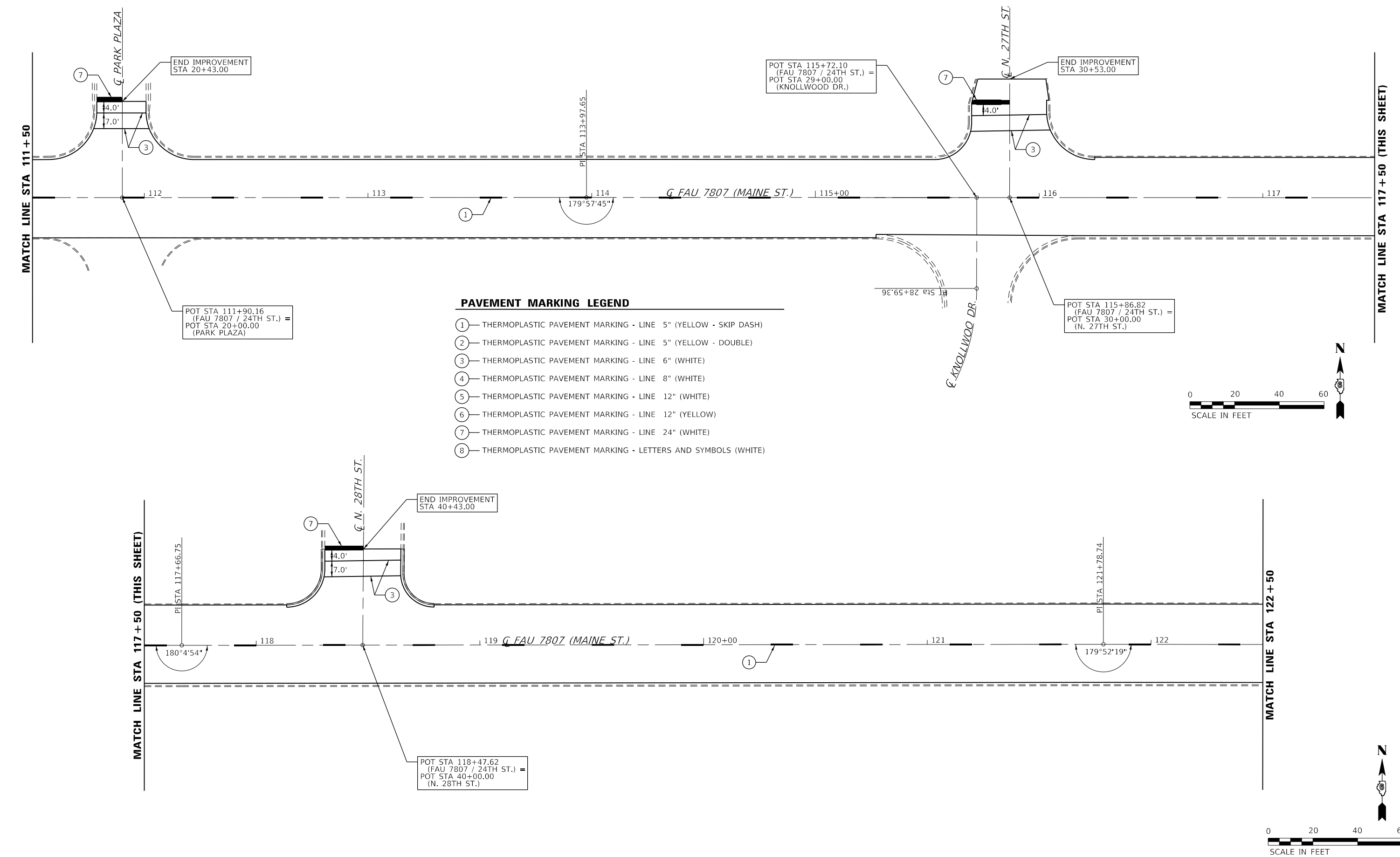


MATCH LINE STA 105 + 50 (THIS SHEET)

MATCH LINE STA 111+50

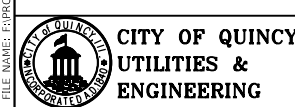
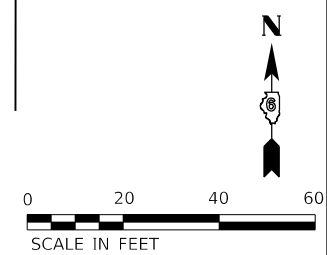
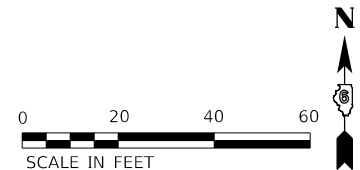


MODEL Dwg: 11
 FILE NAME: E:\PROJECT FILES\MFT229 MAIN ST. 24TH TO 30TH\CADD_DRAWINGS\011 MARKING\02_MFT229.dgn



PAVEMENT MARKING LEGEND

- ① — THERMOPLASTIC PAVEMENT MARKING - LINE 5" (YELLOW - SKIP DASH)
- ② — THERMOPLASTIC PAVEMENT MARKING - LINE 5" (YELLOW - DOUBLE)
- ③ — THERMOPLASTIC PAVEMENT MARKING - LINE 6" (WHITE)
- ④ — THERMOPLASTIC PAVEMENT MARKING - LINE 8" (WHITE)
- ⑤ — THERMOPLASTIC PAVEMENT MARKING - LINE 12" (WHITE)
- ⑥ — THERMOPLASTIC PAVEMENT MARKING - LINE 12" (YELLOW)
- ⑦ — THERMOPLASTIC PAVEMENT MARKING - LINE 24" (WHITE)
- ⑧ — THERMOPLASTIC PAVEMENT MARKING - LETTERS AND SYMBOLS (WHITE)



USER NAME = sbange	DESIGNED -	REVISED -
PLOT SCALE = 40.0000' / in.	DRAWN -	REVISED -
PLOT DATE = 11/10/2020	CHECKED -	REVISED -
	DATE -	REVISED -

CITY OF QUINCY, ILLINOIS

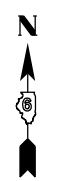
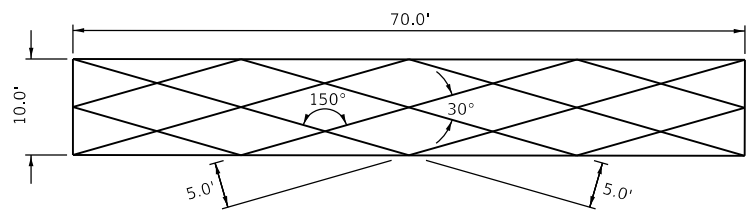
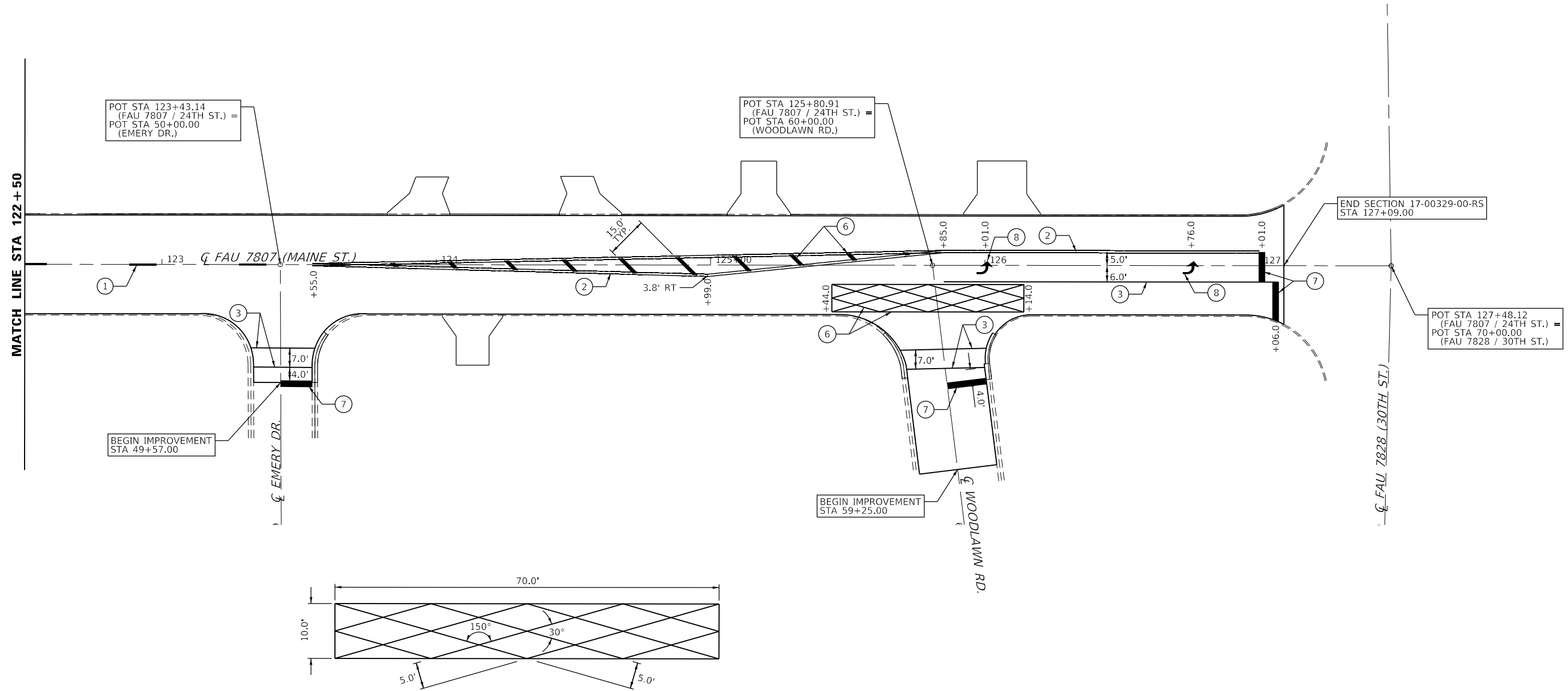
**FAU 7807 (MAINE STREET)
 PAVEMENT MARKING PLAN**

SCALE: 1"=20' SHEET 2 OF 3 SHEETS STA. 111+50 TO STA. 122+50

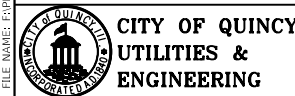
F.A.U. RTE.	SECTION	COUNTY	TOTAL SHEETS	SHEET NO.
7807	17-00329-00-RS	ADAMS	15	11
CONTRACT NO. 93758				
ILLINOIS FED. AID PROJECT				

PAVEMENT MARKING LEGEND

- ① — THERMOPLASTIC PAVEMENT MARKING - LINE 5" (YELLOW - SKIP DASH)
- ② — THERMOPLASTIC PAVEMENT MARKING - LINE 5" (YELLOW - DOUBLE)
- ③ — THERMOPLASTIC PAVEMENT MARKING - LINE 6" (WHITE)
- ④ — THERMOPLASTIC PAVEMENT MARKING - LINE 8" (WHITE)
- ⑤ — THERMOPLASTIC PAVEMENT MARKING - LINE 12" (WHITE)
- ⑥ — THERMOPLASTIC PAVEMENT MARKING - LINE 12" (YELLOW)
- ⑦ — THERMOPLASTIC PAVEMENT MARKING - LINE 24" (WHITE)
- ⑧ — THERMOPLASTIC PAVEMENT MARKING - LETTERS AND SYMBOLS (WHITE)



MODEL Dwg: 17-00329-00-RS-017 MARKING03 MFT229.dgn
 FILE NAME: E:\PROJECT FILES\MFT229 Main St. 24th to 30th\CADD DRAWINGS\017 MARKING03 MFT229.dgn



USER NAME = sbange	DESIGNED -	REVISED -
PLOT SCALE = 40.0000' / in.	DRAWN -	REVISED -
PLOT DATE = 11/10/2020	CHECKED -	REVISED -
	DATE -	REVISED -

CITY OF QUINCY, ILLINOIS

**FAU 7807 (MAINE STREET)
PAVEMENT MARKING PLAN**

SCALE: 1"=20' SHEET 3 OF 3 SHEETS STA. 122+50 TO STA. 127+50

F.A.U. RTE.	SECTION	COUNTY	TOTAL SHEETS	SHEET NO.
7807	17-00329-00-RS	ADAMS	15	12
CONTRACT NO. 93758				
ILLINOIS FED. AID PROJECT				

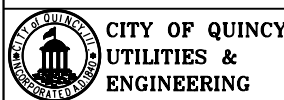


DETECTOR LOOP SCHEDULE					
DESIGNATION	LOCATION	SIZE	TYPE	TURNS	DETECTOR LOOP, TYPE I
					(FT)
EAC	WESTBOUND THRU / RT	6' x 6'	POINT	5	42
EAE	WESTBOUND THRU / RT	12' x 2'	POINT	4	37
EAF	WESTBOUND THRU / RT	12' x 2'	POINT	4	47
ELT	WESTBOUND LT	35' x 6'	QUAD	2-4-2	145
ELB	WESTBOUND LT	48' x 6'	PRESENCE	2	141
SAE	NORTHBOUND THRU / RT	6' x 6'	POINT	4	32
SAF	NORTHBOUND THRU / RT	6' x 6'	POINT	5	57
WAC	EASTBOUND THRU / RT	6' x 6'	POINT	4	33
WLB	EASTBOUND LT	50' x 6'	PRESENCE	2	140
TOTALS					674

NOTES:
 DETECTOR LOOPS IN THE NORTHBOUND AND EASTBOUND LANES ARE FOR THE REPLACEMENT OF EXISTING FAILED LOOPS.
 TRAFFIC CONTROL AND PROTECTION DURING THE INSTALLATION OF THE DETECTOR LOOPS SHALL BE IN ACCORDANCE WITH HIGHWAY STANDARD 701701.



MODEL: D:\p\it...
 FILE NAME: E:\PROJECT FILES\MET229 - MAINE ST. 24th to 30th\CADD_DRAWINGS\013_SIGNALS_MET229.dgn



USER NAME = sbange	DESIGNED -	REVISED -
PLOT SCALE = 40.0000 ' / in.	DRAWN -	REVISED -
PLOT DATE = 11/10/2020	CHECKED -	REVISED -
	DATE -	REVISED -

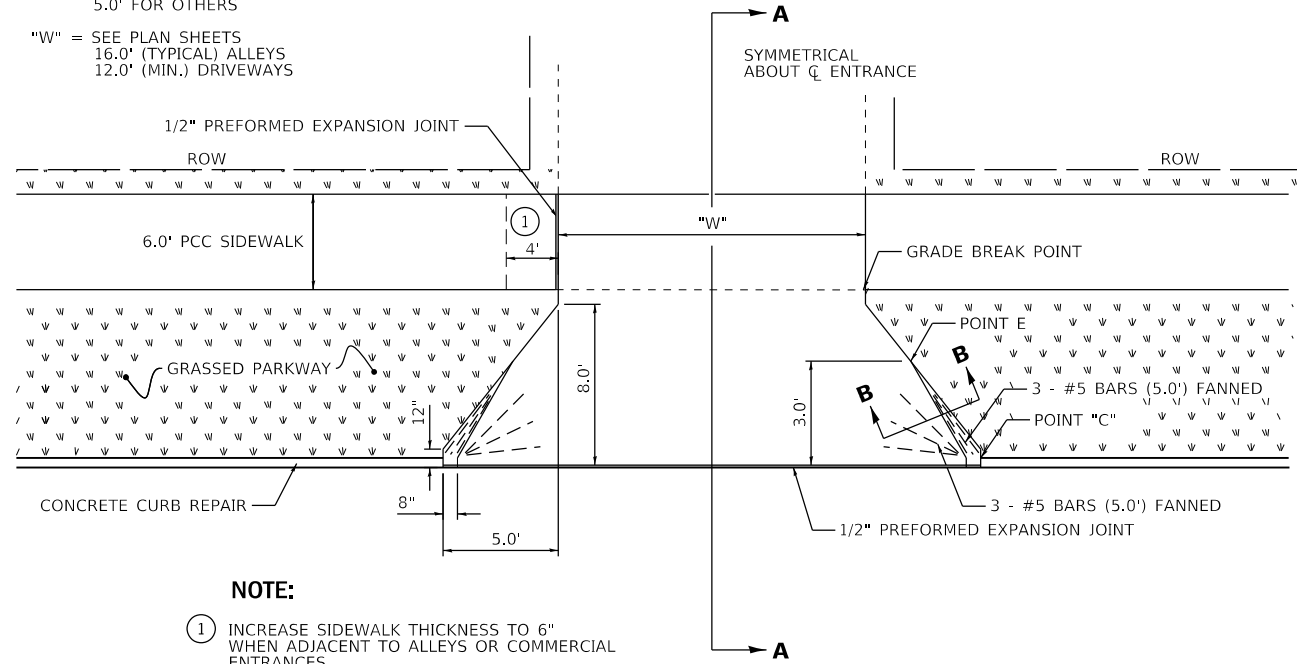
CITY OF QUINCY, ILLINOIS

**FAU 7807 (MAINE STREET)
 TRAFFIC SIGNAL DETECTOR LOOP REPLACEMENT /REPAIR**

SCALE: 1"=20' SHEET 1 OF 1 SHEETS STA. TO STA.

F.A.U. RTE.	SECTION	COUNTY	TOTAL SHEETS	SHEET NO.
7807	17-00329-00-RS	ADAMS	15	13
CONTRACT NO. 93758				
ILLINOIS FED. AID PROJECT				

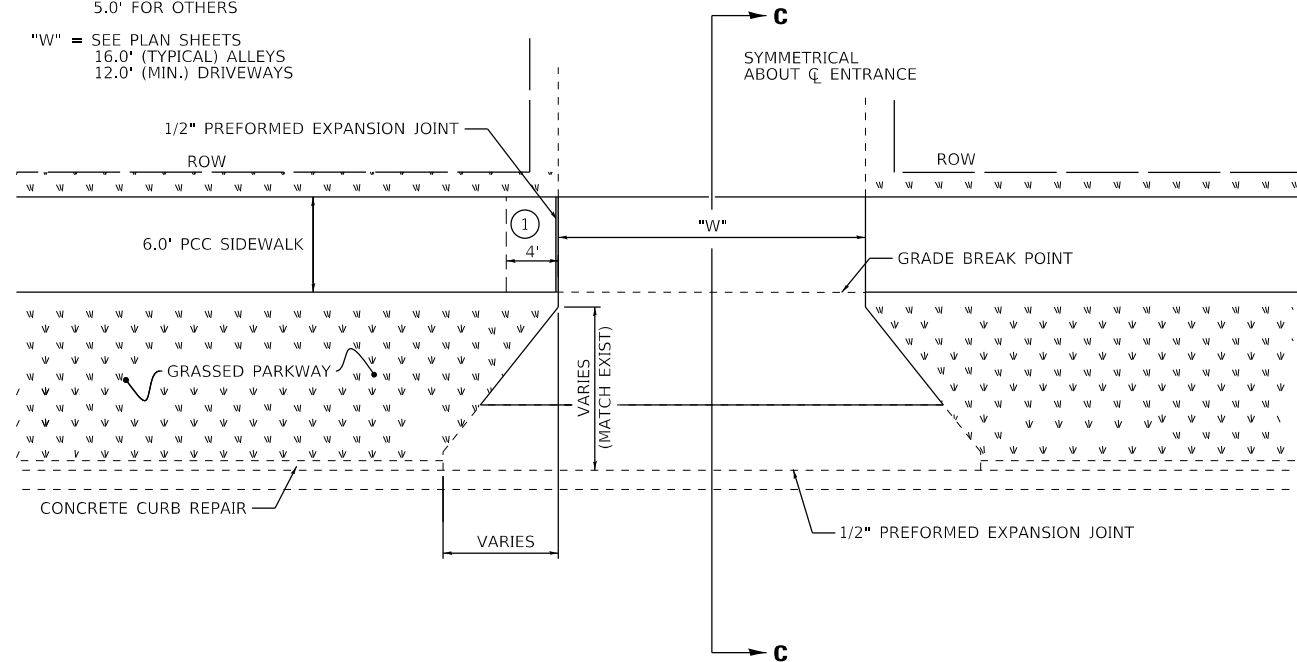
"A" = 6.0' FOR ALLEYS
5.0' FOR OTHERS
"W" = SEE PLAN SHEETS
16.0' (TYPICAL) ALLEYS
12.0' (MIN.) DRIVEWAYS



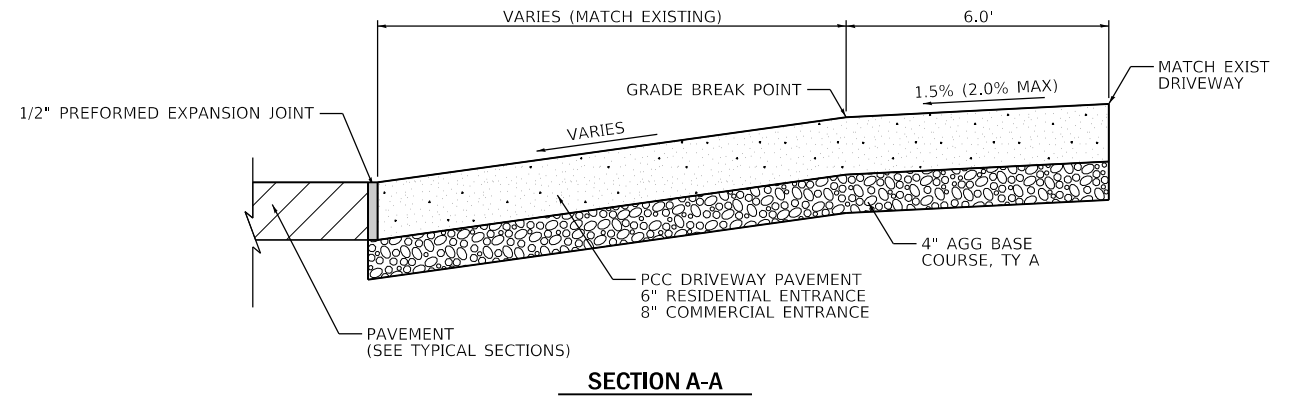
NOTE:
① INCREASE SIDEWALK THICKNESS TO 6\"/>

TYPICAL ENTRANCE @ CONCRETE CURB REPAIR

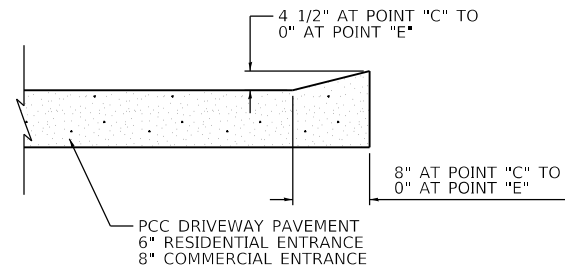
"A" = 6.0' FOR ALLEYS
5.0' FOR OTHERS
"W" = SEE PLAN SHEETS
16.0' (TYPICAL) ALLEYS
12.0' (MIN.) DRIVEWAYS



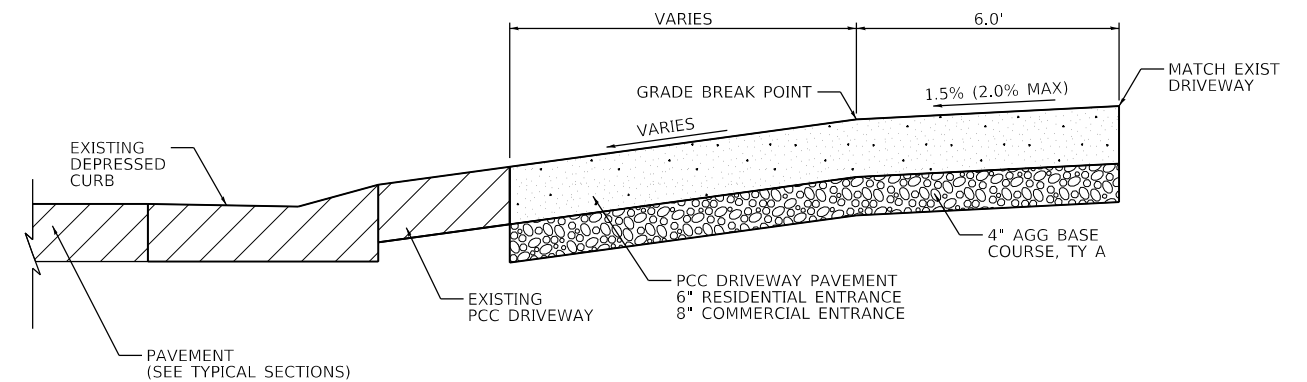
TYPICAL ENTRANCE @ NEW B-6.12



SECTION A-A



SECTION B-B

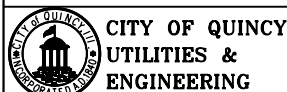


SECTION C-C

GENERAL NOTES

1. CLASS PV CONCRETE SHALL BE USED THROUGH-OUT.
2. THE INSTALLATION OF 1/2" PREFORMED EXPANSION JOINTS AND REBAR SHALL BE INCLUDED IN THE UNIT PRICE BID FOR P.C.C. DRIVEWAY PAVEMENT.
3. THE UNIT PRICE BID FOR THIS ITEM SHALL INCLUDE THE FURNISHING OF ALL LABOR AND MATERIALS NECESSARY TO CONSTRUCT THE P.C.C. DRIVEWAY PAVEMENT.
4. DRIVEWAY MAY REQUIRE A SLOPE CHANGE AT DETERMINED DISTANCES BEHIND CURB FOR SIDEWALK OR DRAINAGE CORRECTIONS DUE TO EXCESSIVE OR INADEQUATE SLOPE OF STRAIGHT LINE GRADE.
5. COST OF CONSTRUCTING A SLOPE CHANGE IF NECESSARY AND ALL JOINTING SHALL BE INCIDENTAL TO THE COST PER SQUARE YARD OF P.C.C. DRIVEWAY PAVEMENT.
6. REFER TO PLAN AND PROFILE SHEETS FOR DRIVEWAY WIDTHS OR MATCH EXISTING.
7. SAW OR SCRATCH JOINTS IN EACH ENTRANCE SO THAT NO SECTION REMAINS LARGER THAN 12 FEET IN ANY DIMENSION.
8. MAXIMUM WIDTH OF A DRIVEWAY OR ALLEY ENTRANCE AT THE RIGHT-OF-WAY LINE SHALL BE THIRTY (30) FEET UNLESS OTHERWISE NOTED.
9. CROSS SLOPE OF THE SIDEWALK ROUTE SHALL BE BETWEEN 1.0% AND 2.0%.
10. ALL SAWED JOINTS SHALL REQUIRE TO BE SEALED WITH A POLYSULFIDE OR POLYURETHANE JOINT SEALANT.

MODEL Dwg: 11
 FILE NAME: E:\PROJECT FILES\MFT229 - Main St. 24th to 30th\CADD DRAWINGS\014 Detail - MFT229.dwg
 DATE: 11/10/2020



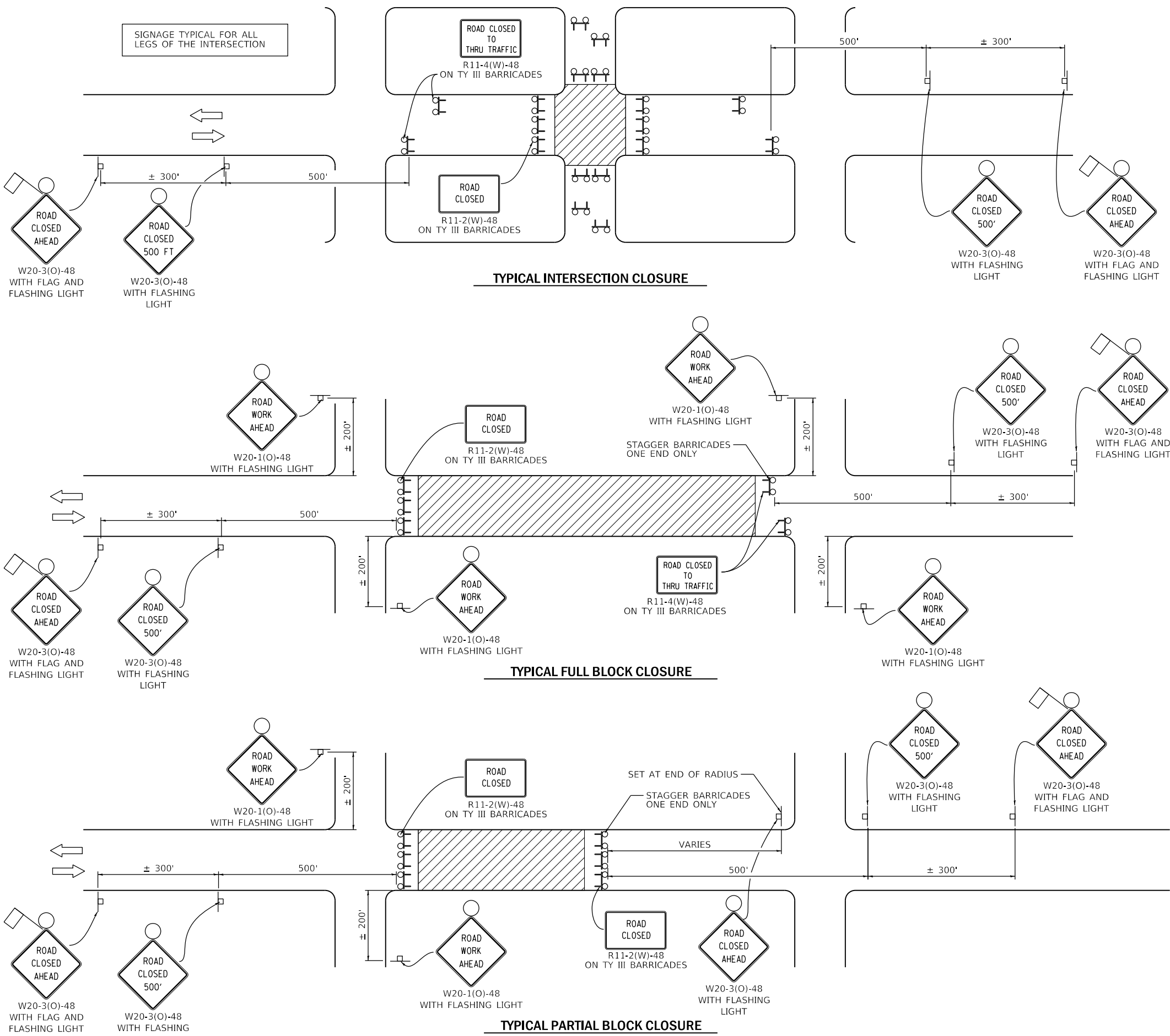
USER NAME = sbange	10/17/2020	DESIGNED -	REVISIONS
PLOT SCALE = 40.0000' / in.		DRAWN -	REVISIONS -
PLOT DATE = 11/10/2020		CHECKED -	REVISIONS -
		DATE -	REVISIONS -

CITY OF QUINCY, ILLINOIS

**MISCELLANEOUS DETAILS -
ENTRANCE DETAILS**

SCALE: SHEET OF SHEETS STA. TO STA.

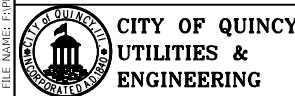
F.A.U. RTE.	SECTION	COUNTY	TOTAL SHEETS	SHEET NO.
7807	17-00329-00-R5	ADAMS	15	14
CONTRACT NO. 93758				
ILLINOIS FED. AID PROJECT				



- LEGEND**
- WORK AREA
 - TYPE III BARRICADE WITH FLASHING LIGHTS
 - SIGN ON PORTABLE OR POST MOUNTED SUPPORT

- GENERAL NOTES**
1. CLOSURES CAN BE COMBINED AS NEEDED TO MEET THE LIMITS OF THE WORK ZONE.
 2. THE EXACT NUMBER OF TYPE III BARRICADES REQUIRED TO BE DETERMINED IN THE FILED BY THE ENGINEER.
 3. SIGNS SHALL BE POST MOUNTED IF THE CLOSURE IS GREATER THAN FOUR (4) CALENDAR DAYS.
 4. DIMENSIONS MAY BE VARIED DUE TO SITE CONDITIONS, TOPOGRAPHY, AND URBAN LANDSCAPE.
 5. ORANGE FLAG - MINIMUM 18" BY 18"
 6. FOR CLOSURES ON ONE-WAY STREETS, PLACE WARNING SIGNS ON APPROACH SIDE ONLY.
 7. ENGINEER TO DETERMINE WHICH APPROACH TO STAGGER THE TYPE III BARRICADES.
 8. TRAFFIC CONTROL AND PROTECTION IN THIS DETAIL TO BE MEASURED ON AN EACH BASIS. WORK ZONES MUST BE SPACED GREATER THAN 800' APART FOR THE TRAFFIC CONTROL AND PROTECTION TO BE MEASURED FOR SEPARATELY.

MODEL: D:\cadd\PROJECT FILES\MFT229 Main\St. 24th to 30th\CADD DRAWINGS\014 Detail\MFT229.dwg
 FILE NAME: C:\PROJECT FILES\MFT229 Main\St. 24th to 30th\CADD DRAWINGS\014 Detail\MFT229.dwg



USER NAME = sbange	DESIGNED -	REVISED -
PLOT SCALE = 40,0000 ' / in.	DRAWN -	REVISED -
PLOT DATE = 11/10/2020	CHECKED -	REVISED -
	DATE -	REVISED -

CITY OF QUINCY, ILLINOIS

MISCELLANEOUS DETAILS - TRAFFIC CONTROL & PROTECTION STREET CLOSURE

SCALE:	SHEET	OF	SHEETS	STA.	TO	STA.
--------	-------	----	--------	------	----	------

F.A.U. RTE.	SECTION	COUNTY	TOTAL SHEETS	SHEET NO.
7807	17-00329-00-R5	ADAMS	15	15
CONTRACT NO. 93758				
ILLINOIS FED. AID PROJECT				