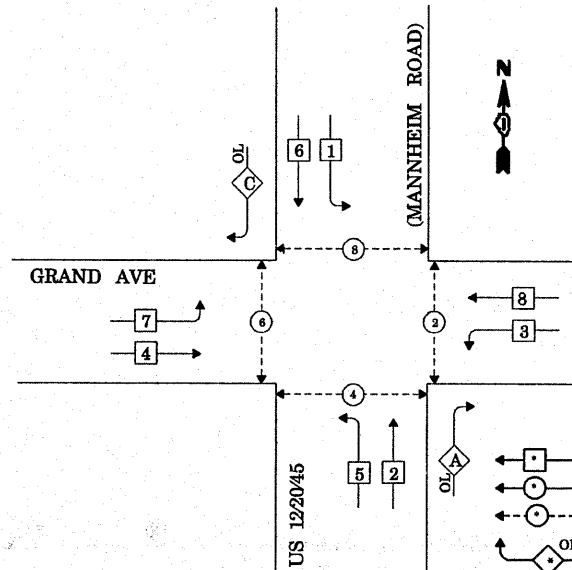


CONTROLLER SEQUENCE

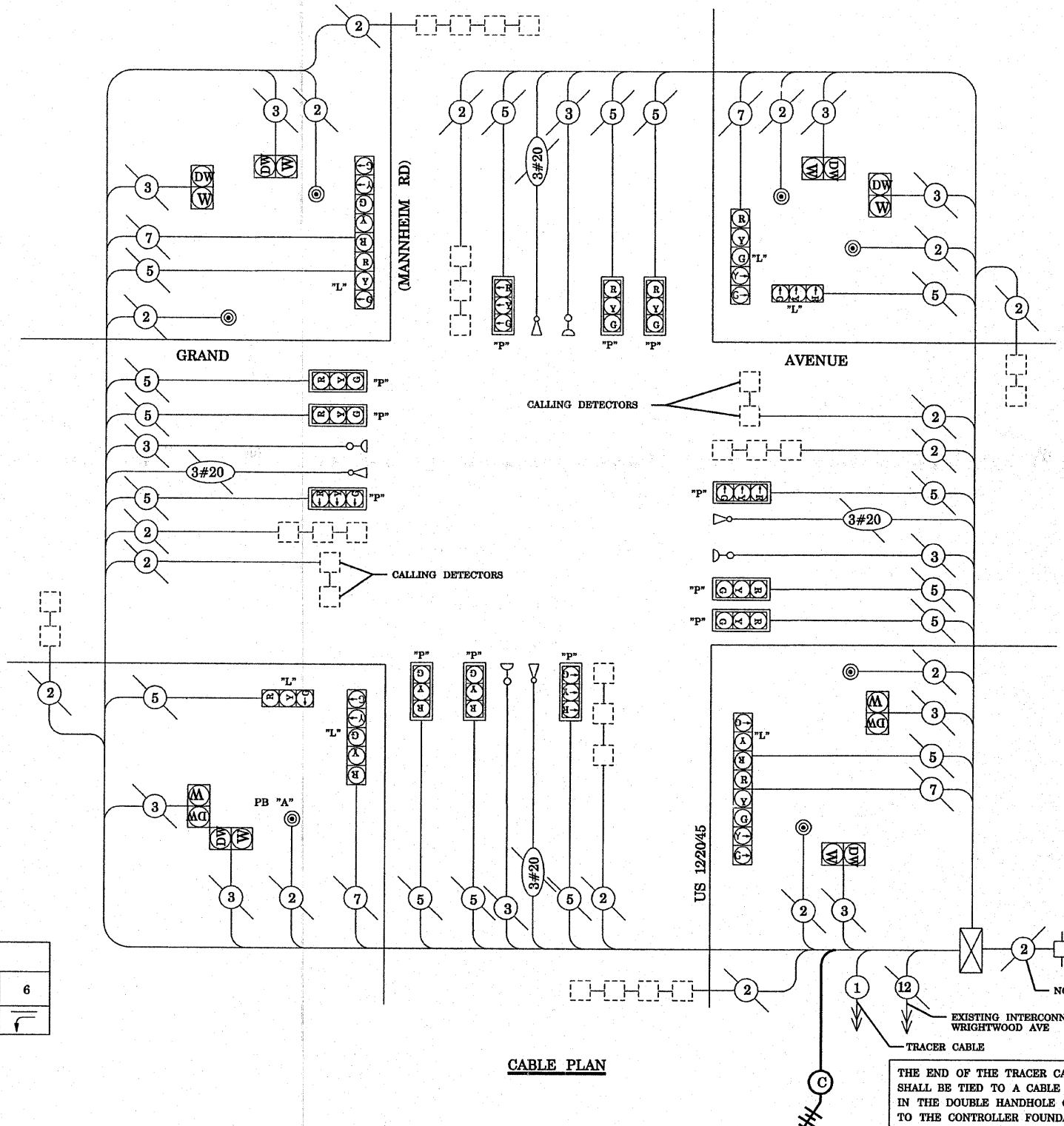
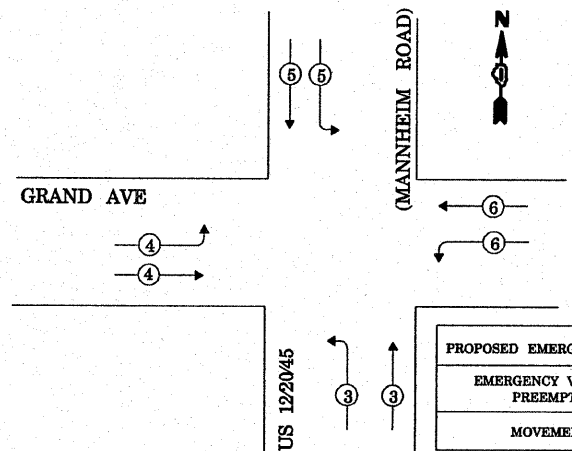


PHASE DESIGNATION DIAGRAM

RIGHT TURN OVERLAP PHASE DESIGNATION

| OVERLAP PHASE | PERMISSIVE PHASE | PROTECTED PHASE | DISPLAY |
|---------------|------------------|-----------------|---------|
| A = | 2 + | 3 - | 2 |
| C = | 6 + | 7 - | 6 |

EMERGENCY VEHICLE PREEMPTION SEQUENCE



CABLE PLAN LEGEND

- | PROPOSED | EXISTING | |
|----------|----------|-------------------------------------------------------------------------------------------------------------|
| | | 8" (200mm) TRAFFIC SIGNAL SECTION |
| | | 12" (300mm) TRAFFIC SIGNAL SECTION |
| | | 12" (300mm) PEDESTRIAN SIGNAL SECTION |
| | | 12" (300mm) PEDESTRIAN SIGNAL SECTION |
| | | CONTROLLER CABINET |
| | | SERVICE INSTALLATION |
| | | TELEPHONE CONNECTION |
| | | MAGNETIC DETECTOR |
| | | PUSHBUTTON DETECTOR |
| | | VEHICLE DETECTOR, INDUCTION LOOP |
| | | DENOTES NUMBER OF CONDUCTORS. ALL CABLE NO. 14 EXCEPT AS INDICATED. ALL LOOP DETECTOR CABLE TO BE SHIELDED. |
| | | SIGNAL FACE WITH BACKPLATE. "P" INDICATES PROGRAMMED HEAD |
| | | RAILROAD CONTROL CABINET |
| | | ILLUMINATED SIGN, FIBER OPTIC "NO LEFT TURN" |
| | | ILLUMINATED SIGN, FIBER OPTIC "NO RIGHT TURN" |
| | | GROUND ROD AT HANDHOLE, DOUBLE HANDHOLE, OR CONTROLLER |
| | | GROUND ROD AT POST OR MAST ARM POLE |
| | | GROUND ROD AT ELECTRIC SERVICE INSTALLATION |
| | | GROUND CABLE IN CONDUIT NO. 6 SOLID COPPER (GREEN) |
| | | FIBER OPTIC CABLE IN CONDUIT NO. 62.5/125 2-MM12F & SM12F |
| | | MICROWAVE VEHICLE SENSOR |
| | | VIDEO DETECTOR |
| | | CLOSED CIRCUIT TV |
| | | EMERGENCY VEHICLE LIGHT DETECTOR |
| | | CONFIRMATION BEACON |
| | | UNINTERRUPTIBLE POWER SUPPLY |
| | | WIRELESS INTERCONNECT (ANTENNA) |

| TYPE | NO. LAMPS | WATTAGE INCAND. | WATTAGE LED | % OPERATION | TOTAL WATTAGE |
|-----------------------------------------------------------------------------------------|-----------|-----------------|-------------|-------------|---------------|
| SIGNAL (RED) | 20 | 17 | 0.50 | 170.00 | |
| (YELLOW) | 20 | 25 | 0.25 | 125.00 | |
| (GREEN) | 20 | 15 | 0.25 | 75.00 | |
| ARROW | 8 | 12 | 0.10 | 9.60 | |
| PED. SIGNAL | 8 | 25 | 1.00 | 200.00 | |
| CONTROLLER | 1 | 100 | 1.00 | 100.00 | |
| ILLUM. SIGN | | | | | |
| FLASHER | | | | | |
| ENERGY COSTS TO: VILLAGE OF FRANKLIN PARK, 4500 BELMONT AVENUE, FRANKLIN PARK, IL 60131 | | | | | TOTAL= 679.60 |
| ENERGY SUPPLY CONTACT: LINDA KLOC, (708)410-5313, COMMONWEALTH EDISON | | | | | |

NOTE:
THE TRAFFIC SIGNAL CONTROLLER EQUIPMENT FOR THIS PROJECT SHALL BE "ECONOLITE" TO MATCH THE EXISTING ADJACENT SYSTEM.

* TEMPORARY WIRELESS INTERCONNECT IS INCLUDED IN TEMPORARY TRAFFIC SIGNAL INSTALLATION PAY ITEM FOR BELMONT AVENUE

NOTE:
PUSHBUTTON "A" SHALL PLACE A CALL IN PHASES 4 AND 6