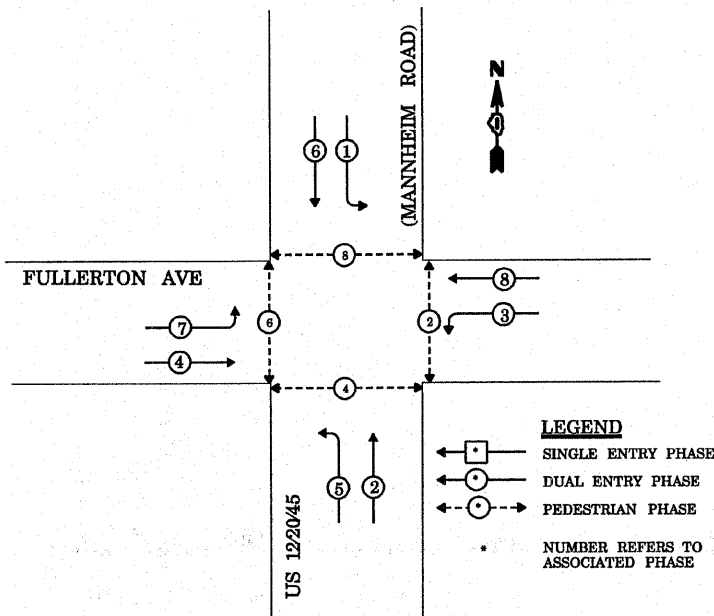
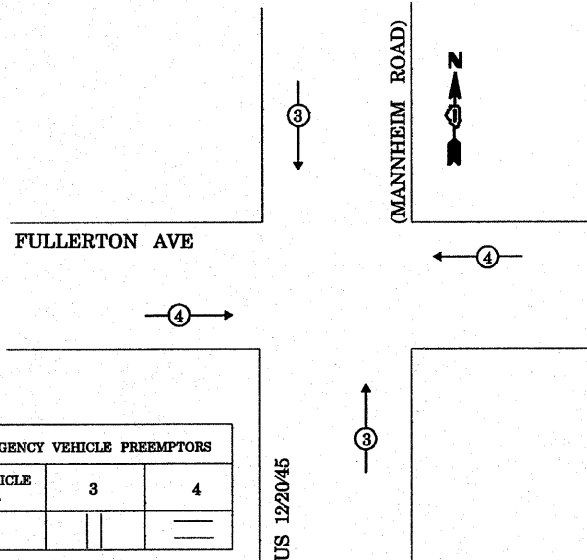


CONTROLLER SEQUENCE

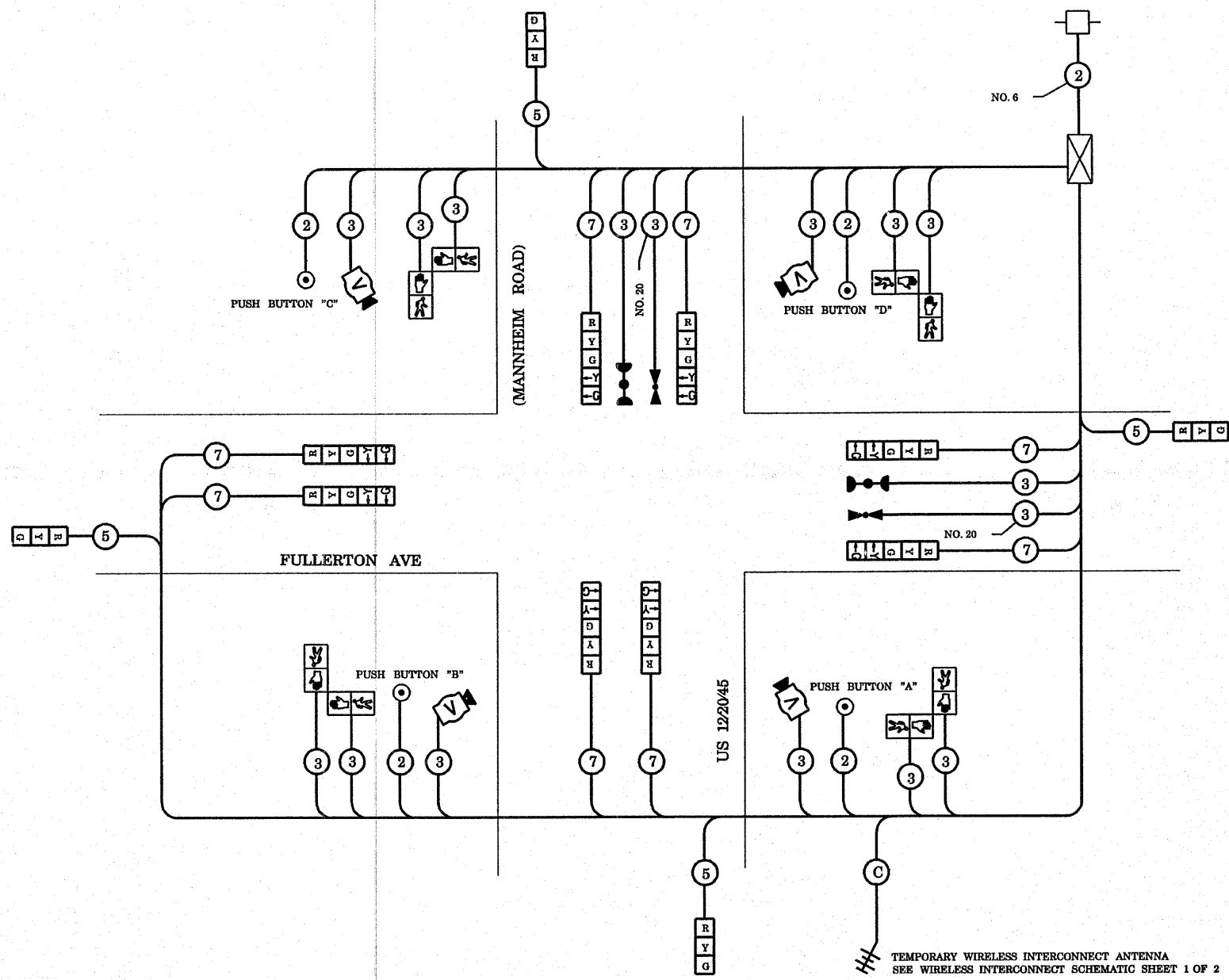


TEMPORARY PHASE DESIGNATION DIAGRAM

EMERGENCY VEHICLE PREEMPTION SEQUENCE



I.D.O.T. TRAFFIC SIGNAL INSTALLATION ELECTRICAL SERVICE REQUIREMENTS						TOTAL WATTAGE
TYPE	NO. LAMPS	WATTAGE		% OPERATION		
		INCAND.	LED			
SIGNAL (RED)	12		17	0.50	102.00	
(YELLOW)	12		25	0.25	75.00	
(GREEN)	12		15	0.25	45.00	
ARROW	16		12	0.10	19.20	
PED SIGNAL	8		25	1.00	200.00	
CONTROLLER	1		100	1.00	100.00	
ILLUM. SIGN				0.05	-	
FLASHER				0.05	-	
ENERGY COSTS TO:					TOTAL =	541.20
VILLAGE OF FRANKLIN PARK 4500 BELMONT AVENUE FRANKLIN PARK, IL 60131 ENERGY SUPPLY CONTACT: LINDA KLOC PHONE: (708)410-5313 COMPANY: COMMONWEALTH EDISON						



TEMPORARY CABLE PLAN

TEMPORARY CABLE DIAGRAM LEGEND

- TEMPORARY TRAFFIC SIGNAL SECTION OR PEDESTRIAN SIGNAL SECTION, 12" (300 mm)
- TEMPORARY CONTROLLER CABINET
- TEMPORARY SERVICE INSTALLATION
- INDICATES NUMBER OF CONDUCTORS IN CABLE. ALL CONDUCTORS TO BE NUMBERED 14 AWG WIRE UNLESS OTHERWISE NOTED.
- EMERGENCY VEHICLE LIGHT DETECTOR
- CONFIRMATION BEACON
- PEDESTRIAN PUSHBUTTON DETECTOR
- VEHICLE DETECTOR, INDUCTION LOOP
- 12" (300 mm) PEDESTRIAN SIGNAL SECTION
- MICROWAVE VEHICLE SENSOR
- VIDEO DETECTOR
- WIRELESS INTERCONNECT (ANTENNA)

NOTE:
THE TRAFFIC SIGNAL CONTROLLER EQUIPMENT FOR THIS PROJECT SHALL BE "ECONOLITE" TO MATCH THE EXISTING ADJACENT SYSTEM.

* TEMPORARY WIRELESS INTERCONNECT IS INCLUDED IN TEMPORARY TRAFFIC SIGNAL INSTALLATION PAY ITEM

NOTE:
PUSHBUTTON "A" SHALL PLACE A CALL IN PHASES 2 AND 4
PUSHBUTTON "B" SHALL PLACE A CALL IN PHASES 4 AND 6
PUSHBUTTON "C" SHALL PLACE A CALL IN PHASES 6 AND 8
PUSHBUTTON "D" SHALL PLACE A CALL IN PHASES 2 AND 8