

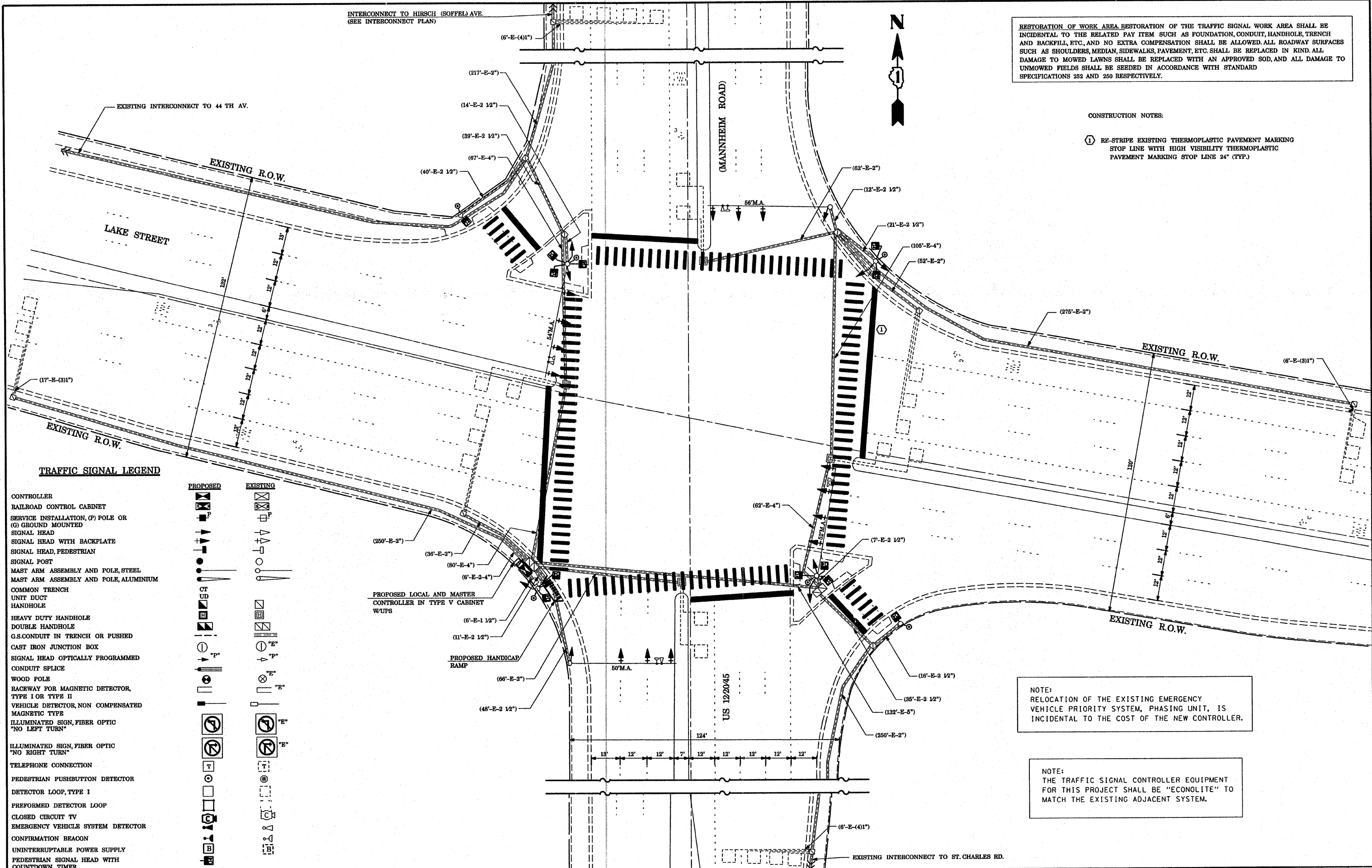
INTERCONNECT TO HIRSCH (SOFFEL) AVE.
(SEE INTERCONNECT PLAN)



RESTORATION OF WORK AREA RESTORATION OF THE TRAFFIC SIGNAL WORK AREA SHALL BE INCIDENTAL TO THE RELATED PAY ITEM SUCH AS FOUNDATION, CONDUIT, HANDHOLE, TRENCH AND BACKFILL, ETC., AND NO EXTRA COMPENSATION SHALL BE ALLOWED. ALL ROADWAY SURFACES SUCH AS SHOULDERS, MEDIAN, SIDEWALKS, PAVEMENT, ETC. SHALL BE REPLACED IN KIND. ALL DAMAGE TO MOWED LAWNS SHALL BE REPLACED WITH AN APPROVED SOD, AND ALL DAMAGE TO UNMOWED FIELDS SHALL BE SEED IN ACCORDANCE WITH STANDARD SPECIFICATIONS 252 AND 250 RESPECTIVELY.

CONSTRUCTION NOTES:

- ① RE-STRIPE EXISTING THERMOPLASTIC PAVEMENT MARKING STOP LINE WITH HIGH VISIBILITY THERMOPLASTIC PAVEMENT MARKING STOP LINE 24" (TYP.)



TRAFFIC SIGNAL LEGEND

- | | | |
|--|--|--|
| CONTROLLER | | |
| RAILROAD CONTROL CABINET | | |
| SERVICE INSTALLATION, (P) POLE OR (G) GROUND MOUNTED | | |
| SIGNAL HEAD | | |
| SIGNAL HEAD WITH BACKPLATE | | |
| SIGNAL HEAD, PEDESTRIAN | | |
| SIGNAL POST | | |
| MAST ARM ASSEMBLY AND POLE, STEEL | | |
| MAST ARM ASSEMBLY AND POLE, ALUMINIUM | | |
| COMMON TRENCH | | |
| UNIT DUCT | | |
| HANDHOLE | | |
| HEAVY DUTY HANDHOLE | | |
| DOUBLE HANDHOLE | | |
| G.S. CONDUIT IN TRENCH OR PUSHED | | |
| CAST IRON JUNCTION BOX | | |
| SIGNAL HEAD OPTICALLY PROGRAMMED | | |
| CONDUIT SLICE | | |
| WOOD POLE | | |
| RACEWAY FOR MAGNETIC DETECTOR, TYPE I OR TYPE II | | |
| VEHICLE DETECTOR, NON COMPENSATED MAGNETIC TYPE | | |
| ILLUMINATED SIGN, FIBER OPTIC "NO LEFT TURN" | | |
| ILLUMINATED SIGN, FIBER OPTIC "NO RIGHT TURN" | | |
| TELEPHONE CONNECTION | | |
| PEDESTRIAN PUSHBUTTON DETECTOR | | |
| DETECTOR LOOP, TYPE I | | |
| PERFORMED DETECTOR LOOP | | |
| CLOSED CIRCUIT TV | | |
| EMERGENCY VEHICLE SYSTEM DETECTOR | | |
| CONFIRMATION BEACON | | |
| UNINTERRUPTIBLE POWER SUPPLY | | |
| PEDESTRIAN SIGNAL HEAD WITH COUNTDOWN TIMER | | |

NOTE:
RELOCATION OF THE EXISTING EMERGENCY VEHICLE PRIORITY SYSTEM, PHASING UNIT, IS INCIDENTAL TO THE COST OF THE NEW CONTROLLER.

NOTE:
THE TRAFFIC SIGNAL CONTROLLER EQUIPMENT FOR THIS PROJECT SHALL BE "ECONOLITE" TO MATCH THE EXISTING ADJACENT SYSTEM.

FILE NAME =	USER NAME = kanthphixybc	DESIGNED - N.B.	REVISED -
ei:\projects\traffic\070027\us12_20_45.dgn		DRAWN - N.B.	REVISED -
PLOT SCALE = 40.0000' / IN.		CHECKED - D.B.	REVISED -
PLOT DATE = 10/10/2008		DATE - 09/04/2008	REVISED -

STATE OF ILLINOIS
DEPARTMENT OF TRANSPORTATION

PROPOSED TRAFFIC SIGNAL PLAN
US 12/20/45 (MANNHEIM ROAD) AT LAKE AVENUE
SCALE: 1" = 20'
SHEET NO. OF SHEETS STA. TO STA.

F.A.P. RTE.	SECTION	COUNTY	TOTAL SHEETS	SHEET NO.
330	2008-006 TS	COOK	104	51
CONTRACT NO. 60E31				
FED. ROAD DIST. NO.	ILLINOIS FED. AID PROJECT			