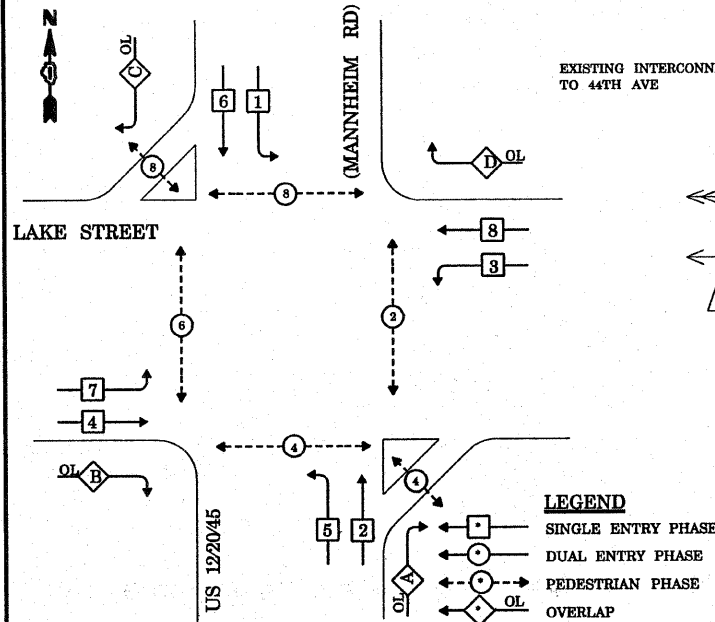


CONTROLLER SEQUENCE



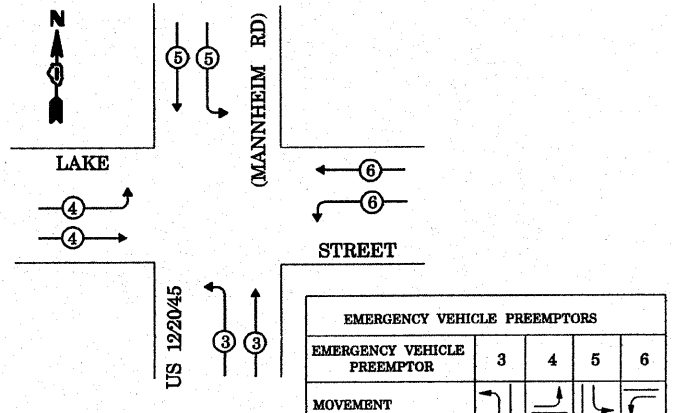
LEGEND
 SINGLE ENTRY PHASE
 DUAL ENTRY PHASE
 PEDESTRIAN PHASE
 OVERLAP
 NUMBER REFERS TO ASSOCIATED PHASE

PHASE DESIGNATION DIAGRAM

RIGHT TURN OVERLAP PHASE DESIGNATION

OVERLAP PHASE	PERMISSIVE PHASE	PROTECTED PHASE	DISPLAY
A	2	3	2
B	4	5	4
C	6	7	6
D	8	1	8

EMERGENCY VEHICLE PREEMPTION SEQUENCE



EMERGENCY VEHICLE PREEMPTORS			
EMERGENCY VEHICLE FREEMPTOR	3	4	5
MOVEMENT	→	→	→

TYPE	NO. LAMPS	WATTAGE INCAND.	WATTAGE LED	% OPERATION	TOTAL WATTAGE
SIGNAL (RED)	24	17	0.50	204.00	
(YELLOW)	24	25	0.25	150.00	
(GREEN)	24	15	0.25	90.00	
ARROW	16	12	0.10	19.20	
PED. SIGNAL	12	25	1.00	300.00	
CONTROLLER	1	100	1.00	100.00	
ILLUM. SIGN			0.05	-	
FLASHER			0.05	-	
ENERGY COSTS TO: VILLAGE OF MELROSE PARK					TOTAL = 863.20
ENERGY SUPPLY CONTACT: MR. MIKE BELL					
PHONE: (708)410-5314					
COMPANY: COMMONWEALTH EDISON					

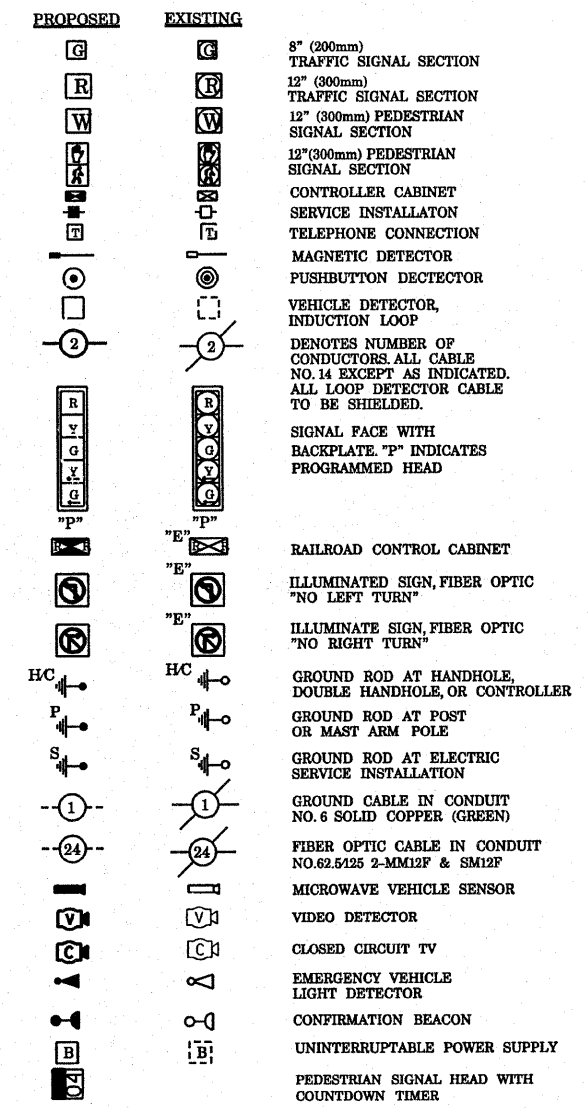
FILE NAME =	DESIGNED - N.B.	REVISED -
USER NAME = kanthaphibaybc	DRAWN - N.B.	REVISED -
PROJECT OBJECTS TO OFFICE\070027\us12_20_45.dgn	CHECKED - D.B.	REVISED -
PLOT SCALE = 48.0000' / IN.	DATE - 09/04/2008	REVISED -
PLOT DATE = 10/10/2008		

NOTE:

PUSHBUTTON "A" SHALL PLACE A CALL IN PHASES 2 AND 4
 PUSHBUTTON "B" SHALL PLACE A CALL IN PHASES 4 AND 6
 PUSHBUTTON "C" SHALL PLACE A CALL IN PHASES 6 AND 8
 PUSHBUTTON "D" SHALL PLACE A CALL IN PHASES 2 AND 8

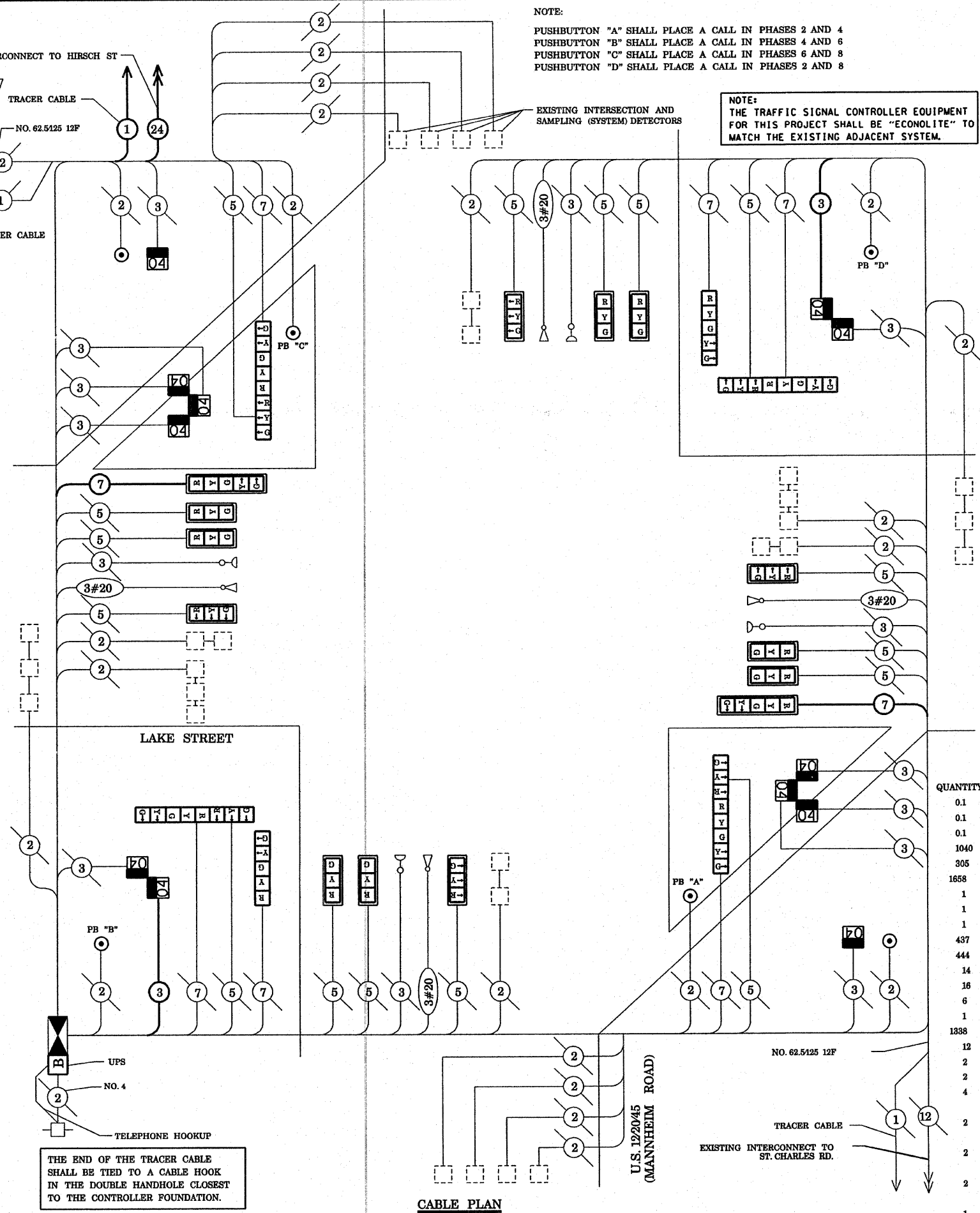
NOTE:
 THE TRAFFIC SIGNAL CONTROLLER EQUIPMENT FOR THIS PROJECT SHALL BE "ECONOLITE" TO MATCH THE EXISTING ADJACENT SYSTEM.

CABLE PLAN LEGEND



SCHEDULE OF QUANTITIES

QUANTITY	UNIT	ITEM
0.1	L SUM	TRAFFIC CONTROL AND PROTECTION, STANDARD 701501
0.1	L SUM	TRAFFIC CONTROL AND PROTECTION, STANDARD 701701
0.1	L SUM	TRAFFIC CONTROL AND PROTECTION, STANDARD 701801
1040	FOOT	THERMOPLASTIC PAVEMENT MARKING - LINE 12"
305	FOOT	THERMOPLASTIC PAVEMENT MARKING - LINE 24"
1658	SQ FT	THERMOPLASTIC PAVEMENT MARKING REMOVAL
1	EACH	MAINTENANCE OF EXISTING TRAFFIC SIGNAL INSTALLATION
1	EACH	FULL-ACTUATED CONTROLLER AND TYPE V CABINET, SPECIAL
1	EACH	MASTER CONTROLLER, SPECIAL
437	FOOT	ELECTRIC CABLE IN CONDUIT, SIGNAL NO. 14 3C
444	FOOT	ELECTRIC CABLE IN CONDUIT, SIGNAL NO. 14 7C
14	EACH	TRAFFIC SIGNAL BACKPLATE, LOUVERED, ALUMINUM
16	EACH	INDUCTIVE LOOP DETECTOR
6	EACH	PEDESTRIAN PUSH-BUTTON
1	EACH	REMOVE EXISTING TRAFFIC SIGNAL EQUIPMENT
1388	FOOT	REMOVE ELECTRIC CABLE FROM CONDUIT
12	EACH	SIGNAL HEAD, L.E.D., 1-FACE, 3-SECTION, MAST ARM MOUNTED
2	EACH	SIGNAL HEAD, L.E.D., 1-FACE, 5-SECTION, BRACKET MOUNTED
2	EACH	SIGNAL HEAD, L.E.D., 1-FACE, 5-SECTION, MAST ARM MOUNTED
4	EACH	SIGNAL HEAD, L.E.D., 2-FACE, 1-3 SECTION, 1-5 SECTION, BRACKET MOUNTED
2	EACH	PEDESTRIAN SIGNAL HEAD, L.E.D., 1-FACE, BRACKET MOUNTED WITH COUNTDOWN TIMER
2	EACH	PEDESTRIAN SIGNAL HEAD, L.E.D., 2-FACE, BRACKET MOUNTED WITH COUNTDOWN TIMER
2	EACH	PEDESTRIAN SIGNAL HEAD, L.E.D., 3-FACE, BRACKET MOUNTED WITH COUNTDOWN TIMER
1	EACH	UNINTERRUPTIBLE POWER SUPPLY



CABLE PLAN

STATE OF ILLINOIS
 DEPARTMENT OF TRANSPORTATION

PROPOSED CABLE PLAN
 US 12/2045 (MANNHEIM ROAD) AT LAKE STREET

F.A.P. RTE.	SECTION	COUNTY	TOTAL SHEETS	SHEET NO.
330	2008-006 TS	COOK	104	62
CONTRACT NO. 60E31				
SCALE: N.T.S.		SHEET NO. OF SHEETS		STA. TO STA.
FED. ROAD DIST. NO.		ILLINOIS FED. AID PROJECT		