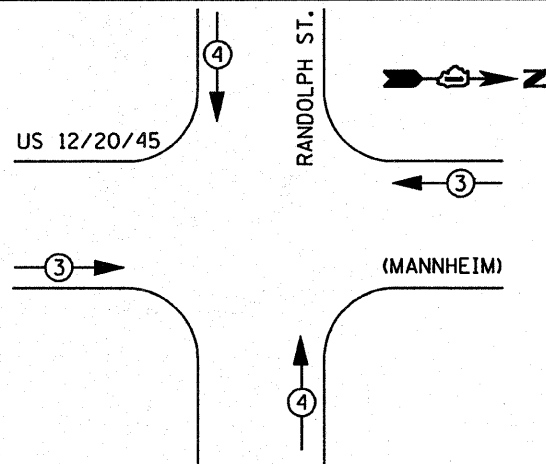


- LEGEND**
- ⊕ DUAL ENTRY PHASE
 - ⊕ SINGLE ENTRY PHASE
 - OL OVERLAP
 - ⊕ PEDESTRIAN PHASE
 - * NUMBER REFERS TO ASSOCIATED PHASE

**SIGNAL INSTALLATION
EMERGENCY VEHICLE PREEMPTION SEQUENCE**



| EMERGENCY VEHICLE PREEMPTOR | | |
|-----------------------------|---|---|
| EMERGENCY VEHICLE PREEMPTOR | 3 | 4 |
| MOVEMENT | → | ↑ |

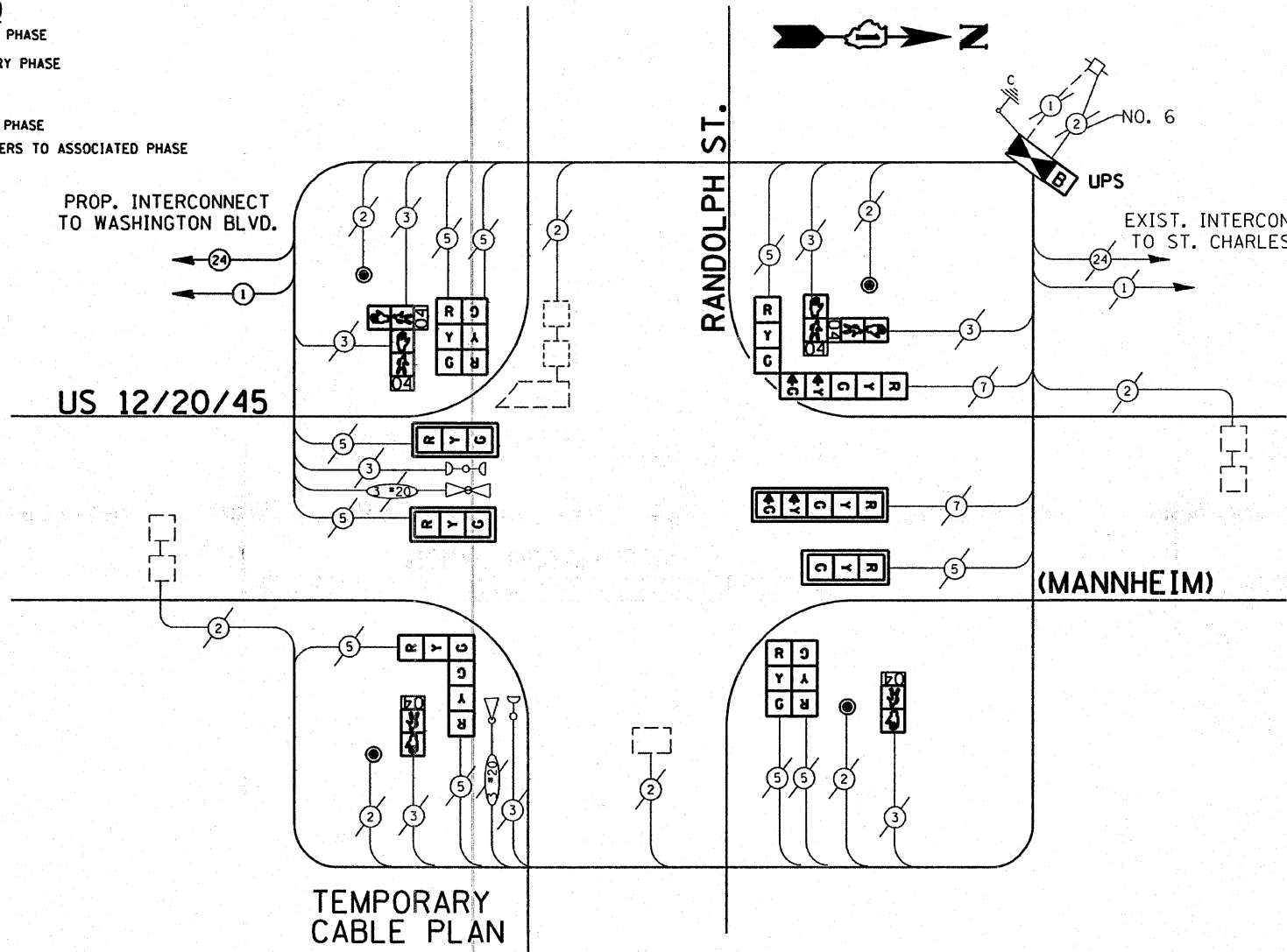
| I.D.O.T TRAFFIC SIGNAL INSTALLATION ELECTRICAL SERVICE REQUIREMENTS | | | | | TOTAL WATTAGE |
|---|-----------|----------------------|-----|-------------|------------------|
| TYPE | NO. LAMPS | WATTAGE (INCAND.) | LED | % OPERATION | |
| SIGNAL (RED) | 12 | 135 | 17 | 0.50 | 102.00 |
| (YELLOW) | 12 | 135 | 25 | 0.25 | 75.00 |
| (GREEN) | 12 | 135 | 15 | 0.25 | 45.00 |
| ARROW | 4 | 135 | 12 | 0.10 | 4.80 |
| PED. SIGNAL | 6 | 90 | 25 | 1.00 | 150.00 |
| CONTROLLER | 1 | 100 | 100 | 1.00 | 100.00 |
| ILLUM. SIGN | | 84 | | 0.05 | |
| FLASHER | | | | 0.50 | |
| ENERGY COSTS TO: | | | | | TOTAL = 476.80 |

| FOUNDATION (DEPTH) | FT. (m) | CABLE SLACK | FT. (m) | VERTICAL | FT. (m) |
|--------------------|----------|------------------|-----------|-------------------|------------|
| TYPE A - POST | 4 (1.2) | HANDHOLE | 6.5 (2.0) | ALL FOUNDATIONS | 3.5 (1.0) |
| D - CONTROLLER | 4 (1.2) | DOUBLE HANDHOLE | 13 (4.0) | MAST ARM (L) POLE | 20'±L-2' |
| E - M. ARM POLE | 4 (1.2) | SIGNAL POST | 2 (0.5) | (6m±L-0.6m)± | |
| 24" (600mm) | 10 (3.0) | CONTROLLER CAB. | 1 (0.5) | BRACKET MOUNTED | 13 (4.0) |
| 30" (750mm) | 15 (4.6) | FIBER OPTIC | 13 (4.0) | PED. PUSHBUTTON | 4 (1.2) |
| 36" (900mm) | 15 (4.6) | ELECTRIC SERVICE | 1 (0.5) | ELECTRIC SERVICE | 13.5 (4.1) |
| | | GROUND CABLE | 1 (0.5) | SERVICE TO GROUND | 13.5 (4.1) |
| | | | | POST MOUNTED | 6 (1.8) |

ENERGY SUPPLY CONTACT: _____
 PHONE: 708-410-5069
 COMPANY: COM. EDISON

FILE NAME = _____
 USER NAME = kenthaphixaybc
 DESIGNED - BCK
 DRAWN - BCK
 CHECKED - DAD
 DATE - _____

REVISIONS:
 REVISED - _____
 REVISED - _____
 REVISED - _____



SCHEDULE OF QUANTITIES

| ITEM | UNIT | QUANTITY |
|---|------|----------|
| FULL-ACTUATED CONTROLLER AND TYPE IV CABINET (SPECIAL) | EACH | 1 |
| TRANSCEIVER-FIBER OPTIC | EACH | 1 |
| INDUCTIVE LOOP DETECTOR | EACH | 4 |
| SIGNAL HEAD, L.E.D. 1-FACE, 3 SECTION, MAST ARM MNTD. | EACH | 3 |
| SIGNAL HEAD, L.E.D. 1-FACE, 5 SECTION, MAST ARM MNTD. | EACH | 1 |
| SIGNAL HEAD, L.E.D. 2-FACE, 1-3, 1-5 SECTION, BRKT. MNTD. | EACH | 1 |
| SIGNAL HEAD, L.E.D. 2-FACE, 3 SECTION, BRKT. MNTD. | EACH | 3 |
| PEDESTRIAN SIGNAL HEAD, L.E.D., 1-FACE, BRKT. MTD. with COUNTDOWN TIMER | EACH | 2 |
| PEDESTRIAN SIGNAL HEAD, L.E.D., 2-FACE, BRKT. MTD. with COUNTDOWN TIMER | EACH | 2 |
| PEDESTRIAN PUSH-BUTTON | EACH | 4 |
| TRAFFIC SIGNAL BACKPLATE, LOUVERED, ALUMINUM | EACH | 4 |
| REMOVE EXISTING TRAFFIC SIGNAL EQUIPMENT | EACH | 1 |
| UNINTERRUPTIBLE POWER SUPPLY | EACH | 1 |
| THERMOPLASTIC PAVEMENT MARKING LINE 12" | FOOT | 320 |
| THERMOPLASTIC PAVEMENT MARKING LINE 24" | FOOT | 90 |
| THERMOPLASTIC PAVEMENT MARKING REMOVAL | FOOT | 451 |
| MAINTENANCE OF EXISTING TRAFFIC SIGNAL EQUIPMENT | EACH | 1 |

RESTORATION OF WORK AREA. RESTORATION OF THE TRAFFIC SIGNAL WORK AREA SHALL BE INCIDENTAL TO THE RELATED PAY ITEM SUCH AS FOUNDATION, CONDUIT, HANDHOLE, TRENCH AND BACKFILL, ETC., AND NO EXTRA COMPENSATION SHALL BE ALLOWED. ALL ROADWAY SURFACES SUCH AS SHOULDERS, MEDIAN, SIDEWALKS, PAVEMENT, ETC. SHALL BE REPLACED IN KIND. ALL DAMAGE TO MOWED LAWNS SHALL BE REPLACED WITH AN APPROVED SOD, AND ALL DAMAGE TO UNMOWED FIELDS SHALL BE SEEDING IN ACCORDANCE WITH STANDARD SPECIFICATIONS 252 AND 250 RESPECTIVELY.

CABLE PLAN LEGEND

- | | PROPOSED | EXISTING |
|--|----------------|----------------|
| CONTROLLER CABINET | ⊕ | ⊕ |
| RAILROAD CONTROL CABINET | ⊕ | ⊕ |
| SERVICE INSTALLATION, (P) POLE OR (G) GROUND MOUNT | ⊕ ^P | ⊕ ^P |
| TELEPHONE CONNECTION | ⊕ | ⊕ |
| GROUND ROD AT (C) CONTROLLER, (H) HANDHOLE, (P) POST, (M) MAST ARM, OR (S) SERVICE | ⊕ ^C | ⊕ ^C |
| FIBER OPTIC CABLE IN CONDUIT, NUMBER OF FIBERS AS NOTED | ---24--- | ---24--- |
| ELECTRIC CABLE IN CONDUIT, NO. 14, UNLESS OTHERWISE NOTED, NUMBER OF CONDUCTORS AS NOTED | ---2--- | ---2--- |
| GROUND CABLE IN CONDUIT NO. 6 COPPER (GREEN) | ---1--- | ---1--- |
| SIGNAL FACE WITH BACKPLATE, "P" INDICATES PROGRAMMED HEAD | ⊕ ^P | ⊕ ^P |
| 12" (300mm) RED WITH 8" (200mm) YELLOW AND GREEN TRAFFIC SIGNAL FACE | ⊕ | ⊕ |
| 12" (300mm) TRAFFIC SIGNAL SECTION | ⊕ | ⊕ |
| 12" (300mm) PEDESTRIAN SIGNAL SECTION with COUNTDOWN TIMER | ⊕ | ⊕ |
| ILLUMINATED SIGN "NO LEFT TURN" | ⊕ | ⊕ |
| ILLUMINATED SIGN "NO RIGHT TURN" | ⊕ | ⊕ |
| PUSHBUTTON DETECTOR | ⊕ | ⊕ |
| DETECTOR LOOP | ⊕ | ⊕ |
| PERFORMED DETECTOR LOOP | ⊕ | ⊕ |
| MICROWAVE VEHICLE SENSOR | ⊕ | ⊕ |
| VIDEO DETECTOR | ⊕ | ⊕ |
| CLOSED CIRCUIT TV | ⊕ | ⊕ |
| EMERGENCY VEHICLE SYSTEM DETECTOR | ⊕ | ⊕ |
| CONFIRMATION BEACON | ⊕ | ⊕ |
| UNINTERRUPTIBLE POWER SUPPLY | ⊕ | ⊕ |

NOTE: THE TRAFFIC SIGNAL CONTROL EQUIPMENT FOR THIS PROJECT SHALL BE "ECONOLITE" TO MATCH THE ADJACENT SYSTEM.

STATE OF ILLINOIS
 DEPARTMENT OF TRANSPORTATION

PROPOSED CABLE INSTALLATION PLAN
 US 12/20/45 (MANNHEIM) @ RANDOLPH ST.

| F.A.P. RTE. | SECTION | COUNTY | TOTAL SHEETS | SHEET NO. |
|---------------------|-------------|---------------------------|--------------|-----------|
| 330 | 2008-006 TS | COOK | 100 | 60 |
| CONTRACT NO. 60E31 | | | | |
| FED. ROAD DIST. NO. | | ILLINOIS FED. AID PROJECT | | |