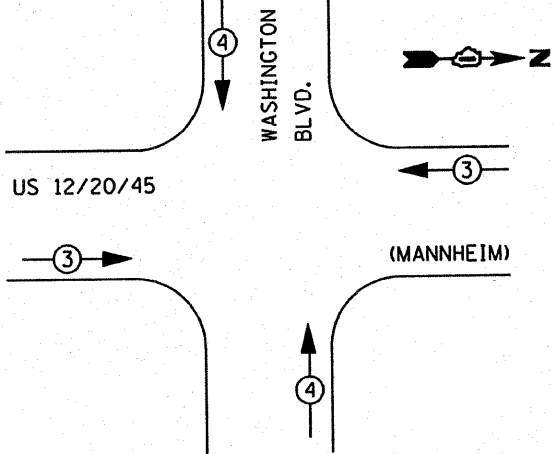


PHASE DESIGNATION DIAGRAM
DUAL ENTRY - ALL LEGS
PERMITTED LEFT TURN PHASING

**TEMPORARY SIGNAL INSTALLATION
EMERGENCY VEHICLE PREEMPTION SEQUENCE**

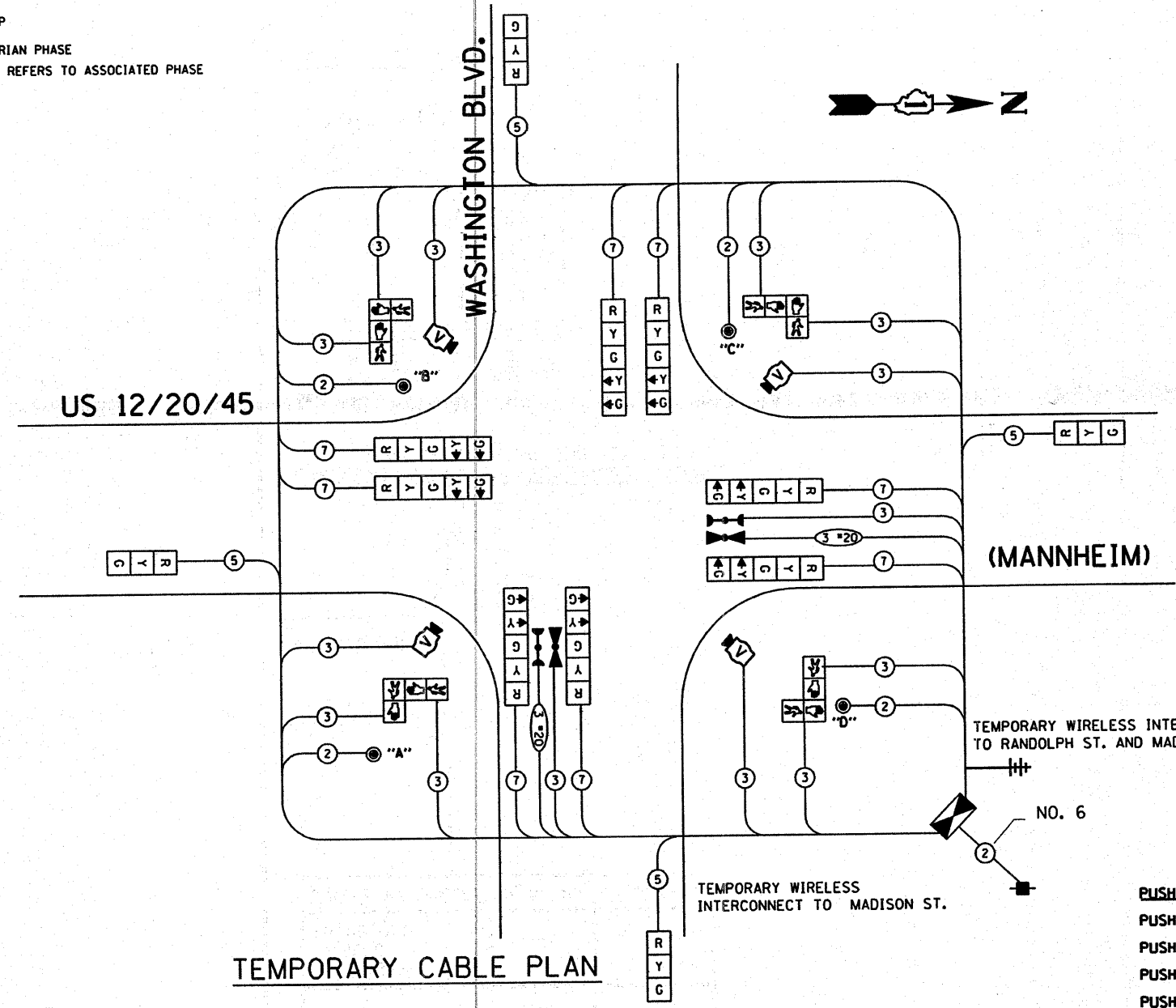


TEMPORARY EMERGENCY VEHICLE PREEMPTOR		
EMERGENCY VEHICLE PREEMPTOR	3	4
MOVEMENT	→	↑

- LEGEND**
- ⊕ DUAL ENTRY PHASE
 - ⊙ SINGLE ENTRY PHASE
 - OL OVERLAP
 - ⊕ PEDESTRIAN PHASE
 - * NUMBER REFERS TO ASSOCIATED PHASE

TEMPORARY CABLE DIAGRAM LEGEND

- | | PROPOSED | EXISTING |
|--|----------------|----------------|
| TEMPORARY CONTROLLER CABINET | ⊕ | ⊕ |
| TEMPORARY SERVICE INSTALLATION, (P) POLE OR (G) GROUND MOUNT | ⊕ ^P | ⊕ ^P |
| TEMPORARY TRAFFIC SIGNAL SECTION OR PEDESTRIAN SIGNAL SECTION, 12" (300 mm) | R | R |
| 12" (300 MM) PEDESTRIAN SIGNAL SECTION | ⊕ | ⊕ |
| ELECTRIC CABLE IN CONDUIT, NO. 14, UNLESS OTHERWISE NOTED, NUMBER OF CONDUCTORS AS NOTED | 2 | 2 |
| PEDESTRIAN PUSHBUTTON DETECTOR | ⊙ | ⊙ |
| VEHICLE DETECTOR, INDUCTION LOOP | □ | □ |
| MICROWAVE VEHICLE SENSOR | M | M |
| VIDEO DETECTOR | V | V |
| CLOSED CIRCUIT TV | C | C |
| EMERGENCY VEHICLE SYSTEM DETECTOR | E | E |
| CONFIRMATION BEACON | I | I |
| WIRELESS INTERCONNECT (ANTENNA) | ⊕ | ⊕ |



TEMPORARY CABLE PLAN

- PUSH-BUTTON NOTES:**
- PUSH-BUTTON "A" SHALL PLACE A CALL IN PHASES 2 AND 4
 - PUSH-BUTTON "B" SHALL PLACE A CALL IN PHASES 4 AND 6
 - PUSH-BUTTON "C" SHALL PLACE A CALL IN PHASES 6 AND 8
 - PUSH-BUTTON "D" SHALL PLACE A CALL IN PHASES 2 AND 8

NOTE:
PROPOSED TEMPORARY WIRELESS INTERCONNECT IS INCLUDED IN TEMPORARY TRAFFIC SIGNAL INSTALLATION PAY ITEM.

RESTORATION OF WORK AREA. RESTORATION OF THE TRAFFIC SIGNAL WORK AREA SHALL BE INCIDENTAL TO THE RELATED PAY ITEM SUCH AS FOUNDATION, CONDUIT, HANDHOLE, TRENCH AND BACKFILL, ETC., AND NO EXTRA COMPENSATION SHALL BE ALLOWED. ALL ROADWAY SURFACES SUCH AS SHOULDERS, MEDIAN, SIDEWALKS, PAVEMENT, ETC. SHALL BE REPLACED IN KIND. ALL DAMAGE TO MOWED LAWNS SHALL BE REPLACED WITH AN APPROVED SOD, AND ALL DAMAGE TO UNMOWED FIELDS SHALL BE SEED IN ACCORDANCE WITH STANDARD SPECIFICATIONS 252 AND 250 RESPECTIVELY.

NOTE:
THE TRAFFIC SIGNAL CONTROL EQUIPMENT FOR THIS PROJECT SHALL BE "ECONOLITE" TO MATCH THE ADJACENT SYSTEM.

I.D.O.T. TRAFFIC SIGNAL INSTALLATION ELECTRICAL SERVICE REQUIREMENTS

TYPE	NO. LAMPS	WATTAGE (INCAN.)	LED	% OPERATION	TOTAL WATTAGE
SIGNAL (RED)	12	135	17	0.50	102.00
(YELLOW)	12	135	25	0.25	75.00
(GREEN)	12	135	15	0.25	45.00
ARROW	16	135	12	0.10	19.20
PED. SIGNAL	8	90	25	1.00	200.00
CONTROLLER	1	100	100	1.00	100.00
ILLUM. SIGN		84		0.05	

ENERGY COSTS TO: ILLINOIS DEPARTMENT OF TRANSPORTATION

TOTAL = 541.20

ENERGY SUPPLY CONTACT: 708-410-5069
PHONE: COM. EDISON
COMPANY:

FOUNDATION (DEPTH)	FT. (m)	CABLE SLACK	FT. (m)	VERTICAL	FT. (m)
TYPE A - POST	4 (1.2)	HANDHOLE	6.5 (2.0)	ALL FOUNDATIONS	3.5 (1.0)
D - CONTROLLER	4 (1.2)	DOUBLE HANDHOLE	13 (4.0)	MAST ARM (L) POLE	20'-11"-2"
E - M. ARM POLE		SIGNAL POST	2 (1.0)	(6m+L-0.6m)	
24" (600mm)	10 (3.0)	CONTROLLER CAB.	1 (0.5)	BRACKET MOUNTED	13 (4.0)
30" (750mm)	15 (4.6)	FIBER OPTIC	13 (4.0)	PED. PUSHBUTTON	4 (1.2)
36" (900mm)	15 (4.6)	ELECTRIC SERVICE	1 (0.5)	ELECTRIC SERVICE	13.5 (4.1)
		GROUND CABLE	1 (0.5)	SERVICE TO GROUND	13.5 (4.1)
				POST MOUNTED	6 (1.8)

**STATE OF ILLINOIS
DEPARTMENT OF TRANSPORTATION**

**TEMPORARY CABLE PLAN
US 12/20/45 (MANNHEIM) @ WASHINGTON BLVD.**

F.A.P. RTE.	SECTION	COUNTY	TOTAL SHEETS	SHEET NO.
330	2008-006 TS	COOK	100	62

CONTRACT NO. 60E31