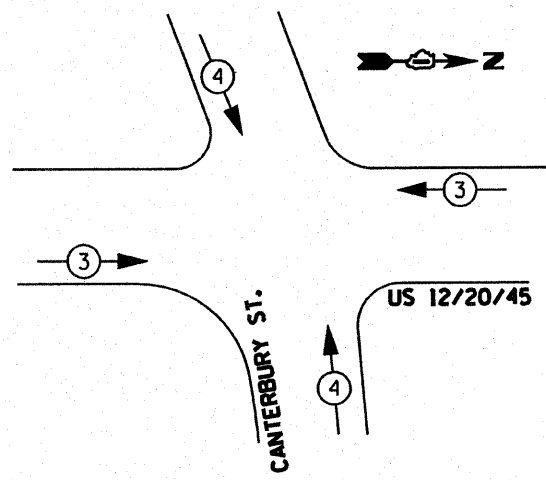
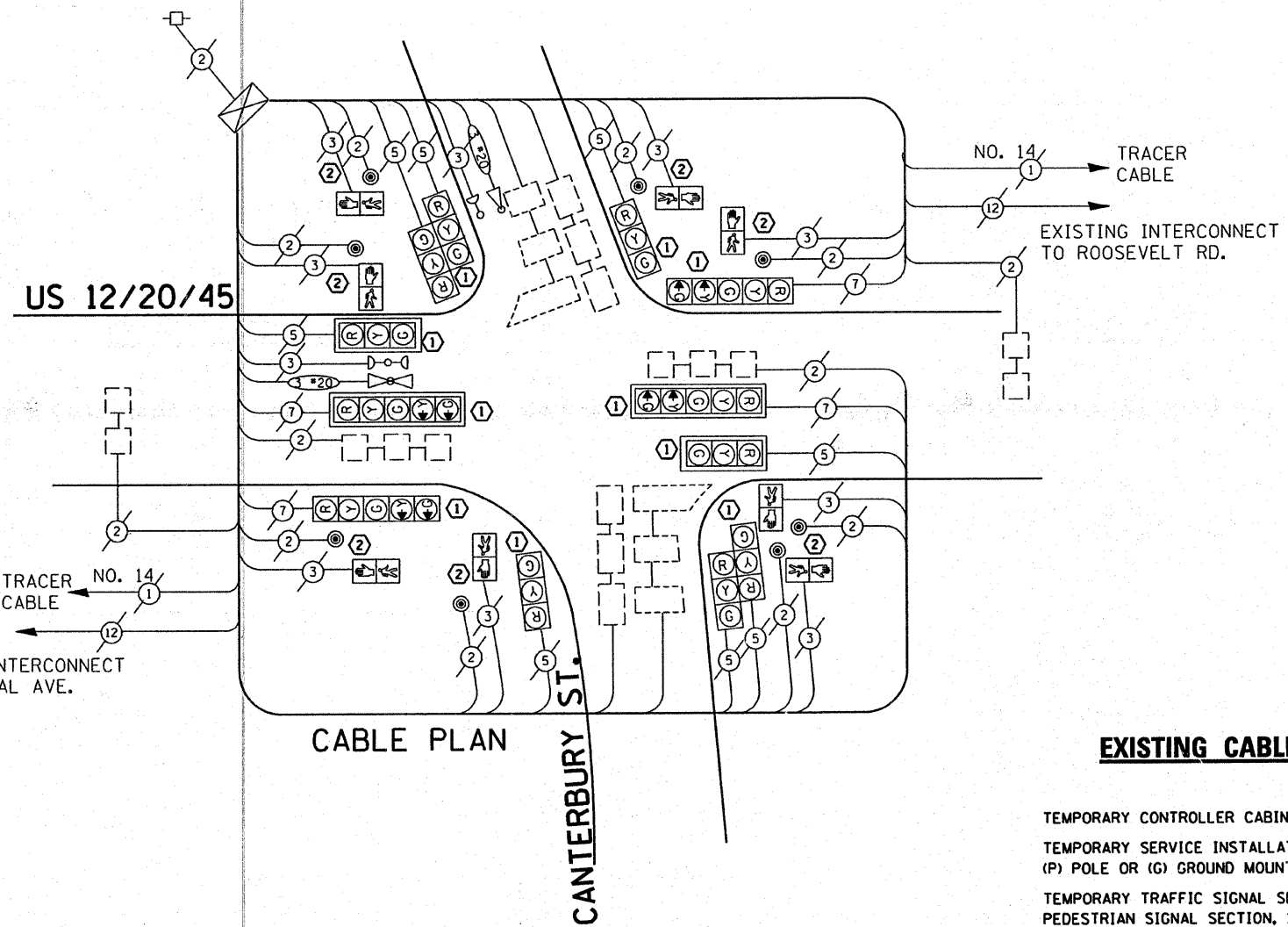


PHASE DESIGNATION DIAGRAM



EXISTING EMERGENCY VEHICLE PREEMPTION SEQUENCE

- LEGEND**
- ⊕ DUAL ENTRY PHASE
 - ⊙ SINGLE ENTRY PHASE
 - OL OVERLAP
 - ⊕ PEDESTRIAN PHASE
 - * NUMBER REFERS TO ASSOCIATED PHASE



CABLE PLAN

PROPOSED EMERGENCY VEHICLE PREEMPTOR		
EMERGENCY VEHICLE PREEMPTOR	3	4
MOVEMENT	→	↘ ↗

EXISTING CABLE DIAGRAM LEGEND

- | | PROPOSED | EXISTING |
|--|----------|----------|
| TEMPORARY CONTROLLER CABINET | ⊕ | ⊕ |
| TEMPORARY SERVICE INSTALLATION, (P) POLE OR (G) GROUND MOUNT | ⊙ | ⊙ |
| TEMPORARY TRAFFIC SIGNAL SECTION OR PEDESTRIAN SIGNAL SECTION, 12" (300 mm) | R | R |
| 12" (300 MM) PEDESTRIAN SIGNAL SECTION | ⊕ | ⊕ |
| ELECTRIC CABLE IN CONDUIT, NO. 14, UNLESS OTHERWISE NOTED. NUMBER OF CONDUCTORS AS NOTED | ② | ② |
| PEDESTRIAN PUSHBUTTON DETECTOR | ⊙ | ⊙ |
| VEHICLE DETECTOR, INDUCTION LOOP | □ | □ |
| MICROWAVE VEHICLE SENSOR | M | M |
| VIDEO DETECTOR | V | V |
| CLOSED CIRCUIT TV | C | C |
| EMERGENCY VEHICLE SYSTEM DETECTOR | ⊕ | ⊕ |
| CONFIRMATION BEACON | ⊕ | ⊕ |

NOTE:
THE TRAFFIC SIGNAL CONTROL EQUIPMENT FOR THIS PROJECT SHALL BE "ECONOLITE" TO MATCH THE ADJACENT SYSTEM.

I.D.O.T. TRAFFIC SIGNAL INSTALLATION ELECTRICAL SERVICE REQUIREMENTS					TOTAL WATTAGE
TYPE	NO. LAMPS	WATTAGE (INCAND.)	LED	% OPERATION	
SIGNAL (RED)	12	135	17	0.50	
(YELLOW)	12	135	25	0.25	
(GREEN)	12	135	15	0.25	
ARROW	8	135	12	0.10	
PED. SIGNAL	8	90	25	1.00	
CONTROLLER	1	100	100	1.00	
ILLUM. SIGN		84		0.05	
FLASHER				0.50	
ENERGY COSTS TO:					TOTAL =

FOUNDATION (DEPTH)	FT. (m)	CABLE SLACK	FT. (m)	VERTICAL	FT. (m)
TYPE A - POST	4 (1.2)	HANDHOLE	6.5 (2.0)	ALL FOUNDATIONS	3.5 (1.0)
D - CONTROLLER	4 (1.2)	DOUBLE HANDHOLE	13 (4.0)	MAST ARM (L) POLE	20'-H-2" (6m+L-0.6m)
E - M. ARM POLE		SIGNAL POST	2 (1.0)	BRACKET MOUNTED	13 (4.0)
24" (600mm)	10 (3.0)	CONTROLLER CAB.	1 (0.5)	PED. PUSHBUTTON	4 (1.2)
30" (750mm)	15 (4.6)	FIBER OPTIC	13 (4.0)	ELECTRIC SERVICE	13.5 (4.1)
36" (900mm)	15 (4.6)	ELECTRIC SERVICE	1 (0.5)	SERVICE TO GROUND	13.5 (4.1)
		GROUND CABLE	1 (0.5)	POST MOUNTED	6 (1.8)

ENERGY SUPPLY CONTACT: DAVE LISKA
 PHONE: (773) 509-3417
 COMPANY: COM. EDISON

FILE NAME = c:\projects\traffic\1070027\us12_20_45.dgn
 USER NAME = kanthaphaybc
 PLOT SCALE = 48,0000 "/ IN.
 PLOT DATE = 10/10/2008

DESIGNED - BCK
 DRAWN - BCK
 CHECKED - DAD
 DATE -

REVISED -
 REVISED -
 REVISED -
 REVISED -

STATE OF ILLINOIS
 DEPARTMENT OF TRANSPORTATION

EXISTING CABLE PLAN
 US 12/20/45 (MANNHEIM) @ CANTERBURY ST.

SCALE: SHEET NO. OF SHEETS STA. TO STA.

F.A.P. RTE.	SECTION	COUNTY	TOTAL SHEETS	SHEET NO.
330	2008-006 TS	COOK	100	81
CONTRACT NO. 60E31				
FED. ROAD DIST. NO. ILLINOIS FED. AID PROJECT				