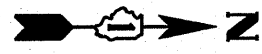


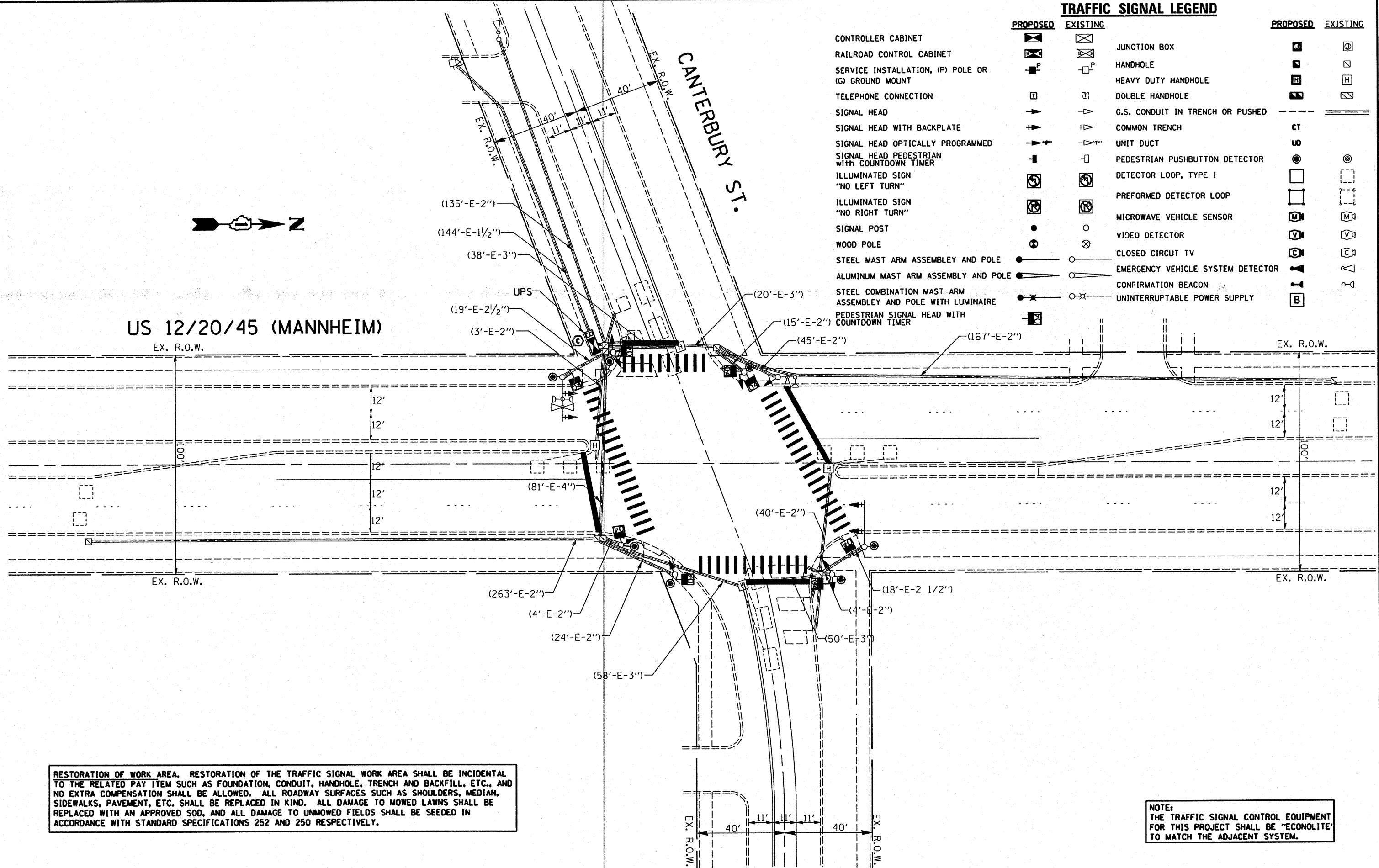
**TRAFFIC SIGNAL LEGEND**

	PROPOSED	EXISTING		PROPOSED	EXISTING
CONTROLLER CABINET			JUNCTION BOX		
RAILROAD CONTROL CABINET			HANDHOLE		
SERVICE INSTALLATION, (P) POLE OR (G) GROUND MOUNT			HEAVY DUTY HANDHOLE		
TELEPHONE CONNECTION			DOUBLE HANDHOLE		
SIGNAL HEAD			G.S. CONDUIT IN TRENCH OR PUSHED		
SIGNAL HEAD WITH BACKPLATE			COMMON TRENCH	CT	
SIGNAL HEAD OPTICALLY PROGRAMMED			UNIT DUCT	UD	
SIGNAL HEAD PEDESTRIAN with COUNTDOWN TIMER			PEDESTRIAN PUSHBUTTON DETECTOR		
ILLUMINATED SIGN "NO LEFT TURN"			DETECTOR LOOP, TYPE I		
ILLUMINATED SIGN "NO RIGHT TURN"			PERFORMED DETECTOR LOOP		
SIGNAL POST			MICROWAVE VEHICLE SENSOR		
WOOD POLE			VIDEO DETECTOR		
STEEL MAST ARM ASSEMBLY AND POLE			CLOSED CIRCUIT TV		
ALUMINUM MAST ARM ASSEMBLY AND POLE			EMERGENCY VEHICLE SYSTEM DETECTOR		
STEEL COMBINATION MAST ARM ASSEMBLY AND POLE WITH LUMINAIRE			CONFIRMATION BEACON		
PEDESTRIAN SIGNAL HEAD WITH COUNTDOWN TIMER			UNINTERRUPTIBLE POWER SUPPLY		



**US 12/20/45 (MANNHEIM)**

**CANTERBURY ST.**



RESTORATION OF WORK AREA. RESTORATION OF THE TRAFFIC SIGNAL WORK AREA SHALL BE INCIDENTAL TO THE RELATED PAY ITEM SUCH AS FOUNDATION, CONDUIT, HANDHOLE, TRENCH AND BACKFILL, ETC., AND NO EXTRA COMPENSATION SHALL BE ALLOWED. ALL ROADWAY SURFACES SUCH AS SHOULDERS, MEDIAN, SIDEWALKS, PAVEMENT, ETC. SHALL BE REPLACED IN KIND. ALL DAMAGE TO MOWED LAWNS SHALL BE REPLACED WITH AN APPROVED SOD, AND ALL DAMAGE TO UNMOWED FIELDS SHALL BE SEEDING IN ACCORDANCE WITH STANDARD SPECIFICATIONS 252 AND 250 RESPECTIVELY.

NOTE: THE TRAFFIC SIGNAL CONTROL EQUIPMENT FOR THIS PROJECT SHALL BE "ECONOLITE" TO MATCH THE ADJACENT SYSTEM.

FILE NAME = c:\projects\traffic\070027\us12_20_45.dgn	USER NAME = kenthaphixjbc	DESIGNED - BCK	REVISED -	<b>STATE OF ILLINOIS DEPARTMENT OF TRANSPORTATION</b>	<b>PROPOSED TRAFFIC SIGNAL PLAN US 12/20/45 (MANNHEIM) @ CANTERBURY ST.</b>				F.A.P. RTE. 330	SECTION 2008-006 TS	COUNTY COOK	TOTAL SHEETS 100	SHEET NO. 82
PLOT SCALE = 1/8" = 1'-0"	CHECKED - DAD	DATE -	REVISED -		SCALE: 1"=20'	SHEET NO. OF SHEETS	STA. TO STA.	FED. ROAD DIST. NO.	ILLINOIS FED. AID PROJECT	CONTRACT NO. 60E31			
PLOT DATE = 10/10/2008	DATE -	REVISED -	REVISED -										