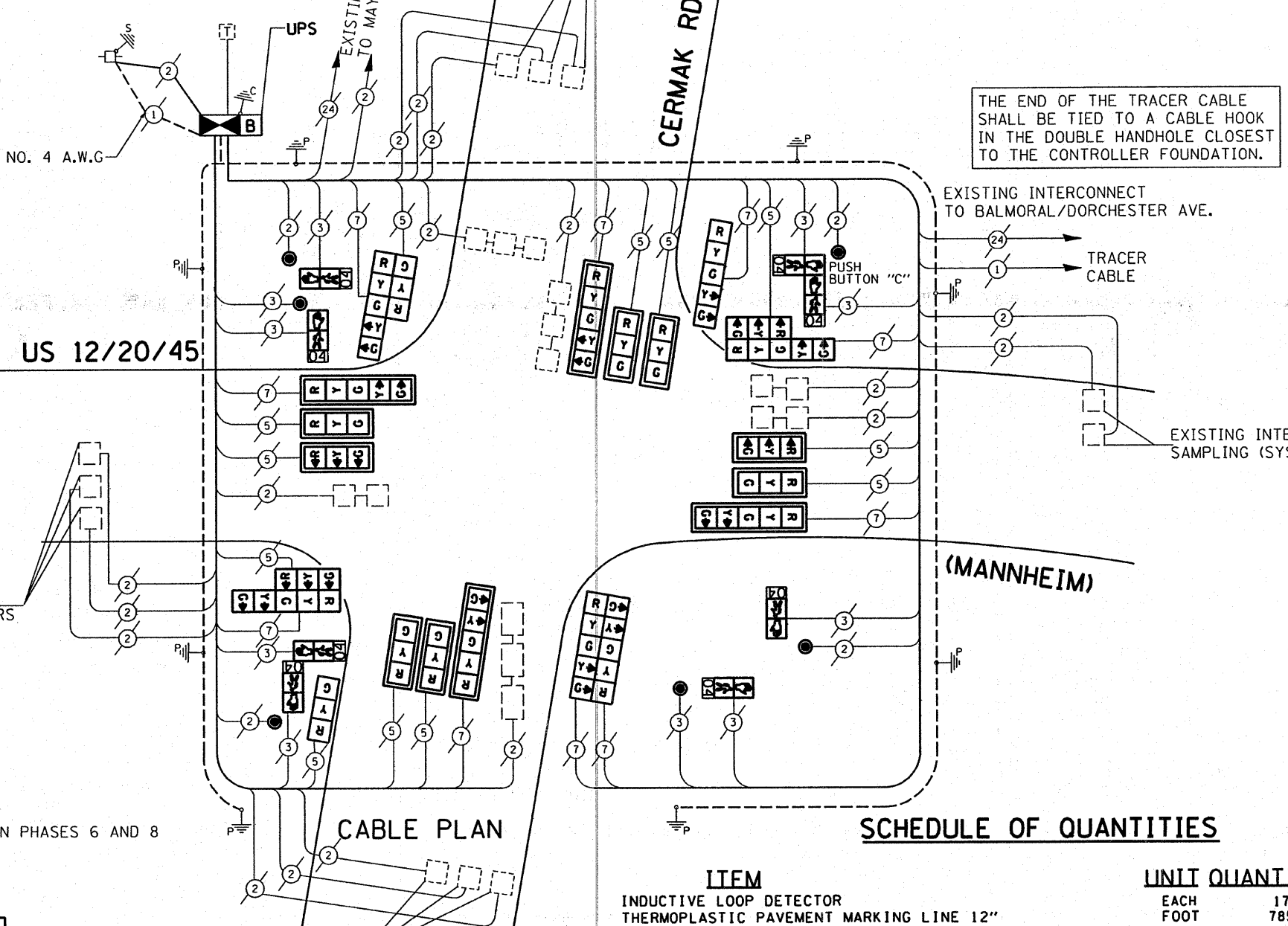


**LEGEND**  
 ○ DUAL ENTRY PHASE  
 □ SINGLE ENTRY PHASE  
 ◇ OVERLAP  
 ○ PEDESTRIAN PHASE  
 \* NUMBER REFERS TO ASSOCIATED PHASE

**PHASE DESIGNATION DIAGRAM**

OVERLAP LETTER	PERMISSIVE PHASE	PROTECTED PHASE
A =	2	+ 3
C =	6	+ 7
D =	8	+ 1



PUSH-BUTTON NOTE:  
 PUSH-BUTTON "C" SHALL PLACE A CALL IN PHASES 6 AND 8

**CABLE PLAN LEGEND**

	PROPOSED	EXISTING
CONTROLLER CABINET	[Symbol]	[Symbol]
RAILROAD CONTROL CABINET	[Symbol]	[Symbol]
SERVICE INSTALLATION, (P) POLE OR (G) GROUND MOUNT	[Symbol]	[Symbol]
TELEPHONE CONNECTION	[Symbol]	[Symbol]
GROUND ROD AT (C) CONTROLLER, (H) HANDHOLE, (P) POST, (M) MAST ARM, OR (S) SERVICE	[Symbol]	[Symbol]
FIBER OPTIC CABLE IN CONDUIT, NUMBER OF FIBERS AS NOTED	[Symbol]	[Symbol]
ELECTRIC CABLE IN CONDUIT, NO. 14, UNLESS OTHERWISE NOTED, NUMBER OF CONDUCTORS AS NOTED	[Symbol]	[Symbol]
GROUND CABLE IN CONDUIT NO. 6 COPPER (GREEN)	[Symbol]	[Symbol]
SIGNAL FACE WITH BACKPLATE, "P" INDICATES PROGRAMMED HEAD	[Symbol]	[Symbol]
12" (300mm) RED WITH 8" (200mm) YELLOW AND GREEN TRAFFIC SIGNAL FACE	[Symbol]	[Symbol]
12" (300mm) TRAFFIC SIGNAL SECTION	[Symbol]	[Symbol]
12" (300mm) PEDESTRIAN SIGNAL SECTION WITH COUNTDOWN TIMER	[Symbol]	[Symbol]
ILLUMINATED SIGN "NO LEFT TURN"	[Symbol]	[Symbol]
ILLUMINATED SIGN "NO RIGHT TURN"	[Symbol]	[Symbol]
PUSHBUTTON DETECTOR	[Symbol]	[Symbol]
DETECTOR LOOP	[Symbol]	[Symbol]
PERFORMED DETECTOR LOOP	[Symbol]	[Symbol]
MICROWAVE VEHICLE SENSOR	[Symbol]	[Symbol]
VIDEO DETECTOR	[Symbol]	[Symbol]
CLOSED CIRCUIT TV	[Symbol]	[Symbol]
EMERGENCY VEHICLE SYSTEM DETECTOR	[Symbol]	[Symbol]
CONFIRMATION BEACON	[Symbol]	[Symbol]
UNINTERRUPTIBLE POWER SUPPLY	[Symbol]	[Symbol]

**I.D.D.T TRAFFIC SIGNAL INSTALLATION ELECTRICAL SERVICE REQUIREMENTS**

TYPE	NO. LAMPS	WATTAGE INCAND.	WATTAGE LED	% OPERATION	TOTAL WATTAGE
SIGNAL (RED)	20	135	17	0.50	170.00
(YELLOW)	20	135	25	0.25	125.00
(GREEN)	20	135	15	0.25	75.50
ARROW	8	135	12	0.10	38.40
PED. SIGNAL	8	90	25	1.00	200.00
CONTROLLER	1	100	100	1.00	100.00
ILLUM. SIGN		84		0.05	
FLASHER				0.50	
<b>ENERGY COSTS TO:</b>				<b>TOTAL =</b>	<b>708.40</b>

FOUNDATION (DEPTH)	FT. (m)	CABLE SLACK	FT. (m)	VERTICAL	FT. (m)
TYPE A - POST	4 (1.2)	HANDHOLE	6.5 (2.0)	ALL FOUNDATIONS	3.5 (1.0)
D - CONTROLLER	4 (1.2)	DOUBLE HANDHOLE	13 (4.0)	MAST ARM (L) POLE	20'H-2'
E - M. ARM POLE		SIGNAL POST	2 (1.0)		16mH-0.6m=
24" (600mm)	10 (3.0)	CONTROLLER CAB.	1 (0.5)	BRACKET MOUNTED	13 (4.0)
30" (750mm)	15 (4.6)	FIBER OPTIC	13 (4.0)	PED. PUSHBUTTON	4 (1.2)
36" (900mm)	15 (4.6)	ELECTRIC SERVICE	1 (0.5)	ELECTRIC SERVICE	13.5 (4.1)
		GROUND CABLE	1 (0.5)	SERVICE TO GROUND	13.5 (4.1)
				POST MOUNTED	6 (1.8)

ENERGY SUPPLY CONTACT: DENNIS HREBY  
 PHONE: (815) 334-3313  
 COMPANY: COM. EDISON

FILE NAME = c:\projects\traffic\072027\us12\_20\_45.dgn  
 USER NAME = kanthaphixaybo  
 PLOT SCALE = 40.0000" / IN.  
 PLOT DATE = 10/10/2008

DESIGNED - BCK  
 DRAWN - BCK  
 CHECKED - DAD  
 DATE -

REVISED -  
 REVISED -  
 REVISED -  
 REVISED -

**SCHEDULE OF QUANTITIES**

ITEM	UNIT	QUANTITY
INDUCTIVE LOOP DETECTOR	EACH	17
THERMOPLASTIC PAVEMENT MARKING LINE 12"	FOOT	785
THERMOPLASTIC PAVEMENT MARKING LINE 24"	FOOT	235
THERMOPLASTIC PAVEMENT MARKING REMOVAL	FOOT	1125
MAINTENANCE OF EXISTING TRAFFIC SIGNAL EQUIPMENT	EACH	1
FULL-ACTUATED CONTROLLER AND TYPE V CABINET (SPECIAL)	EACH	1
MASTER CONTROLLER (SPECIAL)	EACH	1
TRAFFIC SIGNAL BACKPLATE, LOUVERED, ALUMINUM	EACH	12
PEDESTRIAN PUSH-BUTTON	EACH	6
REMOVE EXISTING TRAFFIC SIGNAL EQUIPMENT	EACH	1
SIGNAL HEAD, L.E.D. 1-FACE, 3 SECTION, MAST ARM MNTD.	EACH	8
SIGNAL HEAD, L.E.D. 1-FACE, 5 SECTION, MAST ARM MNTD.	EACH	4
SIGNAL HEAD, L.E.D. 1-FACE, 5 SECTION, BRKT. MNTD.	EACH	1
SIGNAL HEAD, L.E.D. 1-FACE, 3 SECTION, BRKT. MNTD.	EACH	1
SIGNAL HEAD, L.E.D. 2-FACE, 5 SECTION, BRKT. MNTD.	EACH	1
SIGNAL HEAD, L.E.D. 2-FACE, 1-3, 1-5 SECTION, BRKT. MNTD.	EACH	3
PEDESTRIAN SIGNAL HEAD, L.E.D., 1-FACE, BRKT. MTD. WITH COUNTDOWN TIMER	EACH	4
PEDESTRIAN SIGNAL HEAD, L.E.D., 2-FACE, BRKT. MTD. WITH COUNTDOWN TIMER	EACH	2
UNINTERRUPTIBLE POWER SUPPLY	EACH	1

**NOTE:**  
 THE TRAFFIC SIGNAL CONTROL EQUIPMENT FOR THIS PROJECT SHALL BE "ECONOLITE" TO MATCH THE ADJACENT SYSTEM.

STATE OF ILLINOIS  
 DEPARTMENT OF TRANSPORTATION

PROPOSED CABLE PLAN  
 US 12/20/45 (MANNHEIM) @ CERMAK RD.

SCALE: SHEET NO. OF SHEETS STA. TO STA.

F.A.P. RTE.	SECTION	COUNTY	TOTAL SHEETS	SHEET NO.
330	2008-006 TS	COOK	100	91
CONTRACT NO. 60E31				
FED. ROAD DIST. NO. ILLINOIS FED. AID PROJECT				