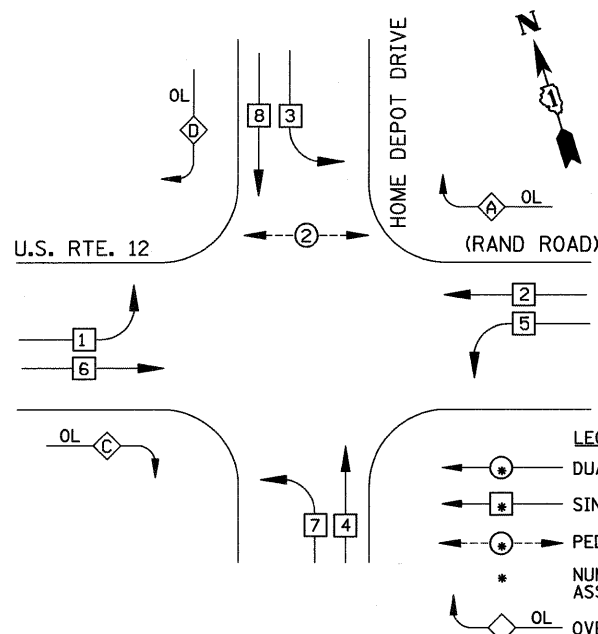


**CONTROLLER SEQUENCE**

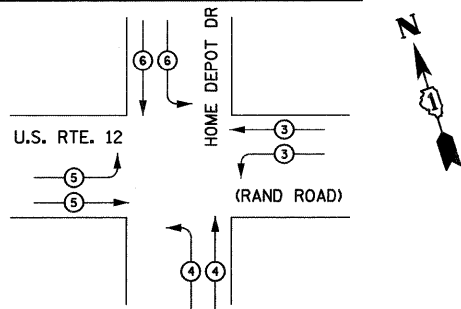


**PHASE DESIGNATION DIAGRAM**

**RIGHT TURN OVERLAP DESIGNATION**

OVERLAP LETTER	PERMISSIVE PHASE	PROTECTED PHASE
A	2	3
C	6	7
D	8	1

**EMERGENCY VEHICLE PREEMPTION SEQUENCE**



EMERGENCY VEHICLE PREEMPTOR	3	4	5	6
MOVEMENT	←	←	←	←

**CABLE PLAN LEGEND**

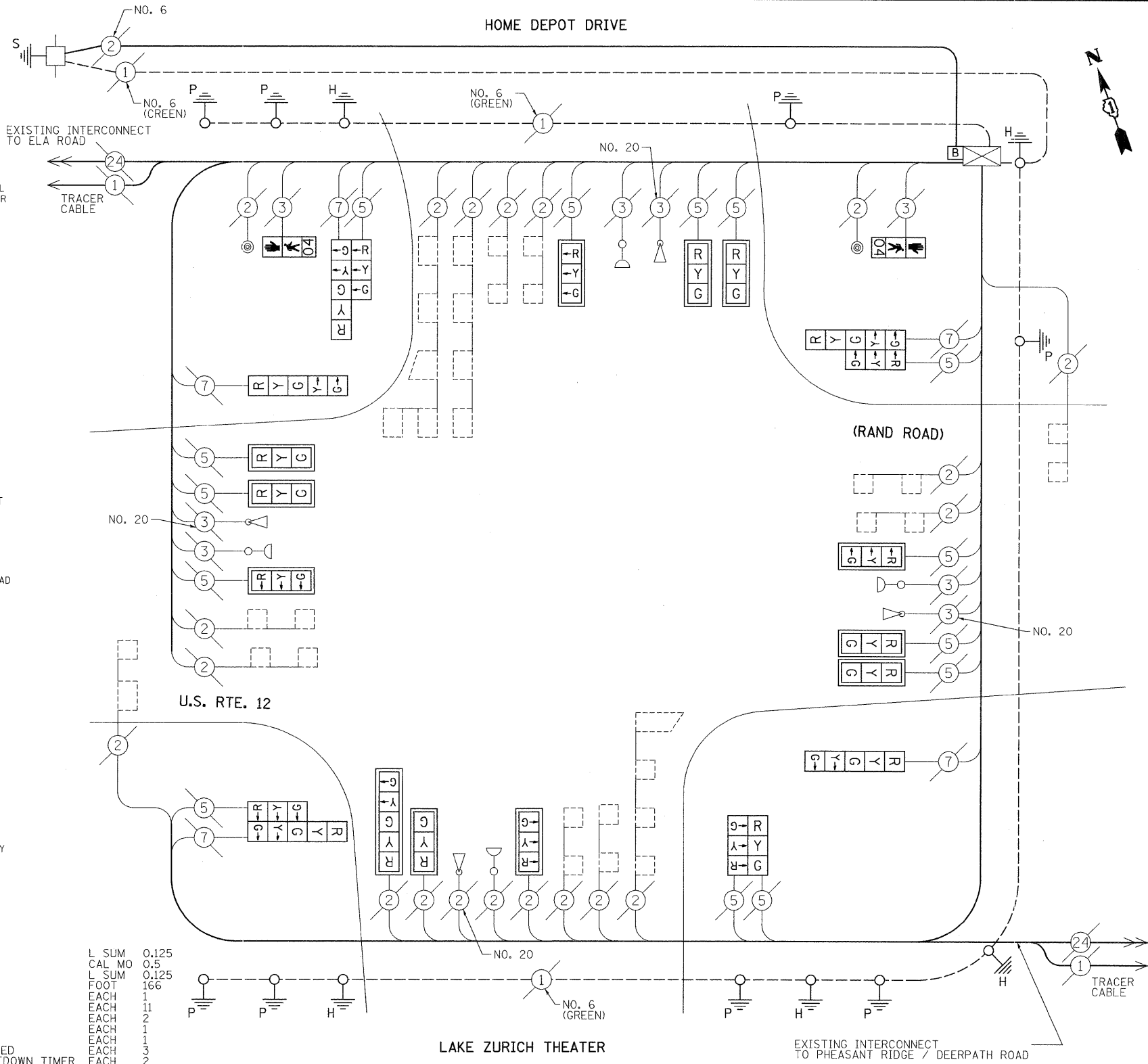
- |                 |                 |   |
|-----------------|-----------------|---|
| <b>EXISTING</b> | <b>PROPOSED</b> |   |
|                 |                 | 8" (200mm) TRAFFIC SIGNAL SECTION   |
|                 |                 | 12" (300mm) TRAFFIC SIGNAL SECTION  |
|                 |                 | 12" (300mm) PEDESTRIAN SIGNAL SECTION   |
|                 |                 | 12" (300mm) PEDESTRIAN SIGNAL SECTION WITH COUNTDOWN TIMER  |
|                 |                 | CONTROLLER CABINET  |
|                 |                 | SERVICE INSTALLATION  |
|                 |                 | TELEPHONE CONNECTION  |
|                 |                 | MAGNETIC DETECTOR   |
|                 |                 | EMERGENCY VEHICLE LIGHT DETECTOR  |
|                 |                 | CONFIRMATION BEACON   |
|                 |                 | PUSH-BUTTON DETECTOR  |
|                 |                 | VEHICLE DETECTOR, INDUCTION LOOP  |
|                 |                 | ① GROUND CABLE IN CONDUIT NO. 6 SOLID COPPER (GREEN)  |
|                 |                 | ②④ FIBER OPTIC CABLE IN CONDUIT NO. 62.5/125 2-MM12F SM12F  |
|                 |                 | R<br>Y<br>G<br>-<br>Y<br>-<br>G<br>C<br>SIGNAL FACE WITH BACKPLATE, "P" INDICATES PROGRAMMED HEAD |
|                 |                 | Railroad Control Cabinet  |
|                 |                 | ILLUMINATED SIGN "NO LEFT TURN"   |
|                 |                 | ILLUMINATED SIGN "NO RIGHT TURN"  |
|                 |                 | G GROUND ROD AT HANDHOLE (H), DOUBLE HANDHOLE (H), OR CONTROLLER (C)                              |
|                 |                 | P GROUND ROD AT POST (P), OR MAST ARM POLE (MA)   |
|                 |                 | S GROUND ROD AT ELECTRIC SERVICE INSTALLATION   |
|                 |                 | B UNINTERRUPTIBLE POWER SUPPLY  |

**SCHEDULE OF QUANTITIES**

MOBILIZATION ENGINEERS FIELD OFFICE, TYPE A TRAFFIC CONTROL AND PROTECTION, STANDARD 701701 THERMOPLASTIC PAVEMENT MARKING - LINE 12" MAINTENANCE OF EXISTING TRAFFIC SIGNAL INSTALLATION SIGNAL HEAD, LED, 1-FACE, 3-SECTION, MAST-ARM MOUNTED SIGNAL HEAD, LED, 1-FACE, 5-SECTION, BRACKET MOUNTED SIGNAL HEAD, LED, 1-FACE, 5-SECTION, MAST-ARM MOUNTED SIGNAL HEAD, LED, 2-FACE, 3-SECTION, BRACKET MOUNTED SIGNAL HEAD, LED, 2-FACE, 1-3 SECTION, 1-5 SECTION, BRACKET MOUNTED PEDESTRIAN SIGNAL HEAD, L.E.D., 1-FACE, BRACKET MOUNTED WITH COUNTDOWN TIMER TRAFFIC SIGNAL BACKPLATE, LOUVERED, ALUMINUM REMOVE EXISTING TRAFFIC SIGNAL EQUIPMENT TEMPORARY INFORMATION SIGNING RE-OPTIMIZE TRAFFIC SIGNAL SYSTEM - LEVEL II UNINTERRUPTIBLE POWER SUPPLY

FOUNDATION (DEPTH)	FT. (m)	CABLE SLACK	FT. (m)	VERTICAL	FT. (m)
TYPE A - POST	4 (1.2)	HANDHOLE	6.5 (2.0)	ALL FOUNDATIONS	3.5 (1.0)
D - CONTROLLER	4 (1.2)	DOUBLE HANDHOLE	13 (4.0)	MAST ARM (L) POLE	( )
E - M. ARM POLE		SIGNAL POST	2 (1.0)	BRACKET MOUNTED	13 (4.0)
		24" (600mm)	10 (3.0)	CONTROLLER CAB.	1 (0.5)
		30" (750mm)	15 (4.6)	FIBER OPTIC	13 (4.0)
				ELECTRIC SERVICE	1 (0.5)
				GROUND CABLE	1 (0.5)
				POST MOUNTED	6 (1.6)

L SUM	0.125
CAL MO	0.5
L SUM	0.125
FOOT	166
EACH	1
EACH	11
EACH	2
EACH	1
EACH	1
EACH	3
EACH	2
EACH	12
EACH	1
SO FT	12.85
EACH	1
EACH	1



**CABLE PLAN**

I.D.O.T TRAFFIC SIGNAL INSTALLATION ELECTRICAL SERVICE REQUIREMENTS					TOTAL WATTAGE
TYPE	NO. LAMPS	WATTAGE INCAND. LED	%OPERATION		
SIGNAL (RED)	22	135 17	0.50		187
(YELLOW)	22	135 25	0.25		137.5
(GREEN)	22	135 15	0.25		82.5
ARROW	12	135 12	0.10		14.4
PED. SIGNAL	2	90 25	1.00		50.00
CONTROLLER	1	100 100	1.00		100.00
ILLUM. SIGN			0.05		
FLASHER			0.50		
ENERGY COSTS TO:				TOTAL =	571.4
VILLAGE OF LAKE ZURICH 70 EAST MAIN STREET LAKE ZURICH, IL 60047					
ENERGY SUPPLY CONTACT:		DOTTIE PROSEN			
PHONE:		(847) 816-5323			
COMPANY:		COMED			

FILE NAME =	USER NAME = JLA	DESIGNED - KK	REVISED -
J:\MICROST\352856\ 18-HOMEDEPOT CAB.DGN		DRAWN - JLA	REVISED -
	PLOT SCALE = 1"=20'	CHECKED - BPT	REVISED -
	PLOT DATE = 12-10-08	DATE - 12-10-08	REVISED -

**STATE OF ILLINOIS DEPARTMENT OF TRANSPORTATION**

**SCHEDULE OF QUANTITIES, CABLE PLAN AND PHASE DESIGNATION DIAGRAM U.S. ROUTE 12 (RAND ROAD) AT HOME DEPOT DRIVE**

PREPARED BY:  
**CEMCON, Ltd.**  
 Consulting Engineers, Land Surveyors & Planners  
 2280 White Oak Circle, Suite 100  
 Aurora, Illinois 60504-9675  
 Ph: 630.862.2100 Fax: 630.862.2199  
 E-Mail: codd@cemcon.com Website: www.cemcon.com

F.A.P. RTE.	SECTION	COUNTY	TOTAL SHEETS	SHEET NO.
334	2008-069 TS	LAKE	26	19

CONTRACT NO. 60F62  
 FED. ROAD DIST. NO. ILLINOIS FED. AID PROJECT