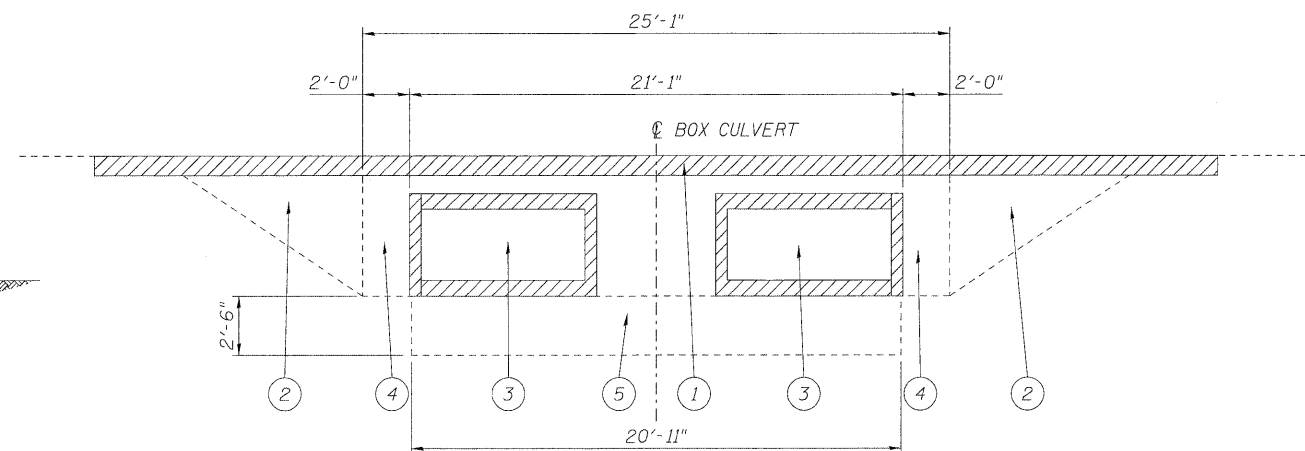
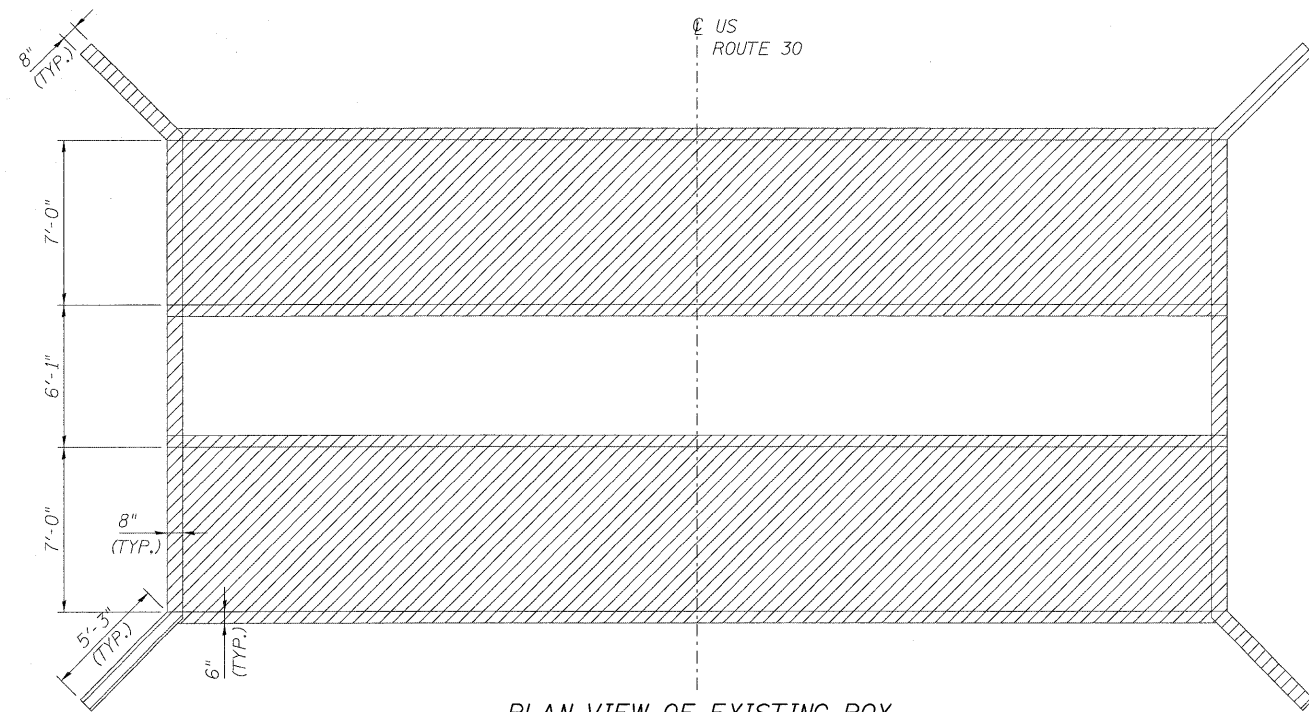


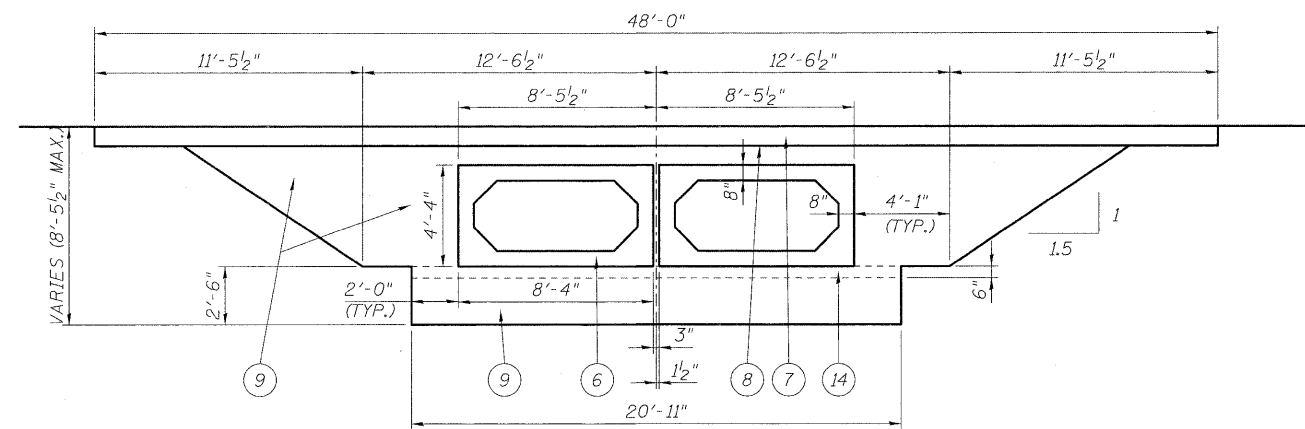
EXISTING CULVERT SECTION LOOKING NORTH  
NO SCALE



EXISTING BOX CULVERT SECTION LOOKING WEST  
NO SCALE



PLAN VIEW OF EXISTING BOX  
NO SCALE



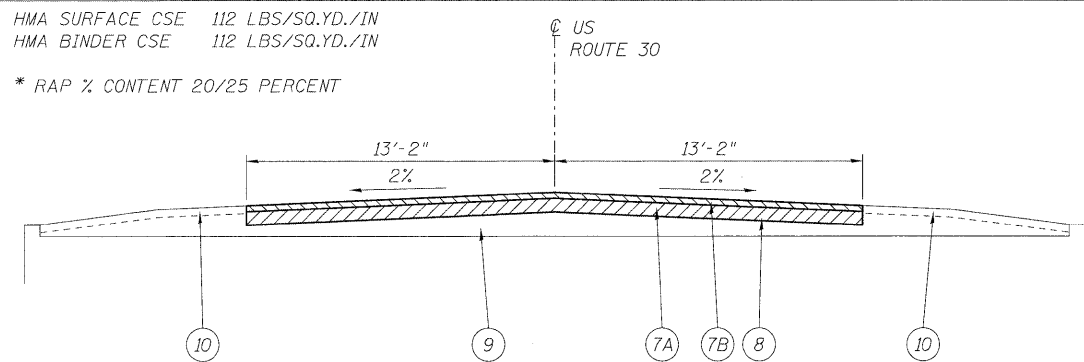
PROPOSED BOX CULVERT SECTION LOOKING WEST  
NO SCALE

CLASS D PATCHES

APPLICATION	MIXTURE TYPE	AC TYPE	AIR VOIDS
US RT 30 THRU-LANES	HMA SURFACE COURSE MIX D, N70, (IL-9.5mm) WITH REQUIREMENTS	PG 64-22/58-22	4% @ 70 GYR.
US RT 30 THRU-LANES	HMA BINDER COURSE, IL-19.0, N70 WITH REQUIREMENTS	PG 64-22*/58-22	4% @ 70 GYR.

HMA SURFACE CSE 112 LBS/SQ.YD./IN  
HMA BINDER CSE 112 LBS/SQ.YD./IN

\* RAP % CONTENT 20/25 PERCENT



PROPOSED ROADWAY SECTION  
NO SCALE

LEGEND

- ① PAVEMENT REMOVAL
- ② EARTH EXCAVATION
- ③ REMOVAL OF EXISTING STRUCTURES
- ④ STRUCTURE EXCAVATION
- ⑤ REMOVAL AND DISPOSAL OF UNSUITABLE MATERIAL
- ⑥ PRECAST CONCRETE BOX CULVERT 7'x3'
- ⑦A HMA BINDER COURSE IL-19mm, N70, 8 1/2" (IN 3 LIFTS)
- ⑦B HMA SURFACE COURSE MIX D, N70, 1 1/2"
- ⑧ BITUMINOUS MATERIALS (PRIME COAT)
- ⑨ COARSE AGGREGATE BACKFILL (SPECIAL)
- ⑩ COMPOST FURNISH AND PLACE 4"
- ⑪ TEMPORARY CONCRETE BARRIER
- ⑫ PAVEMENT MARKING TAPE, TYPE III, 4" WHITE
- ⑬ DRUM WITH STEADY BURNING LIGHT
- ⑭ CA 7

NOTE:

1. THE INSTALLATION OF THE PRECAST CONCRETE BOX CULVERT WILL BE COMPLETED IN STAGES. CLASS D PATCHES, TYPE IV, 10" TEMPORARY PATCHES WILL BE PLACED AS NECESSARY TO OPEN THE ROAD TO TRAFFIC, OR AS DIRECTED BY THE ENGINEER.
2. EXCAVATION LIMITS VARY.
3. HMA BINDER AND SURFACE COURSE TO BE PAID FOR AS CLASS D PATCHES, TYPE IV, 10" IN SQ.YD.
4. THE COST 6" OF CA 7 UNDER CULVERT SHALL BE INCLUDED IN THE PRECAST CONCRETE BOX CULVERT 7'x3' ITEM.