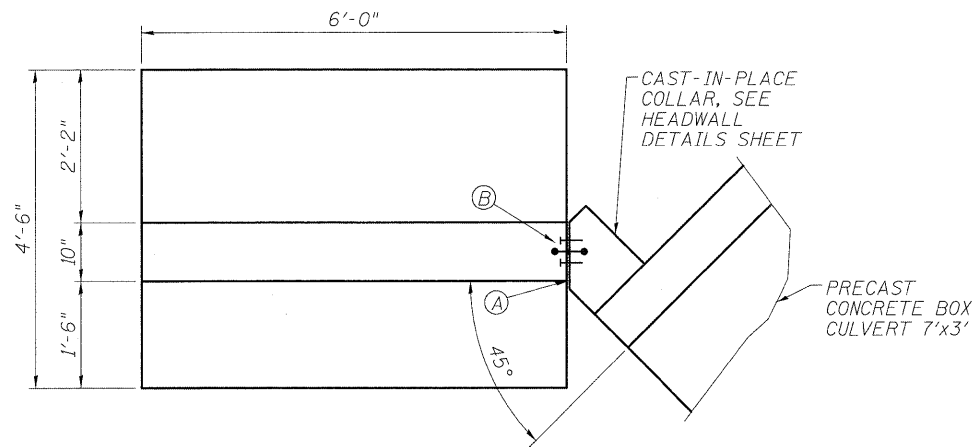


(A) 1/2" PREMOULDED JOINT FILLER, INSTALL W/ 2 COLUMNS OF CONC. NAILS (FLAT HD. C.S.), 1" LONG, AT 12" CTS., VERTICAL.

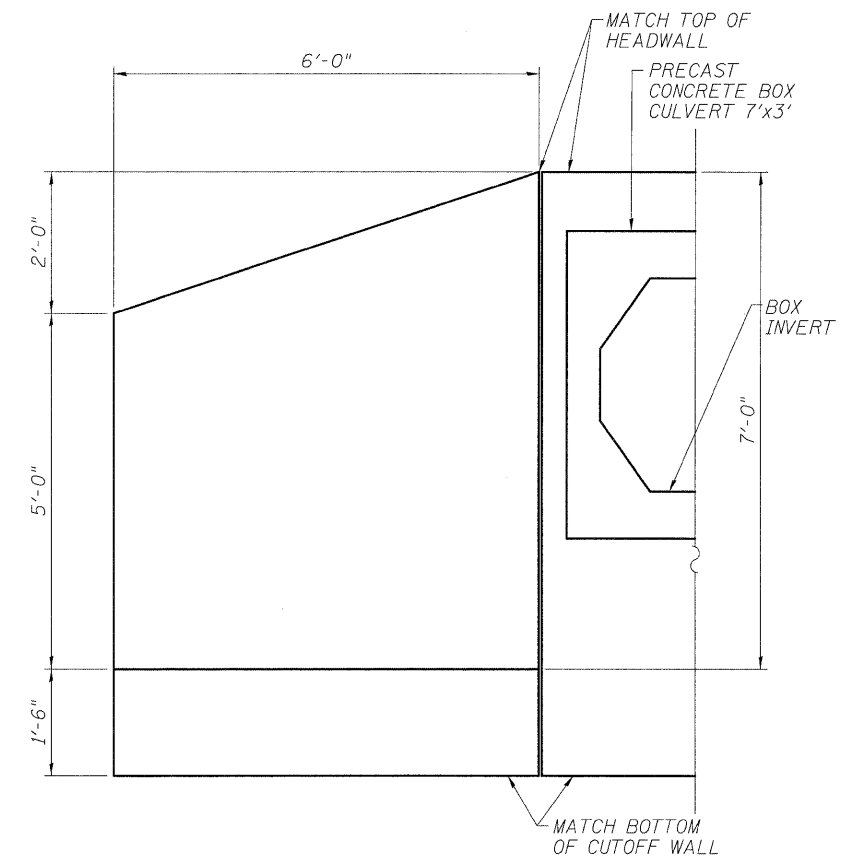
(B) 6" HOLLOW BULB TYPE NONMETALLIC WATER SEAL (6" FROM TOP OF WALL TO TOP OF FOOTING).



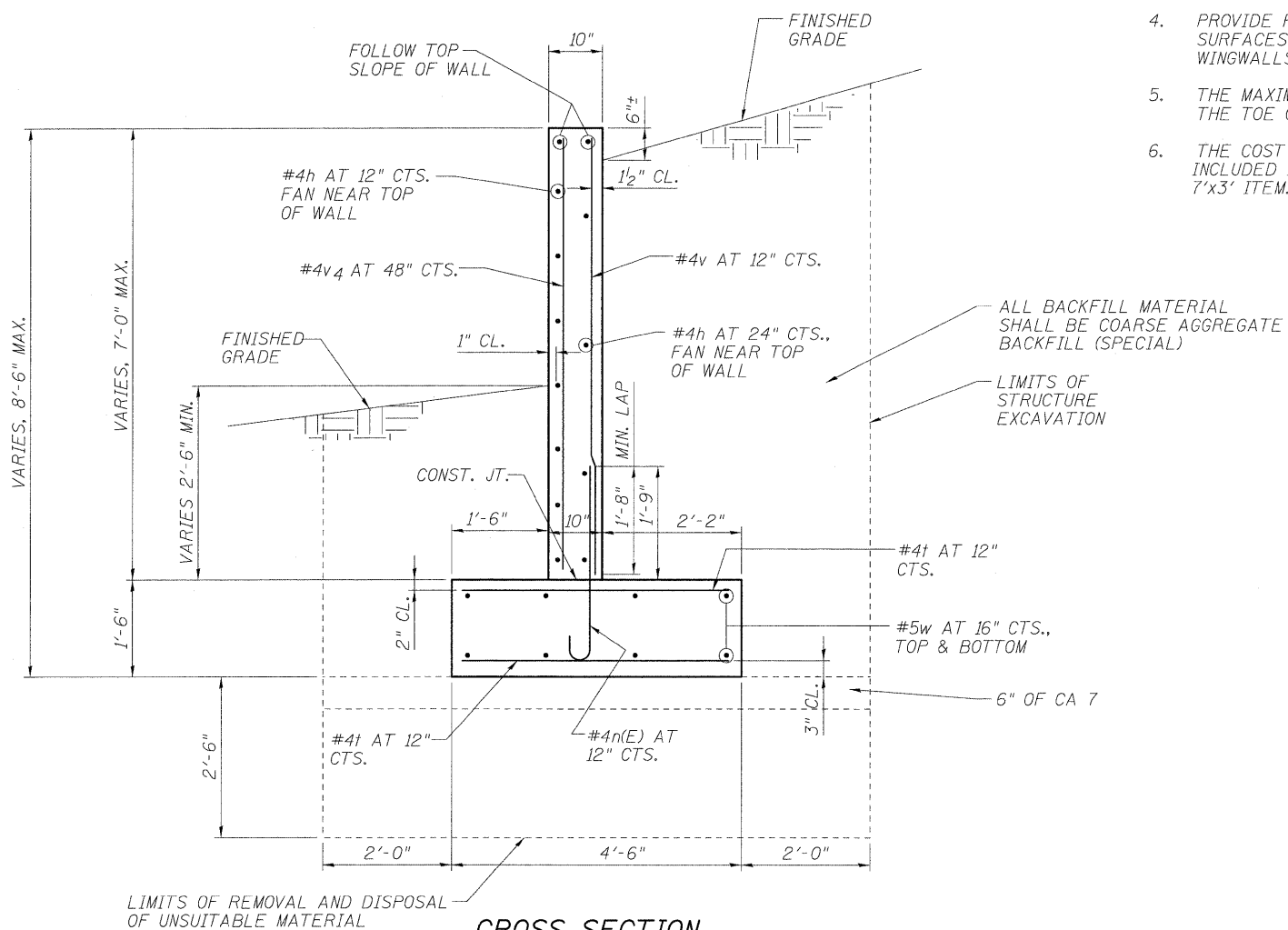
PLAN

NOTES

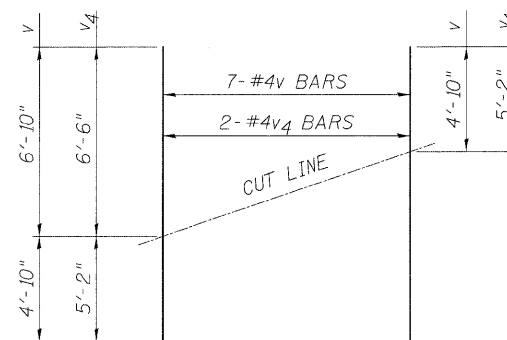
1. ALL EDGES SHALL HAVE STANDARD 3/4" CHAMFERS, EXCEPT AS NOTED.
2. REINFORCEMENT BARS DESIGNATED (E) SHALL BE EPOXY COATED.
3. SEE HEADWALL DETAILS SHEET FOR BILL OF MATERIAL.
4. PROVIDE PROTECTIVE COAT ON TOP HORIZONTAL SURFACES AND TOP 12" ON INSIDE FACES OF WINGWALLS.
5. THE MAXIMUM DESIGN SOIL BEARING PRESSURE AT THE TOE OF THE WINGWALL FOOTING IS 2500 PSF.
6. THE COST 6" OF CA 7 UNDER WINGWALL SHALL BE INCLUDED IN THE PRECAST CONCRETE BOX CULVERT 7'x3' ITEM.



ELEVATION



CROSS SECTION



FIELD CUTTING DIAGRAM

Order v & v4 bars full length. Cut as shown and use remainder of bars in opposite wingwall.