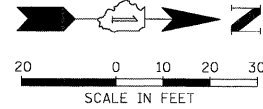
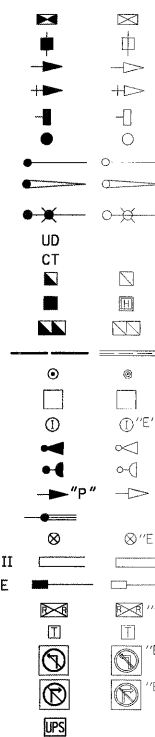


TRAFFIC SIGNAL LEGEND

- CONTROLLER  
 SERVICE INSTALLATION  
 SIGNAL HEAD  
 SIGNAL HEAD WITH BACKPLATE  
 SIGNAL HEAD, PEDESTRIAN  
 SIGNAL POST  
 MAST ARM ASSEMBLY AND POLE, STEEL  
 MAST ARM ASSEMBLY AND POLE, ALUMINUM  
 COMBINATION MAST ARM ASSEMBLY AND POLE, STEEL WITH LUMINAIRE  
 UNIT DUCT  
 COMMON TRENCH  
 HANDHOLE  
 HEAVY DUTY HANDHOLE  
 DOUBLE HANDHOLE  
 G.S. CONDUIT IN TRENCH (T) OR PUSHED (P)  
 PEDESTRIAN PUSHBUTTON DETECTOR  
 DETECTOR LOOP  
 CAST IRON JUNCTION BOX  
 EMERGENCY VEHICLE LIGHT DETECTOR  
 CONFIRMATION BEACON  
 SIGNAL HEAD OPTICALLY PROGRAMMED  
 CONDUIT SPLICE  
 WOOD POLE  
 RACEWAY FOR MAGNETIC DETECTOR, TYPE I OR TYPE II  
 VEHICLE DETECTOR, NON COMPENSATED MAGNETIC TYPE  
 RAILROAD CONTROL CABINET  
 TELEPHONE CONNECTION  
 ILLUMINATED SIGN  
 "NO LEFT TURN"  
 ILLUMINATED SIGN  
 "NO RIGHT TURN"  
 UNINTERRUPTIBLE POWER SUPPLY

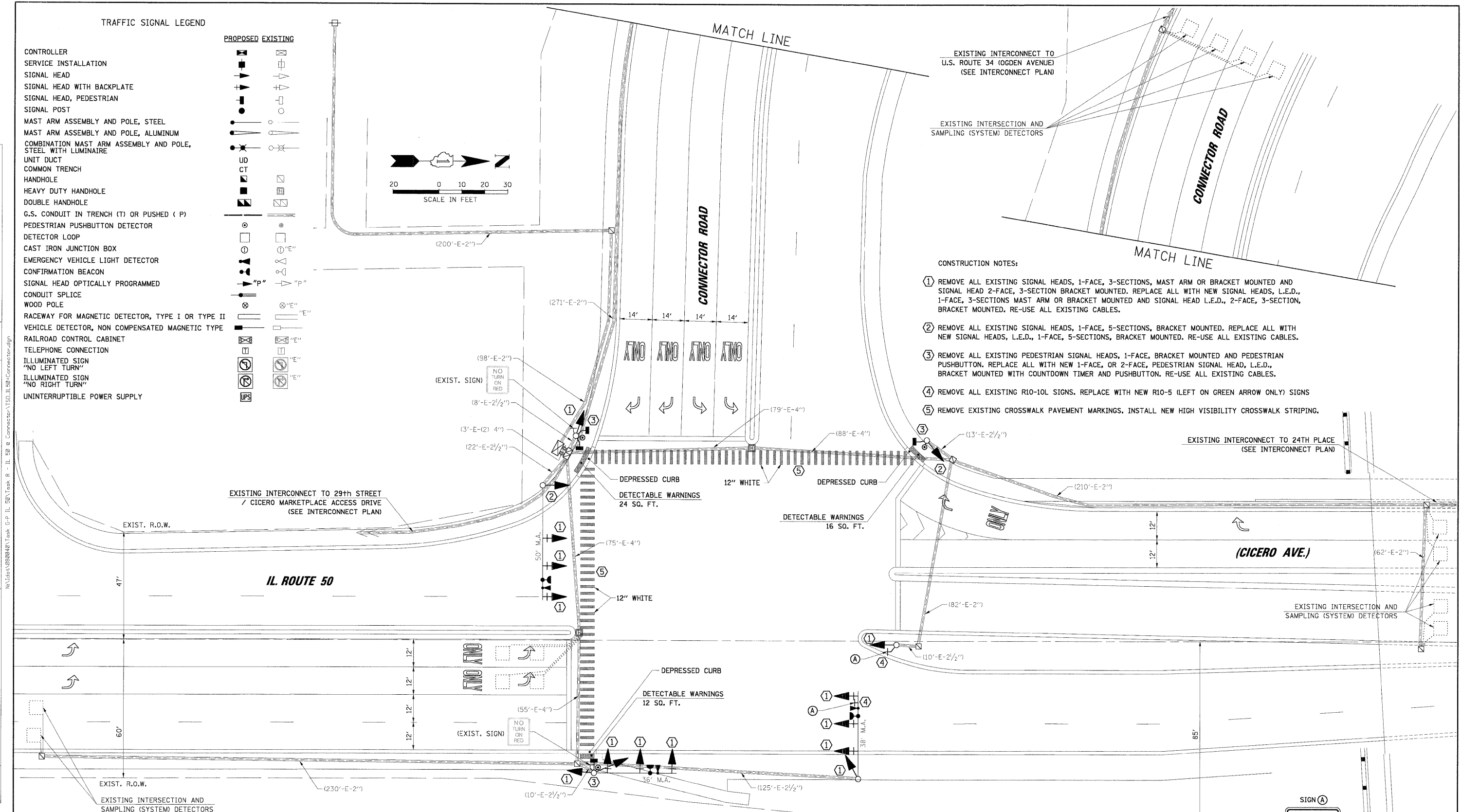
PROPOSED EXISTING



|                             |    |                             |    |
|-----------------------------|----|-----------------------------|----|
| DATE                        | BY | DATE                        | BY |
|                             |    |                             |    |
| SURVEYED                    |    | SURVEYED                    |    |
| GRADES CHECKED              |    | GRADES CHECKED              |    |
| E.M. NOTED                  |    | E.M. NOTED                  |    |
| STRUCTURE NOTATIONS CHECKED |    | STRUCTURE NOTATIONS CHECKED |    |
| NO.                         |    | NO.                         |    |
| PLAN                        |    | PLAN                        |    |
| NOTE BOOK                   |    | NOTE BOOK                   |    |
| ALIGNED CHECKED             |    | ALIGNED CHECKED             |    |
| PT. OF WAY CHECKED          |    | PT. OF WAY CHECKED          |    |
| ROAD FILE NAME              |    | ROAD FILE NAME              |    |
| NO.                         |    | NO.                         |    |

CHRISTOPHER B. BURKE ENGINEERING LTD.  
 3575 West Higgins Road, Suite 600  
 Chicago, Illinois 60638  
 (847) 821-0500

FILE NAME =  
 USER NAME = FPACIONE  
 DESIGNED - ABR  
 DRAWN - FPB  
 CHECKED - MJT  
 DATE -



- CONSTRUCTION NOTES:
- REMOVE ALL EXISTING SIGNAL HEADS, 1-FACE, 3-SECTIONS, MAST ARM OR BRACKET MOUNTED AND SIGNAL HEAD 2-FACE, 3-SECTION BRACKET MOUNTED. REPLACE ALL WITH NEW SIGNAL HEADS, L.E.D., 1-FACE, 3-SECTIONS MAST ARM OR BRACKET MOUNTED AND SIGNAL HEAD L.E.D., 2-FACE, 3-SECTION, BRACKET MOUNTED. RE-USE ALL EXISTING CABLES.
  - REMOVE ALL EXISTING SIGNAL HEADS, 1-FACE, 5-SECTIONS, BRACKET MOUNTED. REPLACE ALL WITH NEW SIGNAL HEADS, L.E.D., 1-FACE, 5-SECTIONS, BRACKET MOUNTED. RE-USE ALL EXISTING CABLES.
  - REMOVE ALL EXISTING PEDESTRIAN SIGNAL HEADS, 1-FACE, BRACKET MOUNTED AND PEDESTRIAN PUSHBUTTON. REPLACE ALL WITH NEW 1-FACE, OR 2-FACE, PEDESTRIAN SIGNAL HEAD, L.E.D., BRACKET MOUNTED WITH COUNTDOWN TIMER AND PUSHBUTTON. RE-USE ALL EXISTING CABLES.
  - REMOVE ALL EXISTING R10-10L SIGNS. REPLACE WITH NEW R10-5 (LEFT ON GREEN ARROW ONLY) SIGNS
  - REMOVE EXISTING CROSSWALK PAVEMENT MARKINGS. INSTALL NEW HIGH VISIBILITY CROSSWALK STRIPING.

RESTORATION OF WORK AREA. RESTORATION OF THE TRAFFIC SIGNAL WORK AREA SHALL BE INCIDENTAL TO THE RELATED PAY ITEM SUCH AS FOUNDATION, CONDUIT, HANDHOLE, TRENCH AND BACKFILL, ETC., AND NO EXTRA COMPENSATION SHALL BE ALLOWED. ALL ROADWAY SURFACES SUCH AS SHOULDERS, MEDIANS, SIDEWALKS, PAVEMENT, ETC. SHALL BE REPLACED IN KIND. ALL DAMAGE TO MOWED LAWNS SHALL BE REPLACED WITH AN APPROVED SOD, AND ALL DAMAGE TO UNMOWED FIELDS SHALL BE SEEDED IN ACCORDANCE WITH STANDARD SPECIFICATIONS 252 AND 250 RESPECTIVELY.

- THE FOLLOWING ITEMS SHALL BE REMOVED BY THE CONTRACTOR AND SHALL BE DISPOSED OF BY THEM OUTSIDE THE RIGHT-OF-WAY AT THEIR EXPENSE. THE SALVAGE VALUE OF THE REMOVED EQUIPMENT SHALL BE REFLECTED IN THE CONTRACT BID PRICE.
- |    |      |                                |
|----|------|--------------------------------|
| 14 | EACH | SIGNAL HEAD, 1-FACE, 3-SECTION |
| 2  | EACH | SIGNAL HEAD, 1-FACE, 5-SECTION |
| 4  | EACH | PEDESTRIAN SIGNAL HEAD         |
| 4  | EACH | PEDESTRIAN PUSH-BUTTON         |



|                   |                         |                |           |                                                   |                     |                                                                                                        |                    |                     |                           |             |                 |              |
|-------------------|-------------------------|----------------|-----------|---------------------------------------------------|---------------------|--------------------------------------------------------------------------------------------------------|--------------------|---------------------|---------------------------|-------------|-----------------|--------------|
| FILE NAME =       | USER NAME = FPACIONE    | DESIGNED - ABR | REVISED - | STATE OF ILLINOIS<br>DEPARTMENT OF TRANSPORTATION |                     | TRAFFIC SIGNAL MODERNIZATION PLAN<br>IL. ROUTE 50 (CICERO AVE.) AND CONNECTOR ROAD<br>CICERO, ILLINOIS |                    | F.A.P. RTE. 350     | SECTION 2008-080-1        | COUNTY COOK | TOTAL SHEETS 76 | SHEET NO. 16 |
| PLLOT SCALE = 20' | PLLOT DATE = 12/10/2008 | CHECKED - MJT  | REVISED - | SCALE: 1"= 20'                                    | SHEET NO. OF SHEETS | STA. TO STA.                                                                                           | CONTRACT NO. 60F82 |                     |                           |             |                 |              |
|                   |                         |                |           |                                                   |                     |                                                                                                        |                    | FED. ROAD DIST. NO. | ILLINOIS FED. AID PROJECT |             |                 |              |