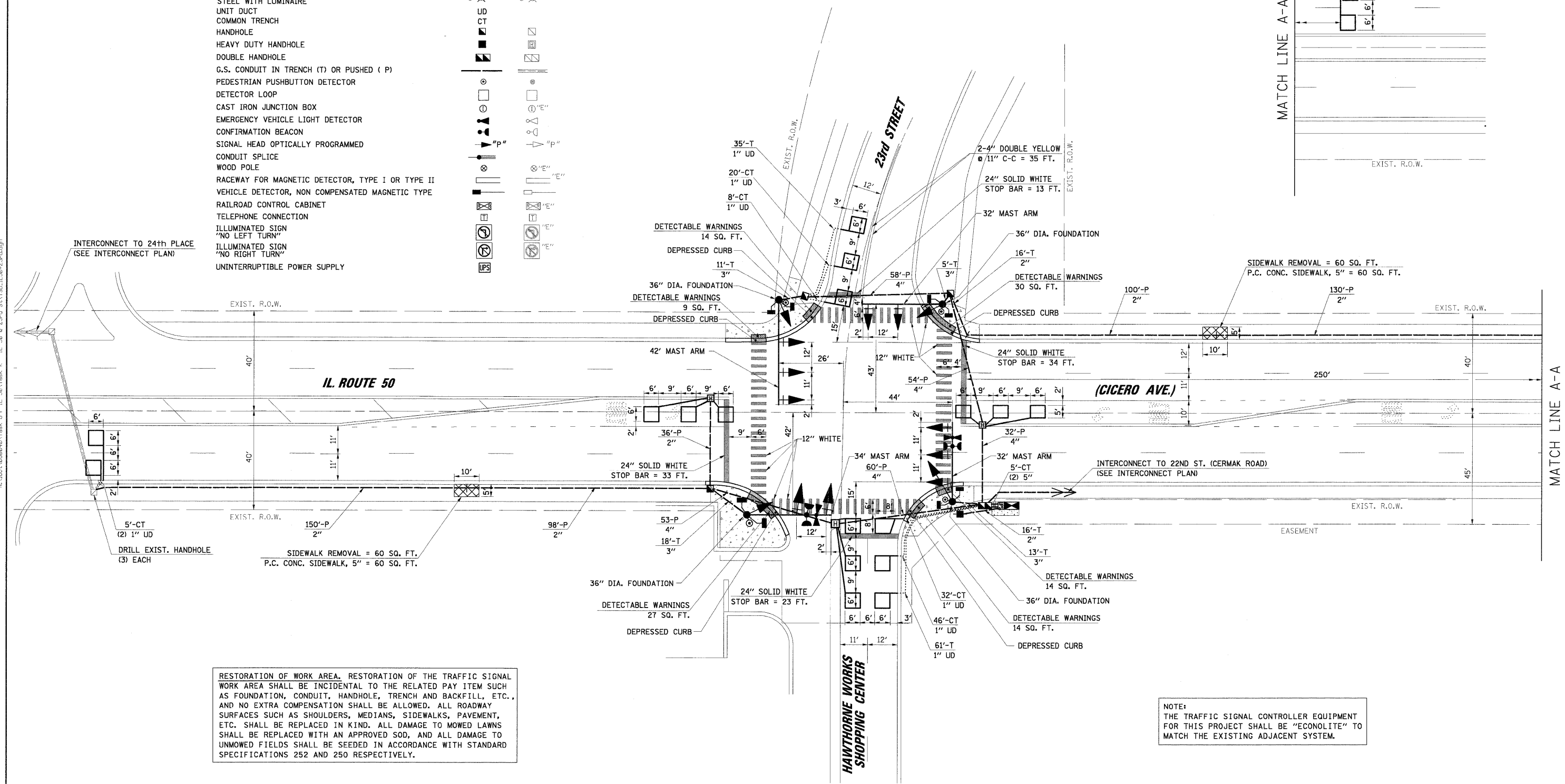
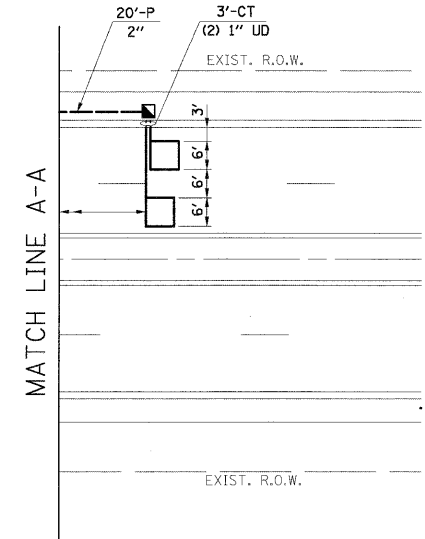
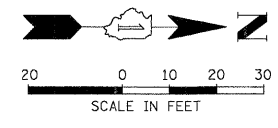


SURVEYED BY: [] DATE: []
 ALIGNED BY: [] DATE: []
 CHECKED BY: [] DATE: []
 NO. OF WAY CHECKED: []
 CAD FILE NAME: []
 PLAN NO.: []
 NOTE BOOK NO.: []
 SURVEYED BY: [] DATE: []
 GRADES CHECKED BY: [] DATE: []
 STRUCTURE NOTATIONS CHECKED BY: [] DATE: []
 PROFILE NO.: []
 NOTE BOOK NO.: []
 STRUCTURE NOTATIONS CHECKED BY: [] DATE: []

CHRISTOPHER B. BURKE ENGINEERING LTD.
 9575 West Higgins Road, Suite 600
 Rosemont, Illinois 60018
 (847) 823-0500

TRAFFIC SIGNAL LEGEND

- | | | |
|--|--|--|
| CONTROLLER | | |
| SERVICE INSTALLATION | | |
| SIGNAL HEAD | | |
| SIGNAL HEAD WITH BACKPLATE | | |
| SIGNAL HEAD, PEDESTRIAN | | |
| SIGNAL POST | | |
| MAST ARM ASSEMBLY AND POLE, STEEL | | |
| MAST ARM ASSEMBLY AND POLE, ALUMINUM | | |
| COMBINATION MAST ARM ASSEMBLY AND POLE, STEEL WITH LUMINAIRE | | |
| UNIT DUCT | | |
| COMMON TRENCH | | |
| HANDHOLE | | |
| HEAVY DUTY HANDHOLE | | |
| DOUBLE HANDHOLE | | |
| G.S. CONDUIT IN TRENCH (T) OR PUSHED (P) | | |
| PEDESTRIAN PUSHBUTTON DETECTOR | | |
| DETECTOR LOOP | | |
| CAST IRON JUNCTION BOX | | |
| EMERGENCY VEHICLE LIGHT DETECTOR | | |
| CONFIRMATION BEACON | | |
| SIGNAL HEAD OPTICALLY PROGRAMMED | | |
| CONDUIT SPLICE | | |
| WOOD POLE | | |
| RACEWAY FOR MAGNETIC DETECTOR, TYPE I OR TYPE II | | |
| VEHICLE DETECTOR, NON COMPENSATED MAGNETIC TYPE | | |
| RAILROAD CONTROL CABINET | | |
| TELEPHONE CONNECTION | | |
| ILLUMINATED SIGN "NO LEFT TURN" | | |
| ILLUMINATED SIGN "NO RIGHT TURN" | | |
| UNINTERRUPTIBLE POWER SUPPLY | | |



RESTORATION OF WORK AREA. RESTORATION OF THE TRAFFIC SIGNAL WORK AREA SHALL BE INCIDENTAL TO THE RELATED PAY ITEM SUCH AS FOUNDATION, CONDUIT, HANDHOLE, TRENCH AND BACKFILL, ETC., AND NO EXTRA COMPENSATION SHALL BE ALLOWED. ALL ROADWAY SURFACES SUCH AS SHOULDERS, MEDIANS, SIDEWALKS, PAVEMENT, ETC. SHALL BE REPLACED IN KIND. ALL DAMAGE TO MOWED LAWNS SHALL BE REPLACED WITH AN APPROVED SOD, AND ALL DAMAGE TO UNMOWED FIELDS SHALL BE SEEDED IN ACCORDANCE WITH STANDARD SPECIFICATIONS 252 AND 250 RESPECTIVELY.

NOTE:
 THE TRAFFIC SIGNAL CONTROLLER EQUIPMENT FOR THIS PROJECT SHALL BE "ECONOLITE" TO MATCH THE EXISTING ADJACENT SYSTEM.

FILE NAME =	USER NAME = FPAICONE	DESIGNED - ABR	REVISED -	STATE OF ILLINOIS DEPARTMENT OF TRANSPORTATION	TRAFFIC SIGNAL MODERNIZATION PLAN			F.A.P. RTE.	SECTION	COUNTY	TOTAL SHEETS	SHEET NO.
N:\dot\0808040\Task G-P IL 50\Task K - IL 50 @ 23rd S\TSD_IL50+23-d.dgn	50 @ 23rd S\TSD_IL50+23-d.dgn	DRAWN - FPB	REVISED -		IL. ROUTE 50 (CICERO AVE.) AND 23rd STREET / HAWTHORNE WORKS SHOPPING CENTER CICERO, ILLINOIS			35E	2008-080-I	COOK	76	24
PLOT SCALE = 20'		CHECKED - MJT	REVISED -		SCALE: 1"= 20'			SHEET NO. OF SHEETS STA. TO STA.		CONTRACT NO. 60F82		
PLOT DATE = 12/10/2008		DATE -	REVISED -		SHEET NO. OF SHEETS STA. TO STA.			FED. ROAD DIST. NO.	ILLINOIS	FED. AID PROJECT		