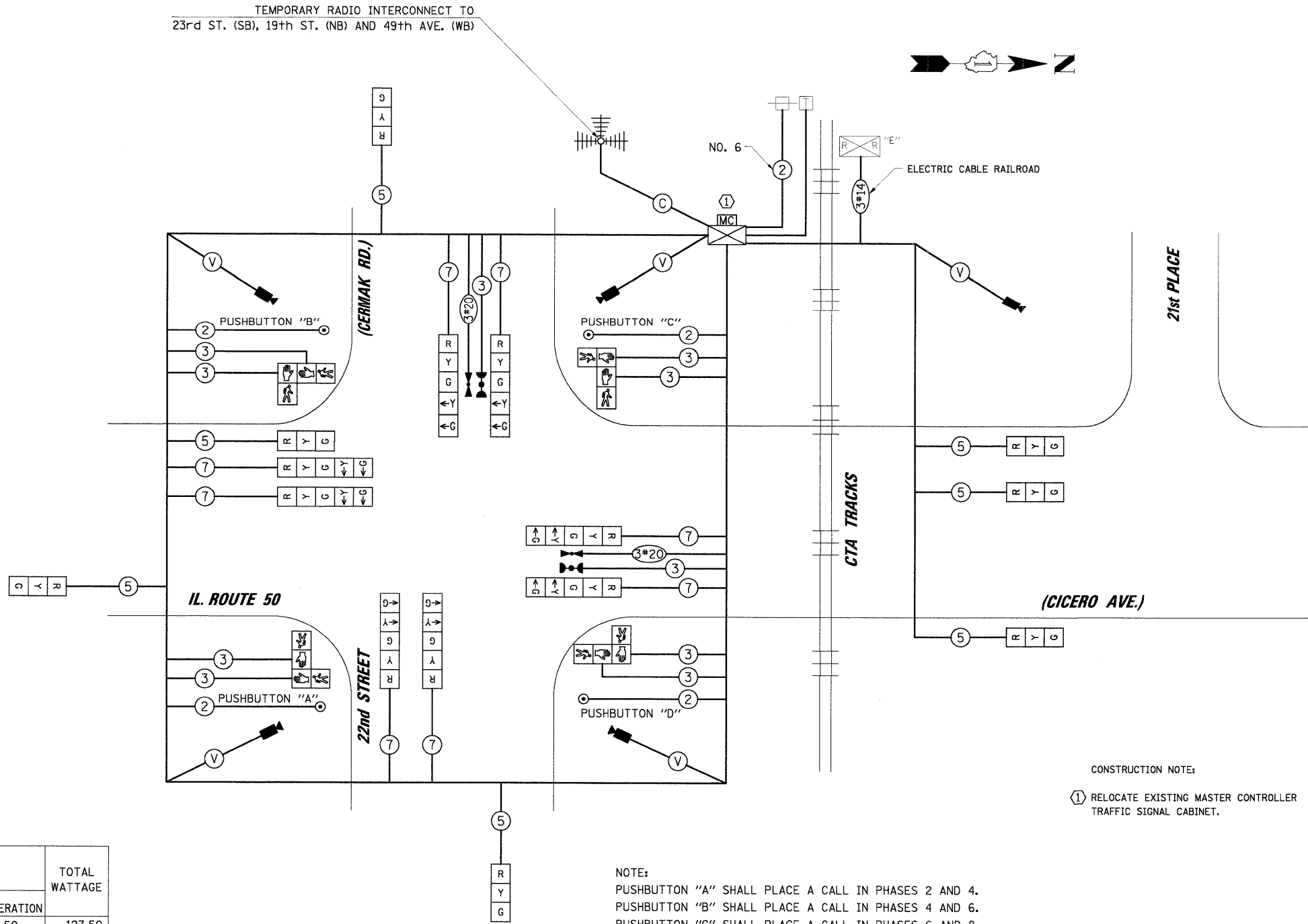


DATE: _____ BY: _____
 SURVEYED: _____ ALIGNED: _____
 GRADES CHECKED: _____
 PROFILE: _____
 NOTE BOOK NO. _____
 DATE: _____ BY: _____
 SURVEYED: _____ ALIGNED: _____
 GRADES CHECKED: _____
 PROFILE: _____
 NOTE BOOK NO. _____

CHRISTOPHER B. BURKE ENGINEERING LTD.
 3575 West Higgins Road, Suite 600
 Chicago, Illinois 60608
 (847) 821-0500

TEMPORARY RADIO INTERCONNECT TO
 23rd ST. (SB), 19th ST. (NB) AND 49th AVE. (WB)



- TEMPORARY CABLE DIAGRAM LEGEND**
- R TEMPORARY TRAFFIC SIGNAL SECTION OR PEDESTRIAN SIGNAL SECTION 12" (300mm)
 - X TEMPORARY CONTROLLER CABINET
 - TEMPORARY SERVICE INSTALLATION
 - 5 INDICATES NUMBER OF CONDUCTORS IN CABLE. ALL CONDUCTORS TO BE NUMBER 14 AWG WIRE UNLESS OTHERWISE NOTED.
 - ▶ EMERGENCY VEHICLE LIGHT DETECTOR
 - ◀ CONFIRMATION BEACON
 - VEHICLE DETECTOR, INDUCTION LOOP
 - PEDESTRIAN PUSHBUTTON DETECTOR
 - ◻ 12" (300mm) PEDESTRIAN SIGNAL SECTION
 - ◻ EXISTING SIGNAL HEADS
 - ◻ EXISTING TELEPHONE
 - ◻ EXISTING RAILROAD CONTROLLER CABINET
 - ◻ ILLUMINATED SIGN, FIBER OPTIC (NO LEFT TURN)
 - ◻ ILLUMINATED SIGN, FIBER OPTIC (NO RIGHT TURN)
 - ◻ VIDEO DETECTION CAMERA
 - V VENDOR CABLE
 - ⊕ RADIO INTERCONNECT
 - C COAXIAL CABLE

CONSTRUCTION NOTE:
 ① RELOCATE EXISTING MASTER CONTROLLER TO THE TEMPORARY TRAFFIC SIGNAL CABINET.

NOTE:
 PUSHBUTTON "A" SHALL PLACE A CALL IN PHASES 2 AND 4.
 PUSHBUTTON "B" SHALL PLACE A CALL IN PHASES 4 AND 6.
 PUSHBUTTON "C" SHALL PLACE A CALL IN PHASES 6 AND 8.
 PUSHBUTTON "D" SHALL PLACE A CALL IN PHASES 2 AND 8.

TEMPORARY CABLE PLAN

I.D.O.T. TRAFFIC SIGNAL INSTALLATION ELECTRICAL SERVICE REQUIREMENTS					TOTAL WATTAGE
TYPE	NO. OF LAMPS	WATTAGE X INCAND.	LED X % OPERATION		
SIGNAL (RED)	15		17	0.50	127.50
(YELLOW)	15		25	0.25	93.75
(GREEN)	15		15	0.25	56.25
ARROW	16		12	0.10	19.20
PED. SIGNAL	8		25	1.00	200.00
CONTROLLER	1		100	1.00	100.00
ILLUM. SIGN	-		25	0.05	-
VIDEO SYSTEM	1		150	1.00	150.00
FLASHER				0.50	
ENERGY COSTS TO:					TOTAL = 746.70

ILLINOIS DEPARTMENT OF TRANSPORTATION
 DIVISION OF HIGHWAY/DISTRICT 1
 201 WEST CENTER COURT/SCHAUMBURG, ILLINOIS 60196-1096
 ENERGY SUPPLY: CONTACT: STEVE FITZGERALD
 PHONE: (708) 235-2327
 COMPANY: COMED

FOUNDATION (DEPTH)	FT. (m)	CABLE SLACK	FT. (m)	VERTICAL	FT. (m)
TYPE A - POST	4 (1.2)	HANDHOLE	6.5 (2.0)	ALL FOUNDATIONS	3.5 (1.0)
C - CONTROLLER W/ UPS	4 (1.2)	DOUBLE HANDHOLE	13 (4.0)	MAST ARM (L) POLE	20'-H-2=
D - CONTROLLER	4 (1.2)	SIGNAL POST	2 (1.0)		(6m+L-0.6m)=
E - M. ARM POLE		CONTROLLER CAB.	1 (0.5)	BRACKET MOUNTED	13 (4.0)
30" (750mm)	15 (4.6)	FIBER OPTIC	13 (4.0)	PED. PUSHBUTTON	6 (1.8)
36" (900mm)	15 (4.6)	ELECTRIC SERVICE	1 (0.5)	ELECTRIC SERVICE	13.5 (4.1)
42" (1050mm)	25 (7.6)	GROUND CABLE	1 (0.5)	SERVICE TO GROUND	13.5 (4.1)
				POST MOUNTED	6 (1.8)