

STATE OF ILLINOIS
DEPARTMENT OF TRANSPORTATION
DIVISION OF HIGHWAYS
PROPOSED HIGHWAY PLANS

FOR INDEX OF SHEETS, SEE SHEET NO. 2

IMPROVEMENT LOCATED IN
THE CITY OF CHICAGO

F.A.I. 90/94: I-90/94 (KENNEDY EXPRESSWAY)

AT OHIO ST. RAMPS

SECTION: 2008-070 RS

RESURFACING (MAINTENANCE)

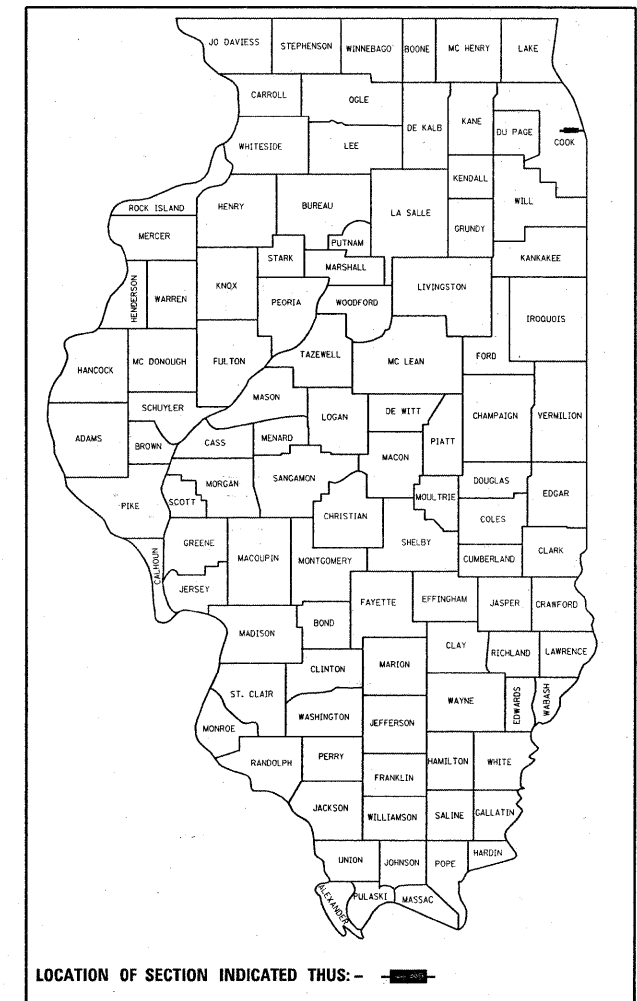
COOK COUNTY

C-91-214-09

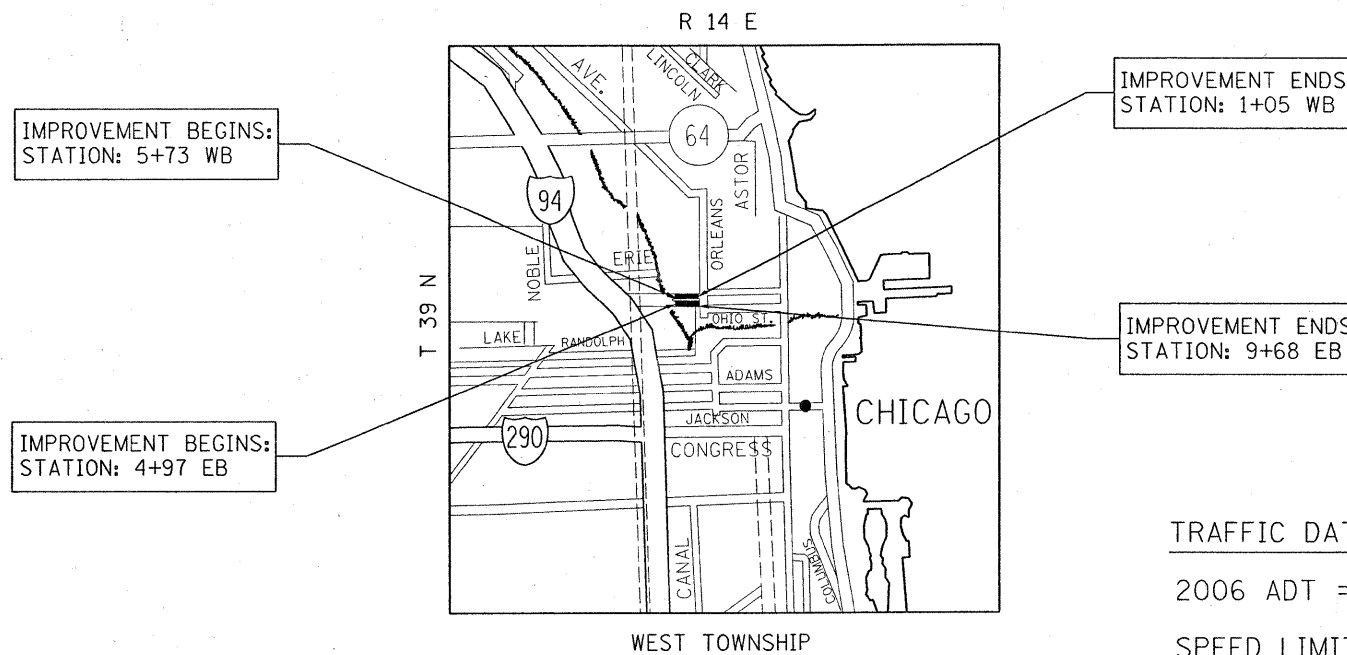
F.A.I. RTE.	SECTION	COUNTY	TOTAL SHEETS	SHEET NO.
90/94	2008-070 RS	COOK	13	1
FED. ROAD DIST. NO. 1	ILLINOIS	CONTRACT NO. 60F68		

13-1-12

D-91-214-09

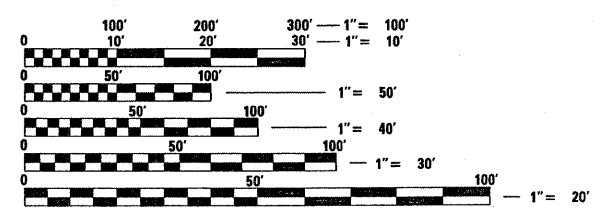


LOCATION OF SECTION INDICATED THUS: -



TRAFFIC DATA
2006 ADT = 27,500
SPEED LIMIT = 40 MPH

GROSS AND NET LENGTH OF IMPROVEMENT = 471 FEET = 0.09 MILES



FULL SIZE PLANS HAVE BEEN PREPARED USING STANDARD ENGINEERING SCALES. REDUCED SIZED PLANS WILL NOT CONFORM TO STANDARD SCALES. IN MAKING MEASUREMENTS ON REDUCED PLANS, THE ABOVE SCALES MAY BE USED.

J.U.L.I.E.
JOINT UTILITY LOCATION INFORMATION FOR EXCAVATION
1-800-892-0123
OR 811

PROJECT ENGINEER: JENPAI CHANG (847) 705-4432
PROJECT MANAGER: KEN ENG

CONTRACT NO. 60F68

STATE OF ILLINOIS
DEPARTMENT OF TRANSPORTATION
DIVISION OF HIGHWAYS

SUBMITTED DECEMBER 16, 20 08

Diana M. O'Keefe cc
DEPUTY DIRECTOR OF HIGHWAYS, REGION ENGINEER

January 30 09
Charles G. Ingersoll / RD
ENGINEER OF DESIGN AND ENVIRONMENT

January 30, 20 09
Christine M. Reed / RD
DIRECTOR OF HIGHWAYS, CHIEF ENGINEER

**PRINTED BY THE AUTHORITY
OF THE STATE OF ILLINOIS**

INDEX OF SHEETS

STATE STANDARDS

GENERAL NOTES

<u>SHEET NO.</u>	<u>DESCRIPTION</u>	<u>STANDARD NO.</u>	<u>DESCRIPTION</u>
1	TITLE SHEET	000001-05	STANDARD SYMBOLS, ABBREVIATIONS AND PATTERNS
2	INDEX OF SHEETS, STATE STANDARDS & GENERAL NOTES	442201-03	CLASS C AND D PATCHES
3	SUMMARY OF QUANTITIES	701411-05	LANE CLOSURE, MULTILANE, AT ENTRANCE OR EXIT RAMPS, FOR SPEEDS \geq 45 MPH
4-5	EXISTING AND PROPOSED TYPICAL SECTIONS	701426-03	LANE CLOSURE, MULTILANE, INTERMITTENT OR MOVING OPERATION FOR SPEEDS \geq 45 MPH
6	ROADWAY AND PAVEMENT MARKING PLAN	701601-06	URBAN LANE CLOSURE, MULTILANE, 1W OR 2W WITH NONTRAVERSABLE MEDIAN
7	PAVEMENT PATCHING FOR HMA SURFACED PAVEMENT, BD 400-04 (BD-22)	701901-01	TRAFFIC CONTROL DEVICES
8	BUTT JOINT AND HMA TAPER, BD 400-05 (BD-32)		
9	SINGLE LANE WEAVE AND MULTI-LANE WEAVE, TC-09		
10-11	MULTI-LANE FREEWAY PAVEMENT MARKING DETAIL, TC-12		
12	PAVEMENT MARKING LETTERS AND SYMBOLS FOR TRAFFIC STAGING, TC-16 <i>NOT USED</i>		
13	FREEWAY SHOULDER CLOSURES AND PARTIAL RAMP CLOSURES, TC-17		

BEFORE STARTING ANY EXCAVATION, THE CONTRACTOR SHALL CALL "C.U.A.N." (CHICAGO UTILITY ALERT NETWORK) AT (312) 744-7000 FOR FIELD LOCATIONS OF BURIED ELECTRIC, TELEPHONE AND GAS UTILITIES 48 HOUR NOTIFICATION IS REQUIRED).

THE CONTRACTOR WILL NOT BE ABLE TO SET UP A YARD OR FIELD OFFICE ON STATE (OR TOLLWAY) PROPERTY WITHOUT THE WRITTEN PERMISSION OF THE DEPARTMENT (OR ISTHA).

BUTT JOINTS WILL BE INSTALLED AT THE ENDS OF RESURFACING (WHERE RESURFACING MEETS EXISTING PAVEMENT) IN ACCORDANCE WITH THE "BUTT JOINT AND HMA TAPER DETAILS" SHEET INCLUDED IN THE PLANS UNLESS OTHERWISE SPECIFIED.

WHEN MILLED PAVEMENT IS OPEN TO TRAFFIC, THE MAXIMUM GRADE DIFFERENTIAL BETWEEN PASSES OF THE MILLING MACHINE SHALL NOT EXCEED 1/2 INCHES WHERE THE SPEED LIMIT IS 45 MPH OR LESS, AND 1 INCH WHERE THE SPEED LIMIT IS OVER 45 MPH. WITH WRITTEN APPROVAL FROM THE RESIDENT ENGINEER, A MAXIMUM GRADE DIFFERENTIAL OF 3 INCHES MAY BE ALLOWED IF THE EDGE OF THE MILLING IS SLOPED A MINIMUM OF 1:3 (V:H).

WHEN ARTIFICIAL LIGHTING IS UTILIZED IN NIGHT OPERATIONS, THE CONTRACTOR SHALL EXERCISE THE UTMOST PRECAUTIONS IN PREVENTING ADVERSE VISABILITY TO THE MOTORING PUBLIC AND ADJOINING RESIDENTIAL AREAS.

ALL PAVEMENT PATCHING LOCATIONS WILL BE DETERMINED IN THE FIELD BY THE ENGINEER.

BEFORE BEGINNING ANY WORK, THE CONTRACTOR SHALL RETAIN AND RECORD FOR FUTURE REFERENCE, ALL EXISTING PAVEMENT MARKING LINES (AND RAISED REFLECTIVE PAVEMENT MARKERS) IN ORDER THAT THESE LOCATIONS CAN BE RE-ESTABLISHED FOR STRIPING. EXACT LOCATIONS OF ALL PAVEMENT MARKINGS SHALL BE AS DIRECTED BY THE ENGINEER.

ALL PAVEMENT MARKINGS AND RAISED REFLECTIVE PAVEMENT MARKERS OBLITERATED BY MILLING AND RESURFACING OPERATIONS ON SIDE STREETS AND ENTRANCES SHALL BE REPLACED AND PAID FOR IN KIND.

THE RESIDENT ENGINEER SHALL CONTACT EXPRESSWAY OPERATIONS AT (847) 705-4151 A MINIMUM OF 2 WEEKS PRIOR TO PLACEMENT OF FINAL PAVEMENT MARKINGS.

THE RESIDENT ENGINEER SHALL CONTACT THE TRAFFIC CONTROL SUPERVISOR AT (847) 705-4155 A MINIMUM OF 72 HOURS PRIOR TO THE INSTALLATION OF ANY TEMPORARY TRAFFIC CONTROL DEVICES.

FILE NAME =	USER NAME = mossse	DESIGNED -	REVISED -	STATE OF ILLINOIS DEPARTMENT OF TRANSPORTATION	I-90/94 AT OHIO ST. RAMPS INDEX OF SHEETS, STATE STANDARDS AND GENERAL NOTES			F.A.I. RTE.	SECTION	COUNTY	TOTAL SHEETS	SHEET NO.
ct:\pw_work\PWIDOT\MOSSSE\0104195\sh_rdy.dgn		DRAWN -	REVISED -		90/94	2008-070 RS	COOK	13	2			
PLOT SCALE = 50,0000' / IN.		CHECKED -	REVISED -		SCALE:		SHEET NO. OF SHEETS	STA.	TO STA.	CONTRACT NO. 60F68		
PLOT DATE = 1/27/2009		DATE -	REVISED -		FED. ROAD DIST. NO. 1 ILLINOIS FED. AID PROJECT							

SUMMARY OF QUANTITIES			URBAN 100% STATE	CONSTRUCTION TYPE CODE				
CODE NO	ITEM	UNIT	TOTAL QUANTITIES	1000-2A				
40600200	BITUMINOUS MATERIALS (PRIME COAT)	TON	5	5				
40600300	AGGREGATE (PRIME COAT)	TON	11	11				
40600400	MIXTURE FOR CRACKS, JOINTS, AND FLANGEWAYS	TON	3	3				
40600635	LEVELING BINDER (MACHINE METHOD), N70	TON	300	300				
40600895	CONSTRUCTING TEST STRIP	EACH	1	1				
40600982	HOT-MIX ASPHALT SURFACE REMOVAL - BUTT JOINT	SO YD	115	115				
40603595	POLYMERIZED HOT-MIX ASPHALT SURFACE COURSE, MIX "F", N90	TON	531	531				
44000156	HOT-MIX ASPHALT SURFACE REMOVAL, 1 3/4"	SO YD	510	510				
44000159	HOT-MIX ASPHALT SURFACE REMOVAL, 2 1/2"	SO YD	4910	4910				
44201807	CLASS D PATCHES, TYPE III, 13 INCH	SO YD	30	30				
44201809	CLASS D PATCHES, TYPE IV, 13 INCH	SO YD	75	75				
55039700	STORM SEWERS TO BE CLEANED	FOOT	500	500				
67000400	ENGINEER'S FIELD OFFICE, TYPE A	CAL MO	3	3				
67100100	MOBILIZATION	L SUM	1	1				
70106800	CHANGEABLE MESSAGE SIGN	CAL MO	4	4				
70300100	SHORT TERM PAVEMENT MARKING	FOOT	1300	1300				
70300210	TEMPORARY PAVEMENT MARKING - LETTERS AND SYMBOLS	SO FT	146	146				
70300220	TEMPORARY PAVEMENT MARKING - LINE 4"	FOOT	3960	3960				
70300230	TEMPORARY PAVEMENT MARKING - LINE 5"	FOOT	740	740				
70300240	TEMPORARY PAVEMENT MARKING - LINE 6"	FOOT	300	300				
70300260	TEMPORARY PAVEMENT MARKING - LINE 12"	FOOT	290	290				
70300280	TEMPORARY PAVEMENT MARKING - LINE 24"	FOOT	70	70				

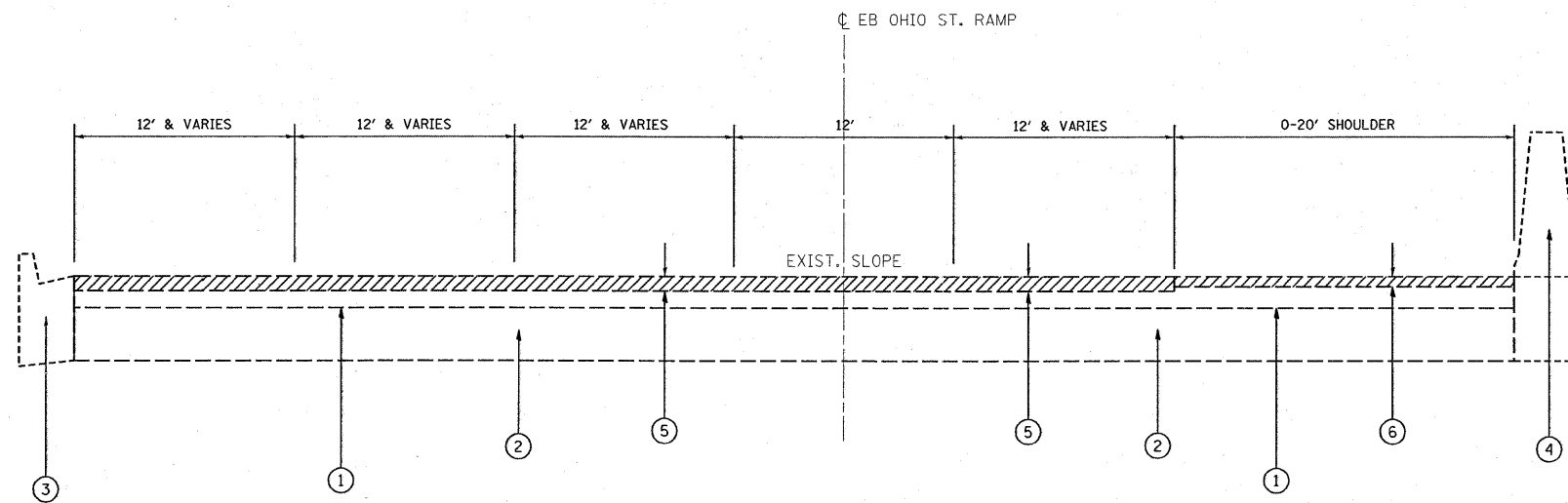
SUMMARY OF QUANTITIES			URBAN 100% STATE	CONSTRUCTION TYPE CODE				
CODE NO	ITEM	UNIT	TOTAL QUANTITIES	1000-2A				
70301000	WORK ZONE PAVEMENT MARKING REMOVAL	SO FT	1730	1730				
* 78000100	THERMOPLASTIC PAVEMENT MARKING - LETTERS AND SYMBOLS	SO FT	146	146				
* 78000200	THERMOPLASTIC PAVEMENT MARKING - LINE 4"	FOOT	1900	1900				
* 78000600	THERMOPLASTIC PAVEMENT MARKING - LINE 12"	FOOT	290	290				
* 78000650	THERMOPLASTIC PAVEMENT MARKING - LINE 24"	FOOT	70	70				
* 78004210	PREFORMED PLASTIC PAVEMENT MARKING, TYPE B LINE 4" (INLAID)	FOOT	80	80				
* 78004220	PREFORMED PLASTIC PAVEMENT MARKING, TYPE B LINE 5" (INLAID)	FOOT	470	470				
* 78004230	PREFORMED PLASTIC PAVEMENT MARKING, TYPE B LINE 6" (INLAID)	FOOT	300	300				
* 78100100	RAISED REFLECTIVE PAVEMENT MARKER	EACH	60	60				
78300100	PAVEMENT MARKING REMOVAL	SO FT	434	434				
78300200	RAISED REFLECTIVE PAVEMENT MARKER REMOVAL	EACH	60	60				
* 88600600	DETECTOR LOOP REPLACEMENT	FOOT	150	150				
X7011015	TRAFFIC CONTROL AND PROTECTION (EXPRESSWAYS)	L SUM	1	1				
Z0018500	DRAINAGE STRUCTURES TO BE CLEANED	EACH	7	7				

* SPECIALTY ITEMS

REVISIONS	
NAME	DATE

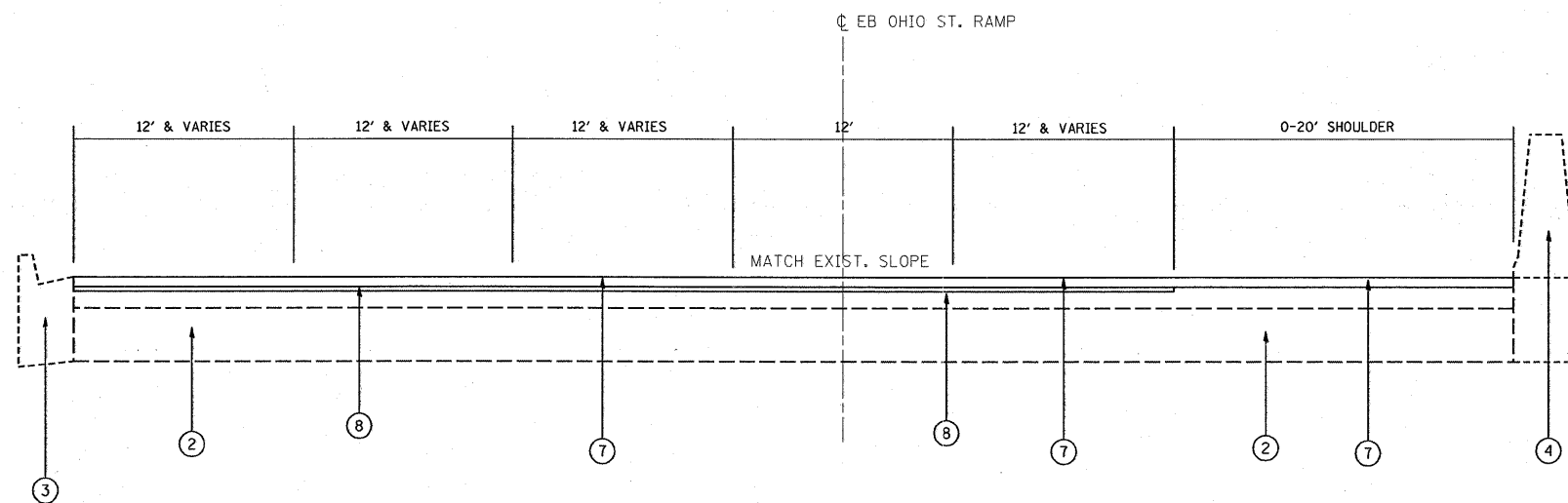
ILLINOIS DEPARTMENT OF TRANSPORTATION
SUMMARY OF QUANTITIES

Rev.



EXISTING TYPICAL SECTION
EASTBOUND OHIO ST. RAMP

STATION:
4+97 TO 9+68



PROPOSED TYPICAL SECTION
EASTBOUND OHIO ST. RAMP

STATION:
4+97 TO 9+68

LEGEND

- ① EXISTING HOT-MIX ASPHALT SURFACE COURSE (BEFORE MILLING), 5 1/2" (±)
- ② EXISTING PCC BASE COURSE, 10" (±)
- ③ EXISTING CONCRETE CURB AND GUTTER, TYPE B-6.24
- ④ EXISTING CONCRETE BARRIER
- ⑤ PROPOSED HOT-MIX ASPHALT SURFACE REMOVAL - 2 1/2"
(3 1/2" OF HOT-MIX ASPHALT TO REMAIN)
- ⑥ PROPOSED HOT-MIX ASPHALT SURFACE REMOVAL - 1 3/4"
(4 1/4" OF HOT-MIX ASPHALT TO REMAIN)
- ⑦ PROPOSED HOT-MIX ASPHALT SURFACE COURSE, MIX "F", N90, 1 3/4"
- ⑧ PROPOSED LEVELING BINDER (MM), N70, 3/4"

NOTES:

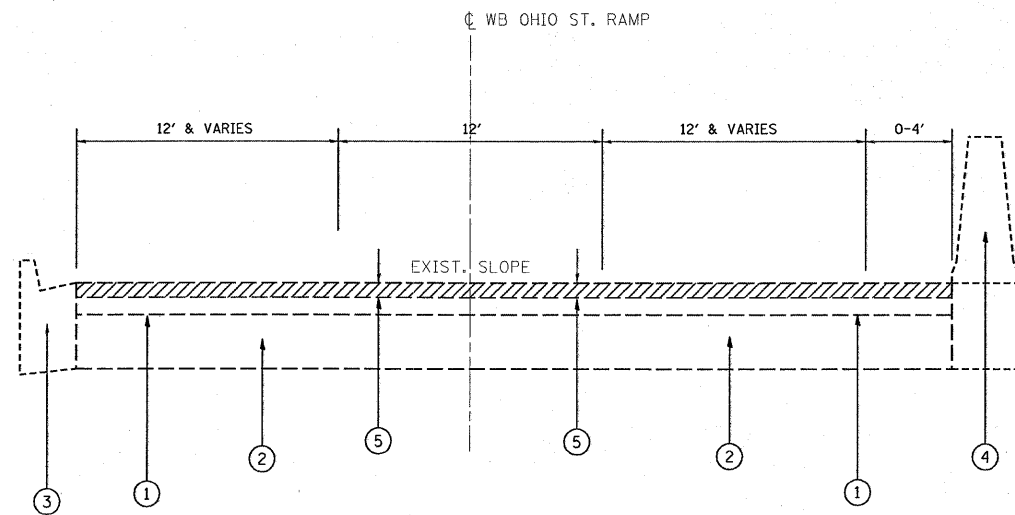
HMA SHOULDER WITH BARRIER WALL FROM STA. 4+97 TO STA. 5+59 ON LT.
CONC. CURB & GUTTER FROM STA. 8+72 TO STA. 9+68 ON RT.

* MILLING SHALL BE EXECUTED FIRST FOR THIS PROJECT

FILE NAME =	USER NAME = moss	DESIGNED -	REVISED -	STATE OF ILLINOIS DEPARTMENT OF TRANSPORTATION	I-9094 AT OHIO ST. RAMPS EXISTING AND PROPOSED TYPICAL SECTIONS	F.A.I. RTE.	SECTION	COUNTY	TOTAL SHEETS	SHEET NO.
ca:\pw_work\PWIDOT\MOSSE\j0104195\sh_r01.dgn	DRAWN -	REVISED -	90/94			2008-070 RS	COOK	13	4	
PLOT SCALE = 50.0000 // IN.	CHECKED -	REVISED -	CONTRACT NO. 60F68							
PLOT DATE = 12/23/2008	DATE -	REVISED -	SCALE:			SHEET NO. OF SHEETS	STA. TO STA.	FED. ROAD DIST. NO. 1 ILLINOIS FED. AID PROJECT		

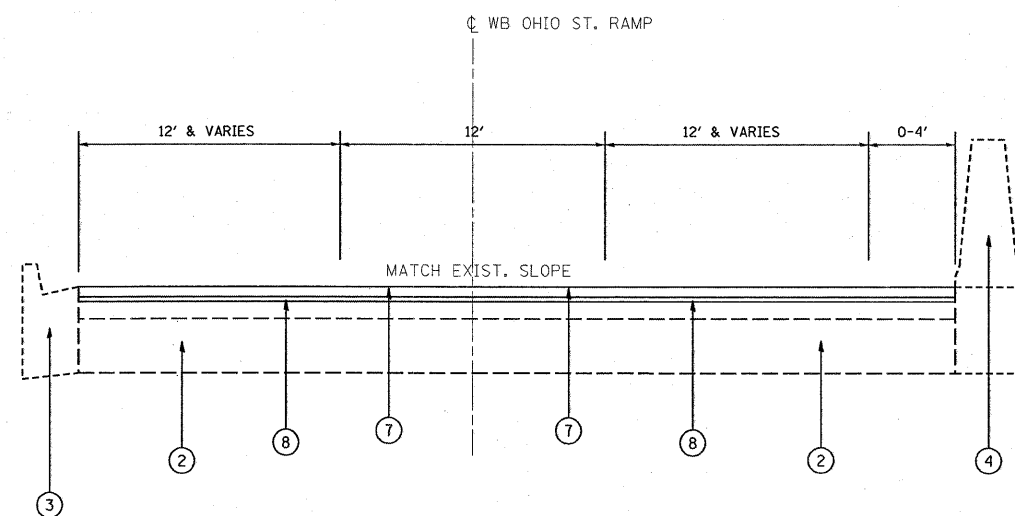
LEGEND

- ① EXISTING HOT-MIX ASPHALT SURFACE COURSE (BEFORE MILLING), 5 1/2"(±)
- ② EXISTING PCC BASE COURSE, 10"(±)
- ③ EXISTING CONC. CURB AND GUTTER, TYPE B-6.24
- ④ EXISTING CONCRETE BARRIER
- ⑤ PROPOSED HOT-MIX ASPHALT SURFACE REMOVAL - 2 1/2"
(3 1/2" OF HOT-MIX ASPHALT TO REMAIN)
- ⑥ PROPOSED HOT-MIX ASPHALT SURFACE REMOVAL - 1 3/4"
(4 1/4" OF HOT-MIX ASPHALT TO REMAIN)
- ⑦ PROPOSED HOT-MIX ASPHALT SURFACE COURSE, MIX "F", N90, 1 3/4"
- ⑧ PROPOSED LEVELING BINDER (MM), N70, 3/4"



EXISTING TYPICAL SECTION
WESTBOUND OHIO ST. RAMP

STATION:
1+05 TO 5+73



PROPOSED TYPICAL SECTION
WESTBOUND OHIO ST. RAMP

STATION:
1+05 TO 5+73

NOTES:

HMA SHOULDER WITH BARRIER WALL FROM STA. 4+87 TO STA. 5+73 ON LT.
CONC. CURB & GUTTER FROM STA. 1+05 TO STA. 1+75 ON RT.

HOT-MIX ASPHALT MIXTURE REQUIREMENTS

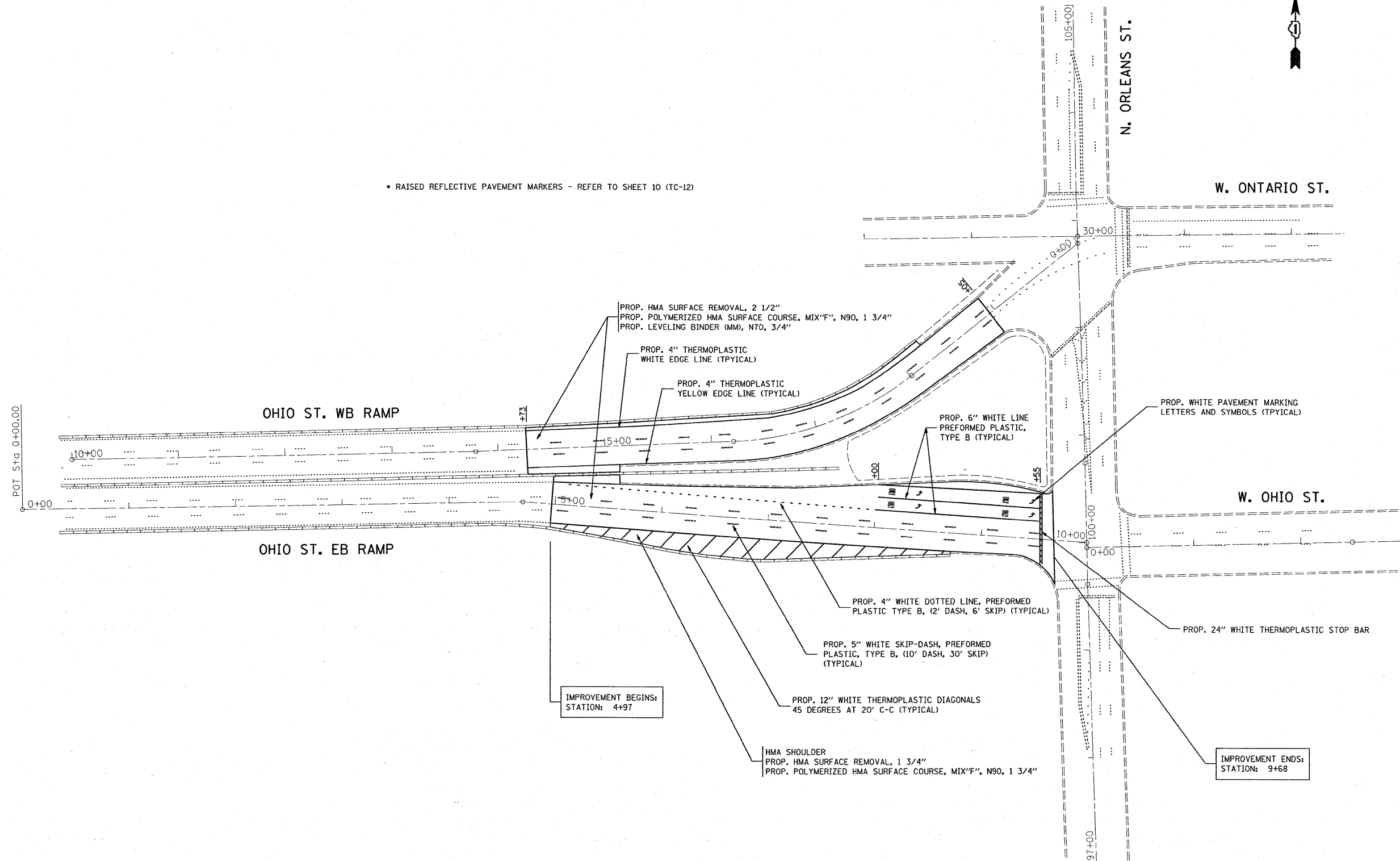
	MIXTURE TYPE	AC TYPE	AIR VOIDS (%)
ROADWAY	POLYMERIZED HOT-MIX ASPHALT SURFACE COURSE, MIX "F", N90, 1 3/4 "	SBS/SBR PG 70-22	4% @ 90 GYR
	LEVELING BINDER (MM), N70, 3/4"	PG 64-22/58-22	4% @ 70 GYR
PATCHES	CLASS D PATCHES, (BINDER IL-19.0 MM), 10"	PG 64-22*	4% @ 70 GYR
	HOT-MIX ASPHALT REPLACEMENT OVER PATCHES, (BINDER IL-19.0 MM)	PG 64-22*	4% @ 70 GYR

THE UNIT WEIGHT USED TO CALCULATE ALL HOT-MIX ASPHALT SURFACE MIXTURE QUANTITIES IS 112 LBS/SQ YD/IN

* WHEN RAP EXCEEDS 20%, THE NEW ASPHALT BINDER IN THE MIX SHALL BE PG 58-22



• RAISED REFLECTIVE PAVEMENT MARKERS - REFER TO SHEET 10 (TC-12)



FILE NAME =
 c:\pw\work\pwidot\MOSSSE\0104195\sh_r.dgn

USER NAME = mossse
 PLOT SCALE = 50,0000' / IN.
 PLOT DATE = 1/27/2009

DESIGNED -
 DRAWN -
 CHECKED -
 DATE -

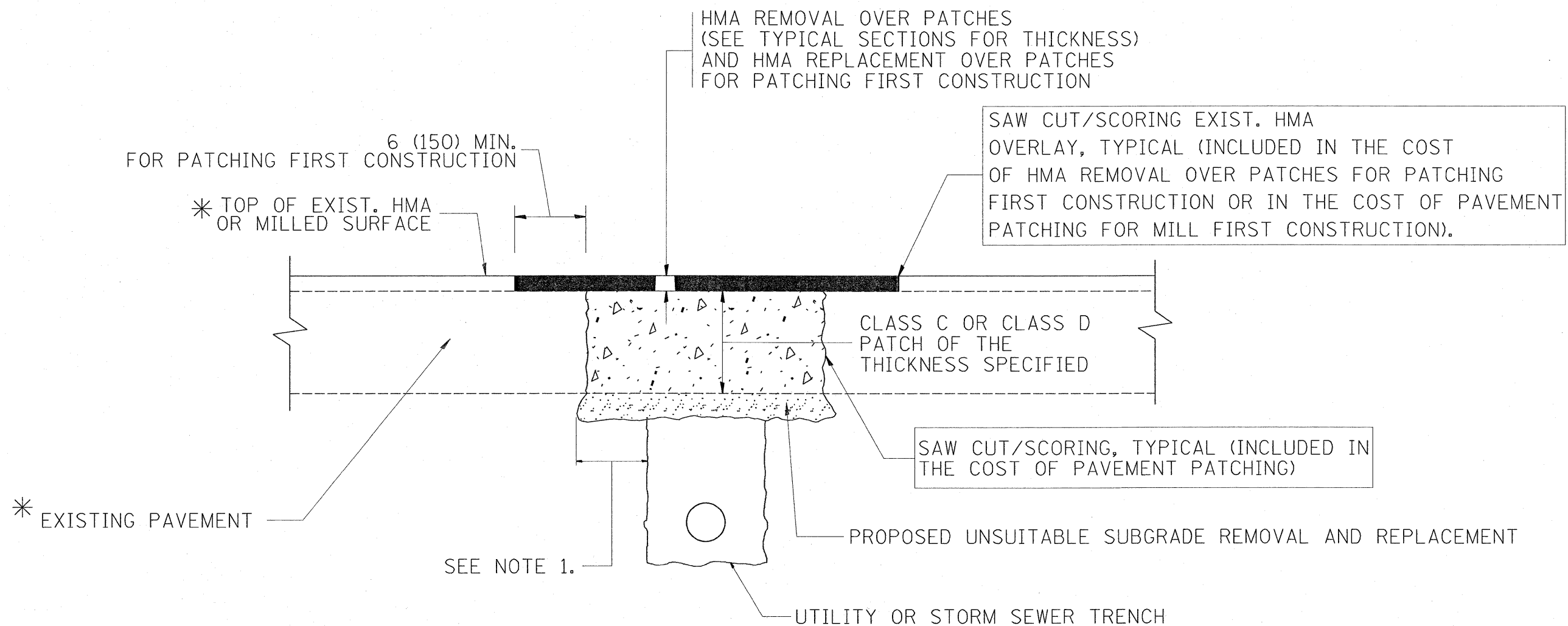
REVISED -
 REVISED -
 REVISED -
 REVISED -

**STATE OF ILLINOIS
 DEPARTMENT OF TRANSPORTATION**

**I-90/94 AT OHIO ST. RAMPS
 ROADWAY AND PAVEMENT MARKING PLAN**

SCALE: SHEET NO. OF SHEETS STA. TO STA.

F.A.I. RTE. 90/94	SECTION 2008-070 RS	COUNTY COOK	TOTAL SHEETS 13	SHEET NO. 6
FED. ROAD DIST. NO. ILLINOIS FED. AID PROJECT			CONTRACT NO. 60F68	



* SEE TYPICAL SECTIONS FOR THICKNESS AND MATERIALS

NOTES:

1. THE WIDTH OF THE FULL DEPTH PATCH OVER A TRENCH SHALL BE 12 (300) WIDER ON EACH SIDE OF THE TRENCH.
2. FOR METHOD OF MEASUREMENT AND BASIS OF PAYMENT, SEE RECURRING SPECIAL PROVISION "PATCHING WITH HOT-MIX ASPHALT OVERLAY REMOVAL".

SEQUENCE OF CONSTRUCTION (PATCHING FIRST)

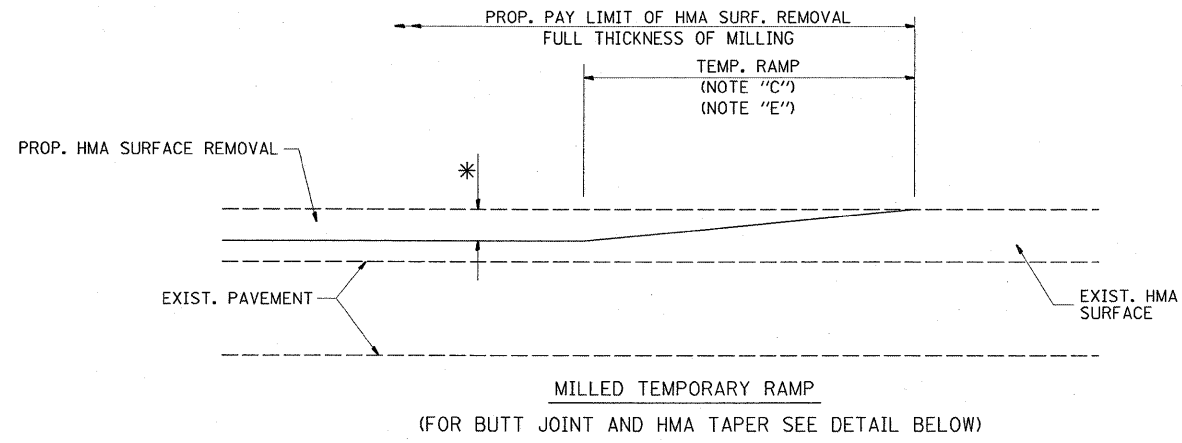
1. REMOVE THE EXISTING HMA MATERIAL OVER THE AREA TO BE PATCHED.
2. REMOVE AND REPLACE WITH CLASS C OR D PATCH.
3. REPLACE HMA MATERIAL OVER THE AREA TO BE PATCHED.

SEQUENCE OF CONSTRUCTION (MILLING FIRST)

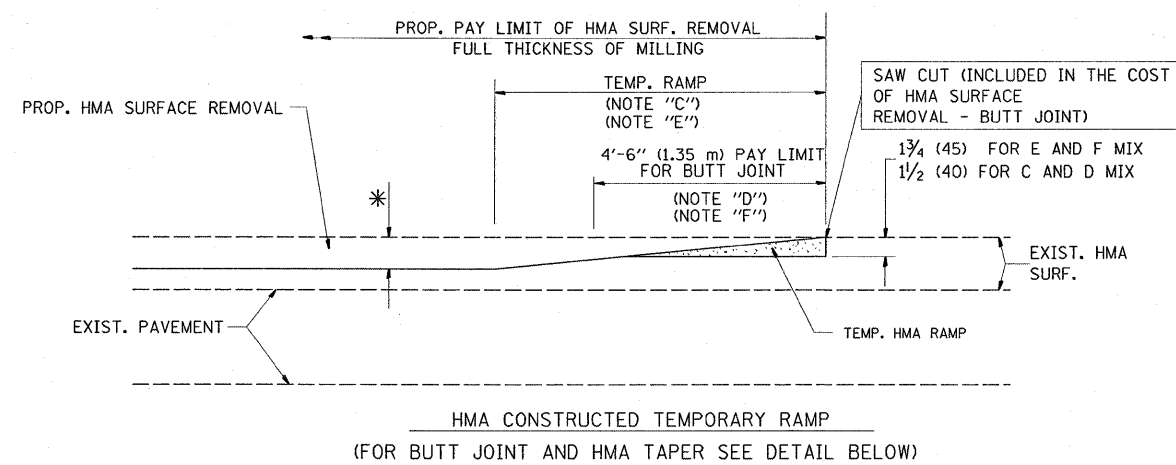
1. MILL HMA FIRST IF THERE IS AT LEAST 4 1/2 INCHES OR MORE OF HMA MATERIAL ON TOP OF THE EXISTING PAVEMENT OR IF THE PAVEMENT IS FULL DEPTH HMA. A MINIMUM OF 2 INCHES OF HMA MATERIAL SHALL BE IN PLACE AFTER MILLING.
2. REMOVE AND REPLACE WITH FULL DEPTH CLASS D PATCHES TO TOP OF MILLED SURFACE.

ALL DIMENSIONS ARE IN INCHES (MILLIMETERS) UNLESS OTHERWISE SHOWN.

FILE NAME =	USER NAME = mossse	DESIGNED - R. SHAH	REVISED - A. ABBAS 04-27-98	STATE OF ILLINOIS DEPARTMENT OF TRANSPORTATION	PAVEMENT PATCHING FOR HMA SURFACED PAVEMENT			F.A. -	SECTION	COUNTY	TOTAL SHEETS	SHEET NO.
cd\pw_work\VPWIDOT\MOSSSE\0104195\01.sts	cd.dgn	DRAWN -	REVISED - R. BORO 01-01-07		90/94	2008-070 RS	COOK	13	7			
	PLOT SCALE = 50,0000 ' / IN.	CHECKED -	REVISED - R. BORO 09-04-07		BD400-04 (BD-22)			CONTRACT NO.				
	PLOT DATE = 12/18/2008	DATE - 10-25-94	REVISED - K. ENG 10-27-08		SCALE: NONE	SHEET NO. 1 OF 1 SHEETS	STA.	TO STA.	FED. ROAD DIST. NO. 1 ILLINOIS FED. AID PROJECT			

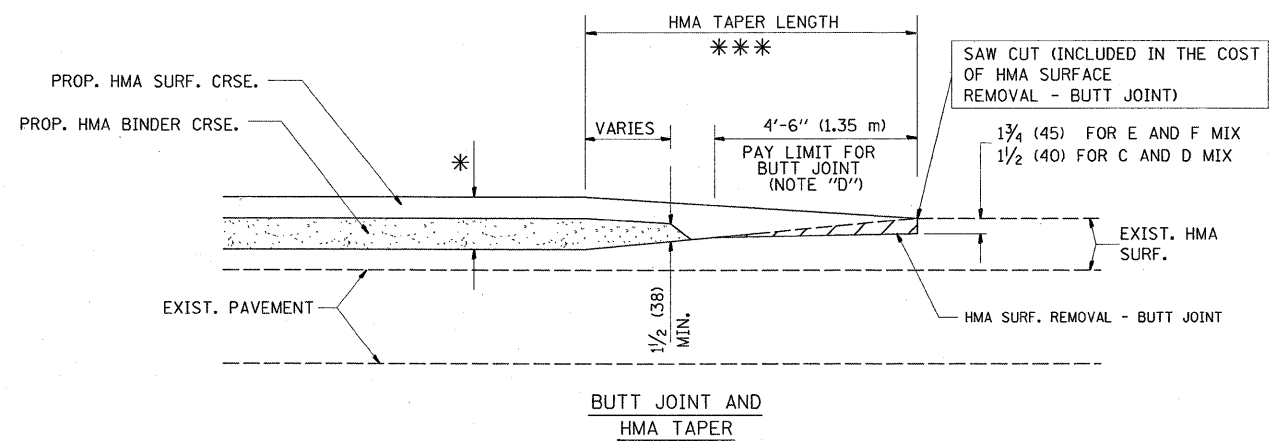


OPTION 1

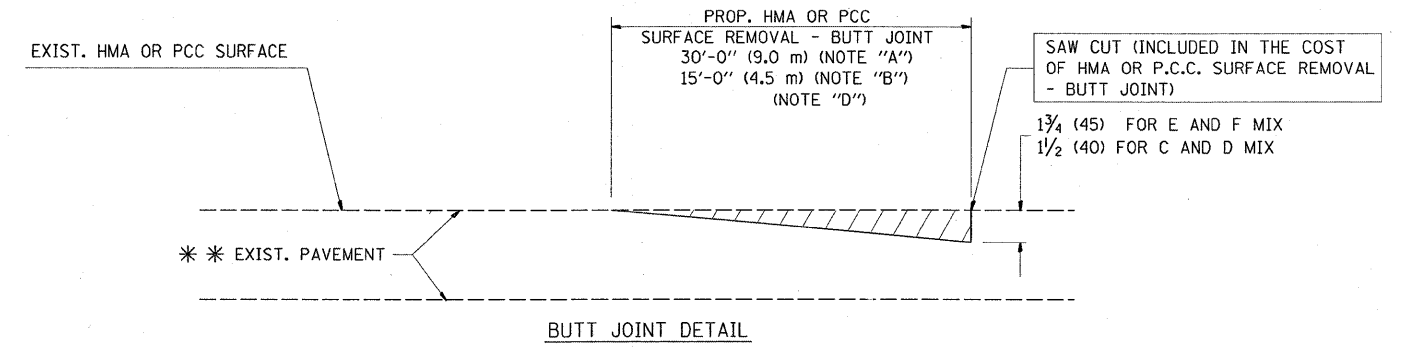


OPTION 2

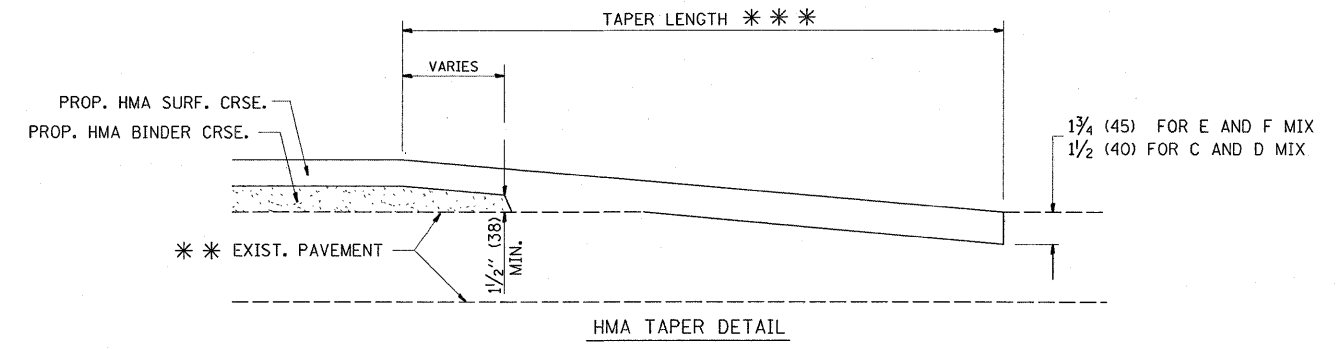
TYPICAL TEMPORARY RAMP



TYPICAL BUTT JOINT AND HMA TAPER FOR MILLING AND RESURFACING



BUTT JOINT DETAIL



HMA TAPER DETAIL

TYPICAL BUTT JOINT AND HMA TAPER FOR RESURFACING ONLY

*** PC CONCRETE, HMA OR HMA RESURFACED PAVEMENT.

NOTES

- A: MAINLINE ROADWAYS AND MAJOR SIDE ROADS.
 - B: MINOR SIDE ROADS.
 - C: THE TEMP. RAMP SHALL BE CONSTRUCTED IMMEDIATELY UPON REMOVAL OF THE EXISTING HMA SURFACE.
 - D: THE BUTT JOINT SHALL BE CONSTRUCTED IMMEDIATELY PRIOR TO PLACING THE PROPOSED HMA COURSES.
 - E: TAPER THE TEMP. RAMP AT A RATE OF 3'-0" (900 mm) PER 1 INCH (25 mm) OF MILLING THICKNESS.
 - F: INSTALLATION AND REMOVAL OF THE 4'-6" (1.35 m) TEMP. RAMP IS INCLUDED IN COST OF HMA SURFACE REMOVAL - BUTT JOINT
 - G: SEE ARTICLE 406.08 AND 406.14 OF THE STANDARD SPECIFICATIONS FOR "HMA AND/OR PCC SURFACE REMOVAL, BUTT JOINT".
- * SEE TYPICAL SECTIONS FOR MILLING THICKNESS.
- *** 20'-0" (6.1 m) PER 1 (25) RESURFACING (NOTE "A")
 10'-0" (3.0 m) PER 1 (25) RESURFACING (NOTE "B")

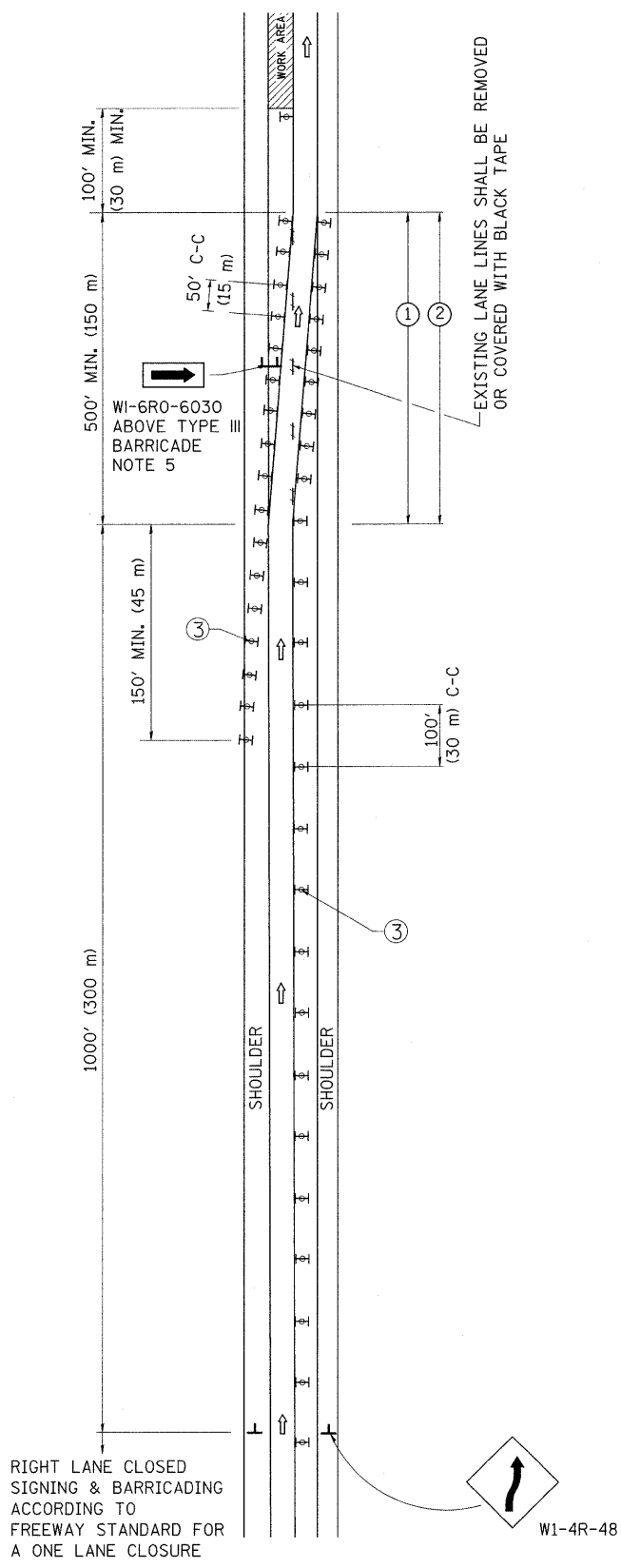
BASIS OF PAYMENT:

THE BUTT JOINT WILL BE PAID FOR AT THE CONTRACT UNIT PRICE PER SQUARE YARD (SQUARE METER) FOR "HOT-MIX ASPHALT SURFACE REMOVAL - BUTT JOINT" OR FOR "PORTLAND CEMENT CONCRETE SURFACE REMOVAL - BUTT JOINT".

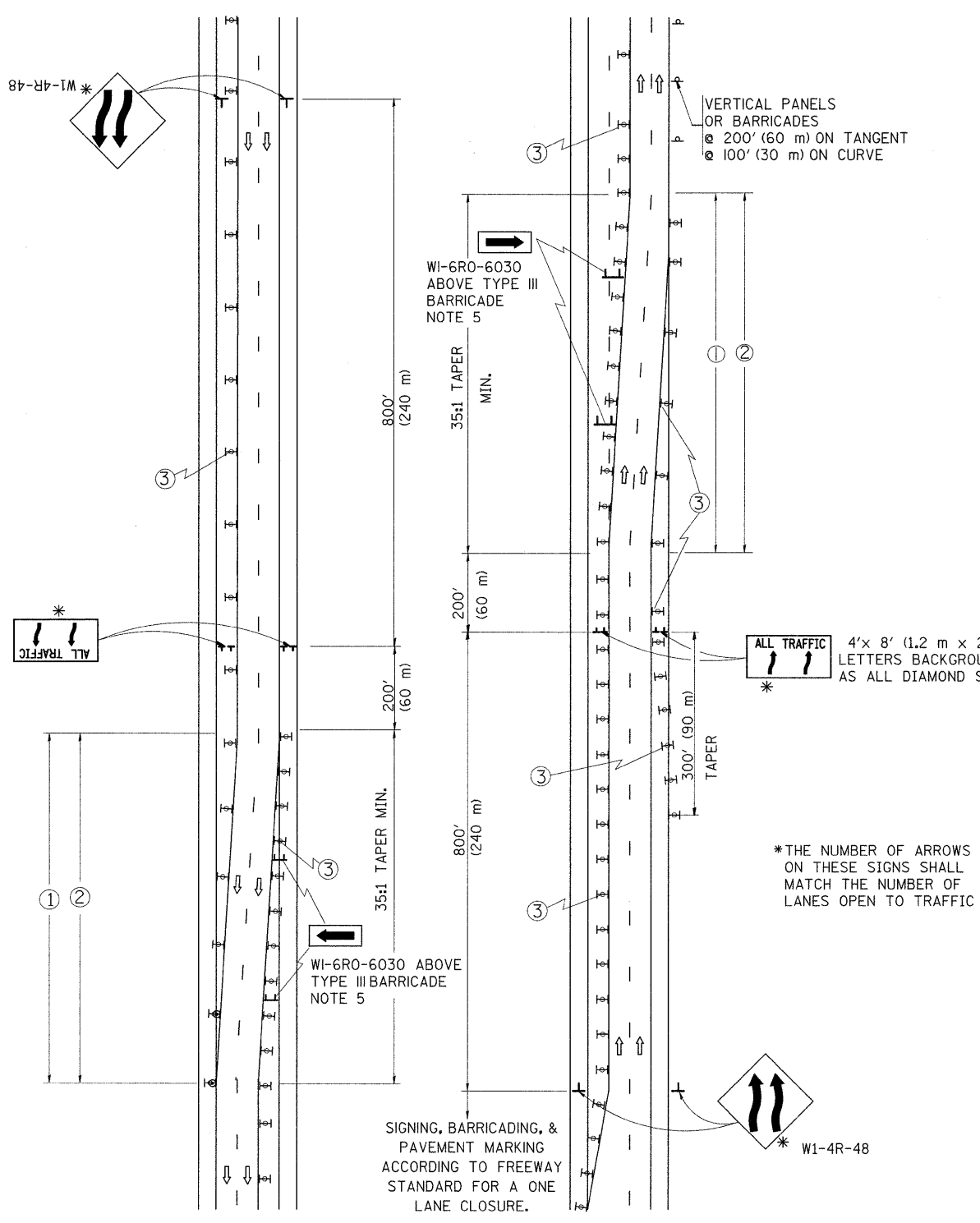
ALL DIMENSIONS ARE IN INCHES (MILLIMETERS) UNLESS OTHERWISE SHOWN.

FILE NAME = c:\pw_work\PWIDOT\MOSSSE\d0104195\DistS	USER NAME = mossss	DESIGNED - M. DE YONG	REVISED - R. SHAH 10-25-94	STATE OF ILLINOIS DEPARTMENT OF TRANSPORTATION	BUTT JOINT AND HMA TAPER DETAILS			F.A. RTE. 90/94	SECTION 2008-070 R5	COUNTY COOK	TOTAL SHEETS 13	SHEET NO. 8
	PLOT SCALE = 50.0000' / IN.	DRAWN -	REVISED - A. ABBAS 03-21-97		SCALE: NONE	SHEET NO. 1 OF 1 SHEETS	STA.	TO STA.	BD400-05 BD32		CONTRACT NO.	
	PLOT DATE = 12/18/2008	CHECKED -	REVISED - M. GOMEZ 04-06-01		FED. ROAD DIST. NO. 1 [ILLINOIS] FED. AID PROJECT							
		DATE - 06-13-90	REVISED - R. BORO 01-01-07									

SINGLE LANE WEAVE



MULTI-LANE WEAVE



GENERAL NOTES

- EXISTING CONFLICTING PAVEMENT MARKING LINES SHALL BE REMOVED OR COVERED WITH BLACK TAPE. PAVEMENT MARKING REMOVAL OR BLACK TAPE SHALL NOT BE REQUIRED FOR LANE CLOSURES UNDER 24 HOURS IN DURATION.
- CONTINUOUS REFLECTIVE TEMPORARY PAVEMENT MARKING TAPE SHALL BE PLACED THROUGHOUT THE TAPER AND FOR 300' (90 m) ALONG SIDE THE WORK AREA WHERE THE CLOSURE TIME IS GREATER THAN FOURTEEN DAYS. THE LEFT EDGE LINE SHALL BE YELLOW AND THE RIGHT EDGE LINE SHALL BE WHITE. FOR MULTI-LANE WEAVE LANE LINES SHALL BE 10'-30' (3 m-9 m) SKIP DASH, WHITE.
- PLASTIC DRUMS WITH STEADY BURN LIGHTS AT 50' (15 m) C-C SPACING IN TAPERS AND 100' (30 m) C-C SPACING IN TANGENTS.
- ALL SIGNS SHALL BE POST MOUNTED IF THE CLOSURE TIME EXCEEDS FOUR DAYS.
- IF A TYPE III BARRICADE WITH AN ATTACHED SIGN PANEL WHICH MEETS NCHRP 350 IS NOT AVAILABLE, THE SIGNS MAY BE MOUNTED ON NCHRP 350 TEMPORARY SIGN SUPPORTS DIRECTLY IN FRONT OF THE BARRICADE.
- IF THE WIDTH OF OFFSET IS LESS THAN 6' THEN THE TYPE III BARRICADE WITH ATTACHED ARROW SIGN PANEL CAN BE ELIMINATED IN THE TAPER AREAS.

4' x 8' (1.2 m x 2.4 m); 1 (25) BORDER; 10 (250) CAPITAL LETTERS BACKGROUND SHEETING SHALL BE THE SAME AS ALL DIAMOND SHAPED CONSTRUCTION SIGNS.

*THE NUMBER OF ARROWS ON THESE SIGNS SHALL MATCH THE NUMBER OF LANES OPEN TO TRAFFIC

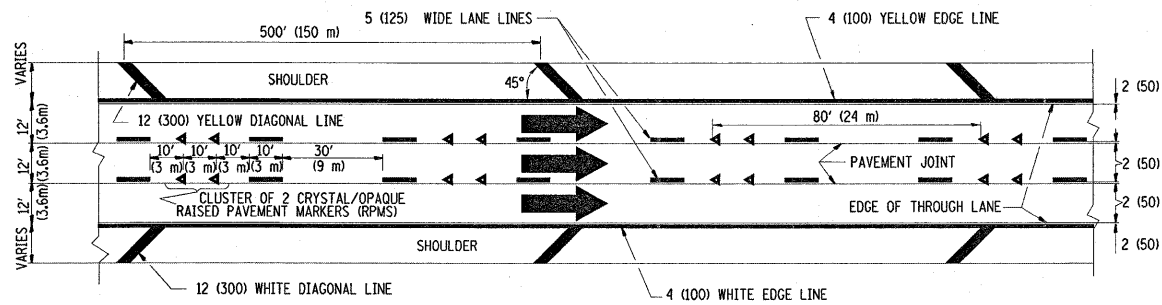
SYMBOLS

- ↑ DIRECTION OF TRAFFIC
- ▨ WORK AREA
- ┆ SIGN ON PORTABLE OR PERMANENT SUPPORT
- ⊞ TYPE II BARRICADE, DRUM OR VERTICAL BARRICADE WITH MONO-DIRECTIONAL STEADY BURNING LIGHT

ALL DIMENSIONS ARE IN INCHES (MILLIMETERS) UNLESS OTHERWISE SHOWN

FILE NAME =	USER NAME = mossse	DESIGNED - DWS	REVISED - DWS 11-96	STATE OF ILLINOIS DEPARTMENT OF TRANSPORTATION	TRAFFIC CONTROL DETAILS FOR FREEWAY SINGLE & MULTI-LANE WEAVE		F.A.I. RTE. 90/94	SECTION 2008-070 RS	COUNTY COOK	TOTAL SHEETS 13	SHEET NO. 9
ct:\pw_work\pwt\dot\mossse\d0104195\DistSt.dgn	PLOT SCALE = 50.0000' / IN.	DRAWN -	REVISED - JAF 01-03		SCALE: NONE	SHEET NO. 1 OF 1 SHEETS	STA. TO STA.	TC-09		CONTRACT NO.	
	PLOT DATE = 1/23/2009	CHECKED -	REVISED - JAF 02-06				FED. ROAD DIST. NO. 1 ILLINOIS FED. AID PROJECT				
		DATE - 02-87	REVISED - SPB 01-07								

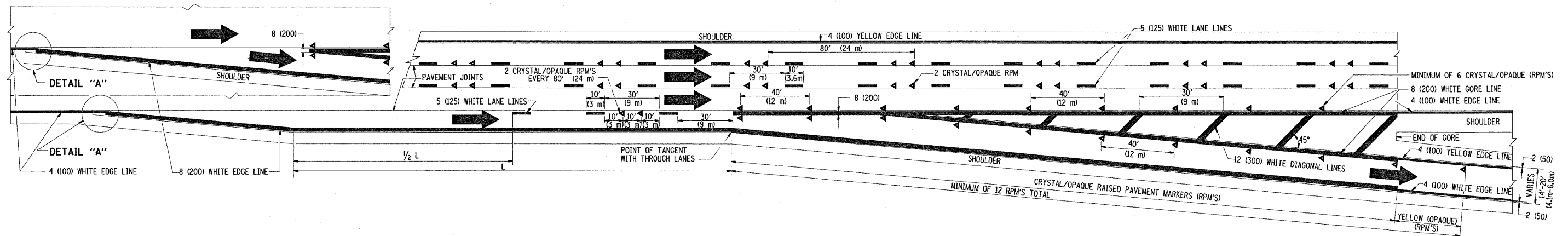
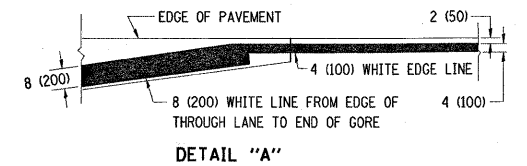
THE DIAGONAL LINES SHALL BE SPACED AT 40' (12 m) C-C ACROSS ALL STRUCTURES WHICH ARE 500' (150 m) OR LESS IN LENGTH
 THE DIAGONAL LINES ARE NOT REQUIRED ON SHOULDERS WHICH ARE 6' (1.8 m) OR LESS IN WIDTH



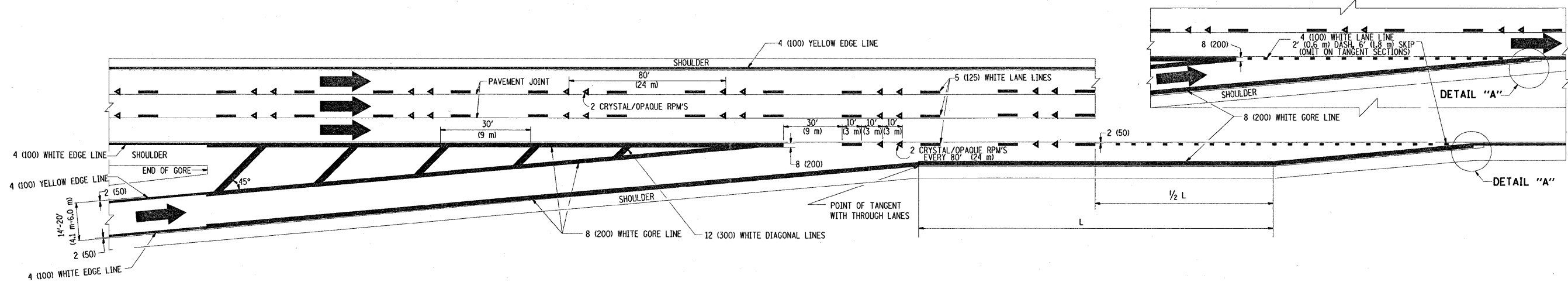
TYPICAL EDGE LINES & LANE LINES

NOTES:

1. THERMO PLASTIC PAVEMENT MARKING LINE SHALL BE USED FOR THE EDGE LINES, GORE LINES, AND DIAGONAL LINES ON BITUMINOUS PAVEMENT ONLY.
2. PREFORMED PLASTIC TYPE B PAVEMENT MARKING LINE SHALL BE USED FOR ALL LANE LINES ON BITUMINOUS PAVEMENT
3. POLYUREA PAVEMENT MARKING SHALL BE USED FOR ALL MARKINGS ON PCC

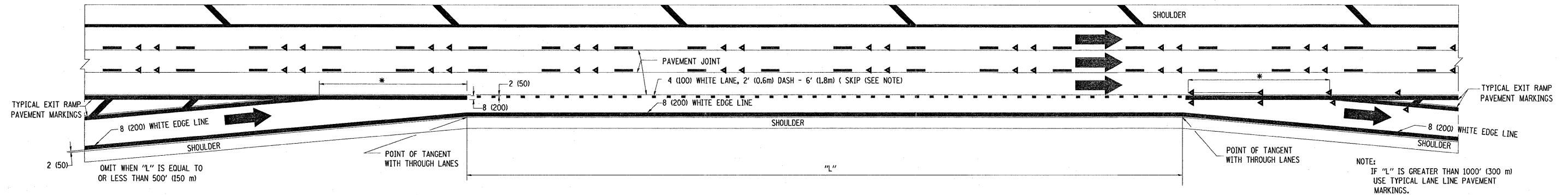


TYPICAL EXIT RAMP PAVEMENT MARKINGS

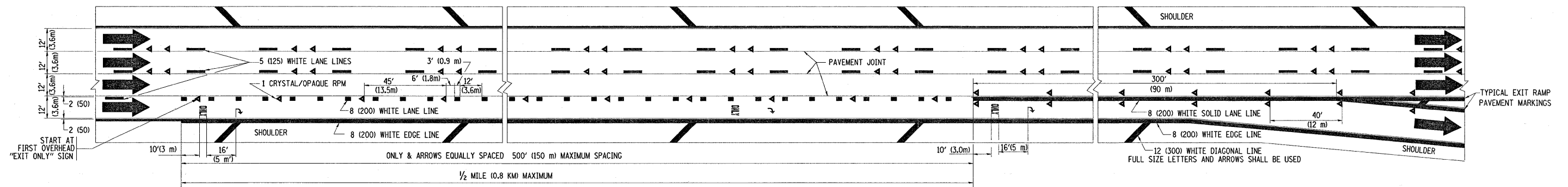


TYPICAL ENTRANCE RAMP PAVEMENT MARKINGS

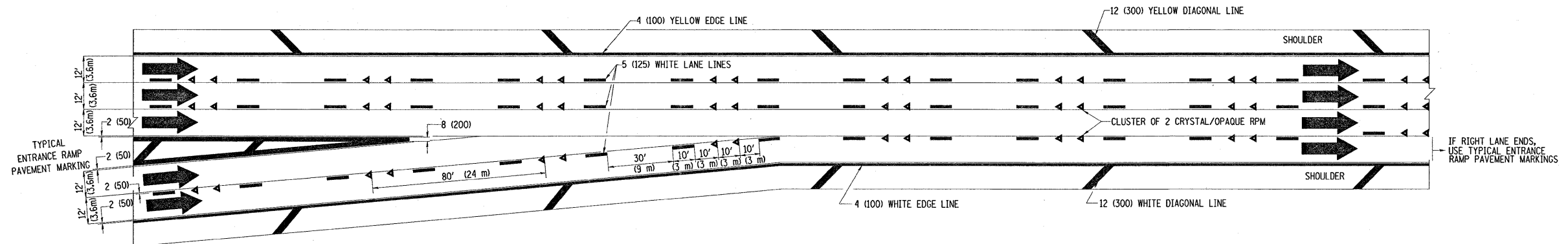
FILE NAME = c:\pw_work\PWIDOT\MOSSSE\d0104195\DistS	USER NAME = mossse	DESIGNED - D.W.S.	REVISED - A.H. 03-96	STATE OF ILLINOIS DEPARTMENT OF TRANSPORTATION	MULTI-LANE FREEWAY PAVEMENT MARKING DETAILS		F.A. RTE. 90/94	SECTION 2008-070 RS	COUNTY COOK	TOTAL SHEETS 13	SHEET NO. 10	
	PLOT SCALE = 50.0000" / IN.	DRAWN -	REVISED - D.W.S. 07-96		SCALE: NONE	SHEET NO. 1 OF 2 SHEETS	STA. TO STA.	TC-12		CONTRACT NO.		
	PLOT DATE = 12/18/2008	CHECKED -	REVISED - J.A.F. 02-06						FED. ROAD DIST. NO. 1 [ILLINOIS] FED. AID PROJECT			
		DATE - 01-90	REVISED - S.P.B. 01-07									



TYPICAL ENTRANCE/EXIT RAMP COMBINATION PAVEMENT MARKINGS



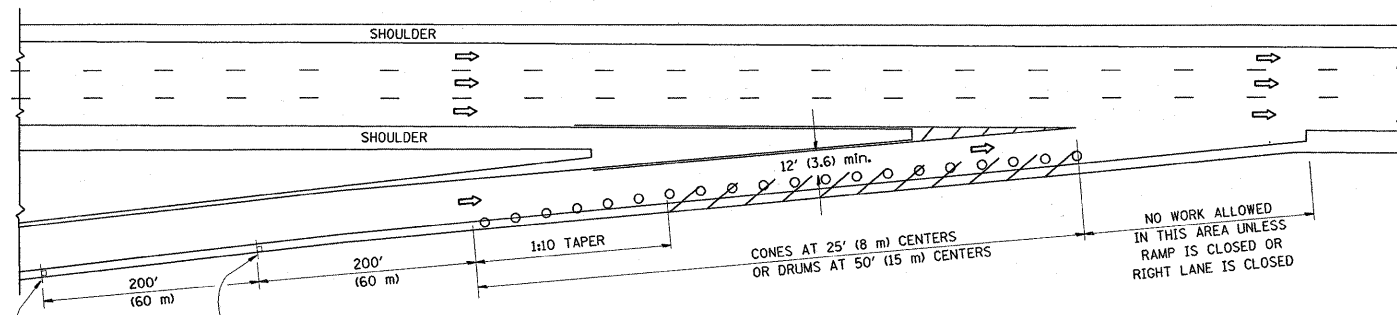
TYPICAL EXIT ONLY LANE PAVEMENT MARKINGS



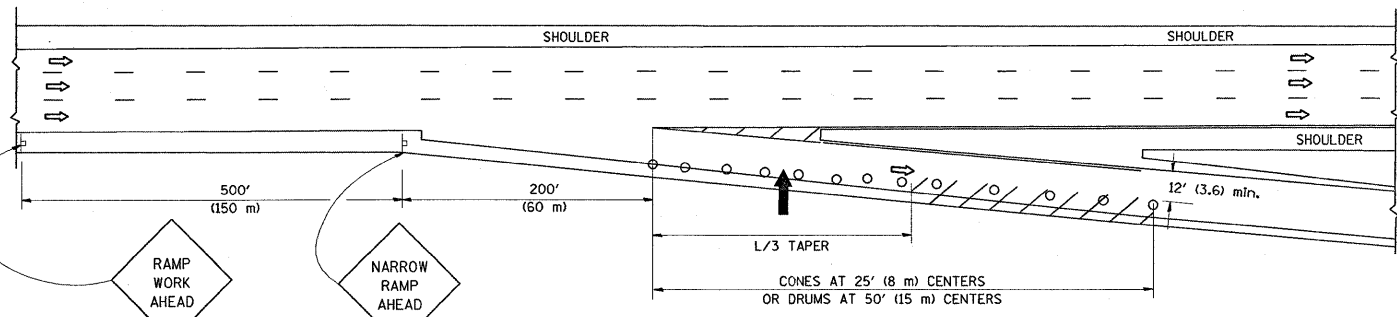
TYPICAL TWO LANE ENTRANCE RAMP PAVEMENT MARKINGS

FILE NAME =	USER NAME = mossse	DESIGNED - D.W.S.	REVISED - A.H. 03-96	STATE OF ILLINOIS DEPARTMENT OF TRANSPORTATION	MULTI-LANE FREEWAY PAVEMENT MARKING DETAILS			F.A. RTE.	SECTION	COUNTY	TOTAL SHEETS	SHEET NO.	
ct:\pw_work\PWIDOT\MOSSSE\0104195\01.sts	d.dgn	DRAWN -	REVISED - D.W.S. 07-96					90/94	2008-070 RS	COOK	13	11	
PLOT SCALE = 50.0000' / IN.	CHECKED -	REVISED - J.A.F. 02-06	SCALE: NONE					SHEET NO. 2 OF 2 SHEETS	STA.	TO STA.	TC-12		CONTRACT NO.
PLOT DATE = 12/18/2008	DATE - 01-90	REVISED - S.P.B. 01-07								FED. ROAD DIST. NO. 1 ILLINOIS FED. AID PROJECT			

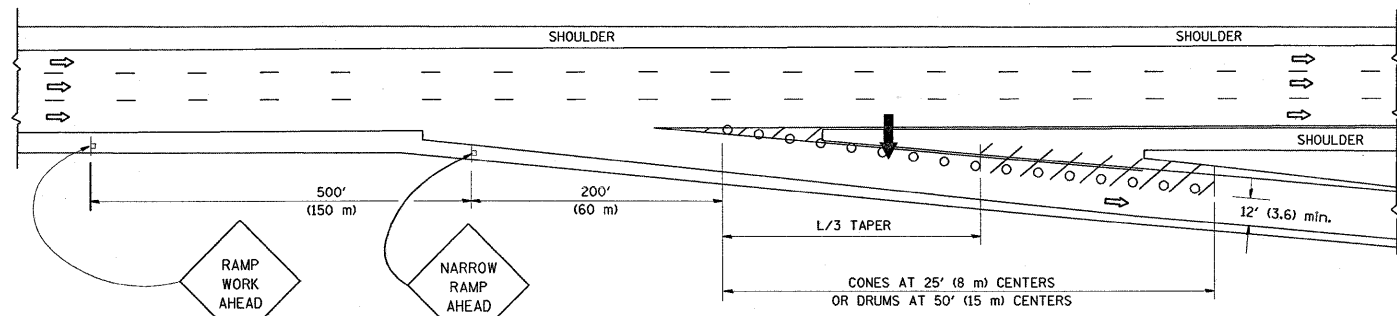
PARTIAL RAMP CLOSURE DETAILS



TYPICAL ENTRANCE RAMP



TYPICAL EXIT RAMP



TYPICAL EXIT RAMP

SYMBOLS

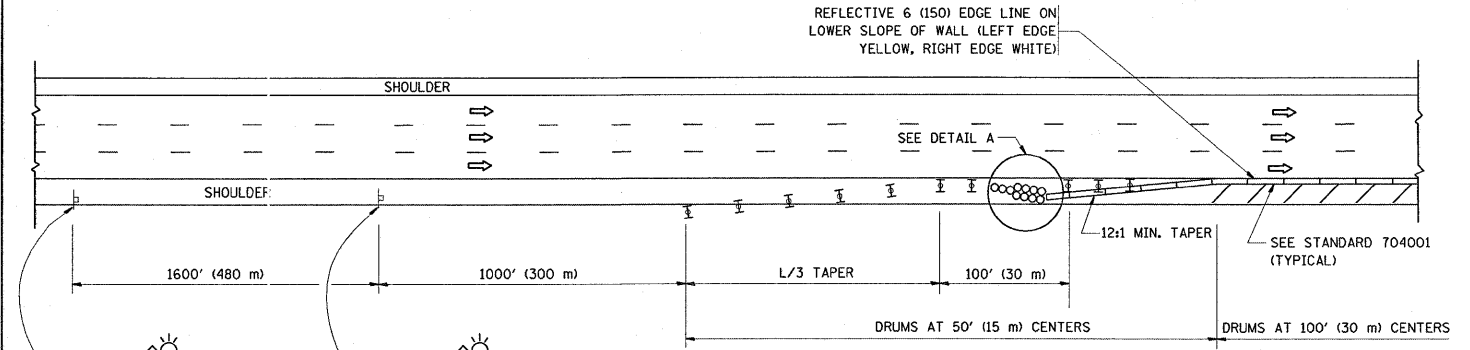
- ➔ ARROWBOARD
- ▨ WORK AREA
- ⊥ SIGN ON PORTABLE OR PERMANENT SUPPORT
- FLAGGER WITH CONTROL SIGN
- ⊥ TYPE II BARRICADE, DRUM OR VERTICAL BARRICADE WITH STEADY BURN MONO-DIRECTIONAL LIGHT
- CONE, DRUM OR BARRICADE

GENERAL NOTES

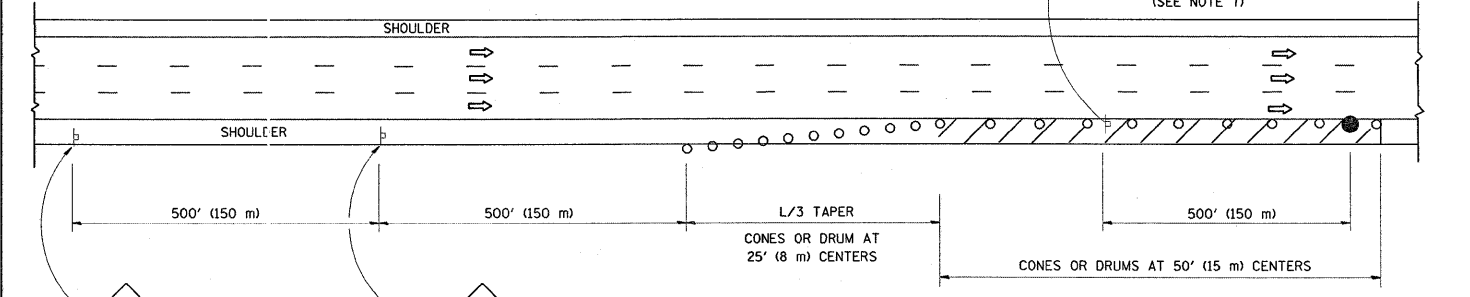
1. THE "L" DISTANCE EQUALS:

SPEED LIMIT	FORMULAS
45 mph (80 km/h)	METRIC ENGLISH
OR GREATER:	$L=0.65(WXS)$ $L=(WXS)$
	W = WIDTH OF OFFSET IN FEET (METERS)
	S = NORMAL POSTED SPEED MPH (KM/H)
2. PLASTIC DRUMS WITH HIGH PERFORMANCE REFLECTIVE SHEETING AND STEADY BURNING LIGHTS ARE REQUIRED FOR ALL NIGHTTIME CLOSURES.
3. ALL SIGNS SHALL BE POST MOUNTED IF THE CLOSURE TIME EXCEEDS FOUR DAYS.
4. FLASHING LIGHTS SHALL BE USED DURING THE HOURS OF DARKNESS AND SHALL BE INSTALLED ABOVE THE FIRST TWO SETS OF SIGNS.

SHOULDER CLOSURE DETAILS

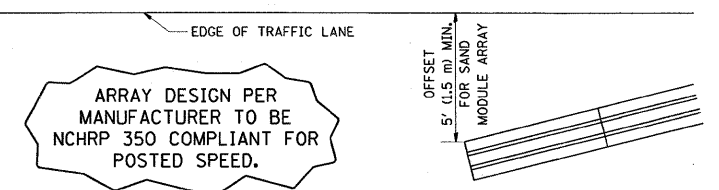


PERMANENT SHOULDER CLOSURE



DAYTIME SHOULDER CLOSURE

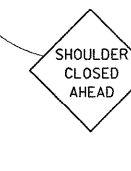
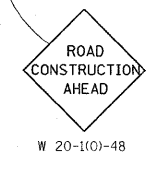
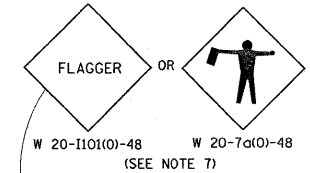
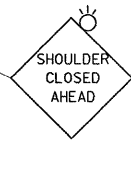
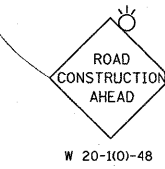
THIS DETAIL IS USED WHERE:
 1. VEHICLES, EQUIPMENT, WORKERS OR THEIR ACTIVITIES ENCR OACH IN AN AREA CLOSER THAN 15' (4.5 m) TO THE EDGE OF PAVEMENT FOR A PERIOD IN EXCESS OF 15 MINUTES.



ARRAY DESIGN PER MANUFACTURER TO BE NCHRP 350 COMPLIANT FOR POSTED SPEED.

DETAIL "A" IMPACT ATTENUATOR, TEMPORARY (SEE NOTE 5)

ALL DIMENSIONS ARE IN INCHES (MILLIMETERS) UNLESS OTHERWISE SHOWN.



FILE NAME =	USER NAME = mossse	DESIGNED -	REVISED - J.A.F. 12-02	STATE OF ILLINOIS DEPARTMENT OF TRANSPORTATION	TRAFFIC CONTROL DETAILS FOR FREEWAY SHOULDER CLOSURES AND PARTIAL RAMP CLOSURES	F.A. RTE. 90/94	SECTION 2008-070 RS	COUNTY COOK	TOTAL SHEETS 13	SHEET NO. 13	
		DRAWN - D.W.S.	REVISED - 04-03			SCALE: NONE	SHEET NO. 1 OF 1 SHEETS	STA. TO STA.	TC-17		CONTRACT NO.
		CHECKED -	REVISED - J.A.F. 12-06			FED. ROAD DIST. NO. 1 ILLINOIS FED. AID PROJECT					
		DATE - 11-96	REVISED - S.P.B. 01-07								