

F.A.P. RTE.	SECTION	COUNTY	TOTAL SHEETS	SHEET NO.
343	631T	COOK	33*	1
FED. ROAD DIST. NO.	ILLINOIS	CONTRACT NO. 62710		

*33+1=34

D-91-100-04



LOCATION OF SECTION INDICATED THUS: —

STATE OF ILLINOIS
DEPARTMENT OF TRANSPORTATION
DIVISION OF HIGHWAYS

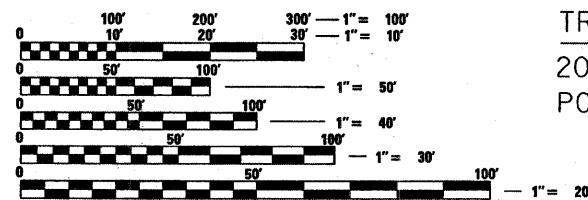
**PROPOSED
HIGHWAY PLANS**

F.A.P. ROUTE 343: IL RTE. 68 (DUNDEE RD.)
OVER SPRING CREEK
SECTION: 631T
CULVERT REPLACEMENT
PROJECT: F-0343(016)
COOK COUNTY
C-91-100-04

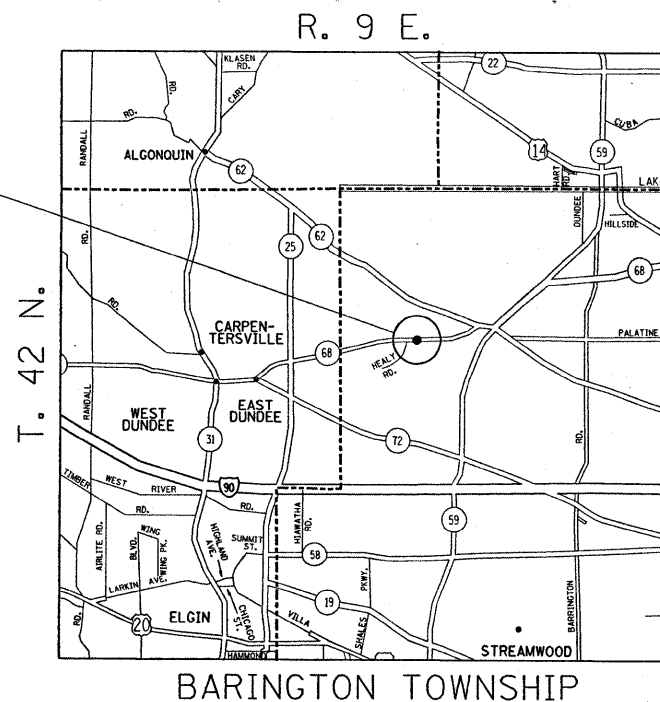
FOR INDEX OF SHEETS, SEE SHEET NO. 2

PROJECT LOCATED IN THE
VILLAGE OF BARRINGTON HILLS

LOCATION OF PROJECT
IL RTE. 68 (DUNDEE ROAD)
OVER SPRING CREEK



TRAFFIC DATA
2007 ADT = 8,200
POSTED SPEED = 55 MPH



IL 68 OVER SPRING CREEK
EXISTING SN: 016-1035
PROPOSED SN: 016-2811
REMOVE EXISTING TWO
CELL BOX CULVERT
AND CONSTRUCT THREE
CELL BOX CULVERT 12' X 7'



FULL SIZE PLANS HAVE BEEN PREPARED USING STANDARD
ENGINEERING SCALES. REDUCED SIZED PLANS WILL NOT
CONFORM TO STANDARD SCALES. IN MAKING MEASUREMENTS
ON REDUCED PLANS, THE ABOVE SCALES MAY BE USED.

J.U.L.I.E.
JOINT UTILITY LOCATION INFORMATION FOR EXCAVATION
1-800-892-0123
OR 811

PROJECT ENGINEER: J.P. CHANG (847) 705-4432
PLAN PREPARATION ENGINEER: KEN ENG

GROSS & NET LENGTH OF PROJECT = 400 FEET = 0.08 MILE

CONTRACT NO. 62710

STATE OF ILLINOIS
DEPARTMENT OF TRANSPORTATION
DIVISION OF HIGHWAYS

SUBMITTED DECEMBER 15, 2008
Diane M. O'Keefe DE
DEPUTY DIRECTOR OF HIGHWAYS, REGION ENGINEER

January 30, 2009
Charles G. Ingersoll
ENGINEER OF DESIGN AND ENVIRONMENT

January 30, 2009
Christine M. Reed
DIRECTOR OF HIGHWAYS, CHIEF ENGINEER

**PRINTED BY THE AUTHORITY
OF THE STATE OF ILLINOIS**