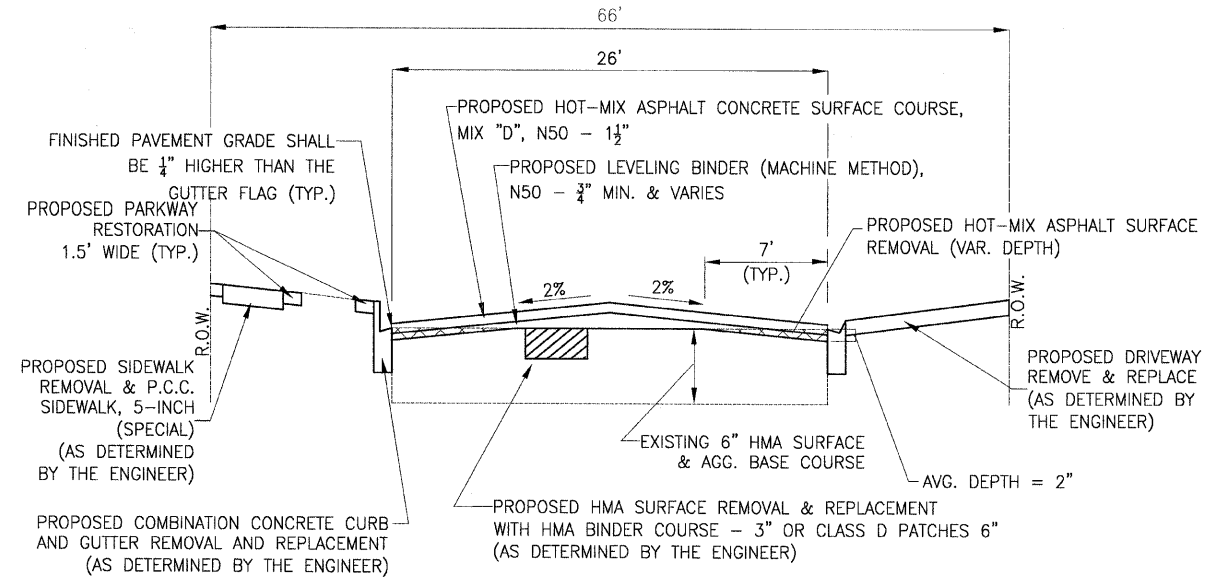


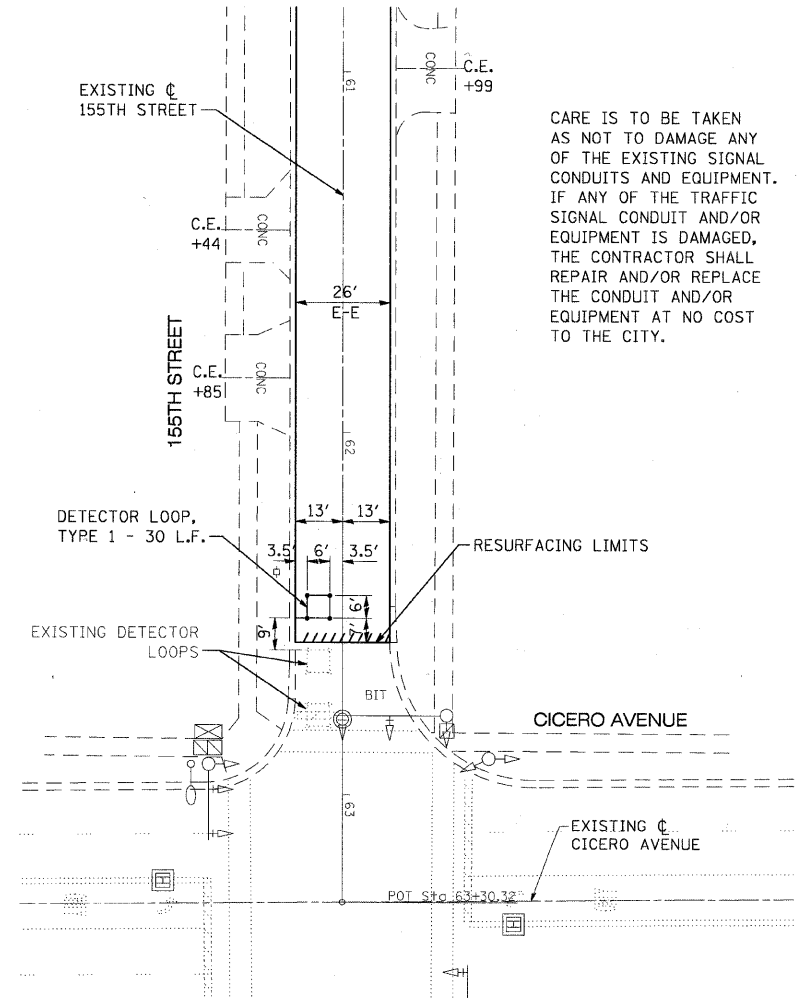
F.A.U. RTE.	SECTION	COUNTY	TOTAL SHEETS	SHEET NO.
COOK	08-00092-00-RS	COOK	15	5
STA.		TO STA.		
FED. ROAD DIST. NO.	ILLINOIS	FED AID PROJECT		
C-91-487-08		M-9003 (066)		

CONTRACT NO. 63086



HOT-MIX ASPHALT MIXTURE REQUIREMENTS

ITEM	AC TYPE	AIR VOIDS
PATCHING		
CLASS D PATCHES, 6" (HMA BINDER IL-19 mm)	PG 64-22*	4% @ 70 Gyr
HMA SURFACE REMOVAL AND REPLACEMENT 3" (HMA BINDER IL-19.0 mm)	PG 64-22*	4% @ 70 Gyr
ROADWAY RESURFACING		
HOT-MIX ASPHALT SURFACE COURSE, MIX "D", N50 (IL 9.5 mm)	PG 64-22	4% @ 50 Gyr
LEVELING BINDER (MACHINE METHOD), N50 (IL 9.5 mm)	PG 64-22*	4% @ 50 Gyr
DRIVEWAYS		
HMA SURFACE COURSE, MIX "C", N50 (IL 9.5 mm)	PG 64-22	4% @ 50 Gyr
THE UNIT WEIGHT USED TO CALCULATE ALL HOT-MIX ASPHALT SURFACES IS 112 LBS/SQ YD/IN.		
* WHEN RAP EXCEEDS 20%, THE NEW ASPHALT BINDER IN THE MIX SHALL BE PG58-22.		



DETECTOR LOOP REPLACEMENT DETAIL

QC/QA HMA MIXTURES SCHEDULE

QC/QA HMA PAY ITEMS	TONS
CLASS D PATCHES	1315
LEVELING BINDER (MACHINE METHOD), N50	690
HMA SURFACE COURSE, MIX "D" N50	1380
HMA SURFACE REMOVAL AND REPLACEMENT, 3"	240
HMA DRIVEWAY SURFACE REMOVAL AND REPLACEMENT	20
TOTAL QC/QA HMA QUANTITY (TONS)	3,645

COPYRIGHT © 2008 BY BAXTER & WOODMAN, INC. 481 TORVALE ST. SUITE 100, OAK FOREST, ILLINOIS 60451-1000
 1/18/2008 11:03:44 AM I:\COOK\11-080385 - 155th_lapp\cadd-surf\vel\dr-awings\cogn\080385-TYPSEC.dwg
 34764 PM



DESIGNED - CAC	REVISED -
DRAWN - BCD	REVISED -
CHECKED - TMS	REVISED -
DATE - 11-14-08	REVISED -

CITY OF OAK FOREST, ILLINOIS
FAU 1021 155TH STREET (LAPP) RESURFACING
SECTION 08-00092-00-RS

EXISTING AND PROPOSED TYPICAL SECTIONS

SCALE: NONE STA. TO STA.

F.A. RTE.	SECTION	COUNTY	TOTAL SHEETS	SHEET NO.
1021	08-00092-00-RS	COOK	15	5
FED. ROAD DIST. NO.		ILLINOIS FED. AID PROJECT		