

FOR INDEX OF SHEETS, SEE SHEET NO. 2

FOR INDEX OF HIGHWAY STANDARDS, SEE SHEET NO. 2

PROJECT LOCATED IN THE CITY OF OAK FOREST

STATE OF ILLINOIS DEPARTMENT OF TRANSPORTATION DIVISION OF HIGHWAYS

PLANS FOR PROPOSED FEDERAL AID HIGHWAY FAU 1021 155TH STREET

FAU 2795 CENTRAL AVENUE TO FAP 350 ILLINOIS ROUTE 50 (CICERO AVENUE) RESURFACING

PROJECT NO.: M-9003 (066) SECTION: 08-00092-00-RS JOB NO.: C-91-487-08 CITY OF OAK FOREST COOK COUNTY

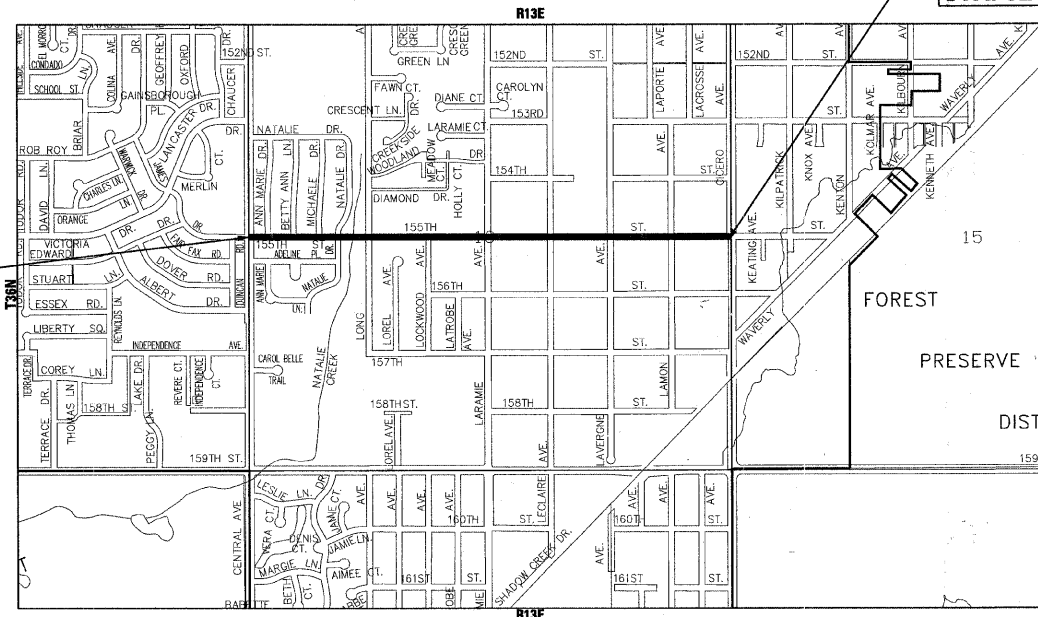
LOCATION: FAU 1021 155TH STREET PROJECT ENDS STA. 62 + 58

TRAFFIC DATA POSTED & DESIGN SPEED LIMIT = 30 MPH 2006 ADT = 2,200 VPD

BAXTER & WOODMAN, INC. STATE OF ILLINOIS - PROFESSIONAL DESIGN FIRM LICENSE NO. - 184-001121 - EXPIRES 4/30/2009

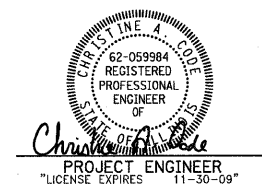
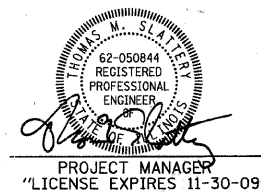
DESIGN DESIGNATION COLLECTOR

LOCATION: FAU 1021 155TH STREET PROJECT BEGINS STA. 10 + 73



LOCATION MAP (NOT TO SCALE)

BREMEN TOWNSHIP GROSS LENGTH OF IMPROVEMENT = 5,185 LF OR 0.982 MILES NET LENGTH OF IMPROVEMENT = 5,185 LF OR 0.982 MILES



LOCATION OF SECTION INDICATED THIS: [Symbol]

STATE OF ILLINOIS DEPARTMENT OF TRANSPORTATION DIVISION OF HIGHWAYS

APPROVED 11/19/08 [Signature] DIRECTOR OF PUBLIC WORKS PASSED December 16, 2008 [Signature] DISTRICT 1 ENGINEER OF LOCAL ROADS & STREETS RELEASING FOR BID BASED ON LIMITED REVIEW DECEMBER 17, 2008 [Signature] DEPUTY DIRECTOR OF HIGHWAYS, REGION 1 ENGINEER

PRINTED BY THE AUTHORITY OF THE STATE OF ILLINOIS

FULL SIZE PLANS HAVE BEEN PREPARED USING STANDARD ENGINEERING SCALES. REDUCED SIZED PLANS WILL NOT CONFORM TO STANDARD SCALES. IN MAKING MEASUREMENTS ON REDUCED PLANS, THE ABOVE SCALES MAY BE USED.

J.U.L.I.E. JOINT UTILITY LOCATION INFORMATION FOR EXCAVATION 1-800-892-0123

CONTRACT NO. 63086

Burlington, Wisconsin 262.763.7834 Crystal Lake, Illinois 815.459.1260 DeKalb, Illinois 815.787.3111 Itasca, Illinois 630.773.1870 Mokena, Illinois 708.560.7070 Graylake, Illinois 815.609.7425 Plainfield, Illinois 815.489.1551 Rockford, Illinois 608.347.1542 Madison, Wisconsin 312.578.0050 Chicago, Illinois B&W PROJECT NO.: 080385.40 DATE: 11-14-08

COPYRIGHT © 2008 BY BAXTER & WOODMAN, INC. LICENSE NO. 184-001121 - EXPIRES 4/30/2009 5666cc 11/17/2008 BUREAU OF LOCAL ROADS AND STREETS-MELCHOR MANGOBA 847-705-4408

GENERAL NOTES

1. THE CONTRACTOR SHALL PROTECT AND CAREFULLY PRESERVE ALL SECTION OR SUBSECTION MONUMENTS OR PROPERTY OR REFERENCE MARKERS UNTIL THE OWNER, HIS AGENT OR AN AUTHORIZED SURVEYOR HAS WITNESSED OR OTHERWISE REFERENCED THEIR LOCATIONS.
2. ALL LOCATIONS OF PUBLIC AND PRIVATE UTILITIES SHOWN ON PLANS ARE APPROXIMATE. THE CONTRACTOR SHALL BE RESPONSIBLE FOR CONTACTING THE OWNERS OF ALL EXISTING UTILITIES SO THAT THE UTILITIES AND THEIR APPURTENANCES MAY BE LOCATED AND ADJUSTED OR MOVED, IF NECESSARY, PRIOR TO THE START OF CONSTRUCTION OPERATIONS. THE CONTRACTOR SHALL COOPERATE WITH ALL UTILITY OWNERS AS PROVIDED IN THE STANDARD SPECIFICATIONS.
3. THE CONTRACTOR SHALL BE RESPONSIBLE FOR THE PROTECTION OF ALL UNDERGROUND OR SURFACE UTILITIES EVEN THOUGH THEY MAY NOT BE SHOWN ON THE PLANS. ANY UTILITY THAT IS DAMAGED DURING CONSTRUCTION SHALL BE REPAIRED TO THE SATISFACTION OF THE ENGINEER OR THE OWNER OR REPLACED. THIS WORK SHALL BE AT THE CONTRACTOR'S EXPENSE.
4. ALL SAW CUTTING SHALL BE INCLUDED IN THE UNIT COST OF THE PAY ITEM INDICATED FOR REMOVAL.
5. ALL CONSTRUCTION PERSONNEL WILL BE REQUIRED TO WEAR A FLUORESCENT VEST PER ARTICLE 701.12 AND 701.13 OF THE STANDARD SPECIFICATIONS AT ALL TIMES WHILE ON THE CONSTRUCTION SITE. COMPLIANCE WITH THIS REQUIREMENT SHALL BE INCLUDED IN THE CONTRACT.
6. NO STREET CLOSURES WILL BE ALLOWED.
7. THE CONTRACTOR SHALL REPLACE ALL STREET SIGNS AND MAIL BOXES REMOVED DURING CONSTRUCTION AS NEAR AS POSSIBLE TO THEIR ORIGINAL LOCATION OR AS DETERMINED BY THE ENGINEER. THIS WORK SHALL BE INCLUDED IN THE CONTRACT.
8. ALL OPEN HOLE, BROKEN PAVEMENT AND TRENCHES RESULTING FROM STRUCTURE ADJUSTMENTS, OR CURB REPAIRS WORK SHALL BE BACKFILLED TO GRADE BY THE END OF THE DAY.
9. BEFORE STARTING ANY EXCAVATION, THE CONTRACTOR SHALL CALL "JULIE" AT 800-892-0123 FOR FIELD LOCATIONS OF BURIED ELECTRIC, TELEPHONE AND GAS FACILITIES. (48 HOURS NOTIFICATION IS REQUIRED)
10. 10 FEET TRANSITIONS SHALL BE USED TO MATCH PROPOSED CURB AND GUTTER AND MEDIAN ITEMS OF WORK TO EXISTING CURB AND GUTTER AND MEDIANS IN THE FIELD, UNLESS OTHERWISE SHOWN. THE TRANSITIONS SHALL BE PAID FOR AT THE CONTRACT UNIT PRICE FOR THE PROPOSED ITEMS OF WORK SPECIFIED.
11. THE CONTRACTOR SHALL COORDINATE CONSTRUCTION ACTIVITIES WITH THE UTILITY COMPANIES AND THE CITY OF OAK FOREST PUBLIC WORKS DEPARTMENT, BAXTER AND WOODMAN, INC.
12. BARRICADE: THE CONTRACTOR SHALL PROVIDE AND INSTALL TWO (2) WEIGHTED SANDBAGS ON EACH TYPE I OR TYPE II BARRICADE USED - ONE (1) WEIGHTED SANDBAGS ACROSS EACH BOTTOM RAIL.
13. BUTT JOINTS WILL BE INSTALLED AT THE ENDS OF ALL RESURFACING (WHERE RESURFACING MEETING EXISTING PAVEMENT), IN ACCORDANCE WITH THE "BUTT JOINT AND HMA TAPER DETAILS" SHEET INCLUDED IN THE PLANS, UNLESS OTHERWISE SPECIFIED.
14. DRIVEWAYS SHALL REMAIN ACCESSIBLE DURING THE ENTIRE DURATION OF THE PROJECT.
15. THE CONTRACTOR SHALL NOTIFY CITY PUBLIC WORKS AT LEAST 48 HOURS IN ADVANCE OF BEGINNING WORK TO OBTAIN CITY UTILITY LOCATIONS AND SHALL COORDINATE ALL CONSTRUCTION OPERATIONS WITH THE ENGINEER.
16. MATERIALS RESULTING FROM THE REMOVAL OF PAVEMENT, DRIVEWAYS, CURB AND GUTTER, HOT-MIX ASPHALT SURFACES, ETC. SHALL BE REMOVED AT THE END OF EACH DAY TO AN APPROVED SITE. IN THE JUDGMENT OF THE CITY, SHOULD IT BE NECESSARY TO REMOVE SUCH MATERIALS, THE CITY WILL HAVE THE MATERIAL REMOVED AND THE CONTRACTOR WILL BE BILLED (CHARGED) ACCORDINGLY.
17. THE CONTRACTOR MAY OBTAIN MUNICIPAL WATER IN BULK, AT NO CHARGE, AS LONG AS THERE IS NOT A "WATERING" BAN IN EFFECT. THE INDISCRIMINATE USE OF FIRE HYDRANTS IS STRICTLY PROHIBITED. WATER FOR CONSTRUCTION SHALL BE METERED OR OTHERWISE ACCOUNTED FOR AND A DAILY LOG MAINTAINED. THE CONTRACTOR SHALL PROVIDE THE WATER TRUCK AND DRIVER REQUIRED TO OBTAIN AND TRANSPORT THIS WATER. THE CITY RESERVES THE RIGHT TO RESTRICT OR REFUSE THE USE OF CITY WATER IF DEEMED NECESSARY.
18. IT WILL BE THE CONTRACTOR'S RESPONSIBILITY TO NOTIFY RESIDENTS AND THE CITY WHEN ACCESS TO THEIR DRIVEWAYS WILL BE TEMPORARILY CLOSED DUE TO CURB AND GUTTER AND/OR DRIVEWAY REPLACEMENT. THE CONTRACTOR SHALL DISTRIBUTE NOTICES PROVIDED BY THE CITY TO RESIDENTS. EVERY EFFORT SHALL BE MADE TO ACCOMMODATE ACCESS TO THESE PROPERTIES INCLUDING KNOCKING ON DOORS WHEN DRIVEWAYS ARE ABOUT TO BE CLOSED.
19. IN AREAS WHERE THE EXISTING DRIVEWAY OR SIDEWALK TO BE REMOVED AND REPLACED, THE REMOVAL AND DISPOSAL OF ANY ADDITIONAL MATERIAL REQUIRED TO ESTABLISH THE PROPOSED DRIVEWAY SUBGRADE ELEVATION SHALL BE INCLUDED IN THE PAY ITEM FOR PORTLAND CEMENT CONCRETE DRIVEWAY REMOVAL AND REPLACEMENT.
20. THE CONTRACTOR SHALL LIMIT THE WORK TO ONE SIDE OF THE STREET UNLESS AS DIRECTED OTHERWISE BY THE ENGINEER.

21. ALL CONSTRUCTION SHALL BE DONE IN ACCORDANCE WITH THE DETAILS IN THE PLANS, THE SPECIAL PROVISIONS INCLUDED IN THE CONTRACT DOCUMENTS, AND THE LATEST EDITION OF THE FOLLOWING STATE OF ILLINOIS SPECIFICATIONS: "THE STANDARD SPECIFICATIONS FOR ROAD AND BRIDGE CONSTRUCTION" (REFERRED TO AS THE "STANDARD SPECIFICATIONS"), THE "SUPPLEMENTAL SPECIFICATIONS AND RECURRING SPECIAL PROVISIONS", THE "MANUAL ON UNIFORM TRAFFIC CONTROL DEVICES FOR STREETS AND HIGHWAYS", THE "MANUAL OF TEST PROCEDURES FOR MATERIALS" AND THE "STANDARD SPECIFICATIONS FOR WATER AND SEWER MAIN CONSTRUCTION IN ILLINOIS".

F.A.U. RTE.	SECTION	COUNTY	TOTAL SHEETS	SHEET NO.
COOK	08-00092-00-RS	COOK	15	2
STA.		TO STA.		
FED. ROAD DIST. NO.	ILLINOIS	FED AID PROJECT		
C-91-487-08		M-9003 (066)		

CONTRACT NO. 63086

INDEX OF SHEETS

SHEET NO.	TITLE
1	COVER SHEET
2	GENERAL NOTES, INDEX OF SHEETS, HIGHWAY STANDARDS, SUMMARY OF QUANTITIES
3-4	SCHEDULE OF MATERIALS
5	TYPICAL SECTIONS
6-10	PLAN SHEETS
11	TC-10 TRAFFIC CONTROL AND PROTECTION FOR SIDE ROADS, INTERSECTIONS, AND DRIVEWAYS
12	TC-22 TEMPORARY INFORMATION SIGNING
13	BD-24 CURB OR CURB AND GUTTER REMOVAL AND REPLACEMENT
14	BD-32 BUTT JOINT AND HMA TAPER DETAILS
15	TC-13 DISTRICT 1 TYPICAL PAVEMENT MARKINGS

HIGHWAY STANDARDS

000001-05	STANDARD SYMBOLS, ABBREVIATIONS, AND PATTERNS
424001-05	CURB RAMPS FOR SIDEWALKS
442201-03	CLASS C AND D PATCHES
602301-02	INLET - TYPE A
604001-03	FRAMES AND LIDS, TYPE 1
606001-04	CONCRETE CURB TYPE B AND COMBINATION CONCRETE CURB AND GUTTER
701501-05	URBAN LANE CLOSURE, 2L 2W UNDIVIDED
701801-04	LANE CLOSURE MULTILANE 1W OR 2W CROSSWALK OR SIDEWALK CLOSURE
701901-01	TRAFFIC CONTROL DEVICES
886001-01	DETECTOR LOOP INSTALLATIONS
886006-01	TYPICAL LAYOUTS FOR DETECTION LOOPS

SUMMARY OF QUANTITIES

CODE NO.	PAY ITEM	UNIT	QUANTITY CONSTRUCTION CODE 1000
40600100	BITUMINOUS MATERIALS (PRIME COAT)	GALLON	1,642
40600300	AGGREGATE (PRIME COAT)	TON	33
40600400	MIXTURE FOR CRACKS, JOINTS AND FLANGWAYS	TON	2
40600625	LEVELING BINDER (MACHINE METHOD), N50	TON	690
40600895	CONSTRUCTING TEST STRIP	EACH	1
40600982	HOT-MIX ASPHALT SURFACE REMOVAL - BUTT JOINT	SQ YD	1,098
40603335	HOT-MIX ASPHALT SURFACE COURSE, MIX D, N50	TON	1,380
42400200	PORTLAND CEMENT CONCRETE SIDEWALK 5 INCH	SQ FT	3,880
42400800	DETECTABLE WARNINGS	SQ FT	208
44000157	HOT-MIX ASPHALT SURFACE REMOVAL, 2"	SQ YD	1,704
44000198	HOT-MIX ASPHALT SURFACE REMOVAL, VARIABLE DEPTH	SQ YD	5,850
44000600	SIDEWALK REMOVAL	SQ FT	4,165
44001700	COMBINATION CONCRETE CURB AND GUTTER REMOVAL AND REPLACEMENT	FOOT	1,633
44201723	CLASS D PATCHES, TYPE IV, 6"	SQ YD	1,527
44300300	AREA REFLECTIVE CRACK CONTROL TREATMENT, SYSTEM A	SQ YD	13,463
60255500	MANHOLES TO BE ADJUSTED	EACH	1
60266600	VALVE BOXES TO BE ADJUSTED	EACH	2
60260100	INLETS TO BE ADJUSTED	EACH	27
60262700	INLETS TO BE RECONSTRUCTED	EACH	6
60403600	GRATES, SPECIAL	EACH	30
60406000	FRAMES AND LIDS, TYPE 1, OPEN LID	EACH	3
67100100	MOBILIZATION	L SUM	1
70102620	TRAFFIC CONTROL & PROTECTION - STANDARD 701501	L SUM	1
70102640	TRAFFIC CONTROL & PROTECTION - STANDARD 701801	L SUM	1
78000100	THERMOPLASTIC PAVEMENT MARKING - LETTERS AND SYMBOLS	SQ FT	400
78000400	THERMOPLASTIC PAVEMENT MARKING - LINE 6"	FOOT	60
78000600	THERMOPLASTIC PAVEMENT MARKING - LINE 12"	FOOT	785
78000650	THERMOPLASTIC PAVEMENT MARKING - LINE 24"	FOOT	264
88600600	DETECTABLE LOOP REPLACEMENT	FOOT	30
X0321556	SANITARY MANHOLES TO BE ADJUSTED	EACH	19
X0322256	TEMPORARY INFORMATIONAL SIGNING	SQ FT	52
XX000372	TEMPORARY AGGREGATE	TON	15
XX003435	PORTLAND CEMENT CONCRETE DRIVEWAY REMOVAL AND REPLACEMENT	SQ YD	152
XX007278	PARKWAY RESTORATION	SQ YD	756
XX006947	HOT-MIX ASPHALT DRIVEWAY REMOVAL AND REPLACEMENT	SQ YD	165
XX007366	HOT-MIX ASPHALT SURFACE REMOVAL AND REPLACEMENT, 3"	SQ YD	1,429

* DENOTE SPECIALTY ITEM

** INDICATES NON-STANDARD ITEM COVERED BY SPECIAL PROVISION

COPYRIGHT © 2008 BY BAXTER & WOODMAN, INC.
 #PLTDIV48
 STATE OF ILLINOIS - PROFESSIONAL DESIGN FIRM
 ILLINOIS PROFESSIONAL ENGINEERING BOARD
 1/18/2008
 566660



DESIGNED - CAC	REVISED -
DRAWN - BCD	REVISED -
CHECKED - TMS	REVISED -
DATE - 11-14-08	REVISED -

CITY OF OAK FOREST, ILLINOIS
FAU 1021 155TH STREET (LAPP) RESURFACING
SECTION 08-00092-00-RS

GENERAL NOTES, INDEX OF SHEETS
HIGHWAY STANDARDS, SUMMARY OF QUANTITIES

SCALE: NONE

STA. TO STA.

F.A.U. RTE.	SECTION	COUNTY	TOTAL SHEETS	SHEET NO.
1021	08-00092-00-RS	COOK	15	2
FED. ROAD DIST. NO.		ILLINOIS	FED. AID PROJECT	

SIDEWALK REMOVAL					
155TH STREET	LENGTH	WIDTH	AREA		
10+82	10+97	RT	15	5	75
11+09	11+15	RT	6	5	30
11+42	12+20	RT	78	5	390
13+09	13+20	RT	11	5	55
13+58	13+84	RT	26	5	130
14+40	14+45	RT	5	5	25
14+78	14+94	RT	16	5	80
15+95	16+08	RT	13	5	65
17+54	17+59	RT	5	5	25
18+40	18+50	RT	10	5	50
19+00	19+10	RT	10	5	50
19+58	19+63	RT	14	5	70
19+63	19+73	RT	10	5	50
20+00	20+12	RT	12	5	60
20+12	20+17	RT	10	5	50
21+35	21+45	RT	10	5	50
11+03	11+13	LT	10	5	50
11+70	11+80	LT	10	5	50
12+10	12+20	LT	10	5	50
13+25	13+45	LT	20	5	100
13+65	13+80	LT	15	5	75
14+00	14+10	LT	10	5	50
14+62	14+72	LT	10	5	50
15+00	15+10	LT	10	5	50
15+20	15+40	LT	20	5	100
15+47	15+65	LT	18	5	90
15+88	15+93	LT	5	5	25
17+52	17+62	LT	10	5	50
18+00	18+05	LT	10	5	50
19+12	19+17	LT	10	5	50
19+55	19+60	LT	10	5	50
19+60	19+70	LT	10	5	50
20+00	20+15	LT	10	5	50
20+10	20+80	LT	70	5	350
21+05	21+30	LT	25	5	125
23+00	23+05	RT	10	5	50
23+05	23+15	RT	10	5	50
23+47	23+57	RT	10	5	50
23+57	23+62	RT	10	5	50
26+85	26+97	RT	12	5	60
27+75	27+80	RT	5	5	25
30+91	30+96	RT	5	5	25
32+85	33+00	RT	15	5	75
33+80	33+90	RT	10	5	50
22+12	22+37	LT	25	5	125
23+00	23+05	LT	10	5	50
23+05	23+20	LT	15	5	75
23+55	23+65	LT	10	5	50
23+65	23+70	LT	5	10	50
35+28	35+33	RT	5	5	25
35+52	35+62	RT	10	5	50
36+35	36+47	RT	VAR	VAR	168
36+85	36+98	RT	VAR	VAR	57
36+30	36+35	LT	15	5	75
TOTAL					4,165 SQ FT

PORTLAND CEMENT CONCRETE DRIVEWAY REMOVAL AND REPLACEMENT				
155TH STREET	LENGTH	WIDTH	AREA	
14+70	RT	5	17	9.4
17+74	RT	5	12	6.7
19+00	LT	5	23	12.8
27+32	RT	5	22	12.2
27+68	RT	5	17	9.4
33+06	LT	5	24	13.3
35+20	RT	5	15	8.3
46+81	LT	5	18	10.0
58+66	LT	5	24	13.3
59+91	RT	12	23	30.7
60+46	RT	5	19	10.6
60+99	LT	5	27	15.0
TOTAL				152 SQ YD

CLASS D PATCHES, 6"										
STATION	STATION	LENGTH	WIDTH	AREA (SF)	AREA (SY)	TY I	TY II	TY III	TY IV	
32+25	34+04	178	7	1246	138					138
38+42	39+00	58	7	406	45					45
39+77	40+56	79	13	1027	114					114
40+56	41+23	67	26	1742	194					194
41+23	41+99	76	13	988	110					110
41+99	43+12	113	26	2938	326					326
46+58	47+65	107	13	1391	155					155
47+65	48+55	90	13	1170	130					130
48+55	49+63	108	13	1404	156					156
51+11	52+21	110	13	1430	159					159
TOTALS					1,527 SQ YD	0.0	0.0	0.0		1,527

HOT-MIX ASPHALT SURFACE REMOVAL AND REPLACEMENT, 3"						
STATION	STATION	LENGTH	WIDTH	AREA (SF)	AREA (SY)	
36+91	38+42	151	26	3926	436	
39+00	39+77	77	7	539	60	
43+55	44+71	116	7	812	90	
43+55	44+71	116	7	812	90	
45+41	46+58	117	13	1521	169	
49+63	51+11	148	13	1924	214	
53+43	54+56	113	26	2938	326	
61+30	61+60	30	13	390	43	
TOTAL					1,429 SQ YD	

SANITARY MANHOLES TO BE ADJUSTED			
155TH STREET/ANN MARIE DR			
11+75	LT		1
155TH STREET/BETTY ANN LN			
14+55	LT		1
155TH STREET/MICHAEL DR			
17+45	LT		1
155TH STREET			
18+95	LT		1
21+95	RT		1
155TH STREET/LONG AV			
23+09	RT		1
23+46	RT		1
155TH STREET			
26+41	LT		1
30+32	RT		1
34+13	RT		1
155TH STREET/LARAMIE AV			
36+66	CL		1
155TH STREET			
39+98	RT		1
155TH STREET/LE CLAIRE AV			
43+31	CL		1
155TH STREET			
46+65	CL		1
155TH STREET/LAVERGNE AV			
49+98	CL		1
155TH STREET			
52+67	CL		1
54+51	CL		1
155TH STREET/LAMON AV			
56+54	CL		1
155TH STREET			
60+20	CL		1
TOTAL 19 EACH			

HMA DRIVEWAY SURFACE REMOVAL AND REPLACEMENT				
155TH STREET	LENGTH	WIDTH	AREA	
28+43	LT	5.0	40	22.2
32+32	LT	5.0	25	13.9
32+91	RT	5.0	15	8.3
33+22	RT	5.0	15	8.3
33+50	RT	5.0	17	9.4
34+03	RT	5.0	26	14.4
34+20	LT	5.0	19	10.6
35+25	LT	5.0	14	7.8
35+45	LT	5.0	14	7.8
42+39	LT	5.0	15	8.3
44+71	LT	5.0	17	9.4
51+22	LT	5.0	17	9.4
54+32	LT	5.0	22	12.2
55+34	LT	5.0	28	15.6
59+26	RT	5.0	13	7.2
TOTAL				165 SQ YD

MANHOLES TO BE ADJUSTED		
155TH STREET/NATALIE DR		
20+10	LT	1
TOTAL 1 EACH		

VALVE BOXES TO BE ADJUSTED		
155TH STREET		
14+42	RT	1
30+15	LT	1
TOTAL 2 EACH		

INLETS TO BE ADJUSTED			
155TH STREET/MICHAEL DR			
17+96	LT		1
155TH STREET/NATALIE DR			
19+70	LT		1
19+70	RT		1
20+00	LT		1
155TH STREET			
22+02	LT		1
22+02	RT		1
155TH STREET/LONG AV			
23+62	LT		1
155TH STREET			
26+32	LT		1
26+32	RT		1
35+85	LT		1
35+85	RT		1
155TH STREET/LARAMIE AV			
36+36	LT		1
39+47	RT		1
36+95	LT		1
36+95	RT		1
155TH STREET/LE CLAIRE AV			
43+13	LT		1
43+13	RT		1
43+49	RT		1
43+53	LT		1
155TH STREET/LAVERGNE AV			
49+78	LT		1
49+81	RT		1
50+17	RT		1
50+21	LT		1
155TH STREET/LAMON AV			
56+45	RT		1
56+46	LT		1
155TH STREET			
59+88			1
59+88			1
TOTAL 27 EACH			

INLETS TO BE RECONSTRUCTED			
155TH STREET/ANN MARIE DR			
11+74	LT		1
12+18	LT		1
155TH STREET/BETTY ANN LN			
14+64	LT		1
14+70	RT		1
15+07	LT		1
155TH STREET			
17+40	LT		1
TOTAL 6 EACH			

GRATES (SPECIAL), TYPE EJIW 7180 WITH M2 GRATE		
STATION	QUANTITY	
155TH STREET/BETTY ANN LN		
14+64	LT	1
14+70	RT	1
155TH STREET		
17+40	LT	1
155TH STREET		
22+02	LT	1
22+02	RT	1
155TH STREET/LONG AV		
23+62	LT	1
155TH STREET		
26+32	LT	1
26+32	RT	1
35+85	LT	1
35+85	RT	1
155TH STREET/LARAMIE AV		
36+36	LT	1
36+47	RT	1
36+95	LT	1
36+95	RT	1
155TH STREET/LE CLAIRE AV		
43+13	RT	1
43+49	RT	1
43+53	LT	1
155TH STREET/LAVERGNE AV		
49+78	LT	1
49+81	RT	1
50+17	RT	1
50+21	LT	1
155TH STREET/LAMON AV		
56+45	RT	1
TOTAL 22 EACH		

GRATES (SPECIAL), TYPE EJIW 7220 WITH M3 GRATE		
STATION	QUANTITY	
155TH STREET/ANN MARIE DR		
11+74	LT	1
12+18	LT	1
155TH STREET/BETTY ANN LN		
15+07	LT	1
155TH STREET/MICHAEL DR		
17+96	LT	1
155TH STREET/NATALIE DR		
19+70	LT	1
19+70	RT	1
20+00	LT	1
TOTAL 7 EACH		

GRATES (SPECIAL), TYPE EJIW 7020 WITH M2 GRATE	
STATION	QUANTITY
155TH STREET	
59+88	
TOTAL 1 EACH	

HMA SURFACE REMOVAL - BUTT JOINT				
155TH STREET	LENGTH	WIDTH	AREA	
10+73	30	26	86.7	
ANN MARIE DR				
11+85	LT	20	24	53.3
BETTY ANN LN				
14+84	LT	20	24	53.3
MICHAEL DR				
17+74	LT	20	24	53.3
NATALIE DR				
19+85	LT	20	24	53.3
19+85	RT	20	24	53.3
LONG AV				
23+34	RT	20	26	43.3
23+40	LT	20	30	66.7
LOCKWOOD AV				
29+99	RT	20	26	57.8
LARAMIE AV				
33+66	LT	20	30	66.7
33+66	RT	20	34	75.6
LE CLAIRE AV				
43+31	LT	20	26	57.8
43+31	RT	20	26	57.8
LAVERGNE AV				
49+78	LT	20	20	44.4
49+81	RT	20	26	57.8
LAMON AV				
56+45	LT	20	26	57.8
56+46	RT	20	26	57.8
155TH STREET				
63+30	30	26.0	86.7	
TOTAL				1098 SQ YD

COMBINATION CURB AND GUTTER REMOVAL AND REPLACEMENT				
155TH STREET	LENGTH			
11+20	11+30	LT	10	
11+63	11+91	LT	28	
12+09	12+39	LT	30	
14+60	14+70	LT	10	
14+61	14+78	RT	17	
15+03	15+13	LT	10	
17+33	17+73	LT	40	
17+67	17+79	RT	12	
17+93	18+03	LT	10	

F.A.U. RTE.	SECTION	COUNTY	TOTAL SHEETS	SHEET NO.
COOK	08-00092-00-RS	COOK	15	4
STA.		TO STA.		
FED. ROAD DIST. NO. C-91-487-08		ILLINOIS	FED AID PROJECT M-9003 (066)	

CONTRACT NO. 63086

DETECTABLE WARNINGS			
STATION	TYPE	LENGTH	WIDTH
155TH ST/ANN MARIE DR			
11+78	LT	4	2
12+12	LT	4	2
155TH ST/BETTY ANN LN			
14+68	LT	4	2
15+00	LT	4	2
155TH ST/MICHAELE DR			
17+56	LT	4	2
17+92	LT	4	2
155TH ST/NATALIE DR			
19+58	LT	4	2
19+58	RT	4	2
19+71	LT	4	2
19+71	RT	4	2
20+00	LT	4	2
20+00	RT	4	2
20+13	LT	4	2
20+13	RT	4	2
155TH ST/LONG AV			
23+00	LT	4	2
23+00	RT	4	2
23+18	RT	4	2
23+23	LT	4	2
23+50	RT	4	2
23+55	LT	4	2
23+64	RT	4	2
23+68	LT	4	2
155TH ST/LARAMIE AV			
36+33	LT	4	2
36+38	RT	4	2
36+38	RT	4	2
36+88	RT	4	2
			208 SQ YD

PORTLAND CEMENT CONCRETE SIDEWALK 5 INCH					
STATION TO	STATION	DESCRIPTION	LENGTH (FT)	WIDTH (FT)	AREA (SQ YD)
155TH STREET					
10+82	10+97	RT	15	5	75
11+09	11+15	RT	6	5	30
11+42	12+20	RT	78	5	390
13+09	13+20	RT	11	5	55
13+58	13+84	RT	26	5	130
14+40	14+45	RT	5	5	25
14+78	14+94	RT	16	5	80
15+95	16+08	RT	13	5	65
17+54	17+59	RT	5	5	25
18+40	18+50	RT	10	5	50
19+00	19+10	RT	10	5	50
19+58	19+63	RT	14	5	70
19+63	19+73	RT	10	5	50
20+00	20+12	RT	12	5	60
20+12	20+17	RT	10	5	50
21+35	21+45	RT	10	5	50
11+03	11+13	LT	10	5	50
11+70	11+80	LT	10	5	50
12+10	12+20	LT	10	5	50
13+25	13+45	LT	20	5	100
13+65	13+80	LT	15	5	75
14+00	14+10	LT	10	5	50
14+62	14+72	LT	10	5	50
15+00	15+10	LT	10	5	50
15+20	15+40	LT	20	5	100
15+47	15+65	LT	18	5	90
15+88	15+93	LT	5	5	25
17+52	17+62	LT	10	5	50
18+00	18+05	LT	10	5	50
19+12	19+17	LT	10	5	50
19+55	19+60	LT	10	5	50
19+60	19+70	LT	10	5	50
20+00	20+15	LT	10	5	50
20+10	20+80	LT	70	5	350
21+05	21+30	LT	25	5	125
23+00	23+05	RT	10	5	50
23+05	23+15	RT	10	5	50
23+47	23+57	RT	10	5	50
23+57	23+62	RT	10	5	50
26+85	26+97	RT	12	5	60
27+75	27+80	RT	5	5	25
30+91	30+96	RT	5	5	25
32+85	33+00	RT	15	5	75
33+80	33+90	RT	10	5	50
22+12	22+37	LT	25	5	125
23+00	23+05	LT	10	5	50
23+05	23+20	LT	15	5	75
23+55	23+65	LT	10	5	50
23+65	23+70	LT	5	10	50
35+28	35+33	RT	5	5	25
35+52	35+62	RT	10	5	50
36+35	36+47	RT	VAR	VAR	168
36+85	36+98	RT	VAR	VAR	57
36+30	36+35	LT	15	5	75
TOTAL					3,880 SQ YD

COPYRIGHT © 2008 BY BAXTER & WOODMAN, INC. #ELTORW&#
 STATE OF ILLINOIS - PROFESSIONAL DESIGN FIRM
 155TH LAPP RECORD SURVEY DRAWING.dgn 08/03/08 - som.sht
 08/20/08 3:47:03 PM 1550041.080385



DESIGNED	- CAC	REVISED	-
DRAWN	- BCD	REVISED	-
CHECKED	- TMS	REVISED	-
DATE	- 11-14-08	REVISED	-

CITY OF OAK FOREST, ILLINOIS
FAU 1021 155TH STREET (LAPP) RESURFACING
SECTION 08-00092-00-RS

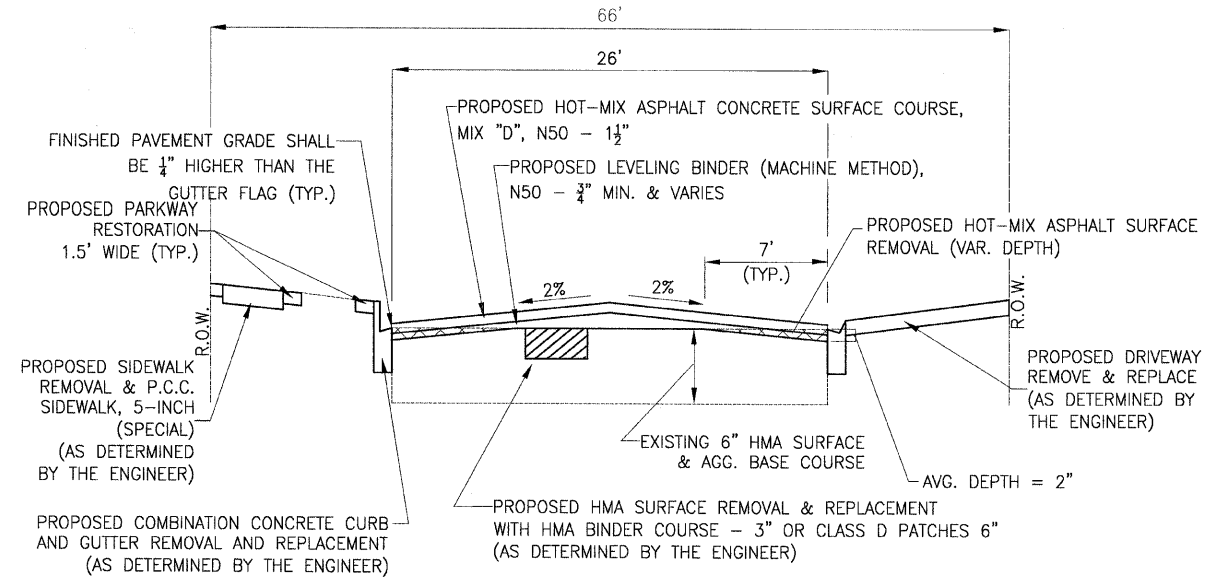
SCHEDULE OF MATERIALS

SCALE: NONE STA. TO STA.

F.A.U. RTE.	SECTION	COUNTY	TOTAL SHEETS	SHEET NO.
1021	08-00092-00-RS	COOK	15	4
FED. ROAD DIST. NO.		ILLINOIS	FED. AID PROJECT	

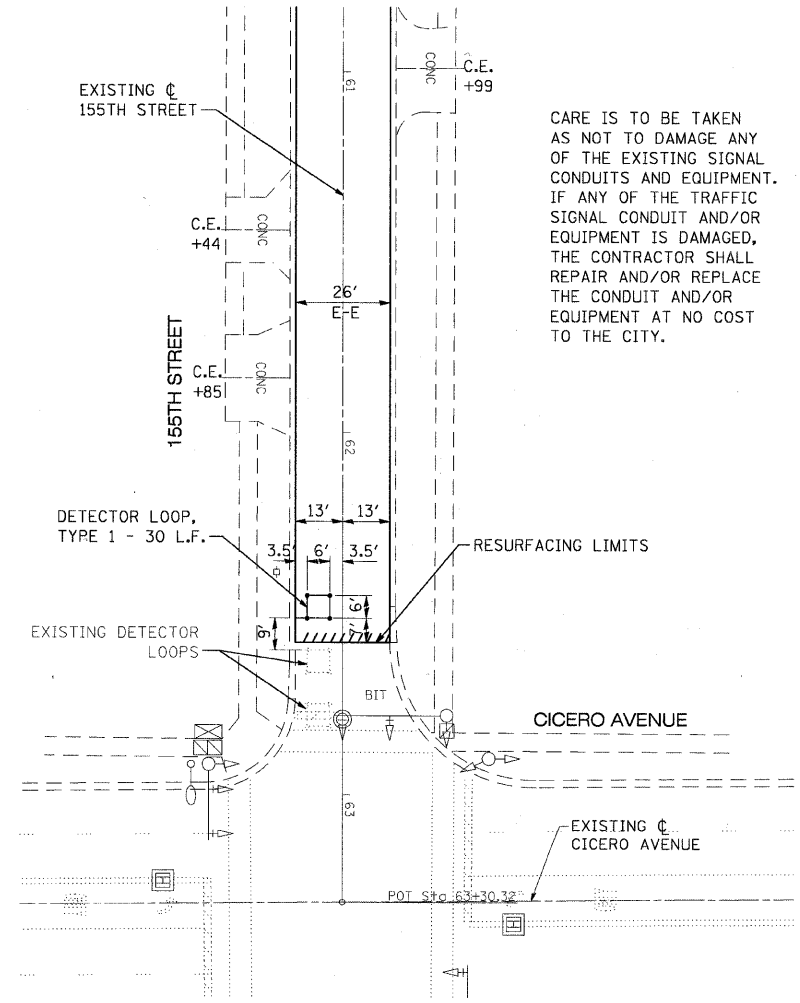
F.A.U. RTE.	SECTION	COUNTY	TOTAL SHEETS	SHEET NO.
COOK	08-00092-00-RS	COOK	15	5
STA.		TO STA.		
FED. ROAD DIST. NO.	ILLINOIS	FED AID PROJECT		
C-91-487-08		M-9003 (066)		

CONTRACT NO. 63086



HOT-MIX ASPHALT MIXTURE REQUIREMENTS

ITEM	AC TYPE	AIR VOIDS
PATCHING		
CLASS D PATCHES, 6" (HMA BINDER IL-19 mm)	PG 64-22*	4% @ 70 Gyr
HMA SURFACE REMOVAL AND REPLACEMENT 3" (HMA BINDER IL-19.0 mm)	PG 64-22*	4% @ 70 Gyr
ROADWAY RESURFACING		
HOT-MIX ASPHALT SURFACE COURSE, MIX "D", N50 (IL 9.5 mm)	PG 64-22	4% @ 50 Gyr
LEVELING BINDER (MACHINE METHOD), N50 (IL 9.5 mm)	PG 64-22*	4% @ 50 Gyr
DRIVEWAYS		
HMA SURFACE COURSE, MIX "C", N50 (IL 9.5 mm)	PG 64-22	4% @ 50 Gyr
THE UNIT WEIGHT USED TO CALCULATE ALL HOT-MIX ASPHALT SURFACES IS 112 LBS/SQ YD/IN.		
* WHEN RAP EXCEEDS 20%, THE NEW ASPHALT BINDER IN THE MIX SHALL BE PG58-22.		



DETECTOR LOOP REPLACEMENT DETAIL

QC/QA HMA MIXTURES SCHEDULE

QC/QA HMA PAY ITEMS	TONS
CLASS D PATCHES	1315
LEVELING BINDER (MACHINE METHOD), N50	690
HMA SURFACE COURSE, MIX "D" N50	1380
HMA SURFACE REMOVAL AND REPLACEMENT, 3"	240
HMA DRIVEWAY SURFACE REMOVAL AND REPLACEMENT	20
TOTAL QC/QA HMA QUANTITY (TONS)	3,645

COPYRIGHT © 2008 BY BAXTER & WOODMAN, INC. 481 TORVALE DRIVE, OAK FOREST, ILLINOIS 60451-1000
 1/18/2008 11:03:44 AM I:\COOK\11-080385 - 155th_lapp\cadd-surf\vel\dr-awings\cogn\080385-TYPSEC.dwg
 34764 PM



DESIGNED - CAC	REVISED -
DRAWN - BCD	REVISED -
CHECKED - TMS	REVISED -
DATE - 11-14-08	REVISED -

CITY OF OAK FOREST, ILLINOIS
FAU 1021 155TH STREET (LAPP) RESURFACING
SECTION 08-00092-00-RS

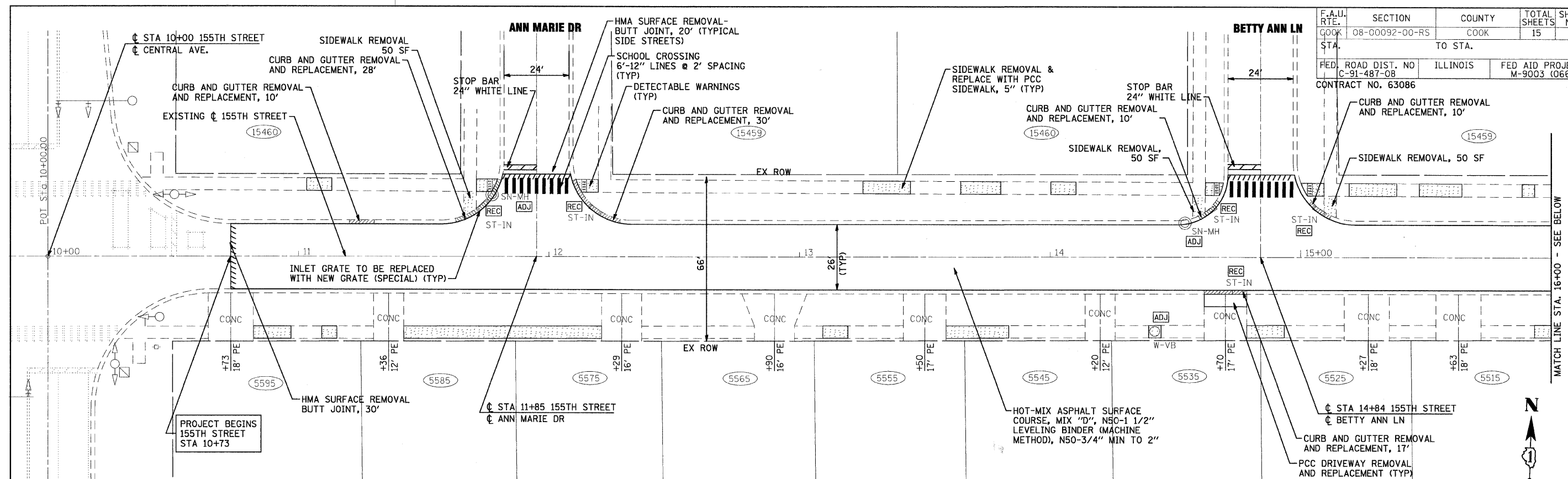
EXISTING AND PROPOSED TYPICAL SECTIONS

SCALE: NONE

STA. TO STA.

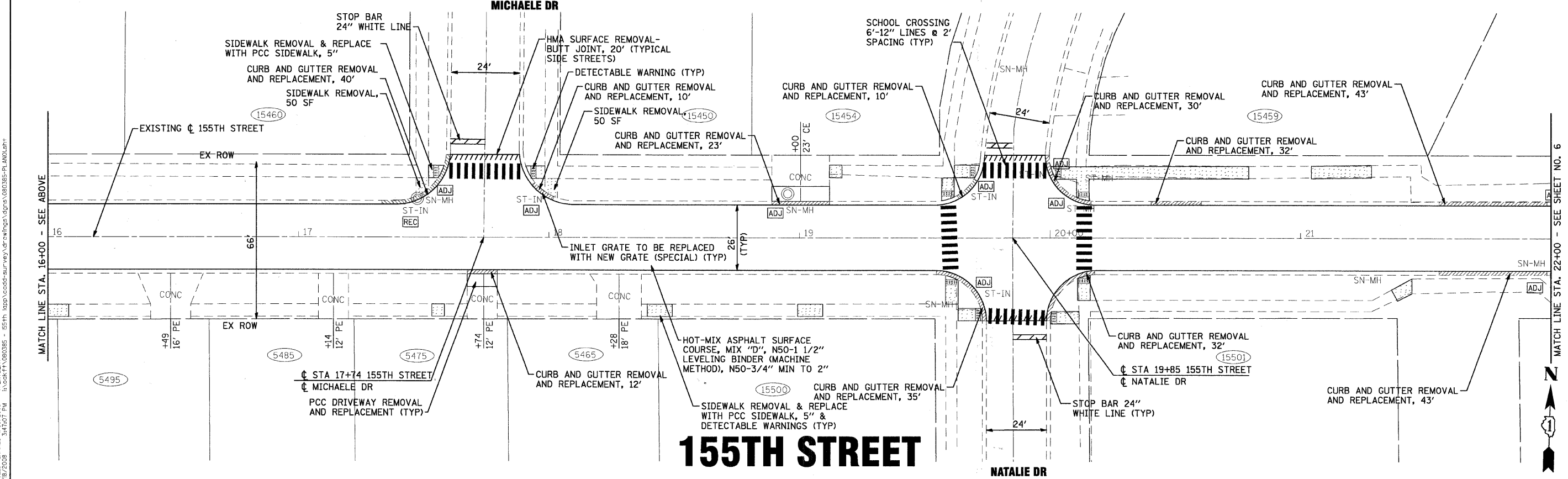
F.A. RTE.	SECTION	COUNTY	TOTAL SHEETS	SHEET NO.
1021	08-00092-00-RS	COOK	15	5
FED. ROAD DIST. NO.		ILLINOIS FED. AID PROJECT		

F.A.U. RTE.	SECTION	COUNTY	TOTAL SHEETS	SHEET NO.
08-00092-00-RS		COOK	15	6
STA.	TO STA.			
FED. ROAD DIST. NO.	ILLINOIS	FED AID PROJECT		
C-91-487-08		M-9003 (066)		
CONTRACT NO. 63086				



155TH STREET

LEGEND:
SEE SHEET NO. 10 FOR LEGEND



155TH STREET

NATALIE DR

CITY OF OAK FOREST, ILLINOIS
FAU 1021 155TH STREET (LAPP) RESURFACING
SECTION 08-00092-00-RS

155TH STREET PLAN

SCALE: 1"=20' STA. 10+00 TO STA. 22+00

F.A.U. RTE.	SECTION	COUNTY	TOTAL SHEETS	SHEET NO.
1021	08-00092-00-RS	COOK	15	6
FED. ROAD DIST. NO. ILLINOIS FED. AID PROJECT				

COPYRIGHT © 2008 BY BAXTER & WOODMAN, INC. #PLTRDVA#
 STATE OF ILLINOIS - PROFESSIONAL DESIGN FIRM
 5466030 11/18/2008 3:47:07 PM H:\00471\080885 - 55th lapp\ccod-surr\ey\dr\wlpgha.dgn\080885-PLAN01.dgn

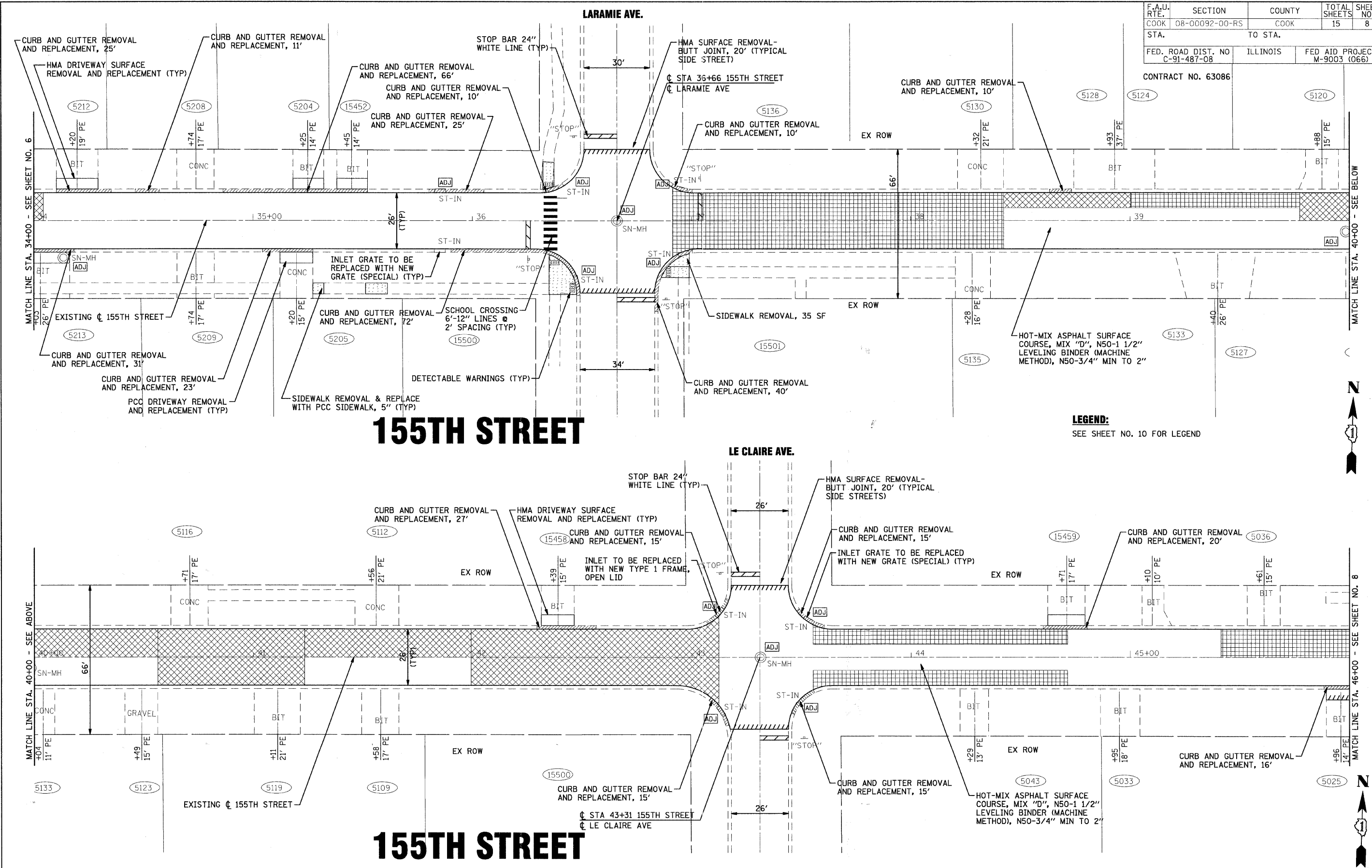


DESIGNED - CAC	REVISED -
DRAWN - BCD	REVISED -
CHECKED - TMS	REVISED -
DATE - 11-14-08	REVISED -

F.A.U. RTE. COOK	SECTION 08-00092-00-RS	COUNTY COOK	TOTAL SHEETS 15	SHEET NO. 8
STA. TO STA.		FED. ROAD DIST. NO. C-91-487-08		
		ILLINOIS	FED AID PROJECT M-9003 (066)	

CONTRACT NO. 63086

HOOL CROSSING
12" LINES @
SPACING (TYP)



LEGEND:
SEE SHEET NO. 10 FOR LEGEND



COPYRIGHT © 2008 BY BAXTER & WOODMAN, INC. #R110R148
 STATE OF ILLINOIS - PROFESSIONAL DESIGN FIRM
 5662202
 11/02/2008
 34701/FW
 B:\projects\11-080385 - 155th lapp\cadd\survey\drawings\lapp\lapp\080385-PL-1003.dwg



DESIGNED - CAC	REVISED -
DRAWN - BCD	REVISED -
CHECKED - TMS	REVISED -
DATE - 11-14-08	REVISED -

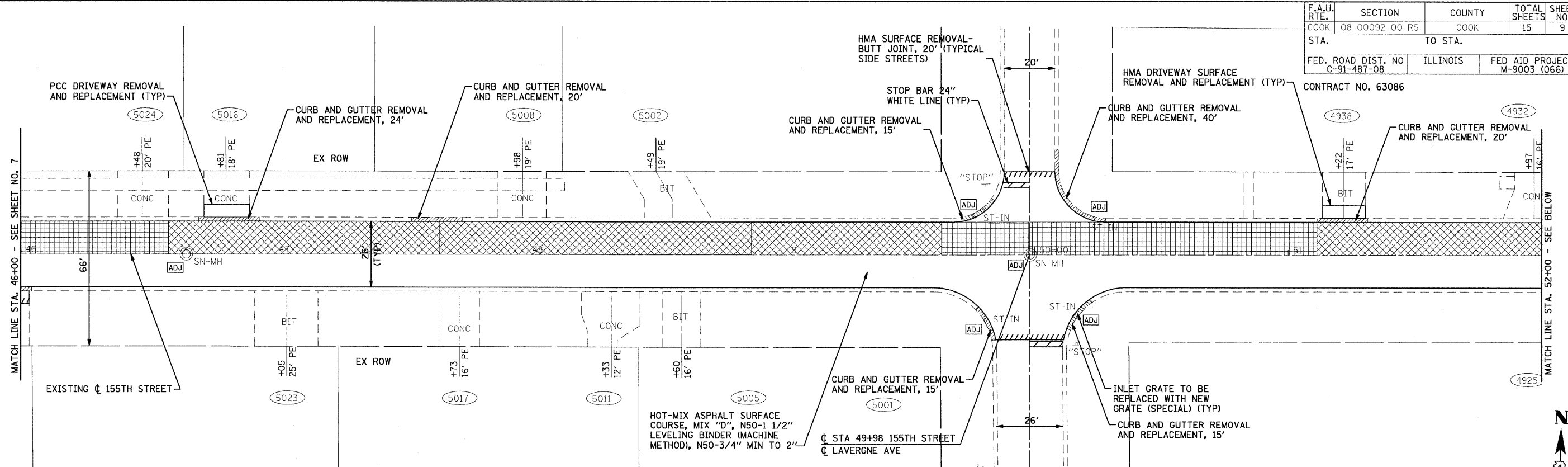
CITY OF OAK FOREST, ILLINOIS
FAU 1021 155TH STREET (LAPP) RESURFACING
SECTION 08-00092-00-RS

155TH STREET PLAN
 SCALE: 1"=20'
 STA. 34+00 TO STA. 46+00

F.A. RTE. 1021	SECTION 08-00092-00-RS	COUNTY COOK	TOTAL SHEETS 15	SHEET NO. 8
FED. ROAD DIST. NO.		ILLINOIS	FED. AID PROJECT	

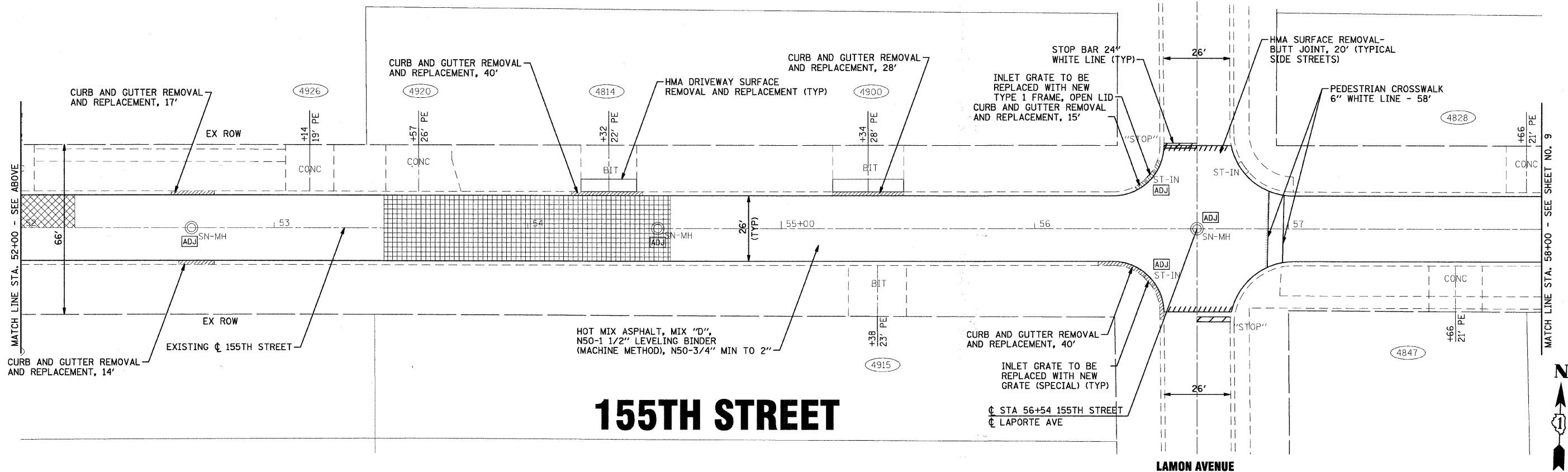
F.A.U. RTE.	SECTION	COUNTY	TOTAL SHEETS	SHEET NO.
COOK	08-00092-00-RS	COOK	15	9
STA.	TO STA.			
FED. ROAD DIST. NO	ILLINOIS	FED AID PROJECT		
C-91-487-08		M-9003 (066)		

CONTRACT NO. 63086



155TH STREET

LEGEND:
SEE SHEET NO. 10 FOR LEGEND



155TH STREET

COPYRIGHT © 2008, BY BAXTER & WOODMAN, INC. #P:TOR14#
 STATE OF ILLINOIS - PROFESSIONAL DESIGN FIRM
 555 E. MONROE ST., SUITE 200, CHICAGO, IL 60601
 TEL: 312.467.1100 FAX: 312.467.1101
 1/18/2008

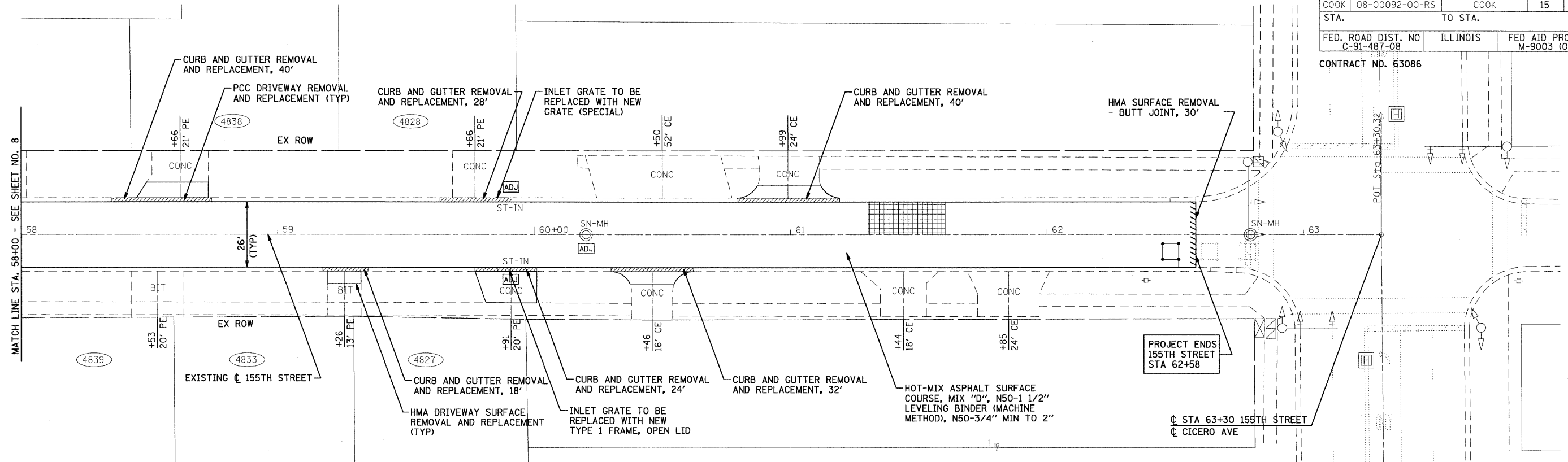


DESIGNED -	CAC	REVISED -	
DRAWN -	BCD	REVISED -	
CHECKED -	TMS	REVISED -	
DATE -	11-14-08	REVISED -	

CITY OF OAK FOREST, ILLINOIS
FAU 1021 155TH STREET (LAPP) RESURFACING
SECTION 08-00092-00-RS

155TH STREET PLAN				
F.A.U. RTE.	SECTION	COUNTY	TOTAL SHEETS	SHEET NO.
1021	08-00092-00-RS	COOK	15	9
SCALE: 1"=20'		STA. 46+00 TO STA. 58+00		
FED. ROAD DIST. NO.		ILLINOIS FED. AID PROJECT		

F.A.U. RTE.	SECTION	COUNTY	TOTAL SHEETS	SHEET NO.
COOK	08-00092-00-RS	COOK	15	10
STA.	TO STA.			
FED. ROAD DIST. NO.	ILLINOIS	FED AID PROJECT		
C-91-487-08		M-9003 (066)		
CONTRACT NO. 63086				



155TH STREET

CICERO AVENUE



LEGEND:

	HMA SURFACE REMOVAL AND REPLACEMENT, 3"
	CLASS D PATCHES, 6"
	STRUCTURE ADJUSTMENT
	STRUCTURE RECONSTRUCTION
	SIDEWALK REMOVAL AND REPLACEMENT
	HMA SURFACE REMOVAL, 2"

COPYRIGHT © 2008 BY BAXTER & WOODMAN, INC. #PLTDIV44
 STATE OF ILLINOIS - PROFESSIONAL DESIGN FIRM
 LICENSE NO. 184-000222-0001 EXP. 12/31/2011
 155th LAPP 080092RS - 155th LAPP 080092RS - 155th LAPP 080092RS - 155th LAPP 080092RS - 155th LAPP 080092RS - 155th LAPP 080092RS - 155th LAPP 080092RS - 155th LAPP 080092RS - 155th LAPP 080092RS - 155th LAPP 080092RS



DESIGNED - CAC	REVISED -
DRAWN - BCD	REVISED -
CHECKED - TMS	REVISED -
DATE - 11-14-08	REVISED -

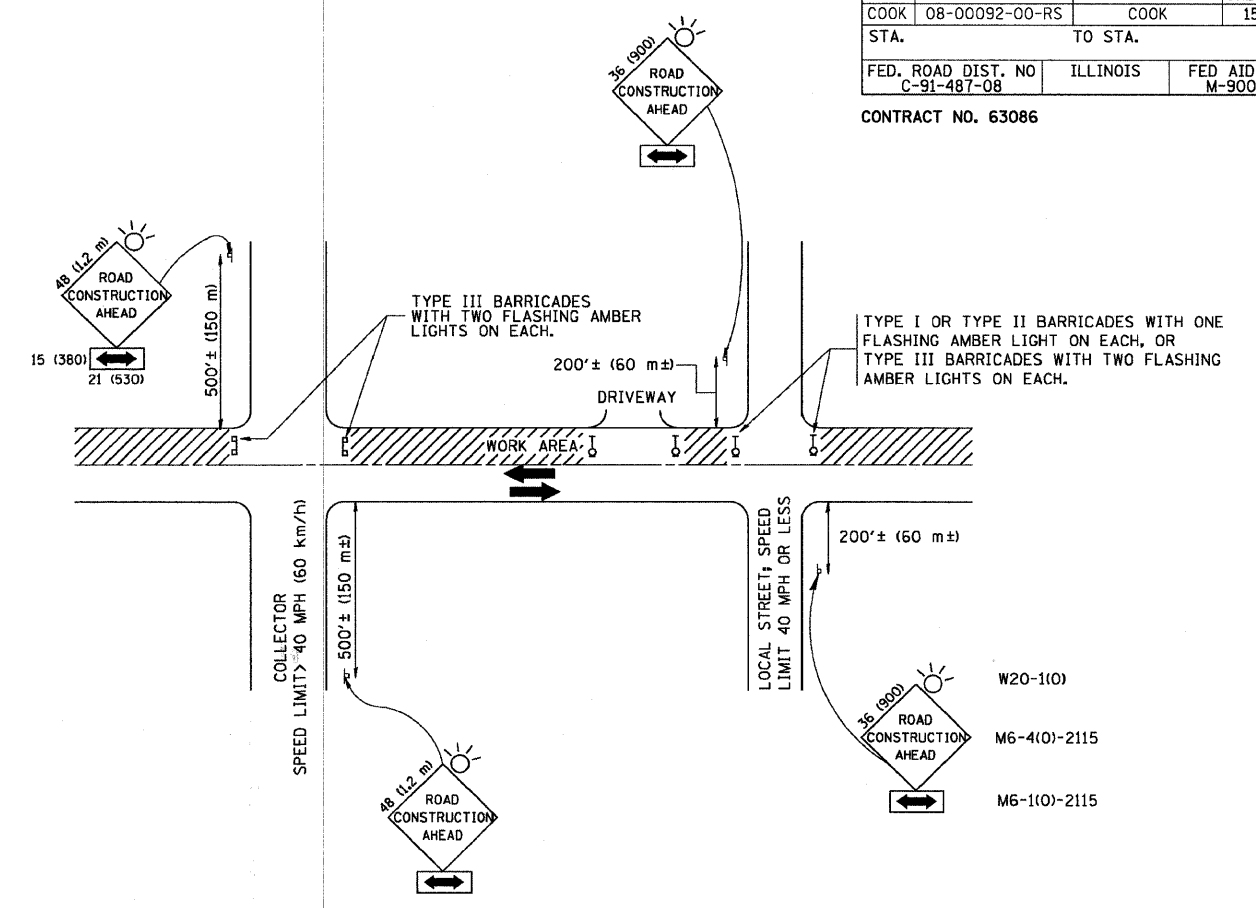
CITY OF OAK FOREST, ILLINOIS
FAU 1021 155TH STREET (LAPP) RESURFACING
SECTION 08-00092-00-RS

155TH STREET PLAN	
SCALE: 1"=20'	STA. 58+00 TO STA. 63+30

F.A.U. RTE.	SECTION	COUNTY	TOTAL SHEETS	SHEET NO.
1021	08-00092-00-RS	COOK	15	10
FED. ROAD DIST. NO.	ILLINOIS	FED. AID PROJECT		

F.A.U. RTE.	SECTION	COUNTY	TOTAL SHEETS	SHEET NO.
COOK	08-00092-00-RS	COOK	15	11
STA.		TO STA.		
FED. ROAD DIST. NO.	ILLINOIS	FED AID PROJECT		
C-91-487-08		M-9003 (066)		

CONTRACT NO. 63086



TRAFFIC CONTROL AND PROTECTION FOR SIDE ROADS, INTERSECTIONS, AND DRIVEWAYS

NOTES:

- A. FOR NO LANE RESTRICTION ON THE SIDE ROAD OR DRIVEWAYS
 1. SIDE ROAD WITH A SPEED LIMIT OF 40 MPH (60 km/h) OR LESS AS SHOWN ON THE DRAWING AND AS DIRECTED BY THE ENGINEER:
 - a) ONE ROAD CONSTRUCTION AHEAD SIGN 36 x 36 (900x900) WITH A FLASHER AND FLAG MOUNTED ON IT APPROXIMATELY 200' (60 m) IN ADVANCE OF THE MAIN ROUTE.
 - b) THE CLOSED PORTION OF THE MAIN ROUTE SHALL BE PROTECTED BY BLOCKING WITH TYPE I, TYPE II OR TYPE III BARRICADES, 1/3 OF THE CROSS SECTION OF THE CLOSED PORTION.
 2. SIDE ROAD WITH A SPEED LIMIT GREATER THAN 40 MPH (60 km/h) AS SHOWN ON THE DRAWING AND AS DIRECTED BY THE ENGINEER:
 - a) ONE ROAD CONSTRUCTION AHEAD SIGN 48 x 48 (1.2 m x 1.2 m) WITH A FLASHER MOUNTED ON IT APPROXIMATELY 500' (150 m) IN ADVANCE OF THE MAIN ROUTE.
 - b) THE CLOSED PORTION OF THE MAIN ROUTE SHALL BE PROTECTED BY BLOCKING WITH TYPE III BARRICADES, 1/2 OF THE CROSS SECTION OF THE CLOSED PORTION.
- 3. WHEN THE SIDE ROAD LIES BETWEEN THE BEGINNING OF THE MAINLINE SIGNING AND THE WORK ZONE, A SINGLE HEADED ARROW (M6-1) SHALL BE USED IN LIEU OF THE DOUBLE HEADED ARROW (M6-4).
- B. FOR A LANE CLOSURE ON A SIDE ROAD OR DRIVEWAY:

USE APPLICABLE PORTIONS OF THE TYPICAL APPLICATION OF TRAFFIC CONTROL DEVICES (STD. 701501, STD. 701606 OR THE APPROPRIATE STANDARD). THE SPACING OF SIGNS AND BARRICADES SHALL BE ADJUSTED FOR FIELD CONDITIONS AS DIRECTED BY THE ENGINEER. THE DIRECTIONAL ARROW SHALL BE COVERED OR REMOVED WHEN NO LONGER CONSISTENT WITH THE SIDE ROAD LANE CLOSURE.
- C. ADVANCE WARNING SIGNS ARE TO BE OMITTED ON DRIVEWAY UNLESS OTHERWISE NOTED.
- D. THE TRAFFIC CONTROL AND PROTECTION FOR SIDE ROADS, INTERSECTIONS, AND DRIVEWAYS SHALL BE INCIDENTAL TO THE COST OF SPECIFIED TRAFFIC CONTROL STANDARDS OR ITEMS.

All dimensions are in millimeters (inches) unless otherwise shown.

FILE NAME =	USER NAME = geglanoht	DESIGNED - LHA	REVISED - J. OBERLE 10-18-95
W:\diststd\22x34\tdl@ldgn		DRAWN -	REVISED - A. HOUSEH 03-06-96
		CHECKED -	REVISED - A. HOUSEH 10-15-96
		DATE - 06-89	REVISED - T. RAMMACHER 01-06-00

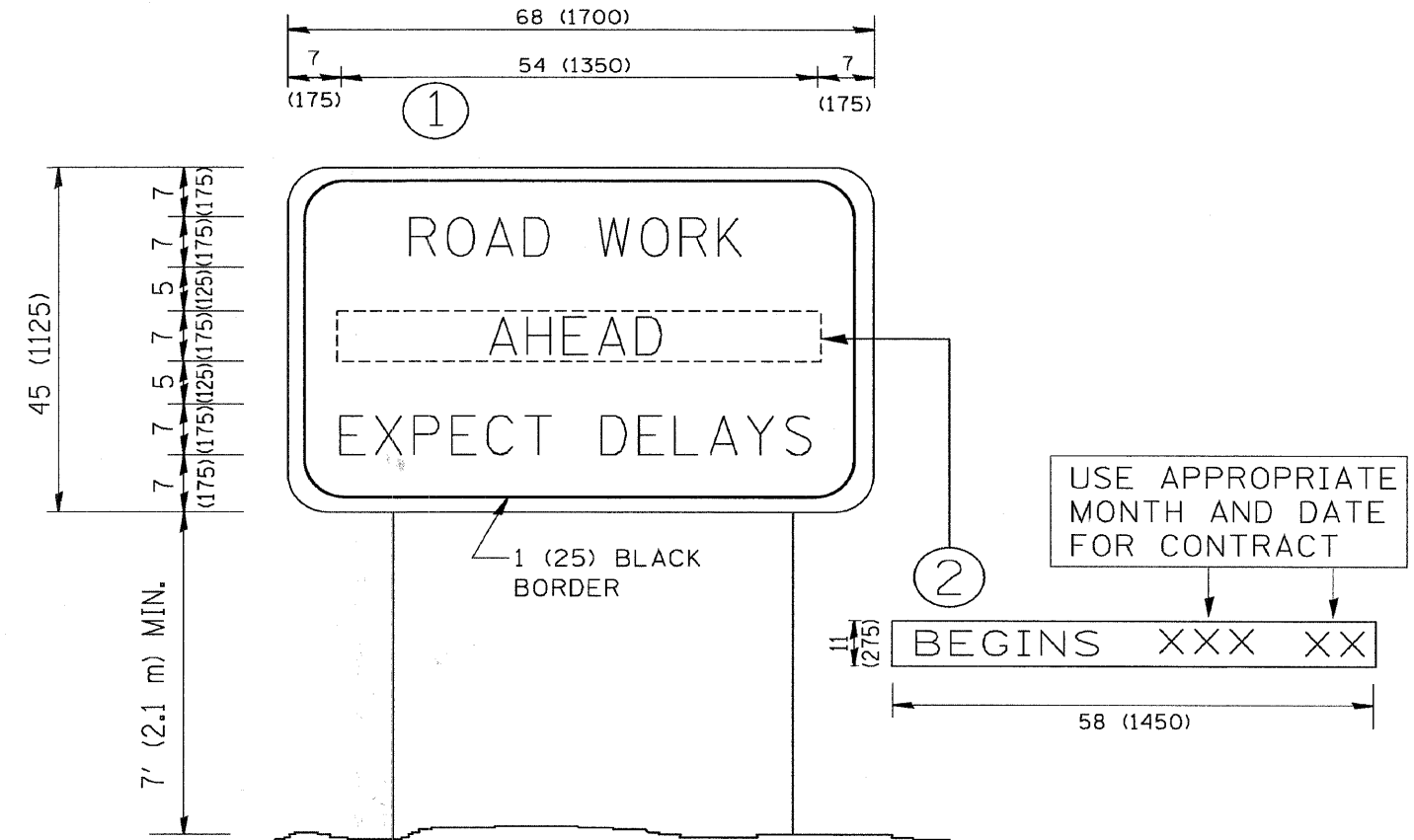
STATE OF ILLINOIS
DEPARTMENT OF TRANSPORTATION

TRAFFIC CONTROL AND PROTECTION FOR SIDE ROADS, INTERSECTIONS, AND DRIVEWAYS			
SCALE: NONE	SHEET NO. 1 OF 1 SHEETS	STA.	TO STA.

F.A. RTE.	SECTION	COUNTY	TOTAL SHEETS	SHEET NO.
COOK	08-00092-00-RS	COOK	15	11
TC-10				
FED. ROAD DIST. NO. 1 ILLINOIS FED. AID PROJECT				

F.A. RTE.	SECTION	COUNTY	TOTAL SHEETS	SHEET NO.
COOK	08-00092-00-RS	COOK	15	12
STA.		TO STA.		
FED. ROAD DIST. NO.	ILLINOIS	FED AID PROJECT		
C-91-487-08		M-9003 (066)		

CONTRACT NO. 63086



NOTES:

1. USE BLACK LETTERING ON ORANGE BACKGROUND.
2. ERECT SIGNS IN ADVANCE OF THE LOCATION FOR THE "ROAD CONSTRUCTION AHEAD" SIGN AT LOCATIONS AS DIRECTED BY THE ENGINEER.
3. ERECT SIGN ① WITH INSTALLED PANEL ② ONE WEEK PRIOR TO THE START OF CONSTRUCTION.
4. REMOVE PANEL ② SOON AFTER THE START OF CONSTRUCTION.
5. SEE SPECIAL PROVISION FOR "TEMPORARY INFORMATION SIGNING" FOR ADDITIONAL INFORMATION.
6. ONE SIGN ASSEMBLY EQUALS 25.70 SQ. FT. (2.3 SQ. M.)
7. SHALL BE PAID FOR AS TEMPORARY INFORMATION SIGNING.

ALL DIMENSIONS ARE IN INCHES (MILLIMETERS) UNLESS OTHERWISE SHOWN.

FILE NAME =	USER NAME = gaglianobt	DESIGNED -	REVISED - R. MIRS 09-15-97
W:\data\22x34\to22.dgn		DRAWN -	REVISED - R. MIRS 12-11-97
	PLOT SCALE = 50.000 ' / IN.	CHECKED -	REVISED - T. RAMMACHER 02-02-99
	PLOT DATE = 1/4/2008	DATE -	REVISED - C. JUCIUS 01-31-07

**STATE OF ILLINOIS
DEPARTMENT OF TRANSPORTATION**

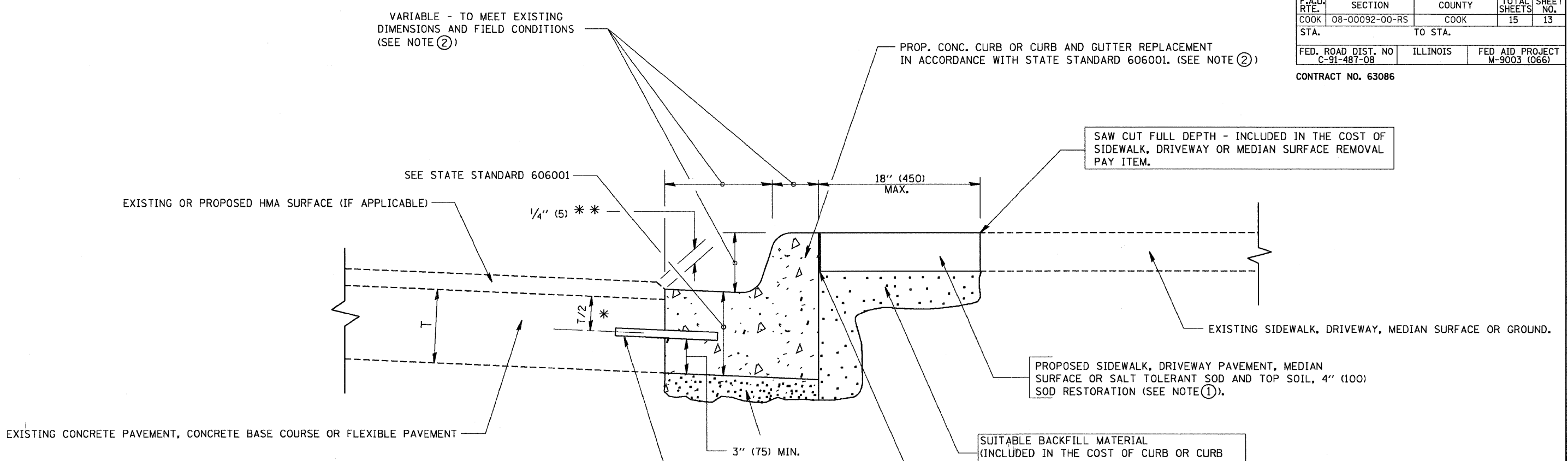
**ARTERIAL ROAD
INFORMATION SIGN**

SCALE: NONE SHEET NO. 1 OF 1 SHEETS STA. TO STA.

F.A. RTE.	SECTION	COUNTY	TOTAL SHEETS	SHEET NO.
1021	08-00092-00-RS	COOK	15	12
TC-22				
FED. ROAD DIST. NO. 1		ILLINOIS	FED. AID PROJECT	

F.A.U. RTE.	SECTION	COUNTY	TOTAL SHEETS	SHEET NO.
COOK	08-00092-00-RS	COOK	15	13
STA.		TO STA.		
FED. ROAD DIST. NO	ILLINOIS	FED AID PROJECT		
C-91-487-08		M-9003 (066)		

CONTRACT NO. 63086



- * 3" (75) MINIMUM FROM TOP AND BOTTOM OF THE CONCRETE PAVEMENT OR BASE COURSE.
- ** IF THE FINAL SURFACE OF THE PAVEMENT IS CONCRETE, THE GUTTER IS TO BE FLUSH WITH THE PAVEMENT.

NOTE: ① SIDEWALK, DRIVEWAY PAVEMENT OR MEDIAN SURFACE SHALL BE SIMILAR TO THE MATERIAL BEING REMOVED AND WILL BE PAID FOR SEPARATELY.

~~SALT TOLERANT SOD AND TOP SOIL, 4" (100) RESTORATION WILL NOT BE PAID FOR SEPARATELY, BUT SHALL BE INCLUDED IN THE COST OF CURB OR CURB AND GUTTER REMOVAL AND REPLACEMENT.~~

- ② CURB OR CURB AND GUTTER REPLACEMENT SHALL MATCH THE SHAPE OF THE EXISTING CURB OR CURB AND GUTTER UNLESS OTHERWISE SPECIFIED.
- ③ FOR CURB OR CURB AND GUTTER REMOVAL AND REPLACEMENT ADJACENT TO FLEXIBLE PAVEMENT DELETE EPOXY COATED TIE BARS.
- ④ LONGITUDINAL BARS, IF ENCOUNTERED IN THE EXISTING CURB OR CURB AND GUTTER, ARE NOT TO BE REPLACED. CUTTING AND REMOVING LONGITUDINAL BARS SHALL BE INCLUDED IN THE COST OF CURB OR CURB AND GUTTER REMOVAL AND REPLACEMENT.
- ⑤ THE COST OF HMA SURFACE REMOVAL IN THE EXISTING GUTTER FLAG SHALL BE INCLUDED IN THE COST OF THE CURB AND GUTTER REMOVAL AND REPLACEMENT.
- ⑥ THE REMOVAL AND REPLACEMENT OF THE EXISTING CURB OR CURB AND GUTTER SHALL BE DONE IN ACCORDANCE WITH THE APPLICABLE PORTIONS OF SECTION 440 AND 606 OF THE STANDARD SPECIFICATIONS.
- ⑦ THE LOCATIONS OF REMOVAL AND REPLACEMENT OF EXISTING CURB OR CURB AND GUTTER SHALL BE DETERMINED BY THE RESIDENT ENGINEER AT THE TIME OF CONSTRUCTION.

BASIS OF PAYMENT:
 THIS WORK WILL BE PAID FOR AT THE CONTRACT UNIT PRICE PER FOOT (METER) FOR "CURB REMOVAL AND REPLACEMENT" OR "COMBINATION CONCRETE CURB AND GUTTER REMOVAL AND REPLACEMENT".

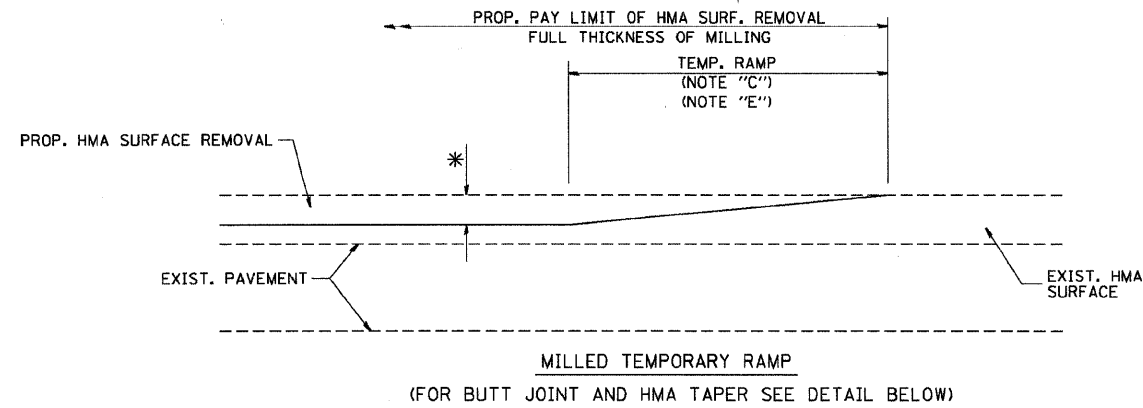
CURB OR CURB AND GUTTER REMOVAL AND REPLACEMENT

ALL DIMENSIONS ARE IN INCHES (MILLIMETERS) UNLESS OTHERWISE SHOWN.

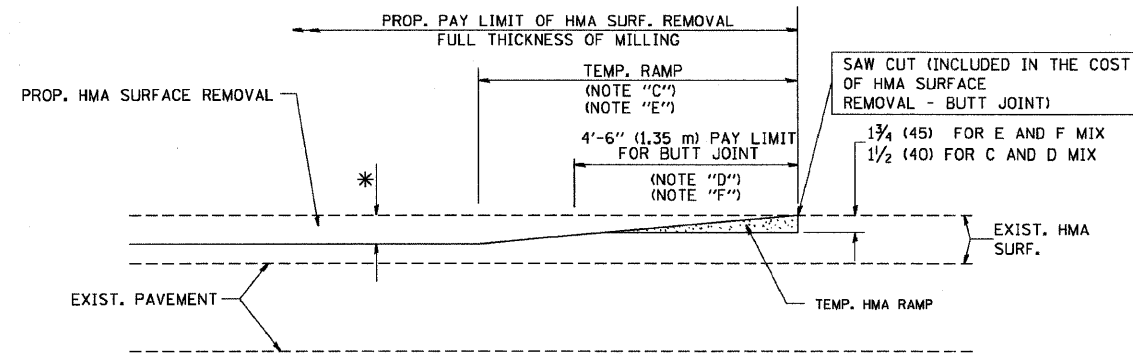
FILE NAME = W:\diststd\22x34\bd24.dgn	USER NAME = geglcnobt	DESIGNED - A. HOUSEH	REVISED - R. SHAH 10-03-96	STATE OF ILLINOIS DEPARTMENT OF TRANSPORTATION	CURB OR CURB AND GUTTER REMOVAL AND REPLACEMENT	F.A.U. RTE. 1021	SECTION 08-00092-00-RS	COUNTY COOK	TOTAL SHEETS 15	SHEET NO. 13
PLOT SCALE = 50.000' / IN. PLOT DATE = 1/4/2008				DRAWN - CHECKED - DATE - 03-11-94		REVISED - A. ABBAS 03-21-97 REVISED - M. GOMEZ 01-22-01 REVISED - R. BORO 01-01-07		SCALE: NONE SHEET NO. 1 OF 1 SHEETS STA. TO STA.		
FED. ROAD DIST. NO. 1 ILLINOIS FED. AID PROJECT										

F.A.U. RTE.	SECTION	COUNTY	TOTAL SHEETS	SHEET NO.
COOK	08-00092-00-RS	COOK	15	14
STA.		TO STA.		
FED. ROAD DIST. NO	ILLINOIS	FED AID PROJECT		
C-91-487-08		M-9003 (066)		

CONTRACT NO. 63086



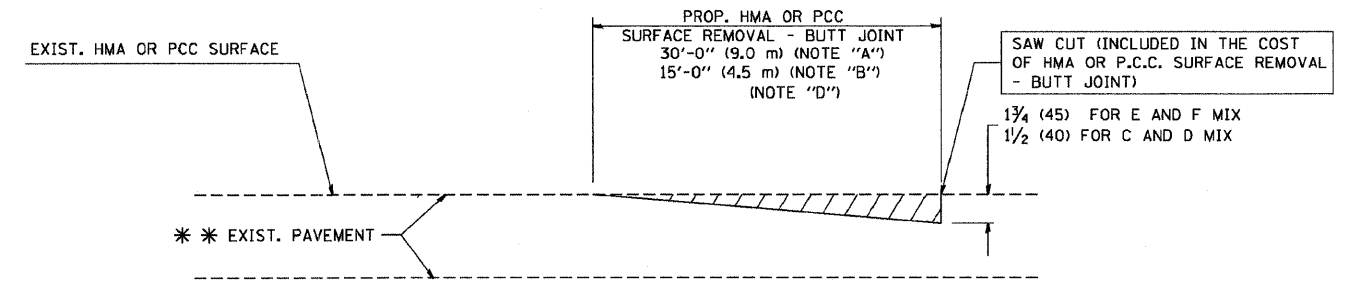
OPTION 1



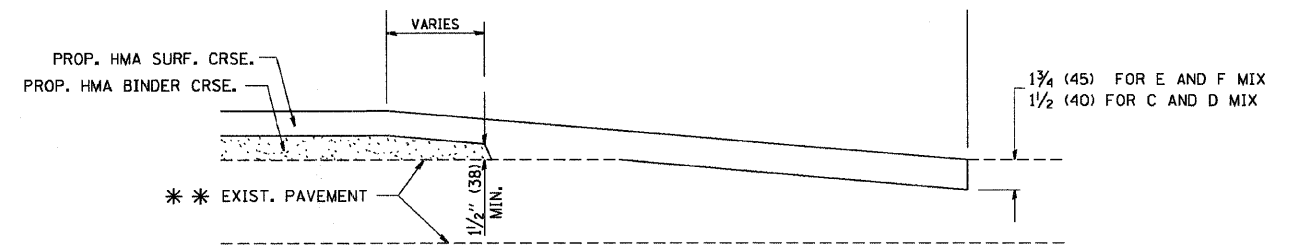
HMA CONSTRUCTED TEMPORARY RAMP
(FOR BUTT JOINT AND HMA TAPER SEE DETAIL BELOW)

OPTION 2

TYPICAL TEMPORARY RAMP



BUTT JOINT DETAIL



HMA TAPER DETAIL

TYPICAL BUTT JOINT AND HMA TAPER
FOR RESURFACING ONLY

** PC CONCRETE, HMA OR HMA RESURFACED PAVEMENT.

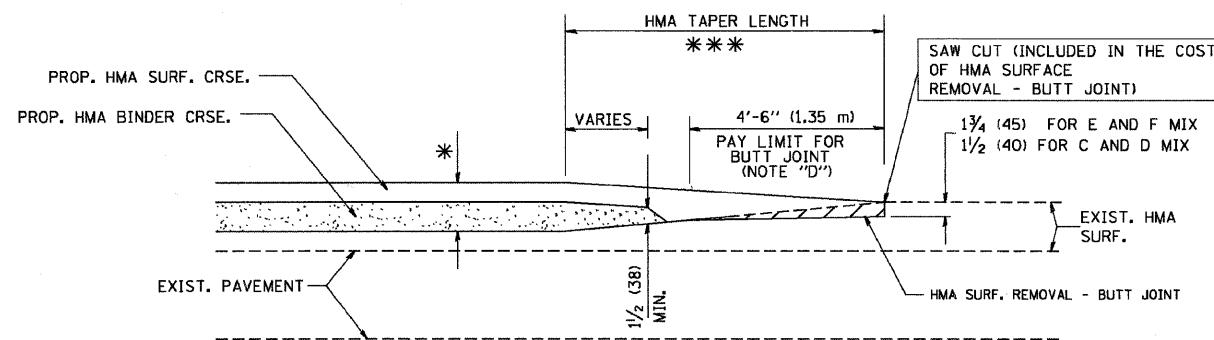
NOTES

- A: MAINLINE ROADWAYS AND MAJOR SIDE ROADS.
- B: MINOR SIDE ROADS.
- C: THE TEMP. RAMP SHALL BE CONSTRUCTED IMMEDIATELY UPON REMOVAL OF THE EXISTING HMA SURFACE.
- D: THE BUTT JOINT SHALL BE CONSTRUCTED IMMEDIATELY PRIOR TO PLACING THE PROPOSED HMA COURSES.
- E: TAPER THE TEMP. RAMP AT A RATE OF 3'-0" (900 mm) PER 1 INCH (25 mm) OF MILLING THICKNESS.
- F: INSTALLATION AND REMOVAL OF THE 4'-6" (1.35 m) TEMP. RAMP IS INCLUDED IN COST OF HMA SURFACE REMOVAL - BUTT JOINT
- G: SEE ARTICLE 406.08 AND 406.14 OF THE STANDARD SPECIFICATIONS FOR "HMA AND/OR PCC SURFACE REMOVAL, BUTT JOINT".
- * SEE TYPICAL SECTIONS FOR MILLING THICKNESS.
- ** 20'-0" (6.1 m) PER 1 (25) RESURFACING (NOTE "A")
10'-0" (3.0 m) PER 1 (25) RESURFACING (NOTE "B")

BASIS OF PAYMENT:

THE BUTT JOINT WILL BE PAID FOR AT THE CONTRACT UNIT PRICE PER SQUARE YARD (SQUARE METER) FOR "HOT-MIX ASPHALT SURFACE REMOVAL - BUTT JOINT" OR FOR "PORTLAND CEMENT CONCRETE SURFACE REMOVAL - BUTT JOINT".

ALL DIMENSIONS ARE IN INCHES (MILLIMETERS) UNLESS OTHERWISE SHOWN.



BUTT JOINT AND
HMA TAPER

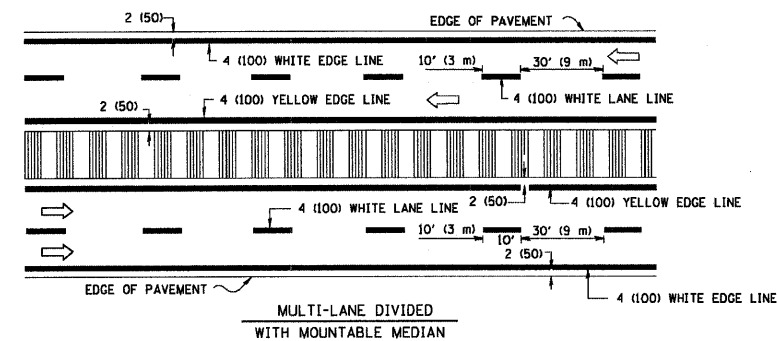
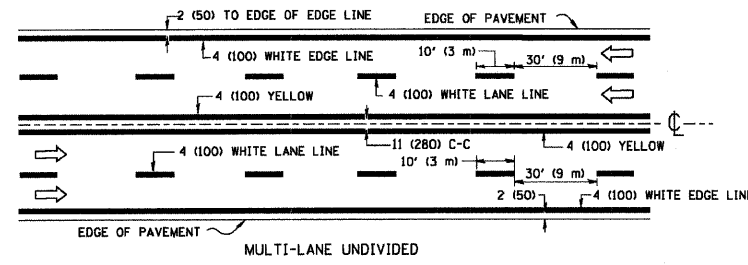
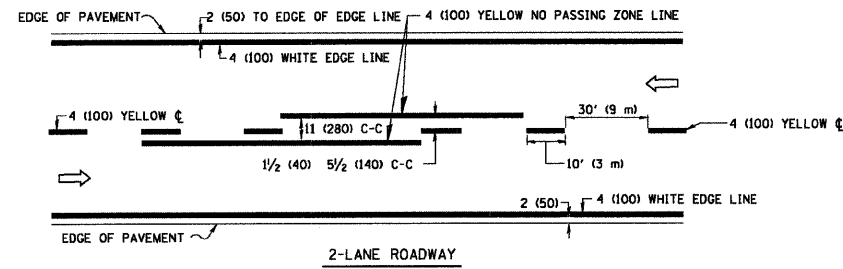
TYPICAL BUTT JOINT AND HMA TAPER
FOR MILLING AND RESURFACING

FILE NAME =	USER NAME = gaglienobt	DESIGNED - M. DE YONG	REVISED - R. SHAH 10-25-94
W:\dista\d\22x34\bd32.dgn		DRAWN -	REVISED - A. ABBAS 03-21-97
	PLOT SCALE = 50.0000' / IN.	CHECKED -	REVISED - M. GOMEZ 04-06-01
	PLOT DATE = 1/4/2008	DATE - 06-13-90	REVISED - R. BORO 01-01-07

STATE OF ILLINOIS
DEPARTMENT OF TRANSPORTATION

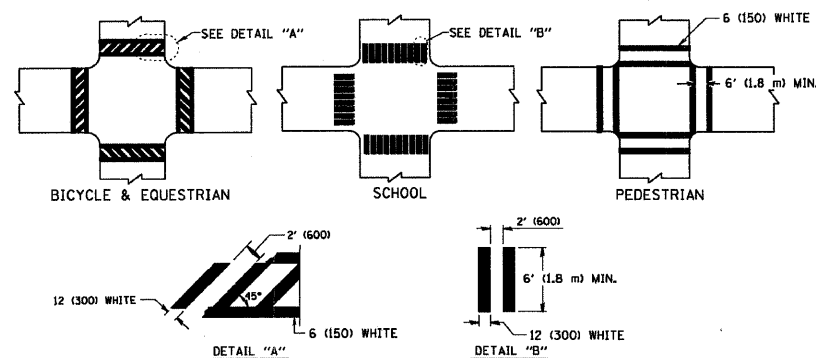
BUTT JOINT AND HMA TAPER DETAILS	
SCALE: NONE	SHEET NO. 1 OF 1 SHEETS STA. TO STA.

F.A. RTE.	SECTION	COUNTY	TOTAL SHEETS	SHEET NO.
1021	08-00092-00-RS	COOK	15	14
BD400-05 BD32				
FED. ROAD DIST. NO. 1 ILLINOIS FED. AID PROJECT				

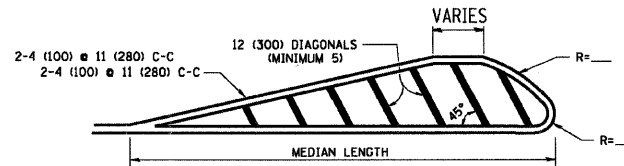
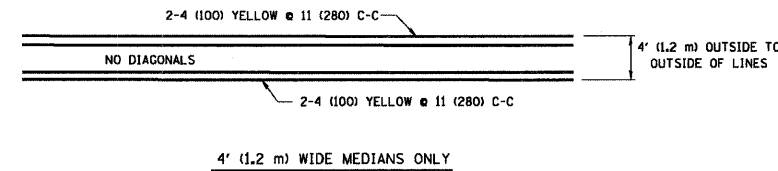


NOTE: MEDIANS WITH BARRIER CURB DO NOT REQUIRE AN EDGE LINE

TYPICAL LANE AND EDGE LINE MARKING

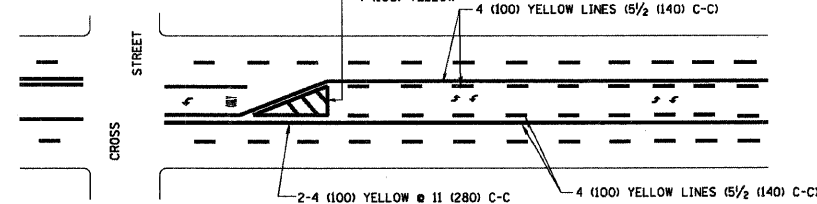


TYPICAL CROSSWALK MARKING

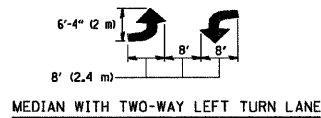


FOR MEDIAN LENGTHS WHERE DIAGONAL SPACING CANNOT BE ATTAINED, USE 5 (FIVE) EQUALLY SPACED DIAGONAL LINES.
 DIAGONAL LINE SPACING: 50' (15 m) C-C (LESS THAN 30MPH (50 km/h))
 75' (25 m) C-C 30MPH (50 km/h) TO 45MPH (70 km/h)
 150' (45 m) C-C (MORE THAN 45MPH (70 km/h))

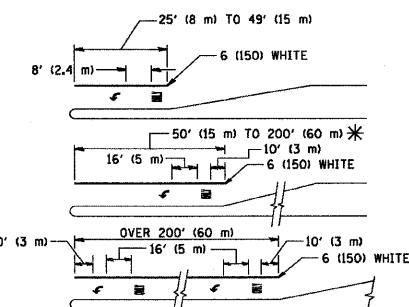
MEDIANS OVER 4' (1.2 m) WIDE



A MINIMUM OF TWO PAIRS OF TURN ARROWS SHALL BE USED, WHITE IN COLOR. ADDITIONAL PAIRS SHALL BE PLACED AT 200' (60 m) TO 300' (90 m) INTERVALS.

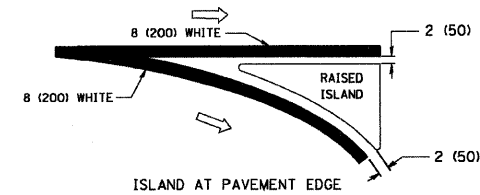
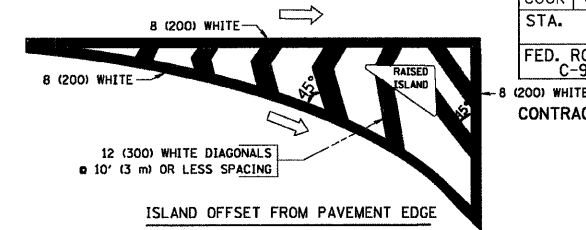


TYPICAL PAINTED MEDIAN MARKING



FULL SIZE LETTERS 8' (2.4 m) AND ARROWS SHALL BE USED.
 AREA = 15.6 SQ. FT. (1.5 m²) AREA = 20.8 SQ. FT. (1.9 m²)
 * TURN LANES IN EXCESS OF 400' (120 m) IN LENGTH MAY HAVE AN ADDITIONAL SET OF ARROW - "ONLY" INSTALLED MIDWAY BETWEEN THE OTHER TWO SETS OF ARROW - "ONLY".

TYPICAL TURN LANE MARKING



TYPICAL ISLAND MARKING

TYPE OF MARKING	WIDTH OF LINE	PATTERN	COLOR	SPACING / REMARKS
CENTERLINE ON 2 LANE PAVEMENT	4 (100)	SKIP-DASH	YELLOW	10' (3 m) LINE WITH 30' (9 m) SPACE
CENTERLINE ON MULTI-LANE UNDIVIDED PAVEMENT	2 @ 4 (100)	SOLID	YELLOW	11 (280) C-C
NO PASSING ZONE LINES: FOR ONE DIRECTION FOR BOTH DIRECTIONS	4 (100) 2 @ 4 (100)	SOLID SOLID	YELLOW YELLOW	5/2 (140) C-C FROM SKIP-DASH CENTERLINE 11 (280) C-C OMIT SKIP-DASH CENTERLINE BETWEEN
LANE LINES	4 (100) 5 (125) ON FREEWAYS	SKIP-DASH SKIP-DASH	WHITE WHITE	10' (3 m) LINE WITH 30' (9 m) SPACE
DOTTED LINES (EXTENSIONS OF CENTER, LANE OR TURN LANE MARKINGS)	SAME AS LINE BEING EXTENDED	SKIP-DASH	SAME AS LINE BEING EXTENDED	2' (600) LINE WITH 6' (1.8 m) SPACE
EDGE LINES	4 (100)	SOLID	YELLOW-LEFT WHITE-RIGHT	OUTLINE MOUNTABLE MEDIANS IN YELLOW; EDGE LINES ARE NOT USED NEXT TO BARRIER CURB
TURN LANE MARKINGS	6 (150) LINE; FULL SIZE LETTERS & SYMBOLS (8' (2.4m))	SOLID	WHITE	SEE TYPICAL TURN LANE MARKING DETAIL
TWO WAY LEFT TURN MARKING	2 @ 4 (100) EACH DIRECTION 8' (2.4m) LEFT ARROW	SKIP-DASH AND SOLID IN PAIRS	YELLOW WHITE	10' (3 m) LINE WITH 30' (9 m) SPACE FOR SKIP-DASH; 5/2 (140) C-C BETWEEN SOLID LINE AND SKIP-DASH LINE SEE TYPICAL TWO-WAY LEFT TURN MARKING DETAIL
CROSSWALK LINES (PEDESTRIAN) A. DIAGONALS (BIKE & EQUESTRIAN) B. LONGITUDINAL BARS (SCHOOL)	2 @ 6 (150) 12 (300) @ 45° 12 (300) @ 90°	SOLID SOLID SOLID	WHITE WHITE WHITE	NOT LESS THAN 6' (1.8 m) APART 2' (600) APART 2' (600) APART SEE TYPICAL CROSSWALK MARKING DETAILS.
STOP LINES	24 (600)	SOLID	WHITE	PLACE 4' (1.2 m) IN ADVANCE OF AND PARALLEL TO CROSSWALK, IF PRESENT. OTHERWISE, PLACE AT DESIRED STOPPING POINT. PARALLEL TO CROSSROAD CENTERLINE, WHERE POSSIBLE
PAINTED MEDIANS	2 @ 4 (100) WITH 12 (300) DIAGONALS @ 45° NO DIAGONALS USED FOR 4' (1.2 m) WIDE MEDIANS	SOLID	YELLOW; TWO WAY TRAFFIC WHITE; ONE WAY TRAFFIC	11 (280) C-C FOR THE DOUBLE LINE SEE TYPICAL PAINTED MEDIAN MARKING.
GORE MARKING AND CHANNELIZING LINES	8 (200) WITH 12 (300) DIAGONALS @ 45°	SOLID	WHITE	DIAGONALS: 15' (4.5 m) C-C (LESS THAN 30MPH (50 km/h)) 20' (6 m) C-C 30MPH (50 km/h) TO 45MPH (70 km/h) 30' (9 m) C-C (OVER 45MPH (70 km/h))
RAILROAD CROSSING	24 (600) TRANSVERSE LINES; "RR" IS 6' (1.8 m) LETTERS; 16 (400) LINE FOR "X"	SOLID	WHITE	SEE STATE STANDARD 780001 AREA OF: "R"=3.6 SQ. FT. (0.33 m ²) EACH "X"=54.0 SQ. FT. (5.0 m ²)
SHOULDER DIAGONALS	12 (300) @ 45°	SOLID	WHITE - RIGHT YELLOW - LEFT	50' (15 m) C-C (LESS THAN 30MPH (50 km/h)) 75' (25 m) C-C (30 MPH (50 km/h) TO 45MPH (70 km/h)) 150' (45 m) C-C (OVER 45MPH (70 km/h))

FOR FURTHER DETAILS ON PAVEMENT MARKING REFER TO STANDARD SPECIFICATIONS FOR ROAD AND BRIDGE CONSTRUCTION AND STATE STANDARD 780001.

All dimensions are in inches (millimeters) unless otherwise shown.

FILE NAME =	USER NAME = gaglione	DESIGNED - EVERS	REVISED - T. RAMMACHER 10-27-94
W:\dst\std\22x34\1\13.dgn		DRAWN -	REVISED - A. HOUSEH 10-09-96
	PLOT SCALE = 50.000' / IN.	CHECKED -	REVISED - A. HOUSEH 10-17-96
	PLOT DATE = 1/4/2008	DATE - 03-19-90	REVISED - T. RAMMACHER 01-06-00

STATE OF ILLINOIS DEPARTMENT OF TRANSPORTATION

DISTRICT ONE TYPICAL PAVEMENT MARKINGS

SCALE: NONE SHEET NO. 1 OF 1 SHEETS STA. TO STA.

F.A.U. RTE.	SECTION	COUNTY	TOTAL SHEETS	SHEET NO.
1021	08-00092-00-RS	COOK	15	15
TC-13				
FED. ROAD DIST. NO. 1 ILLINOIS FED. AID PROJECT				