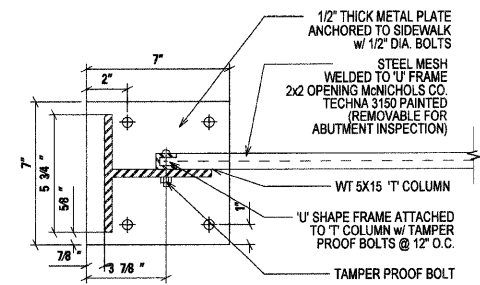
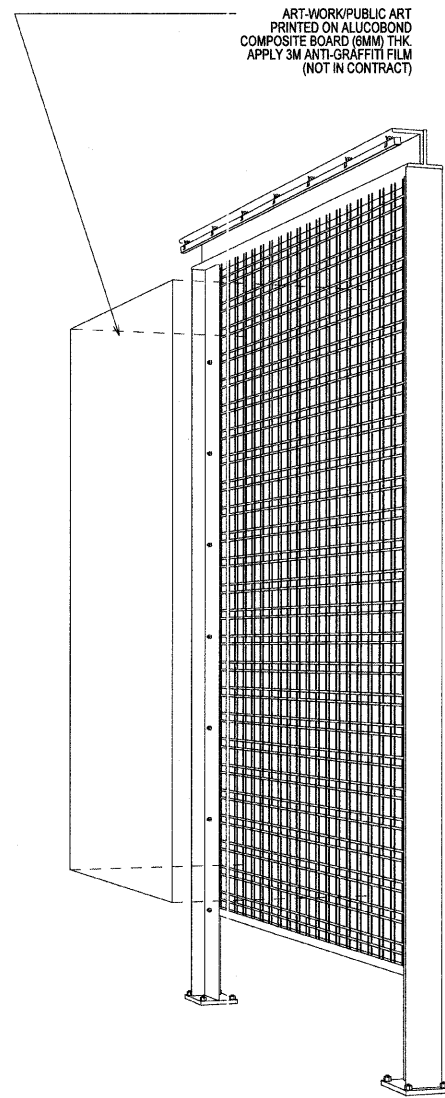


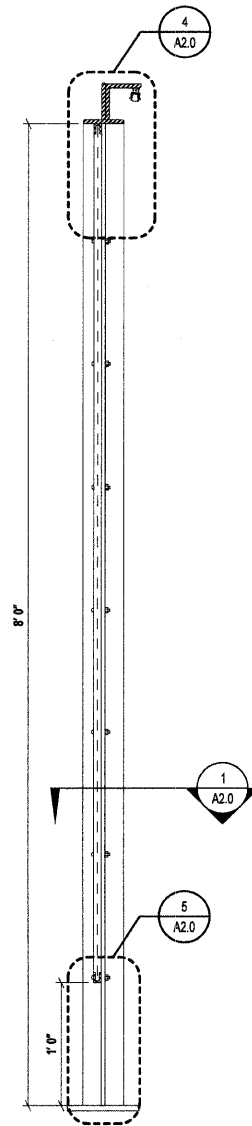
1 ORN.METAL PANEL-PLAN
SCALE: 1-1/2" = 1'-0"



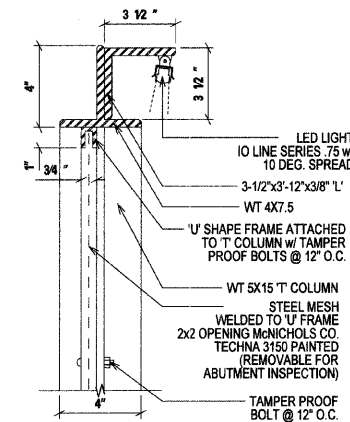
2 PLAN DETAIL @ BASE
SCALE: 3" = 1'-0"



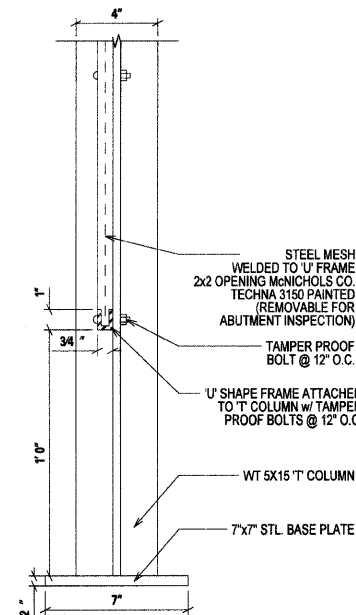
7 PERSPECTIVE (NIC)
SCALE: NTS



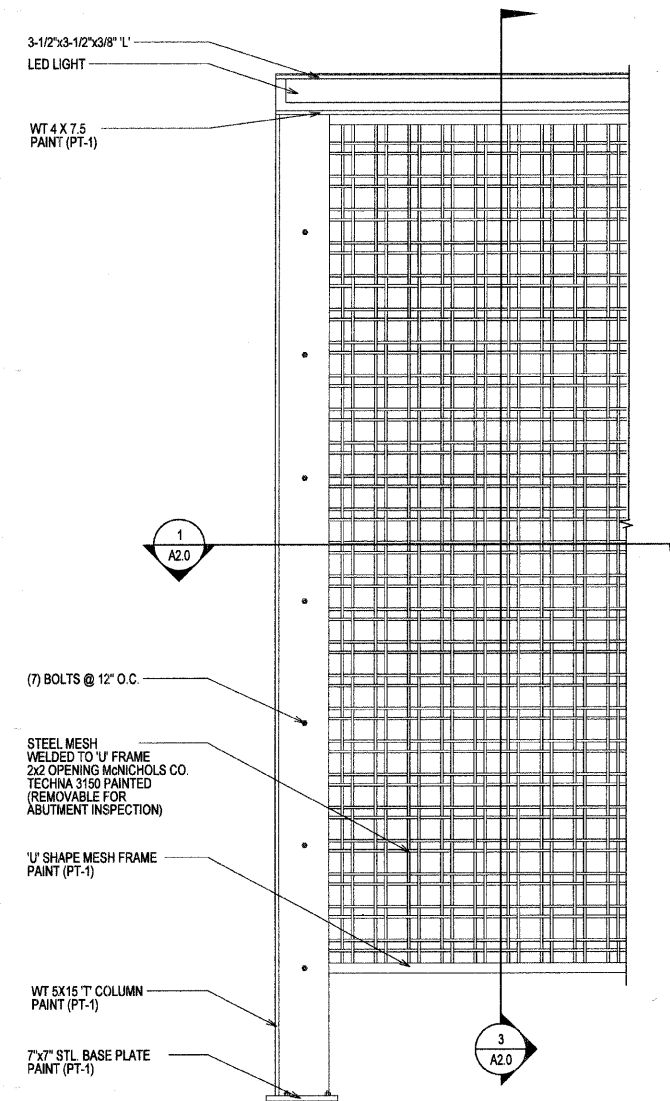
3 ORN.METAL PANEL-SECTIC
SCALE: 1-1/2" = 1'-0"



4 SECTION DETAIL @ TOP
SCALE: 3" = 1'-0"



5 SECTION DETAIL @ BASE
SCALE: 3" = 1'-0"



6 ENLARGED ELEVATION
SCALE: 1-1/2" = 1'-0"

ART-WORK/PUBLIC ART
PRINTED ON ALUCOBOND
COMPOSITE BOARD (6MM) THK
APPLY 3M ANTI-GRAFFITI FILM
(NOT IN CONTRACT)

FILE NAME = #FILE#



| | | |
|----------------------|------------------------|-----------|
| USER NAME = #USER# | DESIGNED <i>AT</i> | REVISED - |
| PLOT SCALE = #SCALE# | DRAWN <i>EB</i> | REVISED - |
| PLOT DATE = #DATE# | CHECKED <i>DK</i> | REVISED - |
| | DATE <i>11-18-2008</i> | REVISED - |

STATE OF ILLINOIS
DEPARTMENT OF TRANSPORTATION

ORNAMENTAL METAL PANEL
ENLARGED PLANS AND DETAILS

SCALE: AS SHOWN SHEET NO. OF SHEETS STA. TO STA.

| | | | | |
|---|----------------|--------|--------------------|-----------|
| F.A. RTE. | SECTION | COUNTY | TOTAL SHEETS | SHEET NO. |
| 2775 | 06-00243-00-BR | COOK | 14 | 9 |
| FED. ROAD DIST. NO. ILLINOIS FED. AID PROJECT | | | CONTRACT NO. 63091 | |

SHEET A2.0