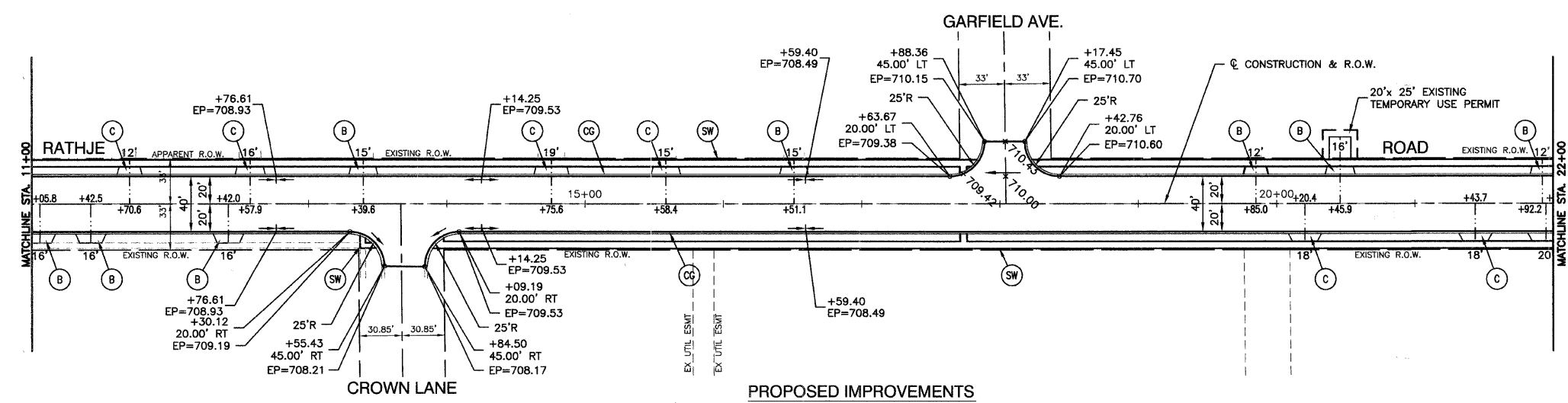
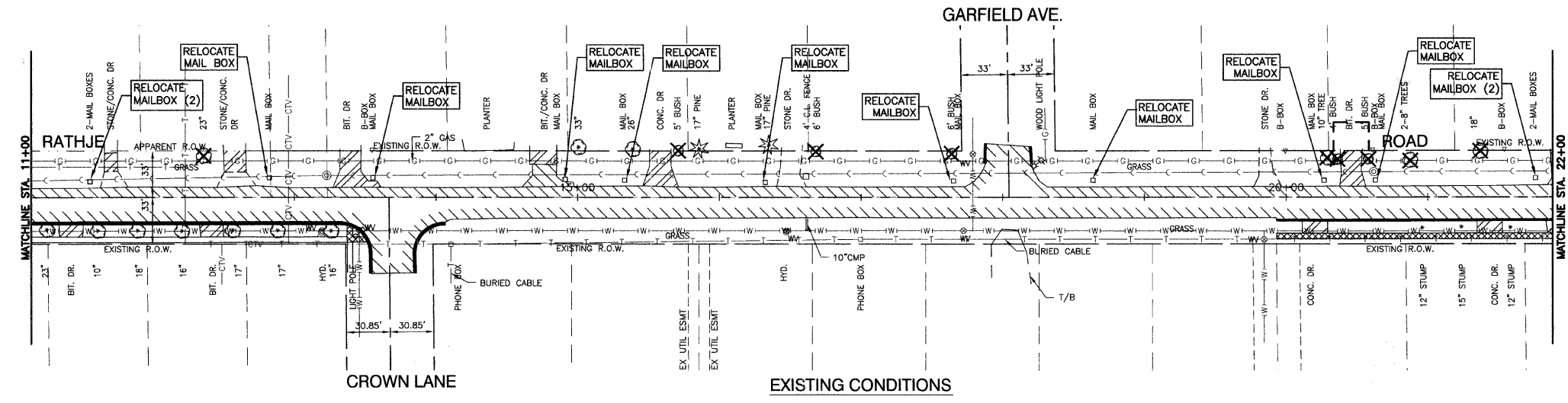
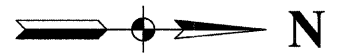


F. A. U. SHEET	SECTION	COUNTY	TOTAL SHEETS	SHEET NO.
4304	04-00045-00-FP	WILL	033	008
STA.		TO STA.		
FED. ROAD DIST. NO.		ILLINOIS	FED. AID PROJECT	

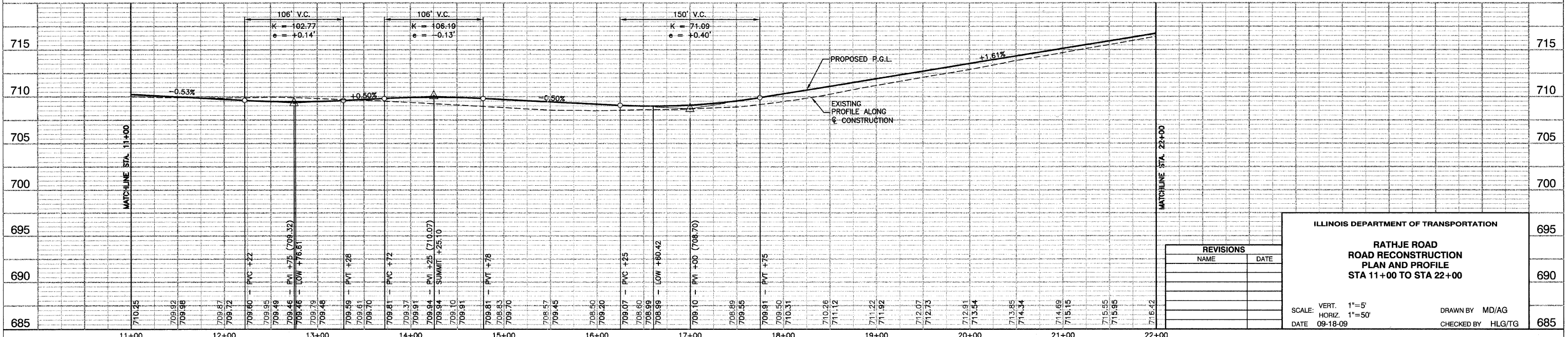
CONTRACT #63108



- LEGEND**
- ⊗ TREE TO BE REMOVED
 - CONC. CURB AND GUTTER REMOVAL
 - ▨ HMA PAVEMENT REMOVAL
 - ▩ SIDEWALK REMOVAL
 - ▧ DRIVEWAY PAVEMENT REMOVAL
 - ⊙(SW) P.C.C. SIDEWALK (5" CONC, 3" AGG BASE - INCIDENTAL TO PCC SIDEWALK)
 - ⊙(C) P.C.C. DRIVEWAY, 6"
 - ⊙(B) HMA DRIVEWAY
 - ⊙(CG) CURB & GUTTER TYPE B-6.12

- NOTE:**
- P.C.C. SIDEWALK SHALL BE 6" THICK THRU ALL DRIVEWAYS.
 - ALL P.C.C. SIDEWALK SHALL BE 5' WIDE EXCEPT WHERE SHOWN ON PLANS.
 - ALL CURB RAMP FOR SIDEWALK SHALL INCLUDE DETECTABLE WARNINGS AND DEPRESSED CURB PER CURRENT HIGHWAY STANDARDS.
 - OFFSETS ARE NOTED FROM CL OF CONSTRUCTION.
 - RESIDENTIAL DRIVEWAYS HAVE 3' FLARE UNLESS OTHERWISE NOTED.

BENCH MARK:
 BENCH MARK #26
 R.R. SPIKE IN SOUTH FACE OF POWER POLE, 1ST PP
 EAST OF RATHJE RD., NORTH SIDE CORNING AVE.
 ELEVATION=711.24



REVISIONS	
NAME	DATE

ILLINOIS DEPARTMENT OF TRANSPORTATION

**RATHJE ROAD
 ROAD RECONSTRUCTION
 PLAN AND PROFILE
 STA 11+00 TO STA 22+00**

SCALE: VERT. 1"=5'
 HORIZ. 1"=50'
 DATE 09-18-09

DRAWN BY MD/AG
 CHECKED BY HLG/TG