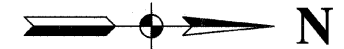


F. A. U. SHEET	SECTION	COUNTY	TOTAL SHEETS	SHEET NO.
4304	04-00045-00-FP	WILL.	033	009
STA.		TO STA.		
FED. ROAD DIST. NO.	LLANGES	FED. AID PROJECT		

CONTRACT #63108



LEGEND

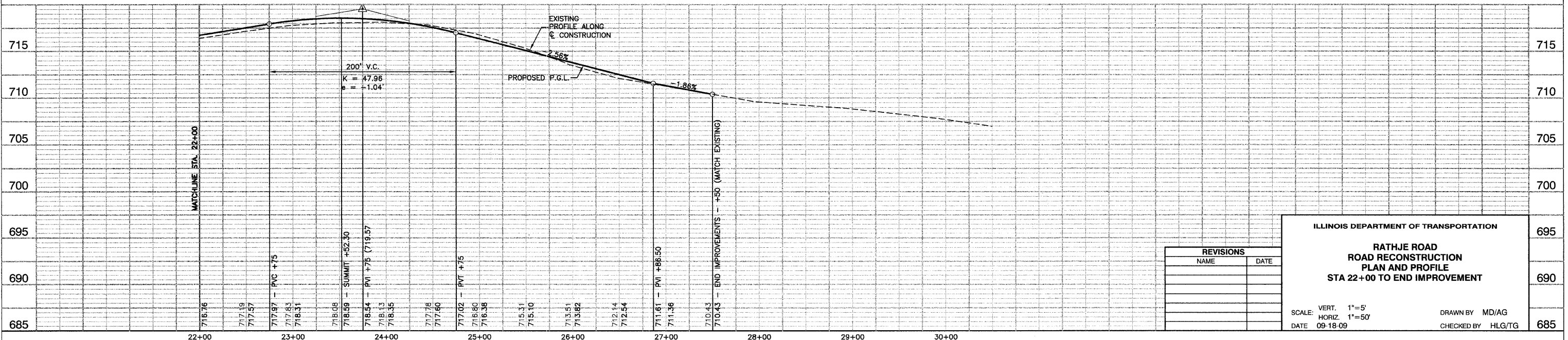
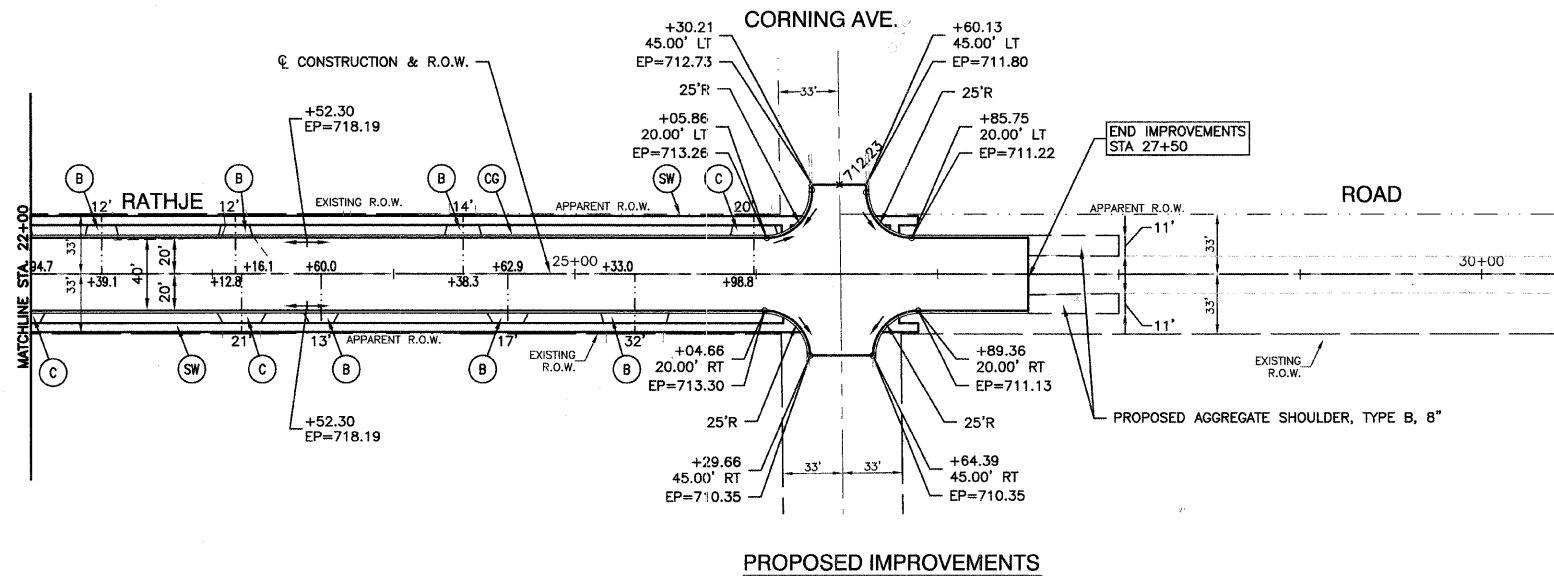
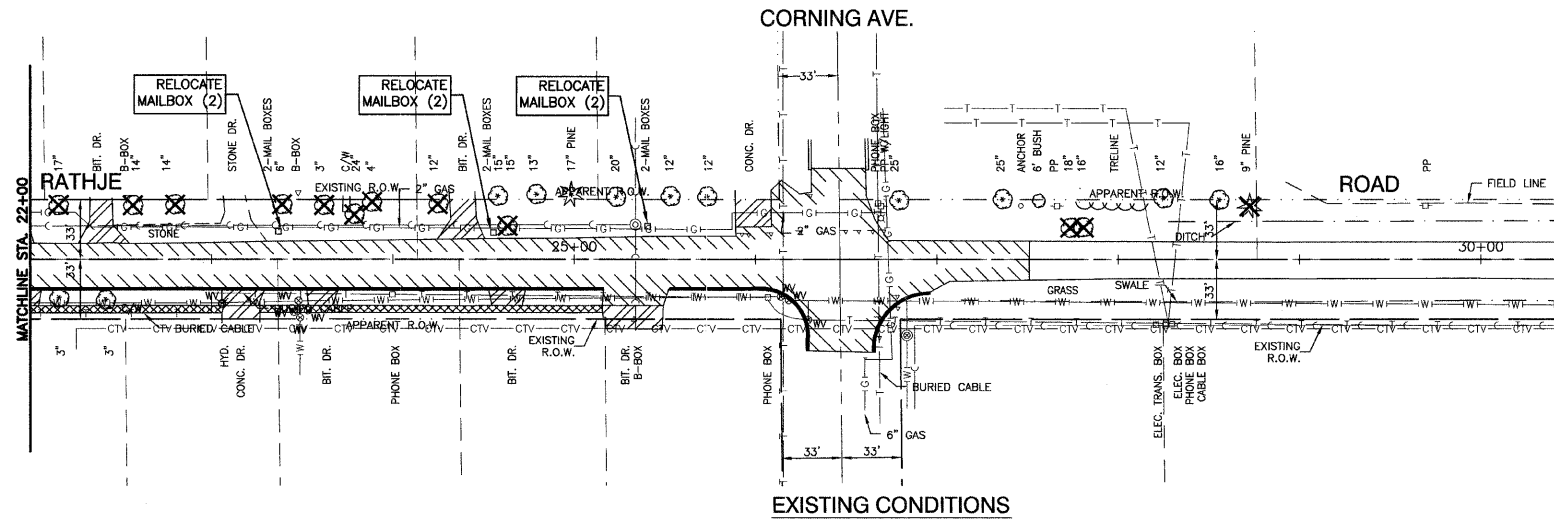
- TREE TO BE REMOVED
- CONC. CURB AND GUTTER REMOVAL
- HMA PAVEMENT REMOVAL
- SIDEWALK REMOVAL
- DRIVEWAY PAVEMENT REMOVAL
- P.C.C. SIDEWALK (5" CONC, 3" AGG BASE - INCIDENTAL TO PCC SIDEWALK)
- P.C.C. DRIVEWAY, 6"
- HMA DRIVEWAY
- CURB & GUTTER TYPE B-6.12

NOTE:

1. P.C.C. SIDEWALK SHALL BE 6" THICK THRU ALL DRIVEWAYS.
2. ALL P.C.C. SIDEWALK SHALL BE 5' WIDE EXCEPT WHERE SHOWN ON PLANS.
3. ALL CURB RAMP FOR SIDEWALK SHALL INCLUDE DETECTABLE WARNINGS AND DEPRESSED CURB PER CURRENT HIGHWAY STANDARDS.
4. OFFSETS ARE NOTED FROM CL OF CONSTRUCTION.
5. RESIDENTIAL DRIVEWAYS HAVE 3' FLARE UNLESS OTHERWISE NOTED.

BENCH MARK:

BENCH MARK #26  
R.R. SPIKE IN SOUTH FACE OF POWER POLE, 1ST PP  
EAST OF RATHJE RD., NORTH SIDE CORNING AVE.  
ELEVATION=711.24



REVISIONS	
NAME	DATE

ILLINOIS DEPARTMENT OF TRANSPORTATION		695
RATHJE ROAD ROAD RECONSTRUCTION PLAN AND PROFILE STA 22+00 TO END IMPROVEMENT		690
SCALE: VERT. 1"=5' HORIZ. 1"=50'	DRAWN BY MD/AG	685
DATE 09-18-09	CHECKED BY HLG/TG	