

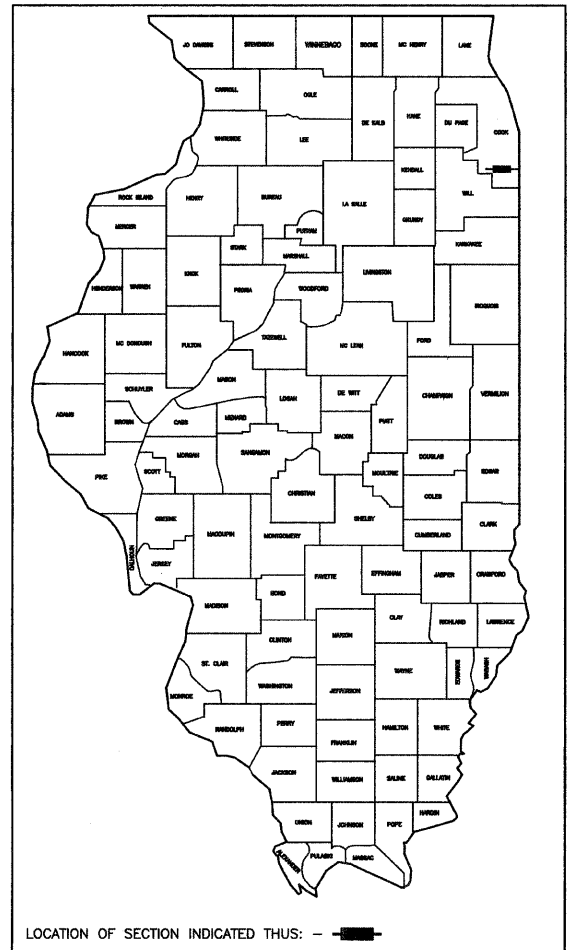
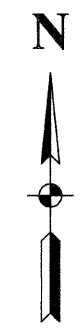
F. A. U. RTE.	SECTION	COUNTY	TOTAL SHEETS	SHEET NO.
1585	08-00085-00-SW	COOK	11	1
STA.	TO STA.			
FED. ROAD DIST. NO.	ILLINOIS	FED. AID PROJECT		

CONTRACT #63109

STATE OF ILLINOIS
DEPARTMENT OF TRANSPORTATION
DIVISION OF HIGHWAYS

**PLANS FOR PROPOSED
FEDERAL AID HIGHWAY**

FAU 1585 119TH STREET
KOSTNER AVENUE (FAU 2403) TO PULASKI ROAD (FAU 2812)
SIDEWALK CONSTRUCTION
PROJECT: M-9003 (085)
SECTION NO.: 08-00085-00-SW
JOB NO.: C-91-014-09
VILLAGE OF ALSIP
COOK COUNTY



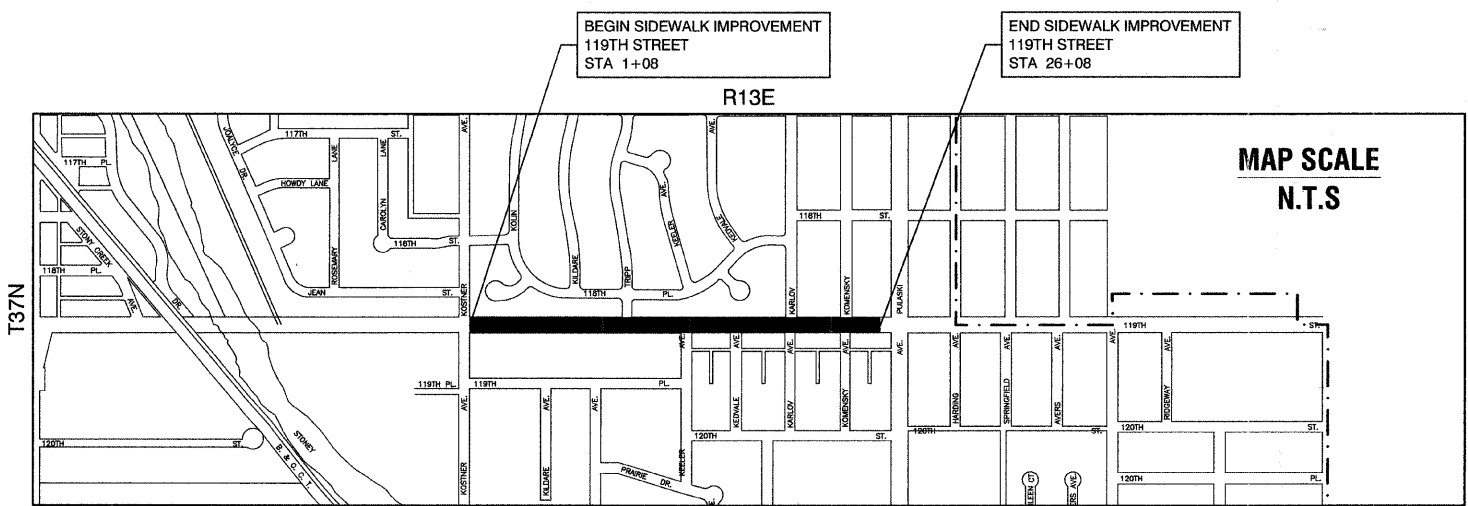
LOCATION OF SECTION INDICATED THIS: - -

INDEX OF SHEETS

- 1 COVER SHEET, INDEX OF SHEETS, LOCATION MAP
INDEX OF STATE STANDARDS
- 2 SUMMARY OF QUANTITIES
- 3 TYPICAL CROSS SECTIONS & GENERAL NOTES
- 4 SIDEWALK PLAN
- 5-8 CROSS SECTIONS
- 9-11 IDOT DISTRICT 1 DETAILS

STATE STANDARDS

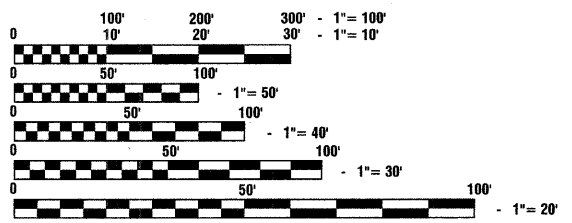
- 000001-05 STANDARD SYMBOLS, ABBREVIATIONS AND PATTERNS
- 424001-05 CURB RAMPS FOR SIDEWALKS
- 442201-03 CLASS C AND D PATCHES
- 606001-04 CONCRETE CURB AND COMBINATION CONCRETE CURB & GUTTER
- 701501-05 URBAN LANE CLOSURE, 2L, 2W UNDIVIDED
- 701701-06 URBAN LANE CLOSURE, MULTILANE INTERSECTION
- 701801-04 LANE CLOSURE, MULTILANE, 1W OR 2W, CROSSWALK OR SIDEWALK CLOSURE
- 701901-01 TRAFFIC CONTROL DEVICES



BEGIN SIDEWALK IMPROVEMENT
119TH STREET
STA 1+08

END SIDEWALK IMPROVEMENT
119TH STREET
STA 26+08

MAP SCALE
N.T.S



FULL SIZE PLANS HAVE BEEN PREPARED USING STANDARD ENGINEERING SCALES, REDUCED SIZED PLANS WILL NOT CONFORM TO STANDARD SCALES, IN MAKING MEASUREMENTS ON REDUCED PLANS, THE ABOVE SCALES MAY BE USED.

J. U. L. I. E.
JOINT UTILITY LOCATION INFORMATION FOR EXCAVATION
1 - 800 - 892 - 0123

LOCATION MAP

- INDICATES PROPOSED IMPROVEMENT
GROSS LENGTH= 2,500 FEET = 0.48 MILES
NET LENGTH= 2,500 FEET = 0.48 MILES

119TH STREET
ADT=3,000 (2007)
=3,250 (2030)
DESIGN SPEED=30 MPH
SPEED LIMIT=25 MPH

CONTRACT NO. 63109

STATE OF ILLINOIS
DEPARTMENT OF TRANSPORTATION
DIVISION OF HIGHWAYS

APPROVED 12/18 2008 *Thomas E. Hitchcock*
PRESIDENT, VILLAGE OF ALSIP

PASSED DECEMBER 29 2008 *Thomas E. Hitchcock*
REGION ONE ENGINEER OF LOCAL ROADS & STREETS

RELEASED FOR
LIMITED REVIEW 12/29 2008 *Diana M. O'Keefe*
DEPUTY DIRECTOR OF HIGHWAYS, REGION ONE ENGINEER

PRINTED BY THE AUTHORITY OF
THE STATE OF ILLINOIS

PREPARED BY OR UNDER THE
DIRECT SUPERVISION OF:
Thomas E. Hitchcock
12/18/08



I.D.O.T. FIELD ENGINEER: MEL MANGOBA 847-705-4408
CONSULTANTS: ROBINSON ENGINEERING, LTD. 708-331-6700
CONTACT ENGINEER: THOMAS R. LANG