

FAU RITE.	SECTION	COUNTY	TOTAL SHEETS	SHEET NO.
1703	08-00025-00-RS	Cook	010	001
STA.		TO STA.		
FED. ROAD DIST. NO. 1		ILLINOIS	FED. AID PROJECT M-9003 (132)	

CONTRACT NO. 63110

STATE OF ILLINOIS
DEPARTMENT OF TRANSPORTATION
DIVISION OF HIGHWAYS

PLANS FOR PROPOSED FEDERAL AID HIGHWAY

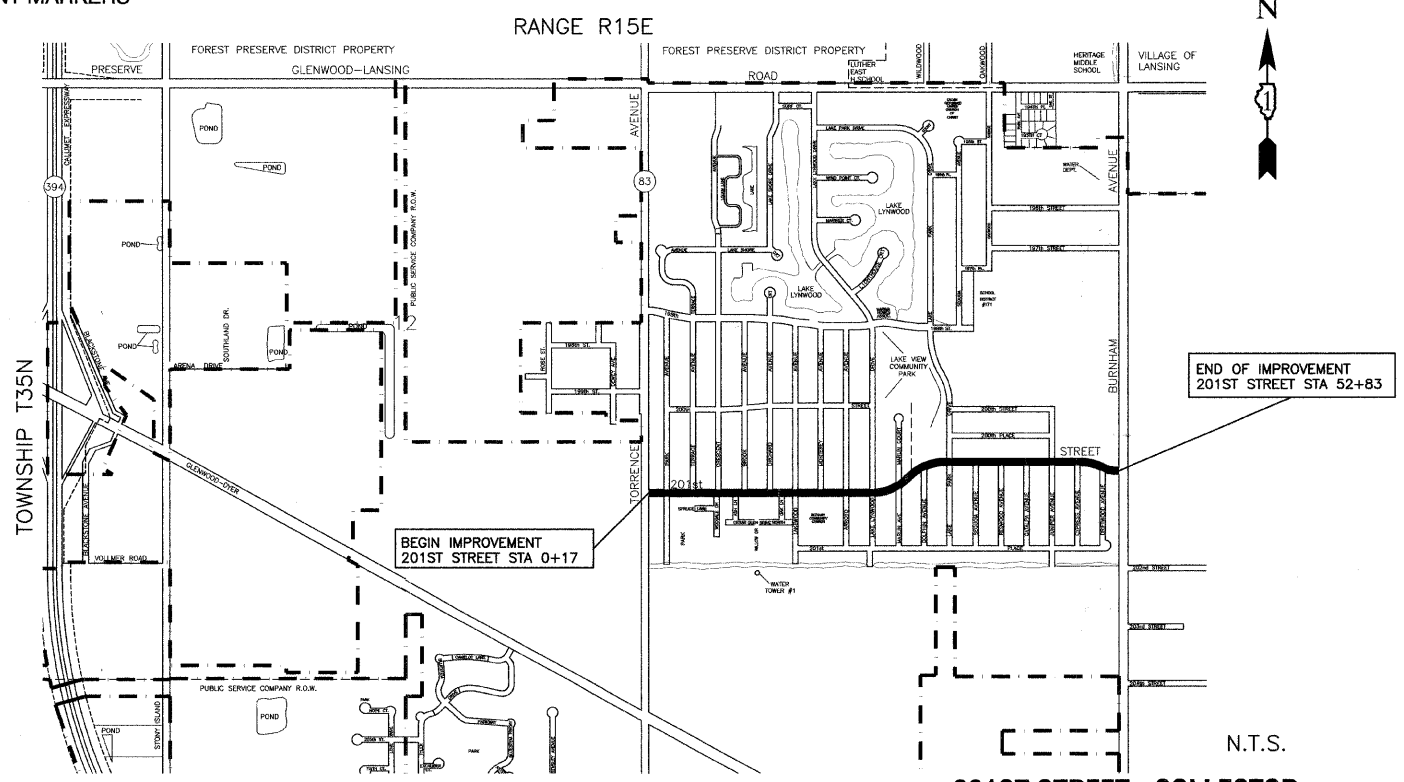
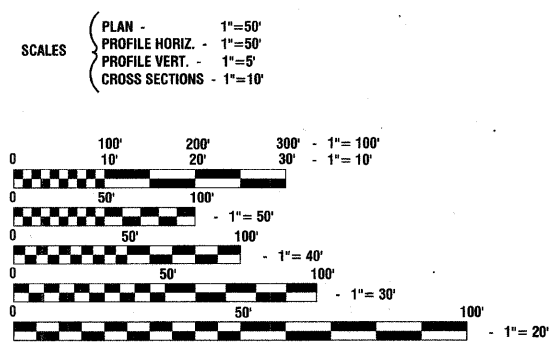
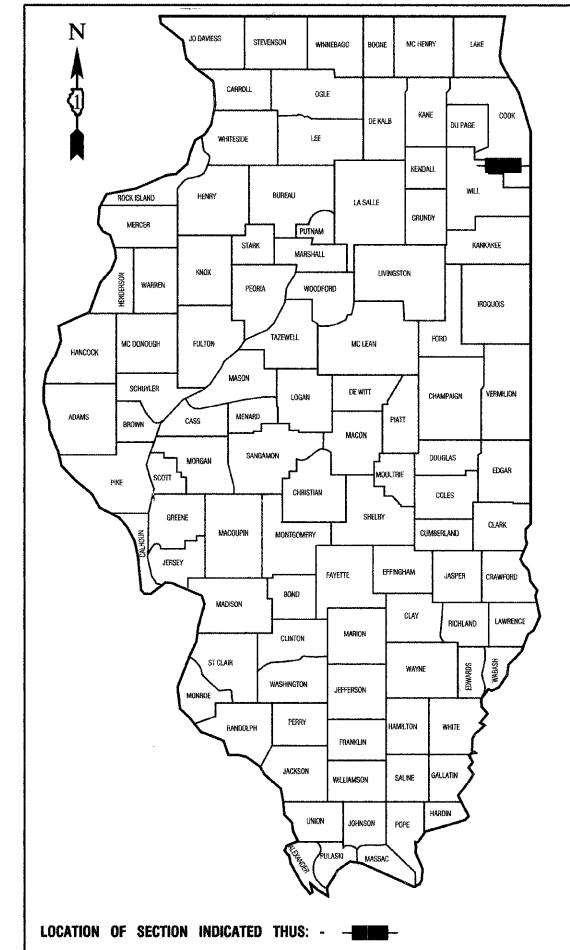
FAU 1703 / 201ST STREET
TORRENCE AVENUE TO BURNHAM AVENUE
LOCAL AGENCY PAVEMENT PRESERVATION
STREET RESURFACING
PROJECT: M-9003 (132)
SECTION NO.: 08-00025-00-RS
JOB NO.: C-91-159-09
VILLAGE OF LYNWOOD
COOK COUNTY

INDEX OF SHEETS

- 1 COVER SHEET, INDEX OF SHEETS, LOCATION MAP
INDEX OF STATE STANDARDS
- 2 SUMMARY OF QUANTITIES & GENERAL NOTES
- 3 TYPICAL CROSS SECTION
- 4-5 PAVEMENT PLAN
- 6-7 STRIPING PLAN
- 8-10 DISTRICT 1 STANDARD DETAILS

HIGHWAY STANDARDS

- 000001-05 STANDARD STANDARDS, ABBREVIATIONS AND PATTERNS
- 280001-04 TEMPORARY EROSION CONTROL SYSTEMS
- 424001-05 CURB RAMPS FOR SIDEWALK
- 442201-03 CLASS C AND D PATCHES
- 606001-04 CONCRETE CURB AND COMBINATION CONCRETE CURB & GUTTER
- 701501-05 URBAN LANE CLOSURE 2-L, 2-W, UNDIVIDED
- 701601-06 URBAN LANE CLOSURE, MULTILANE INTERSECTION
- 701701-06 URBAN LANE CLOSURE, MULTILANE INTERSECTION
- 701801-04 LANE CLOSURE, MULTILANE, 1W OR 2W, CROSSWALK OR SIDEWALK CLOSURE,
- 701901-01 TRAFFIC CONTROL DEVICES
- 780001-02 TYPICAL PAVEMENT MARKINGS
- 781001-03 TYPICAL APPLICATIONS RAISED REFLECTIVE PAVEMENT MARKERS
- 886001-01 DETECTOR LOOP INSTALLATIONS
- 886006-01 TYPICAL LAYOUT FOR DETECTION LOOPS



LOCATION MAP

GROSS LENGTH=5,266 FEET=1.00 MILES
NET LENGTH=5,266 FEET=1.00 MILES

201ST STREET - COLLECTOR

2008 ADT - 9,000
2030 ADT - 9,000
POSTED SPEED LIMIT - 35 mph
DESIGN SPEED LIMIT - 35 mph

N.T.S.

STATE OF ILLINOIS DEPARTMENT OF TRANSPORTATION
DIVISION OF HIGHWAYS

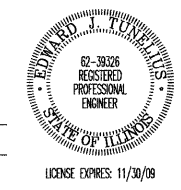
Approved: 12/18/2008
Engel Addline
President, Village of Lynwood

Passed: DECEMBER 29, 2008
Christina Hoer
District 1 Engineer of Local Roads & Streets

Released for Bid Based on Limited Review: DECEMBER 29, 2008
Diana M. O'Keefe
Deputy Director of Highways, Region 1 Engineer

PRINTED BY THE AUTHORITY OF
THE STATE OF ILLINOIS

PREPARED BY OR UNDER THE
DIRECT SUPERVISION OF:
Edward J. Tundak
12-18-2008



FIELD ENGINEER: --- MELCHOR MANGOBA --- 847-705-4408
CONSULTANTS: ROBINSON ENGINEERING, LTD. 708-331-6700
CONTACT ENGINEER: --- RON SMITH

FULL SIZE PLANS HAVE BEEN PREPARED USING STANDARD ENGINEERING SCALES, REDUCED SIZED PLANS WILL NOT CONFORM TO STANDARD SCALES, IN MAKING MEASUREMENTS ON REDUCED PLANS, THE ABOVE SCALES MAY BE USED.

J. U. L. I. E.
JOINT UTILITY LOCATION INFORMATION FOR EXCAVATION
1 - 800 - 892 - 0123 or 811

CONTRACT NO. 63110